

EXHIBIT A
FUTURE LAND USE MAP AMENDMENT

Two (2) Future Land Use Map Amendments to extend the Transit-Oriented Development boundaries as follows:

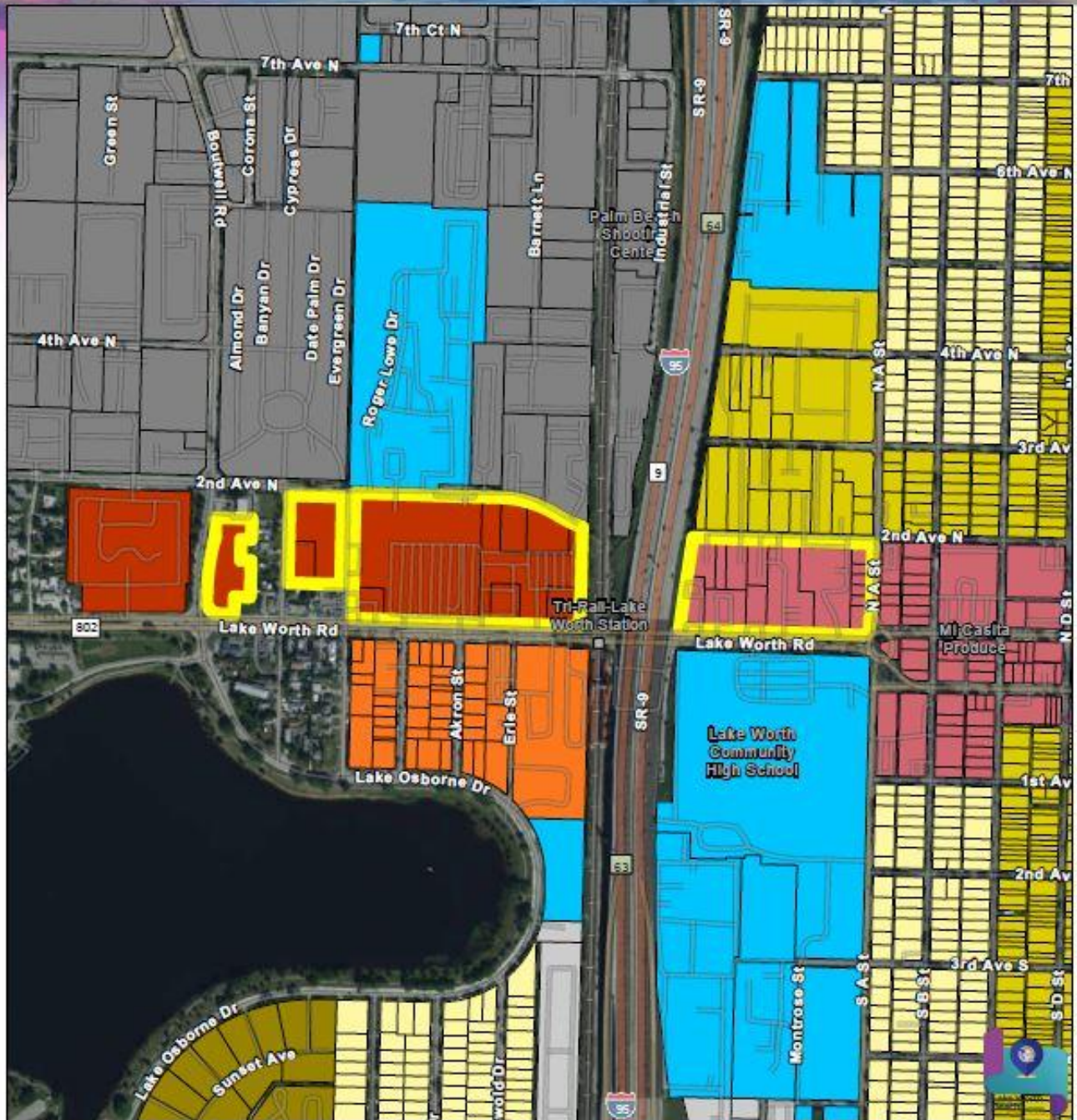
- a) Future Land Use Map amendment for approximately 7.11 acres from Mixed Use–East (MU-E) to TOD from Lake Worth Road north to 2nd Avenue, North A Street west to I-95 and the CSX Railroad Tracks; and

- b) Future Land Use Map amendment for approximately 19.56 acres from Mixed Use–West (MU-W) to TOD from Lake Worth Road north to 2nd Avenue, Boutwell Road east to I-95 and the CSX Railroad Tracks.



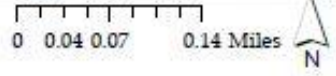
Current Future Land Use

City of Lake Worth Beach, FL



Map Legend

Single Family Residential (SFR)	Mixed Use - West (MU-W)	Public (P)
Medium Density Residential (MDR)	Transit Oriented Development (TOD)	Project Area
High Density Residential (HDR)	Artisanal Mixed Use (AMU)	
Mixed Use - East (MU-E)	Industrial (I)	

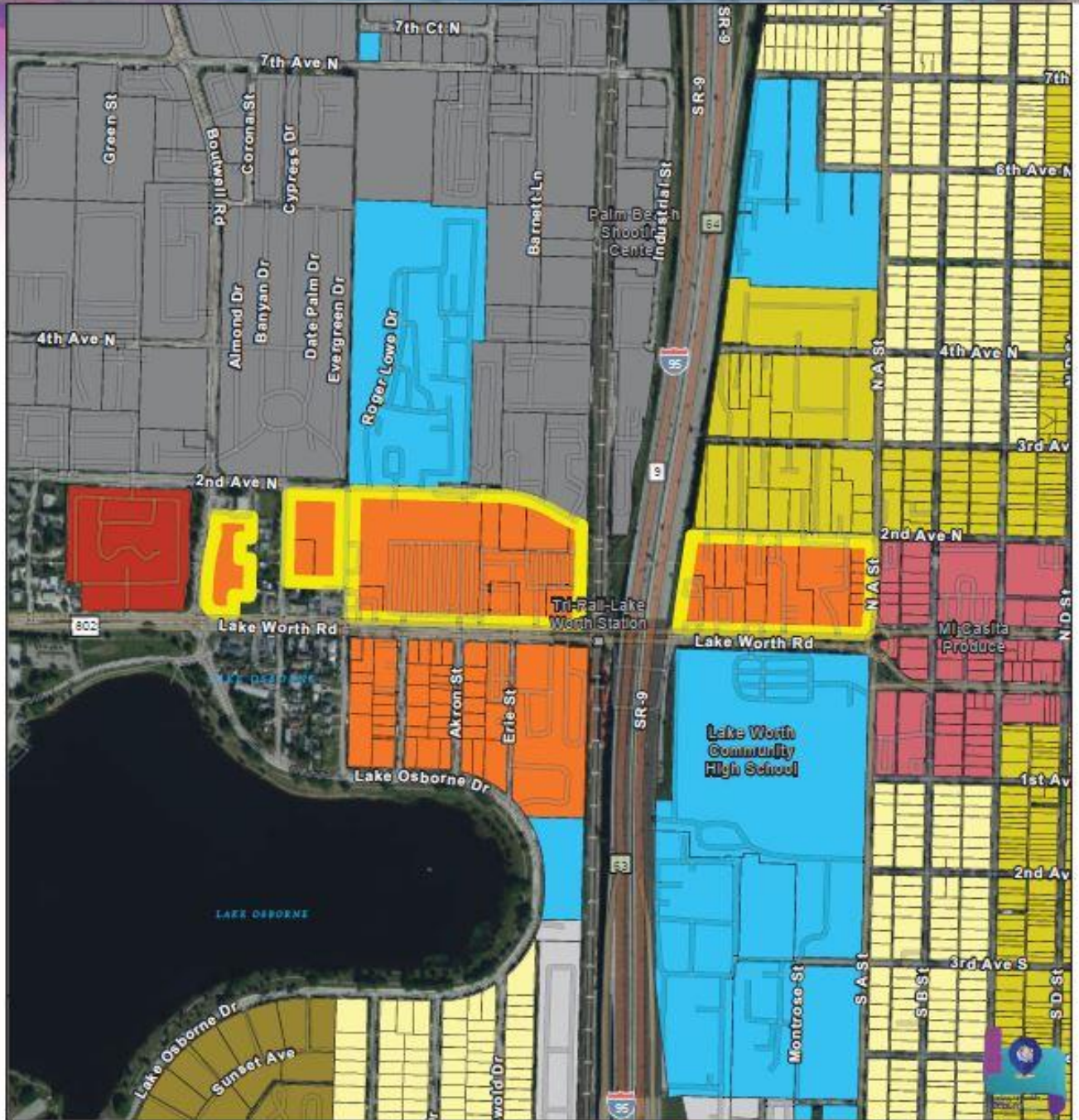


Created: March 19, 2009
Source: City of Lake Worth Beach



Proposed FLU Amendment

City of Lake Worth Beach, FL



Map Legend

Single Family Residential (SFR)	Mixed Use - West (MU-W)	Public (P)
Medium Density Residential (MDR)	Transit Oriented Development (TOD)	Project Area
High Density Residential (HDR)	Artisanal Mixed Use (AMU)	
Mixed Use - East (MU-E)	Industrial (I)	

Created: March 19, 2020
Source: City of Lake Worth Beach