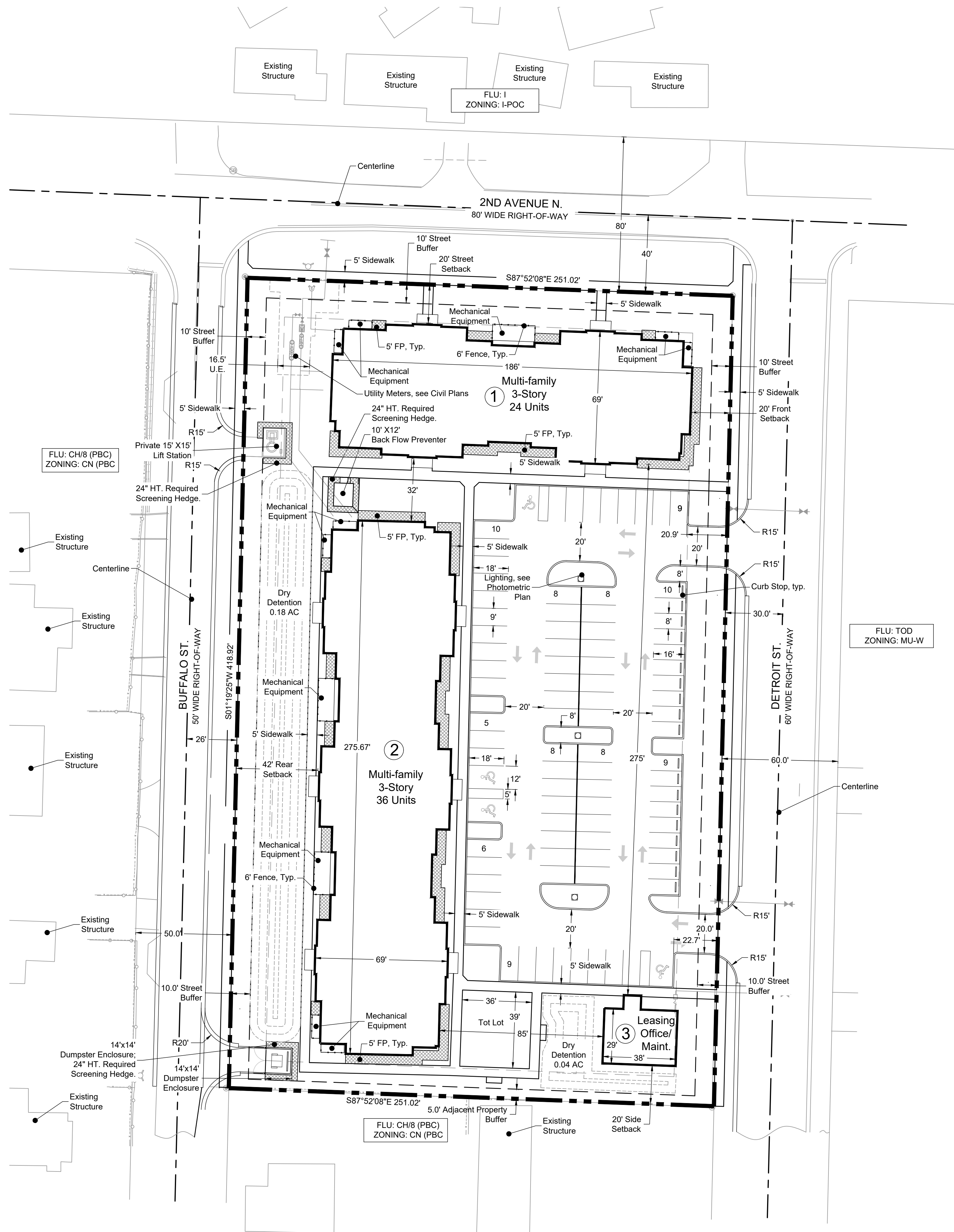
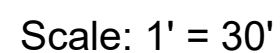
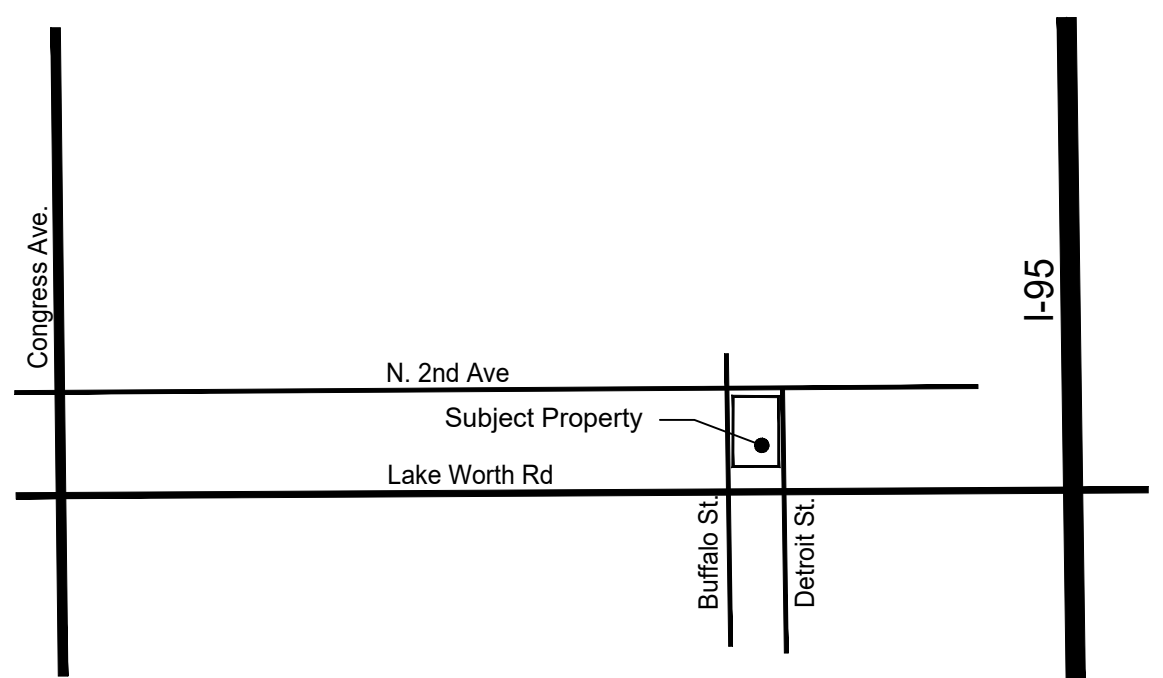


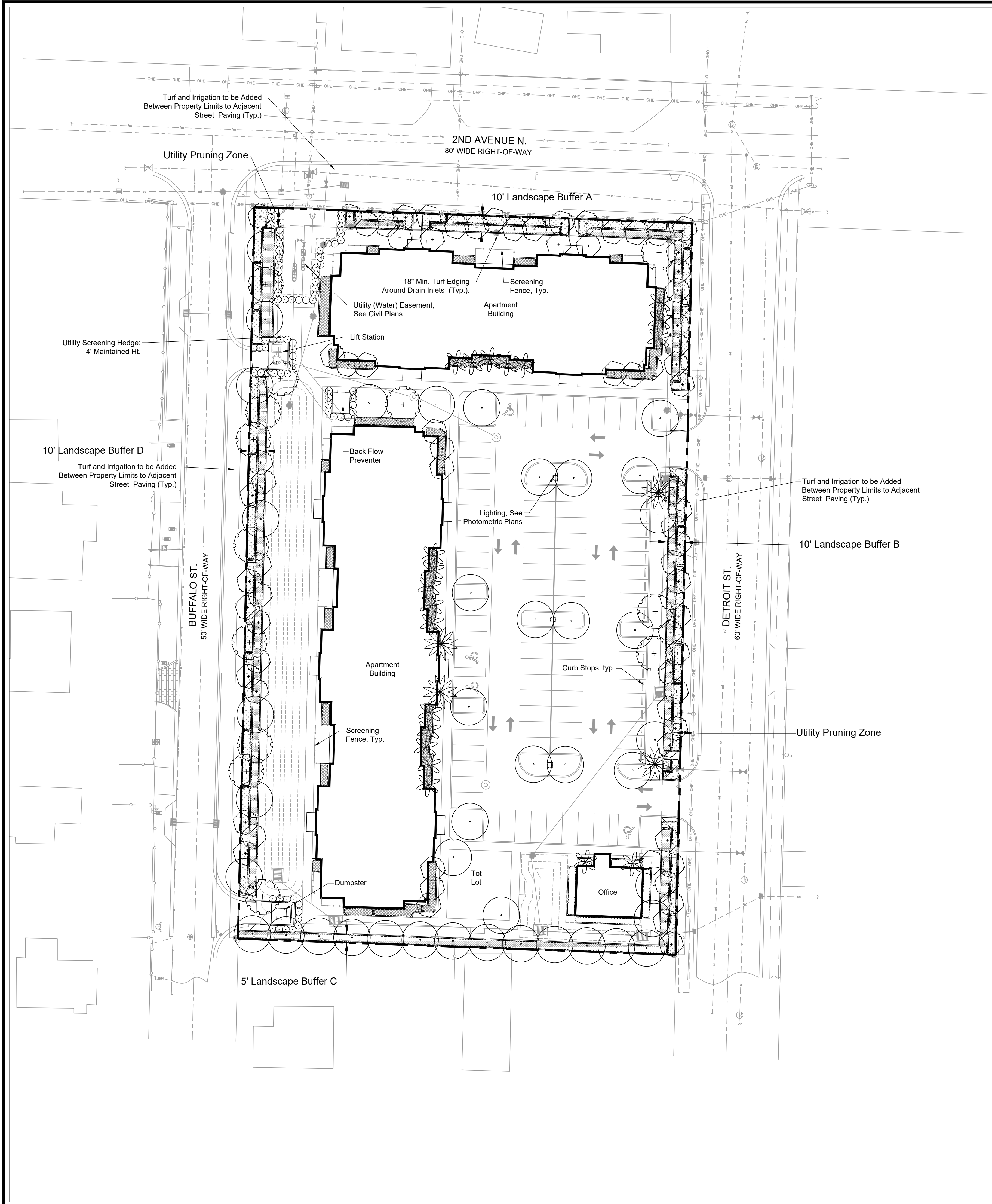
06/21/21	Concierge Review
09/13/21	Submittal
02/10/22	Submittal

SCALE | AS SHOWN
DRAWN | KB/DH
CHECKED BY | LM/JM
FILE |
169.03-Detroit Lane - SP ReSub
DATE | 2022-02-11

Sheet: 1 of 1

1 of 1





Landscape Data	Required	Provided
Interior Landscaping		
Pervious Area (Excluding Retention) = 16,527 SF (15.7%)		
Minimum Number of Trees		
Tree Quantity = 1 Large Tree Per 625 SF (16,527 SF /625 SF)	26	8
Tree Quantity = 1 Medium Tree Per 400 SF (16,527 SF /400 SF)	41	6
Tree Quantity = 1 Small Tree Per 225 SF (16,527 SF /225 SF)	73	17
Palm Tree (3 Palms = 1 Tree*) (20% Max.)	8**	(24 Palms)
Note: Combination of Small, Medium and Large Trees Used to Provide For Aggregated Spacing of 1 Tree Per 420 SF.		
*Three (3) Coconut, Sabal, or Royal Palms will equal one (1) shade tree.		
**20 Mitigation Palms are included in provided tree calculations, see L1.00 for Tree Disposition Plan.		
Perimeter Buffer Landscape Requirements		
Landscape Buffer A (251 LF):		
1 Large Tree Per 25 LF (251 LF/25)	10	0*
1 Medium Tree Per 20 LF (251 LF/20)	13	0*
1 Small Tree Per 15 LF (251 LF/15)	17	17
Hedge: Maintained at 3' Height; Additional groundcover fronting hedge for 10' buffer areas; Groundcover to be Maintained at 1/2 The Height of The Hedge		
*Tree Counts Adjusted for Existing Overhead Utility Conflict		
Landscape Buffer B (419 LF):		
1 Large Tree Per 25 LF (419 LF/25)	17	0*
1 Medium Tree Per 20 LF (419 LF/20)	21	0*
1 Small Tree Per 15 LF (419 LF/15)	28	28
Hedge: Maintained at 3' Height; Additional groundcover fronting hedge for 10' buffer areas; Groundcover to be Maintained at 1/2 The Height of The Hedge		
*Tree Counts Adjusted for Existing Overhead Utility Conflict		
Landscape Buffer C (251 LF):		
1 Large Tree Per 25 LF (251 LF/25)	13	13
Hedge: Maintained at 3' Height		
Landscape Buffer D (419 LF):		
1 Large Tree Per 25 LF (419 LF/25)	17	7
1 Medium Tree Per 20 LF (419 LF/20)	21	7
1 Small Tree Per 15 LF (419 LF/15)	28	14
Note: Combination of Small, Medium and Large Trees Used to Provide For Aggregated Spacing of 15' OC.		
Hedge: Maintained at 3' Height; Additional groundcover fronting hedge for 10' buffer areas; Groundcover to be Maintained at 1/2 The Height of The Hedge		

- Landscape Notes:**
1. All plant material shall meet or exceed FI. No. 1 standards as provided for in the most current edition of Grades and Standards for Nursery Plants as prepared by the State of Florida Dept. of Agriculture.
 2. Unpaved portion of ROW adjacent to the property line shall be landscaped and provided with irrigation and maintenance.
 3. All dumpster and refuse areas and all ground level mechanical equipment shall be screened with shrubbery or with fencing where visible from public rights-of-way.
 4. A minimum of seventy-five (75) percent of all required trees must be South Florida native and seventy-five (75) percent of all other required vegetation must be South Florida native.
 5. All tree pruning shall conform to current standards of the National Arborist Association and ANSI A300 guidelines.
 6. A permit is required to remove a tree.
 7. All prohibited plant species shall be eradicated from the development site and re-establishment of prohibited species shall not be permitted.
 8. In accordance with Lake Worth Beach development regulations, all trees, shrubs and turf areas shall be watered by a fully automatic irrigation system with a rain sensing device to turn off the system during a rain event. Bahia turf areas will not receive supplemental irrigation.
 9. All landscaping and related items shall be installed in accordance with Lake Worth Beach development regulations before the certificate of occupancy is issued.
 10. Florida Friendly Landscaping Principles must be utilized in all designs and installations.
 11. Small maturing trees shall have a minimum height of six (6) feet at the time of planting.
 12. Medium maturing trees shall have a minimum height of eight (8) feet at the time of planting.
 13. Large maturing trees shall have a minimum height of ten (10) feet at time of planting.
 14. Tree species shall be consistent with the recommendation in the most recent publication of Florida Power and Light Company's "Plant the Right Tree in the Right Place".
 15. Root barriers shall be used for all plantings that are within five (5) feet of a utility easement or any other underground utility.
 16. Palms shall contribute no more than twenty (20) percent of the required trees.
 17. Three (3) Coconut, Sabal, or Royal Palms will equal one (1) shade tree.
 18. Palms must be a minimum of twelve (12) feet in height with six (6) feet of gray wood at time of planting.
 19. Hedges shall be a minimum of eighteen (18) inches in height when measured immediately after planting.
 20. No more than fifty (50) percent of the combination of the required interior green space and the required perimeter landscape buffers, shall be planted in lawn grass.
 21. All planted areas not containing annual groundcover are to include 3" depth organic mulch. Cypress mulch is prohibited.
 22. Where lighting conflicts with utility or landscape, field adjustments shall be required. LA to approve all field adjustment.



Plant Material List (100% Native)

Large Tree
Cathedral Live Oak
Gumbo Limbo

Medium Tree
Glaucous Cassia
Simpson's Stopper

Small Tree
Spanish Stopper
Pigeon Plum
Orange Geiger Tree
Buttonwood
Dahoon Holly

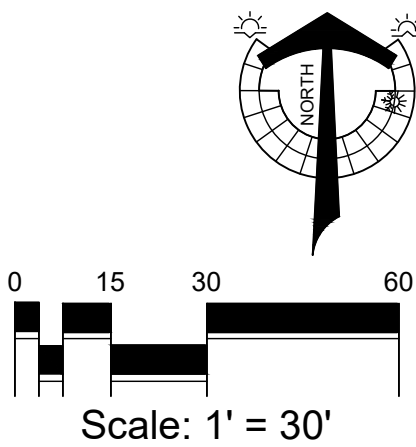
Palm Tree
Florida Royal Palm
Cabbage Palm

Hedge
Walter's Viburnum
Red-tipped Cocoplum
Bahama Coffee

Shrub
Buttonwood
Silver Buttonwood
Red-Tipped Cocoplum
Natal Plum
Hairy Yucca
Dune Sunflower
Soft Rush Grass
Fakahatchee Grass
Firebush
Stokes Dwarf Yaupon Holly
Cardboard Cycad
Coontie Fern

GRAPHIC LEGEND

- Palm Tree
- Large Tree
- Medium Tree
- Small Tree
- Palm Tree - Mitigation Replacement
- Utility Screening Hedge
- Building Landscape - 1 Shrub Per 5 SF of Landscape Area
- Buffer Landscape - Hedge
- Buffer Landscape - Small Shrub



LANDSCAPE PLAN

PLANNING | LANDSCAPE ARCHITECTURE
3910 RCA Blvd., Suite 1015 | Palm Beach Gardens, FL 33410

Detroit Lane Property

Prepared for Southport Financial Services
Lake Worth Beach, Florida

This item has been electronically signed and sealed by Jennifer Lee Morton on the date and/or time stamp shown using a digital signature. Printed copies of this document are not considered signed and sealed and the signature must be verified on any electronic copies.

SEAL:
REGISTERED LANDSCAPE ARCHITECT
JENNIFER LEE MORTON
LA 0001666
STATE OF FLORIDA

REVISIONS	
06/21/21	Concierge Review
09/13/21	Submittal
02/10/22	Submittal

Landscape Plan	
SCALE	AS SHOWN
DRAWN	KB
CHECKED BY	HPH
FILE	169-03-Detroit Lane - Landscape R3
DATE	2021-09-13

L1.01