



POWER INSTRUMENTS

Northeast & East Canada Regional

255 North Union Street, Rochester, NY 14605 U.S.A.
Telephone: 585-238-478-4860 Fax: 585-454-7805
E-mail: sal.cardella@ametek.com

**To: Lake Worth Beach Utilities
1900 2nd Avenue North
Lake Worth Beach, FL 33461**

Date: May 15, 2023

Attn: David Martyniuk Tel.

From: Sal Cardella Tel: 585-478-4860/Fax: 585-454-7805

Subject: JEMStar II Meter Quote

Quote #: 051523SC01
Validity: 90 Days
Lead Time: 4-6 Weeks
Shipping Terms: Factory Prepaid & Add
Payment Terms: Net 30
Warranty: 5 Years from shipment

Dear David,

Thank you for the opportunity to quote the JEMStar II Revenue Meter and your interest in Ametek Power Instruments.

High precision and ease of use best describe the JEMSTAR II revenue meter. Quick intuitive setup using Windows based software makes configuration a breeze. For revenue and billing, the JEMSTAR's II 10 year guaranteed high accuracy of 0.05% guarantees that every measurement is properly accounted for. The JEMStar II has a 10 digit color graphical display which will help the operator view registers as well as full site diagnostics. Anticipate loads in advance with our demand prediction option. Our advanced communication options provide many choices and protocol platforms for easy access to our metering data. For peace of mind, your site conditions are continuously monitored with our diagnostic tools that notify you quickly of any impending problem.

Please see the following pages for the JEMStar II options we can provide. Should you have any questions, please do not hesitate to contact me.

Regards,

Sal Cardella

Sal Cardella
Regional Manager – Southeast
Ametek Power Instruments
585-478-4860
Sal.cardella@ametek.com

The following is a summary of the unit specifications:

- Auto ranging potentials 55-530 Vac
- Available current class 20, 10, and 2
- Universal power supply
 - 55-530 Vac, 90-265 Vdc
 - Standard with all switchboard meters
 - Special ordered with socket and A-base meters
- Meter forms 5, 6, and 8, 9, 45 Universal available
- Highest accuracy on the market. Watt-hour 0.05% guaranteed 0.01% typical. Certified to ANSI 12.20 and IEC 687.
- Advanced Color Graphic display enables real time vector diagram, communication status, alarms page and custom customer messages and headers.
- Programmable using our Windows based software JEMWare II and also using our panel buttons on the front of the meter.
- Easy to set up display registers with up to 50 normal, 50 alternate and 50 test registers
- Display registers can be set up as 6 -10 digits
- Displays registers can auto scroll or be manually scrolled when configured with Jemware II.
- 4 quadrant metering as well as per phase quantities
- 16 channels load profile standard and can be upgraded at the factory and in the field for Qty (2) 16 channels separately configurable load profile channels (Extra fee required)
- Load profile information can be turned on and off by a contact input if a DI/DO board is added.
- 8 Time of Use rates standard
- TLC and line loss configured with Jemware II.
- Site monitor and threshold alarms for sags, swells, per phase, V, I, PF, Power Reversal, etc.
- Demand prediction standard
- 4 scalable analog outputs optional (additional fee). User defined functions using JEMWare II.
- Three simultaneous serial communication ports available (RS232, RS232/RS485, RS232/RS485)
- 56K Internal modem available
- Ethernet – DHCP or Fixed IP Address, Single or Dual (Up to 12 simultaneous users each)
- An optical port standard
- Modbus and DNP 3.0 protocols standard
- Analog & contact I/O (optional) internal to the meter

Item 1 - JEMStar II Electricity Revenue Meter

Model Code: JSII-UR6010-1B/2B/3A/DIO/AO1-IB-PQ

Quantity: 13

- JSII** -- JEMSTAR II revenue meter w/ DNP, ModBus and 16 Channels Load Profile
- U** -- Universal Form 5/9, 3 Phase, 4 Wire WYE, 3 Wire Delta (Available with A-base & SWBD Only)
- R** -- Switchboard Enclosure
- 60** -- 60 Hz Operation
- 10** -- Current Class 10
- 1B** -- Dual Serial Port (1 Port Configurable for RS232/RS485)
- 2B** -- Dual Ethernet port
- 3A** -- Analog Modem
- A01** -- Qty (4) Analog Outputs (0 – 1 mAdc)
- IB** -- IRIG-B Time Sync
- PQ** -- PQ Ready

-

Item 1 - Price Each (Ex-Works Rochester, NY)Price: \$7,462.00 USD Each

Quantity: 13Price: \$97,006.00 USD

Meter Packaging (Retrofits Available Upon Request)



Switchboard Meter



Socket Meter

Register Screens



Configurable Registers per Screen (1, 2, 3 or 4 registers)

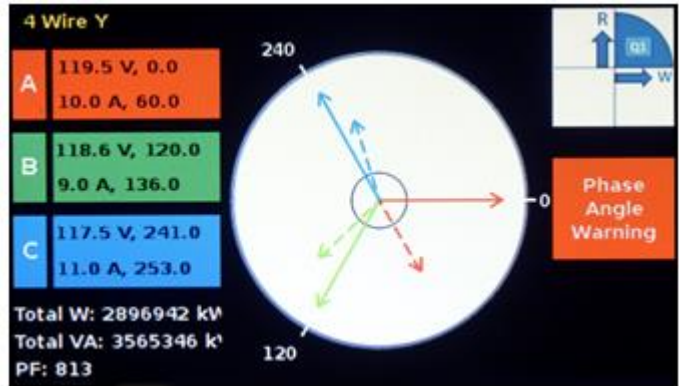
Diagnostic Screens

Communication Status 01/09/2014 10:52:59 EST

Protocols	Optical	Serial1	Serial2	Serial3	Modem	Ethernet1	Ethernet2	WiFi
JEM Binary								
Modbus								
DNP								
DLMS								
ANSI								
IEC 61850								
IEC 870-5-102								
PMU								
WEB								

■ Ready
 ■ Active
 ■ Alert
 ■ Fault

Communication Status



Site Diagnostics (Vector Screen)

Meter Display Menu



Available Using Five Grey Buttons under the Globe

Meter Security

The JEMStar II includes security features that satisfy NERC CIPS requirements. Username & password combinations are required to access secure data and configuration details. The meter communications are password protected to prevent unauthorized access. Ethernet connections can be restricted to select IP addresses. Audit logs store all access attempts; including meter connection, configuration, firmware changes and data access with username and time/date for each occurrence. The audit log requires permission to view and cannot be modified or deleted from the meter.

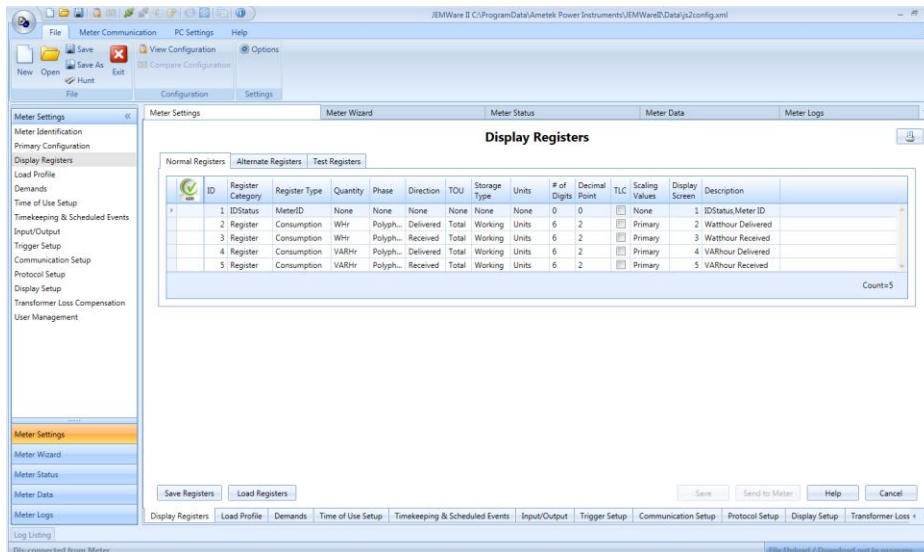


Item 2 – Meter Software

JEMWare II - Meter configuration software - The JEMStar II is easy to configure with AMETEK’s intuitive JEMWARE Software that includes a Configuration Wizard to guide you through the necessary set-ups for your metering application.

- True Windows based software
- Built in Configuration Wizard
- Help menus available for all screens
- Admin and Individual logins (Up to 12)
- View real time data on-site
- Vector Diagrams to verify site status.
- TLC & LLC configuration
- Individual configuration files
- Can be programmed off-line.
- View Registers Values & Load Profile

View Events and Alarms



Price per copy Price: Included with Meter

JEMStar II Retrofits

The AMETEK JEMStar High Accuracy Revenue meter is available in several plug and play configurations to retrofit your old meters. This speeds up your installation time and reduces your costs by re-using your existing meter enclosure and wiring. The JEMStar is a form-fit-function replacement of your old meter and provides the added advantage of higher accuracy, more communication choices and more capabilities.

Cost Effective Upgrade

The JEMStar Retrofit can be installed in a fraction of the amount of time required for other replacements. In most cases, it can be done without disconnecting power or removing any wiring. The retrofit kit includes all materials and hardware for a plug and play installation into your existing enclosure. It's as simple as:

1. Remove the enclosure cover
 2. Pull out meter stab plate and old meter
 3. Insert the new meter cover adaptor
 4. Slide in new JEMStar retrofit
 5. Insert the meter stab plate and new cover
- Your done!

The JEMStar Retrofit can be easily cost-justified by the reduced installation cost alone.



J1	JEM-1 Tall Switchboard Retrofit
J1F	JEM-1 Front Mounted Terminals
J2	JEM-2 Retrofit (Includes Cradle & Door Assembly)
J10	JEM-10 Retrofit
JS	JEMStar Retrofit
Q	Quantum 121 & 220 Replacement (Includes Cradle and Door Assembly)
Q4	Quad 4 Retrofit
TD	MarkV Switchboard Retrofit
G1	GE DS63 Retrofit
G2	GE DSW63 Retrofit (must include 5KYZ option)
G3	GE DS64 Retrofit
G4	GE DSW64 Retrofit (must include 5 KYZ option)
G5	GE Phase 3 Retrofit
G6	GE DS65 Retrofit
W1	Westinghouse Retrofit (Westinghouse D2B-2F, D4B-8F)