

ORDINANCE NO. 13-2024

AN ORDINANCE OF THE TOWN COMMISSION OF THE TOWN OF LAKE PARK, FLORIDA, AMENDING CHAPTER 30, ARTICLE I TO CREATE A NEW SECTION 30-6 PERTAINING TO THE OPERATION OF MICROMOBILITY DEVICES, GOLF CARTS, LOW SPEED VEHICLES, AND MOTORIZED SCOOTERS; PROVIDING FOR THE AMENDMENT OF CHAPTER 30, ARTICLE II SECTION 30-35 PERTAINING TO HIGH-CAPACITY PASSENGER OR WORK VANS; PROVIDING FOR SEVERABILITY; PROVIDING FOR CODIFICATION; PROVIDING FOR THE REPEAL OF ALL LAWS IN CONFLICT; AND PROVIDING FOR AN EFFECTIVE DATE.

WHEREAS, the Town of Lake Park, Florida (Town) is a duly constituted municipality having such power and authority conferred upon it by the Florida Constitution and Chapter 166, Florida Statutes; and

WHEREAS, the Town's Community Development Department has created a new Chapter 30, Article I, Section 30-6 of the Town Code providing for definitions, and regulations pertaining to the operation of low speed vehicles, micromobility devices, motorized scooters, and golf carts within the Town and recommends the adoption of the same; and

WHEREAS, the Community Development Department recommends amendments to Chapter 30, Article II, Section 30-35 of the Town Code to provide for an updated definition for high-capacity passenger van or work van; and

NOW, THEREFORE, BE IT ORDAINED BY THE TOWN COMMISSION OF THE TOWN OF LAKE PARK, FLORIDA:

Section 1. The whereas clauses are incorporated herein as the legislative findings of the Town Commission.

Section 2. Chapter 30, Article I, Section 30-6 is hereby created to read as follows:

(...)

Sec. 30-6. Low Speed Vehicles, Micromobility Devices, Motorized Scooters, and Golf Carts.

- (a) Definitions. The following terms when used herein shall have the meanings defined below.

Golf Cart means a motor vehicle as defined in F.S. 320.01 (22), as amended, that is built for operation on golf courses or for traveling short distances that is not capable of exceeding speeds of 20 miles per hour.

Low Speed Vehicle means a motor vehicle as defined in F.S. 320.01, as amended, that is capable of reaching speeds of at least 20 miles per hour, but not greater than 25 miles per hour.

Micromobility Device means any motorized transportation device as defined by F.S. 316.003 (41) made available for private use by reservation through online application or software for point-to-point trips and which is not capable of exceeding speeds of 20 miles per hour. This term shall include motorized scooters.

Motorized Scooter is a type of micromobility device and means any vehicle or micromobility device, as defined by F.S. 316.003 (48), that is powered by a motor, with or without a seat, designed to travel on not more than three wheels, and which is not capable of speeds greater than 20 miles per hour.

Multimodal Pathway or Multimodal Way is a type of shared use path intended to be used by micromobility devices, bikes, and scooters, and in some cases golf carts as identified in the 2045 Lake Park Mobility Plan map and further defined in the graphic of the Complete Streets section under Multimodal Projects.

Right of way means any public or private right of way, town, county, state or federal improved road.

- (b) Operation of Low Speed Vehicles and Golf Carts.

- (1) In accordance with F.S. 316.212 golf carts and low speed vehicles may be operated on private properties and right of ways (except sidewalks unless constructed as an approved multimodal pathway at least 8 feet in width) within the Town of Lake Park subject to the posted speed. Golf carts may be operated within the town's rights of way in accordance with the posted speed

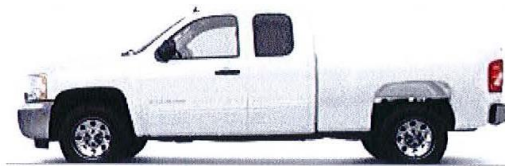
-
- limits not exceeding 25 miles per hour. Golf carts are not permitted to travel along Northlake Boulevard, Federal Highway, 10th Street, Prosperity Farms Road, Old Dixie Highway, Silver Beach Road, North Congress Avenue, or Watertower Road. Low speed vehicles shall be permitted on rights of way with posted speed limits not exceeding 35 miles per hour. Golf carts may be operated on the Town's multi-modal pathways, as established by the October 26, 2023 Revision of the 2045 Lake Park Mobility Plan and where posted signage allows, at speeds not exceeding 15 miles per hour. Low speed vehicles may not be operated on multi-modal pathways.
- (2) All golf carts shall be equipped with headlights, brake lights, turn signals, two round red reflectors of a minimum of three inches in diameter affixed to the rear of the golf cart within six inches of each side edge, and a windshield.
 - (3) All low speed vehicles shall be equipped with headlamps, stop lamps, turn signal lamps, taillights, reflectors, parking brakes, mirrors, windshields, seat belts, and VINs.
 - (4) All golf carts and low speed vehicles operated within the Town shall comply with applicable state statutes pertaining to the operation of golf carts and low speed vehicles. Any violation of applicable state statutes shall be a violation of this article. Golf cart and low speed vehicles shall comply with all applicable local and state traffic laws and operators may be issued citations or traffic or moving violations.
 - (5) Golf carts and low speed vehicles may only be operated by individuals in accordance with state law, including licensing, registration, and insurance. Low speed vehicles may be operated by individuals possessing a valid driver's license. License, registration, and insurance requirements for low speed vehicles must be in accordance with state law.
- (c) Operation of Micromobility Devices and Motorized Scooters.
- (1) In accordance with F.S. 316.2128, micromobility devices and motorized scooters shall not be required to have a driver's license to operate. Users under 16 years of age are required to wear a helmet. Micromobility devices and motorized scooters shall comply with all the requirements applicable to bicycles established under F.S. 316.2065, except as exempted. Motorized scooters and micromobility devices may be operated within Town limits on sidewalks, bike lanes, and multi-modal pathways as established by the October 26, 2023 Revision of the 2045 Lake Park Mobility Plan and where posted signage allows, at speeds not exceeding 15 miles per hour.
- (d) Enforcement of Provisions.
- (1) The Town's Law Enforcement provider shall enforce the provisions contained within this article.

Secs. 30-~~76~~—30-30. Reserved.

Section 3. Chapter 30, Article II, Section 30-35 is amended as follows:

Sec. 30-35. Parking of commercial vehicles in residential districts.

(...)



High-capacity passenger van or work van. A high-capacity passenger van means a vehicle with normal carrying passenger capacity of more than seven passengers, used to carry passengers, with a linear non-varying roofline, from front to back, extending over the passenger area and a glass area along the side of the van enabling passenger visibility. A work van is means a vehicle that is used to store work materials and rooftop cargo, with a linear non-varying roofline, from front to back except for the rooftop cargo, extending the entire length of the vehicle and a possible side entrance door to access materials. Example (for illustrative purposes only):



(...)

Secs. 30-36—30-60. Reserved.

Section 4. Severability.

If any section, subsection, sentence, clause, phrase or portion of this ordinance is for any reason held invalid or unconstitutional by any court of competent jurisdiction, such

portion shall be deemed a separate, distinct and independent provision and such holding shall not affect the validity of the remaining portions thereof.

Section 5. Codification.

The sections of the ordinance may be renumbered or re-lettered to accomplish such, and the word "ordinance" may be changed to "section", "article", or any other appropriate word.

Section 6. Repeal of Laws in Conflict.

All ordinances or parts of ordinances in conflict herewith are hereby repealed to the extent of such conflict.

Section 7. Effective Date.

This ordinance shall take effect immediately upon execution.

#5699007 v1 26508-00002