

FILE: P:\STALP\PROJECTS\1220 10TH STREET 22-0519\DRAWINGS\CURRENT\1220 10TH STREET ACCESSORY BLDGS PLAN 2013\_REV1.DWG  
PLOTTED: 6/7/17 5 AT 2400\N1BY: DSE/SEN  
XREFS: X222019\_A-11.DWG X222019\_A-11.DWG X222019\_A-11.DWG X222019\_A-11.DWG

## LANDSCAPE NOTES:

- THE LANDSCAPE ARCHITECT OF RECORD SHALL VERIFY THAT THE INSTALLATION COMPLIES WITH THE APPROVED PLAN OF RECORD. THIS VERIFICATION INCLUDES THE SPECIES (TYPE, QUANTITY, AND OTHER ORIGINAL PLANTING, SPECIFICATIONS) DESIGN OR LOCATION, IRRIGATION, AND ALL OTHER LANDSCAPE STRUCTURES AND MATERIAL USED IN ACCORDANCE WITH THE SITE PLAN.
- ALL PLANTING AREAS (INCLUDING SOD) SHALL RECEIVE 100% COVERAGE FROM A FULLY AUTOMATIC IRRIGATION SYSTEM, EQUIPPED WITH A RAIN SENSOR.
- EXISTING IRRIGATION SYSTEM TO BE MODIFIED TO ACCOMMODATE PROPOSED SITE AND LANDSCAPE REDEVELOPMENT.
- IRRIGATION SOURCE SHALL BE POTABLE OR WELL WATER SOURCE.
- ALL PLANTING BEDS/ISLANDS SHALL BE FREE OF SHELLROCK THREE (3) AND CONSTRUCTION DEBRIS, EXCAVATED TO A DEPTH OF 30" OR TO CLEAN NATIVE SOILS AND BACKFILLED WITH THE SPECIFIED BACKFILL MIXTURE.
- ALL TREES UNDER FPL POWER LINES ARE REQUIRED TO COMPLY WITH THE FPL PLANT THE RIGHT TREE IN THE RIGHT PLACE' GUIDELINES.
- ALL LANDSCAPE ISLANDS SHALL INCORPORATE THE INSTALLATION OF MOUNDING OF NATIVE SOILS A MIN. OF 6" ABOVE THE TOP OF CURB.
- ALL PLANT MATERIAL SHALL MEET THE FLORIDA GRADES AND STANDARDS OF FL #1 QUALITY OR BETTER.
- THE CONTRACTOR IS RESPONSIBLE FOR ANY DAMAGE DONE TO UTILITIES AS A RESULT OF THIS WORK.
- ANY WATER AND/OR SEWER CONNECTIONS MUST BE COORDINATED AND SUPERVISED BY UTILITY DISTRICT PERSONNEL. PLEASE GIVE 72 HOURS' NOTICE FOR CONNECTIONS.

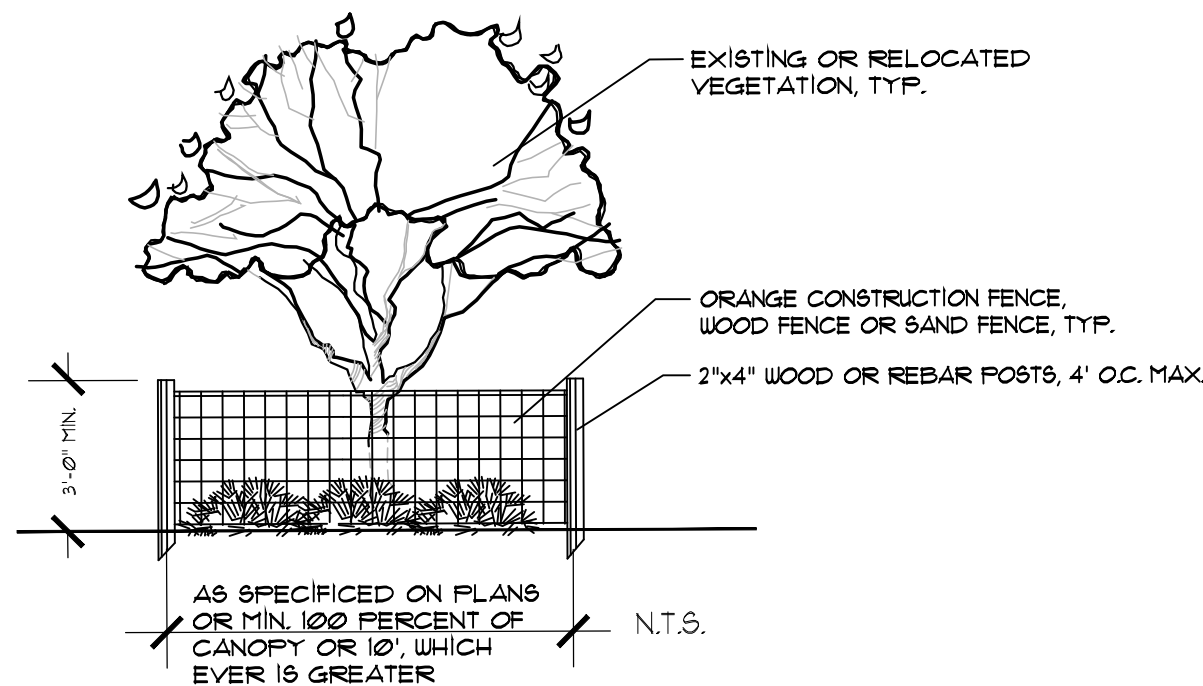
## EXISTING NATIVE TREE MITIGATION TABLE:

TREE LEGEND						
QV=	LIVE OAK					
D.B.H.=	DIAMETER BREAST HEIGHT					
Tree No.	Tree	Height (Ft.)	Tree Count	Action	Mitigation Credits Required (Removed From Site)	Tree Credits Counted Towards Mitigation (Relocated On Site)
OAKS						
QV-41	LIVE OAK	14.5	1	Remove	14.5	0
QV-42	LIVE OAK	11.5	1	Remove	11.5	0
QV-43	LIVE OAK	14.5	1	Remove	14.5	0
QV-47	LIVE OAK	9.5	1	Remove	9.5	0
QV-48	LIVE OAK	11.0	1	Remove	11	0
QV-66	LIVE OAK	13.5	1	Relocate	N/A	13.5
QV-76	LIVE OAK	17.5	1	Relocate	N/A	17.5
TOTALS: OAK			7		61	31
Total Credits Based on Sec. 34-9(7)(c)					61	31

TOTAL NUMBER OF TREES TO BE REMOVED :	5
TOTAL NUMBER OF TREES TO BE RELOCATED:	2
TOTAL MITIGATION REPLACEMENT CREDITS REQUIRED:	61
TOTAL RELOCATED MITIGATION CREDITS PROVIDED:	31
TOTAL MITIGATION CREDITS REMAINING:	30
TOTAL MITIGATION REPLACED ON SITE	30

- NOTES:
- ALL TREE MITIGATION CREDITS FOLLOW THE TOWN OF LAKE PARK LDR'S SECTION 34-9(7)(c). SPECIMEN OR POTECED TREES
  - ALL EXISTING NATIVE TREES ON SITE ARE GIVEN CREDITS FOLLOWING TREE CREDITS PER THE TOWN OF LAKE PARKS MITIGATION REQUIREMENTS
  - REFER TO TREE SURVEY PLANS FOR EXISTING LOCATIONS
  - N/A = NOT APPLICABLE TOWARDS COUNTS
  - ALL TREES ARE MEASURED WITH D.B.H.
  - NON-NATIVE TREES & PALMS ARE NOT COUNTED OR CREDITED TOWARDS MITIGATION REQUIREMENTS OR COUNTS

## TREE PROTECTION DETAIL



## FENCING OF UNDISTURBED AREAS:

PRIOR TO THE COMMENCEMENT OF CONSTRUCTION, THE CONTRACTOR SHALL ENCLOSE THE ENTIRE UNDISTURBED AREA, OR TREE, WITHIN A FENCE OR SIMILAR BARRIER AS SHOWN. WOODEN (OR EQUIVALENT) POSTS STEEL REBAR OR WOOD AT LEAST 2 x 4 INCHES SHALL BE IMPLANTED IN THE GROUND DEEP ENOUGH TO BE STABLE AND WITH AT LEAST 3 FEET VISIBLE ABOVE THE GROUND. THE PROTECTIVE POSTS SHALL BE PLACED NOT MORE THAN 4 FEET APART, AND SHALL BE LINKED TOGETHER BY ORANGE NET FENCE FABRIC, OR OTHER, NO HEAVY EQUIPMENT, VEHICLES, STORAGE OF MATERIALS, ETC., SHALL OCCUR WITHIN THE VEG. PROTECTION ZONE. EXTREME CARE SHALL BE TAKEN WHEN WORKING NEAR THE BASE OF TREES. NO FINISH GRADE FILL SHALL BE PLACED WITHIN A ZONE OF 2/3 THE DIAMETER OF THE TREE CANOPY.

FLATWORK CONSTRUCTION WITHIN CANOPY & TREE BARRICADE SHALL BE DONE WITH EXTREME CARE TO MINIMIZE DISTURBANCE TO THE ROOTS BY EXCAVATING, COMPACTING OR ADDING FILL.

UTILITY WORK (TRENCHING) WITHIN THE CANOPY & TREE BARRICADE SHALL BE DONE WITH EXTREME CARE TO MINIMIZE DISTURBANCE TO THE ROOTS BY EXCAVATING, COMPACTING OR ADDING FILL. THE TREE BARRICADE WILL BE MODIFIED TEMPORARILY TO ALLOW ONLY THE MINIMUM WORK ZONE TRESPASS INTO THE CANOPY AREA, CONTINUING TO PROTECT THE REST OF THE CANOPY AREA WITH BARRICADE. NO FILL, EVEN TEMPORARY, SHALL BE PLACED IN ANY PROTECTED ZONE. AT THE CONCLUSION OF SAID ACTIVITY, THE WORKZONE SHALL BE CLEANED UP & TREE BARRICADES REPLACED TO THEIR ORIGINAL CONFIGURATION.

## LANDSCAPE DATA:

GROSS SITE AREA : 2.74 AC. (119,270.67 s.f.)  
TOTAL LANDSCAPE AREA REQUIRED: 17,890.60 s.f. (15%)  
TOTAL LANDSCAPE AREA PROVIDED: 44,575.39 s.f. (37%)

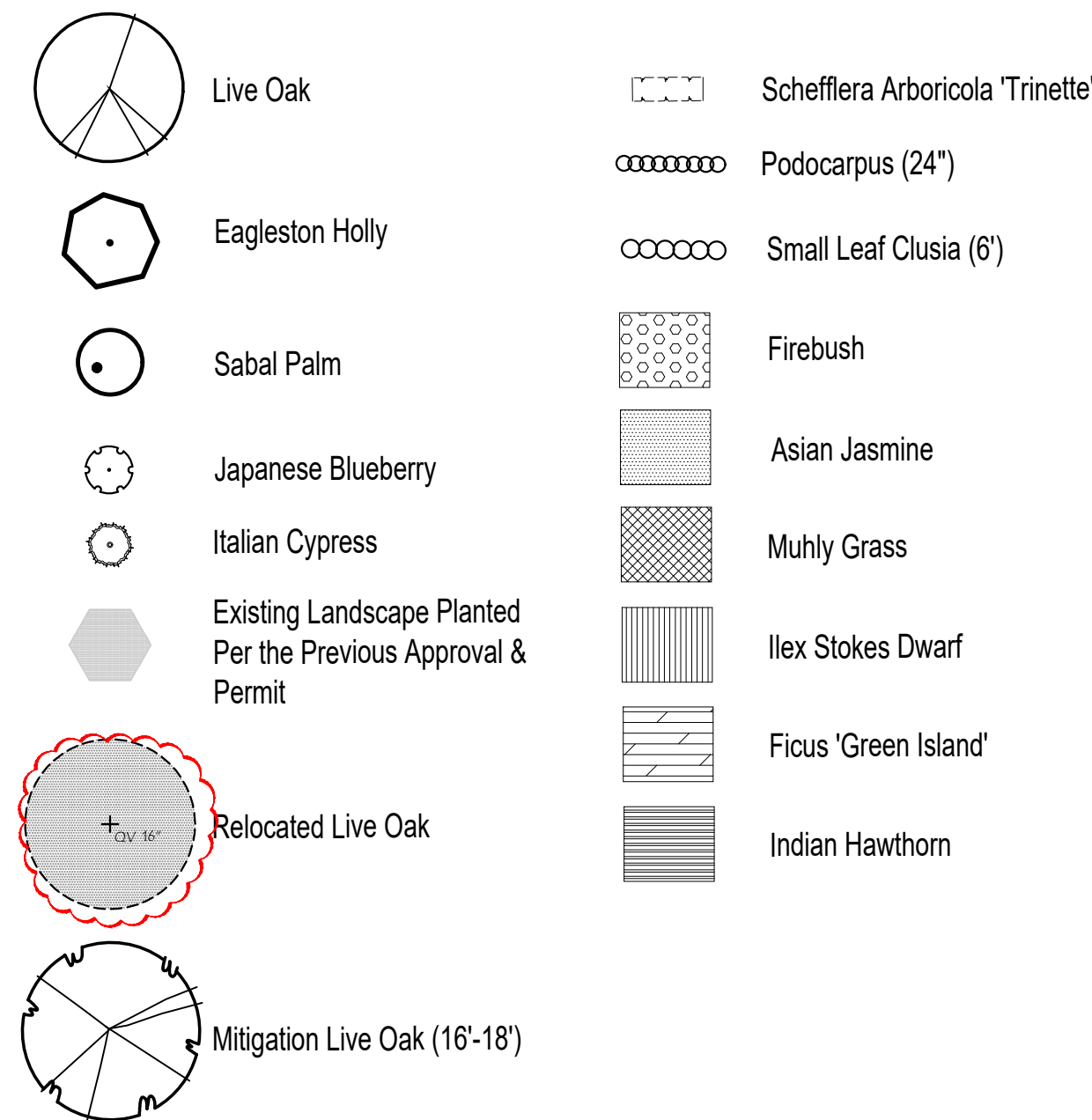
## LANDSCAPE TREE REQUIREMENTS:

	REQUIRED	PROVIDED
NORTHERN PERIMETER (331.90 L.F.)	8 TREES	8 TREES (1:40 L.F.)
SOUTHERN PERIMETER (309.12 L.F.)	8 TREES	8 TREES (1:40 L.F.)
WESTERN PERIMETER (431.48 L.F.)	11 TREES	11 TREES (1:40 L.F.)
EASTERN PERIMETER (348.98 L.F.)	17 TREES	17 TREES (1:20 L.F.) (EX. PALMS = 3:1)
PARKING ISLAND TREES	19 TREES	19 TREES (1 PER ISLAND)
TOTAL TREES	63 TREES	64 TREES (PALMS = 3 TO 1 CANOPY TREE)
PALM SUBSTITUTION (50% MAX)	30 TRIPLE SETS MAX	14 SETS; 23% SETS MAX

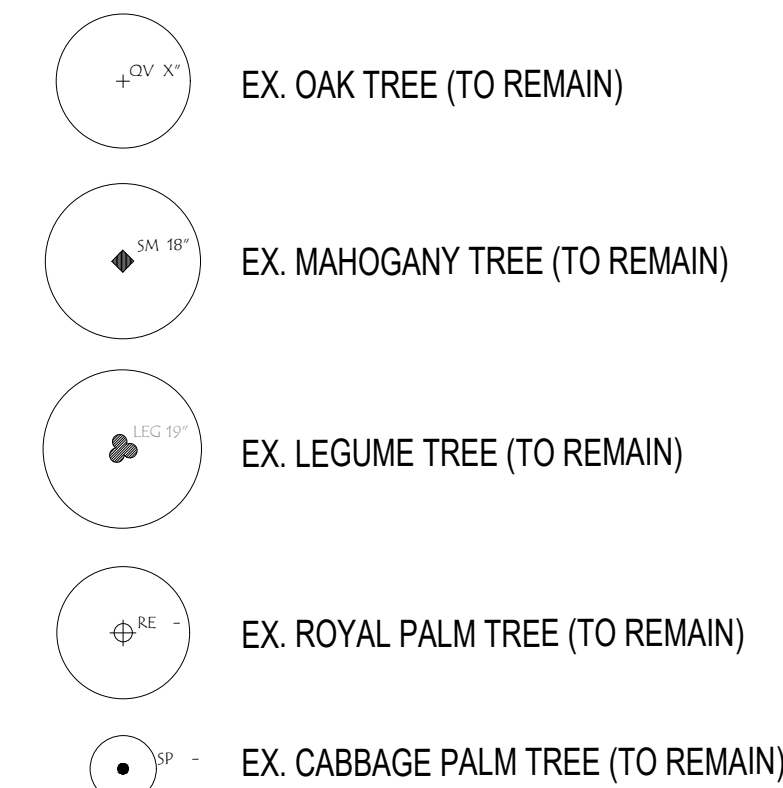
## OTHER LANDSCAPE REQUIREMENTS

- MINIMUM 30" HIGH SHRUBS, PLANTED 18" O.C. AROUND MONUMENT SIGNAGE.
- MINIMUM 30" HIGH HEDGE INSTALLED ALONG PERIMETER BUFFERS.
- MINIMUM 36" HIGH HEDGE INSTALLED AROUND DUMPSTER ENCLOSURE(S).

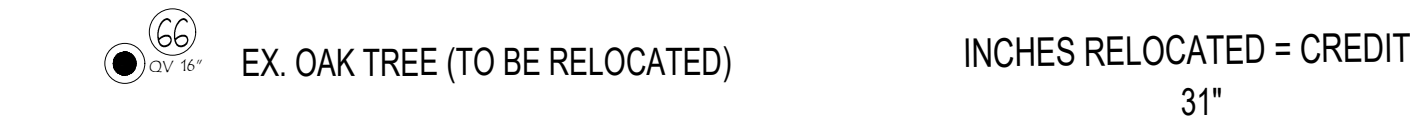
## PROPOSED LANDSCAPE LEGEND



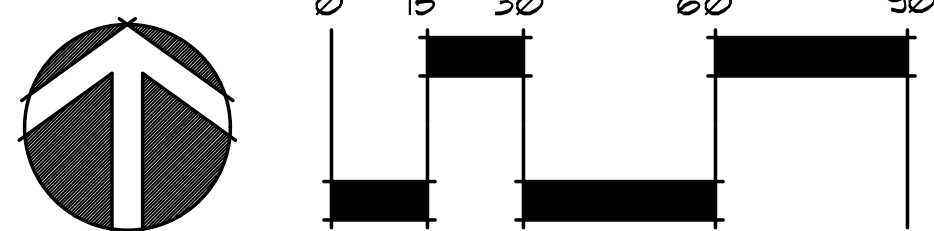
## EXISTING TREE LEGEND (REMAIN)



## EXISTING TREE LEGEND (RELOCATE)



## EXISTING TREE LEGEND (REMOVE)



© Copyright 2021 All Rights Reserved

**2GHO INC.**

Landscape Architects  
Planners  
Environmental  
Consultants

1907 Commerce Lane  
Suite 101  
Jupiter, Florida 33458  
561-575-9557  
561-575-5260 FAX  
www.2gho.com

# Landscape Development Plan 1220 10th Street Town of Lake Park, Florida

Designed: GGG  
Drawn: PSS  
Approved: GGG/EOM/MTB  
Date: 5-22-25  
Job no: 22-0414  
Revisions: 6-14-25  
8-28-25  
11-18-24  
12-12-24  
5-22-25  
6-27-25



LC 0000117  
Sheet Title:  
**Landscape  
Development  
Plan**  
Scale: 1"=30'  
Sheet No.  
**LP-1**  
22-0414