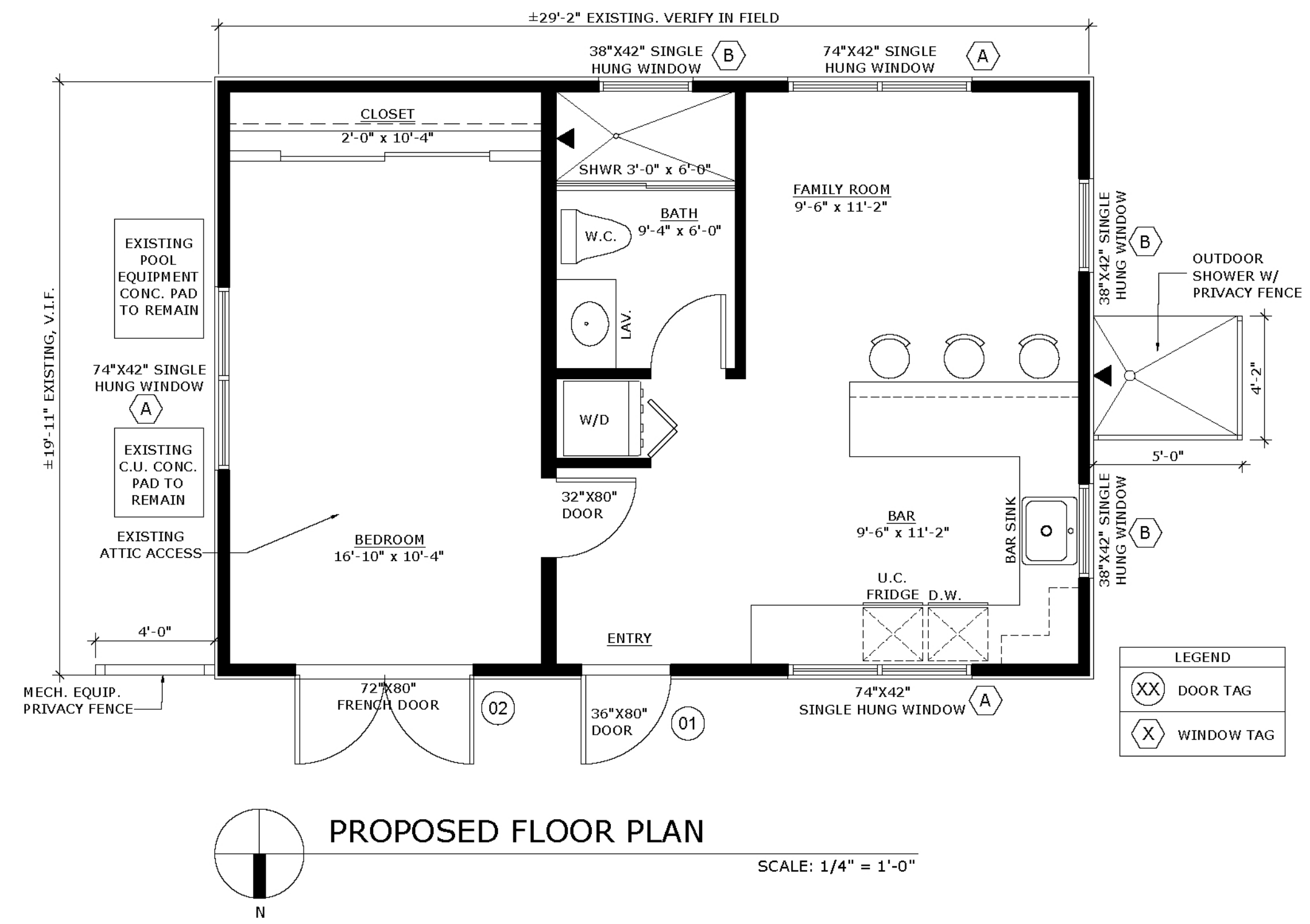
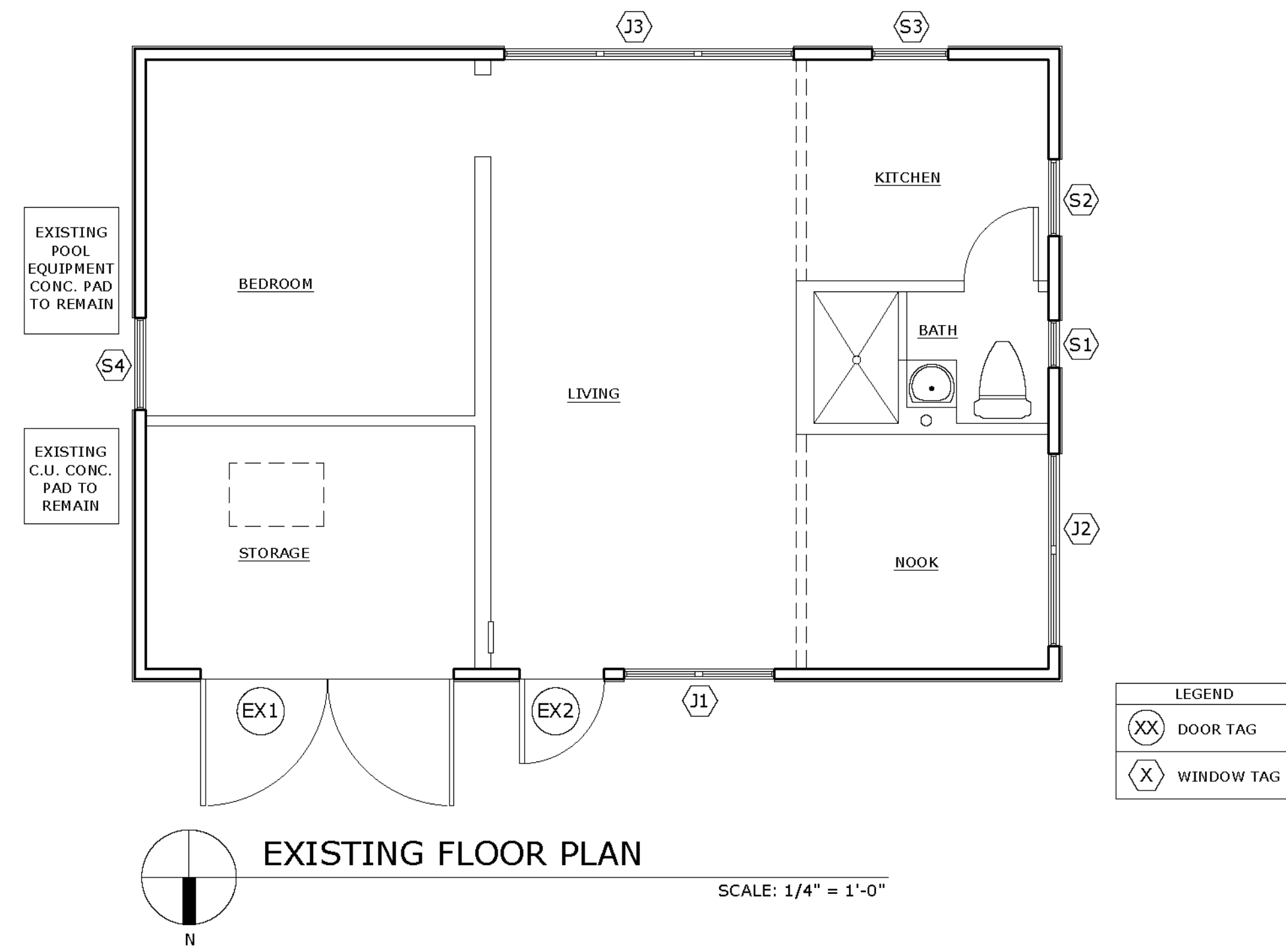
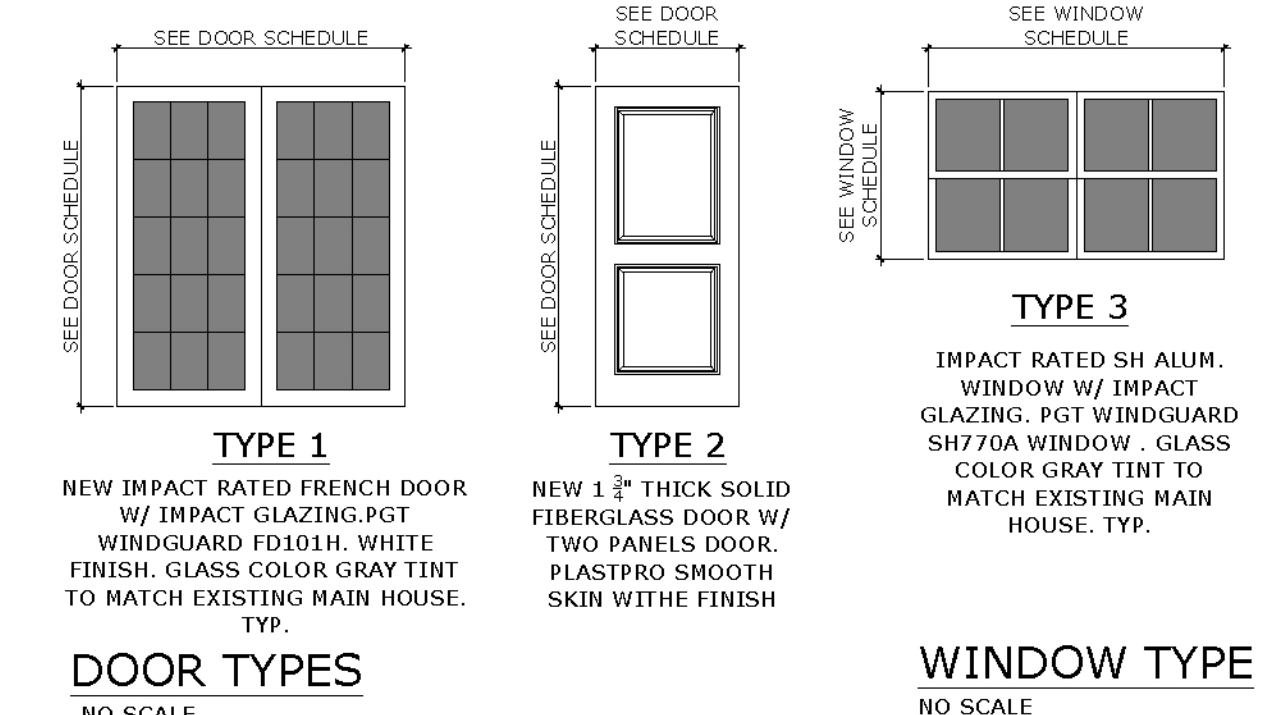


CONTRACTOR AND ALL SUBCONTRACTORS PERFORMING ANY WORK ON THIS PROJECT ARE TO VISIT THE SITE AND VERIFY ALL MEASUREMENTS INCLUDING BUT NOT LIMITED TO BUILDING HEIGHTS, ROOF SLOPES, ROOM DIMENSIONS ETC TO CONFIRM ALL EXISTING CONDITIONS BEFORE ORDERING OR FABRICATING ANY MATERIALS. CONTRACTOR SHALL REPORT ANY INCONSISTENCIES WITH THE CONSTRUCTION DOCUMENTS TO THE ARCHITECT BEFORE CONTINUING WORK.



NEW EXTERIOR WINDOWS & NEW EXTERIOR DOORS SCHEDULE							
MARK	WINDOW TYPE	OPENING SIZE			FINISH	MANUFACTURER	REMARKS
		WIDTH	HEIGHT	TYPE			
(A)(B)	ALUMINUM SINGLE HUNG	SEE PLAN	SEE PLAN	3	WHITE	PGT	IMPACT RATED SH ALUM. WINDOW W/ IMPACT GLAZING. PGT WINDGUARD SH770A WINDOW. GLASS COLOR GRAY TINT TO MATCH EXISTING MAIN HOUSE. TYP. INSTALL WINDOWS PER PRODUCT APPROVALS & SUBMIT NOAs.
MARK	DOOR TYPE	OPENING SIZE			FINISH	MANUFACTURER	REMARKS
		WIDTH	HEIGHT	TYPE			
(01)	SWING DOOR	3'-0"	6'-8" V.L.F.	2	WHITE	PLASTPRO	NEW SOLID FIBERGLASS DOOR W/ TWO PANELS. PLASTPRO SMOOTH SKIN WITH THE FINISH. IMPACT RATED, INSTALL PER PRODUCT APPROVAL & SUBMIT NOAs.
(02)	PAIR - ALUM. FRENCH DOOR	(2) 3'-0"	6'-8" V.L.F.	1	WHITE	PGT	NEW IMPACT RATED FRENCH DOOR W/ IMPACT GLAZING. PGT SENTINEL FD101H. WHITE FINISH. GLASS COLOR GRAY TINT TO MATCH EXISTING MAIN HOUSE. TYP.. INSTALL PER PRODUCT APPROVAL & SUBMIT NOAs.

NOTES:  
1. WINDOW & DOOR SIZES ARE NOMINAL, CONTRACTOR/FABRICATOR SHALL FIELD MEASURE ALL OPENINGS BEFORE FABRICATION.  
2. ALL EXTERIOR WINDOWS AND DOORS ARE IMPACT RATED WINDOWS AND DOORS W/ IMPACT RESISTANT GLAZING. WINDOWS AND DOOR FRAMES TO MATCH EXISTING FINISH AND EXISTING WINDOWS AND DOORS GLAZING TINT.



(1) 10-11-2022 COA COMMENTS  
REV # DATE DESCRIPTION

SEAL

ROGER HANSROTE, ARCHITECT  
FLAR # 14300

REVISION

JOB NUMBER: 2022-53  
DATE: 11-07-2022  
DRAWN BY: AL/MG  
APPROVED BY: RH

SHEET TITLE

PROPOSED PLAN  
& EXTERIOR  
ELEVATIONS

SHEET NUMBER

