

Lake Park Planning & Zoning (P&Z) Board: Presentation on 7th Street Pocket Park Project

Roberto Travieso
Public Works Director

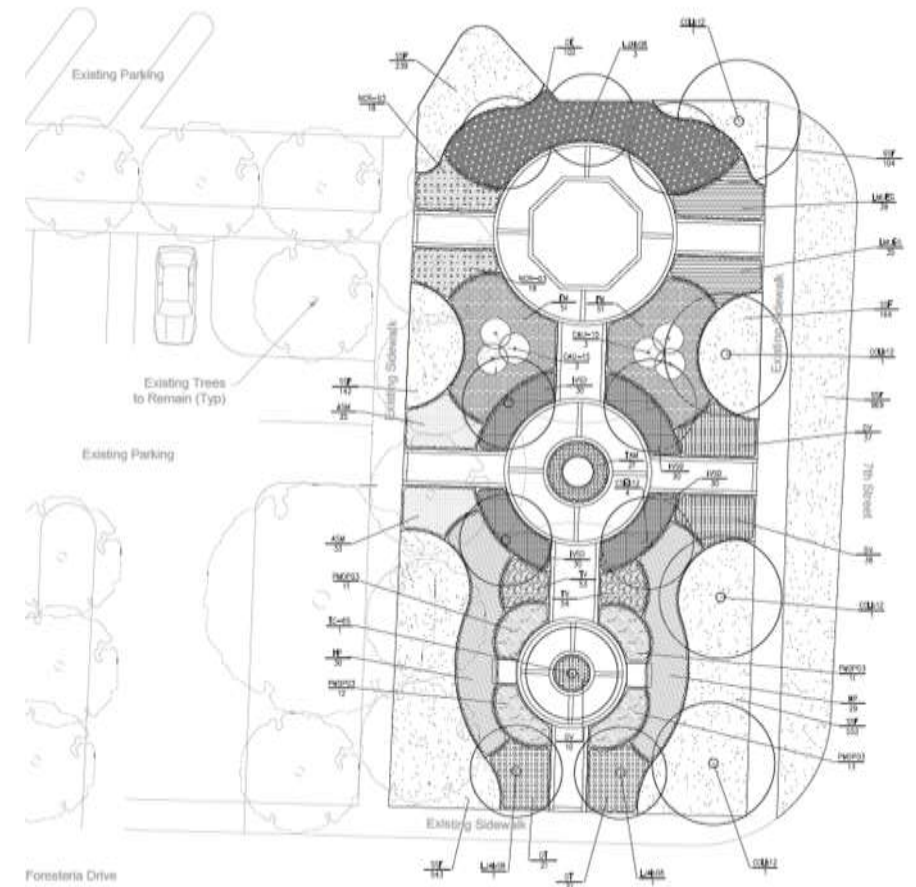
John Wille
Manager, Capital Projects



Presentation Agenda



1. Project Background
2. Design Plan Review
3. Next Steps
4. Q&A





Project Background

ROBERTO TRAVIESO, PUBLIC WORKS DIRECTOR

7th Street Pocket Park – Background



- **Location:** NW corner of 7th Street and Foresteria intersection
- **Address:** 610 7th Street
- **Lot Size:** 0.1150 Acres (5,009 Sq Ft)
- **Owner:** Lake Park Community Redevelopment Agency (CRA)



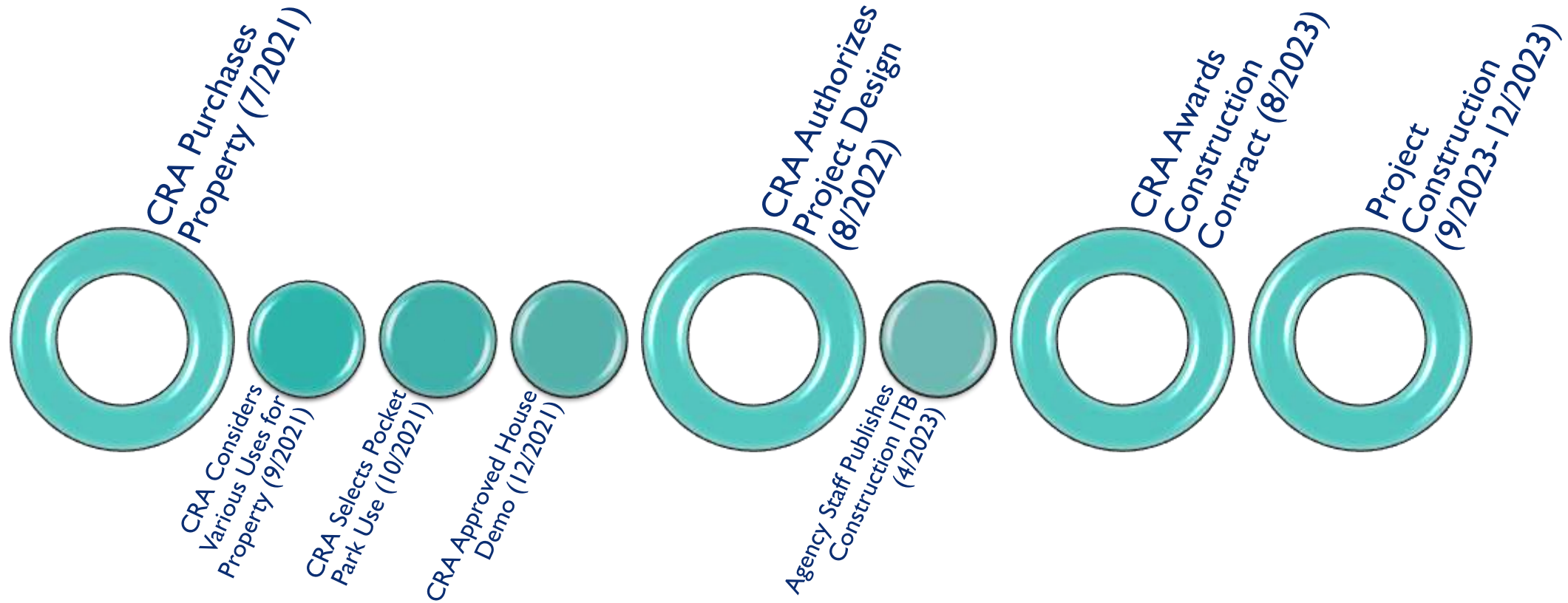
TOWN OF LAKE PARK COMMUNITY REDEVELOPMENT AGENCY

7th Street Pocket Back



GRAPHIC SCALE IN FEET (1"=833 FT)

7th Street Pocket Park – Project Timeline



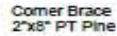


Project Plans Review

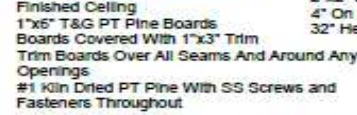
JOHN WILLE, MANAGER, CAPITAL PROJECT



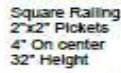
Top Railing
Match Bottom Railing Style



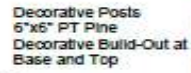
Corner Brace
2"x8" PT Pine



Finished Ceiling 4" On
1"x6" T&G PT Pine Boards 32" H
Boards Covered With 1"x3" Trim
Trim Boards Over All Seams And Around Any
Openings
#1 Kiln Dried PT Pine With SS Screws and
Fasteners Throughout



Square Railing
2"x2" Pickets
4" On center
32" Height



Decorative Posts
6"x6" PT Pine
Decorative Build-Out at
Base and Top

Concrete Pad under Gazebo Contractor to Provide Shop Drawings

A photograph of a wooden park bench with a curved metal frame, set against a red wall. The bench is made of light-colored wood slats and has a dark metal frame with curved armrests and legs. It is positioned on a paved surface.



Ivory

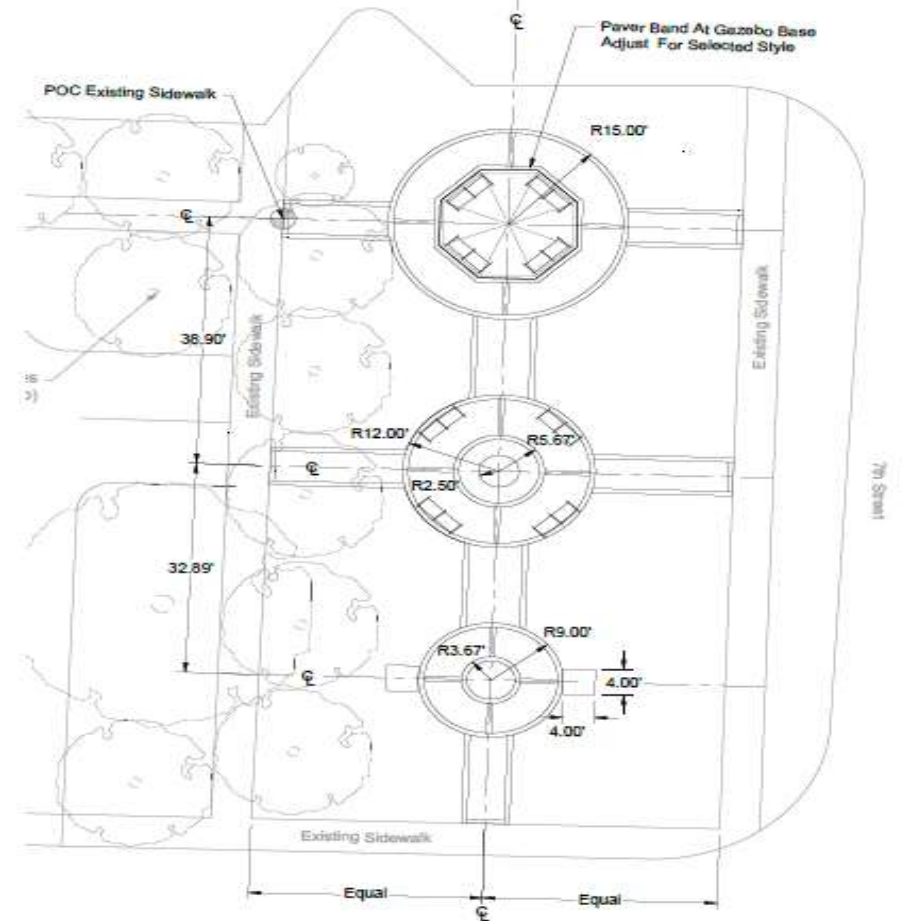
Silver Sam

Concrete Pad

Concrete Pad Data

- Tool Exposed Edges
- Turf or Shrubs; See Plan
- Poured Concrete Pad
6" Thick; Smooth Finish
3,000 PSI Min. at 28 Days

W 1.4 W1.4
vanized



SCALE: AS SHOWN

P = Planter/Turf Area

PLANT LIST

Trees

Symbol	Qty	CommonName	LatinName	Size	Additional Spec	Native	Dro. Tol. (LMH)	Space
COLb12	4	Satinleaf	Chrysophyllum oliviforme	B&B; 12x4'; 2 1/2" Cal.; 5' C.S.T.		N	H	A.S.
CSEb12	4	Orange Geiger Tree	Cordia sebestena	B&B; 12x5'; 2 1/2" Cal.; 4' C.T.		N	H	A.S.
LJAb08	5	Japanese Privet	Ligustrum japonicum	B&B; 8x6'; 1 3/4" Cal.; 3' C.M.T.	3-4 Major Trunks; Matched		H	A.S.
TC-65	1	Silver Trumpet/Yellow Flower	Tabebuia caraiba	65-Gal.; 14'x7'; 3" Cal.; 6' C.T.			M	A.S.

Shrubs

Symbol	Qty	CommonName	LatinName	Size	Additional Spec	Native	Dro. Tol. (LMH)	Space
ASM	66	Meyers Foxtail Fern	Asparagus densiflorus 'Meyers'	3-Gal.; 18"x18"; Full			H	18" O.C.
CAU-15	6	Queen Emma Crinum Lily	Crinum augustum 'Queen Emma'	15-Gal.; 36" O.A.; Full			L	A.S.
DE	102	Autumn Fern	Dryopteris erythrosora	3-Gal.; 18"x18"; Full			H	24" O.C.
DT	42	Striped Flax Lily	Dianella tasmanica 'Variegata'	3-Gal.; 18"x18"; Full			H	24" O.C.
DV	85	White African Iris	Diets vegetata	1-Gal.; 14" O.A.; 3 P.P.P.; Full			M	18" O.C.
FM	102	Green Island Ficus	Ficus microcarpa 'Green Island'	3-Gal.; 12"x12"; 7 PPP; Full			H	24" O.C.
HP	59	Firebush	Hamelia patens	3-Gal.; 24"x18"		N	H	24" O.C.
IVSD	120	Stokes Dwarf Yaupon Holly	Ilex vomitoria 'Stokes Dwarf'	3-Gal.; 14"x14"; Full		N	H	18" O.C.
LMUEG	74	Emerald Goddess Border Grass	Liriope muscari 'Emerald Goddess'	1-Gal.; 9 P.P.P.; Full			H	18" O.C.
NCR-03	36	Giant Apostle Iris	Neomarica caerulea 'Regina'	3-Gal.; 4 P.P.P.; 24" O.A.; Full	Blue Flwr.		M	24" O.C.
PMDP03	47	Pringles Yew Podocarpus	Podocarpus macrophyllus 'Dwarf Pringles'	3-Gal.; 18"x18"			H	24" O.C.
TAM	21	Dwarf Minima Jasmine	Trachelospermum asiaticum 'Minima'	1-Gal.; 18" Spread; Full			M	12" O.C.
TV	107	Society Garlic	Tulbaghia violacea	1 Gal.; Full		N	H	12" O.C.

Turf and Mulch

SSF	2713	Floritam St. Augustine Sod	Stenotaphrum secundatum 'Floritam'	Solid Sod				S.F.
-----	------	----------------------------	------------------------------------	-----------	--	--	--	------

Plant List Notes

Container sizes, if shown above, are presented as a suggestion only and shall not be relied upon for the purposes of estimating, bidding or purchasing of labor and/or materials. The plant height, spread and caliper are the controlling specifications.

Quantities (Qty), if shown above, are presented as a courtesy and shall not be relied upon for the purposes of estimating, bidding or purchasing of labor and/or materials. Sod & Mulch quantities represent square feet.

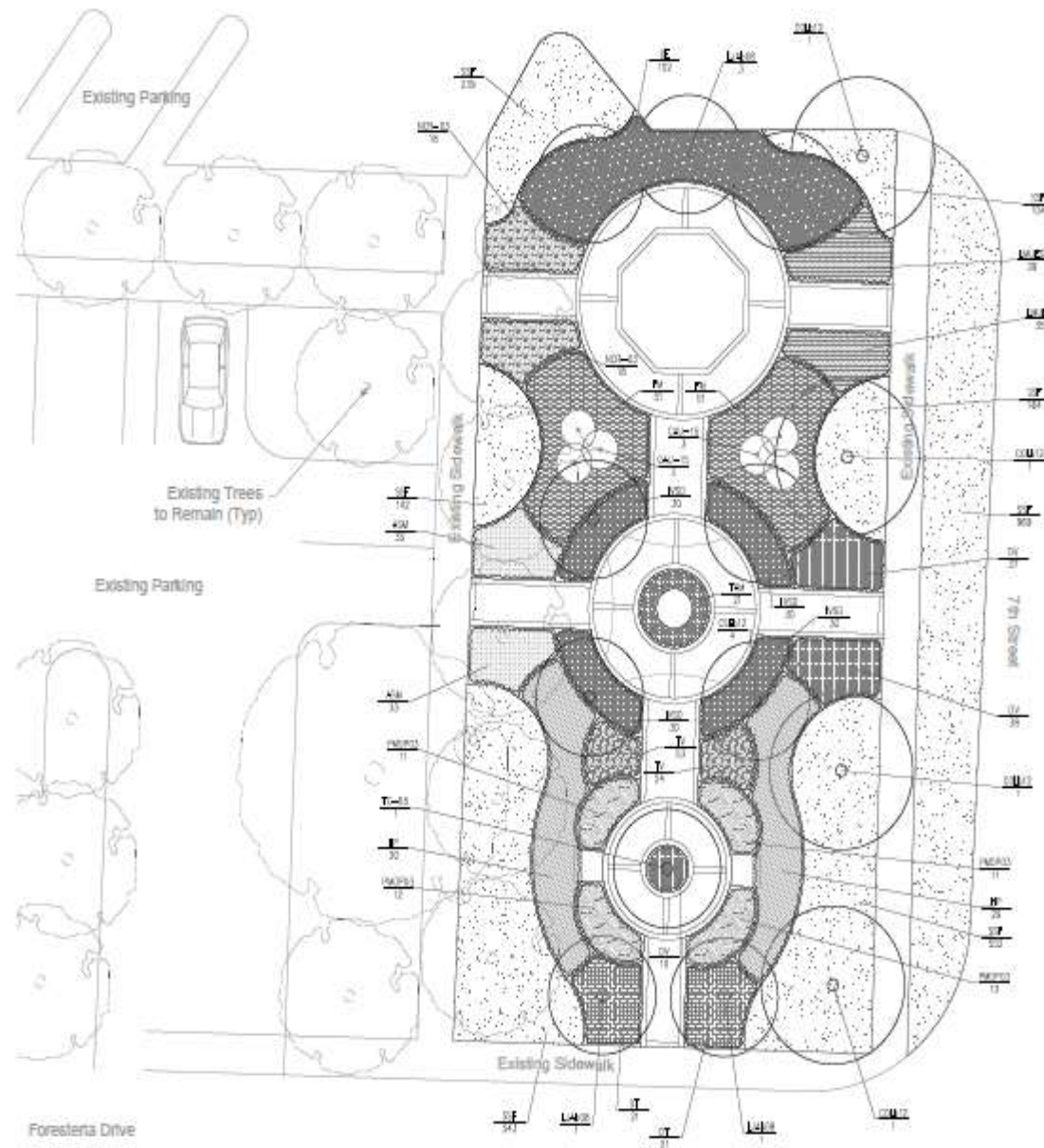
Any interested party shall derive actual quantities by performing a thorough and complete review of the Landscape Plan(s) with adequate consideration given to all information in the Plant List above excluding quantities.

In the event of a discrepancy between the plant list and plan count, the plans shall control.

Turf quantity is approximate. Turf required is to be based on field conditions at time of installation.

Native = (N); designation from the SFVMD Waterwise Guide, South Florida Edition, and UF Hort. Data Base

Drought tolerance (Dro. Tol.): L = Low, M = Moderate, H = High. Designation from the SFVMD Waterwise Guide, South Florida Edition, and UF Hort. Data Base



EXISTING
PARKING AND
LANDSCAPE

Foresteria Dr

Foresteria Dr

7TH ST.





Discussion/Questions