

Third Public Workshop on the Park Avenue Lane Reduction (Road Diet) Project



Public Works Department
Saturday, May 6, 2023



Please Scan to View this Presentation



Project Team



- **Members of the Town Commission**
- **John D'Agostino** – Town Manager
- **Roberto Travieso** – Public Works Director
- **Susan O'Rourke, P.E.** – Lead Engineer
- **Adam Swaney, P.E.** – Civil Engineer
- **Hays Henderson, PLA** – Landscape Architect
- **John Wille** – Capital Projects Manager



Public Workshop Agenda



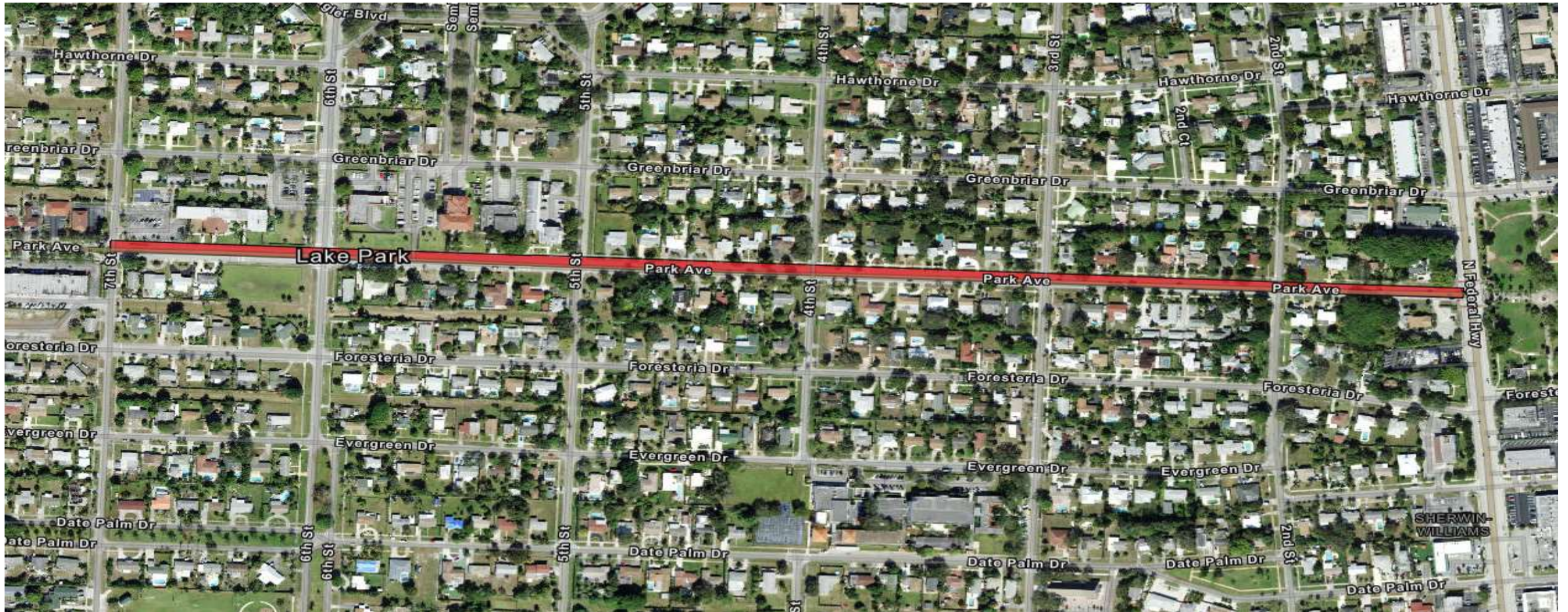
1. Introductions
2. Project Background
3. What is a Road Diet?
4. Public Input on Design Elements
5. Civil Design Plans
6. Public Input on Landscape
7. Landscape Design Plans
8. Project Illustrations
9. Implementation Timeline and Next Steps
10. Q&A
11. Table Discussions
12. Closing Comments



Project Background

SUSAN O'ROURKE, P.E.

Project Area



What is a Road Diet?



- Reduction in the travel way
- Enhancement of the Corridor
- Balance of Needs in the Corridor
 - Drainage
 - Beautification
 - Parking
 - Other travel modes



Should Park Avenue be Reduced?



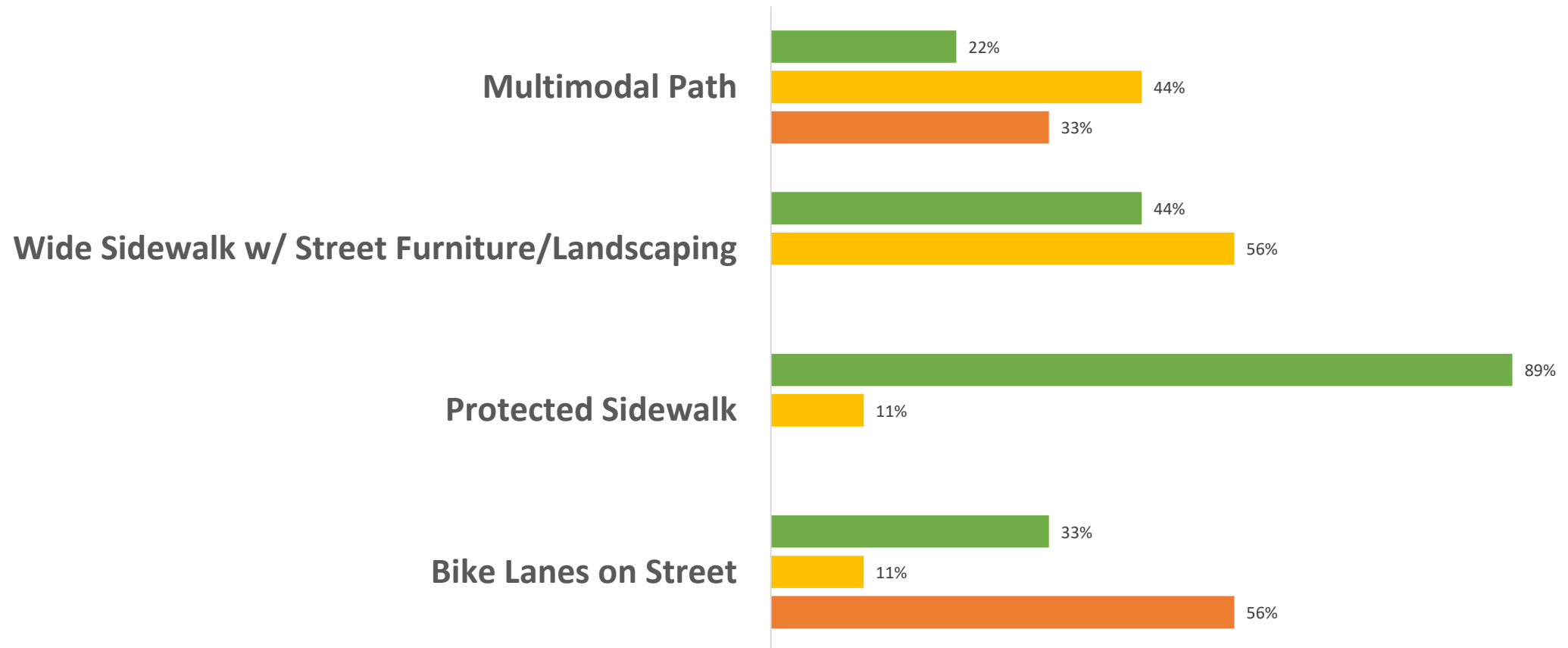
- Park Avenue demand is for two-lane now and in the future
- Speed Limit: 25 MPH, School Zone: 20 MPH
- History of excessive speeds and traffic accidents—requires mitigation



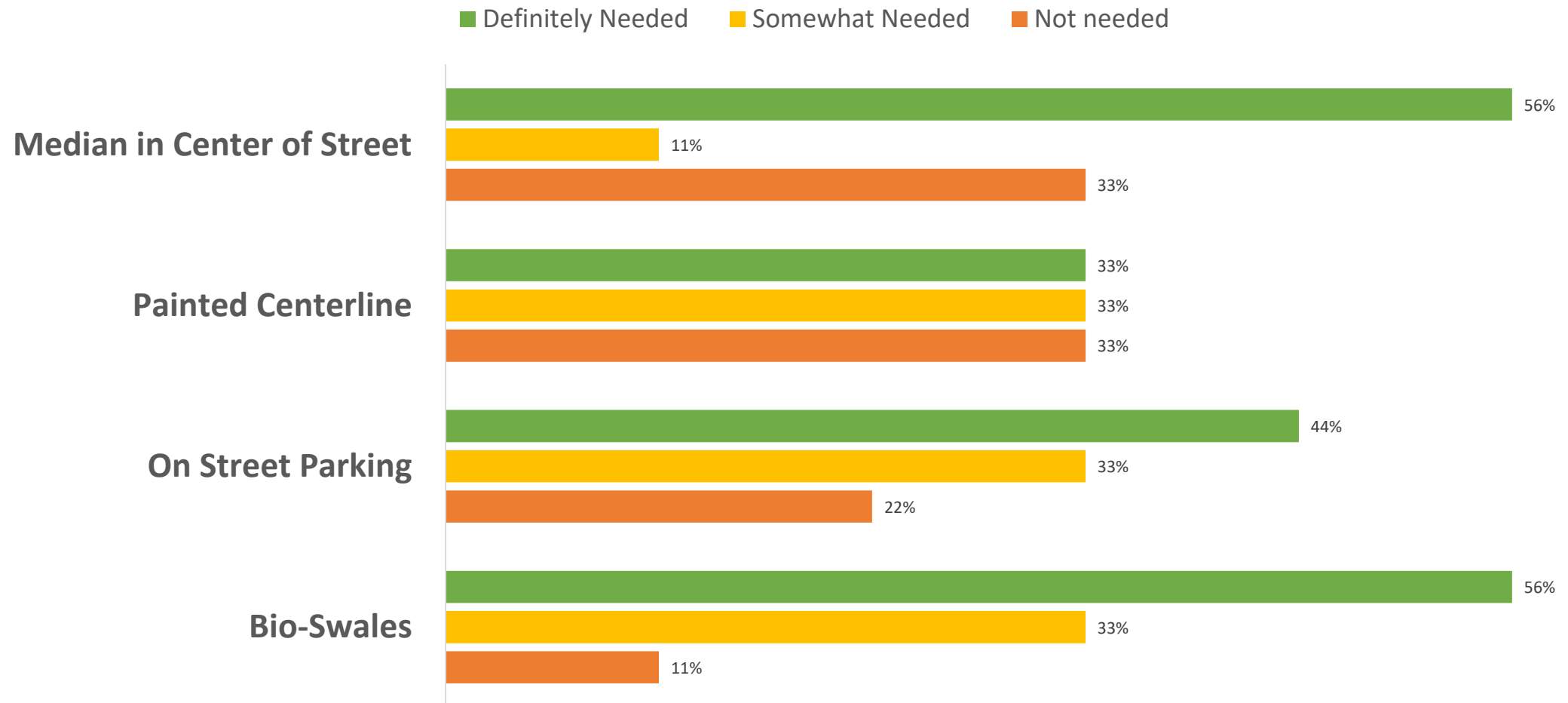
Previous Public Input



■ Definitely Needed ■ Somewhat Needed ■ Not needed



Previous Public Input



Previous Public Comments



- Consider a phased-in approach to complete project
- Include latest safety and lighting technology; paint new lines
- Do not change the existing lighting
- Add security cameras
- Bike lane should not be between travel lanes and street parking
- Improve school zone markings
- Prefer multi-use path than dedicated bike lanes
- Need protected crosswalks

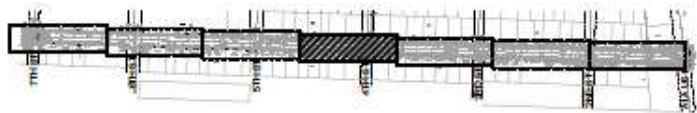




60% Design Plans (Typical Blocks)

SUSAN O'ROURKE, PE

ADAM SWANEY, PE

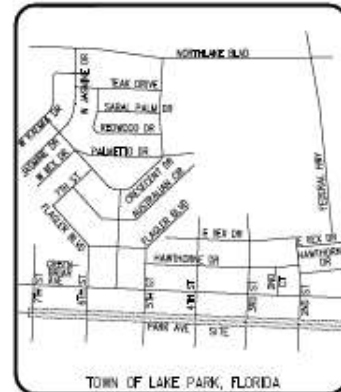


GENERAL NOTES:

- ELEVATIONS SHOWN HEREIN ARE BASED ON THE NORTH AMERICAN DATUM OF 1988 (NAVD 88) AND ARE REFERENCED TO BENCHMARK "Y 437", ELEVATION=5.45' (NAVD 88).
- TOPOGRAHIC SURVEY PERFORMED BY COUNTRY GROUP INC. IN AUGUST 4, 2022.
- ALL EXISTING DRIVE & EXISTING MATERIAL TO BE REMOVED FROM THE SITE AND LEGALLY DISPOSED OF.
- ALL CROSSOVERS SHALL MEET ADA, NO CROSS SLOPE SHALL EXCEED 2%.
- IF PROPOSED WORK DAMAGE PALM BEACH COUNTY ROADWAY, SEWER AND/OR DRAINAGE SYSTEMS, THEN THEY SHALL BE CONSTRUCTED, REPAIRED OR REPLACED TO ITS ORIGINAL OR BETTER CONDITION AT NO COST TO THE PALM BEACH COUNTY.
- PREEXISTING MARKINGS AND SIGNS IN PALM BEACH COUNTY RIGHT OF WAY, SHALL BE IN ACCORDANCE WITH THE MANUAL OF UNIFORM TRAFFIC CONTROL DEVICES FOR STREETS AND HIGHWAYS AND PALM BEACH COUNTY TYPICAL T-1-31.
- CONTRACTOR SHALL CONTACT THE THURTE OPERATIONS AT 561-133-3000 FORTY-EIGHT (48) HOURS PRIOR TO CONSTRUCTION IF WORK IS BEING DONE WITHIN 10 FEET OF ANY SIGNAL EQUIPMENT.
- ANY DAMAGE TO SIGNAL EQUIPMENT CAUSED BY THE CONSTRUCTION OF THIS PROJECT MUST BE REPAIRED OR REPLACED TO ORIGINAL OR BETTER CONDITION AT NO COST TO PALM BEACH COUNTY.

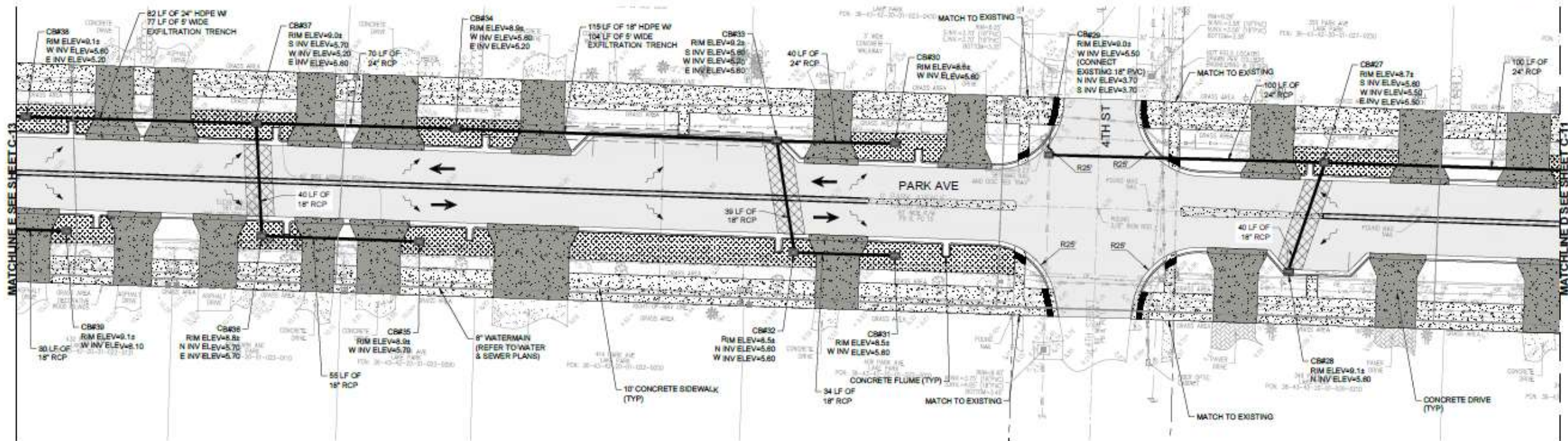
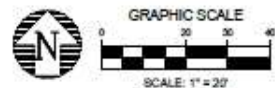
ENGINEERING LEGEND:

- PROPOSED 1" MILLING & RESURFACING
- PROPOSED CONCRETE DRIVEWAY
- PROPOSED CONCRETE SIDEWALK
- PROPOSED BIOSWALE
- PROPOSED FULL DEPTH ASPHALT REPLACEMENT
- TRAFFIC FLOW DIRECTION
- DRAINAGE INLET
- DRAINAGE FLOW DIRECTION



TOWN OF LAKE PARK, FLORIDA

LOCATION MAP
N.T.S.





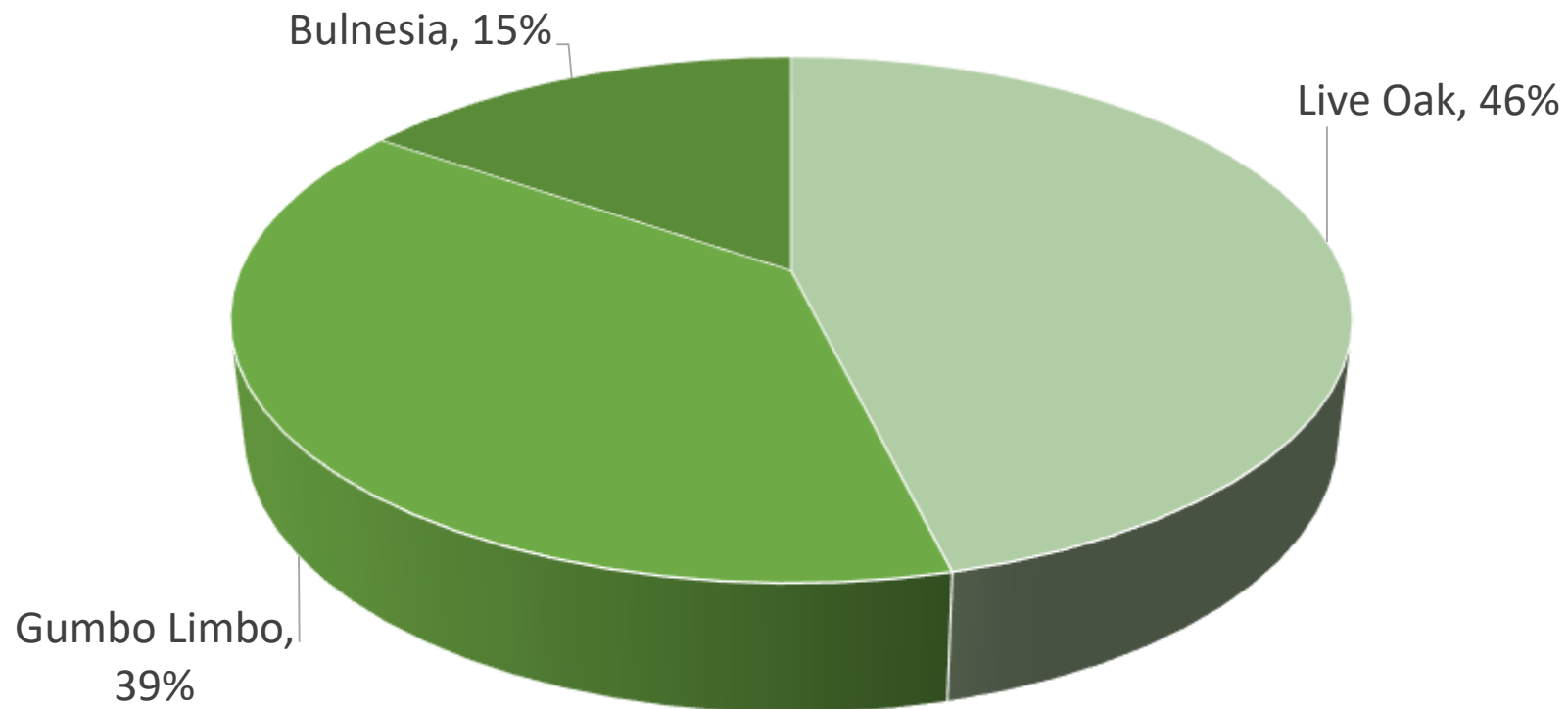
Previous Public Input – Landscape

HAYS HENDERSON, PLA

Previous Public Input – Landscape



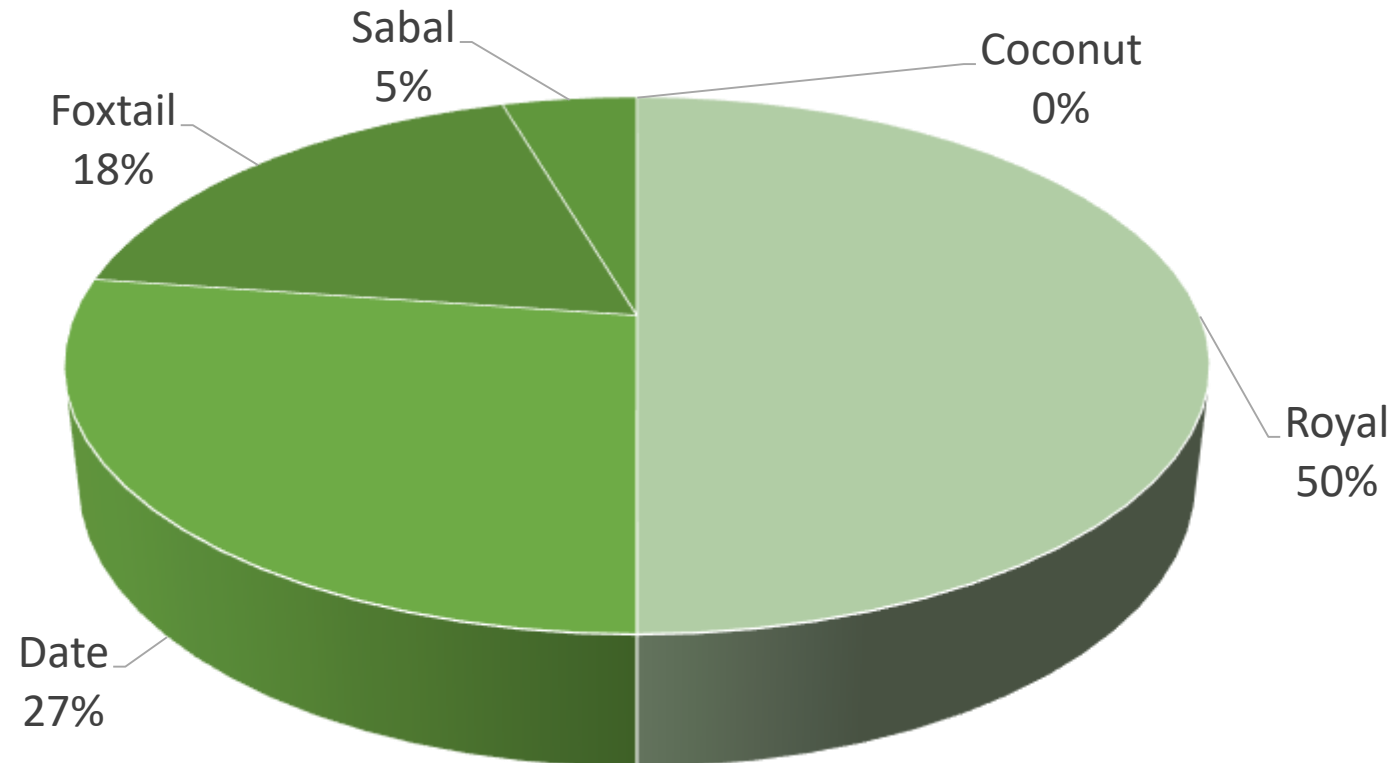
CANOPY TREE PREFERENCE



Previous Public Input – Landscape



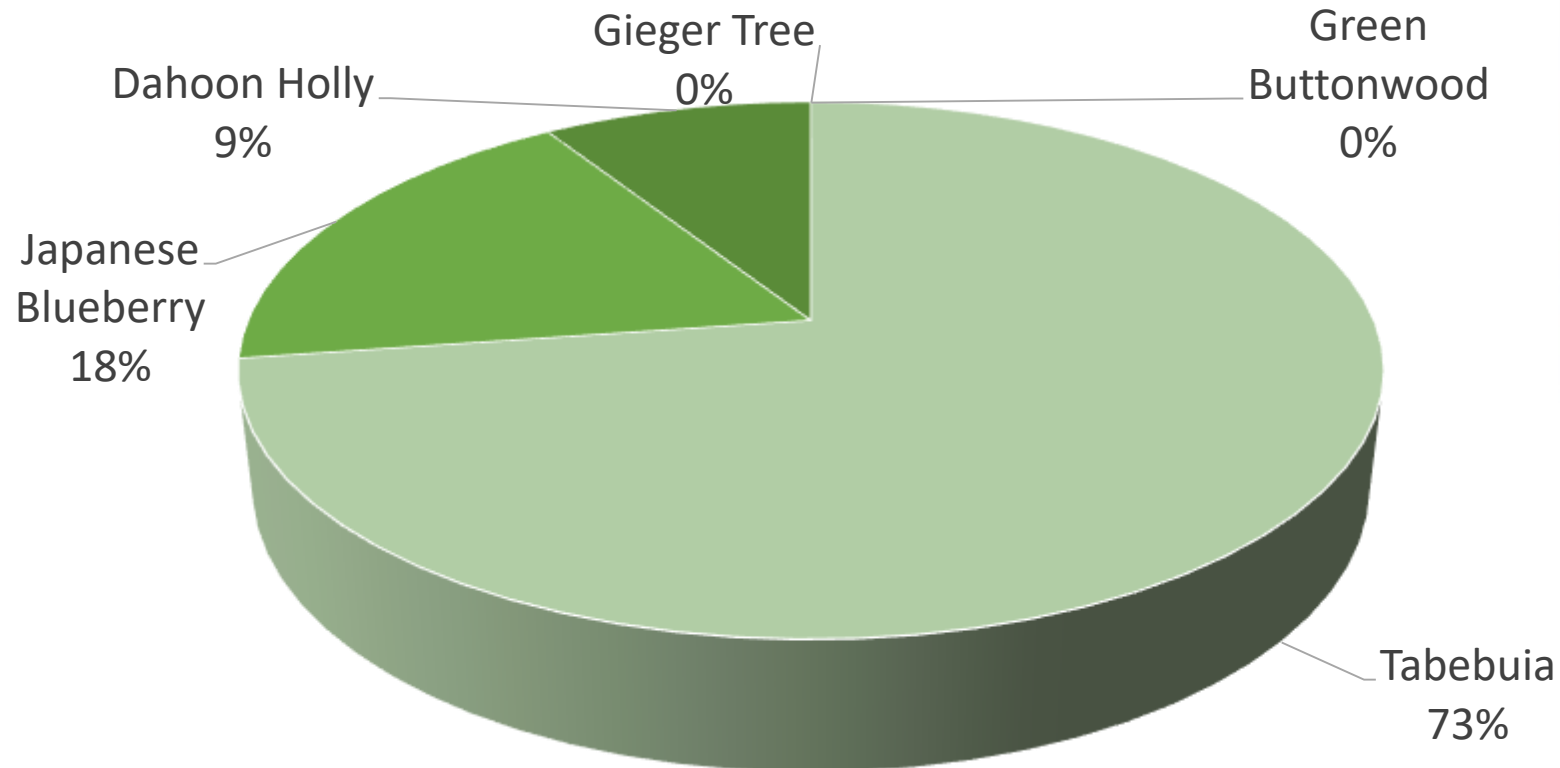
PALM TREE PREFERENCE



Previous Public Input – Landscape



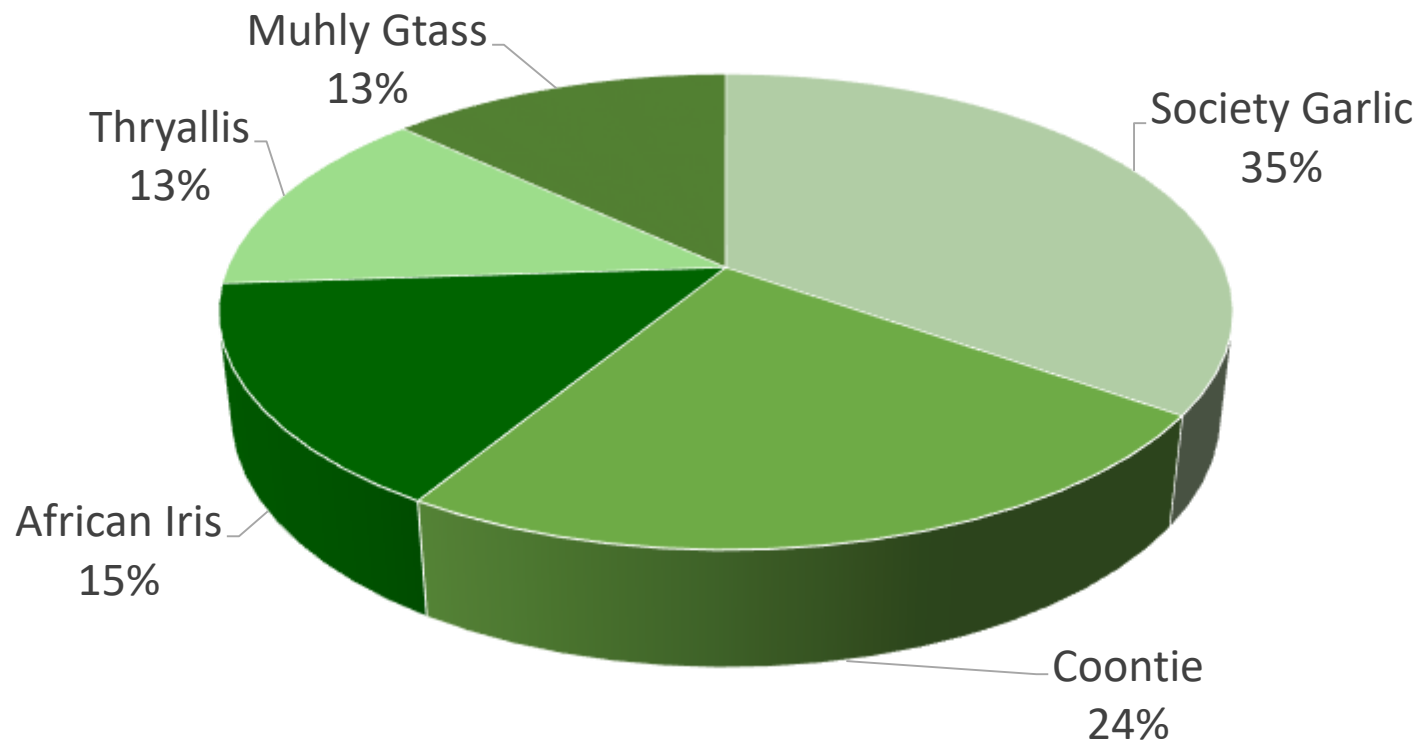
SMALL TREE PREFERENCE



Previous Public Input – Landscape



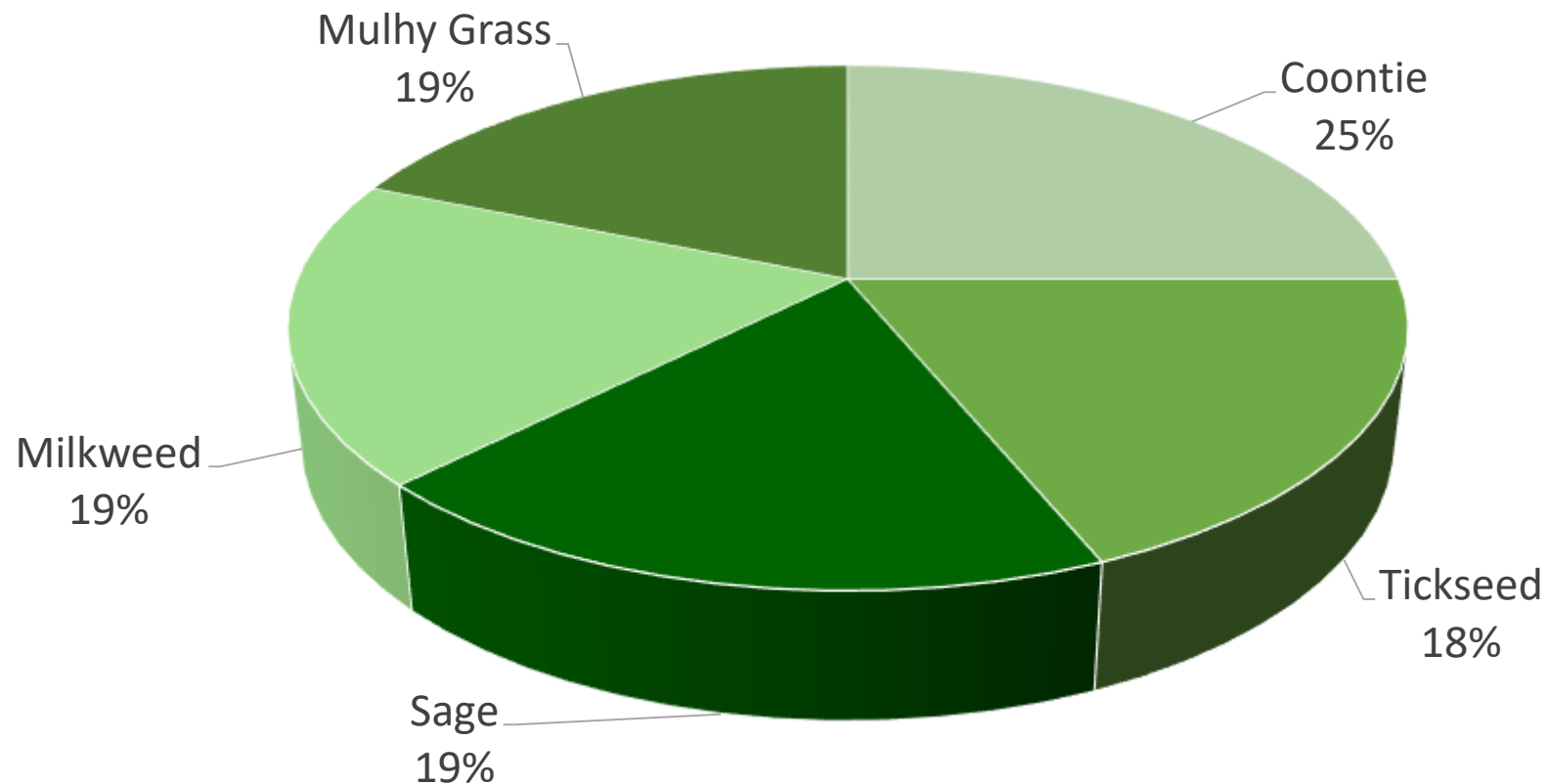
SHRUBS & GROUND COVER PREFERENCE



Previous Public Input – Landscape



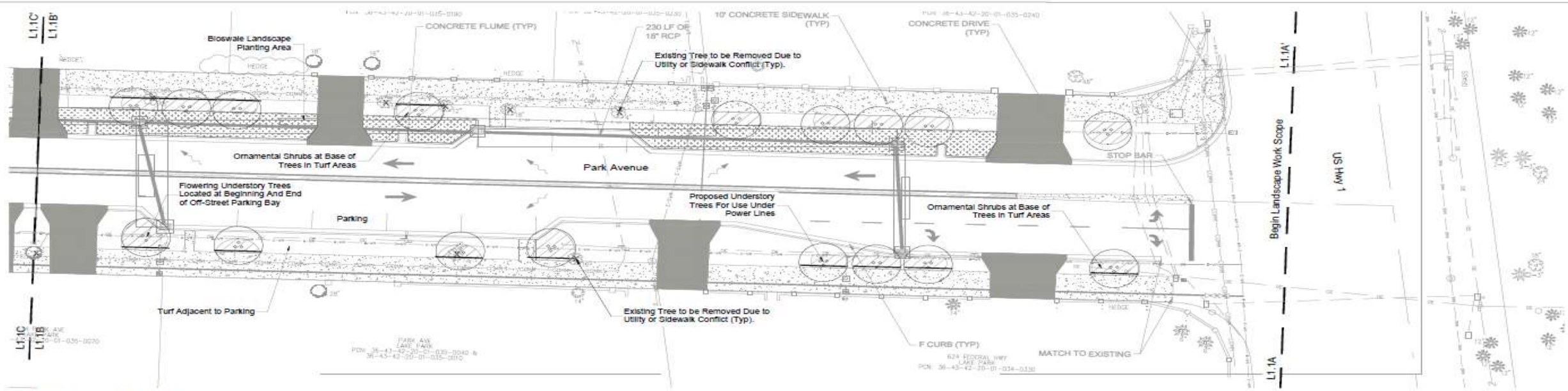
BIOSWALE PLANTING PREFERENCE



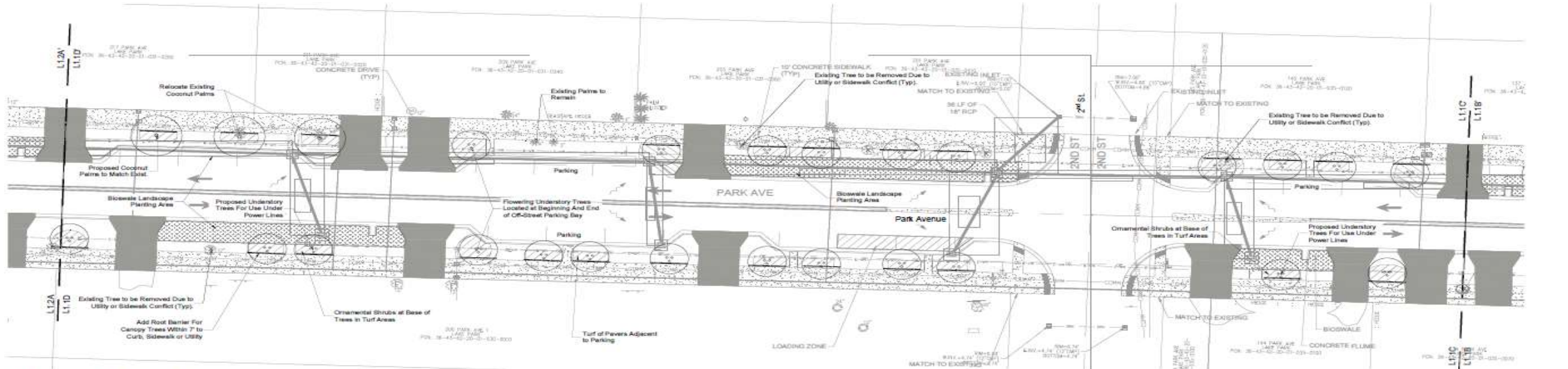


Landscape Design Plans (Typical Blocks)

HAYS HENDERSON, PLA

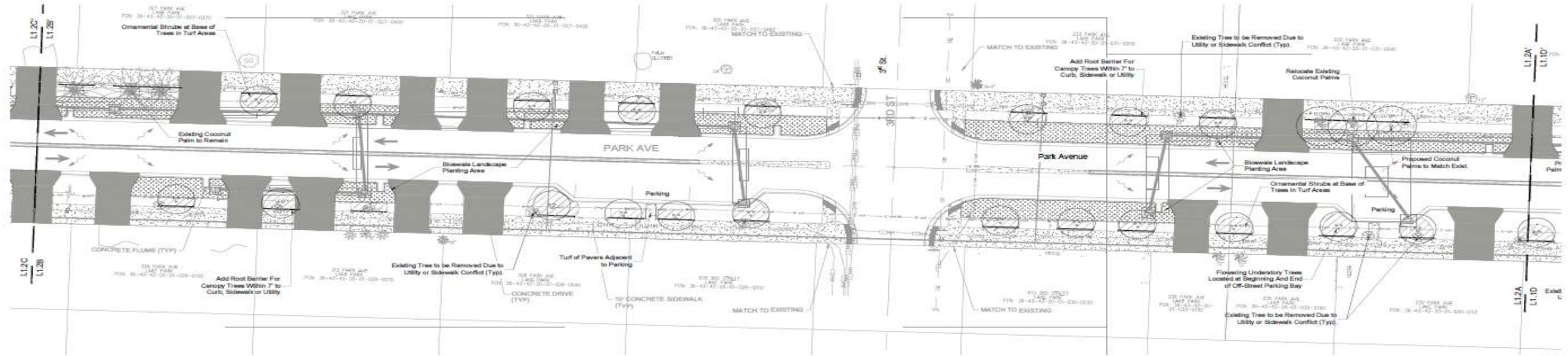


LANDSCAPE SECTION AA'-BB'

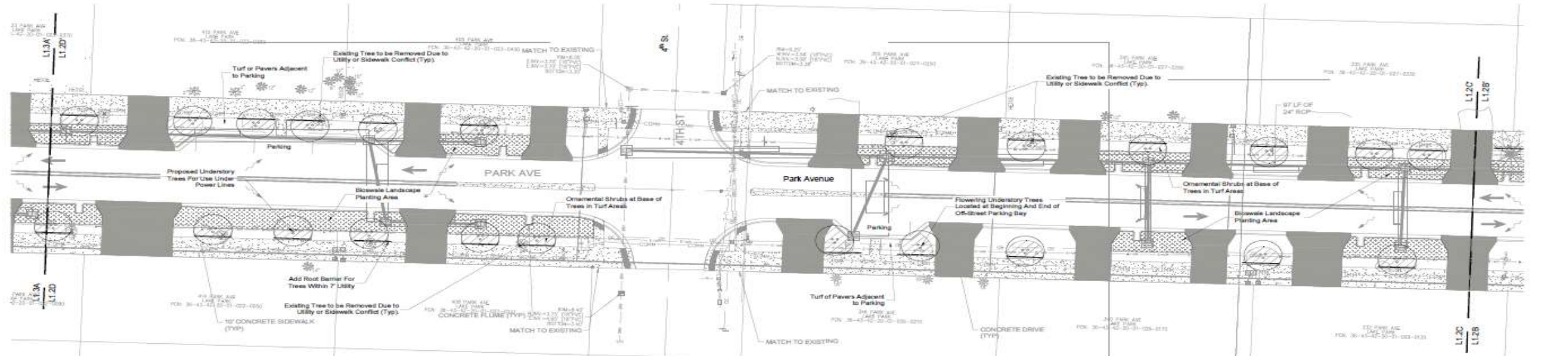


LANDSCAPE SECTION CC'-DD'

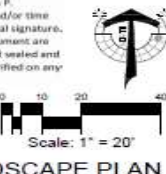




LANDSCAPE SECTION AA'-BB'



LANDSCAPE SECTION CC'-DD'





Project Design Illustrations

HAYS HENDERSON, PLA

Park Avenue, between 4th Street and 5th Street (East View)



Park Avenue, between 6th Street and 7th Street (East View)





Implementation Timeline & Next Steps

JOHN WILLE, CAPITAL PROJECTS MANAGER

Implementation Timeline & Next Steps



Project Team will:

- Analyze public input for potential inclusion in project's design
- Develop 90% design plans
- Continue to investigate and leverage grant funding opportunities to support project implementation
- Final Workshop proposed for Spring 2024
- Possible implementation during Calendar Years 2024/2025



Questions & Comments



Table Discussion

DURATION: UP TO 1 HOUR

Table Discussion



1. Discuss available maps/table arrangements
2. Property Owners/Tenants are encouraged to locate their property on the maps and discuss concerns with members of the design team
 - Table 1: Full complete civil plan (driveways, on-street parking, etc.)
 - Table 2: Full Landscape Plan



Connect with Us!



■ New Service Request Portal

- Request Service
- Report Issues



(561) 657-3918



publicworks@lakeparkflorida.gov



SCAN AND
BOOKMARK
ME!

