

# Third Public Workshop on the Park Avenue Lane Reduction (Road Diet) Project



Public Works Department

Saturday, May 6, 2023



# Project Team



- **Members of the Town Commission**
- **John D'Agostino** – Town Manager
- **Roberto Travieso** – Public Works Director
- **Susan O'Rourke, P.E.** – Lead Engineer
- **Adam Swaney, P.E.** – Civil Engineer
- **Hays Henderson, PLA** – Landscape Architect
- **John Wille** – Capital Projects Manager



# Public Workshop Agenda



1. Introductions
2. Project Background
3. What is a Road Diet?
4. Public Input on Design Elements
5. Civil Design Plans
6. Public Input on Landscape
7. Landscape Design Plans
8. Project Illustrations
9. Implementation Timeline and Next Steps
10. Q&A
11. Table Discussions
12. Closing Comments

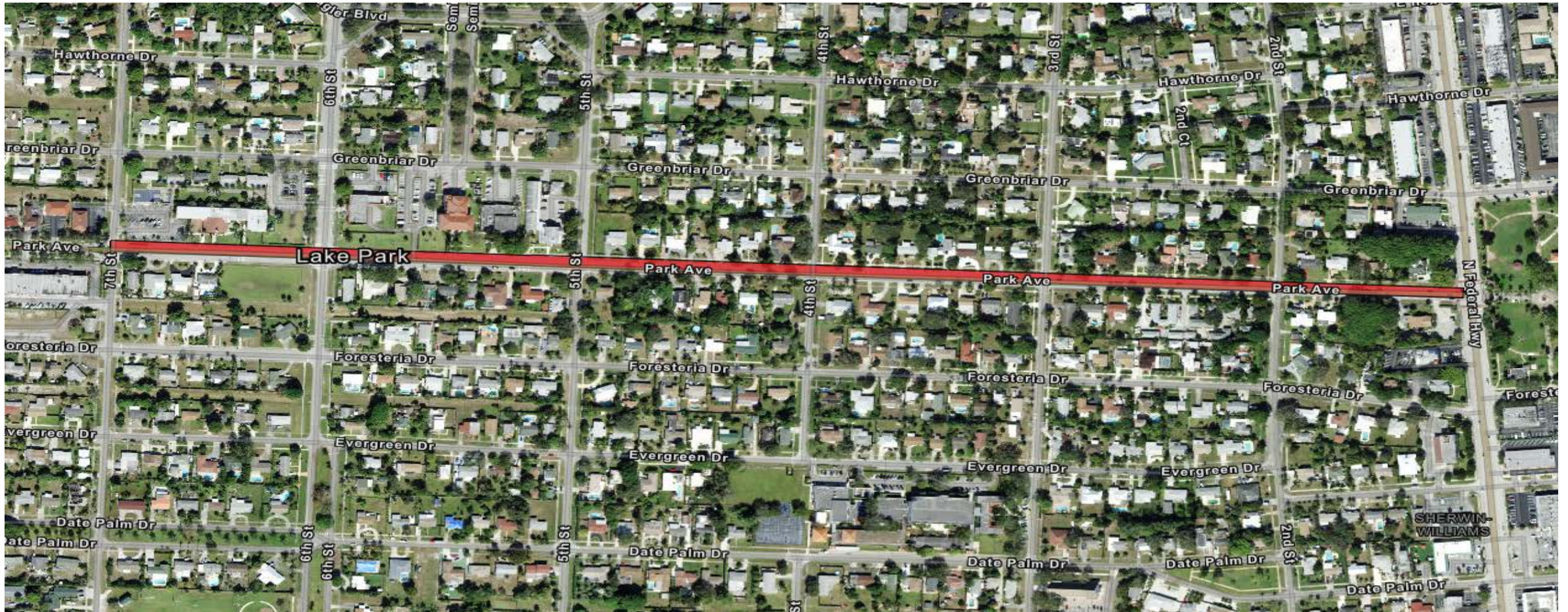




# Project Background

SUSAN O'ROURKE, P.E.

# Project Area



# What is a Road Diet?



- Reduction in the travel way
- Enhancement of the Corridor
- Balance of Needs in the Corridor
  - Drainage
  - Beautification
  - Parking
  - Other travel modes



# Should Park Avenue be Reduced?



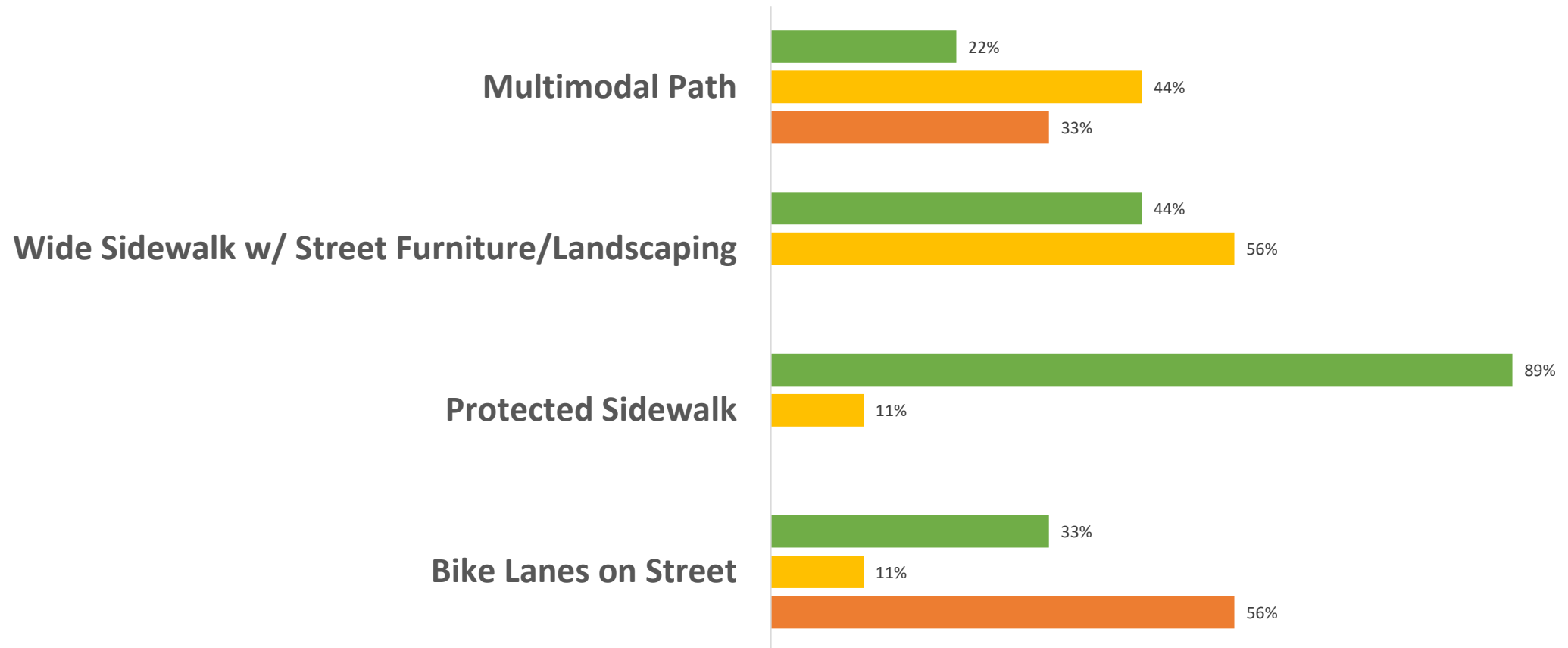
- Park Avenue demand is for two-lane now and in the future
- Speed Limit: 25 MPH, School Zone: 20 MPH
- History of excessive speeds and traffic accidents—requires mitigation



# Previous Public Input

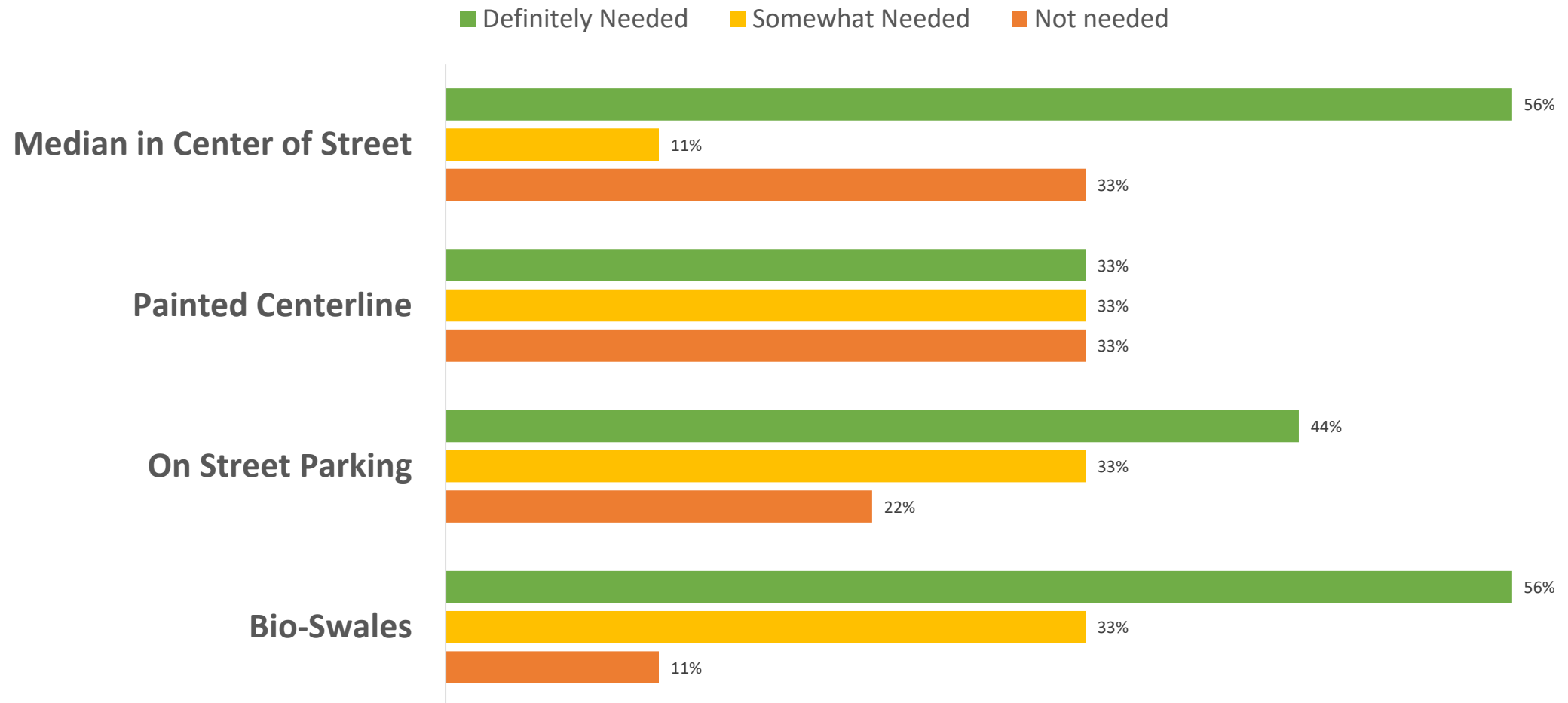


■ Definitely Needed   ■ Somewhat Needed   ■ Not needed





# Previous Public Input



# Previous Public Comments



- Consider a phased-in approach to complete project
- Include latest safety and lighting technology; paint new lines
- Do not change the existing lighting
- Add security cameras
- Bike lane should not be between travel lanes and street parking
- Improve school zone markings
- Prefer multi-use path than dedicated bike lanes
- Need protected crosswalks





# **60% Design Plans (Typical Blocks)**

SUSAN O'ROURKE, PE

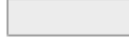

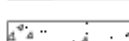
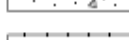
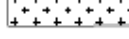



ADAM SWANEY, PE



**GENERAL NOTES:**

- ELEVATIONS SHOWN HEREON ARE BASED ON THE NORTH AMERICAN VERTICAL DATUM OF 1988 (NAVD 88) AND ARE REFERENCED TO BENCHMARK "Y 427", ELEVATION=4.45' (NAVD 88).
- TOPOGRAPHIC SURVEY PERFORMED BY ENVIDUITY GROUP INC. IN AUGUST 4, 2023.
- ALL EXISTING CURBS & EXISTING MATERIAL TO BE REMOVED FROM THE SITE AND LEGALLY DEPOSED OR RECYCLED.
- ALL CROSSSLOPES SHALL MEET ADA. NO CROSS SLOPES SHALL EXCEED 2%.
- IF PROPOSED WORK DAMAGE PALM BEACH COUNTY ROADWAY, SIDEWALK AND/OR DRAINAGE SYSTEMS, THEY SHALL BE CONSTRUCTED REPAIRED OR REPLACED TO ITS ORIGINAL OR BETTER CONDITION AT NO COST TO THE PALM BEACH COUNTY.
- PAVEMENT MARKINGS AND SIGNS IN PALM BEACH COUNTY NORTH OF WAY, SHALL BE IN ACCORDANCE WITH THE MANUAL OF UNIFORM TRAFFIC CONTROL DEVICES FOR STREETS AND HIGHWAYS AND PALM BEACH COUNTY TYPICAL T-1-21.
- CONTRACTOR SHALL CONTACT PSC TRAFFIC OPERATIONS AT 561-333-3800 FORTY-EIGHT (48) HOURS PRIOR TO CONSTRUCTION IF WORK IS BEING DONE WITHIN 10 FEET OF ANY SIGNAL EQUIPMENT.
- ANY DAMAGE TO SIGNAL EQUIPMENT CAUSED BY THE CONSTRUCTION OF THIS PROJECT MUST BE REPAIRED OR REPLACED TO ORIGINAL OR BETTER CONDITION AT NO COST TO PALM BEACH COUNTY.

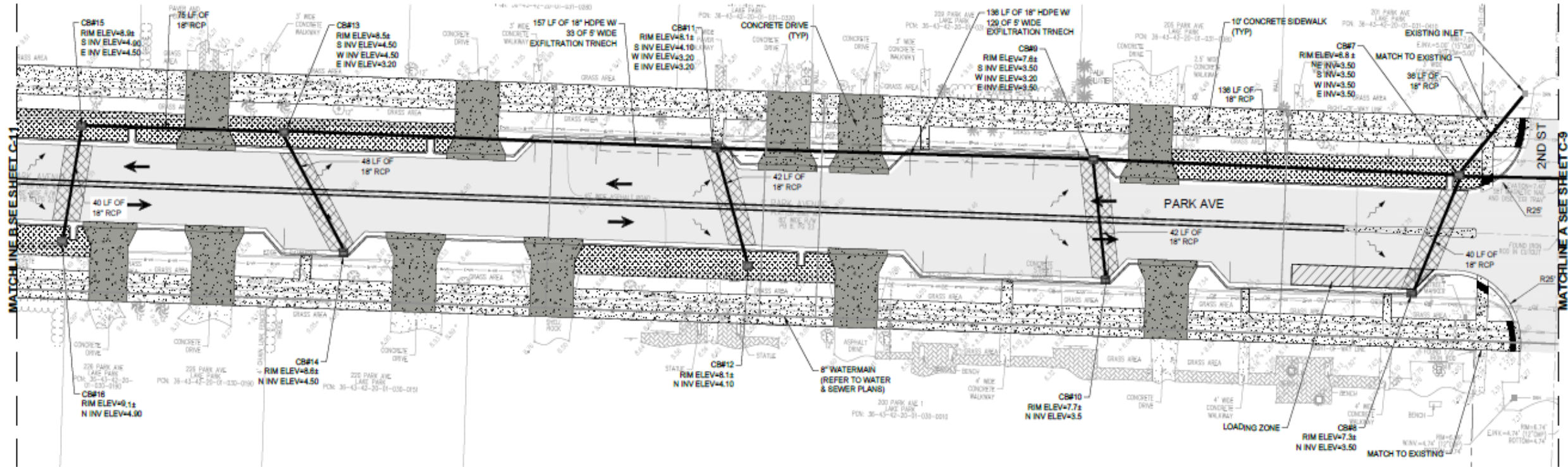
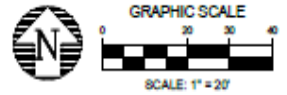
**ENGINEERING LEGEND:**

-  PROPOSED 1" MILLING & RESURFACING
-  PROPOSED CONCRETE DRIVEWAY
-  PROPOSED CONCRETE SIDEWALK
-  PROPOSED BIOSWALE
-  PROPOSED FULL DEPTH ASPHALT REPLACEMENT
-  TRAFFIC FLOW DIRECTION
-  DRAINAGE INLET
-  DRAINAGE FLOW DIRECTION



TOWN OF LAKE PARK, FLORIDA

**LOCATION MAP**  
N.T.S.







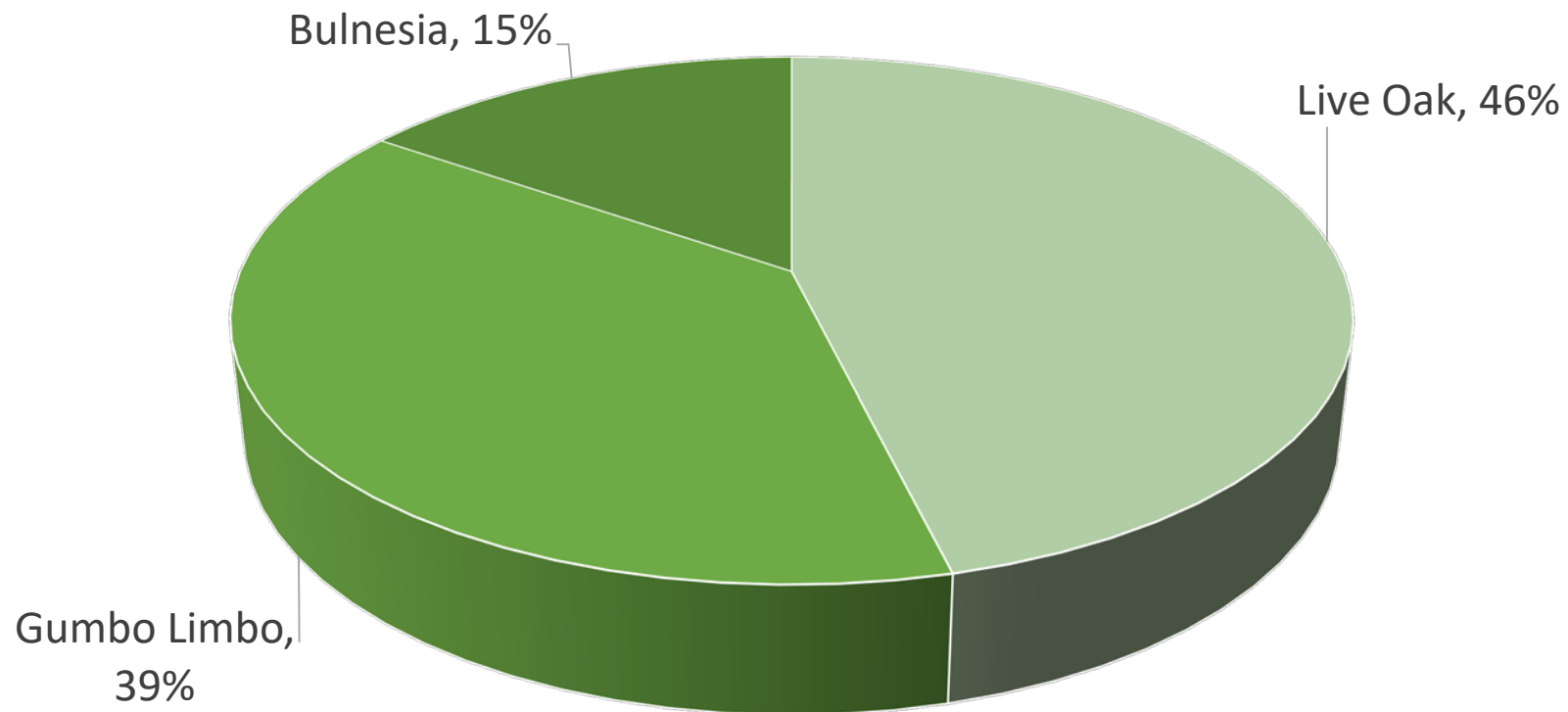
# Previous Public Input – Landscape

HAYS HENDERSON, PLA

# Previous Public Input – Landscape



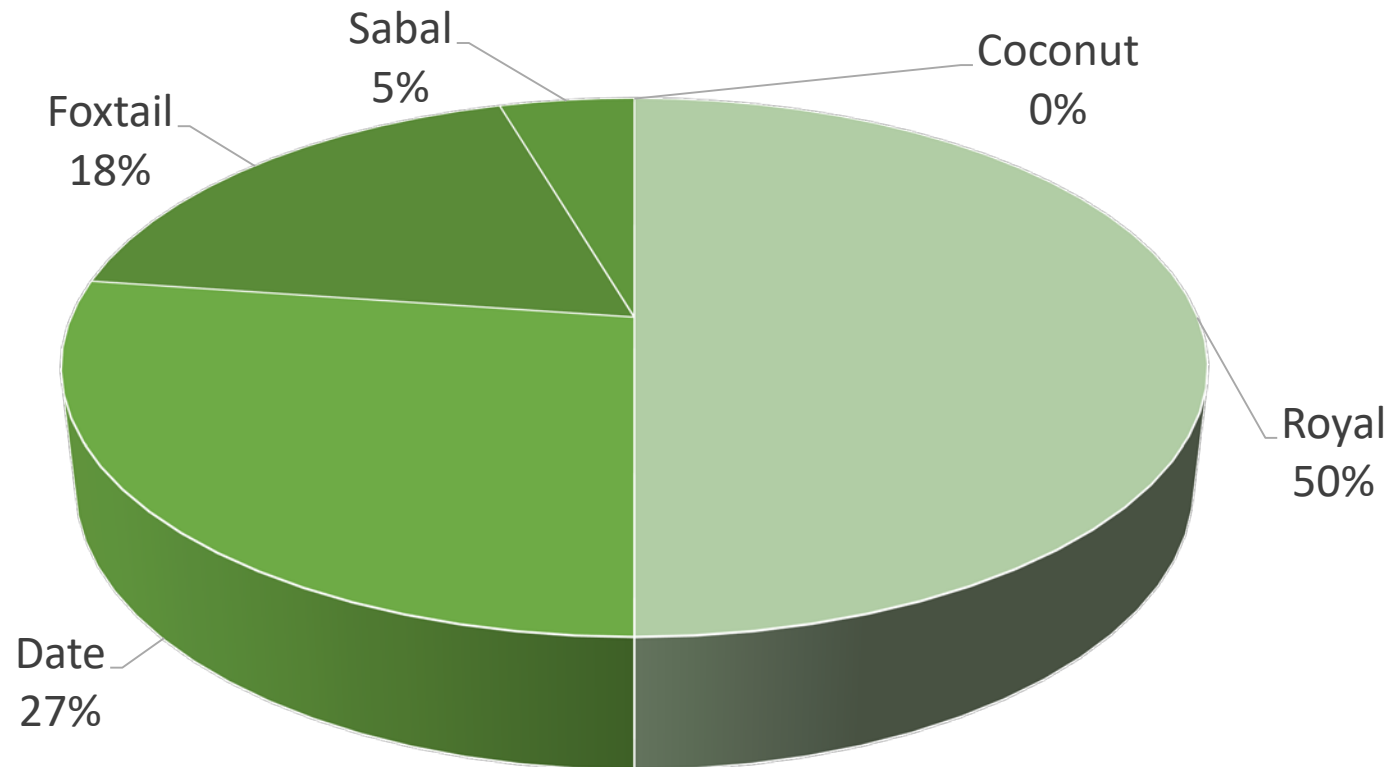
## CANOPY TREE PREFERENCE



# Previous Public Input – Landscape



## PALM TREE PREFERENCE

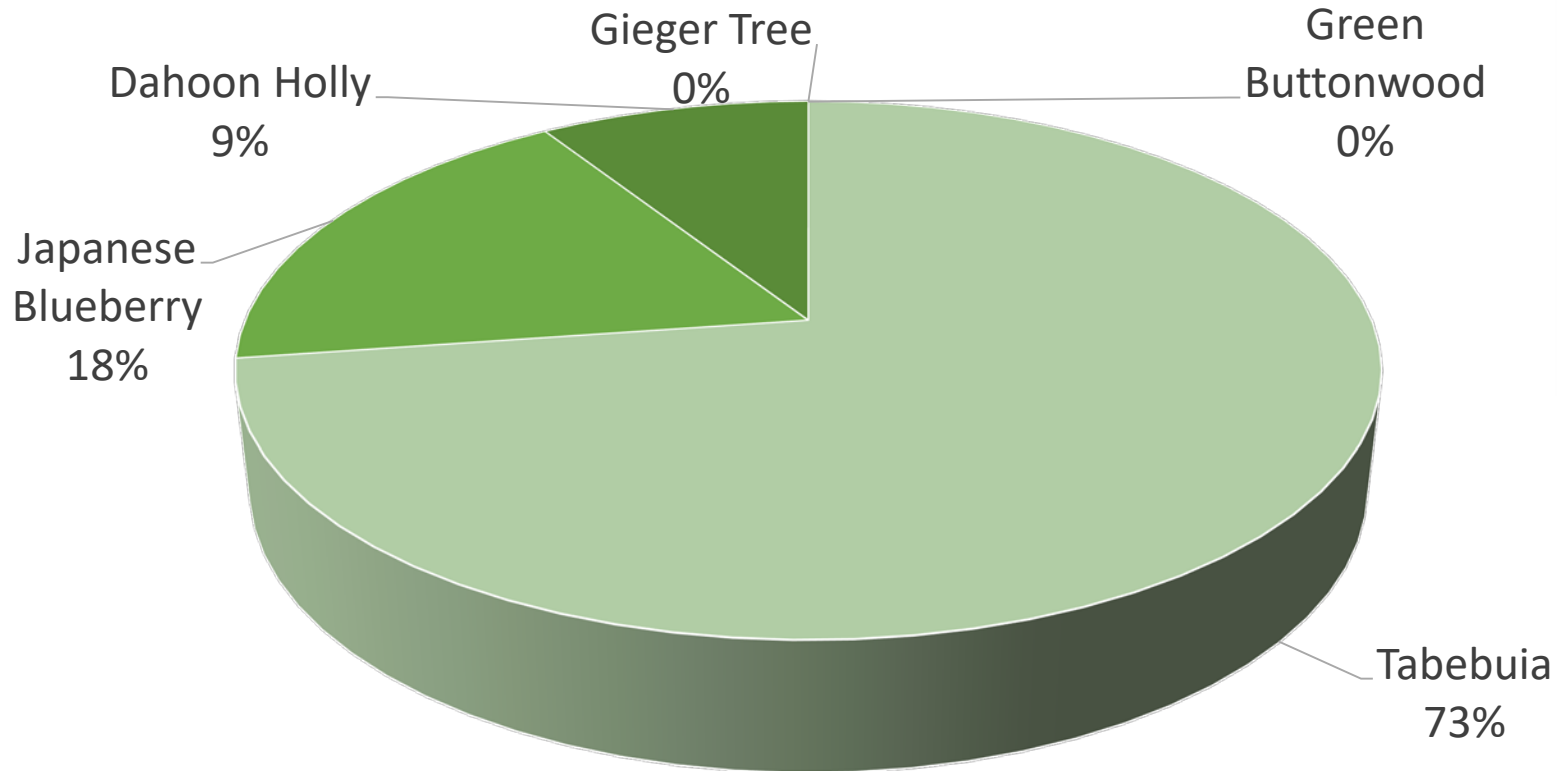




# Previous Public Input – Landscape



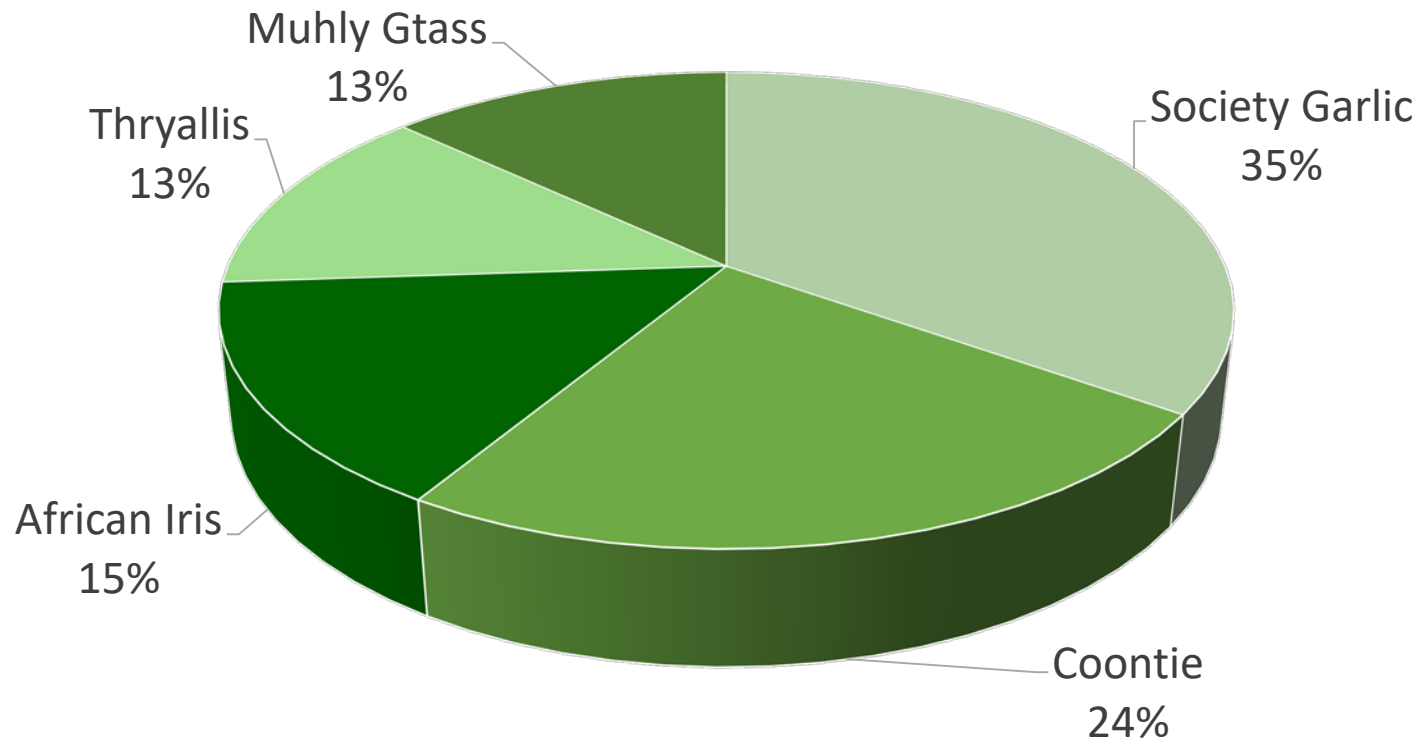
## SMALL TREE PREFERENCE



# Previous Public Input – Landscape



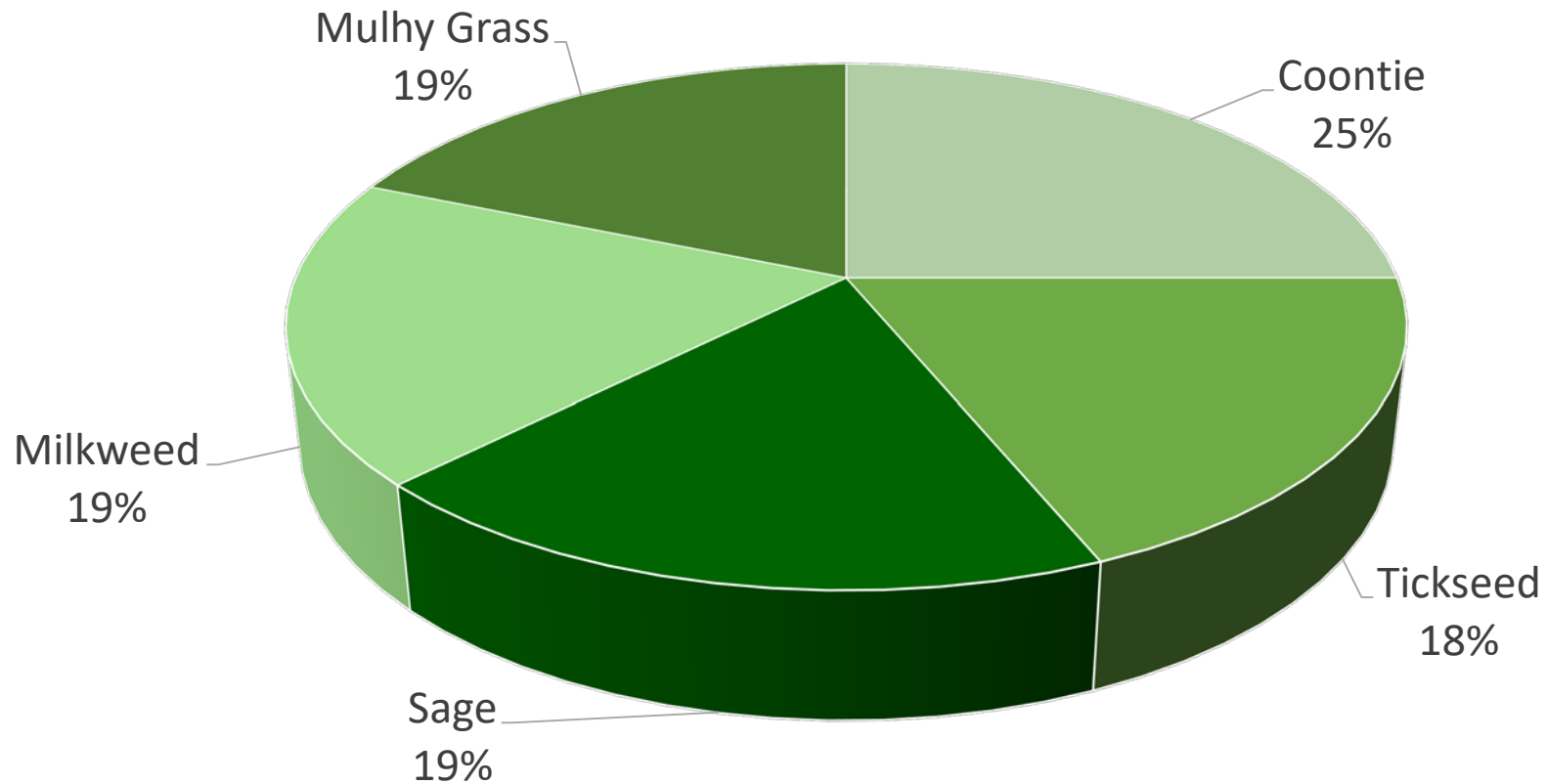
## SHRUBS & GROUND COVER PREFERENCE



# Previous Public Input – Landscape



## BIOSWALE PLANTING PREFERENCE

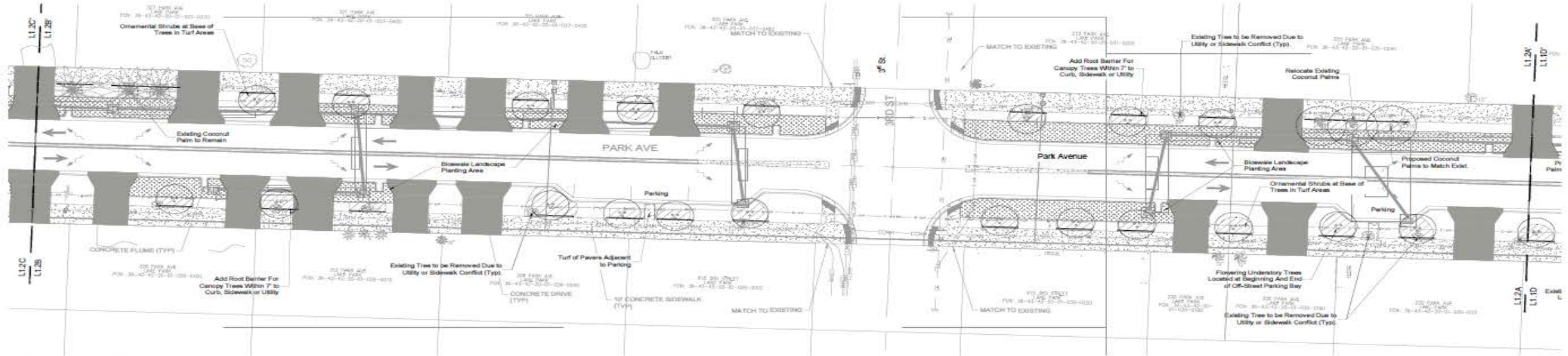




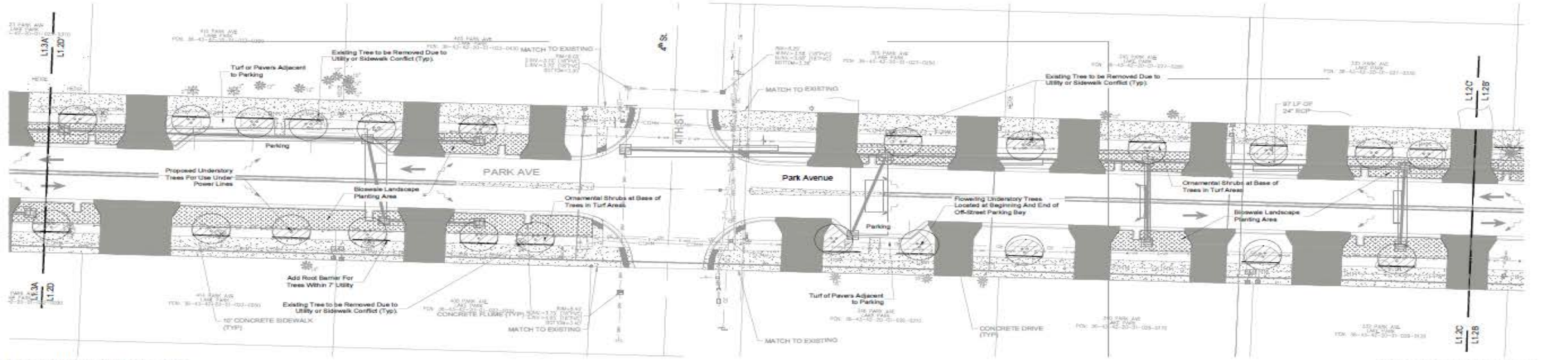
# Landscape Design Plans (Typical Blocks)

HAYS HENDERSON, PLA





LANDSCAPE SECTION AA-BB'



LANDSCAPE SECTION CC-DD'

**PRELIMINARY PLAN**

This item has been electronically signed and sealed by Hays P. Henderson on the date and/or time stamp shown using a digital signature. Printed copies of this document are not considered signed and sealed and the signature must be verified on any electronic copies.

Scale: 1" = 20'

**GRAPHIC LEGEND**

- Proposed Canopy Tree or Palm
- Proposed Understory Tree
- Proposed Understory Tree
- Proposed Ornamental Shrub Bed
- Proposed Bioswale Shrub Bed
- Proposed Rootbarrier



# Project Design Illustrations

HAYS HENDERSON, PLA

# Park Avenue, between 4<sup>th</sup> Street and 5<sup>th</sup> Street (East View)





# Park Avenue, between 6<sup>th</sup> Street and 7<sup>th</sup> Street (East View)





# Implementation Timeline & Next Steps

JOHN WILLE, CAPITAL PROJECTS MANAGER

# Implementation Timeline & Next Steps



## Project Team will:

- Analyze public input for potential inclusion in project's design
- Develop 90% design plans
- Continue to investigate and leverage grant funding opportunities to support project implementation
- Final Workshop proposed for Spring 2024
- Possible implementation during Calendar Years 2024/2025



# Questions & Comments



# Table Discussion

DURATION: UP TO 1 HOUR

# Table Discussion



1. Discuss available maps/table arrangements
2. Property Owners/Tenants are encouraged to locate their property on the maps and discuss concerns with members of the design team
  - Table 1: Full complete civil plan (driveways, on-street parking, etc.)
  - Table 2: Full Landscape Plan



# Connect with Us!



## ■ New Service Request Portal

- Request Service
- Report Issues



**(561) 657-3918**



**[publicworks@lakeparkflorida.gov](mailto:publicworks@lakeparkflorida.gov)**



SCAN AND  
BOOKMARK  
ME!

**TOWN OF LAKE PARK  
FLORIDA**

RESIDENTS   GOVERNMENT   BUSINESS   I WANT TO...   Search...

|   |  |              |  |
|---|--|--------------|--|
| Apply For A Job<br>Apply For A Permit<br>Make A Payment<br>Request Public Records | <b>Request Service</b><br>View Agendas | View Minutes | Provide Goods and Services to the Town<br>Current Purchasing Ordinance<br>Vendor Information Form<br>View Current Solicitations for Goods and Services |
|---|--|--------------|--|

**PUBLIC WORKS DEPARTMENT  
SERVICE REQUEST PORTAL**

Welcome to the Department of Public Works Resident/Business Service Request Portal.  
To route your concern to the correct division and expedite a response, please select a type of service request from the list below by clicking the corresponding image and providing the requested information.  
While your contact information is not required, withholding your contact information may slow or delay our response. Additionally, including your contact information enables you to receive progress updates on the status of your request(s). Note: Public Works is unable to perform work on privately owned property.  
Note: Once you have submitted a request for service or report an issue, you will automatically receive an email acknowledging your submission. To get the full picture, visit us at [www.lakeparkflorida.gov](http://www.lakeparkflorida.gov) or call us at (561) 657-3918. Thank you for your participation in our community.

**DRAINAGE**