

6/21/2024 8:32:44 AM c:\pw\work\exp-pw\pentley.com exp-pw-01\00142048\KEYSRD01.dgn

CONTRACT PLANS COMPONENTS

ROADWAY
SIGNING AND PAVEMENT MARKING
SIGNALIZATION
LIGHTING
STRUCTURES

INDEX OF ROADWAY PLANS

SHEET NO.	SHEET DESCRIPTION
1	KEY SHEET
2	SIGNATURE SHEET
3 - 8	TYPICAL SECTIONS
9 - 11	PROJECT CONTROL
12 - 14	GENERAL NOTES
15 - 44	ROADWAY PLAN
45 - 47	TRAFFIC MONITORING SITE
48	SPECIAL DETAILS
49 - 56	DRAINAGE STRUCTURES
57 - 64	TEMPORARY TRAFFIC CONTROL PLAN
65	LANDSCAPE DETAILS
66 - 69	TREE DISPOSITION CHART
70 - 97	TREE DISPOSITION PLAN
UTV-1*	VERIFIED UTILITY LOCATE
GR-1 - GR-9*	REPORT OF CORE BORINGS

* These sheets are included in the index of Roadway Plans only to indicate that they are part of the Roadway Plans. These sheets are contained in a separate digitally signed and sealed documents.

DEVELOPMENTAL STANDARD PLANS (DSPs):

D528-001 DIRECTIONAL INDICATOR

GOVERNING STANDARD PLANS:

Florida Department of Transportation, FY2024-25 Standard Plans for Road and Bridge Construction and applicable Interim Revisions (IRs).

Standard Plans for Road Construction and associated IRs are available at the following website: <http://www.fdot.gov/design/standardplans>

Standard Plans for Bridge Construction are included in the Structures Plans Component

GOVERNING STANDARD SPECIFICATIONS:

Florida Department of Transportation, FY 2024-25 Standard Specifications for Road and Bridge Construction at the following website: <http://www.fdot.gov/programmanagement/Implemented/SpecBooks>

STATE OF FLORIDA
DEPARTMENT OF TRANSPORTATION

ROADWAY PLANS

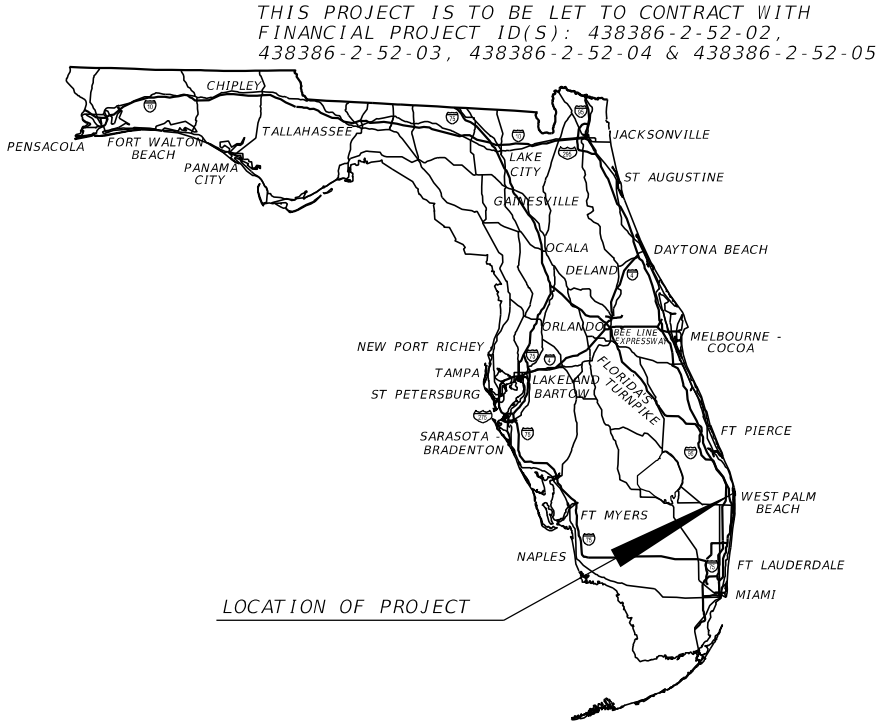
FINANCIAL PROJECT ID 438386-2-52-01

(FEDERAL FUNDS)

PALM BEACH COUNTY (93020500, 93020000, 93040000)

STATE ROAD NO. 5 (US-1)
ADD BIKE LANES AND RESURFACE
FROM 59TH STREET TO SR-850/NORTHLAKE BOULEVARD

PROJECT LOCATION URL:	https://tinyurl.com/bdeuudb2
PROJECT LIMITS:	93020500 BEGIN MP 0.001 – END MP 0.590 93020000 BEGIN MP 12.729 – END MP 14.558 93040000 BEGIN MP 0.000 – END MP 0.624
EXCEPTIONS:	NONE
BRIDGE LIMITS:	93020500 BR# 930470 MP 0.143 – END MP 0.503
RAILROAD CROSSING:	93020500 PORT OF PALM BEACH TRACKS MP 0.277



ROADWAY PLANS
ENGINEER OF RECORD:

JOSE LUIS SANTIAGO, P.E.
P.E. LICENSE NUMBER 60248
EXP U.S. SERVICES INC.
201 ALHAMBRA CIRCLE SUITE 800
CORAL GABLES, FL 33134
(786) 801 6360
CONTRACT NO.: CA729
VENDOR NO.: F460523964-001

FDOT PROJECT MANAGER:

DAMARIS WILLIAMS, P.E.

CONSTRUCTION CONTRACT NO.	FISCAL YEAR	SHEET NO.
T4697	25	1

THE OFFICIAL RECORD OF THIS SHEET IS THE ELECTRONIC FILE DIGITALLY SIGNED AND SEALED UNDER RULE 61G15-23.004, F.A.C.

6/20/2024 12:35:03 PM S:\DESIGN\FDOT\TAL-00258578-A0\ROADWAY\GNTRD01.DGN

GENERAL NOTES

1. ALL SURVEY INFORMATION WAS OBTAINED FROM A LICENSED FLORIDA PROFESSIONAL SURVEYOR AND MAPPER AND UTILIZED AS SUPPORTING DATA IN THE PRODUCTION OF DESIGN PLANS AND FOR CONSTRUCTION ON SUBJECT PROJECT. THE PROFESSIONAL SURVEYOR AND MAPPER OF RECORD IS:

MANUEL G. VERA, P.S.M.

P.S.M. NO: 5291

M.G. VERA & ASSOCIATES, INC.

13960 SW 47TH STREET

MIAMI, FL 33175-3616

CERTIFICATE OF AUTHORIZATION: LB2439
2. THE LOCATION(S) OF THE UTILITIES SHOWN IN THE PLANS (INCLUDING THOSE DESIGNATED Vv, Vh AND Vvh) ARE BASED ON LIMITED INVESTIGATION TECHNIQUES AND SHOULD BE CONSIDERED APPROXIMATE ONLY. THE VERIFIED LOCATIONS/ELEVATIONS APPLY ONLY AT THE POINTS SHOWN. INTERPOLATIONS BETWEEN THESE POINTS HAVE NOT BEEN VERIFIED.
3. UTILITY/AGENCY OWNERS:

COMPANY	CONTACT	TELEPHONE NUMBERS
AT&T DISTRUBUTION	RAMNON GARCIA	561-236-6730
AVIATION COORDINATOR	LAURIE MCSERMOTT	954-777-4497
BREEZELINE	DANIEL ORTIZ	786-720-9869
CITY OF RIVIERA BEACH	JOHN ARMSTRONG	561-845-3457
CITY OF WEST PALM BEACH	LAURA LE	561-289-8414
CITY OF WEST PALM BEACH PUBLIC UTILITIES	LAURA LE	561-289-8414
COMCAST- PBG	STEVEN ROSA	561-436-9034
CROWN CASTLE NG	DANNY HASKETT	786-246-7827
FLORIDA PUBLIC UTILITES	IVAN GIBBS	561-723-3459
FPL- PALM BEACH	RONA SOLOMON	561-541-5376
FPL- MARTIN FUEL SUPPLY PIPELINES	RYAN BALRAM	561-400-1329
FPL- EAST FIBER	DANIEL PEREZ	305-302-9748
FPL- TRANSMISSION	MARTIN MIKHAIL	561-993-6825
FREIGHT COORDINATION	AUTUMN YOUNG	954-777-4279
HOTWIRE COMMUNICATIONS	WALTER DAVILA	954-248-7396
LUMEN	NETWORK RELATIONS	877-366-8344 X3
MCI- VERIZON	DONOVAN CARR	954-213-1959
PALM BEACH COUNTY	MELLISA ACKERT	561-684-4101
PALM BEACH INFORMATION SYSTEM SERVICES	FEDERICO DUBOIS	561-701-7056
PALM BEACH COUNTY SCHOOLS	MICHAEL OWENS	561-882-1938
PALM BEACH COUNTY TRAFFIC OPERATIONS	DANIEL RODRIGUEZ	561-681-4365
PALM BEACH TPA	VALERIE NEILSON	561-684-4170
PALM TRAN BUS SERVICE	ERIN GALLOWAY	561-841-4270
RAILROAD COORDINATOR	MAURICE BORROWS	954-777-4379
RAILROAD COORDINATOR	ALEXANDER BARR	954-777-4284
SEACOAST UTILITY AUTHORITY	SCOTT SERRA	561-627-2900 X1398
TMR-30 PL (FLORIDA)	RYAN BALRAM	561-400-1329
TOWN OF LAKE PARK	JAIME MORALES	561-881-3345 X648
WINDSTREAM COMMUNICATION	BILLY MCCAY	404-985-7121
4. THIS PROJECT IS LOCATED WITHIN 10 NAUTICAL MILES FROM THE AIRPORT.
5. THERE IS A POTENTIAL GROUNDWATER CONTAMINATION ADJACENT TO THE PROJECT CORRIDOR. POTENTIALLY CONTAMINATED AREAS MUST BE TREATED AS IDENTIFIED AREAS OF CONTAMINATION. IF DEWATERING METHODS ARE EMPLOYED, CONTAMINATION IMPACTS MAY OCCUR AT APPROXIMATELY STA 131+00 TO 132+00.
6. ALL STATIONS ARE BASED ON THE CL UNLESS OTHERWISE STATED.
7. APPLY APPROVED PRODUCTS LIST (APL) MATERIAL (PREDOMINANTLY HORIZONTAL SURFACE) FOR CONCRETE REPAIR SHOWN ON PLAN TO CORRECT ANY SLOPE BREAKS AT CONNECTION OF THE PROPOSED AND EXISTING SIDEWALK. RESULTANT SLOPES NOT TO EXCEED 2%. DO NOT REMOVE MORE THAN 1" OF EXISTING CONCRETE SIDEWALK.
8. INLET PROTECTION SYSTEM MUST BE PROVIDED AT ALL CURB INLETS.

REVISIONS				ENGINEER OF RECORD	STATE OF FLORIDA DEPARTMENT OF TRANSPORTATION			GENERAL NOTES	SHEET NO.
DATE	DESCRIPTION	DATE	DESCRIPTION		ROAD NO.	COUNTY	FINANCIAL PROJECT ID		
					SR 5	PALM BEACH	438386-2-52-01		12

THE OFFICIAL RECORD OF THIS SHEET IS THE ELECTRONIC FILE DIGITALLY SIGNED AND SEALED UNDER RULE 61G15-23.004, F.A.C.

6/17/2024 1:38:11 PM S:\DESIGN\FDOT\TAL-00258578-A0\ROADWAY\GNTRD01.DGN

9. CONTRACTOR TO COORDINATE WITH CITY OF RIVIERA BEACH FOR BENCHES AT 166+25 RT AND 167+40 RT FOR REMOVAL AND REPLACEMENT IN KIND AFTER CONSTRUCTION IS COMPLETED.
CITY ENGINEER: TERRENCE BAILEY CONTACT: 561-845-4080

UTILTY LEGEND

- A STORM SEWER MH TO BE ADJUSTED BY FDOT
- B CITY OF RIVIERA BEACH WATER VALVE TO BE ADJUSTED BY FDOT
- C CITY OF RIVIERA BEACH WATER MANHOLE TO BE ADJUSTED BY FDOT
- D CITY OF RIVIERA BEACH SANITARY SEWER MH TO BE ADJUSTED BY FDOT
- E CITY OF RIVIERA BEACH WATER METER TO BE ADJUSTED BY FDOT
- F CITY OF WEST PALM BEACH WATER VALVE TO BE ADJUSTED BY FDOT
- G FPL MH TO BE ADJUSTED BY FPL
- H AT&T MH TO BE ADJUSTED BY AT&T
- I CITY OF RIVIERA BEACH WATER METER TO BE RELOCATED BY FDOT
- J CITY OF RIVIERA BEACH WATER VALVE TO BE RELOCATED BY FDOT
- K STORM SEWER MH TO BE RELOCATED BY FDOT
- L TRAFFIC SIGNAL PULLBOX TO BE ADJUSTED BY FDOT

- M STREET LIGHTING PULLBOX TO BE ADJUSTED BY FDOT
- N CROWN CASTLE PULLBOX TO BE REMOVED BY CROWN CASTLE
- O CROWN CASTLE PULLBOX TO BE ADJUSTED BY CROWN CASTLE
- P ELECTRICAL PULLBOX TO BE ADJUSTED BY FDOT
- Q CITY OF WEST PALM BEACH FIRE HYDRANT TO BE RELOCATED BY FDOT
- R CITY OF WEST PALM BEACH WATER MH TO BE ADJUSTED BY FDOT
- T CITY OF WEST PALM BEACH SANITARY MH TO BE ADJUSTED BY FDOT
- U WATER VALVE TO BE ADJUSTED BY SEACOAST UTILITY AUTHORITY
- V WATER METER TO BE ADJUSTED BY SEACOAST UTILITY AUTHORITY
- Y CITY OF RIVIERA BEACH IRRIGATION LINE TO BE CAPPED BY FDOT
- Z CITY OF RIVIERA BEACH DIP TO BE RELOCATED BY FDOT
- AA IRRIGATION CONTROL VALVE TO BE RELOCATED BY FDOT

FPL TRANSMISSION NOTES:

- 1. MAINTAIN CLEARANCES AS REQUIRED BY OSHA, WHEN WORKING IN THE PROXIMITY OF FPL'S HIGH VOLTAGE TRANSMISSION CONDUCTORS & OWNER VOLTAGE DISTRIBUTION CONDUCTIONS.
- 2. MAINTAIN ACCESS TO ALL FPL FACILITIES AT ALL TIMES DURING CONSTRUCTION.
- 3. ALL EXISTING FACILITIES MUST REMAIN ENERGIZED DURING ROAD CONSTRUCTION.

RAILROAD NOTES:

- 1. PORT OF PALM BEACH- MAIN POINTS OF CONTACT

PORT RAIL PHONE (DISPATCH)- ON DUTY ENGINEER- 561-308-9525
ALAN FAWCETT- TRAIN MASTER- 561-346-9119
KEITH LEGGETT- ASSISTANT DIRECTOR OF OPERATIONS- 561-383-4190

- 2. CONTRACTOR MUST STOP WORK UNDERNEATH THE BRIDGE DURING ANY TRAIN MOVEMENTS WITHIN THE PORT OF PALM BEACH PROPERTY.
- 3. CONTRACTOR TO EXERCISE CAUTION AROUND EXISTING LIGHTS, CAMERAS AND CONDUITS OWNED BY THE PORT OF PALM BEACH.
- 4. CONTRACTOR MUST HAVE TWIC IDENTIFICATION TO BE PROVIDED BY THE DEPARTMENT OF HOMELAND SECURITY. IF THE TWIC IDENTIFICATION IS NOT OBTAINED, AN ESCORT WILL BE REQUIRED WITH A REQUIRED TARIFF.
- 5. CONTRACTOR IS LIMITED TO NIGHT WORK ONLY FROM 7:00 PM TO 5:00 AM, MONDAY THRU SUNDAY WITHIN THE PORT OF PALM BEACH PROPERTY.
- 6. CONTRACTOR IS DIRECTED TO COORDINATE DIRECTLY WITH TROPICAL SHIPPING FOR THE REMOVAL OF THEIR EQUIPMENT STORED UNDER THE BRIDGE IN CONFLICT WITH THE PROPOSED WORK PRIOR TO CONSTRUCTION.
TROPICAL SHIPPING- CLAUDE CLEVINGER- 561-215-9122 (EMAIL ADDRESS: CCLEVINGER@TROPICAL.COM)
- 7. THE PORT OF PALM BEACH MUST PROVIDE FLAGS AND SIGNAGE DURING CONSTRUCTION AND CONTROL ALL TRAIN MOVEMENTS WITHIN THE PORT OF PALM BEACH PROPERTY.

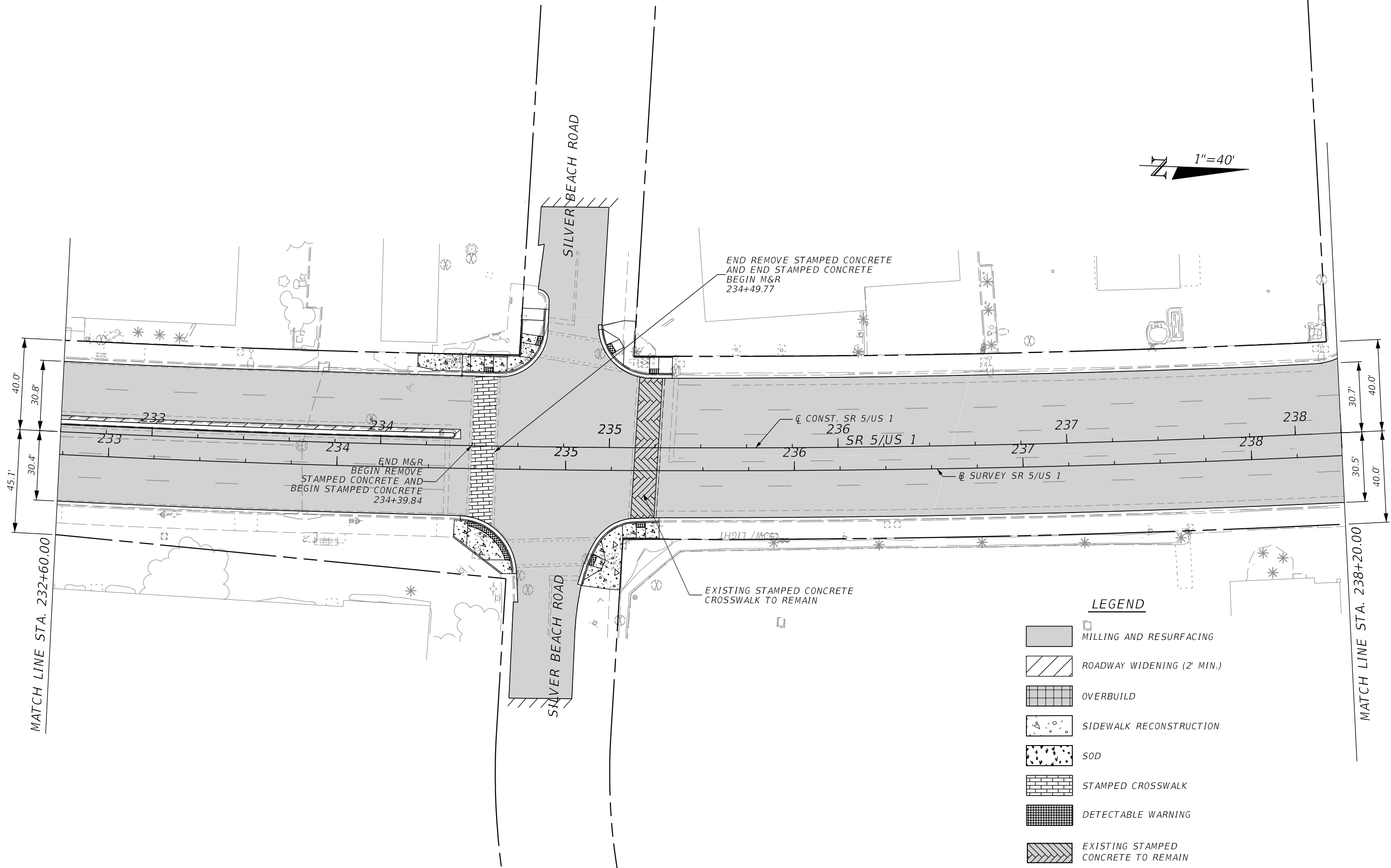
PAY ITEM NOTES:

PAY ITEM 0431-1530 PIPE LINER SLIPLINING 30 INCHES:
INCLUDES ANY FLOWABLE FILL AND PIPE CLEANING NEEDED AS INCIDENTAL TO THE WORK.

REVISIONS				ENGINEER OF RECORD	STATE OF FLORIDA DEPARTMENT OF TRANSPORTATION			GENERAL NOTES	SHEET NO.
DATE	DESCRIPTION	DATE	DESCRIPTION		ROAD NO.	COUNTY	FINANCIAL PROJECT ID		
					SR 5	PALM BEACH	438386-2-52-01		13

THE OFFICIAL RECORD OF THIS SHEET IS THE ELECTRONIC FILE DIGITALLY SIGNED AND SEALED UNDER RULE 61G15-23.004, F.A.C.

7/3/2024 4:18:53 PM
c:\pw\work\exp-pw\kentley.com exp-pw-01\0242385\PLANRD01.dgn



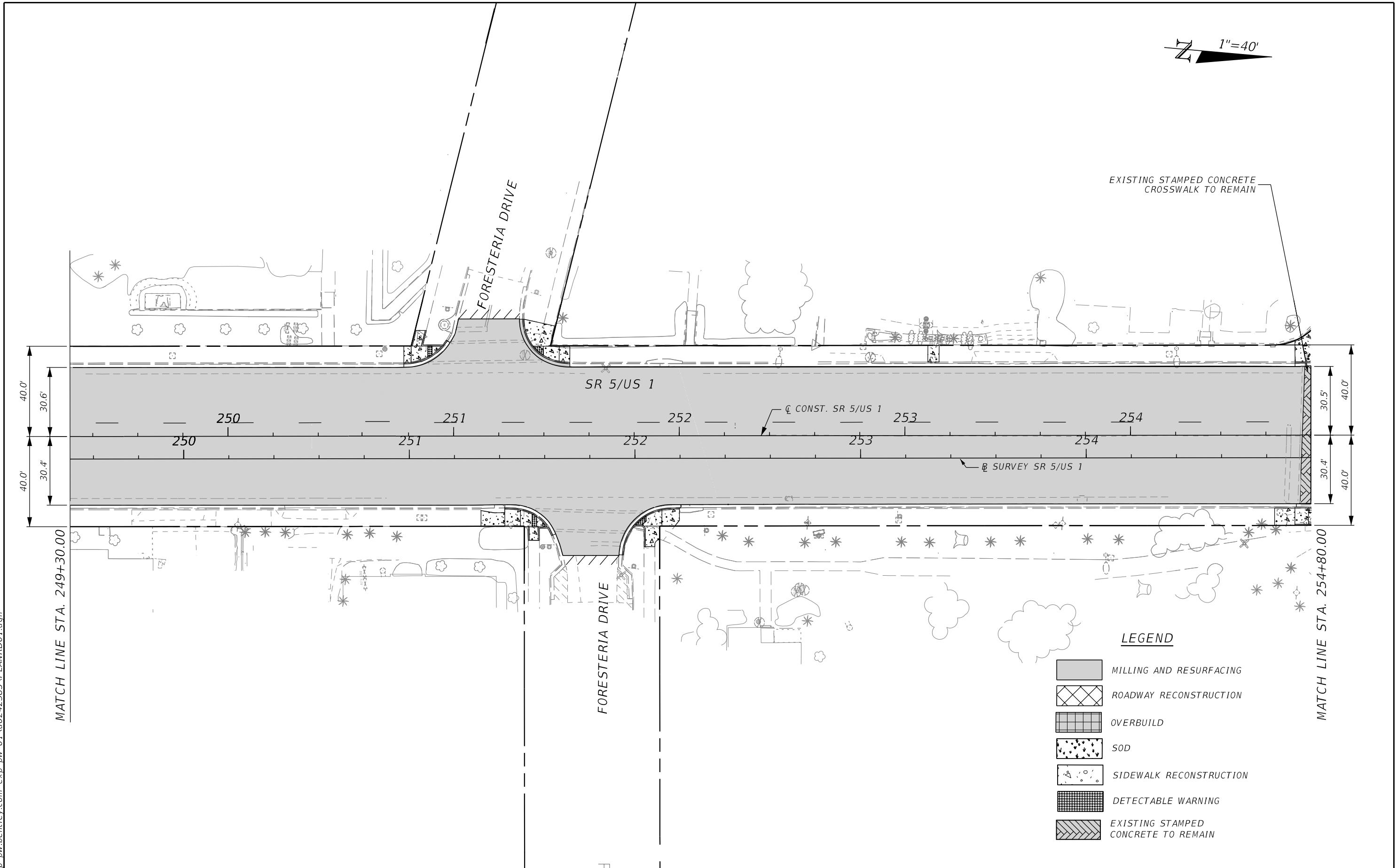
LEGEND

- MILLING AND RESURFACING
- ROADWAY WIDENING (2' MIN.)
- OVERBUILD
- SIDEWALK RECONSTRUCTION
- SOD
- STAMPED CROSSWALK
- DETECTABLE WARNING
- EXISTING STAMPED CONCRETE TO REMAIN

REVISIONS				ENGINEER OF RECORD	STATE OF FLORIDA DEPARTMENT OF TRANSPORTATION			ROADWAY PLAN	SHEET NO.
DATE	DESCRIPTION	DATE	DESCRIPTION	JOSE LUIS SANTIAGO, P.E. LICENSE NUMBER 60248 EXP U.S. SERVICE INC. 201 ALHAMBRA CIR. - SUITE 800 CORAL GABLES, FLORIDA - 33134	ROAD NO.	COUNTY	FINANCIAL PROJECT ID		34
					SR 5	PALM BEACH	438386-2-52-01		

JOSE LUIS SANTIAGO, P.E.
LICENSE NUMBER 60248
EXP U.S. SERVICE INC.
201 ALHAMBRA CIR. - SUITE 800
CORAL GABLES, FLORIDA - 33134

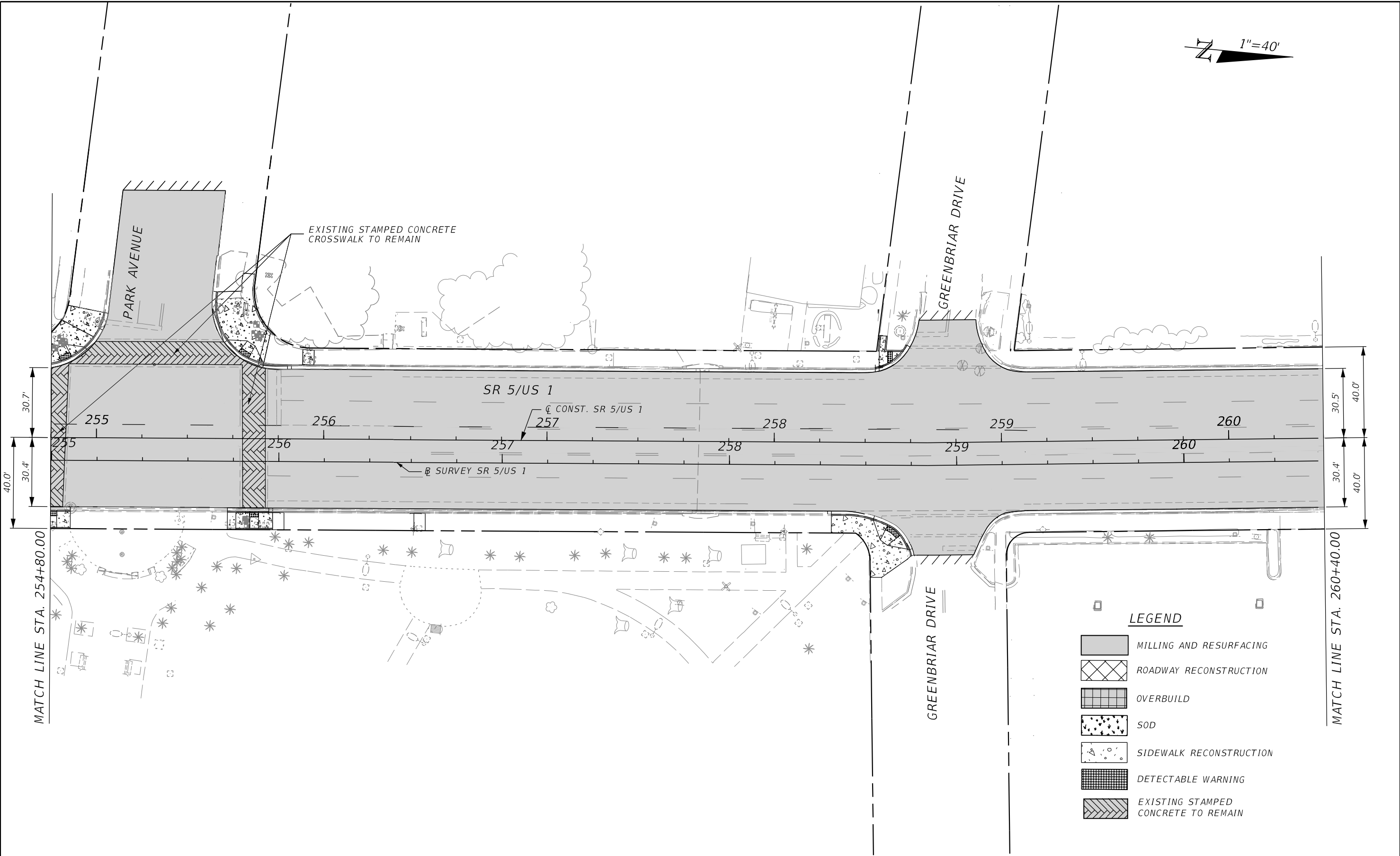
7/3/2024 1:13:13 PM
c:\pw\work\exp-pw\ent\ey.com exp-pw-01\0242385\PLANRD01.dgn



REVISIONS				ENGINEER OF RECORD	STATE OF FLORIDA DEPARTMENT OF TRANSPORTATION			ROADWAY PLAN	SHEET NO. 37
DATE	DESCRIPTION	DATE	DESCRIPTION		ROAD NO.	COUNTY	FINANCIAL PROJECT ID		
				JOSE LUIS SANTIAGO, P.E. LICENSE NUMBER 60248 EXP U.S. SERVICE INC. 201 ALHAMBRA CIR. - SUITE 800 CORAL GABLES, FLORIDA - 33134	SR 5	PALM BEACH	438386-2-52-01		

THE OFFICIAL RECORD OF THIS SHEET IS THE ELECTRONIC FILE DIGITALLY SIGNED AND SEALED UNDER RULE 61G15-23.004, F.A.C.

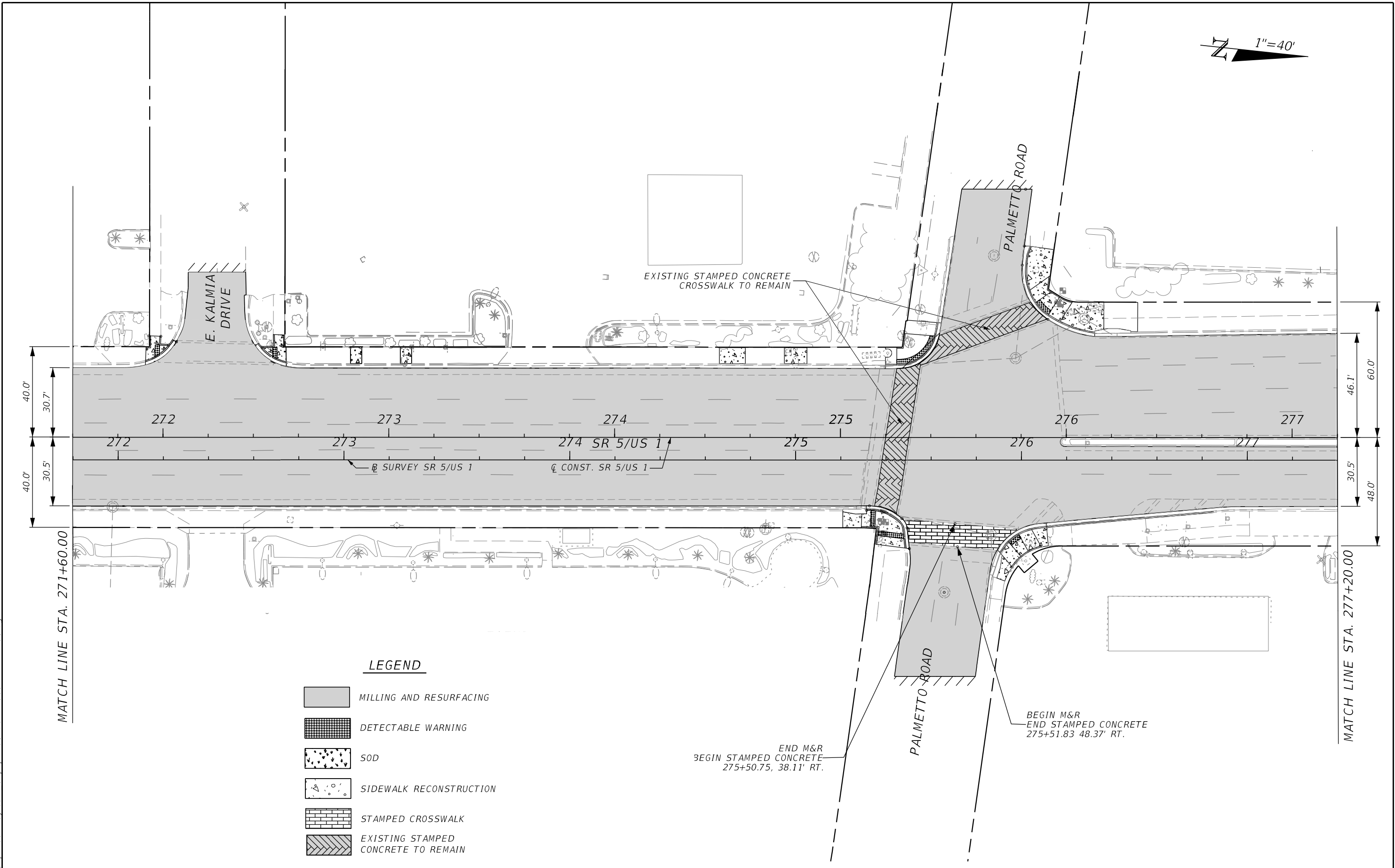
7/3/2024 12:13:06 PM
c:\pw\work\exp-pw\pentley.com exp-pw-01\0242385\PLANRD01.dgn



REVISIONS				ENGINEER OF RECORD	STATE OF FLORIDA DEPARTMENT OF TRANSPORTATION			ROADWAY PLAN	SHEET NO.
DATE	DESCRIPTION	DATE	DESCRIPTION						
				JOSE LUIS SANTIAGO, P.E. LICENSE NUMBER 60248 EXP U.S. SERVICE INC. 201 ALHAMBRA CIR. - SUITE 800 CORAL GABLES, FLORIDA - 33134	ROAD NO.	COUNTY	FINANCIAL PROJECT ID		
					SR 5	PALM BEACH	438386-2-52-01		38

THE OFFICIAL RECORD OF THIS SHEET IS THE ELECTRONIC FILE DIGITALLY SIGNED AND SEALED UNDER RULE 61G15-23.004, F.A.C.

7/3/2024 12:13:53 PM
c:\pw\work\exp-pw\ent\ey.com exp-pw-01\0242385\PLANRD01.dgn

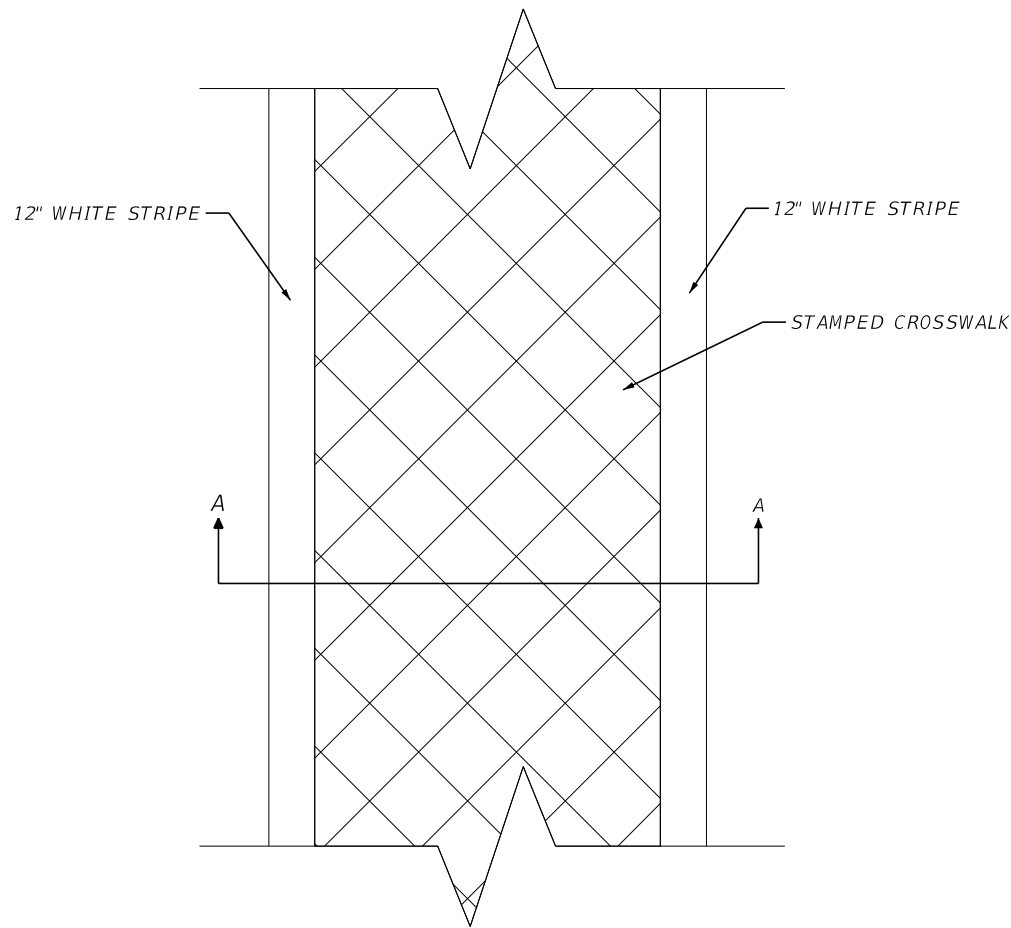


REVISIONS				ENGINEER OF RECORD	STATE OF FLORIDA DEPARTMENT OF TRANSPORTATION			SHEET NO.
DATE	DESCRIPTION	DATE	DESCRIPTION		ROAD NO.	COUNTY	FINANCIAL PROJECT ID	
				JOSE LUIS SANTIAGO, P.E. LICENSE NUMBER 60248 EXP U.S. SERVICE INC. 201 ALHAMBRA CIR. - SUITE 800 CORAL GABLES, FLORIDA - 33134	SR 5	PALM BEACH	438386-2-52-01	41

ROADWAY PLAN

THE OFFICIAL RECORD OF THIS SHEET IS THE ELECTRONIC FILE DIGITALLY SIGNED AND SEALED UNDER RULE 61G15-23.004, F.A.C.

STAMPED CROSSWALKS DETAIL



TOWN OF LAKE PARK
CONCRETE CROSSWALKS

INTERSECTIONS:

SILVER BEACH RD
PALMETTO RD

PATTERN:

LIMESTONE TEXTURED
RUNNING BOND

COLOR:

TOFFEE

CITY OF RIVIERA BEACH
ASPHALT CROSSWALKS

INTERSECTIONS:

W 13TH ST
W 22ND ST
BLUE HERON BLVD

PATTERN:

DIAGONAL HERRINGBONE

COLOR:

RUBY RED

NOTES:

REFER TO ROADWAY AND SIGNING & MARKING PLANS FOR CROSSWALK LOCATIONS AND LAYOUT.

PATTERN TOOL MUST BE CLOSED TOP TO IMPRINT SURFACE TEXTURE AND TO CONTROL JOINT DEPTH. JOINT DEPTH NOT TO EXCEED 1/2".

XYLENE BASED, ACRYLIC COPOLYMER SEALER WITH 20% SOLIDS TO BE USED AS FINAL TREATMENT. PATTERNED CONCRETE MUST BE SEALED WITH ONE COAT OF PATTERNED CONCRETE SEAL. PRODUCT MUST BE APPLIED IN ACCORDANCE WITH MANUFACTURER'S SPECIFICATIONS.

PRIOR TO INSTALLATION OF THE PATTERNED ASPHALT THE CONTRACTOR MUST PROVIDE A 8' x 8' MOCK UP AT THE JOBSITE FOR EACH PATTERN TO BE USED. ENGINEER MUST APPROVE COLOR, TEXTURE, AND WORKMANSHIP OF THE MOCK-UP THEN RETAIN AS A STANDARD FOR JUDGING COMPLETED WORK.

THE COLORING MUST BE CONSISTENT THROUGHOUT.

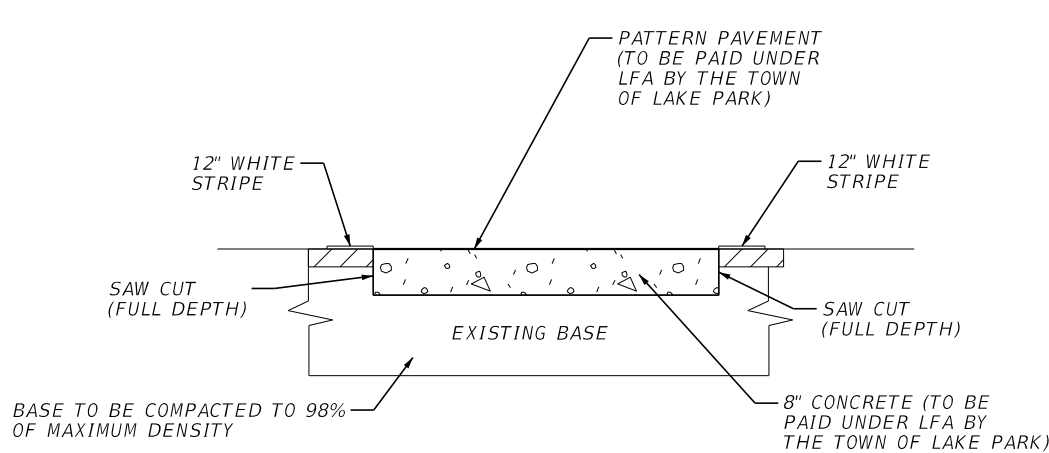
THE SURFACE VARIATIONS MUST NOT BE MORE THAN 1/4" UNDER A 10 FOOT STRAIGHT EDGE, NOR MORE THEN 1/8th INCH ON A 5 FOOT TRANSVERSE SECTION. THE EDGE OF THE CONCRETE MUST BE CAREFULLY FINISHED WITH AN EDGING TOOL HAVING A RADIUS OF 5/8INCH.

COLOR AND PATTERN ARE REPRESENTATIVE OF THE CHOSEN ALTERNATIVE APPROVED BY THE TOWN OR CITY. SIMILAR PATTERNS AND COLORS MAY BE CHOSEN PENDING FINAL APPROVAL BY THE TOWN OR THE CITY PRIOR TO CONSTRUCTION OF MOCK-UP. APPLY AN EVEN APPLICATION OF COLOR HARDENER TO THE CONCRETE SURFACE ACCORDING TO THE MANUFACTURER'S SPECIFICATIONS. A MINIMUM OF TWO APPLICATIONS MUST BE REQUIRED. FLOAT AFTER EACH APPLICATION.

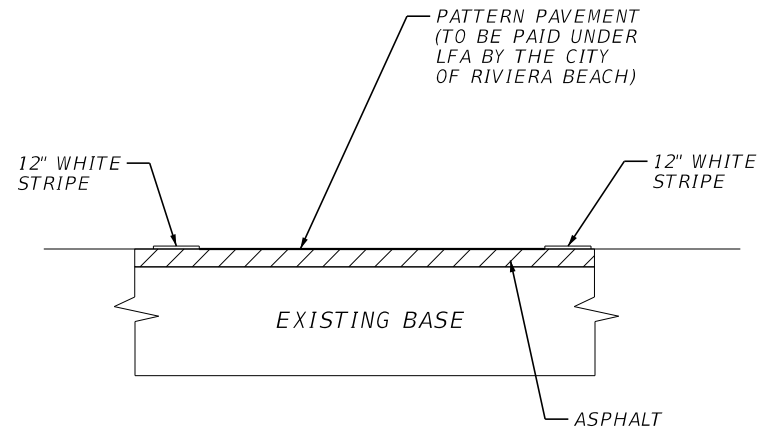
BEFORE PATTERN CONCRETE TOOLS ARE APPLIED TO THE CONCRETE SURFACE APPLY PATTERNED CONCRETE RELEASE AGENT IN ACCORDANCE WITH THE MANUFACTURER'S SPECIFICATIONS. WHILE CONCRETE IS STILL IN ITS PLASTIC STATE, APPLY THE DESIRED PATTERNED CONCRETE TOOL PATTERN TO THE SURFACE OF THE CONCRETE.

TOOLS MUST BE PROMPTLY TAMPED INTO THE SURFACE TO ACHIEVE THE DESIRED TEXTURE.

TRANSVERSE JOINTS MUST BE CUT AT ALL EDGE AND LANE LINES EXCEPT WHEN SUCH A JOINT WILL CREATE A SLAB SECTION LESS THEN 10'. THE JOINTS MUST BE 1/4 THE DEPTH OF THE SLAB AND SEALED.



SECTION A - A
CONCRETE



SECTION A - A
ASPHALT

REVISIONS				ENGINEER OF RECORD	STATE OF FLORIDA DEPARTMENT OF TRANSPORTATION			SHEET NO.
DATE	DESCRIPTION	DATE	DESCRIPTION		ROAD NO.	COUNTY	FINANCIAL PROJECT ID	
				JOSE LUIS SANTIAGO, P.E. LICENSE NUMBER 60248 EXP U.S. SERVICE INC. 201 ALHAMBRA CIR. - SUITE 800 CORAL GABLES, FLORIDA - 33134	SR 5	PALM BEACH	438386-2-52-01	48

SPECIAL DETAILS

7/2/2024 4:37:15 PM BallesterM
c:\pw_work\exp-pw\entleley.com_exp-pw-01\0142048.SPDRD02.dgn

THE OFFICIAL RECORD OF THIS SHEET IS THE ELECTRONIC FILE DIGITALLY SIGNED AND SEALED UNDER RULE 61G15-23.004, F.A.C.