

2nd Stakeholders' Meeting on the Streetscape & Landscape Improvements for Park Avenue and 10th Street

Department of Public Works



Stakeholder's Meeting Agenda

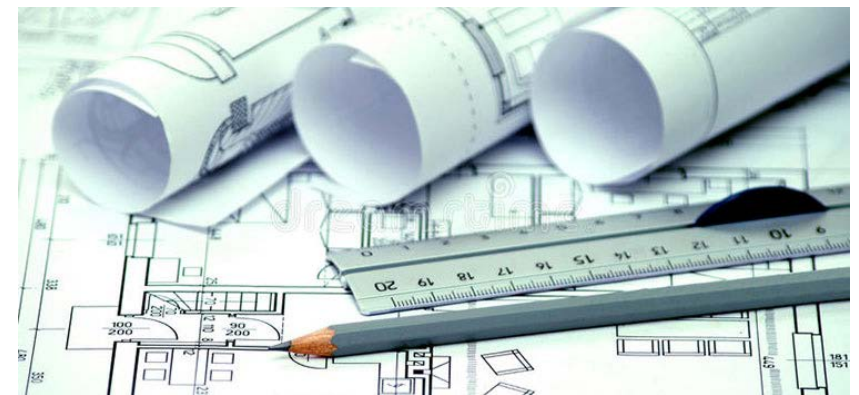


1. Introductions
2. Project Location
3. Project Background
4. Results from Previous Public Outreach
5. Conceptual Streetscape and Landscape Design
6. Project Illustrations
7. Implementation Timeline and Next Steps
8. Table Discussions
9. Q&A
10. Closing Comments

Project Team



- **Board Members of the Community Redevelopment Agency (CRA)**
- **John D'Agostino** – Town Manager
- **Roberto Travieso** – Public Works Director
- **Hays Henderson, PLA** – Landscape Architect
- **John Wille** – Capital Projects Manager

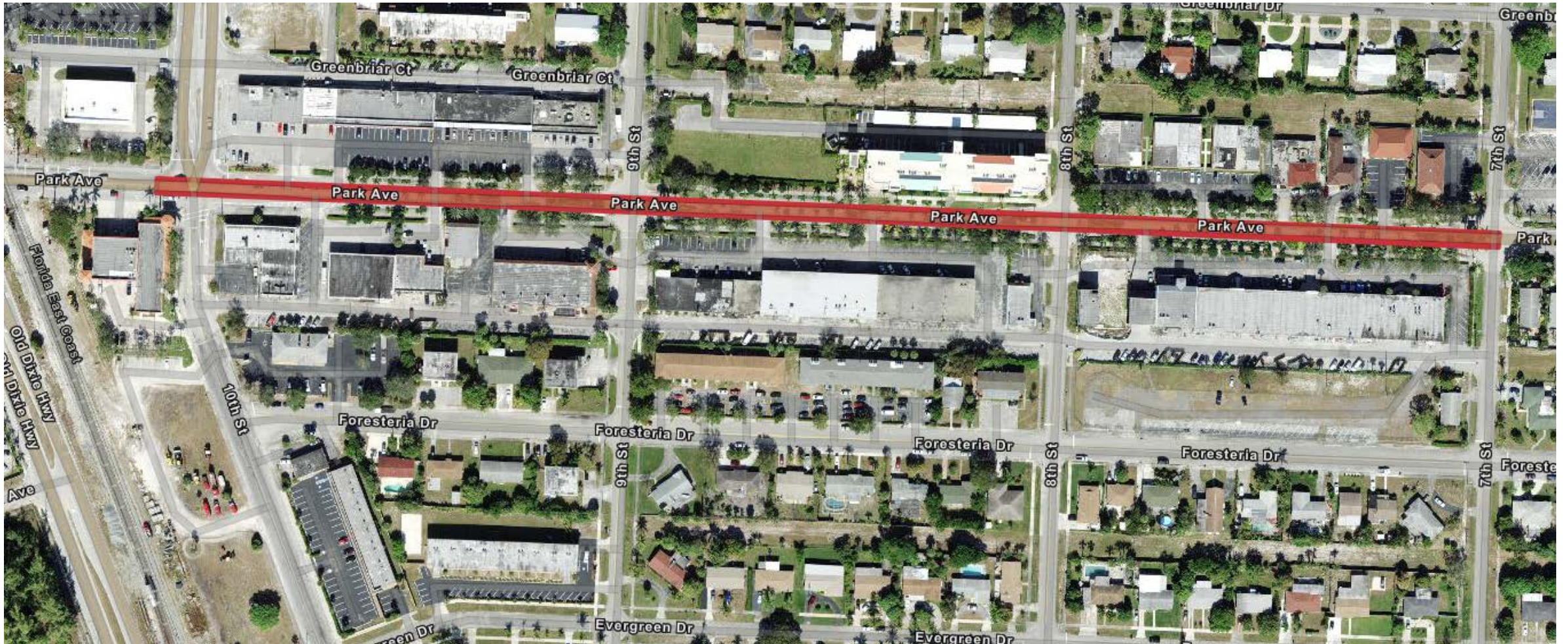




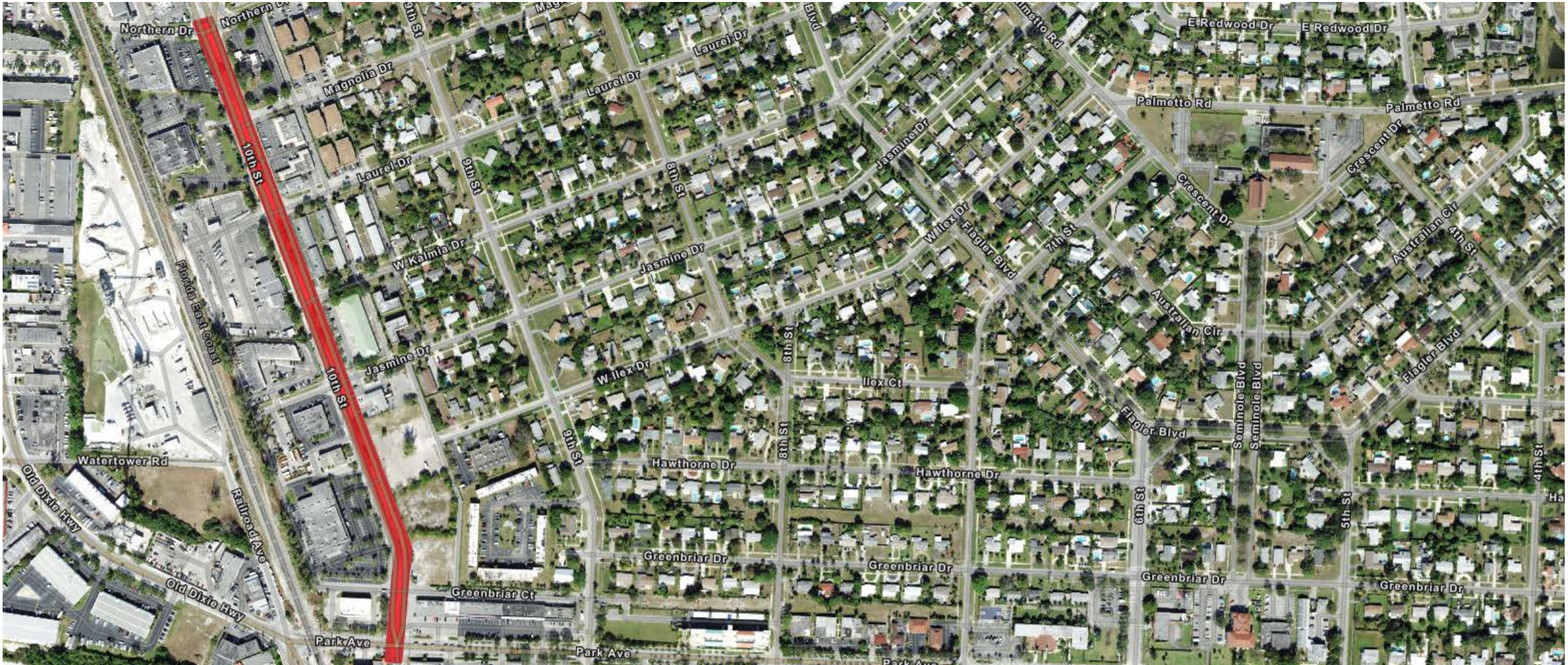
Project Background

ROBERTO TRAVIESO, DIRECTOR OF PUBLIC WORKS

Project Location on Park Avenue



Project Location on 10th Street



Goals of the Community Redevelopment Agency (CRA)



“...to strengthen the Lake Park community and its residents, add vitality to its commercial corridors, reinvigorate its aging structures, and personify the strong sense of pride in this historic community.”

CRA Master Plan

Project Background



- The CRA is committed to presenting a vibrant and inviting look and feel within its boundaries
- **Fall 2021:** Contracted with Landscape Architectural Firm, JMorton, to develop conceptual design options for the project
- **January 2022:** Hosted 1st Stakeholder's Meeting
- **March 2022:** Presented results from Stakeholder's Meeting during meeting of the CRA; approved proposal to design project



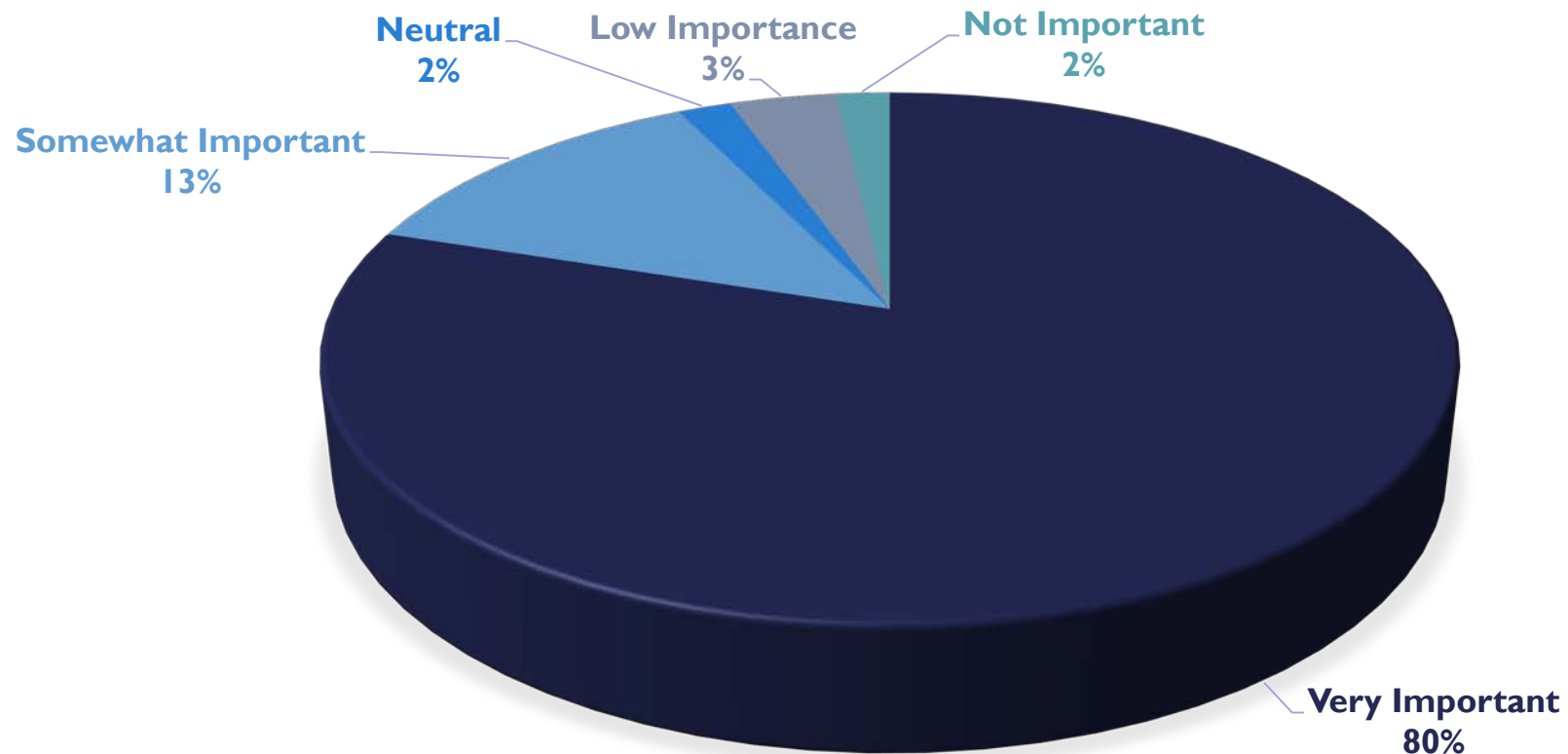
Results from 1st Stakeholder's Meeting

ROBERTO TRAVIESO, DIRECTOR OF PUBLIC WORKS

Park Avenue & 10th Street Hardscape Improvements



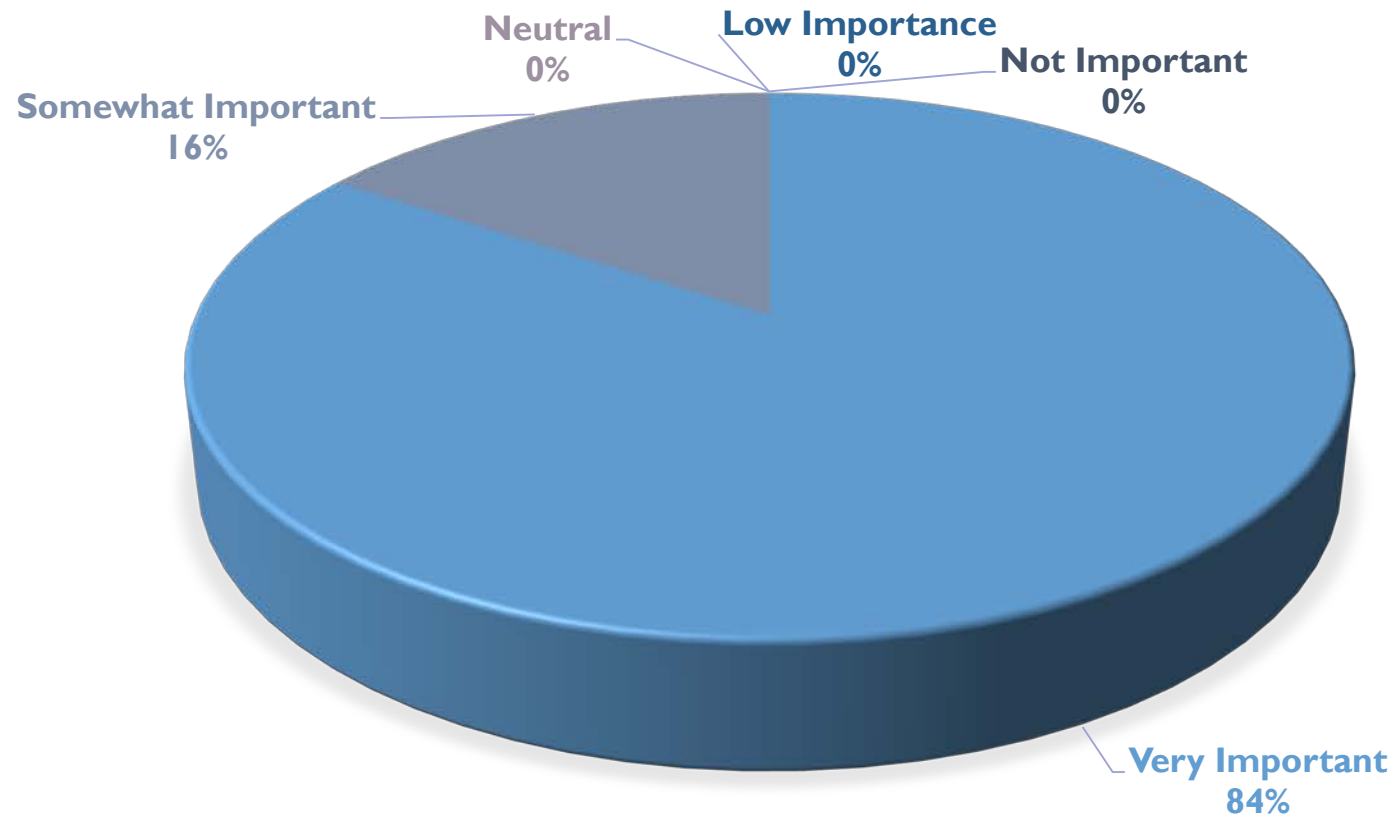
IMPLEMENT HARDSCAPE IMPROVEMENTS?



Park Avenue & 10th Street Landscape Improvements



IMPLEMENT LANDSCAPE IMPROVEMENTS?



Public Comments



- Paver sidewalks create a big expense
- The intersection of Park Ave and 10th Street needs special attention
- Prefer native plants in common areas
- Use sponsorship from businesses/residences for trees
- Include sustainable plantings
- Will there be any public art?
- Trees are preferred over palms, art
- Add cycling markings or bike lanes
- Landscape should include art and sculptures
- Concerned with the length of project; implement quickly



Design Plan Updates

HAYS HENDERSON, PLA

Kelsey Market
Parking

Existing Palm to Remain (Typ.)

Existing Tree to Remain (Typ.)

9th Street

Alternate:
Existing Sidewalk Pavers to be Removed
Match Sidewalk Cross Band Paver

Existing Tree to Remain (Typ.)

One Park Place
Condominium

Existing Conc. Sidewalk to Remain
Add 12" Paver Band Accent

One Park
Condomi

Existing Shrubs to Remain

Existir

Groundcover

Groundcover

Flowering
Groundcover

Small Shrub

Flowering
Groundcover

Flowering
Groundcover

Small Shrub

Groundcover

Flowering
Groundcover

Accent Shrub

Park Ave.

Accent Shrub

Small Shrub

Flowering
Groundcover

Flowering
Groundcover

Small Shrub

Park Ave.

Groundcover

Groundcover

PARK AVE/9TH STREET

9th Street

Existing Tree to Remain (Typ.)

US Post Office
Parking

Casper's on Park
Parking

One Park Place
Condominium

One Park Place
Condominium

Existing Tree to Remain (Typ.)

Existing Conc. Sidewalk to Remain
Add 12" Paver Band Accent

Proposed Tree to Match
Existing (Typ.)
12' Ht. Min. at Install

Existing Bus Stop

Existing Palm to Remain (Typ.)

Existing Palm to Remain (Typ.)

Accent Shrub

Park Ave.

Existing Shrubs to Remain

Small Shrub

Flowering
Groundcover

Small Irregular Planters
to be Planted With Heat
Tolerant Species

Flowering
Groundcover

Small Shrub

Flowering
Groundcover

Existing Shrubs
to Remain

Groundcover

Small Irregular Planters
to be Planted With Heat
Tolerant Species

Park Ave.

Existing Shrubs
to Remain

Existing Shrubs to Remain

Existing Tree to Remain (Typ.)

Existing Palm to Remain (Typ.)

Existing Palm to Remain (Typ.)

PARK AVE BETWEEN 8TH AND 9TH STREETS

Confusion Records
Parking

Easel Art Supply Center
Parking

One Park Place
Condominium

8th Street

Proposed Palm to
Match Existing (Typ.)
12' CT. Min. at Install

Existing Palm to Remain (Typ.)

Alternate:
Existing Sidewalk Pavers to be Removed
Match Sidewalk Cross Band Paver

Remove Existing
Tree

Existing Palm to Remain (Typ.)

Small Shrub

Proposed Palm to
Match Existing (Typ.)
12' CT. Min. at Install

Park Ave.

Existing Shrubs
to Remain

Small Shrub

Groundcover

Accent Shrub

Small Shrub

Small Shrub

Flowering
Groundcover

Flowering
Groundcover

Flowering
Groundcover

Small Shrub

Park Ave.

Existing Tree to Remain (Typ.)

Existing Palm to Remain (Typ.)

Remove Existing
Tree

Small Shrub

8th Street

Proposed Palm to
Match Existing (Typ.)
12' CT. Min. at Install

Lake Park Recreation
Parking

PARK AVE AT 8TH STREET

Neighbors Food Markt
Parking

Laurel
Drive

Laurel Park Residential
Parking

Existing Hedge to Remain

Remove Existing Median
Add Sidewalk

10TH Street

(3) Flowering Understory Tree
Relocate (5) Existing Palms

Existing Tree to be Removed

10TH Street

(5) Existing Palms Transplanted

(8) Existing Palms to Remain

Small Shrub

Small Shrub

Accent Shrub

Existing Tree to Remain

Groundcover

Ornamental Grasses

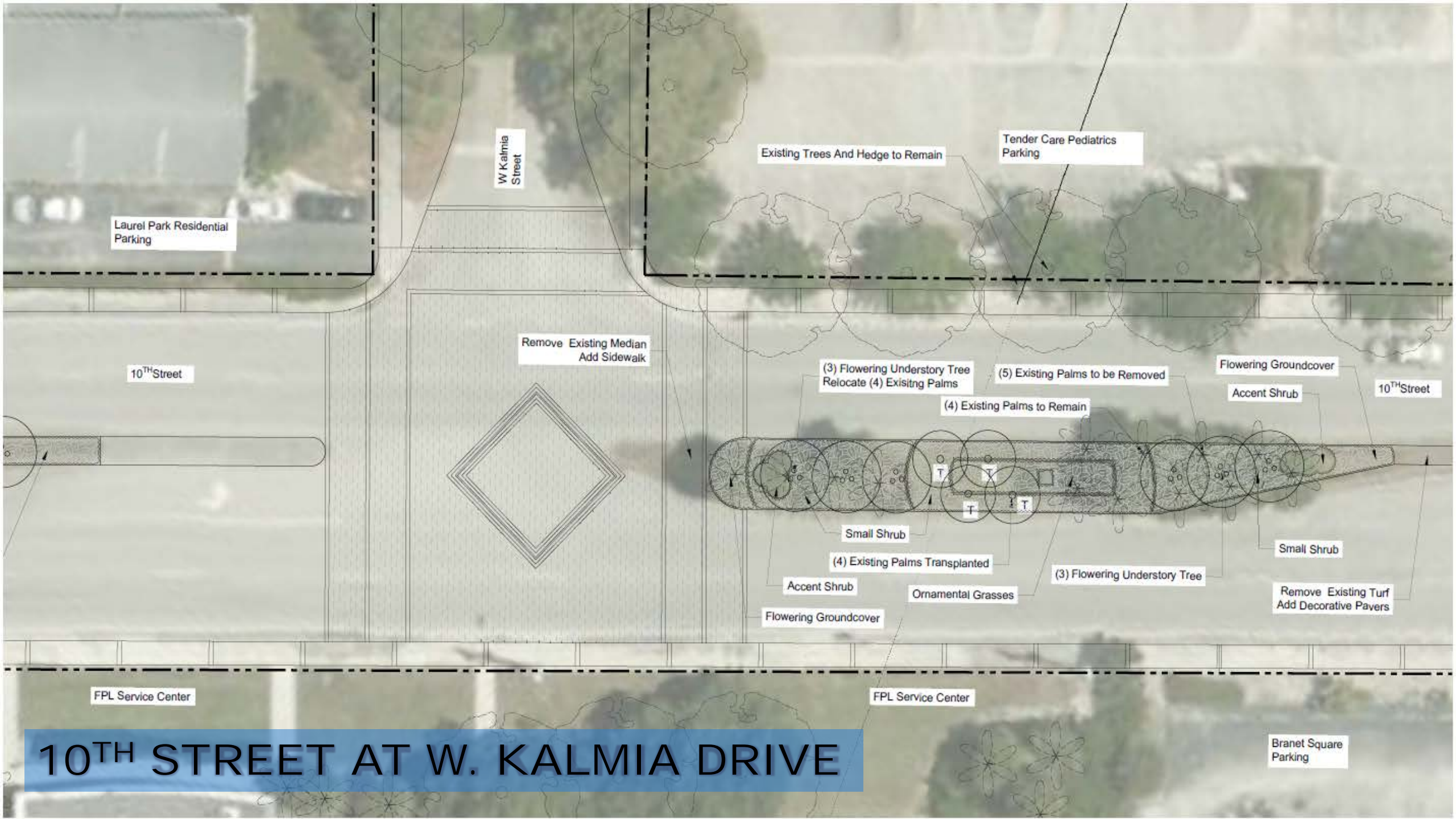
(3) Flowering Understory Tree

Flowering Groundcover

FPL Service Center

FPL Service Center

10TH STREET AT LAUREL DRIVE



W Kalmia Street

Laurel Park Residential Parking

Existing Trees And Hedge to Remain

Tender Care Pediatrics Parking

10TH Street

Remove Existing Median
Add Sidewalk

(3) Flowering Understory Tree
Relocate (4) Existing Palms

(5) Existing Palms to be Removed

Flowering Groundcover

Accent Shrub

10TH Street

(4) Existing Palms to Remain

Small Shrub

(4) Existing Palms Transplanted

Accent Shrub

Flowering Groundcover

Ornamental Grasses

(3) Flowering Understory Tree

Small Shrub

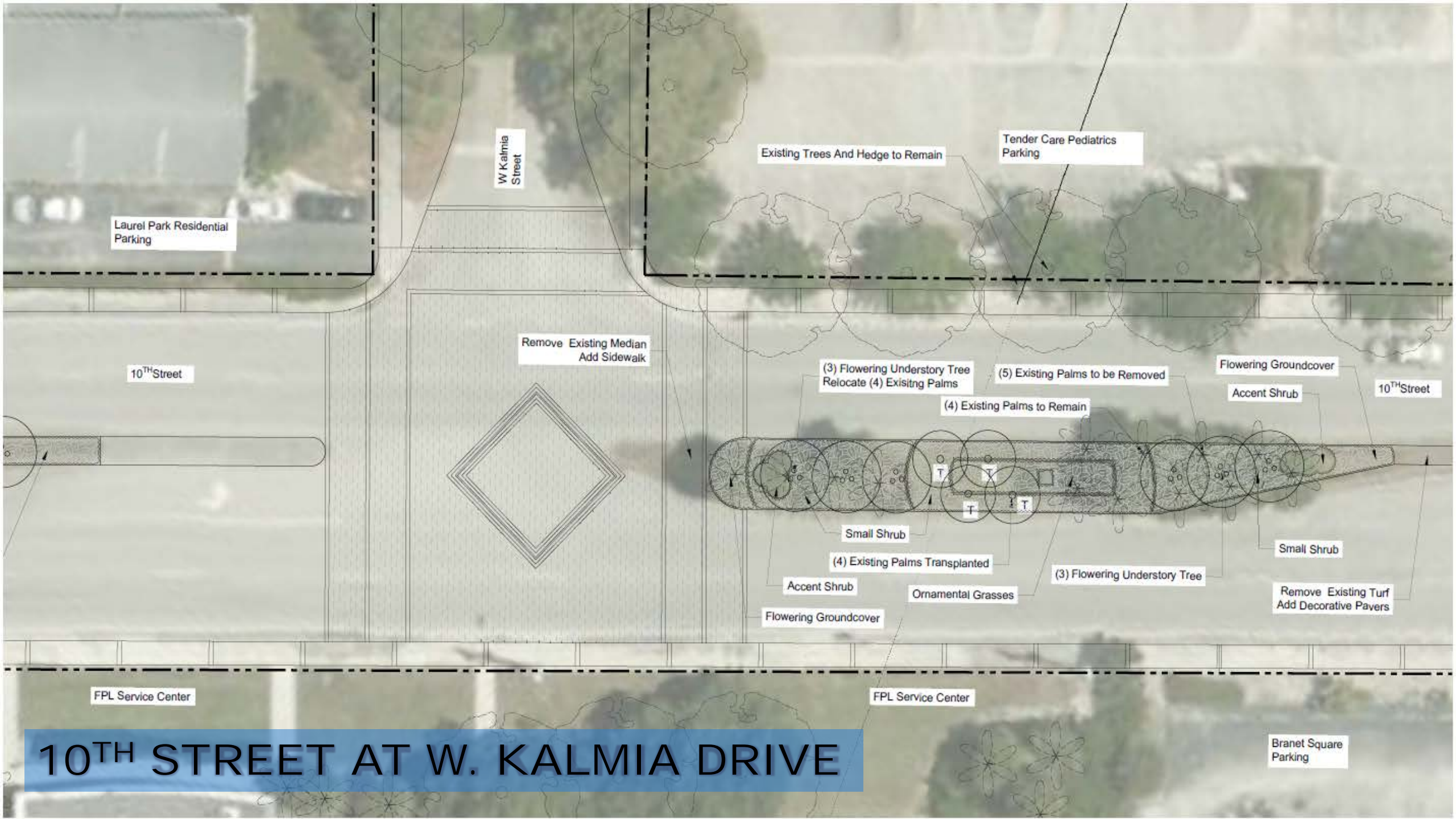
Remove Existing Turf
Add Decorative Pavers

FPL Service Center

FPL Service Center

Branet Square
Parking

10TH STREET AT W. KALMIA DRIVE



W Kalmia
Street

Laurel Park Residential
Parking

Existing Trees And Hedge to Remain

Tender Care Pediatrics
Parking

10TH Street

Remove Existing Median
Add Sidewalk

(3) Flowering Understory Tree
Relocate (4) Existing Palms

(5) Existing Palms to be Removed

Flowering Groundcover

Accent Shrub

10TH Street

(4) Existing Palms to Remain

Small Shrub

(4) Existing Palms Transplanted

Accent Shrub

Flowering Groundcover

Ornamental Grasses

(3) Flowering Understory Tree

Small Shrub

Remove Existing Turf
Add Decorative Pavers

FPL Service Center

FPL Service Center

Branet Square
Parking

10TH STREET AT W. KALMIA DRIVE



Design Concept Illustrations

HAYS HENDERSON, PLA







Construction Cost Estimate

JOHN WILLE, CAPITAL PROJECTS MANAGER

Construction Cost Estimate (Park Ave)



Description	Services Cost
SIDEWALK TREATMENTS	\$60,000.00
LANDSCAPE	\$25,000.00
IRRIGATION	\$8,000.00
STREETSCAPE AMENITIES	\$5,000.00
SIDEWALK PRESSURE CLEANING	\$6,000.00
SUPERVISION/DEBRIS REMOVAL/MOT/PERMIT FEES	\$23,000.00
CONTRACTOR OH&P	\$20,000.00
ESTIMATED PER BLOCK TOTAL:	\$147,000.00
ESTIMATED TOTAL FOR PROJECT (3 BLOCKS):	\$441,000.00

Construction Cost Estimate (10TH Street)



Description	Services Cost
SIDEWALK TREATMENTS	\$65,000.00
LANDSCAPE	\$35,000.00
IRRIGATION	\$15,000.00
STREETSCAPE AMENITIES	\$5,000.00
SIDEWALK PRESSURE CLEANING	\$4,000.00
SUPERVISION/DEBRIS REMOVAL/MOT/PERMIT FEES	\$23,000.00
CONTRACTOR OH&P	\$20,000.00
ESTIMATED PER BLOCK TOTAL:	\$167,000.00
ESTIMATED TOTAL FOR PROJECT (5 BLOCKS):	\$835,000.00



Construction Timeline; Next Steps

JOHN WILLE, CAPITAL PROJECTS MANAGER

Implementation Timeline & Next Steps



- Complete Design Plans: **May 2023**
- Continue to engage with Stakeholders regarding project design and implementation
- Program Project phases, based on funding availability
- Bid Project (in phases) for construction

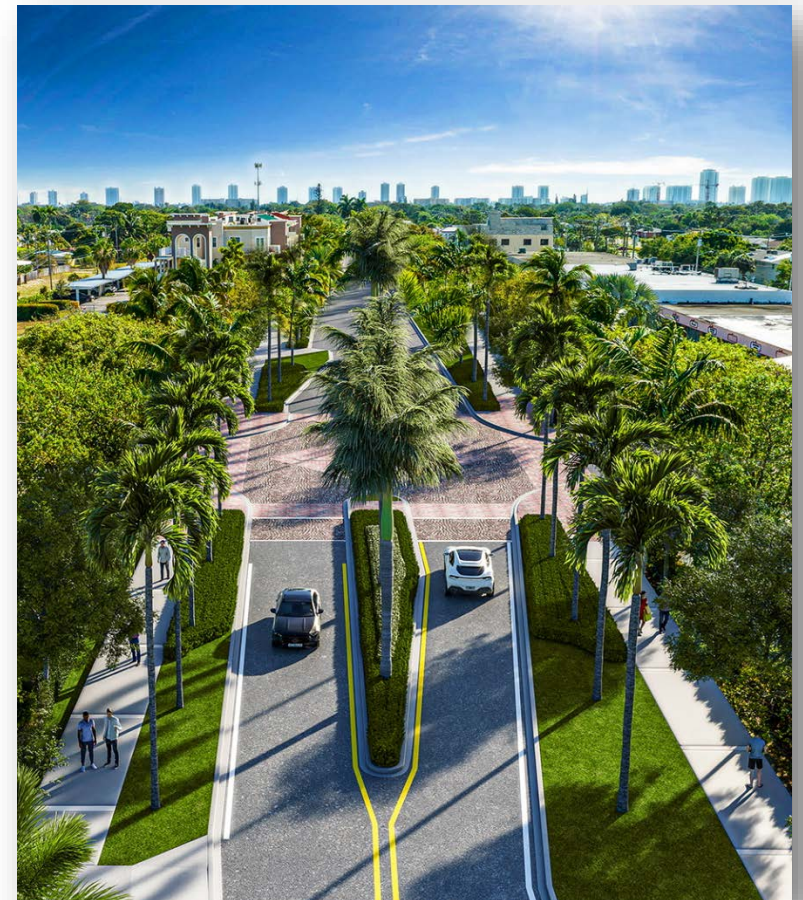




Table Discussion & Activity

DURATION: UP TO 1 HOUR



Questions & Comments