

Presentation on the Seawall Structural Assessment

**Public Meeting between the
Town of Lake Park and the
Lake Shore Drive Homeowners' Association**

Roberto Travieso, Public Works Director

March 23, 2023

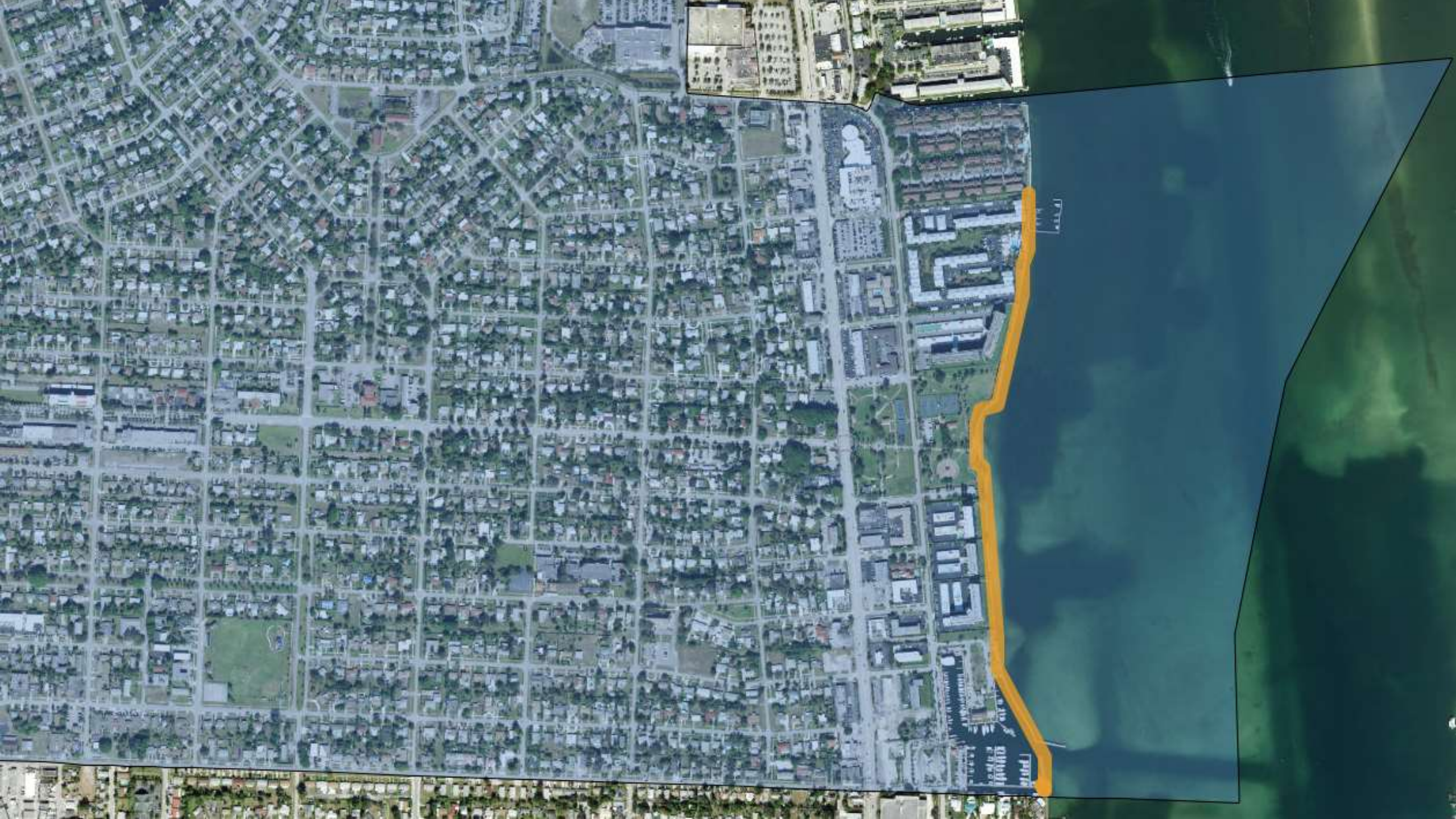


Background



- The Town is protected by an 0.8-mile (4,284 LF) seawall, extending from Palmetto Dr to Silver Beach Rd
- Public Property: **1,962 LF (46%)**
- Private Property: **2,322 LF (54%)**
- The Town secured a grant in 2020 to conduct structural assessment of the entire wall
- Coastal Systems Int'l completed Assessment in January 2021





Seawall Distribution



	Property	Seawall Length (LF)
1	Lake Park Marina	1,096
2	301/401/501 Lake Shore Drive	775
3	Lake Shore Park	866
4	Lake Harbour	370
5	Marina Key	624
6	Easements	32
7	Bay Reach	N/A
	Total	\$4,284 LF

Findings & Recommendations



- Replace 775-wall section abutting 301/401/501 Lake Shore Drive properties (approx. 18%)
- Repair and Raise remaining seawall sections
- Likely more cost effective to replace entire seawall (versus demo/removal)
- Bay Reach Condominium already replaced its seawall (approx. 521 LF)



Construction Cost Estimates



- Historic increases to labor and material costs
- Estimated per-linear foot construction cost:
\$3,500/LF (excludes boardwalk, costs associated with general conditions, mobilization, Contractor OH&P, etc.)
- Public Share: Approx. \$6.86M
- Private Share: Approx. \$8.12 Million



Funding Options



■ PUBLIC PROPERTY:

- Florida Inland Navigation District (F.I.N.D.) Grant*
- Grant, other
- Revenue Anticipation Bond



■ PRIVATE PROPERTY

- Private Funding (Loan)
- Revenue Anticipation Bond
- Designation as Special Funding District



*Requires public access.

Next Steps



- HOA's notify the Town in writing about interest to participate
- Parties continue dialogue
- Draft and coordinate public/private agreement
- Develop conceptual design for project \$\$
- Develop construction ready plans \$\$\$
- Apply for required permit(s) \$\$
- Construction of Project \$\$\$\$\$



Connect with Us!



■ New Service Request Portal

- Request Service
- Report Issues



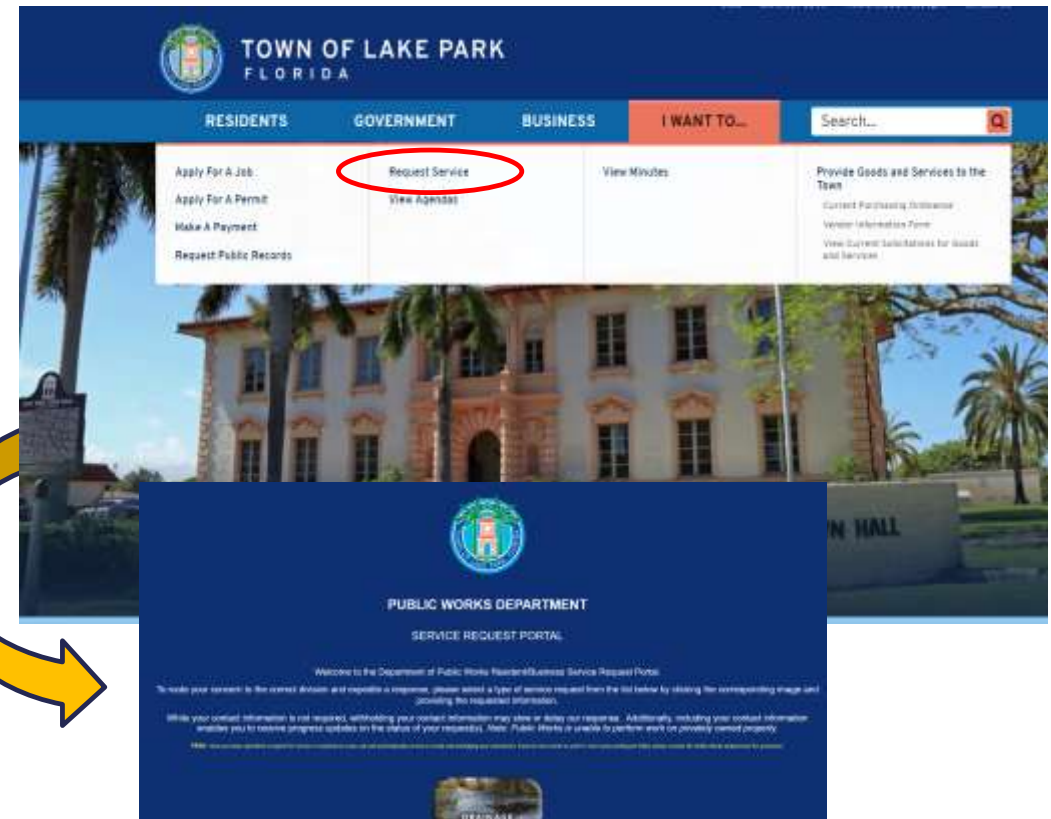
(561) 881-3345



publicworks@lakeparkflorida.gov



SCAN AND
BOOKMARK
ME!





Discussion/Questions