



Civil Engineering | Land Planning
Surveying | Construction Services

Gainesville | St. Augustine
3530 NW 43rd Street
Gainesville, FL 32606

Suwannee River Water Management District
9225 CR 45
Live Oak, FL 32060

June 6, 2022

Subject: Sonic Drive-In restaurant

The Sonic Drive-In restaurant project is located on parcel number 35-3S-16-02524-103 located on NW Centurion Ct, approximately 600 feet north of the intersection of NW Centurion Ct and US HWY 90. The project proposes a new 1,227 SF restaurant building with associated parking and utilities.

The project site is part of a larger development which was previously permitted with Suwannee River Water Management District (SRWMD) under the project name Gateway Crossing and permit number 226410-1.

The proposed site will direct water to inlet structures in the parking lot, which will direct runoff to the master stormwater facility. The permit allows for 75% impervious on lots 1-4 and 7-10. Please see the attached post development exhibit of the current master development.

The Sonic Restaurant project proposes 31,216 SF or 59.22% of impervious area on the 1.21+/- Ac. Site located on Lot 3. We are requesting a letter of conformance with permit number 226410-1.

Sincerely,

Christopher A. Potts, P.E.
Director of Civil Engineering, JBPro



EXISTING STORM SEWER
STRUCTURE SCHEDULE

Table with columns: ID, TYPE, SIZE, MATERIAL, LENGTH, SLOPE, ELEVATION, NOTES. Lists existing storm sewer structures such as D-21-11, D-21-12, D-21-13, D-21-14, D-21-15, D-21-16, D-21-17, D-21-18, D-21-19, D-21-20, D-21-21, D-21-22, D-21-23, D-21-24, D-21-25, D-21-26, D-21-27, D-21-28, D-21-29, D-21-30, D-21-31, D-21-32, D-21-33, D-21-34, D-21-35, D-21-36, D-21-37, D-21-38, D-21-39, D-21-40, D-21-41, D-21-42, D-21-43, D-21-44, D-21-45, D-21-46, D-21-47, D-21-48, D-21-49, D-21-50, D-21-51, D-21-52, D-21-53, D-21-54, D-21-55, D-21-56, D-21-57, D-21-58, D-21-59, D-21-60, D-21-61, D-21-62, D-21-63, D-21-64, D-21-65, D-21-66, D-21-67, D-21-68, D-21-69, D-21-70, D-21-71, D-21-72, D-21-73, D-21-74, D-21-75, D-21-76, D-21-77, D-21-78, D-21-79, D-21-80, D-21-81, D-21-82, D-21-83, D-21-84, D-21-85, D-21-86, D-21-87, D-21-88, D-21-89, D-21-90, D-21-91, D-21-92, D-21-93, D-21-94, D-21-95, D-21-96, D-21-97, D-21-98, D-21-99, D-21-100.

STORM SEWER
STRUCTURE SCHEDULE

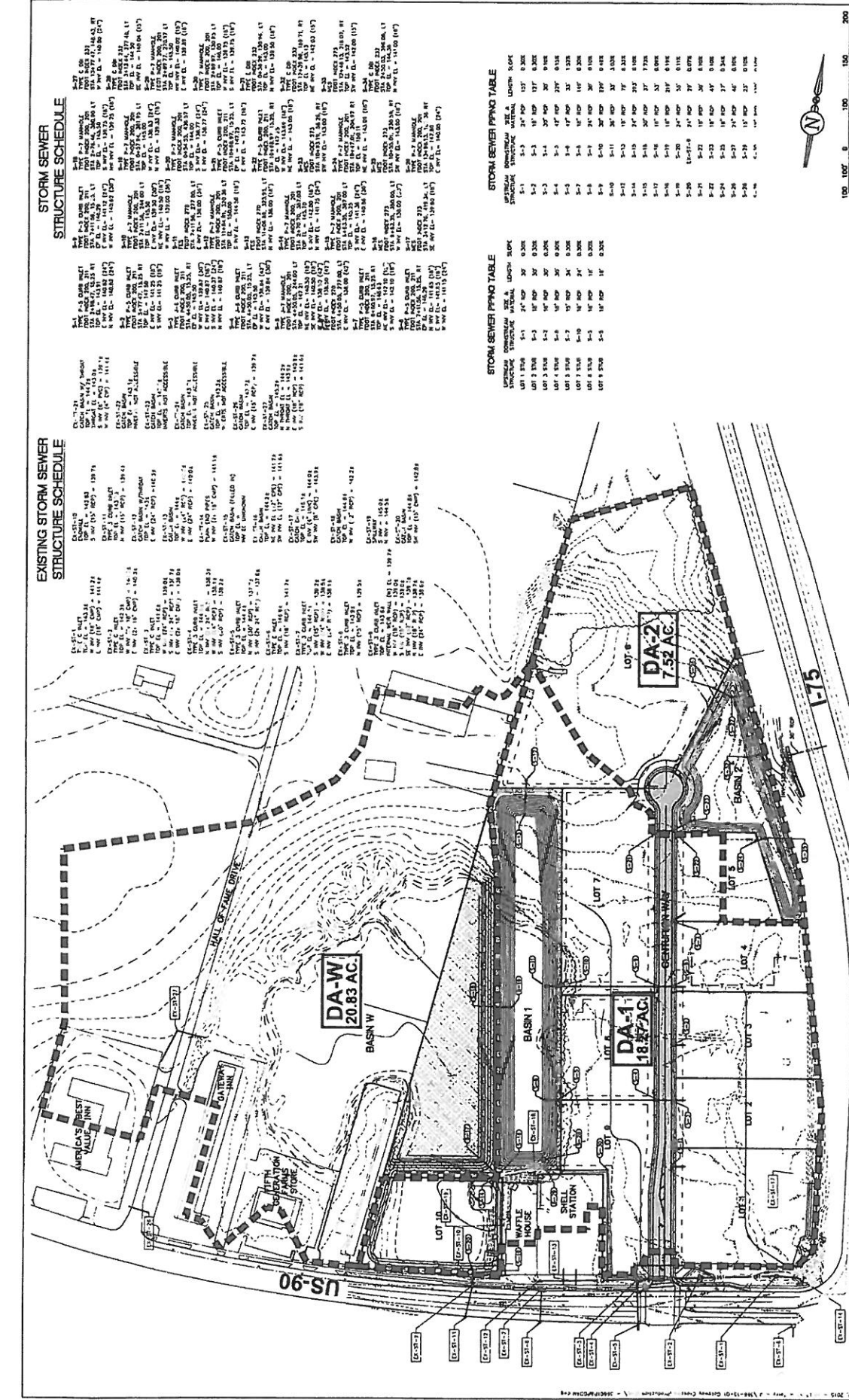
Table with columns: ID, TYPE, SIZE, MATERIAL, LENGTH, SLOPE, ELEVATION, NOTES. Lists proposed storm sewer structures such as D-21-101, D-21-102, D-21-103, D-21-104, D-21-105, D-21-106, D-21-107, D-21-108, D-21-109, D-21-110, D-21-111, D-21-112, D-21-113, D-21-114, D-21-115, D-21-116, D-21-117, D-21-118, D-21-119, D-21-120, D-21-121, D-21-122, D-21-123, D-21-124, D-21-125, D-21-126, D-21-127, D-21-128, D-21-129, D-21-130, D-21-131, D-21-132, D-21-133, D-21-134, D-21-135, D-21-136, D-21-137, D-21-138, D-21-139, D-21-140, D-21-141, D-21-142, D-21-143, D-21-144, D-21-145, D-21-146, D-21-147, D-21-148, D-21-149, D-21-150, D-21-151, D-21-152, D-21-153, D-21-154, D-21-155, D-21-156, D-21-157, D-21-158, D-21-159, D-21-160, D-21-161, D-21-162, D-21-163, D-21-164, D-21-165, D-21-166, D-21-167, D-21-168, D-21-169, D-21-170, D-21-171, D-21-172, D-21-173, D-21-174, D-21-175, D-21-176, D-21-177, D-21-178, D-21-179, D-21-180, D-21-181, D-21-182, D-21-183, D-21-184, D-21-185, D-21-186, D-21-187, D-21-188, D-21-189, D-21-190, D-21-191, D-21-192, D-21-193, D-21-194, D-21-195, D-21-196, D-21-197, D-21-198, D-21-199, D-21-200.

STORM SEWER PIPING TABLE

Table with columns: PIPE SIZE, LENGTH, SLOPE, MATERIAL, STRUCTURE. Lists storm sewer piping for various structures such as D-21-101 through D-21-200, including pipe size (e.g., 18", 24", 30", 36") and material (e.g., 1525 DTP).

STORM SEWER PIPING TABLE

Table with columns: PIPE SIZE, LENGTH, SLOPE, MATERIAL, STRUCTURE. Lists storm sewer piping for various structures such as D-21-101 through D-21-200, including pipe size (e.g., 18", 24", 30", 36") and material (e.g., 1525 DTP).



REVISIONS table with columns: NO., DATE, DESCRIPTION.

PROJECT INFORMATION:

- PROJECT: GATEWAY CROSSING
- CLIENT: GWC DEVELOPMENT PARTNERS, LLC
- SCALE: 1"=100'
- DATE: 01/11/2013

DESIGNED BY: [Name]

PRELIMINARY FOR REVIEW ONLY

38251 NW 108th Street • Colorado, Florida 33066
PHONE: 305.548.4455 FAX: 305.548.4455
EMAIL: contact@jbbrowncorp.com
Reg. No. 12952 - CE 2-0319
Professional Engineer CA No. 52496

JBrown
Professional Group, Inc
ONE Inverness • Inverness, Florida

STORM SEWER POST-DEVELOPMENT DRAINAGE AREA MAP

C4.2