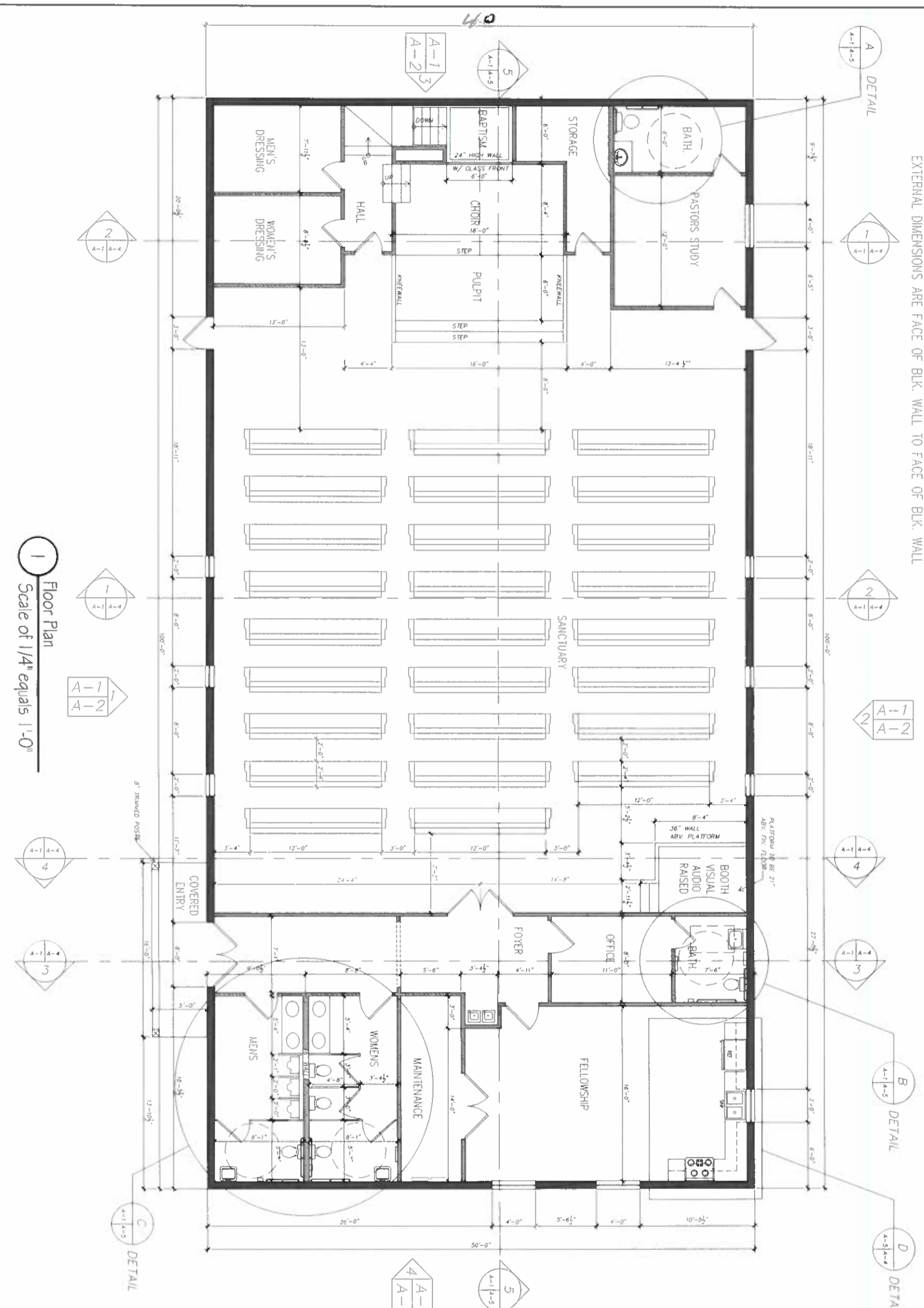






NOTE: ALL INTERNAL WALLS ARE 4-1/2"  
EXTERNAL DIMENSIONS ARE FACE OF BLK. WALL TO FACE OF BLK. WALL

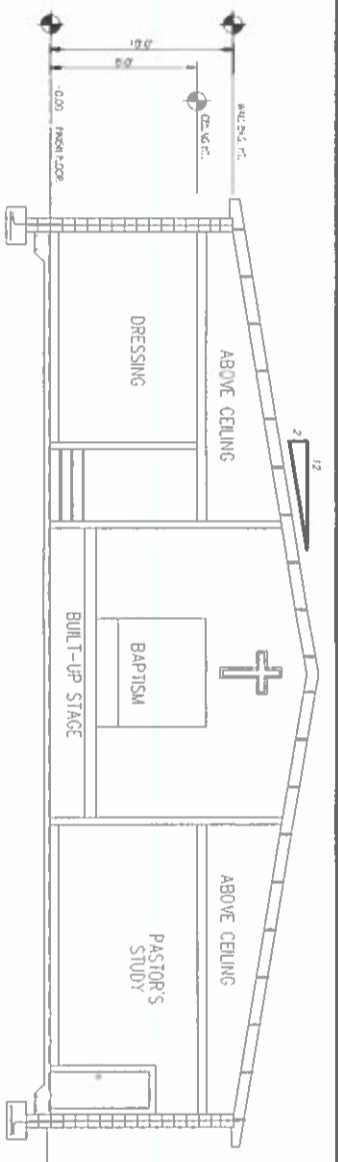


1 Floor Plan  
Scale of 1/4" equals 1'-0"

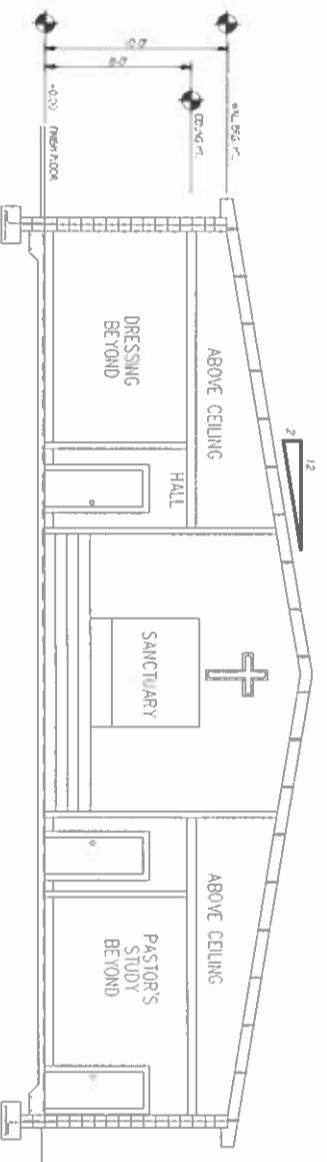
<p><b>A1.0</b></p> <p>DRIVING INSTRUCTIONS</p> <p>ANTHONY GEORGE JR PE</p> <p>1130 WILSON BLVD LAKE CITY, FL 32055 PHONE: (800) 212-5050 FAX: (800) 212-5051 http://www.ahgpe.com</p>	<p>PROJECT NO.</p> <p>DATE</p> <p>REVISION</p> <p>BY</p>	<p>FLOOR PLAN</p>	<p>REFUGE CHURCH OF OUR LORD JESUS CHRIST</p> <p>791 WILSON STREET LAKE CITY, FL 32055</p>	
	<p>DESIGNED BY: A.G.</p> <p>DRAWN BY:</p> <p>CHECKED BY:</p> <p>REVIEWED BY:</p> <p>DATE: 5/27/2021</p> <p>SCALE: NTC</p>	<p>SHEET 2 OF 26</p>		



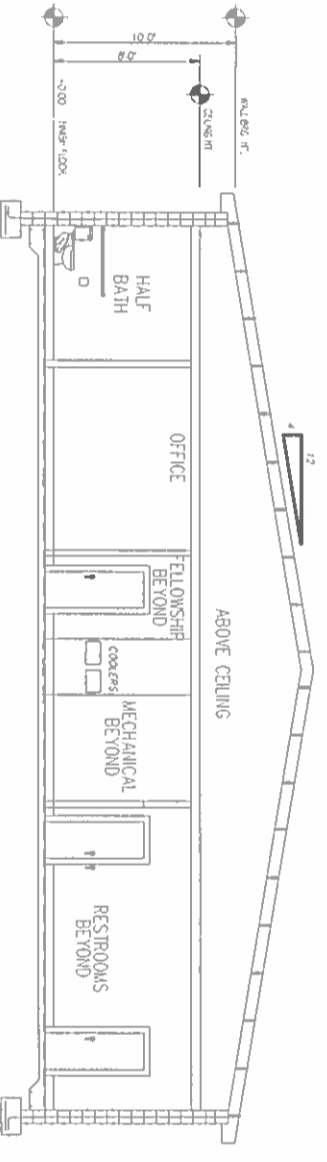




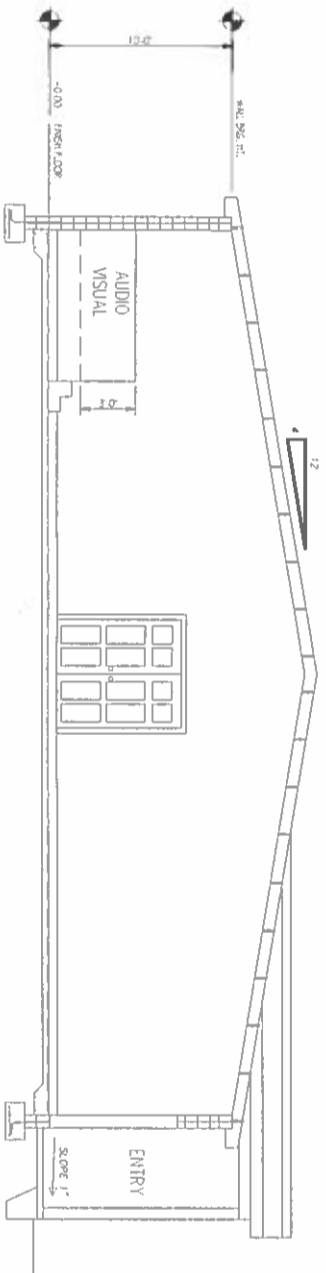
SECTION 1  
SCALE 1/4" = 1'-0"



SECTION 2  
SCALE 1/4" = 1'-0"



SECTION 3  
SCALE 1/4" = 1'-0"



SECTION 4  
SCALE 1/4" = 1'-0"



REFUGE CHURCH OF OUR LORD JESUS CHRIST  
791 WILSON STREET  
LAKE CITY, FL 32055

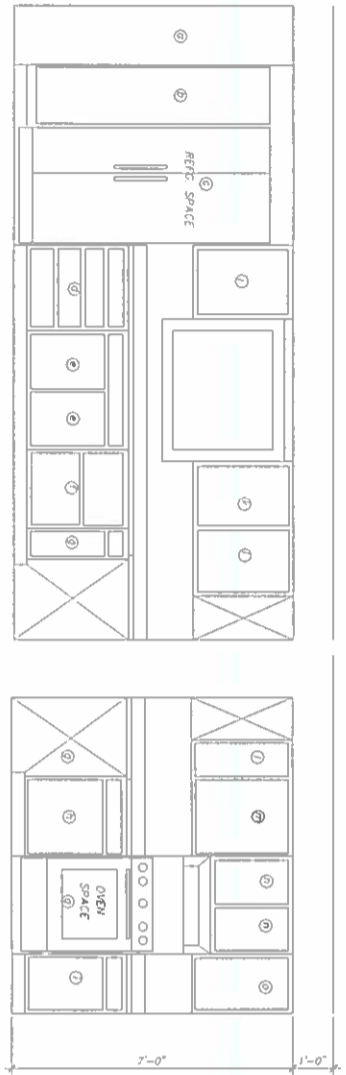
CROSS SECTIONS

PROJECT NO.	DATE	REVISION	BY
DESIGNED BY: A.G.			
DRAWN BY:			
CHECKED BY:			
REVIEWED BY:			
DATE: 3/25/2024			
SCALE: 1/4" = 1'-0"			

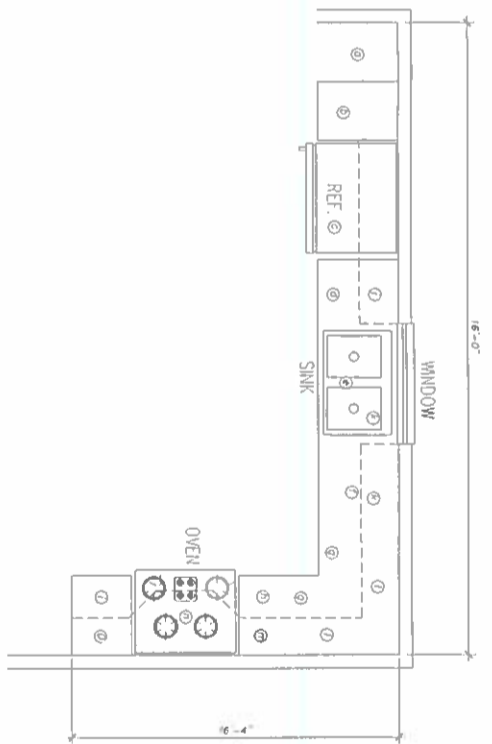
ANTHONY GEORGE JR. PE  
1130 HILLCREST DRIVE  
LAKE CITY, FL 32016  
PHONE: (850) 717-9550 FAX: (850) 717-9551  
agj@agjpe.com

A3.0

SHEET 4 OF 26

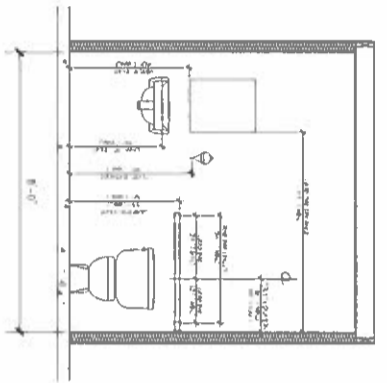
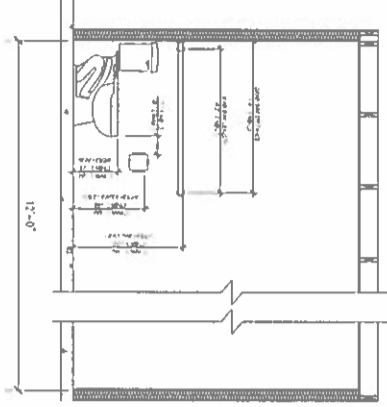


**D** SECTIONS  
SCALE 1/2" = 1'-0"

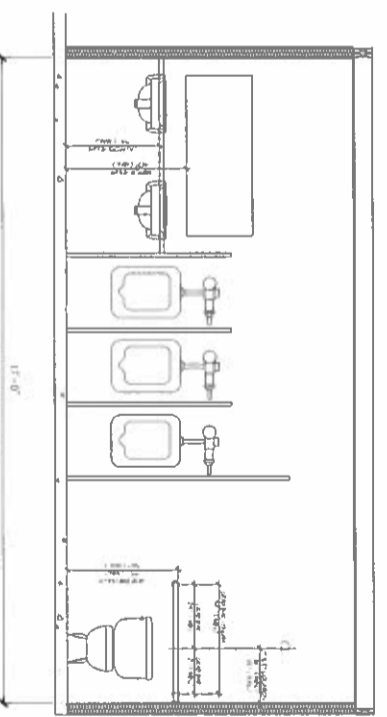
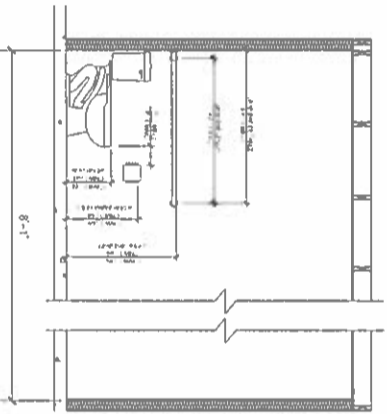


**D** PLAN  
SCALE 1/2" = 1'-0"

KITCHEN CABINET SCHEDULE	
MARK	DESCRIPTION
a	18" Empty Space
b	18" Brown Closet
c	36" Ref. Space
d	18" 4 Drawer Base
e	36" Sink Base
f	24" 2 Drawer Base
g	Lozy Sison or 36" Corner
h	24" Base
g	30" Electric Range
h	24" Base
i	18" Base
j	24" Wall
k	36" Window
l	24" Corner Wall
m	24" Wall
n	30" Hood Vent
o	18" Wall

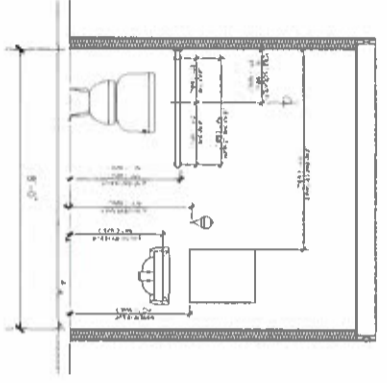
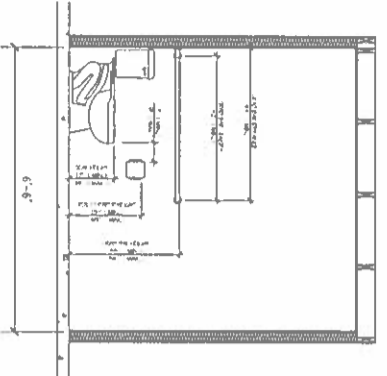


**A** SECTION  
SCALE 1/2" = 1'-0"

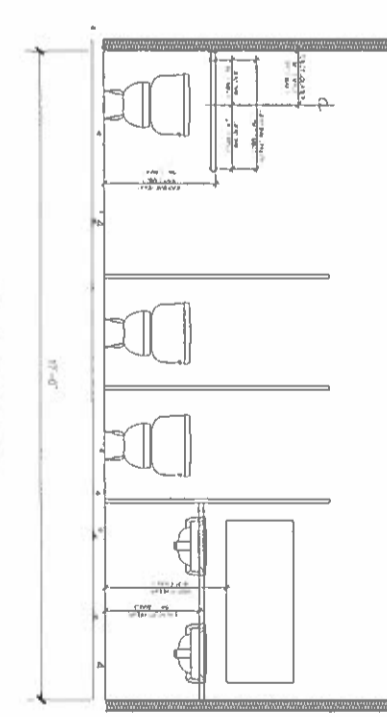
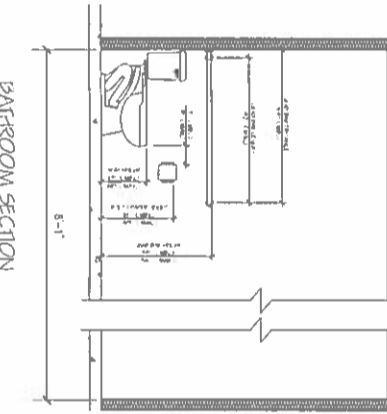


BATHROOM SECTION  
SCALE 1/2" = 1'-0"

MEN'S BATHROOM SECTION  
SCALE 1/2" = 1'-0"



**B** SECTION  
SCALE 1/2" = 1'-0"



BATHROOM SECTION  
SCALE 1/2" = 1'-0"

WOMEN'S BATHROOM SECTION  
SCALE 1/2" = 1'-0"

**C** SECTION  
SCALE 1/2" = 1'-0"

ANTHONY GEORGE JR PE  
1136 HILBURN BLVD  
ORLANDO, FL 32816  
PHONE: (408) 212-5550 FAX: (408) 212-5551  
http://ajgpyll.com

PROJECT NO.	DATE	REVISION	BY
DESIGNED BY: A G			
DRAWN BY:			
CHECKED BY:			
APPROVED BY:	3/7/2013		
SCALE:	AS SHOWN		

BUILDING SECTION  
ADA BATHROOM SECTIONS

REFUGE CHURCH OF OUR LORD JESUS CHRIST  
791 WILSON STREET  
LAKE CITY, FL 32055



A4.0  
SHEET 5 OF 26

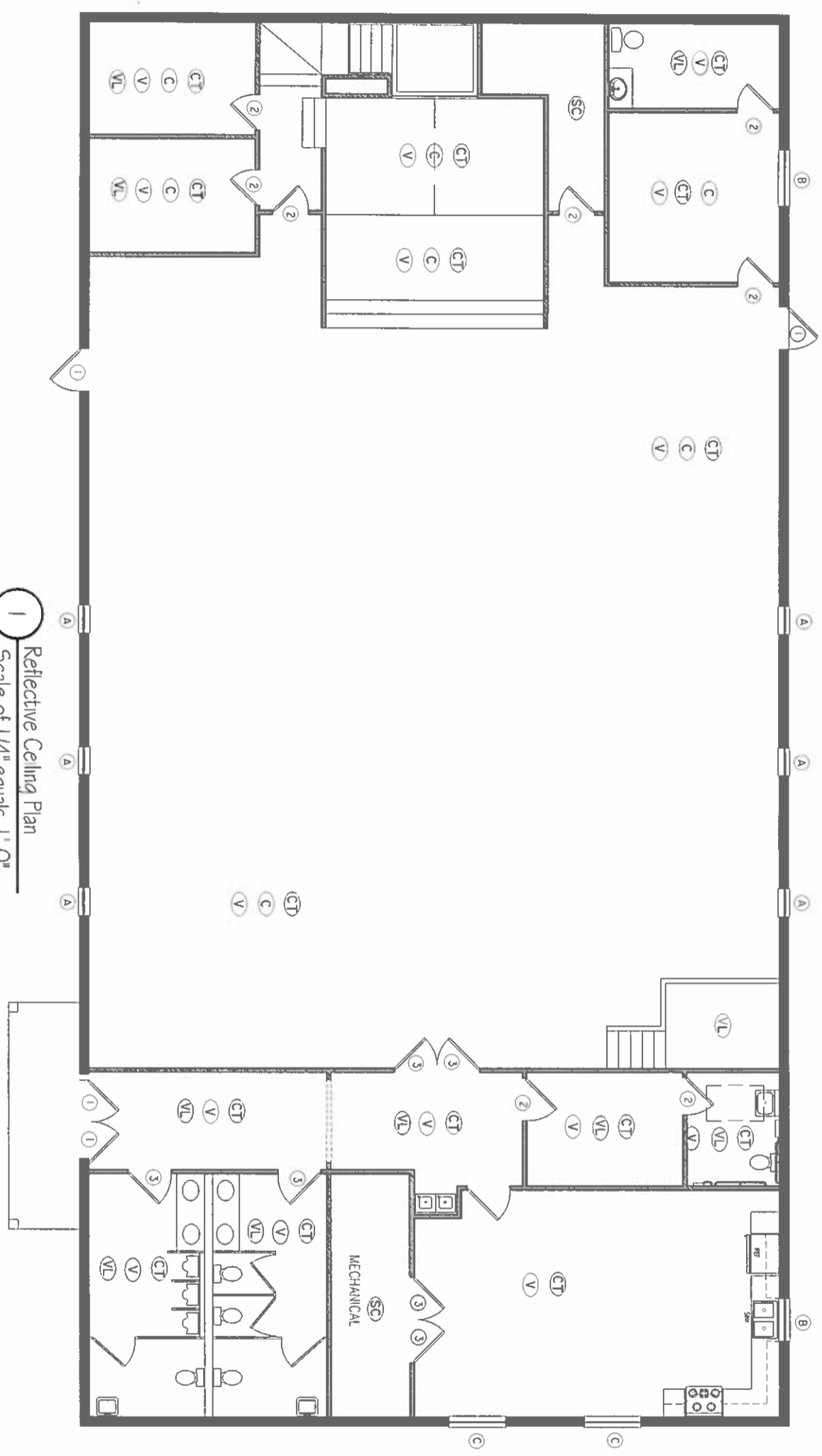
CEILING FINISH LEGEND	
2'x4' CEILING TILE	CT

FLOOR FINISH LEGEND	
FLOOR FINISH LEGEND	C
CARPET	C
VINYL LINOLEUM	VL
SEALED CONCRETE WITH POLISH	SC

FINISH SCHEDULE		
EXTERIOR	PLASTER	P
INTERIOR	1/2" DRYWALL	D
BASEBOARD	6" VINYL	V

WINDOW SCHEDULE			
MARK	SIZE	TYPE	
A	20X70	STAIN GLASS	
B	40X30	FIXED GLASS	
C	40X30	FIXED GLASS	

DOOR SCHEDULE			
MARK	SIZE	TYPE	LOCKSET
1	3068	WOOD	LEVER WITH AUTO DOOR CLOSURE
2	2868	WOOD	LEVER
3	3068	WOOD	LEVER



1 Reflective Ceiling Plan  
Scale of 1/4" equals 1'-0"



REFUGES CHURCH OF OUR LORD JESUS CHRIST  
791 WILSON STREET  
LAKE CITY, FL 32055

REFLECTIVE CEILING PLAN

PROJECT NO.	DATE	REVISION	BY
133			
DRAWN BY			
CHECKED BY			
REVIEWED BY			
DATE	3/5/2021		
SCALE	NYS		

ANTHONY GEORGE JR PE  
133 WILSON BLVD  
LAKE CITY, FL 32055  
PH: (904) 712-5050 FAX: (904) 712-5051  
http://www.ahgco.com

DATE PLOTTED: 3/5/21  
SHEET 6 OF 25  
A5.0





SCHEMATIC DIAGRAM SYMBOLS (PER IEEE STD 315-1975 REAF 1993)

	CONDUCTORS CONNECTED
	CONDUCTORS NOT CONNECTED
	TERMINAL POINT FOR OUTGOING CONDUCTORS, WITH IDENTIFICATION
	TERMINAL POINT FOR OUTGOING CONDUCTORS, WITH IDENTIFICATION
	MAGNETIC-ONLY CIRCUIT BREAKER (MOP), WITH CURRENT RATING
	CIRCUIT BREAKER, THERMAL-MAGNETIC UNLESS OTHERWISE NOTED, WITH FRAME SIZE AND TRIP RATING
	FUSE WITH SIZE AND OPTIONAL IDENTIFICATION
	DISCONNECT SWITCH RATING OPTIONAL
	DISCONNECT SWITCH RATING 30 AMP, 600V RATED UNLESS OTHERWISE NOTED
	RISE DISCONNECT SWITCH RATING OPTIONAL
	RISE DISCONNECT SWITCH RATING 30 AMP, 600V RATED UNLESS OTHERWISE NOTED
	MOTOR (HP AS SHOWN, PHASES AS REQUIRED)
	MOTOR STARTED COIL
	MOTOR CONTACT
	THERMAL MOTOR OVERLOAD
	MOTOR SPACE HEATER
	LIMIT SWITCH NORMALLY CLOSED AND NORMALLY OPEN
	PRESSURE SWITCH NORMALLY CLOSED AND NORMALLY OPEN
	TEMPERATURE SWITCH NORMALLY CLOSED AND NORMALLY OPEN
	FLOW SWITCH NORMALLY CLOSED AND NORMALLY OPEN
	LEVEL SWITCH NORMALLY CLOSED AND NORMALLY OPEN
	PROXIMITY SWITCH NORMALLY CLOSED AND NORMALLY OPEN
	PHOTOCONDUCTOR SWITCH NORMALLY CLOSED AND NORMALLY OPEN
	SOLENOID VALVE
	MOMENTARY PROHIBITION NORMALLY CLOSED AND NORMALLY OPEN
	SELECTOR SWITCH NORMALLY CLOSED AND NORMALLY OPEN
	TIME DELAY SWITCH NORMALLY CLOSED AND NORMALLY OPEN
	PILOT LIGHT X = LENS COLOR
	CONTROL RELAY
	CONTROL RELAY NORMALLY CLOSED AND NORMALLY OPEN
	ALARM LIGHT
	ALARM HORN
	CURRENT TRANSFORMER PRIMARY/SECONDARY TURNS RATIO AS SHOWN

ONE LINE DIAGRAM SYMBOLS (PER IEEE STD 315-1975 REAF 1993)

	LOW VOLTAGE POWER CIRCUIT BREAKER, DRAWOUT TYPE, FRAME SIZE (F) AND TRIP RATING (T) SHOWN
	LOW VOLTAGE POWER CIRCUIT BREAKER, DRAWOUT TYPE, WITH IDENTIFICATION
	NON-DRAWOUT TYPE, WITH CURRENT RATING
	MAGNETIC-ONLY CIRCUIT BREAKER (MOP), DRAWOUT TYPE, WITH CURRENT RATING
	LIGHTNING ARRESTER AND GROUND
	DISCONNECT OR ISOLATING SWITCH
	DISCONNECT OR ISOLATING SWITCH, RATING SHOWN
	FUSED SWITCH
	FUSED SWITCH, RATING SHOWN
	POWER TRANSFORMER, PRIMARY & SECONDARY VOLTAGES, KVA, SIZE SHOWN
	CURRENT TRANSFORMER, RATIO SHOWN (A) INDICATES NO. OF CT'S
	METER
	METER, WITH IDENTIFICATION
	METER, WITH IDENTIFICATION AND UNITS
	MOTOR (HP AS SHOWN, PHASES AS REQUIRED)
	GENERATOR
	GENERATOR, WITH IDENTIFICATION
	GENERATOR, WITH IDENTIFICATION AND STEP NUMBER FOR COMPARTMENT IDENTIFICATION
	MANUAL TRANSFER SWITCH
	AUTOMATIC TRANSFER SWITCH
	GENERATOR RECEPTACLE
	CABLE TIE
	CONTROL CABLE
	SHIELDED CONTROL CABLE
	RACEWAY OR WIRING SYSTEM ABOVE FLOOR LEVEL, BELOW CEILING, HIDDEN OR EXISTING CABLE/CONDUIT (UNLESS OTHERWISE NOTED)
	RACEWAY OR WIRING SYSTEM ABOVE FLOOR LEVEL, ABOVE CEILING, HIDDEN OR EXISTING CABLE/CONDUIT (UNLESS OTHERWISE NOTED)
	ONE LINE DIAGRAM EQUIPMENT ENCLOSURE (UNLESS OTHERWISE NOTED)
	HOME RUN - SEE PARALLEL/BOUNDED RACEWAY SCHEDULE FOR CIRCUIT IDENTIFICATION

GENERAL ABBREVIATIONS

AR	ALARM RELAY	MA	MOTOR MOTOR
AS	ALARM SELECTOR SWITCH	MB	MOTOR BREAKER
AT	ALARM TROUBLE	MC	MOTOR CONTROL CENTER
AV	ALARM VIBRATION	MD	MOTOR DRIVE
AW	ALARM WINDING	ME	MOTOR ENCLOSURE
AX	ALARM X-RAY	MF	MOTOR FRAME
AY	ALARM YIELD	MG	MOTOR GEAR
AZ	ALARM ZONE	MH	MOTOR HOUSING
BA	BASE	MI	MOTOR INSULATION
BB	BASE BOARD	MJ	MOTOR JUNCTION
BC	BASE CONDUCTOR	MK	MOTOR KICKER
BD	BASE DISTRIBUTION	ML	MOTOR LOAD
BE	BASE ELECTRICAL	MM	MOTOR MOUNTING
BF	BASE FLOOR	MN	MOTOR NAMEPLATE
BG	BASE GROUND	MO	MOTOR OIL
BH	BASE HANGING	MP	MOTOR PUMP
BI	BASE IDENTIFICATION	MQ	MOTOR QUANTITY
BJ	BASE JUNCTION	MR	MOTOR RECEPTACLE
BK	BASE KICKER	MS	MOTOR SCHEDULE
BL	BASE LOAD	MT	MOTOR TERMINAL
BM	BASE MOUNTING	MU	MOTOR UNIT
BN	BASE NAMEPLATE	MV	MOTOR VIBRATION
BO	BASE OIL	MW	MOTOR WINDING
BP	BASE PUMP	MX	MOTOR X-RAY
BQ	BASE QUANTITY	MY	MOTOR YIELD
BR	BASE RECEPTACLE	MZ	MOTOR ZONE
BS	BASE SCHEDULE	NA	NOT APPLICABLE
BT	BASE TERMINAL	NB	NOT BUILT
BU	BASE UNIT	NC	NOT CONNECTED
BV	BASE VIBRATION	ND	NOT DRAWN
BW	BASE WINDING	NE	NOT ESTIMATED
BX	BASE X-RAY	NF	NOT FIELD
BY	BASE YIELD	NG	NOT GROUND
BZ	BASE ZONE	NH	NOT HANGING
CA	CABLE	NI	NOT IDENTIFIED
CB	CABLE BOX	NJ	NOT JUNCTION
CC	CABLE CONTROL	NK	NOT KICKER
CD	CABLE DRIVE	NL	NOT LOAD
CE	CABLE ENCLOSURE	NM	NOT MOUNTING
CF	CABLE FLOOR	NO	NOT OIL
CG	CABLE GEAR	NP	NOT PUMP
CH	CABLE HOUSING	NQ	NOT QUANTITY
CI	CABLE IDENTIFICATION	NR	NOT RECEPTACLE
CJ	CABLE JUNCTION	NS	NOT SCHEDULE
CK	CABLE KICKER	NT	NOT TERMINAL
CL	CABLE LOAD	NU	NOT UNIT
CM	CABLE MOUNTING	NV	NOT VIBRATION
CN	CABLE NAMEPLATE	NW	NOT WINDING
CO	CABLE OIL	NX	NOT X-RAY
CP	CABLE PUMP	NY	NOT YIELD
CQ	CABLE QUANTITY	NZ	NOT ZONE
CR	CABLE RECEPTACLE	OA	OVERHEAD
CS	CABLE SCHEDULE	OB	OVERHEAD BOX
CT	CABLE TERMINAL	OC	OVERHEAD CONDUIT
CU	CABLE UNIT	OD	OVERHEAD DUCT
CV	CABLE VIBRATION	OE	OVERHEAD ELECTRICAL
CW	CABLE WINDING	OF	OVERHEAD FLOOR
CX	CABLE X-RAY	OG	OVERHEAD GROUND
CY	CABLE YIELD	OH	OVERHEAD HANGING
CZ	CABLE ZONE	OI	OVERHEAD IDENTIFICATION
DA	DUCT	OJ	OVERHEAD JUNCTION
DB	DUCT BANK	OK	OVERHEAD KICKER
DC	DUCT CONTROL	OL	OVERHEAD LOAD
DD	DUCT DRIVE	OM	OVERHEAD MOUNTING
DE	DUCT ENCLOSURE	ON	OVERHEAD NAMEPLATE
DF	DUCT FLOOR	OO	OVERHEAD OIL
DG	DUCT GEAR	OP	OVERHEAD PUMP
DH	DUCT HOUSING	OQ	OVERHEAD QUANTITY
DI	DUCT IDENTIFICATION	OR	OVERHEAD RECEPTACLE
DJ	DUCT JUNCTION	OS	OVERHEAD SCHEDULE
DK	DUCT KICKER	OT	OVERHEAD TERMINAL
DL	DUCT LOAD	OU	OVERHEAD UNIT
DM	DUCT MOUNTING	OV	OVERHEAD VIBRATION
DN	DUCT NAMEPLATE	OW	OVERHEAD WINDING
DO	DUCT OIL	OX	OVERHEAD X-RAY
DP	DUCT PUMP	OY	OVERHEAD YIELD
DQ	DUCT QUANTITY	OZ	OVERHEAD ZONE
DR	DUCT RECEPTACLE	PA	PANEL
DS	DUCT SCHEDULE	PB	PANEL BOX
DT	DUCT TERMINAL	PC	PANEL CONTROL
DU	DUCT UNIT	PD	PANEL DRIVE
DV	DUCT VIBRATION	PE	PANEL ENCLOSURE
DW	DUCT WINDING	PF	PANEL FLOOR
DX	DUCT X-RAY	PG	PANEL GEAR
DY	DUCT YIELD	PH	PANEL HOUSING
DZ	DUCT ZONE	PI	PANEL IDENTIFICATION
EA	ELECTRICAL	PJ	PANEL JUNCTION
EB	ELECTRICAL BANK	PK	PANEL KICKER
EC	ELECTRICAL CONTROL	PL	PANEL LOAD
ED	ELECTRICAL DRIVE	PM	PANEL MOUNTING
EE	ELECTRICAL ENCLOSURE	PN	PANEL NAMEPLATE
EF	ELECTRICAL FLOOR	PO	PANEL OIL
EG	ELECTRICAL GEAR	PP	PANEL PUMP
EH	ELECTRICAL HOUSING	PQ	PANEL QUANTITY
EI	ELECTRICAL IDENTIFICATION	PR	PANEL RECEPTACLE
EJ	ELECTRICAL JUNCTION	PS	PANEL SCHEDULE
EK	ELECTRICAL KICKER	PT	PANEL TERMINAL
EL	ELECTRICAL LOAD	PU	PANEL UNIT
EM	ELECTRICAL MOUNTING	PV	PANEL VIBRATION
EN	ELECTRICAL NAMEPLATE	PW	PANEL WINDING
EO	ELECTRICAL OIL	PX	PANEL X-RAY
EP	ELECTRICAL PUMP	PY	PANEL YIELD
EQ	ELECTRICAL QUANTITY	PZ	PANEL ZONE
ER	ELECTRICAL RECEPTACLE	QA	QUALITY ASSURANCE
ES	ELECTRICAL SCHEDULE	QB	QUALITY ASSURANCE BOX
ET	ELECTRICAL TERMINAL	QC	QUALITY ASSURANCE CONTROL
EU	ELECTRICAL UNIT	QD	QUALITY ASSURANCE DRIVE
EV	ELECTRICAL VIBRATION	QE	QUALITY ASSURANCE ENCLOSURE
EW	ELECTRICAL WINDING	QF	QUALITY ASSURANCE FLOOR
EX	ELECTRICAL X-RAY	QG	QUALITY ASSURANCE GEAR
EY	ELECTRICAL YIELD	QH	QUALITY ASSURANCE HOUSING
EZ	ELECTRICAL ZONE	QI	QUALITY ASSURANCE IDENTIFICATION
FA	FAN	QJ	QUALITY ASSURANCE JUNCTION
FB	FAN BANK	QK	QUALITY ASSURANCE KICKER
FC	FAN CONTROL	QL	QUALITY ASSURANCE LOAD
FD	FAN DRIVE	QM	QUALITY ASSURANCE MOUNTING
FE	FAN ENCLOSURE	QN	QUALITY ASSURANCE NAMEPLATE
FF	FAN FLOOR	QO	QUALITY ASSURANCE OIL
FG	FAN GEAR	QP	QUALITY ASSURANCE PUMP
FH	FAN HOUSING	QQ	QUALITY ASSURANCE QUANTITY
FI	FAN IDENTIFICATION	QR	QUALITY ASSURANCE RECEPTACLE
FJ	FAN JUNCTION	QS	QUALITY ASSURANCE SCHEDULE
FK	FAN KICKER	QT	QUALITY ASSURANCE TERMINAL
FL	FAN LOAD	QU	QUALITY ASSURANCE UNIT
FM	FAN MOUNTING	QV	QUALITY ASSURANCE VIBRATION
FN	FAN NAMEPLATE	QW	QUALITY ASSURANCE WINDING
FO	FAN OIL	QX	QUALITY ASSURANCE X-RAY
FP	FAN PUMP	QY	QUALITY ASSURANCE YIELD
FQ	FAN QUANTITY	QZ	QUALITY ASSURANCE ZONE
FR	FAN RECEPTACLE	RA	RACEWAY
FS	FAN SCHEDULE	RB	RACEWAY BOX
FT	FAN TERMINAL	RC	RACEWAY CONTROL
FU	FAN UNIT	RD	RACEWAY DRIVE
FV	FAN VIBRATION	RE	RACEWAY ENCLOSURE
FW	FAN WINDING	RF	RACEWAY FLOOR
FX	FAN X-RAY	RG	RACEWAY GEAR
FY	FAN YIELD	RH	RACEWAY HOUSING
FZ	FAN ZONE	RI	RACEWAY IDENTIFICATION
GA	GENERATOR	RJ	RACEWAY JUNCTION
GB	GENERATOR BANK	RK	RACEWAY KICKER
GC	GENERATOR CONTROL	RL	RACEWAY LOAD
GD	GENERATOR DRIVE	RM	RACEWAY MOUNTING
GE	GENERATOR ENCLOSURE	RN	RACEWAY NAMEPLATE
GF	GENERATOR FLOOR	RO	RACEWAY OIL
GG	GENERATOR GEAR	RP	RACEWAY PUMP
GH	GENERATOR HOUSING	RQ	RACEWAY QUANTITY
GI	GENERATOR IDENTIFICATION	RR	RACEWAY RECEPTACLE
GJ	GENERATOR JUNCTION	RS	RACEWAY SCHEDULE
GK	GENERATOR KICKER	RT	RACEWAY TERMINAL
GL	GENERATOR LOAD	RU	RACEWAY UNIT
GM	GENERATOR MOUNTING	RV	RACEWAY VIBRATION
GN	GENERATOR NAMEPLATE	RW	RACEWAY WINDING
GO	GENERATOR OIL	RX	RACEWAY X-RAY
GP	GENERATOR PUMP	RY	RACEWAY YIELD
GQ	GENERATOR QUANTITY	RZ	RACEWAY ZONE
GR	GENERATOR RECEPTACLE	SA	SCHEDULE
GS	GENERATOR SCHEDULE	SB	SCHEDULE BOX
GT	GENERATOR TERMINAL	SC	SCHEDULE CONTROL
GU	GENERATOR UNIT	SD	SCHEDULE DRIVE
GV	GENERATOR VIBRATION	SE	SCHEDULE ENCLOSURE
GW	GENERATOR WINDING	SF	SCHEDULE FLOOR
GX	GENERATOR X-RAY	SG	SCHEDULE GEAR
GY	GENERATOR YIELD	SH	SCHEDULE HOUSING
GZ	GENERATOR ZONE	SI	SCHEDULE IDENTIFICATION
HA	HANGING	SJ	SCHEDULE JUNCTION
HB	HANGING BOX	SK	SCHEDULE KICKER
HC	HANGING CONTROL	SL	SCHEDULE LOAD
HD	HANGING DRIVE	SM	SCHEDULE MOUNTING
HE	HANGING ENCLOSURE	SN	SCHEDULE NAMEPLATE
HF	HANGING FLOOR	SO	SCHEDULE OIL
HG	HANGING GEAR	SP	SCHEDULE PUMP
HH	HANGING HOUSING	SQ	SCHEDULE QUANTITY
HI	HANGING IDENTIFICATION	SR	SCHEDULE RECEPTACLE
HJ	HANGING JUNCTION	SS	SCHEDULE SCHEDULE
HK	HANGING KICKER	ST	SCHEDULE TERMINAL
HL	HANGING LOAD	SU	SCHEDULE UNIT
HM	HANGING MOUNTING	SV	SCHEDULE VIBRATION
HN	HANGING NAMEPLATE	SW	SCHEDULE WINDING
HO	HANGING OIL	SW	SCHEDULE WINDING
HP	HANGING PUMP	TX	TERMINAL
HQ	HANGING QUANTITY	TY	TERMINAL YIELD
HR	HANGING RECEPTACLE	TZ	TERMINAL ZONE
HS	HANGING SCHEDULE	UA	UNDERGROUND
HT	HANGING TERMINAL	UB	UNDERGROUND BOX
HU	HANGING UNIT	UC	UNDERGROUND CONTROL
HV	HANGING VIBRATION	UD	UNDERGROUND DRIVE
HW	HANGING WINDING	UE	UNDERGROUND ENCLOSURE
HX	HANGING X-RAY	UF	UNDERGROUND FLOOR
HY	HANGING YIELD	UG	UNDERGROUND GEAR
HZ	HANGING ZONE	UH	UNDERGROUND HOUSING
IA	IDENTIFICATION	UI	UNDERGROUND IDENTIFICATION
IB	IDENTIFICATION BOX	UJ	UNDERGROUND JUNCTION
IC	IDENTIFICATION CONTROL	UK	UNDERGROUND KICKER
ID	IDENTIFICATION DRIVE	UL	UNDERGROUND LOAD
IE	IDENTIFICATION ENCLOSURE	UM	UNDERGROUND MOUNTING
IF	IDENTIFICATION FLOOR	UN	UNDERGROUND NAMEPLATE
IG	IDENTIFICATION GEAR	UO	UNDERGROUND OIL
IH	IDENTIFICATION HOUSING	UP	UNDERGROUND PUMP
II	IDENTIFICATION IDENTIFICATION	UQ	UNDERGROUND QUANTITY
IJ	IDENTIFICATION JUNCTION	UR	UNDERGROUND RECEPTACLE
IK	IDENTIFICATION KICKER	US	UNDERGROUND SCHEDULE
IL	IDENTIFICATION LOAD	UT	UNDERGROUND TERMINAL
IM	IDENTIFICATION MOUNTING	UV	UNDERGROUND UNIT
IN	IDENTIFICATION NAMEPLATE	UW	UNDERGROUND VIBRATION
IO	IDENTIFICATION OIL	UX	UNDERGROUND WINDING
IP	IDENTIFICATION PUMP	UY	UNDERGROUND X-RAY
IQ	IDENTIFICATION QUANTITY	UZ	UNDERGROUND YIELD
IR	IDENTIFICATION RECEPTACLE	VA	VARIABLE
IS	IDENTIFICATION SCHEDULE	VB	VARIABLE BOX
IT	IDENTIFICATION TERMINAL	VC	VARIABLE CONTROL
IU	IDENTIFICATION UNIT	VD	VARIABLE DRIVE
IV	IDENTIFICATION VIBRATION	VE	VARIABLE ENCLOSURE
IW	IDENTIFICATION WINDING	VF	VARIABLE FLOOR
IX	IDENTIFICATION X-RAY	VG	VARIABLE GEAR
IY	IDENTIFICATION YIELD	VH	VARIABLE HOUSING
IZ	IDENTIFICATION ZONE	VI	VARIABLE IDENTIFICATION
JA	JUNCTION	VJ	VARIABLE JUNCTION
JB	JUNCTION BOX	VK	VARIABLE KICKER
JC	JUNCTION CONTROL	VL	VARIABLE LOAD
JD	JUNCTION DRIVE	VM	VARIABLE MOUNTING
JE	JUNCTION ENCLOSURE	VN	VARIABLE NAMEPLATE
JF	JUNCTION FLOOR	VO	VARIABLE OIL
JG	JUNCTION GEAR	VP	VARIABLE PUMP
JH	JUNCTION HOUSING	VQ	VARIABLE QUANTITY
JI	JUNCTION IDENTIFICATION	VR	VARIABLE RECEPTACLE
JJ	JUNCTION JUNCTION	VS	VARIABLE SCHEDULE
JK	JUNCTION KICKER	VT	VARIABLE TERMINAL
JL	JUNCTION LOAD	VU	VARIABLE UNIT
JM	JUNCTION MOUNTING	VV	VARIABLE VIBRATION
JN	JUNCTION NAMEPLATE	VW	VARIABLE WINDING
JO	JUNCTION OIL	VX	VARIABLE X-RAY
JP	JUNCTION PUMP	VY	VARIABLE YIELD
JQ	JUNCTION QUANTITY	VZ	VARIABLE ZONE
JR	JUNCTION RECEPTACLE		

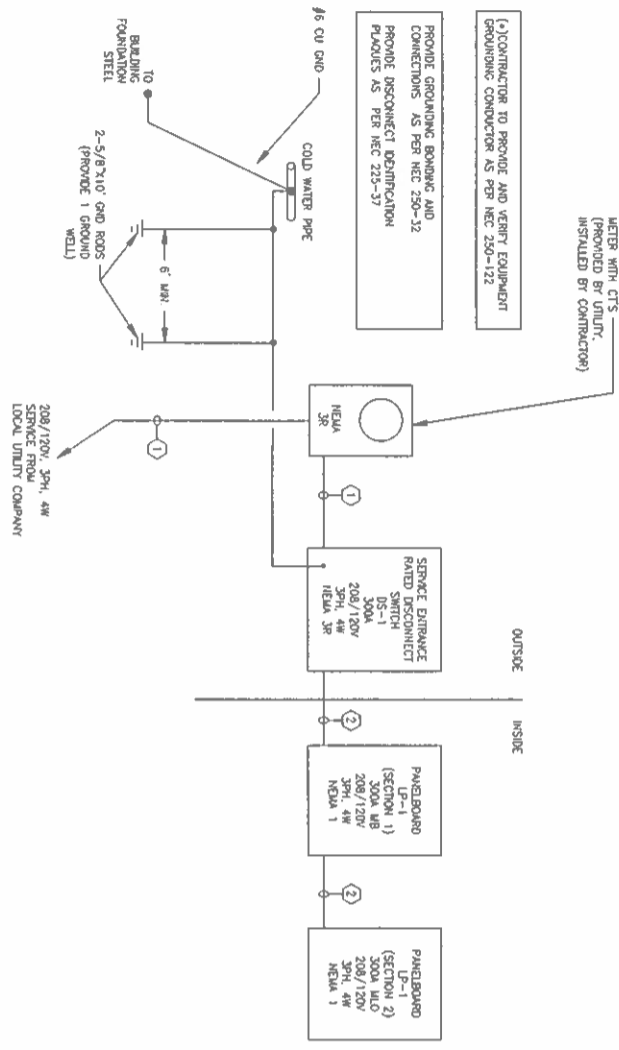
SHORT CIRCUIT CALCULATIONS (PAGE C OF PANELBOARD LP-1)  
 SHORT CIRCUIT CURRENT AT THE SECONDARY OF UTILITY TRANSFORMER:  
 111.2 AMP / 0.975 (IMPEDANCE OF THE TRANSFORMER) = 133.3 AMP  
 PANELBOARD SHORT CIRCUIT RATING: 22,000 AMP  
 CONCLUSION: PANELBOARD CAN WITHSTAND AVAILABLE SHORT CIRCUIT CURRENT.

Voltage drop calculation for Service Conductors

Ckt From	Ckt To	No. of Conductors	Length (ft)	Conductor Size	Resistance (ohm/ft)	Voltage Drop (V)	% Drop
UTILITY TR	DS-1	2	300	3/4"	0.0002	0.18	0.48%
		TOTAL VOLT DROP =				0.18	0.48%

CONDUCTOR/CABLE SCHEDULE

①	3 - 350KCMIL IN 25° C
②	1 - 350KCMIL & 1 # 4 GND IN 25° C



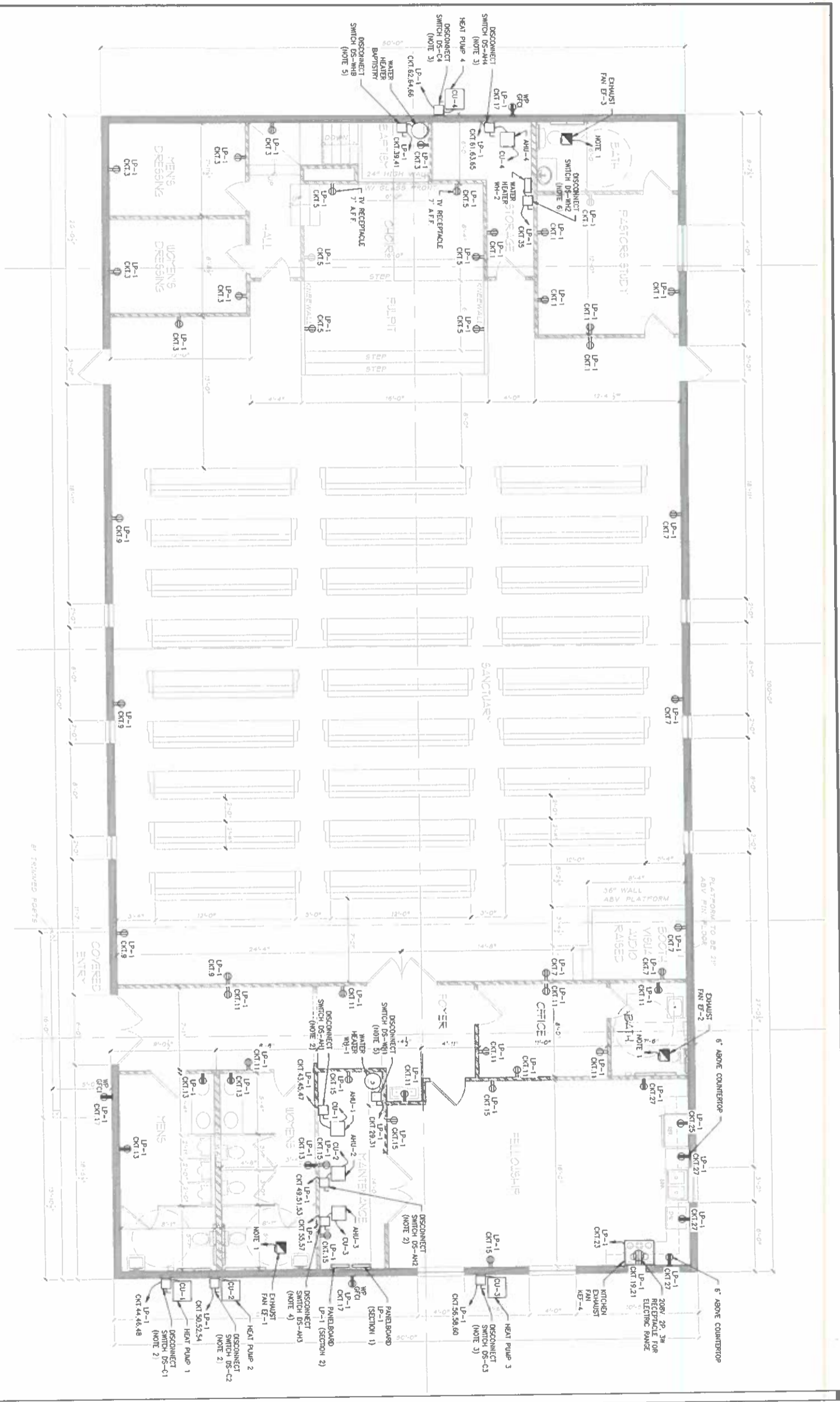
1 ELECTRICAL RISER DIAGRAM

PANELBOARD (SECTION 1) LOCATED IN MAINTENANCE ROOM

Ckt. No.	Description	Type	Pole	Phase Loads (AMP)			Pole	Type	Description	Ckt. No.
				A	B	C				
1	RESTROOM STORAGE	20	1	10.5	5.1		1	20	RESTROOM STORAGE ROOM/RESTROOM	2
3	MEN'S DRESSING ROOM	20	1	10.5	5.2		1	20	MEN'S AND WOMAN'S DRESSING ROOM/AREX LINDING AND FAU DT-3	4
5	WOMEN'S DRESSING ROOM	20	1			9.0	4.3	20	WOMEN'S DRESSING ROOM/AREX LINDING AND FAU DT-3	6
7	SANITARY ROOM (LEFT)	20	1	7.3	8.5		1	20	SANITARY ROOM (LEFT) LIGHTING	8
9	SANITARY ROOM (RIGHT)	20	1			6.0	8.8	1	SANITARY ROOM (RIGHT) LIGHTING	10
11	FOYER, OFFICE/RECEPTION	20	1			12.0	3.8	1	FOYER, OFFICE/RECEPTION ROOM LIGHTING AND	12
13	MEN'S RESTROOM AND WOMAN'S RESTROOM	20	1	6.0	4.2		1	20	MEN'S AND WOMAN'S RESTROOMS LIGHTING AND EXHAUST FAN LP-1	14
15	RESTROOM LIGHTING	20	1			9.0	3.2	1	RESTROOM LIGHTING AND EXHAUST FAN LP-1	16
17	EXTENSION LIGHTING	20	1			3.0	4.0	1	EXTENSION LIGHTING	18
18	EXTENSION LIGHTING	20	1			2.0	4.0	1	EXTENSION LIGHTING	20
21	KITCHEN RANGE RECEPTACLE	40	2	20.0				1	KITCHEN RANGE RECEPTACLE	22
23	MITCHEN EXHAUST FAN VFD-4	20	1			20.0		1	MITCHEN EXHAUST FAN VFD-4	24
25	RESTROOM RECEPTACLE	20	1	2.0				1	RESTROOM RECEPTACLE	26
27	FELLOWSHIP (KITCHEN) RECEPTACLE	20	1			6.0		1	FELLOWSHIP (KITCHEN) RECEPTACLE	28
28	WATER HEATER WH-1	40	2			28.8		1	WATER HEATER WH-1	30
31	SPACE					28.8		1	SPACE	32
33	WATER HEATER WH-2	40	2			28.8		1	WATER HEATER WH-2	34
35	SPACE					28.8		1	SPACE	36
37	WATER HEATER BURNER WH-B	40	2			28.8		1	WATER HEATER BURNER WH-B	38
39	SPACE					28.8		1	SPACE	40
41	CONNECTED LOAD PHASE TOTALS (AMP)			92.7		97.3			CONNECTED LOAD PHASE TOTALS (AMP)	42

PANELBOARD (SECTION 2) LOCATED IN MAINTENANCE ROOM

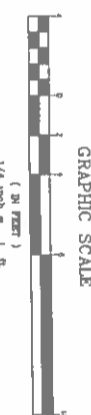
Ckt. No.	Description	Type	Pole	Phase Loads (AMP)			Pole	Type	Description	Ckt. No.
				A	B	C				
43	HEAT PUMP CH-1	30	3	30.0	21.0		3	40	HEAT PUMP CH-1	44
45	HEAT PUMP CH-2	30	3	30.0	21.0		3	40	HEAT PUMP CH-2	46
47	HEAT PUMP CH-3	30	3	30.0	21.0		3	40	HEAT PUMP CH-3	48
51	HEAT PUMP CH-4	30	3	30.0	21.0		3	40	HEAT PUMP CH-4	50
53	HEAT PUMP CH-5	30	3	30.0	21.0		3	40	HEAT PUMP CH-5	52
55	HEAT PUMP CH-6	30	3	30.0	21.0		3	40	HEAT PUMP CH-6	54
57	HEAT PUMP CH-7	30	3	30.0	21.0		3	40	HEAT PUMP CH-7	56
59	HEAT PUMP CH-8	30	3	30.0	21.0		3	40	HEAT PUMP CH-8	58
61	HEAT PUMP CH-9	30	3	30.0	21.0		3	40	HEAT PUMP CH-9	60
63	HEAT PUMP CH-10	30	3	30.0	21.0		3	40	HEAT PUMP CH-10	62
65	HEAT PUMP CH-11	30	3	30.0	21.0		3	40	HEAT PUMP CH-11	64
67	HEAT PUMP CH-12	30	3	30.0	21.0		3	40	HEAT PUMP CH-12	66
69	HEAT PUMP CH-13	30	3	30.0	21.0		3	40	HEAT PUMP CH-13	68
71	HEAT PUMP CH-14	30	3	30.0	21.0		3	40	HEAT PUMP CH-14	70
73	HEAT PUMP CH-15	30	3	30.0	21.0		3	40	HEAT PUMP CH-15	72
75	HEAT PUMP CH-16	30	3	30.0	21.0		3	40	HEAT PUMP CH-16	74
77	HEAT PUMP CH-17	30	3	30.0	21.0		3	40	HEAT PUMP CH-17	76
79	HEAT PUMP CH-18	30	3	30.0	21.0		3	40	HEAT PUMP CH-18	78
81	HEAT PUMP CH-19	30	3	30.0	21.0		3	40	HEAT PUMP CH-19	80
83	HEAT PUMP CH-20	30	3	30.0	21.0		3	40	HEAT PUMP CH-20	82
85	HEAT PUMP CH-21	30	3	30.0	21.0		3	40	HEAT PUMP CH-21	84
87	HEAT PUMP CH-22	30	3	30.0	21.0		3	40	HEAT PUMP CH-22	86
89	HEAT PUMP CH-23	30	3	30.0	21.0		3	40	HEAT PUMP CH-23	88
91	HEAT PUMP CH-24	30	3	30.0	21.0		3	40	HEAT PUMP CH-24	90
93	HEAT PUMP CH-25	30	3	30.0	21.0		3	40	HEAT PUMP CH-25	92
95	HEAT PUMP CH-26	30	3	30.0	21.0		3	40	HEAT PUMP CH-26	94
97	HEAT PUMP CH-27	30	3	30.0	21.0		3	40	HEAT PUMP CH-27	96
99	HEAT PUMP CH-28	30	3	30.0	21.0		3	40	HEAT PUMP CH-28	98
101	HEAT PUMP CH-29	30	3	30.0	21.0		3	40	HEAT PUMP CH-29	100
103	HEAT PUMP CH-30	30	3	30.0	21.0		3	40	HEAT PUMP CH-30	102
105	HEAT PUMP CH-31	30	3	30.0	21.0		3	40	HEAT PUMP CH-31	104
107	HEAT PUMP CH-32	30	3	30.0	21.0		3	40	HEAT PUMP CH-32	106
109	HEAT PUMP CH-33	30	3	30.0	21.0		3	40	HEAT PUMP CH-33	108
111	HEAT PUMP CH-34	30	3	30.0	21.0		3	40	HEAT PUMP CH-34	110
113	HEAT PUMP CH-35	30	3	30.0	21.0		3	40	HEAT PUMP CH-35	112
115	HEAT PUMP CH-36	30	3	30.0	21.0		3	40	HEAT PUMP CH-36	114
117	HEAT PUMP CH-37	30	3	30.0	21.0		3	40	HEAT PUMP CH-37	116
119	HEAT PUMP CH-38	30	3	30.0	21.0		3	40	HEAT PUMP CH-38	118
121	HEAT PUMP CH-39	30	3	30.0	21.0		3	40	HEAT PUMP CH-39	120
123	HEAT PUMP CH-40	30	3	30.0	21.0		3	40	HEAT PUMP CH-40	122
125	HEAT PUMP CH-41	30	3	30.0	21.0		3	40	HEAT PUMP CH-41	124
127	HEAT PUMP CH-42	30	3	30.0	21.0		3	40	HEAT PUMP CH-42	126
129	HEAT PUMP CH-43	30	3	30.0	21.0		3	40	HEAT PUMP CH-43	128
131	HEAT PUMP CH-44	30	3	30.0	21.0		3	40	HEAT PUMP CH-44	130
133	HEAT PUMP CH-45	30	3	30.0	21.0		3	40	HEAT PUMP CH-45	132
135	HEAT PUMP CH-46	30	3	30.0	21.0		3	40	HEAT PUMP CH-46	134
137	HEAT PUMP CH-47	30	3	30.0	21.0		3	40	HEAT PUMP CH-47	136
139	HEAT PUMP CH-48	30	3	30.0	21.0		3	40	HEAT PUMP CH-48	138
141	HEAT PUMP CH-49	30	3	30.0	21.0		3	40	HEAT PUMP CH-49	140
143	HEAT PUMP CH-50	30	3	30.0	21.0		3	40	HEAT PUMP CH-50	142
145	HEAT PUMP CH-51	30	3	30.0	21.0		3	40	HEAT PUMP CH-51	144
147	HEAT PUMP CH-52	30	3	30.0	21.0		3	40	HEAT PUMP CH-52	146
149	HEAT PUMP CH-53	30	3	30.0	21.0		3	40	HEAT PUMP CH-53	148
151	HEAT PUMP CH-54	30	3	30.0	21.0		3	40	HEAT PUMP CH-54	150
153	HEAT PUMP CH-55	30	3	30.0	21.0		3	40	HEAT PUMP CH-55	152
155	HEAT PUMP CH-56	30	3	30.0	21.0		3	40	HEAT PUMP CH-56	154
157	HEAT PUMP CH-57	30	3	30.0	21.0		3	40	HEAT PUMP CH-57	156
159	HEAT PUMP CH-58	30	3	30.0	21.0		3	40	HEAT PUMP CH-58	158
161	HEAT PUMP CH-59	30	3	30.0	21.0		3	40	HEAT PUMP CH-59	160
163	HEAT PUMP CH-60	30	3	30.0	21.0		3	40	HEAT PUMP CH-60	162
165	HEAT PUMP CH-61	30	3	30.0	21.0		3	40	HEAT PUMP CH-61	164
167	HEAT PUMP CH-62	30	3	30.0	21.0		3	40	HEAT PUMP CH-62	166
169	HEAT PUMP CH-63	30	3	30.0	21.0		3	40	HEAT PUMP CH-63	168
171	HEAT PUMP CH-64	30	3	30.0	21.0		3	40	HEAT PUMP CH-64	170
173	HEAT PUMP CH-65	30	3	30.0	21.0		3	40	HEAT PUMP CH-65	172
175	HEAT PUMP CH-66	30	3	30.0	21.0		3	40	HEAT PUMP CH-66	174
177	HEAT PUMP CH-67	30	3	30.0	21.0		3	40	HEAT PUMP CH-67	176
179	HEAT PUMP CH-68	30	3	30.0	21.0		3	40	HEAT PUMP CH-68	178
181	HEAT PUMP CH-69	30	3	30.0	21.0		3	40	HEAT PUMP CH-69	180
183	HEAT PUMP CH-70	30	3	30.0	21.0		3	40	HEAT PUMP CH-70	182
185	HEAT PUMP CH-71	30	3	30.0	21.0		3	40	HEAT PUMP CH-71	184
187	HEAT PUMP CH-72	30	3	30.0	21.0		3	40	HEAT PUMP CH-72	186
189	HEAT PUMP CH-73	30	3	30.0	21.0		3	40	HEAT PUMP CH-73	188
191	HEAT PUMP CH-74	30	3	30.0	21.0		3	40	HEAT PUMP CH-74	190
193	HEAT PUMP CH-75	30	3	30.0	21.0		3	40	HEAT PUMP CH-75	192
195	HEAT PUMP CH-76	30	3	30.0	21.0		3	40	HEAT PUMP CH-76	194
197	HEAT PUMP CH-77	30	3	30.0	21.0		3	40	HEAT PUMP CH-77	196
199	HEAT PUMP CH-78	30	3	30.0	21.0		3	40	HEAT PUMP CH-78	198
201	HEAT PUMP CH-79	30	3	30.0	21.0		3	40	HEAT PUMP CH-79	200
203	HEAT PUMP CH-80	30	3	30.0	21.0		3	40	HEAT PUMP CH-80	202
205	HEAT PUMP CH-81	30	3	30.0	21.0		3	40	HEAT PUMP CH-81	204
207	HEAT PUMP CH-82	30	3	30.0	21.0		3	40	HEAT PUMP CH-82	206
209	HEAT PUMP CH-83	30	3	30.0	21.0		3	40	HEAT PUMP CH-83	208
211	HEAT PUMP CH-84	30	3	30.0	21.0		3	40	HEAT PUMP CH-84	



SYMBOL/TYP	RECEPTACLE SCHEDULE	VOLTAGE/AMP/PHASE	LOCATION
Ⓢ	120V, 20A, 1PH DUPLEX RECEPTACLE	120V, 20A, 1PH	WALL
Ⓢ	120V, 20A, 1PH GFCI DUPLEX RECEPTACLE	120V, 20A, 1PH	WALL
Ⓢ	208V, 40A, 3P, 1PH, 3W GFCI RECEPTACLE FOR ELECTRICAL PANEL CONNECTION	208V, 40A, 3P, 1PH	WALL

- NOTES:**
- EXHAUST FANS DF-1, DF-2, DF-3 SHALL BE CONTROLLED BY DEFACTO HP RATED TOGGLE SWITCH.
  - CONTRACTOR SHALL SUPPLY AND INSTALL 60A, 3P, 208V NON-RESET DISCONNECT SWITCHES FOR CU-1, CU-2 (IN NEUA 35 ENCLOSURE) AND CU-3, CU-4 (IN NEUA 1 ENCLOSURE) COORDINATE THE EXACT VOLTAGE/AMPERAGE/RATING WITH VENDOR SHOP DRAWINGS AND ADJUST BREAKER, DISCONNECT SWITCH AND CABLE/CONDUIT SIZE AS REQUIRED.
  - CONTRACTOR SHALL SUPPLY AND INSTALL 30A, 3P, 208V NON-RESET DISCONNECT SWITCHES FOR CU-3, CU-4 (IN NEUA 1 ENCLOSURE) AND CU-1, CU-2 (IN NEUA 1 ENCLOSURE). COORDINATE THE EXACT VOLTAGE/AMPERAGE/RATING WITH VENDOR SHOP DRAWINGS AND ADJUST BREAKER, DISCONNECT SWITCH AND CABLE/CONDUIT SIZE AS REQUIRED.
  - CONTRACTOR SHALL SUPPLY AND INSTALL 60A, 3P, 208V NON-RESET DISCONNECT SWITCH IN NEUA 1 ENCLOSURE FOR AHU-3. COORDINATE THE EXACT VOLTAGE/AMPERAGE/RATING WITH VENDOR SHOP DRAWINGS AND ADJUST BREAKER, DISCONNECT SWITCH AND CABLE/CONDUIT SIZE AS REQUIRED.
  - CONTRACTOR SHALL FURNISH AND INSTALL 60A, 3P, 208V NON-RESET DISCONNECT SWITCHES IN NEUA 1 ENCLOSURE FOR AHU-1, AHU-2 AND AHU-3. CONTRACTOR SHALL ADJUST DISCONNECT WORKING CLEARANCES.
  - CONTRACTOR SHALL FURNISH AND INSTALL 30A, 1P, 120V NON-RESET DISCONNECT SWITCH IN NEUA 1 FIELD TO AVOID INTERFERENCES WITH OTHER UTILITIES AND TO PROVIDE THE REQUIRED WORKING CLEARANCES.
  - CONTRACTOR SHALL PROVIDE AND INSTALL ALL POWER AND CONTROL CABLES/CONDUITS FOR PROPER WALK STAYED OVERHEAD BASED ON THE INSTALLED EQUIPMENT.

1 ELECTRICAL POWER PLAN  
1/4" = 1'-0"



PROJECT NO. AZ DESIGNED BY SP DRAWN BY AL CHECKED BY AL REVIEWED BY DATE 3/23/2021 SCALE AS SHOWN	DATE 4/07/2021 REVISION A ISSUED FOR REVIEW REVISION B ISSUED FOR CONSTRUCTION	BY	REFUGEE CHURCH 791 WILSON STREET LAKE CITY, FL 32055	

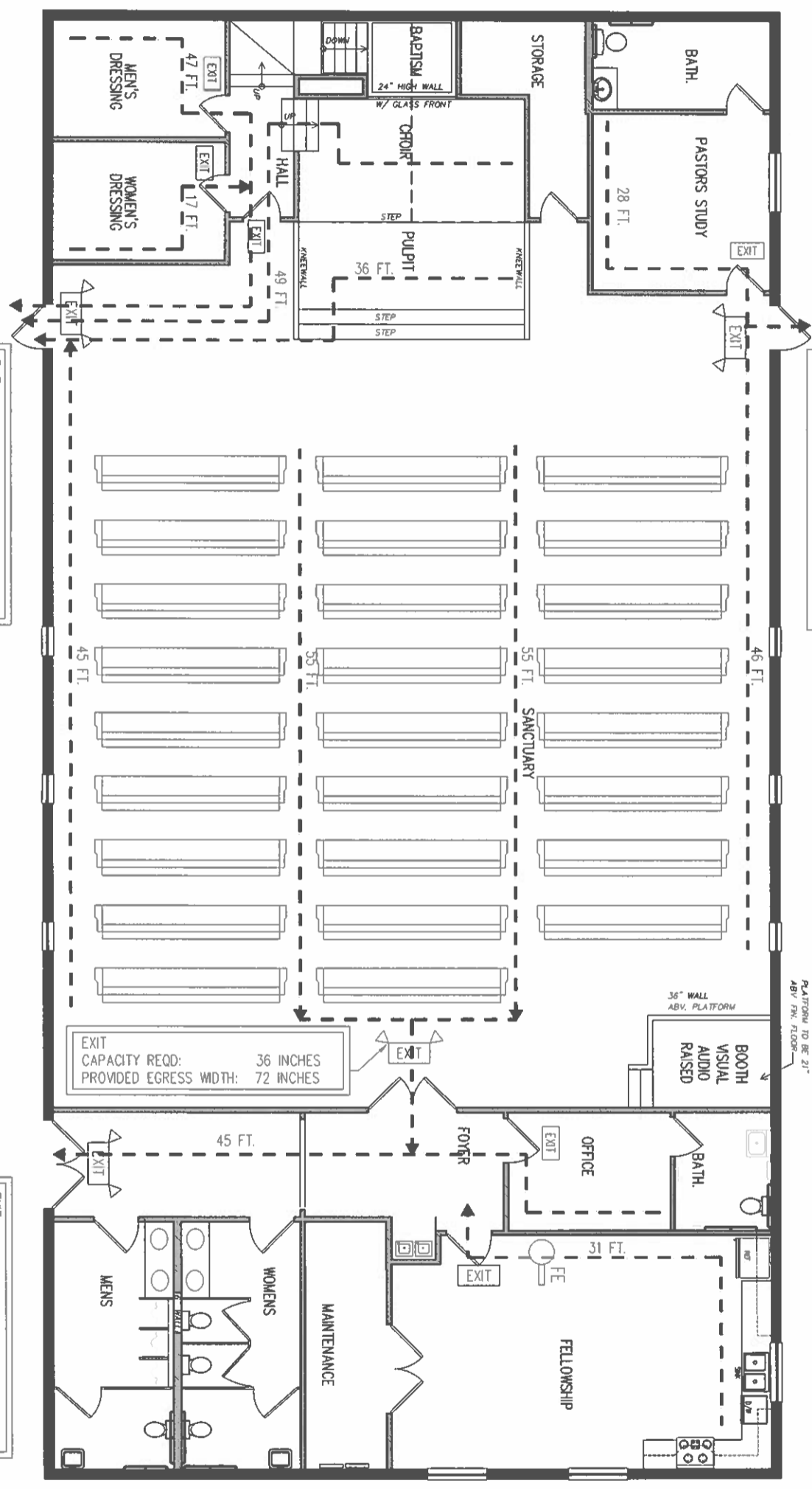
E-02  
10/22





### LIFE SAFETY CALCULATIONS

NAME	ROOM DIMENSIONS	ROOM AREA (SQ FT)	LOAD OCCUPANCY FACTOR	OCCUPANCY LOAD	MAXIMUM OCCUPANCY
SANCTUARY	51 x 48	2448	18" PER PERSON PER PEW	156.00	156.00
CHOR STAND	8 x 18	144	18" PER PERSON PER CHAIR	18.00	18.00
PULPIT	8 x 18	144	7 CHAIRS	7.00	7.00
FELLOWSHIP HALL	17 x 18	306		20.40	20.00
OCCUPANCY LOAD				201.00	
<b>DOOR LOCATION</b>					
FACTOR	OCCUPANCY LOAD	EGRESS WIDTH REQD (in)	ACTUAL (in)		
SANCTUARY	156	31.2	36		
RIGHT FRONT	30	30	36		
LEFT FRONT	30	30	36		
FELLOWSHIP HALL	20	30	36		



EXIT  
CAPACITY REQD: 30 INCHES  
PROVIDED EGRESS WIDTH: 36 INCHES

EXIT  
CAPACITY REQD: 30 INCHES  
PROVIDED EGRESS WIDTH: 36 INCHES

EXIT  
CAPACITY REQD: 36 INCHES  
PROVIDED EGRESS WIDTH: 72 INCHES

EXIT  
CAPACITY REQD: 36 INCHES  
PROVIDED EGRESS WIDTH: 72 INCHES

#### LEGEND:

- EXIT
- EXIT FIXTURE WITH BATTERY SIGN
- FIRE EXTINGUISHER
- FIRE ALARM PULL BOX
- FIRE ALARM STROBE
- FIRE ALARM SPEAKER
- FIRE SPRINKLER
- FAACP (FIRE ALARM CONTROL PANEL)
- COMMON PATH OF EMERGENCY EGRESS

GROSS NORTH

NOTE:  
ALL EXTERIOR SHOULD HAVE PANIC HARDWARE THAT RELEASES THE LATCH WHEN FORCE IS APPLIED IN DIRECTION OF FORCE

## LIFE SAFETY PLAN

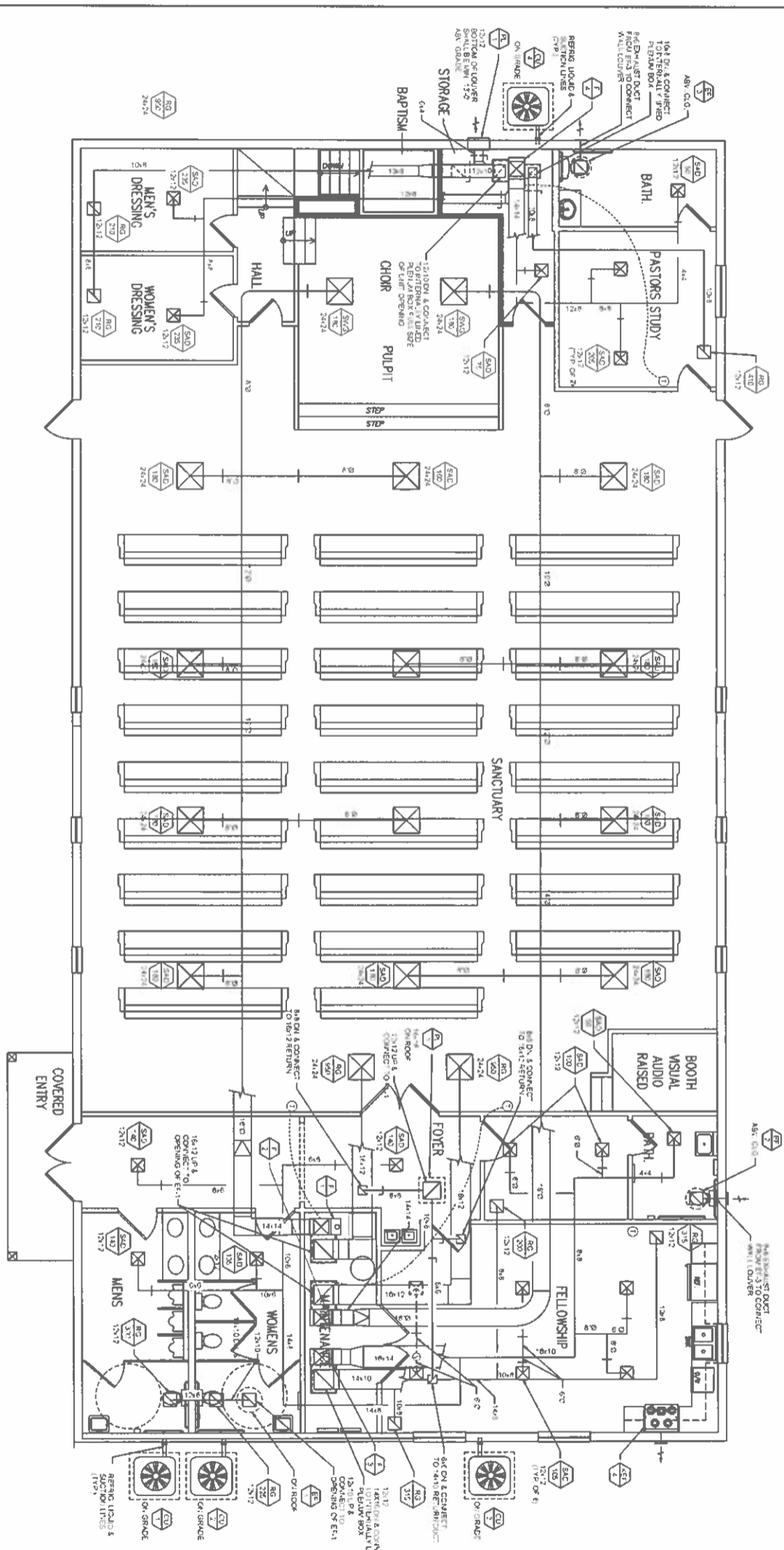
SCALE: 1/4" = 1'-0"

<p>PROJECT NO. _____ DATE _____ REVISION BY _____</p> <p>DESIGNED BY A. G. DRAWN BY A. H. CHECKED BY _____ REVIEWED BY _____</p> <p>DATE: 3/25/2021 SCALE: 1" = 20'-0"</p>	<h3>LIFE SAFETY PLAN</h3>	<h3>REFUGEE CHURCH</h3> <p>791 WILSON STREET LAKE CITY, FL 32055</p>
--	---------------------------	--

SHEET 21  
7-18-21







1 HVAC FLOOR PLAN  
Scale of 1/4" equals 1'-0"

2019.1.21

DRAWING NO. <b>M1.0</b>	ANTHONY GEORGE JR. PE CHASING NUMBER: 115 115 MILLBURN DR. SUITE 303 NEWARK, NJ 07102 TEL: 973-261-1111 FAX: 973-261-1112 www.agjpe.com	PROJECT NO.	DATE	REVISION	BY	
		DESIGNED BY A.G.	DRAWN BY A.G.	CHECKED BY A.G.	REVIEWED BY A.G.	DATE 1/21/19
		HVAC FLOOR PLAN			REFUGE CHURCH OF OUR LORD JESUS CHRIST	



**SPLIT SYSTEM AIR CONDITIONING (HEAT PUMP) UNIT SCHEDULE**

TAG	SERVICE	TYPE	SA CFM	OA CFM	ESP IN/WG	INDOOR UNIT				OUTDOOR UNIT											
						FAN HP	TOTAL MBH	SENS. MBH	EAT-F. DBWB	LAT-F	EAT-F. MBH	HEAT KW	ELEC CHAS. MCA	BASIS OF DESIGN	TAG	CAPACITY MBH	ELEC CHAS. MCA	BASIS OF DESIGN	NOTES		
AA-1	STRUCTURE	VERTICAL	120	20	0.4	1/2	372	864	50	59	-	8.0	200/162	44	TRAVEL TRAY/ROCESS	C-1	99.0	200/162	33	TRAVEL TRAY/ROCESS	(O)(O)(O)(O)(O)
AA-2	STRUCTURE	VERTICAL	120	20	0.4	1/2	360	844	50	59	-	8.0	200/162	44	TRAVEL TRAY/ROCESS	C-2	99.0	200/162	33	TRAVEL TRAY/ROCESS	(O)(O)(O)(O)(O)
AA-3	FEL. OVER AREA	VERTICAL	120	110	0.4	1/2	461	844	50	59	-	8.0	200/162	47	TRAVEL TRAY/ROCESS	C-3	99.0	200/162	33	TRAVEL TRAY/ROCESS	(O)(O)(O)(O)(O)
AA-4	FACTORY OFFICE AREA	VERTICAL	120	80	0.4	1/2	284	780	36	64	-	8.0	200/162	28	TRAVEL TRAY/ROCESS	C-4	34.2	200/162	28	TRAVEL TRAY/ROCESS	(O)(O)(O)(O)(O)

- 1. THIS IS THE SPATIAL TO THE DUCTS AND DUCTS FOR THE UNIT SHALL BE SUPPLIED WITH THE CORRECT SIZE OF DUCTS AND DUCTS SHALL BE APPROVED BY THE ARCHITECT.
- 2. ROOM POWER LEVELS FOR THE UNIT SHALL BE SUPPLIED WITH THE CORRECT SIZE OF DUCTS AND DUCTS SHALL BE APPROVED BY THE ARCHITECT.
- 3. MOUNT VERTICAL, AND IN A SHARED, AND DUCTS AND DUCTS SHALL BE APPROVED BY THE ARCHITECT.
- 4. UNIT SHALL BE SUPPLIED WITH THE CORRECT SIZE OF DUCTS AND DUCTS SHALL BE APPROVED BY THE ARCHITECT.
- 5. AIR HANDLING UNIT SHALL BE PROVIDED WITH TRAFFIC FILTERS, LEAKY DISCONNECT SWITCHES AND STARTERS FOR PROPER OPERATION OF UNIT.
- 6. HEAT PUMP UNIT SHALL BE PROVIDED WITH A LEAKY DISCONNECT SWITCH AND STARTERS FOR PROPER OPERATION OF UNIT.
- 7. PROVIDE WITH HEAD RESERVE CONTROL TO OPERATE DOWN TO 1/2 FAN SPEED.
- 8. RATIO APPROXIMATE SHALL BE USED.
- 9. MOUNT HORIZONTAL, AND IN A SHARED, AND DUCTS AND DUCTS SHALL BE APPROVED BY THE ARCHITECT.

**SEQUENCE OF OPERATION FOR FANS & CURS**

1. FAN AND CURS SHALL BE CONTROLLED BY THE ROOMS RESPECTIVE PROGRAMMABLE THERMOSTATS WITH ROOMS AND HORIZONTAL AND HORIZONTAL SHALL BE USED.

**GRILLES, REGISTERS, & DIFFUSERS SCHEDULE**

VAR#	TYPE	UFR. AND VCODEL NUMBER	FRAME	FINISH	MATERIAL	DESCRIPTION	REMARKS
SA-1	CEILING DIFFUSER	1115	12x12	ENAMEL	ALUMINUM	24" x 24" OR "24" x 24" MODULAR DIFFUSER WITH ROUND NICKEL COAT DIFFUSER, DAMPER ADJUSTABLE 180°	1/2" x 20" DIA. 8" x 8" 300 CFM
SA-2	CEILING DIFFUSER	1115	12x12	ENAMEL	ALUMINUM	DOUBLE DEFLECTION, DAMPER ADJUSTABLE 180°	1/2" x 20" DIA. 8" x 8" 300 CFM
SA-3	CEILING DIFFUSER	1115	12x12	ENAMEL	ALUMINUM	DOUBLE DEFLECTION, DAMPER ADJUSTABLE 180°	1/2" x 20" DIA. 8" x 8" 300 CFM
SA-4	CEILING DIFFUSER	1115	12x12	ENAMEL	ALUMINUM	DOUBLE DEFLECTION, DAMPER ADJUSTABLE 180°	1/2" x 20" DIA. 8" x 8" 300 CFM
SA-5	CEILING DIFFUSER	1115	12x12	ENAMEL	ALUMINUM	DOUBLE DEFLECTION, DAMPER ADJUSTABLE 180°	1/2" x 20" DIA. 8" x 8" 300 CFM
SA-6	CEILING DIFFUSER	1115	12x12	ENAMEL	ALUMINUM	DOUBLE DEFLECTION, DAMPER ADJUSTABLE 180°	1/2" x 20" DIA. 8" x 8" 300 CFM
SA-7	CEILING DIFFUSER	1115	12x12	ENAMEL	ALUMINUM	DOUBLE DEFLECTION, DAMPER ADJUSTABLE 180°	1/2" x 20" DIA. 8" x 8" 300 CFM
SA-8	CEILING DIFFUSER	1115	12x12	ENAMEL	ALUMINUM	DOUBLE DEFLECTION, DAMPER ADJUSTABLE 180°	1/2" x 20" DIA. 8" x 8" 300 CFM
SA-9	CEILING DIFFUSER	1115	12x12	ENAMEL	ALUMINUM	DOUBLE DEFLECTION, DAMPER ADJUSTABLE 180°	1/2" x 20" DIA. 8" x 8" 300 CFM
SA-10	CEILING DIFFUSER	1115	12x12	ENAMEL	ALUMINUM	DOUBLE DEFLECTION, DAMPER ADJUSTABLE 180°	1/2" x 20" DIA. 8" x 8" 300 CFM

**FAN SCHEDULE**


LINE	CAPACITY (CFM)	HP	TYPE	VOL. LEAKAGE	MAX. RPM	COEFF. OF EFFICIENCY	UNIT WEIGHT (LBS)	NET DR. FAN	BASIS OF DESIGN	REMARKS
F-1	20	1.6	DIRT	1200	1450	0.55	15	15	CEILING DIFFUSER	1.2
F-2	20	1.6	DIRT	1200	1450	0.55	15	15	CEILING DIFFUSER	1.2
F-3	20	1.6	DIRT	1200	1450	0.55	15	15	CEILING DIFFUSER	1.2
F-4	20	1.6	DIRT	1200	1450	0.55	15	15	CEILING DIFFUSER	1.2
F-5	20	1.6	DIRT	1200	1450	0.55	15	15	CEILING DIFFUSER	1.2
F-6	20	1.6	DIRT	1200	1450	0.55	15	15	CEILING DIFFUSER	1.2
F-7	20	1.6	DIRT	1200	1450	0.55	15	15	CEILING DIFFUSER	1.2
F-8	20	1.6	DIRT	1200	1450	0.55	15	15	CEILING DIFFUSER	1.2
F-9	20	1.6	DIRT	1200	1450	0.55	15	15	CEILING DIFFUSER	1.2
F-10	20	1.6	DIRT	1200	1450	0.55	15	15	CEILING DIFFUSER	1.2

**SEQUENCE OF OPERATION**

1. EXHAUST FAN SHALL BE CONTROLLED BY THE ROOMS RESPECTIVE PROGRAMMABLE THERMOSTATS WITH ROOMS AND HORIZONTAL AND HORIZONTAL SHALL BE USED.
2. FAN SHALL BE PROVIDED WITH TRAFFIC FILTERS, LEAKY DISCONNECT SWITCHES AND STARTERS FOR PROPER OPERATION OF UNIT.
3. FAN SHALL BE PROVIDED WITH HEAD RESERVE CONTROL TO OPERATE DOWN TO 1/2 FAN SPEED.
4. RATIO APPROXIMATE SHALL BE USED.
5. MOUNT HORIZONTAL, AND IN A SHARED, AND DUCTS AND DUCTS SHALL BE APPROVED BY THE ARCHITECT.

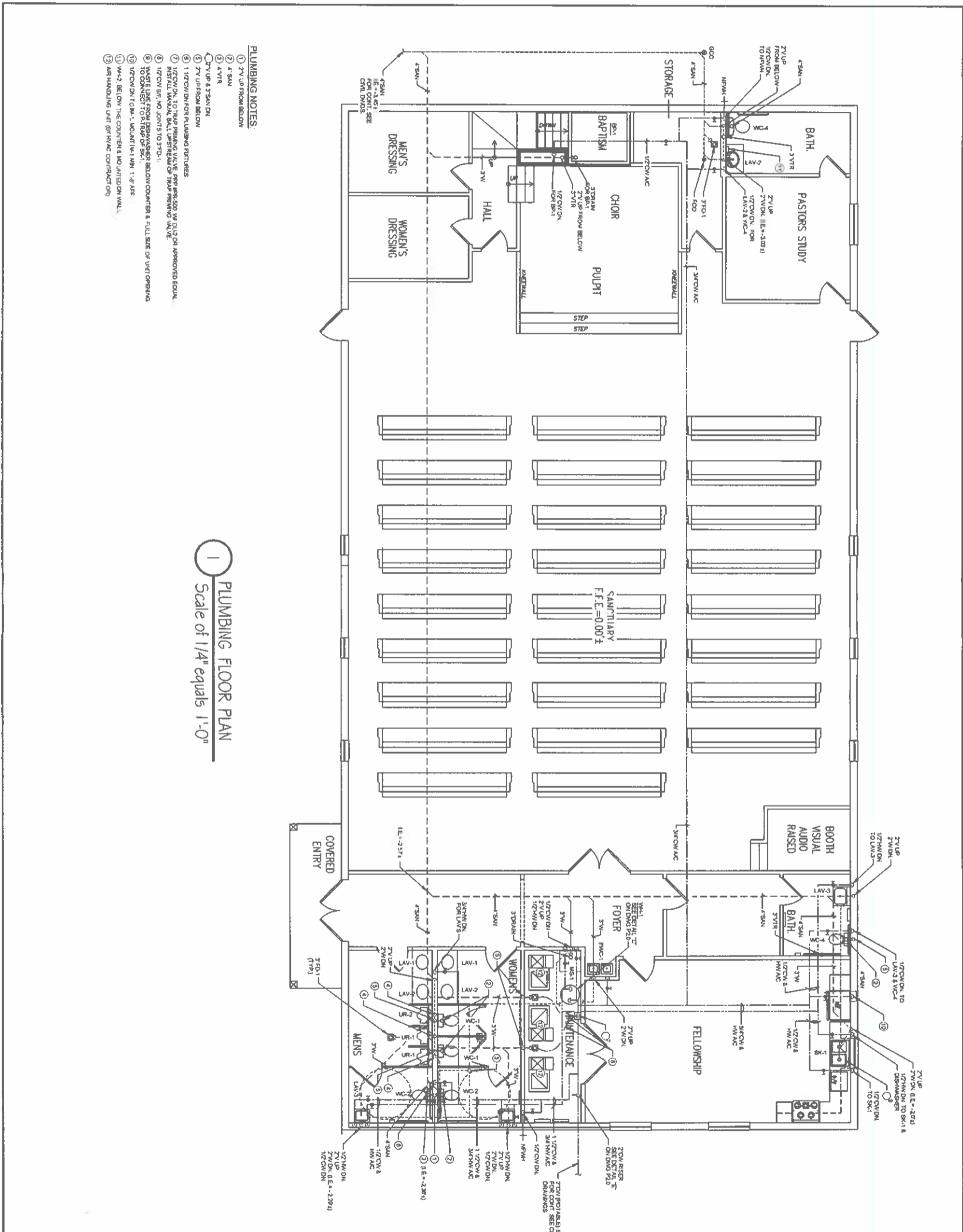
**PENTHOUSE LOUVERS & WALL LOUVERS**

TAG	MAKE & MODEL	SIZE (SQ. FT.)	MIN. AREA (SQ. FT.)	MAXIMUM PRESS. VACUUM @ 500 FPM	SERVICE	INTERLOCK	ROOF CURB	SCREEN	NOTES
PL-1	ROOF CURB	12x12	9.7	0.8	0.4 IN/WG	NO	YES	BRO	1.2.1
PL-2	ROOF CURB	12x12	9.7	0.8	0.4 IN/WG	NO	YES	BRO	1.2.1
PL-3	ROOF CURB	12x12	9.7	0.8	0.4 IN/WG	NO	YES	BRO	1.2.1
PL-4	ROOF CURB	12x12	9.7	0.8	0.4 IN/WG	NO	YES	BRO	1.2.1
PL-5	ROOF CURB	12x12	9.7	0.8	0.4 IN/WG	NO	YES	BRO	1.2.1
PL-6	ROOF CURB	12x12	9.7	0.8	0.4 IN/WG	NO	YES	BRO	1.2.1
PL-7	ROOF CURB	12x12	9.7	0.8	0.4 IN/WG	NO	YES	BRO	1.2.1
PL-8	ROOF CURB	12x12	9.7	0.8	0.4 IN/WG	NO	YES	BRO	1.2.1
PL-9	ROOF CURB	12x12	9.7	0.8	0.4 IN/WG	NO	YES	BRO	1.2.1
PL-10	ROOF CURB	12x12	9.7	0.8	0.4 IN/WG	NO	YES	BRO	1.2.1

	PROJECT NO. A C DRAWING NO. M2.0 DATE 3/1/2024 SCALE 1/8" = 1'-0"	REVISION NO. 1 DATE BY	HVAC SCHEDULES	REFUGE CHURCH OF OUR LORD JESUS CHRIST
	ANTHONY GEORGE JR. PE CONSULTING ENGINEER 12345 MAIN ST. SUITE 100 ARLINGTON, VA 22202 (703) 555-1234	PROJECT NO. A C DRAWING NO. M2.0 DATE 3/1/2024 SCALE 1/8" = 1'-0"	REVISION NO. 1 DATE BY	HVAC SCHEDULES








- PLUMBING NOTES:**
- 1) 2" UP FROM BELOW
  - 2) 4" SAN
  - 3) 4" VTR
  - 4) 2" UP FROM BELOW
  - 5) 1" UP FROM BELOW
  - 6) 1" UP FROM BELOW FOR PLUMBING FIXTURES
  - 7) 1/2" UP FROM BELOW FOR PLUMBING VALVE, PIPE SECTION MAY VARY ON APPROVED EQUAL.
  - 8) 1/2" UP FROM BELOW FOR PLUMBING VALVE, PIPE SECTION MAY VARY ON APPROVED EQUAL.
  - 9) 1/2" UP FROM BELOW FOR PLUMBING VALVE, PIPE SECTION MAY VARY ON APPROVED EQUAL.
  - 10) 1/2" UP FROM BELOW FOR PLUMBING VALVE, PIPE SECTION MAY VARY ON APPROVED EQUAL.
  - 11) 1/2" UP FROM BELOW FOR PLUMBING VALVE, PIPE SECTION MAY VARY ON APPROVED EQUAL.
  - 12) 1/2" UP FROM BELOW FOR PLUMBING VALVE, PIPE SECTION MAY VARY ON APPROVED EQUAL.
  - 13) 1/2" UP FROM BELOW FOR PLUMBING VALVE, PIPE SECTION MAY VARY ON APPROVED EQUAL.
  - 14) 1/2" UP FROM BELOW FOR PLUMBING VALVE, PIPE SECTION MAY VARY ON APPROVED EQUAL.
  - 15) 1/2" UP FROM BELOW FOR PLUMBING VALVE, PIPE SECTION MAY VARY ON APPROVED EQUAL.
  - 16) 1/2" UP FROM BELOW FOR PLUMBING VALVE, PIPE SECTION MAY VARY ON APPROVED EQUAL.
  - 17) 1/2" UP FROM BELOW FOR PLUMBING VALVE, PIPE SECTION MAY VARY ON APPROVED EQUAL.
  - 18) 1/2" UP FROM BELOW FOR PLUMBING VALVE, PIPE SECTION MAY VARY ON APPROVED EQUAL.
  - 19) 1/2" UP FROM BELOW FOR PLUMBING VALVE, PIPE SECTION MAY VARY ON APPROVED EQUAL.
  - 20) 1/2" UP FROM BELOW FOR PLUMBING VALVE, PIPE SECTION MAY VARY ON APPROVED EQUAL.

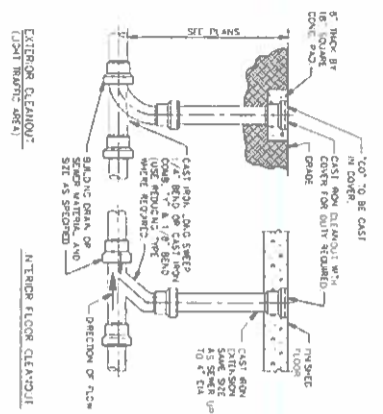
1 PLUMBING FLOOR PLAN  
Scale of 1/4" equals 1'-0"

188  
47 822  
20 11 24

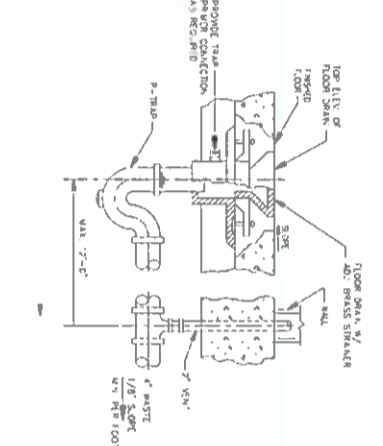
<b>P1.0</b> DRAWING NO.	ANTHONY GEORGE JR PE CIVIL ENGINEER, LLC 1111 WILSON STREET LAKE CITY, FL 32055 PHONE (904) 991-7171	<table border="1" style="width: 100%; border-collapse: collapse;"> <tr> <th>PROJECT NO.</th> <th>DATE</th> <th>REVISION</th> <th>BY</th> </tr> <tr> <td> </td> <td> </td> <td> </td> <td> </td> </tr> </table>	PROJECT NO.	DATE	REVISION	BY					<b>PLUMBING FLOOR PLAN</b>	<b>REFUGE CHURCH OF OUR LORD JESUS CHRIST</b> 791 WILSON STREET LAKE CITY, FL 32055	
PROJECT NO.	DATE	REVISION	BY										



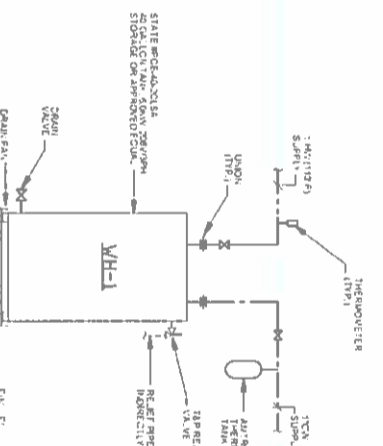




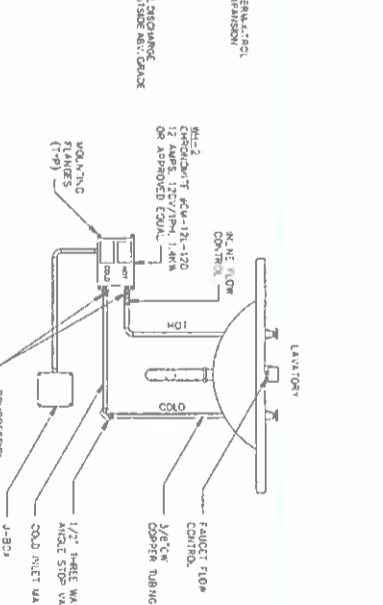
**A CLEANOUT DETAILS**  
P2.0 / NTS



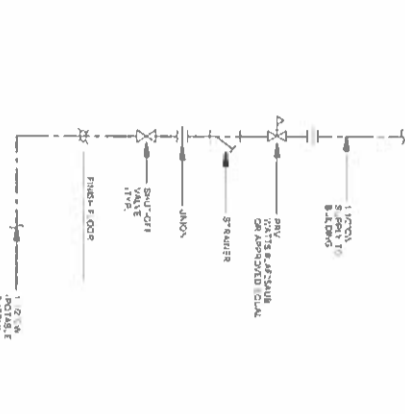
**B FLOOR DRAIN DETAIL**  
P2.0 / NTS



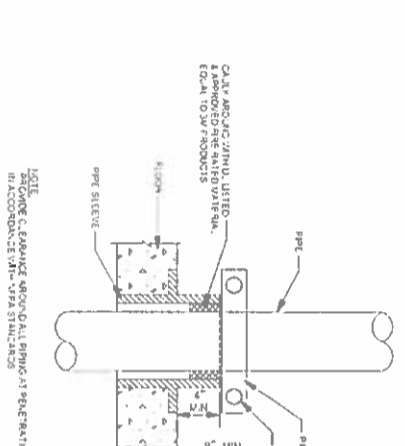
**C GAS WATER HEATER DETAIL**  
P2.0 / NTS



**D TANKLESS WATER HEATER DETAIL**  
P2.0 / NTS



**E PRESSURE REDUCING VALVE STATION DETAIL**  
P2.0 / NTS

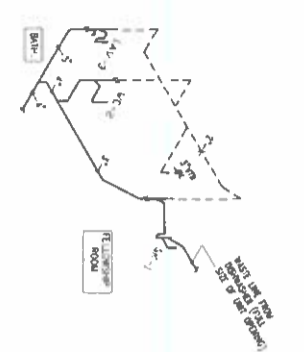


**F RISER SLEEVE DETAIL**  
P2.0 / NTS

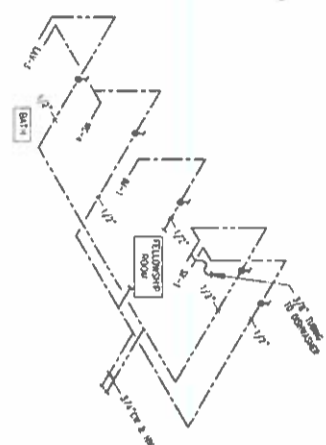
	<b>PLUMBING DETAILS</b>		<b>REFUGE CHURCH OF OUR LORD JESUS CHRIST</b>	
	PROJECT NO. A.C. DESIGNED BY CHECKED BY DRAWN BY DATE	REVISIONS NO. DATE DESCRIPTION	BY DATE	SCALE 1/8" = 1'-0"

ANTHONY GEORGE JR. PE  
 CIVIL ENGINEER  
 11111 N. HURON ST.  
 SUITE 100  
 FALLS CHURCH, VA 22034  
 (703) 441-1111  
 agj@agjpe.com

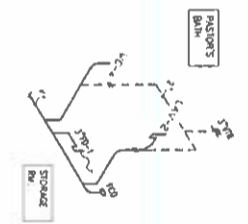
25, 8/22  
 24, 8/22  
 23, 8/22



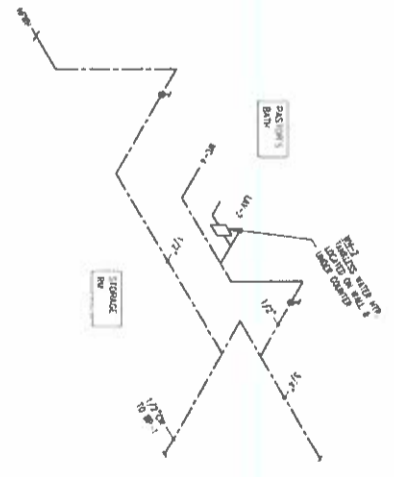
SANITARYWASTE



POTABLE WATER

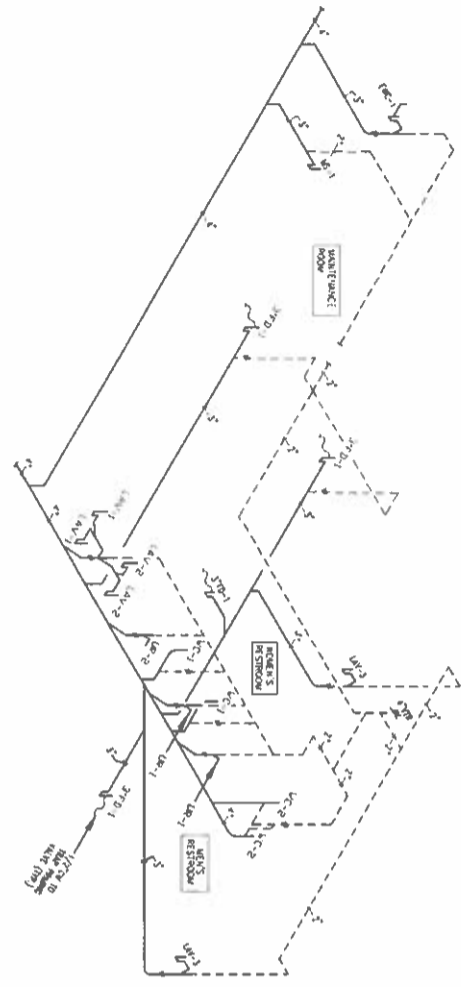


SANITARYWASTE

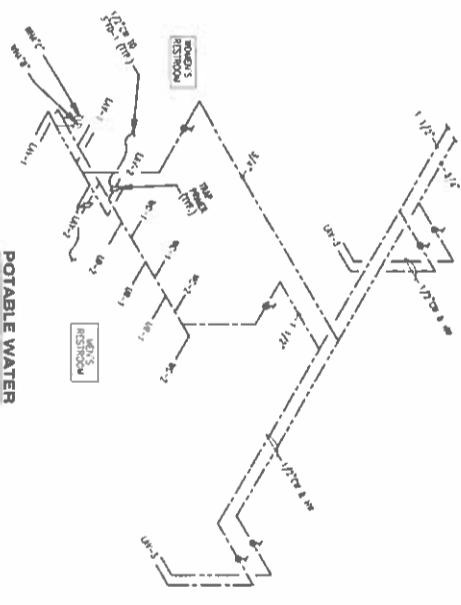


POTABLE WATER

1 RISER DIAGRAMS  
P3.0 INT



SANITARYWASTE



POTABLE WATER

2 RISER DIAGRAMS  
P3.0 INT



REFUGE CHURCH OF OUR LORD JESUS CHRIST

PLUMBING RISER DIAGRAM

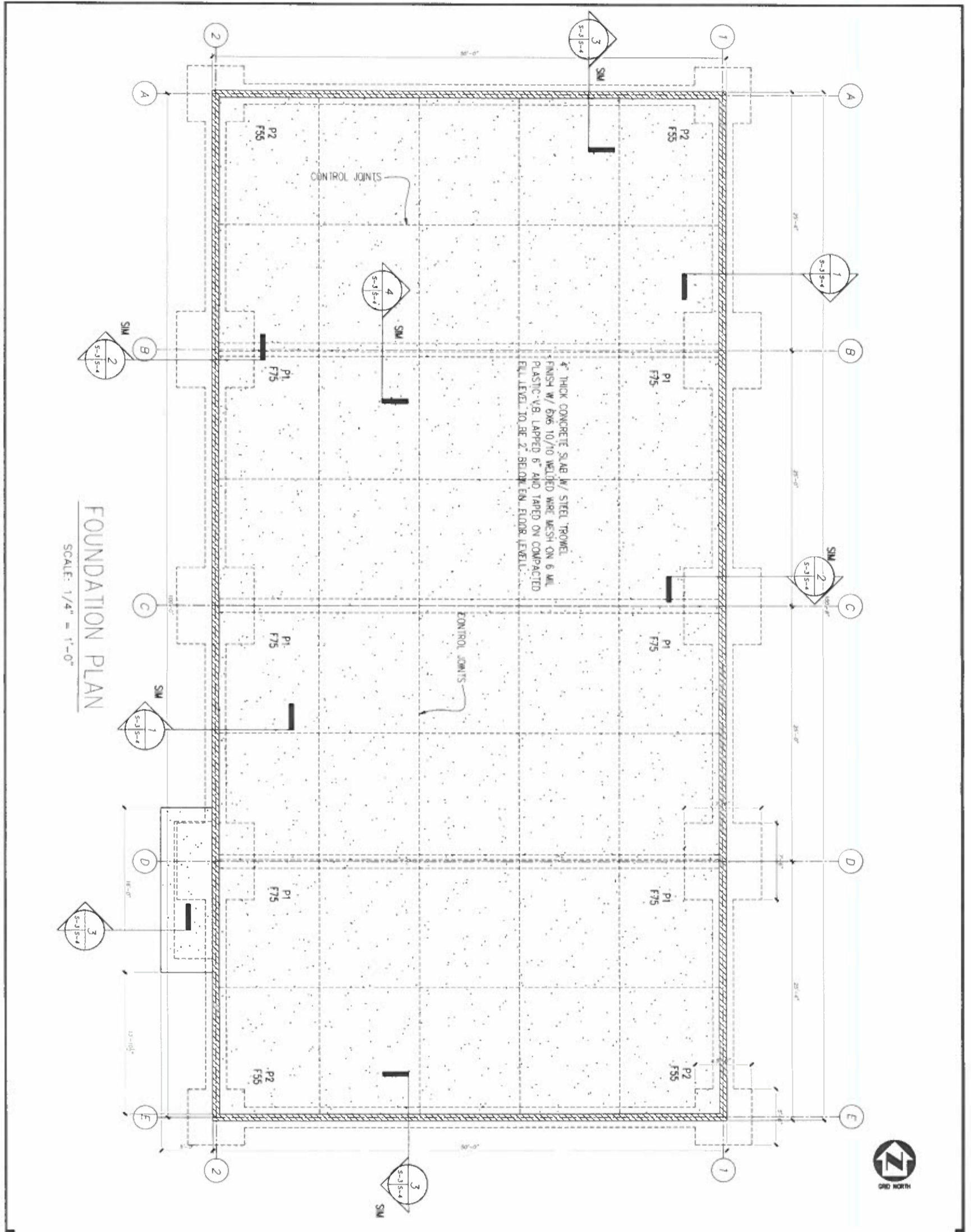
PROJECT NO.	DATE	REVISION	BY

ANTHONY GEORGE JR PE  
 ANTHONY GEORGE JR PE  
 1100 ALABAMA DRIVE  
 SUITE 200  
 MOBILE AL 36688  
 PHONE (904) 771-2211 FAX (904) 771-2211  
 agj@agjpe.com

P3.0  
 SCALE 3/8" = 1'-0"  
 22







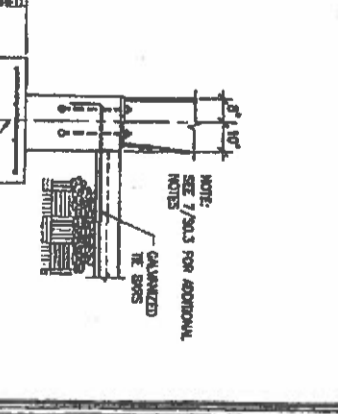
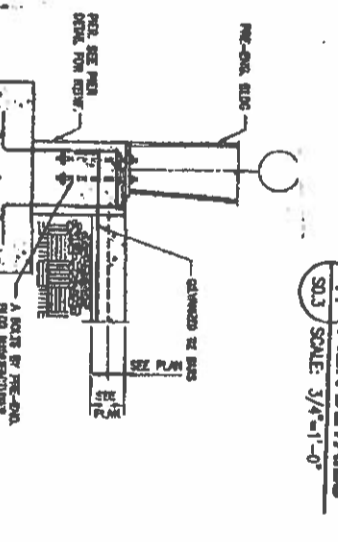
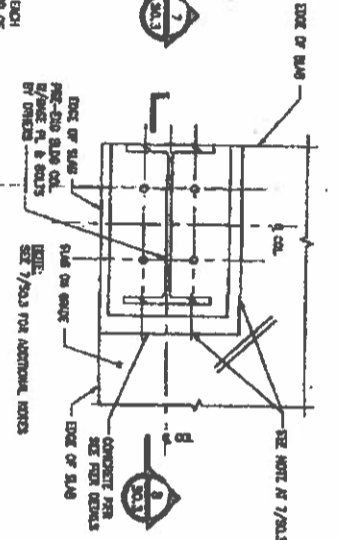
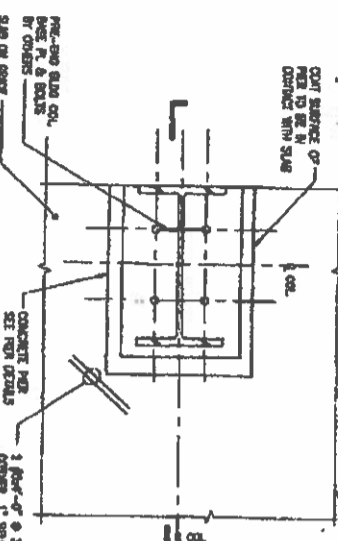
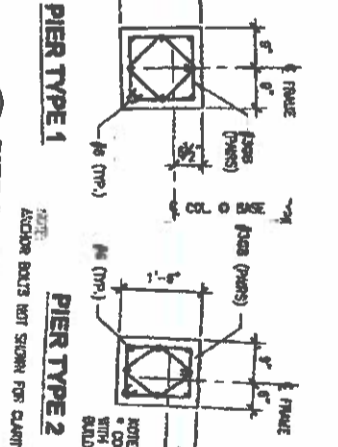
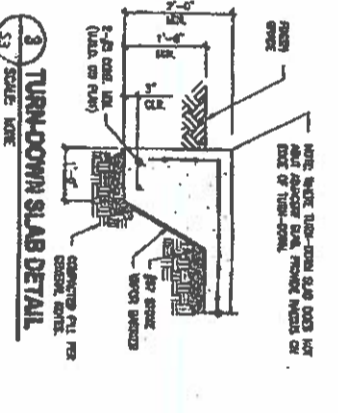
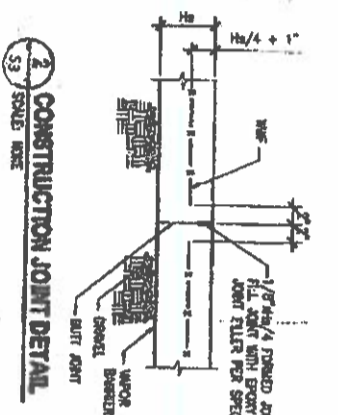
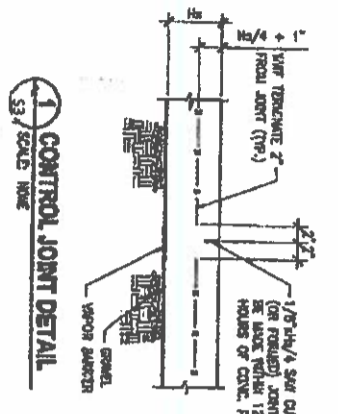
FOUNDATION PLAN  
SCALE: 1/4" = 1'-0"



*Handwritten notes:*  
17  
12

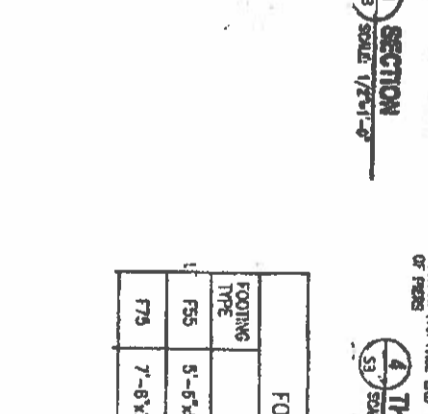
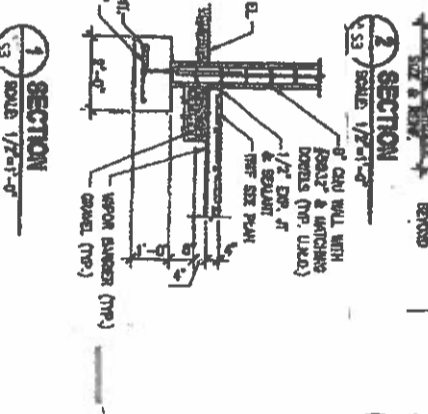
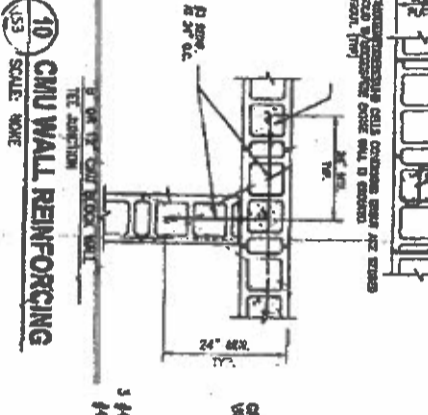
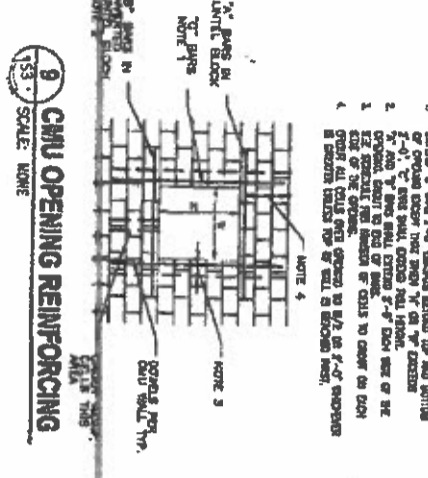
SHEET 14 OF 28 S3.0 ANTHONY GEORGE JR PE CONSULTING ENGINEER, LLC 1138 WILSON STREET LAKE CITY, FL 32055 PHONE (407) 701-1000 FAX (407) 701-500 anthony@agj.com	PROJECT NO. 2021-001	DATE 4/5/2021	REVISION AS SHOWN	BY A.G.	FOUNDATION PLAN REFUGEE CHURCH 791 WILSON STREET LAKE CITY, FL 32055
	DESIGNED BY A.G.	CHECKED BY A.G.	APPROVED BY A.G.	TITLE AS SHOWN	





**CMU OPENING REINF. SCHEDULE**

W	H	W	H	W	H	W	H	W	H
8" CMU	12" CMU	8" CMU	12" CMU	8" CMU	12" CMU	8" CMU	12" CMU	8" CMU	12" CMU
1-20	1-20	1-20	1-20	1-20	1-20	1-20	1-20	1-20	1-20
2-20	2-20	2-20	2-20	2-20	2-20	2-20	2-20	2-20	2-20
3-20	3-20	3-20	3-20	3-20	3-20	3-20	3-20	3-20	3-20
4-20	4-20	4-20	4-20	4-20	4-20	4-20	4-20	4-20	4-20
5-20	5-20	5-20	5-20	5-20	5-20	5-20	5-20	5-20	5-20
6-20	6-20	6-20	6-20	6-20	6-20	6-20	6-20	6-20	6-20
7-20	7-20	7-20	7-20	7-20	7-20	7-20	7-20	7-20	7-20
8-20	8-20	8-20	8-20	8-20	8-20	8-20	8-20	8-20	8-20
9-20	9-20	9-20	9-20	9-20	9-20	9-20	9-20	9-20	9-20
10-20	10-20	10-20	10-20	10-20	10-20	10-20	10-20	10-20	10-20
11-20	11-20	11-20	11-20	11-20	11-20	11-20	11-20	11-20	11-20
12-20	12-20	12-20	12-20	12-20	12-20	12-20	12-20	12-20	12-20



**FOOTING SCHEDULE**

FOOTING TYPE	SIZE	REINF.
F55	5'-6" x 5'-6" x 1'-6"	6 #3 E.W., BOT.
F75	7'-8" x 7'-8" x 1'-9"	8 #3 E.W., BOT.
		7 #3 E.W., TOP

PROJECT NO. \_\_\_\_\_ DATE \_\_\_\_\_ REVISION \_\_\_\_\_

ANTHONY GEORGE JR PE  
133 MILLER BLVD  
LAKE CITY, FL 32055  
PHONE: 407-321-1111

STRUCTURAL DETAILS

REFUGEE CHURCH  
791 WILSON STREET  
LAKE CITY, FL 32055

SHEET 11 OF 28  
S4.0

15 of 25  
14 of 26  
13 of 27