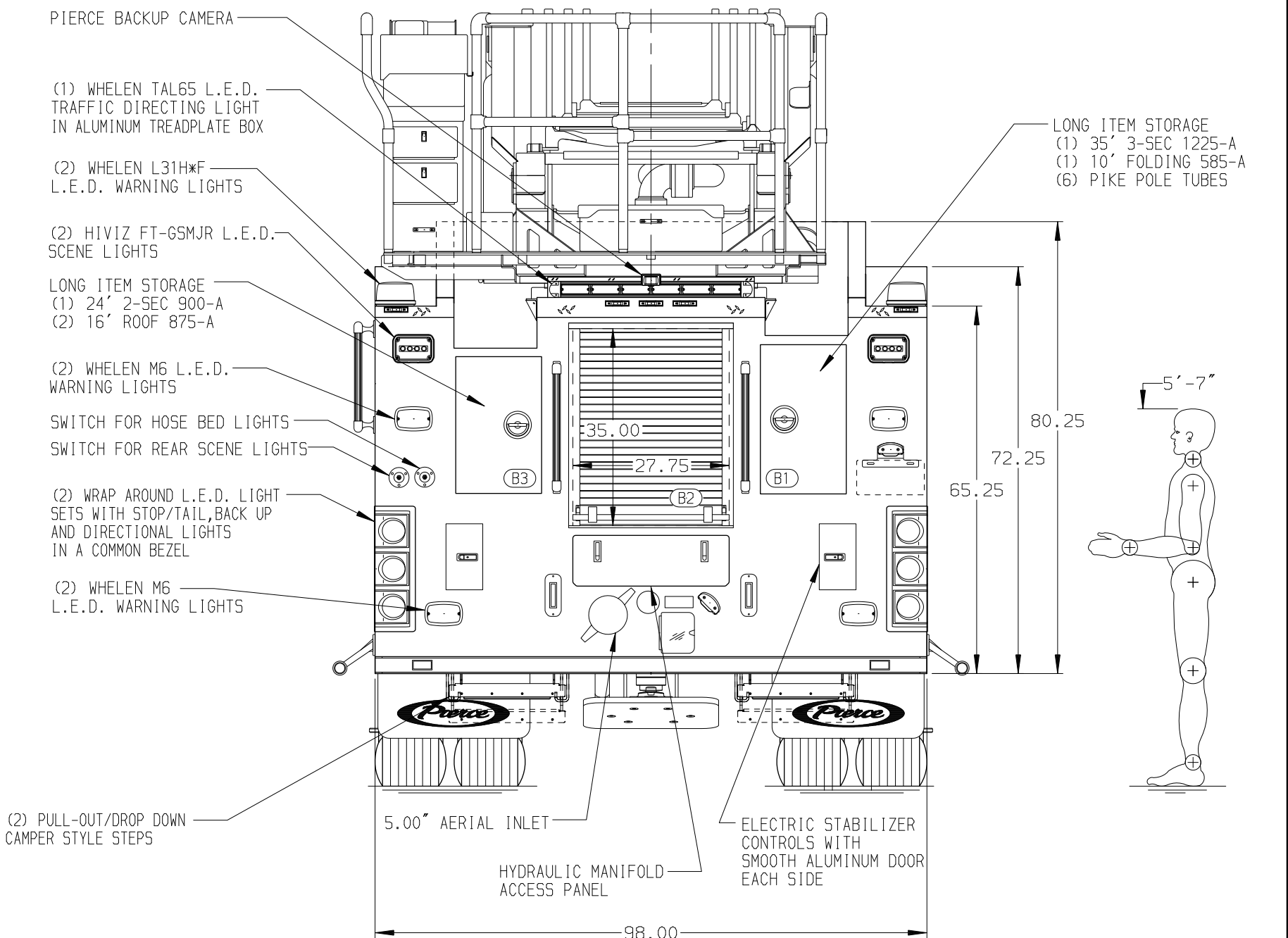
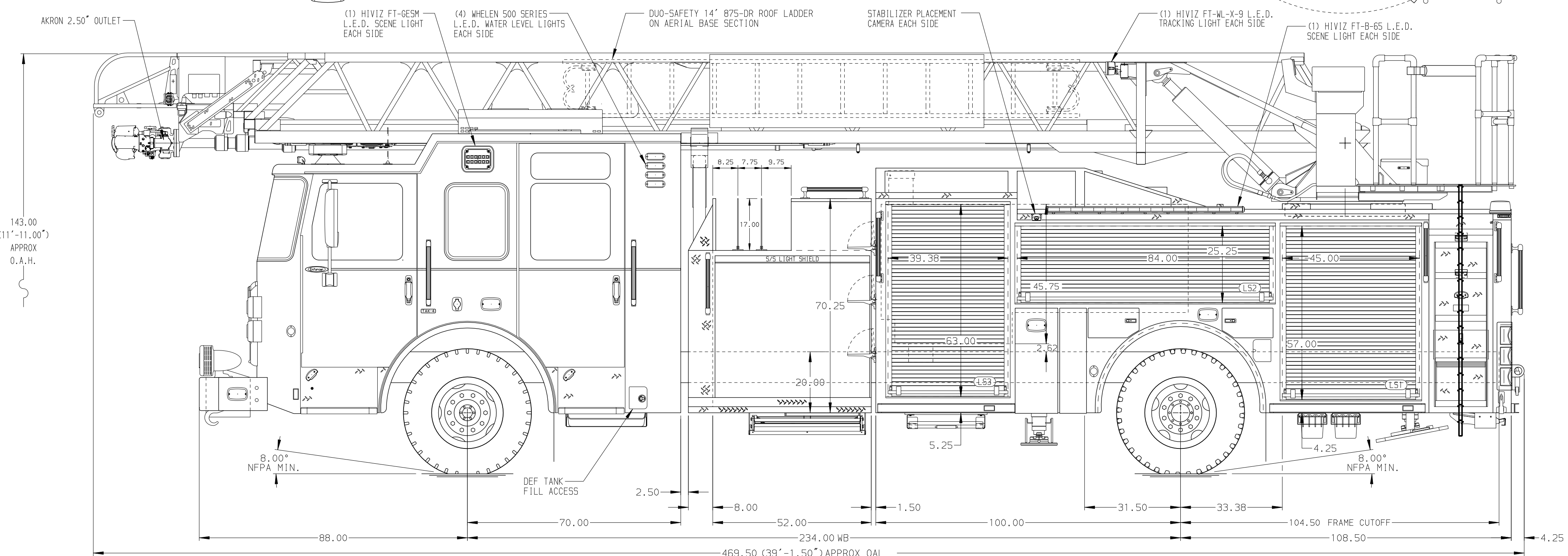


BODY	WATER TANK
107' ASL Aluminum Body	500 Gallon Poly Water Tank
COMPT, LEFT SIDE FRONT	Foam System
Full Height RollUp Forward	Plumbing for Future Husky Foam System
COMPT, LEFT SIDE REAR	Foam Cell
Full Height RollUp Rearward	20 Gallon Foam Cell, Non Reduced Water
COMPT, RIGHT SIDE FRONT	
Full Height RollUp Forward	
COMPT, RIGHT SIDE REAR	
Full Height RollUp Rearward	



CHASSIS	CAB	AXLE, FRONT, CUSTOM	TRANSMISSION	PUMPHOUSE	CROSSLAYS, 1.50"	SPEEDLAYS	SAFETY	CUSTOMER APPROVAL	Pierce MANUFACTURING INC.		JOB NO.
Enforcer Chassis	7010 Enforcer Notched Cab	22,800 Lb TAK-4 Axle	Allison 6th Gen, 4000 EV5 P	52" Control Zone Side Mount	(2) 1.50" Standard Capacity	Speedlays Not Required	Side Roll and Frontal Impact Protection	APPROVED BY: _____	Pierce		43663
ENGINE	BUMPER	AXLE, REAR		PUMP	CROSSLAYS, 2.50"	GENERATOR		DATE: _____	MANUFACTURING INC.		SCALE
510 HP Paccor MX13 Engine	19" Extended Painted Steel	33,500 Lb Meritor Axle		2000 GPM Watertous CSU	(1) 2.50" Standard Capacity	Generator Not Required			107' ASCENDANT AERIAL LADDER AND BODY ASSEMBLY		1:24
NOTE									FOR PIERCE FIELD UNIT APPLETON, WI		DATE
DIMENSIONS SHOWN ARE APPROXIMATE AND ARE SUBJECT TO MINOR DEVIATIONS AS MAY OCCUR OR BE NECESSARY IN CONSTRUCTION. MINOR DETAILS NOT SHOWN.									DRAWN BY LWL		09DEC24
1. SHORELINE RECEPTACLE WITH KUSSMALL SUPER AUTO-EJECT LOCATED ON DRIVER SIDE OF THE CAB									CHECKED BY AST		10DEC24
2. AIR INLET WITH DISCONNECT COUPLING LOCATED FORWARD IN THE DRIVER SIDE STEPWELL									SHEET SIZE		SHEET NO.
3. BATTERY CHARGER LOCATED BEHIND DRIVERS SEAT									D		1 OF 1
4. BATTERY CHARGE INDICATOR LOCATED PER ORDER									DWG NO.		
5. ONE 1.50" OUTLET WITH 2.00" PIPING AND SWIVEL LOCATED IN CENTER BUMPER TRAY									43663AD		
6. SIX ADJUSTABLE SHELVES LOCATED IN COMPARTMENTS PER ORDER											
7. THREE FLOOR MOUNTED SLIDE-OUT TRAYS LOCATED IN COMPARTMENTS PER ORDER											
8. ONE CTECH CABINET LOCATED IN COMPARTMENT PER ORDER											
9. ONE RECEPTACLE LOCATED IN COMPARTMENT PER ORDER											
10. DUAL L.E.D. LIGHT STRIPS LOCATED IN COMPARTMENTS PER ORDER											
11. TWO RECEPTACLE STRIPS LOCATED PER ORDER											
12. ONE SWING-OUT TOOLBOARD LOCATED IN COMPARTMENT PER ORDER											
13. ONE VERTICAL PARTITION LOCATED IN COMPARTMENT PER ORDER											
14. ONE BACK WALL MOUNTED PEGBOARD LOCATED IN COMPARTMENT PER ORDER											
15. 1500 GPM HIGH FLOW WATERWAY											
16. LIMITED RETRACTION NOT REQUIRED											
17. MOUNTING PROVISIONS FOR FRONT INLET											
18. RING LIGHTING ON AERIAL LADDER											