

Procedure for operating connection with Rothschild in the event of an emergency.

County Highway XX and Tower Rd.

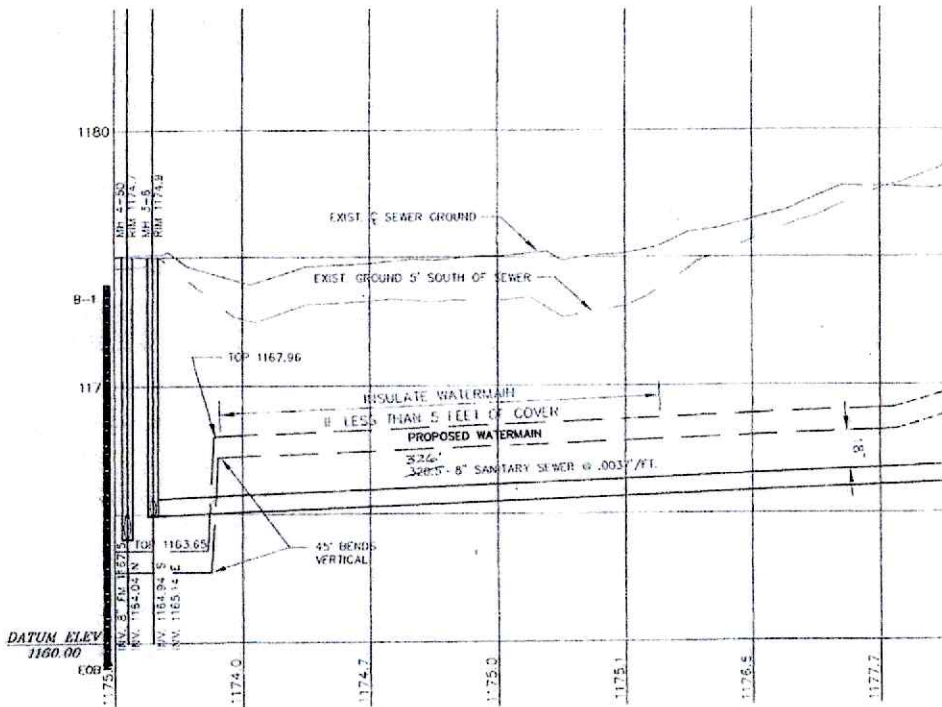
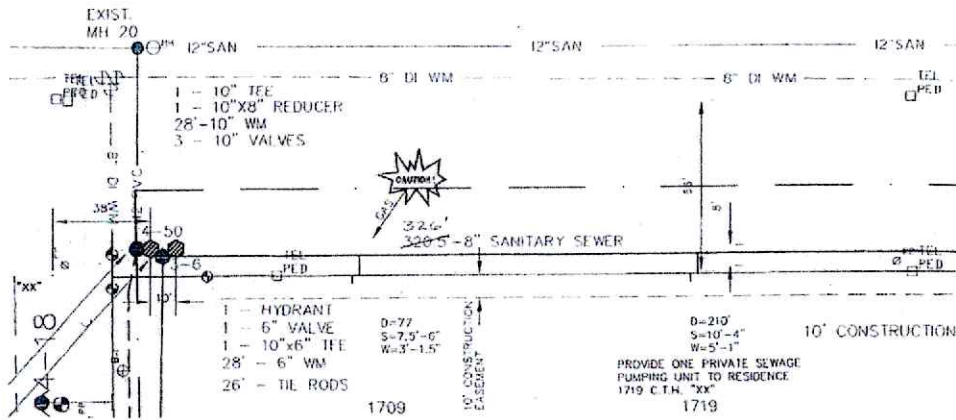
- 1) Contract **Rick Stoviak, Rothschild Water lead, (715)302-0707** and inform him of the situation and that you will need to open the Tower and CTHXX emergency connection.
- 2) Close valves: **A-0030-M** (Tower Rd. and CTHXX) and **A-0350-M** (Tower by HYD 4-17, south of intersection).
- 3) Open Emergency connection valves at CTH XX and Tower Rd: **A-0001-E**
- 4) Open and flush: **HYD 4-17** for 10-15 minutes (There are no customer services on this stretch of water main).
- 5) Open valves: **A-0350-M** (Tower Rd. by HYD 4-17, south of intersection) and **A-0030-M** (Tower and CTHXX).

There will be discolored water events, especially in the adjacent neighborhoods, due to the flushing of the emergency connection and the general disruption of the system.

- 6) If after hours contact **Mark Mackey (715)574-3868** or the **Kronenwetter PWD** and advise of the situation.

*Rothschild
Town @ CTH XX*

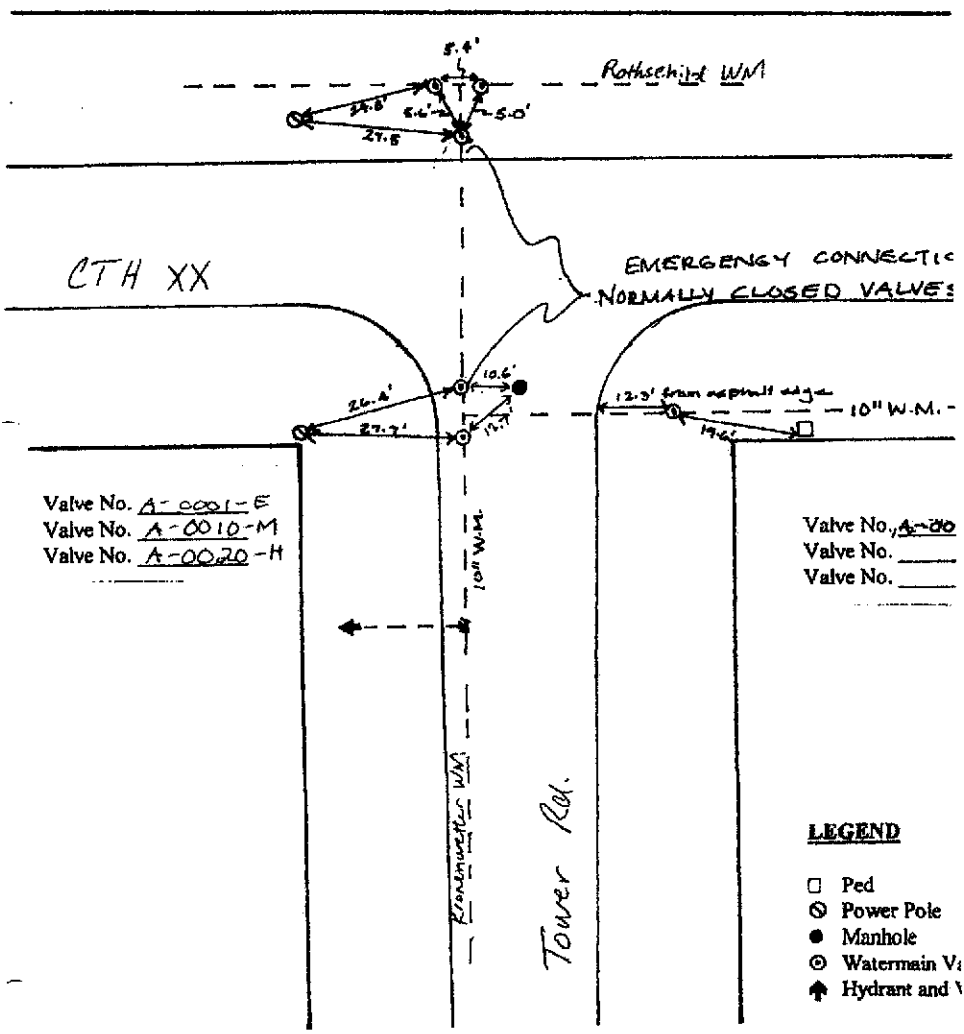
VILLAGE



HYD Valve
2 ft.
 From HYD
 No. 4-18



Valve No. _____
 Valve No. _____



CTH XX

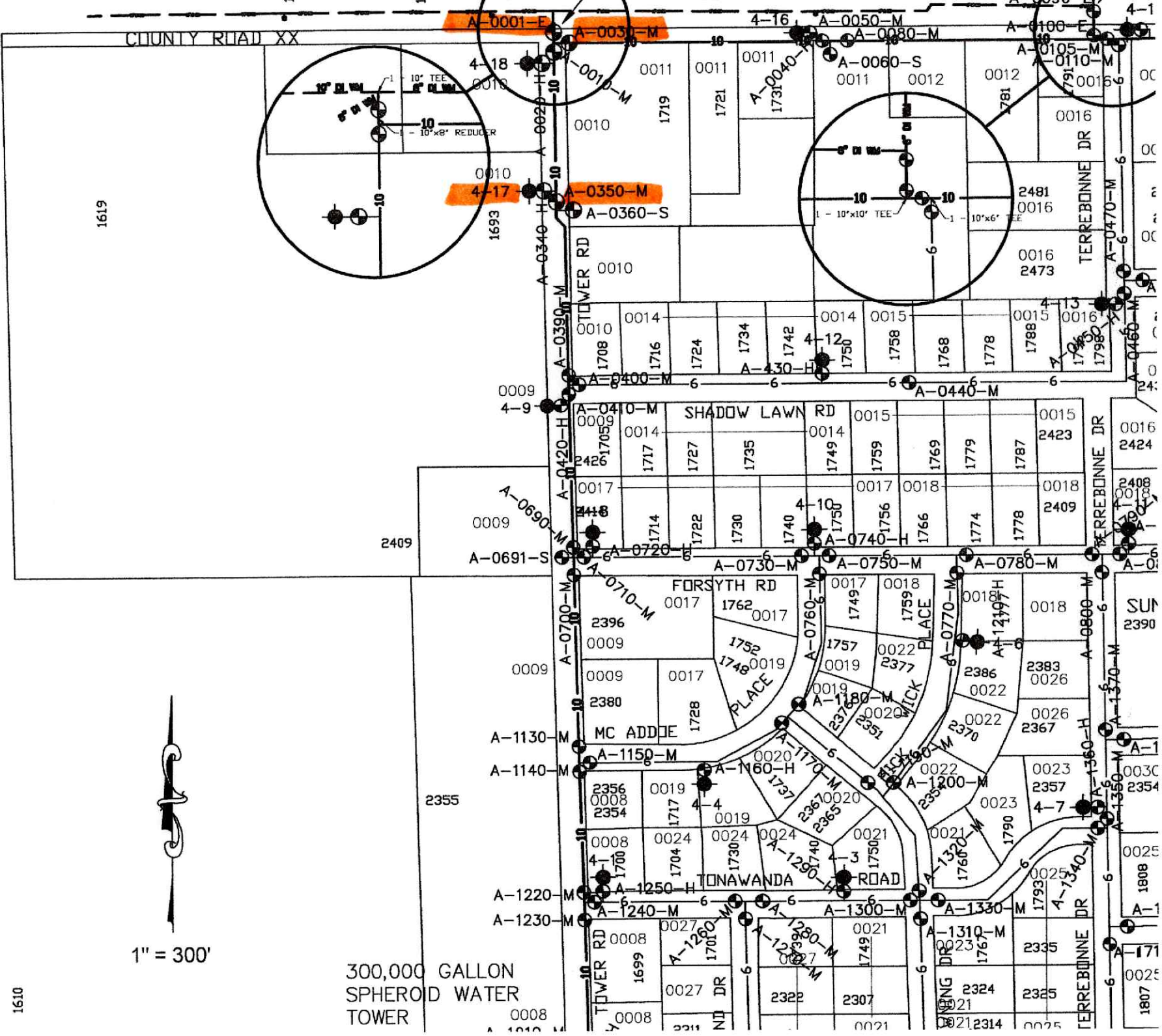
EMERGENCY CONNECTIC
 NORMALLY CLOSED VALVES

Valve No. A-0001-E
 Valve No. A-0010-M
 Valve No. A-0020-H

Valve No. A-00
 Valve No. _____
 Valve No. _____

LEGEND

- Ped
- ⊙ Power Pole
- Manhole
- ⊙ Watermain V
- ⬆ Hydrant and V



1619

1" = 300'



300,000 GALLON
SPHEROID WATER
TOWER

1610

1807
1808
0025
A-171
0025
0023
2325
2324
1763
A-1310-M
0021
0025

SUN
2390

0016
2424

0016
2473

0016
2481

0016
1791

A-0090-E
4-1

A-0100-E
4-1

A-0080-M
4-16

A-0050-M
4-16

A-0030-M
4-16

A-0010-M
4-16

A-0001-E
4-16

A-0040-M
4-16

A-0060-S
4-16

A-0080-M
4-16

A-0105-M
4-16

A-0110-M
4-16

A-0130-M
4-16

A-0150-M
4-16

A-0170-M
4-16

A-0190-M
4-16

A-0210-M
4-16

A-0230-M
4-16

A-0250-M
4-16

A-0270-M
4-16

A-0290-M
4-16

A-0310-M
4-16

A-0330-M
4-16

A-0350-M
4-16

A-0360-S
4-16

A-0380-M
4-16

A-0400-M
4-16

A-0420-H
4-16

A-0440-M
4-16

A-0460-M
4-16

A-0480-M
4-16

A-0500-M
4-16

A-0520-M
4-16

A-0540-M
4-16

A-0560-M
4-16

A-0580-M
4-16

A-0600-M
4-16

A-0620-M
4-16

A-0640-M
4-16

A-0660-M
4-16

A-0680-M
4-16

A-0700-M
4-16

A-0720-M
4-16

A-0740-M
4-16

A-0760-M
4-16

A-0780-M
4-16

A-0800-M
4-16

A-0820-M
4-16

A-0840-M
4-16

A-0860-M
4-16

A-0880-M
4-16

A-0900-M
4-16

A-0920-M
4-16

A-0940-M
4-16

A-0960-M
4-16

A-0980-M
4-16

A-1000-M
4-16

A-1020-M
4-16

A-1040-M
4-16

A-1060-M
4-16

A-1080-M
4-16

A-1100-M
4-16

A-1120-M
4-16

A-1140-M
4-16

A-1160-M
4-16

A-1180-M
4-16

A-1200-M
4-16

A-1220-M
4-16

A-1240-M
4-16

A-1260-M
4-16

A-1280-M
4-16

A-1300-M
4-16

A-1320-M
4-16

A-1340-M
4-16

A-1360-M
4-16

A-1380-M
4-16

A-1400-M
4-16

A-1420-M
4-16

A-1440-M
4-16

A-1460-M
4-16

A-1480-M
4-16

A-1500-M
4-16

A-1520-M
4-16

A-1540-M
4-16

A-1560-M
4-16

A-1580-M
4-16

A-1600-M
4-16

A-1620-M
4-16

A-1640-M
4-16

A-1660-M
4-16

A-1680-M
4-16

A-1700-M
4-16

A-1720-M
4-16

A-1740-M
4-16

A-1760-M
4-16

A-1780-M
4-16

A-1800-M
4-16

A-1820-M
4-16

A-1840-M
4-16

A-1860-M
4-16

A-1880-M
4-16

A-1900-M
4-16

A-1920-M
4-16

A-1940-M
4-16

A-1960-M
4-16

A-1980-M
4-16

A-2000-M
4-16