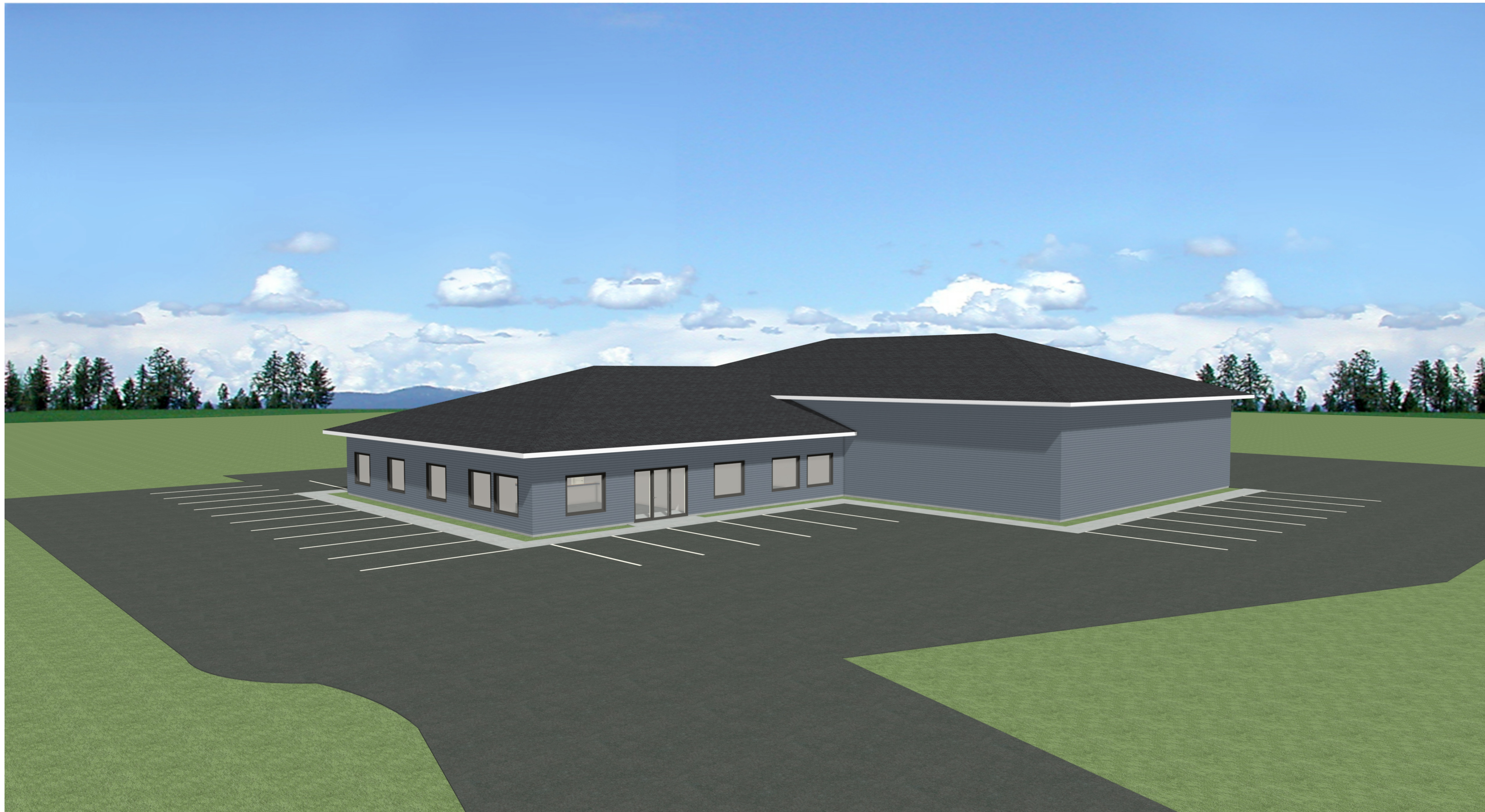


DENYON HOMES - NEW OFFICE CONCEPT



COMMERCIAL BUILDING

PRELIMINARY SET

New Office Concept

Mosinee, WI

Denyon Homes
5309 Schofield Ave.
Weston, WI 54476
715.574.6005
www.denyonhomes.com

Denyon

HOMES

Rev 1	-
Rev 2	-
Rev 3	-
Rev 4	-
Rev 5	-
Rev 6	-

DATE:

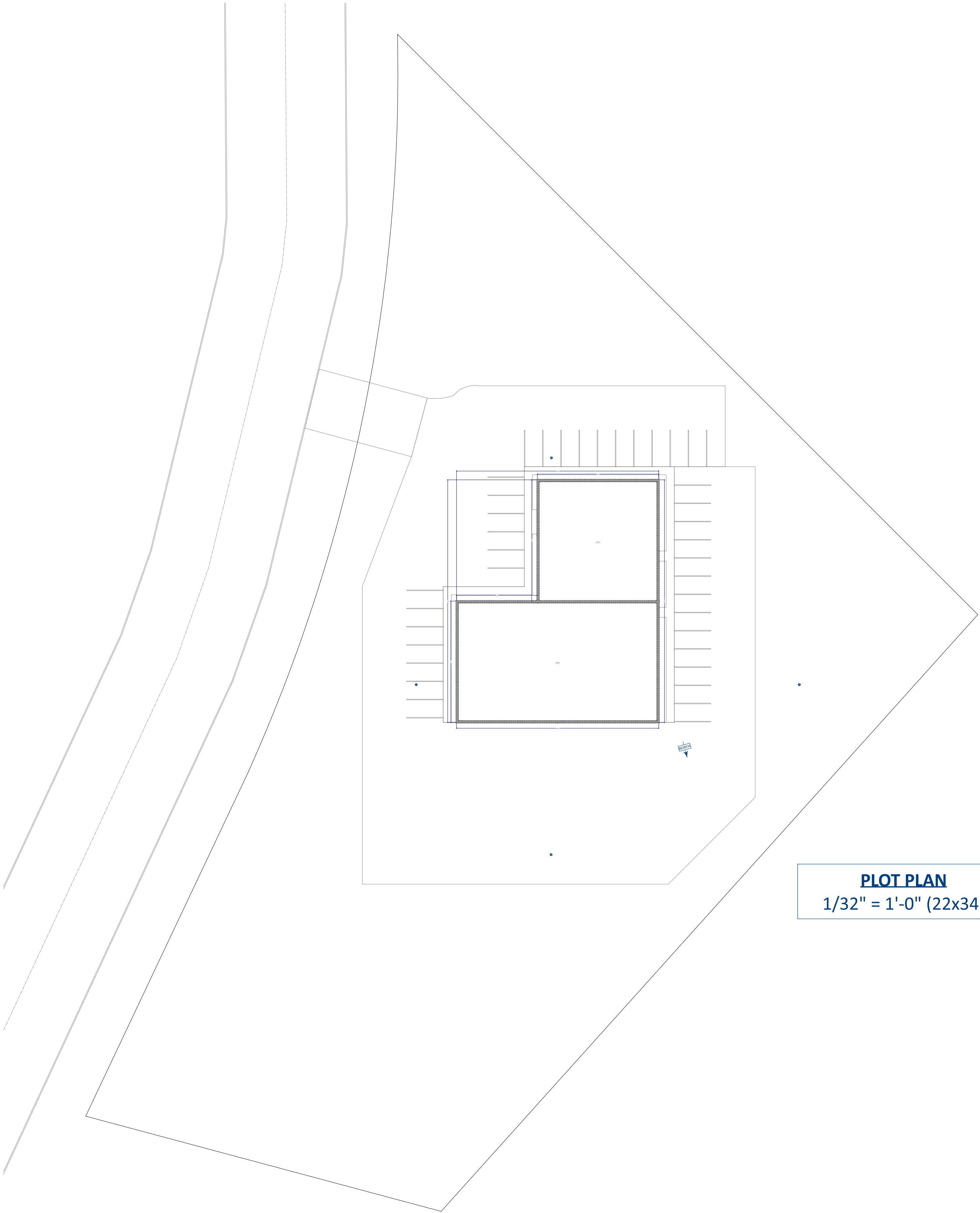
4/11/2023

DRAWN BY:

JDG

SHEET:

A-1



PLOT PLAN
1/32" = 1'-0" (22x34)

Denyon Homes

5309 Schofield Ave.

Weston, WI 54476

715.574.6005

www.denyonhomes.com

Denyon

HOMES

Rev 1	-
Rev 2	-
Rev 3	-
Rev 4	-
Rev 5	-
Rev 6	-

New Office

Concept

Mosinee, WI

COMMERCIAL BUILD

PRELIMINARY SET

DATE:

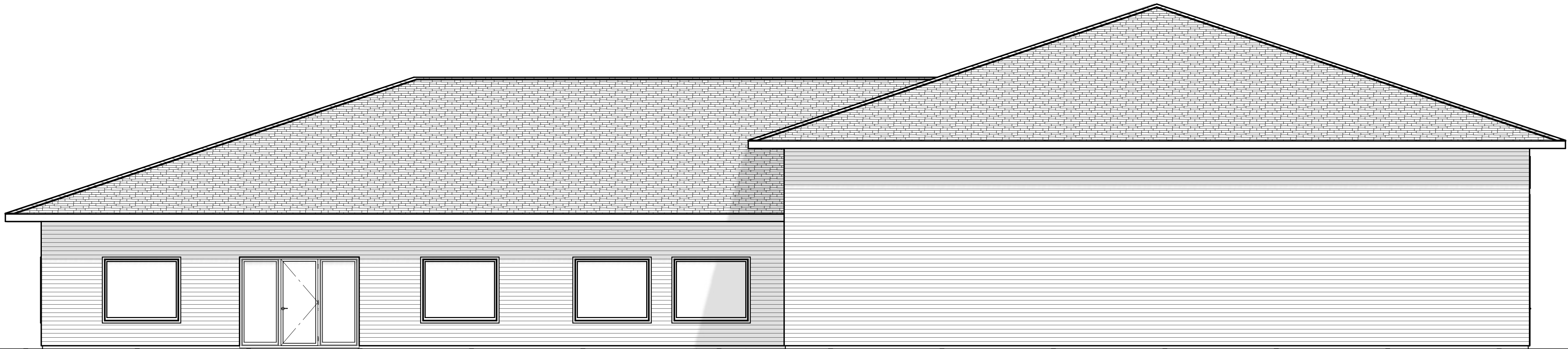
4/11/2023

DRAWN BY:

JDG

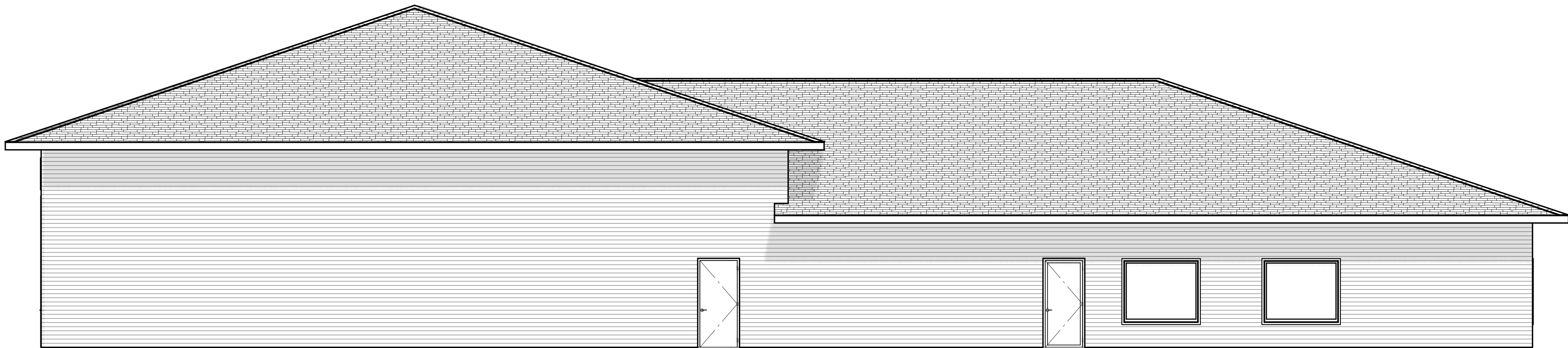
SHEET:

A-2



FRONT ELEVATION

3/16" = 1'-0" (22x34)



REAR ELEVATION

3/16" = 1'-0" (22x34)

COMMERCIAL BUILD

PRELIMINARY SET

**New Office
Concept**

Mosinee, WI

Denyon Homes
5309 Schofield Ave.
Weston, WI 54476
715.574.6005
www.denyonhomes.com



Rev 1	-
Rev 2	-
Rev 3	-
Rev 4	-
Rev 5	-
Rev 6	-

DATE:

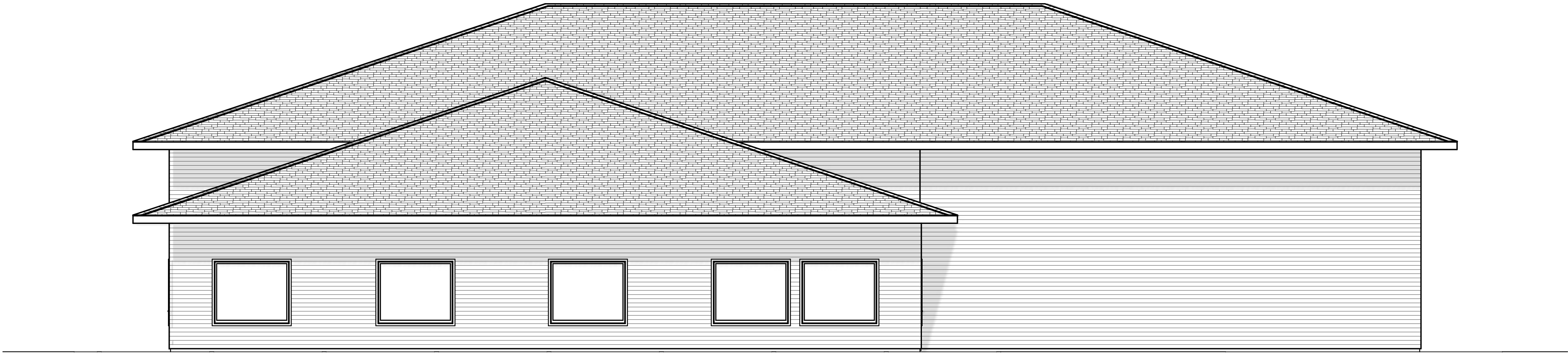
4/11/2023

DRAWN BY:

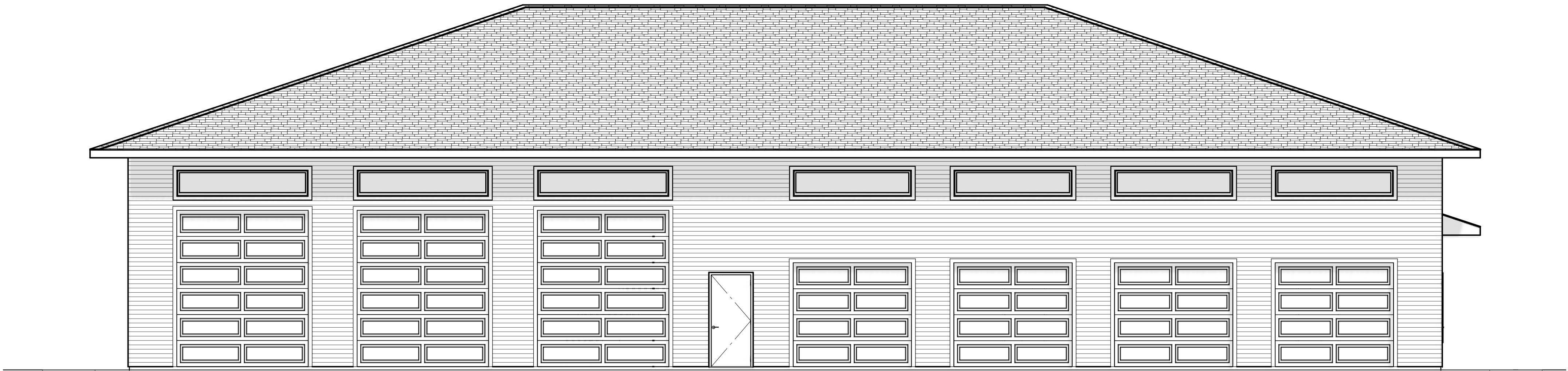
JDG

SHEET:

A-3



LEFT ELEVATION
3/16" = 1'-0" (22x34)



RIGHT ELEVATION
3/16" = 1'-0" (22x34)

Denyon Homes

5309 Schofield Ave.

Weston, WI 54476

715.574.6005

www.denyonhomes.com

Denyon

HOMES

Rev 1	-
Rev 2	-
Rev 3	-
Rev 4	-
Rev 5	-
Rev 6	-

New Office

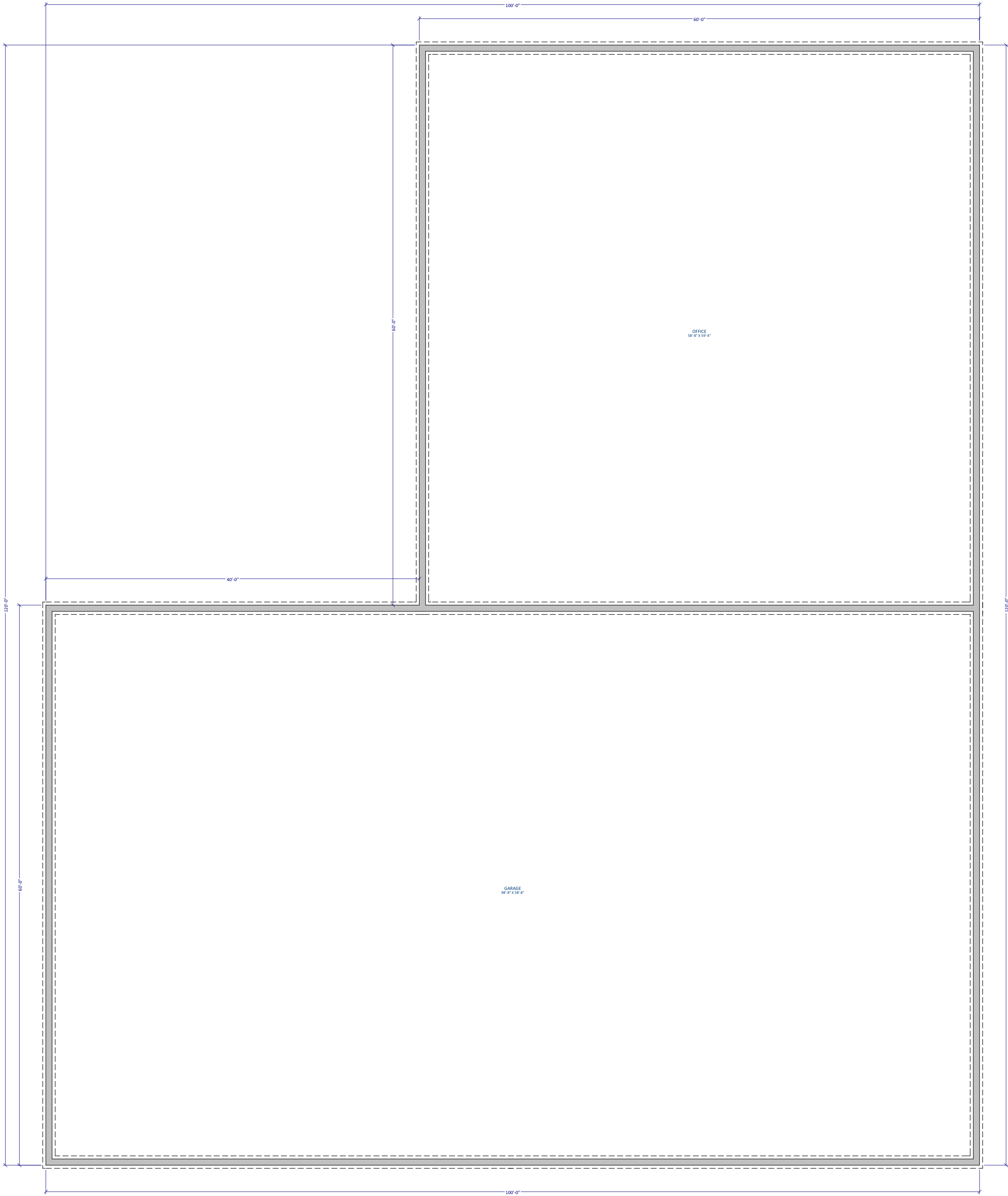
Concept

Mosinee, WI

COMMERCIAL BUILD

PRELIMINARY SET

DATE:
4/11/2023
DRAWN BY:
JDG
SHEET:
A-4



FOUNDATION PLAN
1/8" = 1'-0" (22x34)
Finished Square Footage: ---
4'-0" FOUNDATION WALL HEIGHT
Dimensions are Framing to Framing
Headers or Beams sized by Supplier





Denyon Homes

5309 Schofield Ave.
Weston, WI 54476
715.574.6005
www.denyonhomes.com

Rev 1	-
Rev 2	-
Rev 3	-
Rev 4	-
Rev 5	-
Rev 6	-

New Office
Concept

Mosinee, WI

COMMERCIAL BUILD

PRELIMINARY SET



1ST FLOOR PLAN
1/8" = 1'-0" (22x34)

Floor Square Footage: ----
Garage Square Footage: ----
Screen Porch Square Footage: N/A

10'-1 1/8" Wall Heights (u.n.o.) at
Offices
16'-0" Wall Heights at Shop
84" Header Height (u.n.o.)

Dimensions are Framing to Framing
Headers sized by Supplier



COMMERCIAL BUILD

PRELIMINARY SET

New Office Concept

Mosinee, WI

Denyon Homes

5309 Schofield Ave.
Weston, WI 54476
715.574.6005
www.denyonhomes.com

Denyon HOMES

Rev 1	-
Rev 2	-
Rev 3	-
Rev 4	-
Rev 5	-
Rev 6	-

DATE:

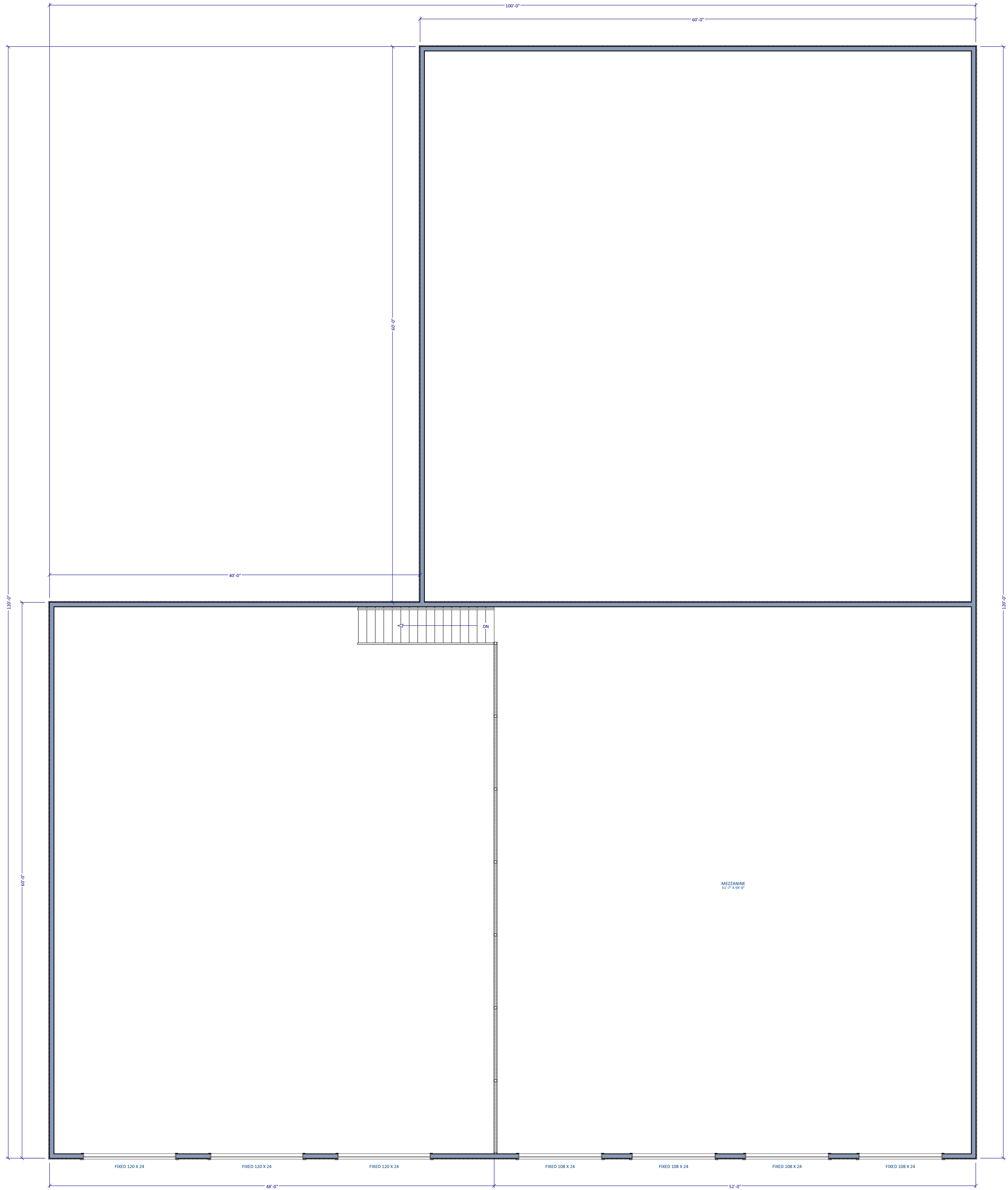
4/11/2023

DRAWN BY:

JDG

SHEET:

A-6



MEZZANINE - 2ND FLOOR PLAN
1/8" = 1'-0" (22x34)
Mezzanine Square Footage: 3120
72'-7/8" Ceiling Height
Dimensions are Framing to Framing
Headers sized by Supplier





Denyon Homes
5309 Schofield Ave.
Weston, WI 54476
715.574.6005
www.denyonhomes.com

Rev 1	-
Rev 2	-
Rev 3	-
Rev 4	-
Rev 5	-
Rev 6	-

New Office
Concept

Mosinee, WI

COMMERCIAL BUILD
PRELIMINARY SET

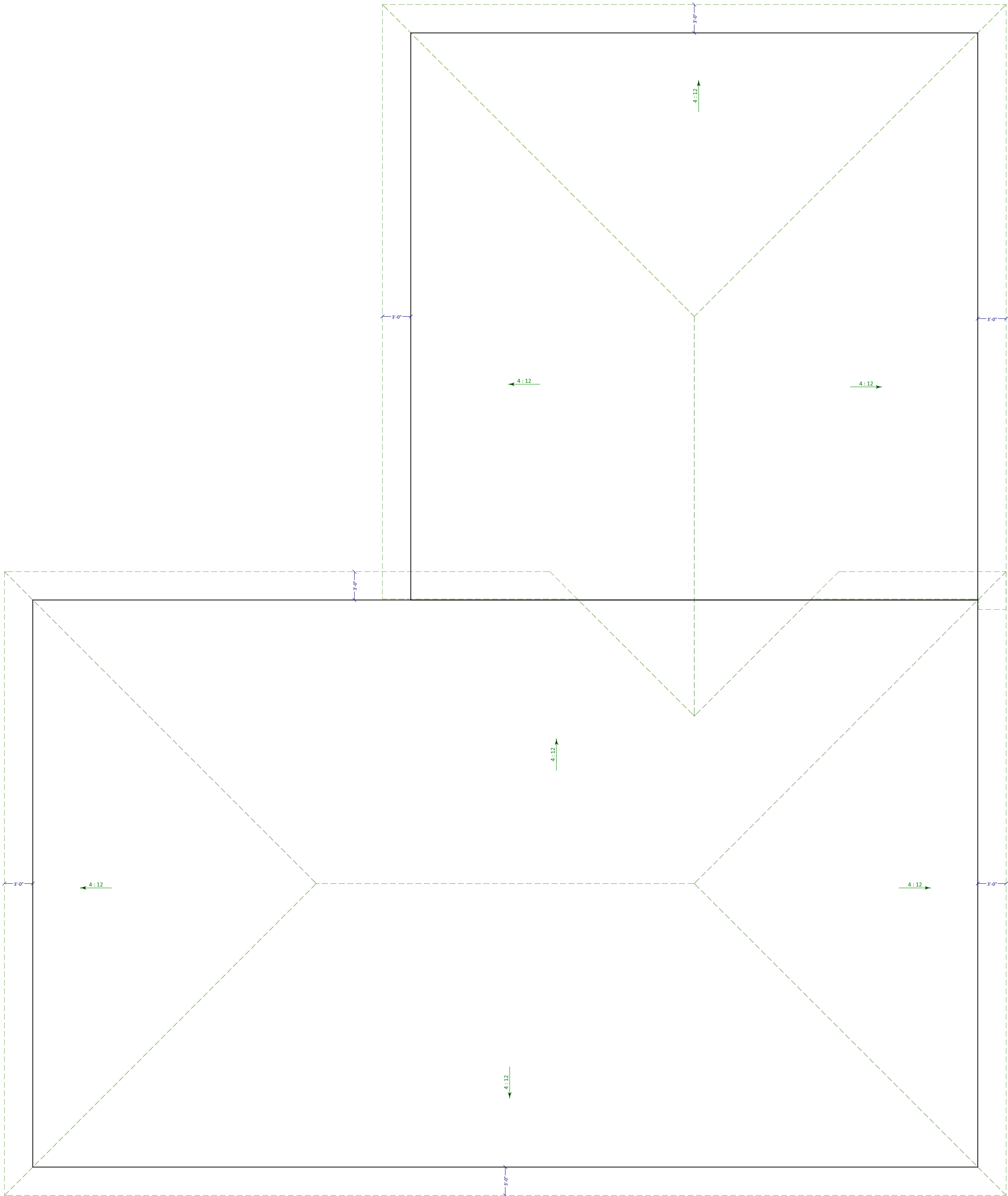
DATE:
4/11/2023

DRAWN BY:
JDG

SHEET:
A-7

GENERAL NOTES

- 1) ALL WORK SHALL BE PERFORMED WITH ALL APPLICABLE LOCAL, STATE, AND NATIONAL CODES AND ORDINANCES AND ALL AUTHORITIES HAVING JURISDICTION
- 2) THE CONTRACTOR SHALL EXAMINE THE PROJECT DRAWINGS AND SHALL NOTIFY THE DESIGNER OF ANY DISCREPANCIES FOUND BEFORE PROCEEDING WITH THE WORK.
- 3) THE CONTRACTOR SHALL VERIFY CONDITIONS AT THE SITE AND REPORT ANY DISCREPANCIES TO THE DESIGNER BEFORE PROCEEDING WITH THE WORK.
- 4) EACH CONTRACTOR SHALL INCLUDE LABOR, MATERIALS, TOOLS, EQUIPMENT, ETC. FOR THE COMPLETE CONSTRUCTION OF THE WORK INDICATED AS SPECIFIED BY THE DRAWINGS AND SPECIFICATIONS, UNLESS OTHER ARRANGEMENTS HAVE BEEN MADE BETWEEN CONTRACTOR AND CUSTOMER.
- 5) MATERIALS AS SPECIFIED ON DRAWINGS AND CONTRACTUAL DOCUMENTS SHALL BE USED. THE CONTRACTOR SHALL BE RESPONSIBLE FOR ALL DETAILING AND COORDINATION IN CONJUNCTION WITH SUBSTITUTIONS MADE TO SPECIFIED MATERIALS.
- 6) VIZION DESIGN GROUP SHALL NOT BE RESPONSIBLE FOR CONSTRUCTION MEANS, METHODS, TECHNIQUES, SEQUENCES OR PROCEDURES, OR FOR SAFETY PRECAUTIONS AND PROGRAMS IN CONNECTION WITH THE WORK OR FOR THE ACTS OR OMISSIONS OF THE CONTRACTOR, SUB-CONTRACTORS, OR ANY OTHER PERSONS PERFORMING THE WORK OR FOR THE FAILURE OF ANY OF THEM TO CARRY OUT THE WORK IN ACCORDANCE WITH THE INTENT OF THE CONTRACT DOCUMENTS. ALL PLUMBING, MECHANICAL, AND ELECTRICAL WORK IS TO BE COORDINATED BETWEEN THE TRADES AS PART OF THEIR INSTALLATION LAYOUT.
- 7) CONTRACTOR SHALL PROVIDE ADEQUATE BRACING AND/OR SHARING TO ENSURE
- 8) STRUCTURAL STABILITY OF BUILDING DURING CONSTRUCTION.
- 9) ALL MATERIAL FINISHES AND STYLES INCLUDING BUT NOT LIMITED TO EXTERIOR SIDING,WINDOWS, EXTERIOR TRIM, AND INTERIOR AND EXTERIOR MILLWORK, ETC. SHALL BE APPROVED BY CUSTOMER.
- 10) DO NOT SCALE THE DRAWINGS. WRITTEN DIMENSIONS ALWAYS TAKE PRECEDENCE OVER SCALED DIMENSIONS.
- 11) THE CONTRACTOR SHALL VERIFY ALL DIMENSIONS AND/OR DISCREPANCIES IN PLAN AND REPORT ERRORS TO VIZION DESIGN GROUP PRIOR TO COMMENCEMENT OF THE WORK, AND TO BE RESPONSIBLE FOR SAME.
- 12) PRIOR TO THE START OF CONSTRUCTION, THE CONTRACTOR SHALL VERIFY THE REQUIRED DESIGN LOADS WITH GOVERNING CODES AND SITE CONDITIONS. VERIFY WITH THE LOCAL BUILDING AGENCIES THE WIND, SEISMIC, SNOW, AND OTHER SPECIAL LOADING CONDITIONS. VIZION DESIGN GROUP SHALL BE NOTIFIED OF ALL DISCREPANCIES.
- 13) IN NO CASE SHALL WORKING DIMENSIONS BE SCALED FROM PLANS, SECTIONS, OR DETAILS ON DRAWINGS.
- 14) ALL DIMENSIONS TO OPENINGS ARE ROUGH FRAMING UNLESS NOTED OTHERWISE.
- 15) ALL DIMENSIONS TO STUD PARTITIONS ARE TO THE FACE OF STUD UNLESS NOTED OTHERWISE.
- 16) CEILING HEIGHT DIMENSIONS ARE FROM FLOOR SHEATHING TO UNDERSIDE OF ROOF TRUSS OR FLOOR JOIST.
- 17) DETAILS MARKED "TYPICAL" SHALL APPLY IN ALL CASES UNLESS NOTED OTHERWISE.
- 18) WHERE NO SPECIFIC DETAIL IS SHOWN, THE FRAMING OR CONSTRUCTION SHALL BE IDENTICAL OR SIMILAR TO THAT INDICATED FOR LIKE CASES OF CONSTRUCTION ON THE PROJECT.
- 19) FOLLOW ALL MANUFACTURER'S RECOMMENDED SPECIFICATIONS AND INSTALLATION PROCEDURES UNLESS OTHERWISE DIRECTED.
- 20) PROVIDE ADEQUATE ANCHORAGE, BLOCKING, BACKING, AND FRAMING FOR LIGHT FIXTURES, ELECTRICAL UNITS, HVAC EQUIPMENT, ETC.
- 21) SLOPE ALL CONCRETE WALKS AWAY FROM EXTERIOR DOORS A MAXIMUM OF 2% TO PREVENT WATER FROM RUNNING OR BEING BLOWN UNDER DOORWAYS AND TO PREVENT STANDING WATER FROM ACCUMULATING IN FRONT OF DOORS.
- 22) PROVIDE FIRE-BLOCKING AND DRAFT-STOPPING IN SPACES CREATED BY CHASES, FURRING, ETC. IN ACCORDANCE WITH THE APPLICABLE CODES.
- 23) SMOKE ALARMS SHALL BE INSTALLED IN ACCORDANCE WITH THE APPLICABLE CODES.
- 24) WINDOW DESIGN INTENDED TO BE IN COMPLIANCE WITH APPLICABLE CODES IN REGARDS TO EGRESS AND SAFETY GLASS. ALL WINDOW SIZES AND REQUIREMENTS TO BE VERIFIED BY CONTRACTOR WITH MANUFACTURER TO ENSURE COMPLIANCE WITH APPLICABLE CODES.



ROOF LAYOUT
1/8" = 1'-0" (2x34)

NOTES
30" EAVE OVERHANGS TYPICAL
(unless noted otherwise)
30" FASCIA HEIGHTS
FASCIA TO ALIGN AS SHOWN

COMMERCIAL BUILD

PRELIMINARY SET

New Office
Concept

Mosinee, WI

Denyon Homes
5309 Schofield Ave.
Weston, WI 54476
715.574.6005
www.denyonhomes.com

Denyon
HOMES

Rev 1	-
Rev 2	-
Rev 3	-
Rev 4	-
Rev 5	-
Rev 6	-

DATE:

4/11/2023

DRAWN BY:

JDG

SHEET:

A-8