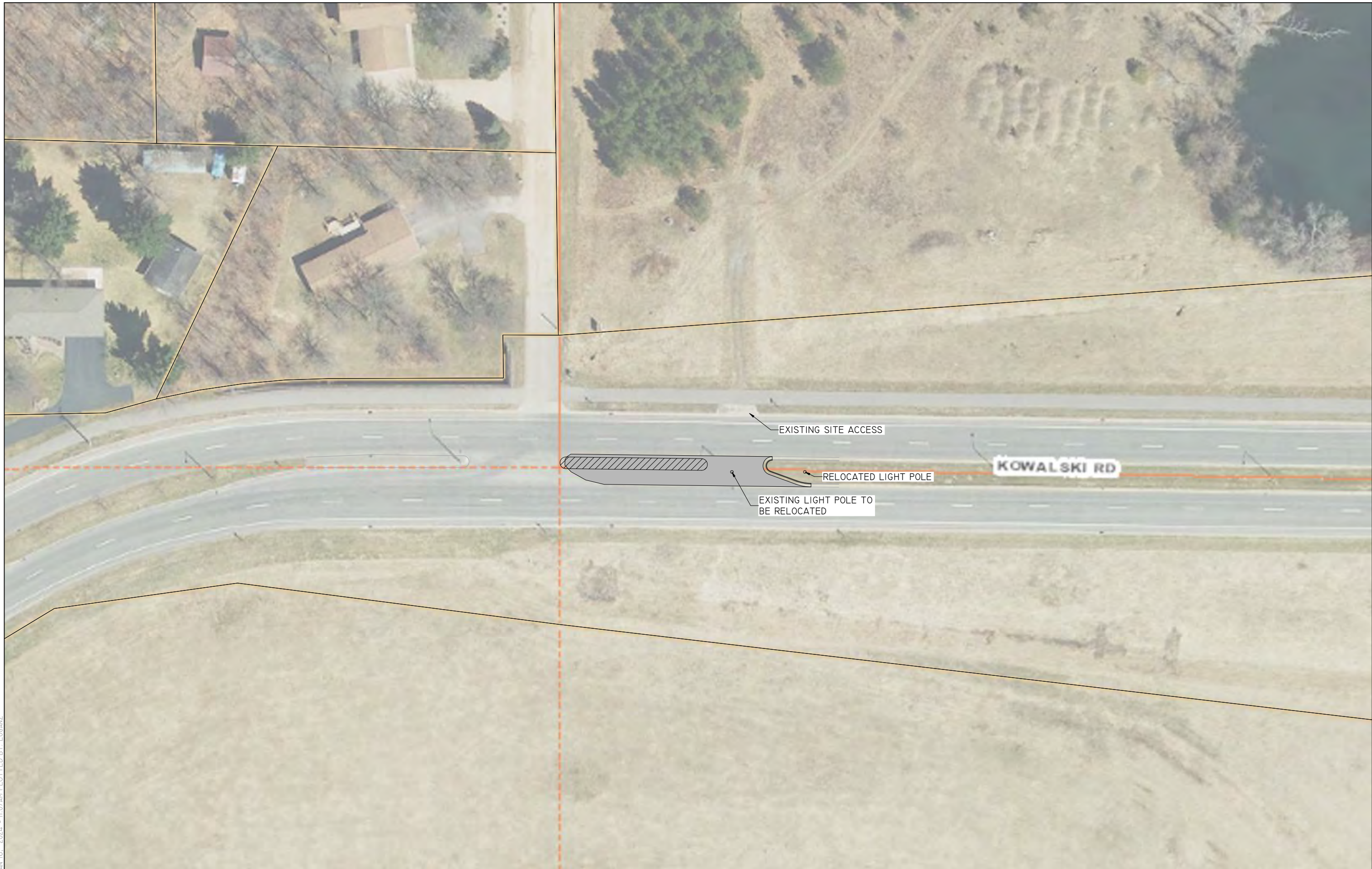


DRAWING FILE: \\REI\FP\PROJECTS\211200-11299\11280 - PGA - Kowalski Road\Drawing\Design\11280-Design - OPTION 2.DWG LAYOUT: DESIGN (2)
 PLOTTED: JAN 16, 2024 - 11:07AM PLOTTED BY: LOGANZ

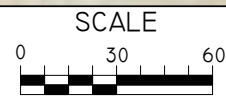


REI Engineering, INC.
 4080 N. 20TH AVENUE
 WAUSAU, WISCONSIN 54401
 PHONE: 715.675.9784, FAX: 715.675.4060
 EMAIL: MAIL@REIENGINEERING.COM



REI

**CIVIL & ENVIRONMENTAL
 ENGINEERING, SURVEYING**



DATE	REVISION	BY	CHKD

SURVEYED BY:	DESIGNED BY: CCS	SURVEY DATE:
SURVEY CHKD BY:	CIVIL CHKD BY: JJB	CIVIL DATE: 01/12/24
SURVEY APVD BY:	CIVIL APVD BY: JJB	DRAWN BY: NAP

LEFT TURN LANE CONCEPT OPTION 2
 KOWALSKI ROAD ACCESS
 ROTHSCHILD, WISCONSIN



REI No. 11280
 SHEET LTL