



**CITY OF KOTZEBUE
RESOLUTION NO. 24-70**

A RESOLUTION OF THE CITY COUNCIL OF THE CITY OF KOTZEBUE *NUNC PRO TUNC* DECLARING A DISASTER AS A RESULT OF THE 2024 OCTOBER WEST COAST STORM.

WHEREAS, the City of Kotzebue (“City”) and its residents suffered a severe, sudden and catastrophic 2024 October West Coast Storm that, among other things, flooded the City, destroyed the City’s Small Boat Harbor, destroyed the City’s North Tent City Subsistence Camping Area, seriously damaged and destroyed many roads in the City, closed the City’s airport for several days, destroyed a portion of the City’s sewage lagoons and overwhelmed the City’s sewage system;

WHEREAS, the same 2024 October West Coast Storm also, among other things, destroyed homes, flooded homes, damaged sewer and water lines to/from homes, destroyed vehicles, and caused residents to evacuate their homes and go to improvised emergency shelters in the community provided by Maniilaq, NANA, KEA and the Northwest Arctic Borough School District;

WHEREAS, the City Manager provided under her authority two disaster declaration letters to the Northwest Arctic Borough Mayor, copies of which are attached hereto as Exhibits “A” and “B” respectively;

WHEREAS, the Northwest Arctic Borough declared a disaster as a result of the 2024 October West Coast Storm as set forth in Exhibit “C” attached hereto and entered into a MOA with the City regarding disaster responsibilities as set forth in Exhibit “D”; and,

WHEREAS, the Governor issued a Disaster Declaration as set forth in Exhibit “E” attached hereto.

//
//
//
//
//
//
//
//

//

Resolution 24-70, November 7, 2024 RCCM
***Nunc Pro Tunc* Disaster Declaration for 2024 October West Coast Storm**
Page 2 of 2

NOW, THEREFORE, BE IT RESOLVED, that the City Council of the City of Kotzebue *nunc pro tunc* confirms the City Manager’s earlier Disaster Declarations and acknowledges the immediate assistance of our local and regional partners, the State of Alaska, the Alaska National Guard and many local residents for their collective and individual responses to this severe, sudden and catastrophic 2024 October West Coast Storm.

PASSED AND APPROVED by a duly constituted quorum of the City Council of the City of Kotzebue, Alaska, this 7th day of November, 2024.

CITY OF KOTZEBUE

Derek Haviland-Lie, Mayor

[SEAL]

ATTEST:

Paeton Schaeffer, City Clerk

Attachment: Exhibit “**A**” – First City Manager’s Disaster Declaration (with photos) [3 pages]
Exhibit “**B**” – Second City Manager’s Disaster Declaration (with photos) [6 pages]
Exhibit “**C**” – NWAB Disaster Declaration [pages]
Exhibit “**D**” – City and NWAB MOA [2 pages]
Exhibit “**E**” – Governor’s Disaster Declaration [pages]



Tessa Baldwin, City Manager
P.O. Box 46
Kotzebue, Alaska 99752
(907) 442-3401 [City Hall]
(907) 442-3742 [City Hall-fax]
tbaldwin@kotzebue.org

October 22, 2024

Mayor Dickie Moto
Northwest Arctic Borough
P.O. Box 1110
Kotzebue, Alaska 99752-1110

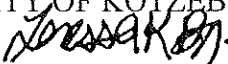
Re: Disaster Declaration and Request for Disaster Relief from the City of Kotzebue re: flooding

Dear Mayor Moto:

As you know, the City of Kotzebue has experienced sudden, catastrophic flooding in the last several days due to high winds and water surges. See, photos attached to this letter. This unprecedented flooding has created a public health emergency resulting in, among other things, evacuations of residents from the impacted areas. The City of Kotzebue and the Kotzebue IRA have jointly declared an emergency situation. See, Joint Emergency Declaration attached to this letter.

Pursuant to Northwest Arctic Borough Code 10.04.030 [Duties of the Department of Public Services] and Northwest Arctic Borough Code Chapter 12.16 [Office of Emergency Management] and Alaska Statute 26.23.140 [Local disaster emergencies], the City of Kotzebue would respectfully request that you declare a Disaster Emergency for Kotzebue because of the sudden, catastrophic flooding in the last several days. This would allow the City to start the process of securing funds in excess of its current financial resources to remediate the serious consequences of this sudden, catastrophic flooding in the last several days. Such remediation will undoubtedly be in the six-figure-plus range, but any meaningful estimate is impossible at this time due to the sudden nature of this disaster.

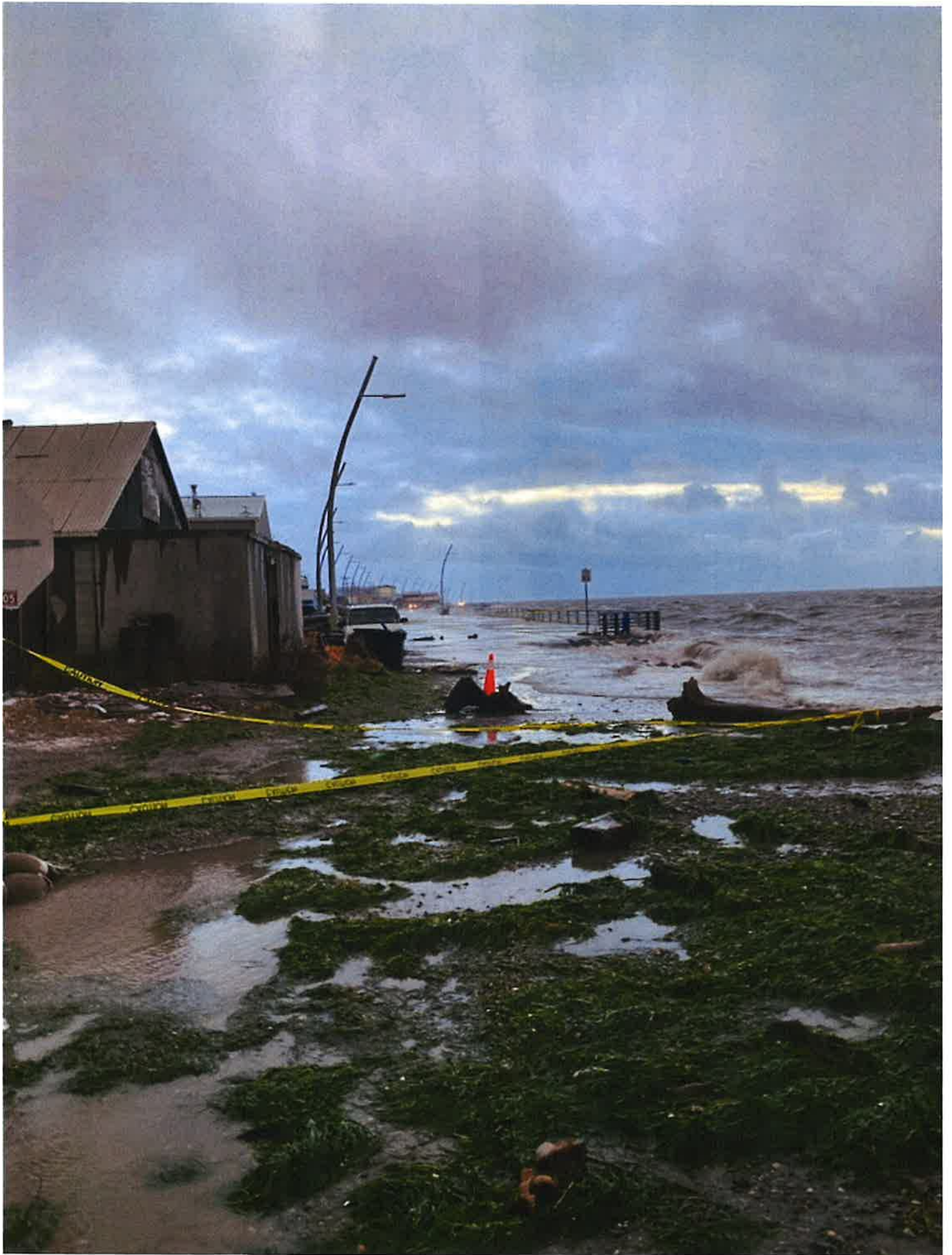
As the person responsible for the City's Disaster Emergency Services, pursuant to the Kotzebue Municipal Code 2.41.010, I will also present a Disaster Declaration Resolution to the City Council at our next RCCM on November 7th and forward that fully executed Resolution to your attention.

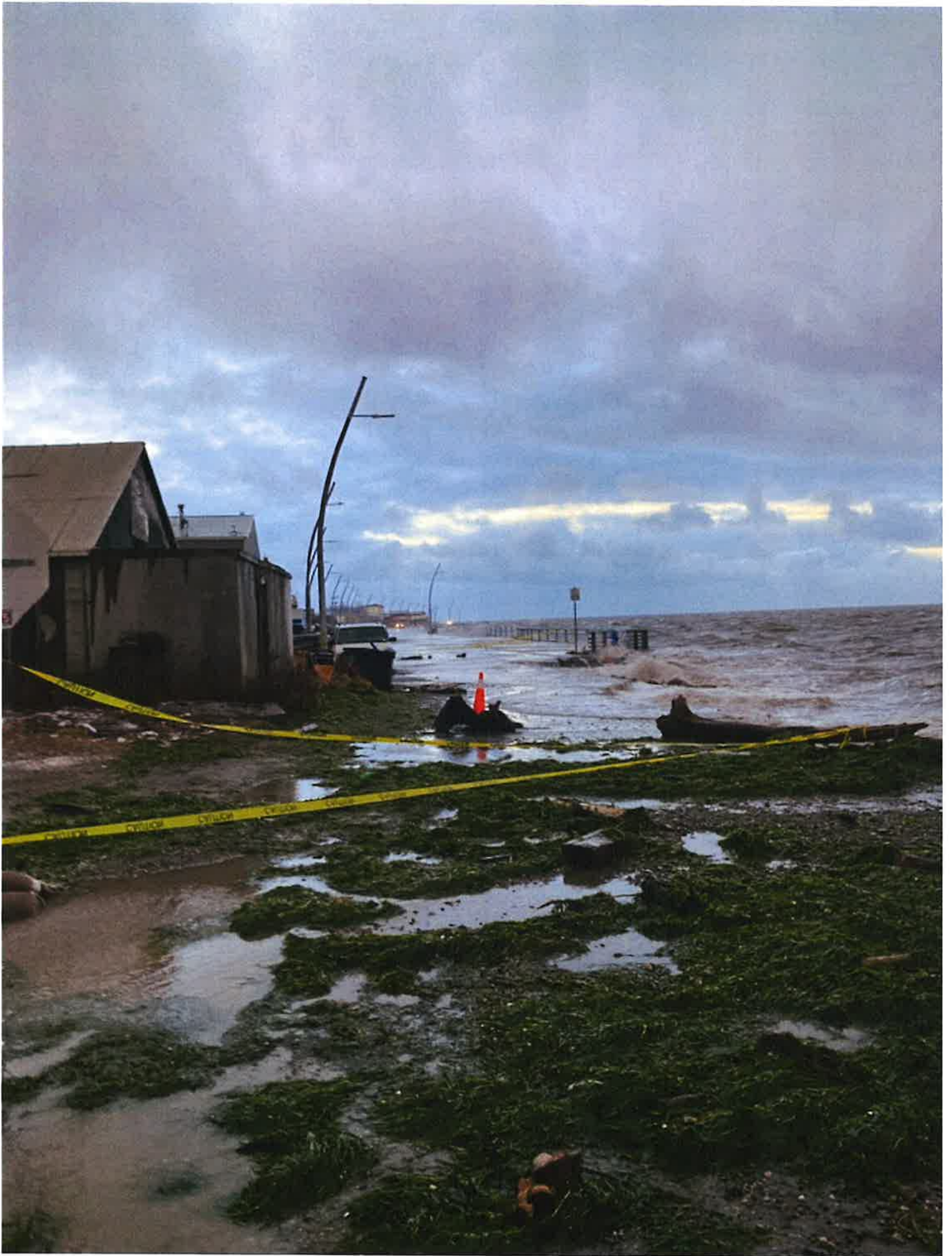
Sincerely,
CITY OF KOTZEBUE


Tessa Baldwin
City Manager

Attachments: photos and Joint Emergency Declaration

cc: Mayor and City Council Members







Tessa Baldwin, City Manager
P.O. Box 46
Kotzebue, Alaska 99752
(907) 442-3401 [City Hall]
(907) 442-3742 [City Hall-fax]
tbaldwin@kotzebue.org

October 22, 2024
[at 8:00pm AKDT]

Mayor Dickie Moto
Northwest Arctic Borough
P.O. Box 1110
Kotzebue, Alaska 99752-1110

Re: Disaster Declaration and Request for Disaster Relief from the City of Kotzebue re: flooding
[Supplemental letter and photos]

Dear Mayor Moto:

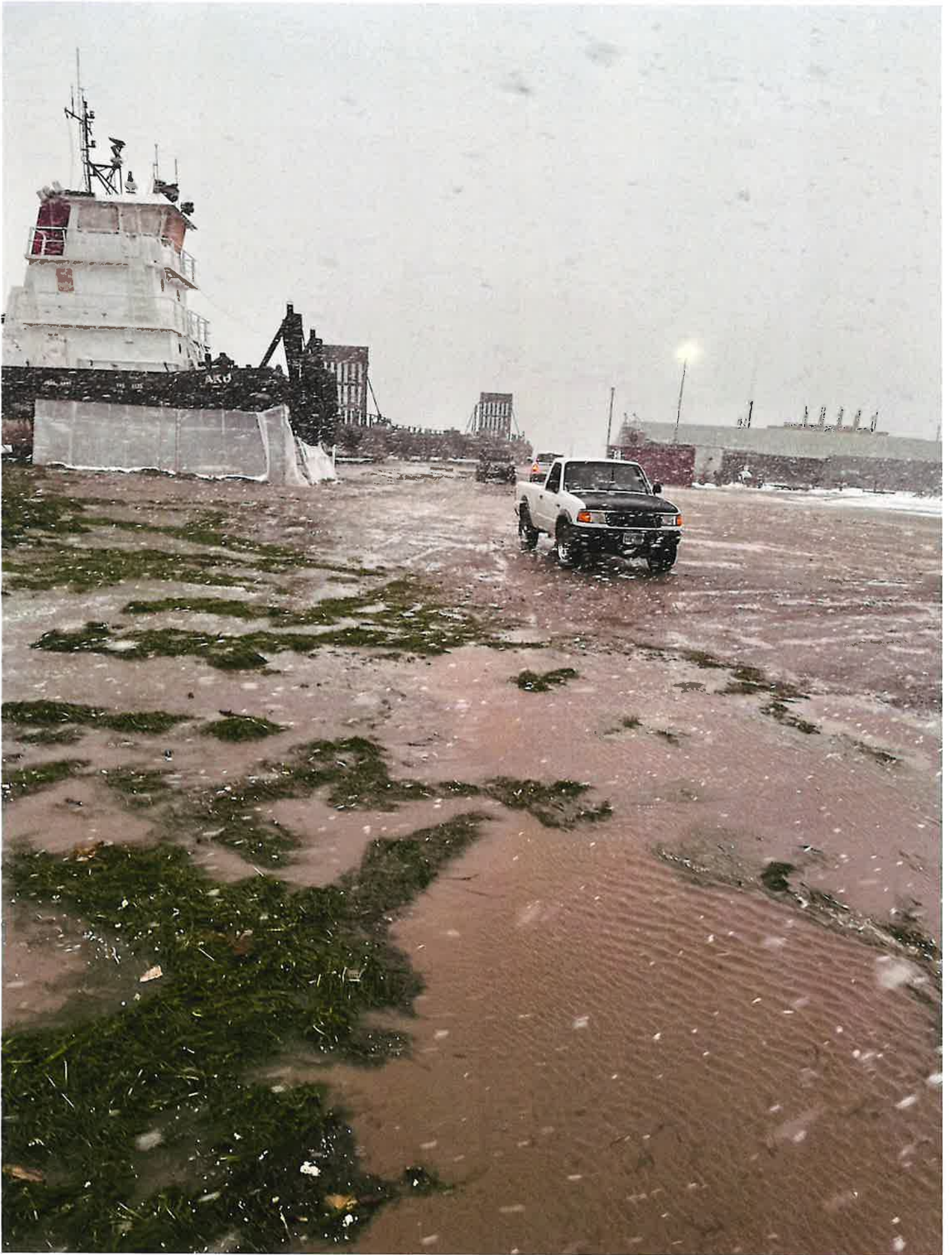
As I prepare this letter at 8:00pm AKDT this date, we are experiencing an additional storm surge and high winds with even more significant flooding, yet more evacuations and major damage to roadways and other infrastructure in Kotzebue. See additional photos attached to this letter. Please add this letter and these photos to my earlier letter this date.

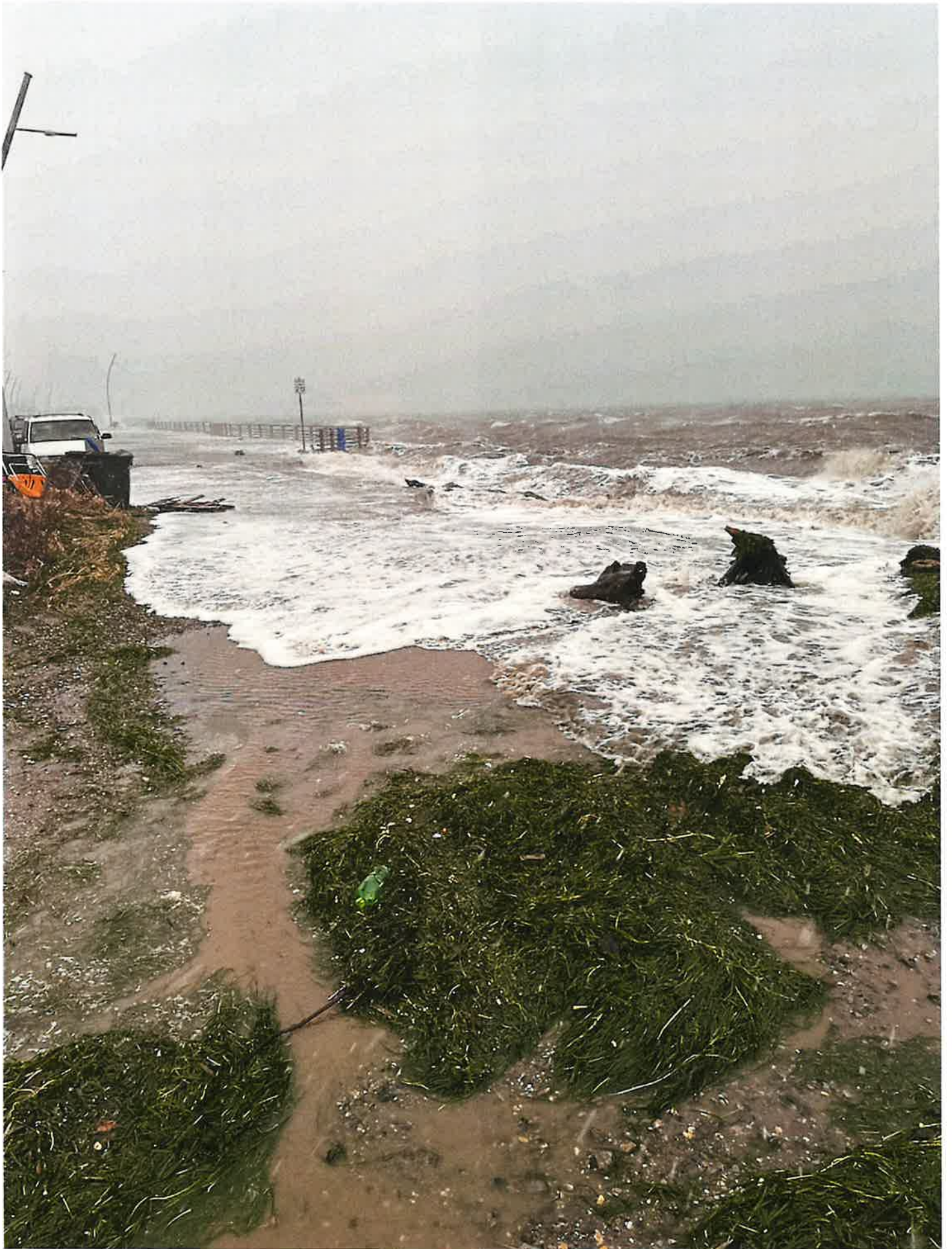
Sincerely,
CITY OF KOTZEBUE
Tessa Baldwin

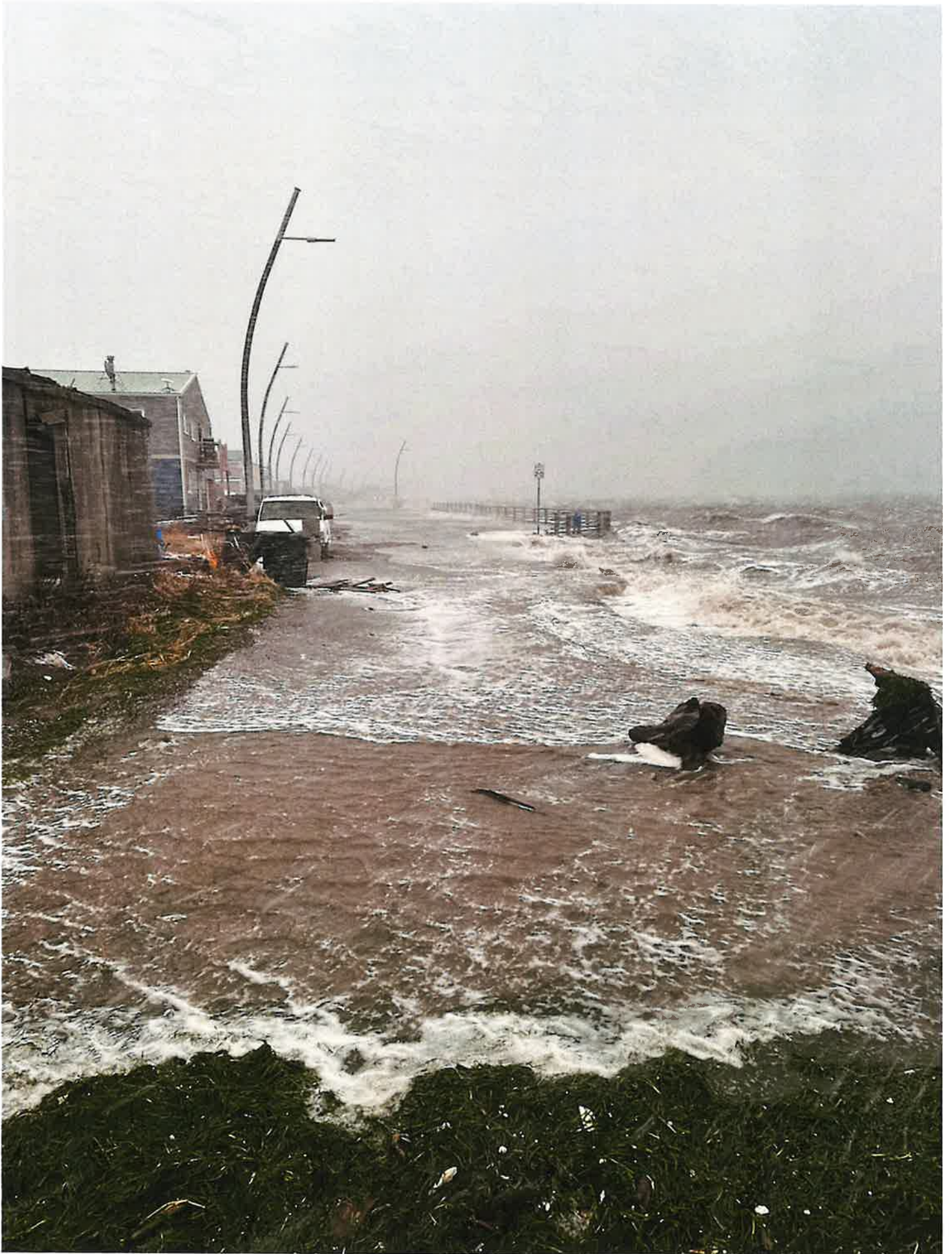
Tessa Baldwin
City Manager

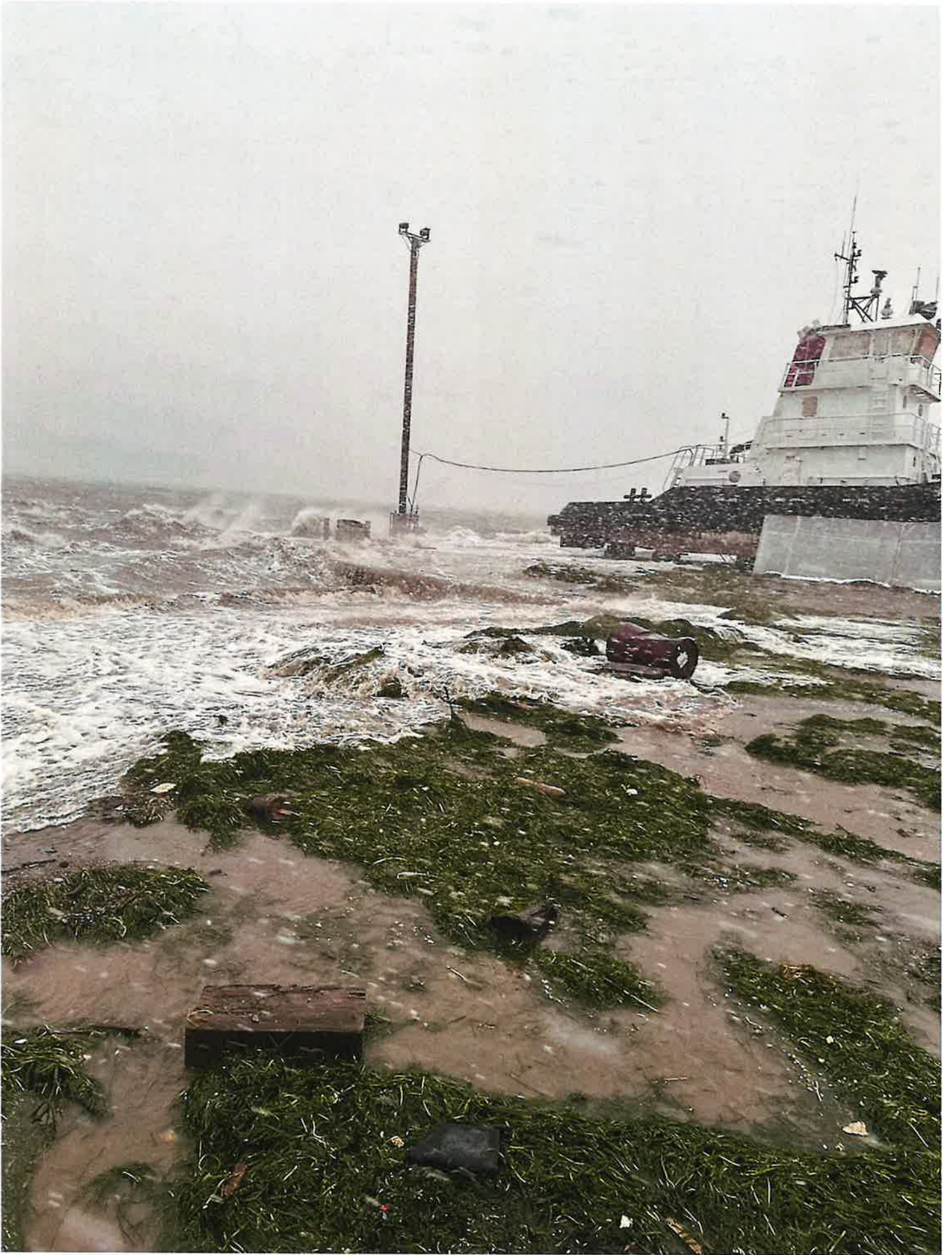
Attachments: additional photos

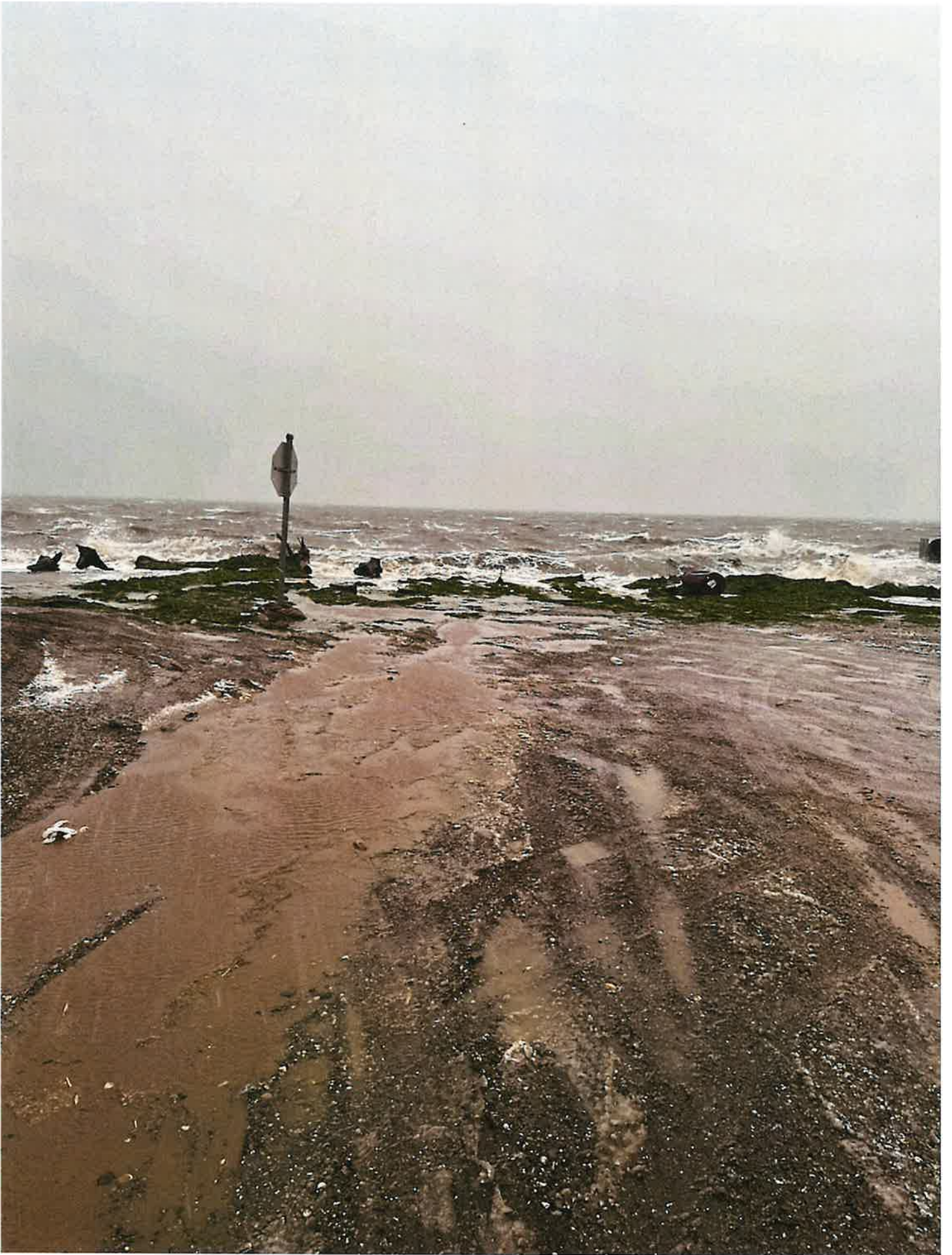
cc: Mayor and City Council Members













SEVERE FLOODING CAUSES MAJOR IMPACTS IN KOTZEBUE

FOR IMMEDIATE RELEASE

Contact: Rachel Belamour, Public Relations, City of Kotzebue (907) 442-3401
customerservice@kotzebue.org

Kotzebue, Alaska (October 23, 2024, 11:59 AM) — The City of Kotzebue and the Northwest Arctic Borough are actively responding to the recent storm that caused significant flooding. Some areas of town saw upwards to 5 feet of water. Many homes were evacuated, and infrastructure was severely impacted by the flood.

A total of 80 individuals were evacuated due to storm impacts. Of these, 60 evacuees have been sheltered at the Kotzebue gymnasium, with an additional 10 housed at the Kotzebue Electric Association and 10 at Maniilaq Health Center housing. All evacuees are receiving food, bedding, and other essential supplies thanks to the combined efforts of local businesses and organizations.

Confirmed infrastructure damage includes:

- One confirmed home occupied by individuals collapsed into Kotzebue Sound.
- The City of Kotzebue boat harbor has been destroyed and is no longer present.
- The north tent city has collapsed.
- Several roads have been washed away, including those near the Crowley Dock and the first and second bridges.
- The Kotzebue airport remains closed as both runways are underwater due to severe flooding. Flights have not been in or out of Kotzebue for 48 hours.

The City of Kotzebue and Northwest Arctic Borough (NWAB) have declared a disaster in response to the storm. Governor Mike Dunleavy has also declared a disaster at the state level. The NWAB has been instrumental in facilitating the displaced evacuees camp, providing shelter and supplies to 60 people.

Local businesses and organizations have stepped up to assist in the response. Little Louie's generously donated 10 pizzas, and NANA along with NWABSD contributed bedding. Evacuees are receiving meals and essential supplies during their stay.

The City of Kotzebue has begun assessing the damage to streets and infrastructure, and several lift stations were placed on manual operation due to overcapacity. Four additional laborers are being hired to assist with the cleanup of streets and public spaces. Meanwhile, the Planning Department is documenting the events and conducting a survey to assess the needs of the evacuees.

The Kotzebue IRA (Tribe) is coordinating all donations and meeting the immediate needs of individuals impacted by the storm. Any donations or inquiries related to support can be directed to Paulette Schuerch at paulette.schuerch@qira.org.

Local Organization Contributions:

- Maniilaq Association: Sheltered 10 individuals, mostly elders, and has expressed a willingness to assist in any capacity.
- NANA Regional Corporation: Provided bedding and maintained their facilities near the shoreline, offering support where needed.
- Kotzebue Electric Association (KEA): Reported no power outages and housed 10 evacuees in their facility.
- Little Louies: Delivered Pizza to evacuated individuals at the High School gym.

The City of Kotzebue, in coordination with several partners, is actively assessing all damages caused by the storm. We are asking all residents to shelter in place and avoid unnecessary travel until further notice. Mayor Derek Haviland Lie emphasized, "We are currently asking residents to shelter in place and travel only when necessary. The safety and well-being of our residents is most important." Please limit movement and stay indoors to ensure everyone's safety as response teams work to address the damage and restore essential services.

Next Steps:

Evacuees will be surveyed to determine their immediate needs and to identify both short-term and long-term requirements for support. Elders and infants will be relocated to the Brice Construction Camp. The Red Cross will arrive in Kotzebue tomorrow to assist with further relief efforts.

The City of Kotzebue, the Northwest Arctic Borough and the Kotzebue IRA are committed to ensuring the safety and well-being of all residents. We extend our gratitude to the many organizations and individuals who have come together to support those affected by the storm.

Contacts for Support and Information:

- **City of Kotzebue Point of Contact:**
Tessa Baldwin, City Manager – tbaldwin@kotzebue.org
Rachel Belamour, Public Information Officer – rbelamour@kotzebue.org
- **Survey of Evacuees and Damage Assessment:**
Sam Camp, Planning Director – satkinson@kotzebue.org
- **Shelter-Related Issues:**
Chris Hatch – chatch@nwabor.org
- **Donations:**
Paulette Schuerch – paulette.schuerch@qira.org