

KOTZEBUE WASHETERIA

KOTZEBUE, ALASKA

PREPARED FOR:
 CITY OF KOTZEBUE
 PO BOX 46
 KOTZEBUE, AK 99752



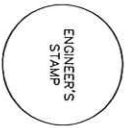
PREPARED BY:

5015 Business Park Blvd, Suite 4000
 Anchorage, Alaska 99503
 907/566-5500

OTHER SUBS
 ADDRESS
 CITY, STATE
 CONTACT INFO
 LOGO

SHEET INDEX

SHEET NO.	TITLE
C-01	COVER SHEET
C--02	LEGEND, ABBREVIATIONS, NOTES
C-01	SURVEY CONTROL
C--02	SITE LAYOUT PLAN
C--03	SITE SECTIONS AND DETAILS
C--04	UTILITY DETAILS
A100	GENERAL NOTES, ABBREVIATIONS
A101	FLOOR PLAN
A102	REFLECTED CEILING PLAN
A103	ROOF PLAN
A201	BARRIER ELEVATIONS
A202	BARRIER SECTIONS
A301	LIGHTING PLAN, LEGEND, FIXTURE SCHEDULES
A302	LIGHTING DETAILS



35% SUBMITTAL

PROJECT	1528-50231-10
DATE	5/30/2024
SHEET	
	of 10

ABBREVIATIONS	
CF	CUBIC FEET
DIA	DIAMETER
F&I	FINISH AND INSTALL
FPT	FEMALE IRON PIPE THREADED
GA	GAUGE
GFCI	GROUND FAULT CIRCUIT INTERRUPTOR
HDPE	HIGH DENSITY POLYETHYLENE
IN	INCH
MAX	MAXIMUM
MIL	ONE THOUSANDTH OF AN INCH
MIN	MINIMUM
MPT	MALE PIPE THREADED
NOM	NOMINAL
NTS	NOT TO SCALE
OC	ON CENTER
OD	OUTSIDE DIAMETER
PSI	POUNDS PER SQUARE INCH
PVC	POLYVINYL CHLORIDE
ROW	RIGHT-OF-WAY
SCH	SCHEDULE
SDR	STANDARD DIMENSION RATIO
SS	STAINLESS STEEL
SS/4H	SAVITARY SEWER/4ANHOLE
SO	SQUARE
TYP	TYPICAL
W/	WITH

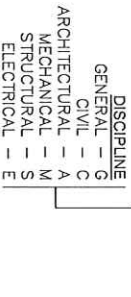
LEGEND	
EXISTING	PROPOSED
	SURVEY MONUMENT
	SURVEY POINT NUMBER
	LIGHT POLE / STREET LIGHT
	UTILITY POLE
	ELECTRIC METER
	GUY ANCHOR
	FIRE HYDRANT
	VALVE
	WATER SERVICE CONNECTION
	SEWER MANHOLE
	SEWER CLEAN OUT
	BOLLARD / GUARD POST
	THERMAL PILE
	OVERHEAD ELECTRIC LINE
	FENCE LINE
	EDGE OF PAVEMENT / DIRT
	MAJOR CONTROL (S)
	RIGHT-OF-WAY CENTER LINE
	PROPERTY LINE
	EASEMENT LINE
	BUILDING OUTLINE
	WATER MAIN
	WATER SERVICE
	SEWER MAIN
	SEWER SERVICE

REFERENCE



DETAIL TITLE

SHEET NUMBERING



GENERAL NOTES

1. THESE PLANS DO NOT SHOW ALL EXISTING SERVICES AND UTILITIES.
2. LOCATIONS OF EXISTING SERVICES AND UTILITIES ARE APPROXIMATE. PRIOR TO STARTING ANY WATER OR SEWER PIPE CONSTRUCTION, CONTRACTOR SHALL PERFORM TEST PITS AND VERIFY THE VERTICAL AND HORIZONTAL LOCATIONS OF ALL EXISTING UTILITIES AND CONDUITS. CONTRACTOR SHALL IMMEDIATELY NOTIFY ENGINEER OF ANY DISCREPANCIES FROM ASSUMED ELEVATIONS.
3. AS-BUILT LOCATION OF THE EXISTING WATER MAIN IS APPROXIMATE. ACTUAL LOCATION MUST BE FIELD DETERMINED DURING CONSTRUCTION.
4. ALL CONSTRUCTION SHALL BE IN ACCORDANCE WITH THE PROJECT SPECIFICATIONS.
5. CONTRACTOR AND CONTRACTOR'S SUPERVISOR SHALL SCHEDULE A MEETING WITH ENGINEER FOR DISCUSSION TO REVIEW AND APPROVE THE CONSTRUCTION SEQUENCE. FIELD NOTES REPORTING ACTIVITIES TAKING PLACE ON THE PROJECT.
6. CONTRACTOR SHALL AS-BUILD ALL UTILITIES ENCOUNTERED IN THE FIELD BY ACTUAL SURVEY METHODS AND PROVIDE FIELD NOTES TO THE ENGINEER WHICH INCLUDE HORIZONTAL AND VERTICAL LOCATIONS OF EACH SUBJECT.
7. ELEVATIONS SHOWN ARE TO PIPE INVERT, FLOW LINE, OR FINISH PAVEMENT SURFACE UNLESS NOTED OTHERWISE.
8. THE CONTRACTOR SHALL FOLLOW ALL CITY DIRECTIONS AND REGULATIONS FOR NOISE, HOURS OF OPERATIONS, AND DUST CONTROL.
9. PIPE BEDDING SHALL BE INSTALLED PER SPECIFICATIONS. TRENCH BACKFILL SHALL BE COMPACTED TO AT LEAST 95% OF MAXIMUM DRY DENSITY.
10. CONTRACTOR SHALL MAINTAIN "AS-BUILT" RECORD DRAWINGS ON A CLEAN SET OF CONSTRUCTION DRAWINGS. THE RECORD SET SHALL BE KEPT CURRENT ON A DAILY BASIS AND SHALL BE AVAILABLE TO THE ENGINEER FOR INSPECTION ON THE JOB SITE. CONTRACTOR SHALL RECORD SURVEY NOTES AND SUBMIT THEM DAILY TO THE ENGINEER.
11. ALL CONSTRUCTION OPERATIONS REQUIRED FOR THIS PROJECT SHALL REMAIN WITHIN EXISTING ROW AND ACQUIRED EASEMENTS, UNLESS OTHERWISE APPROVED IN WRITING BY THE ENGINEER AND THE AFFECTED PROPERTY OWNER. SHALL BE MADE.
12. SHORING OF UTILITY POLES SHALL BE CONSIDERED INCIDENTAL TO THE PROJECT AND NO SEPARATE PAYMENT SHALL BE MADE.
13. CONTRACTOR SHALL COORDINATE WORK ACCORDINGLY. ALL WORK IN CLOSE PROXIMITY TO EXISTING LINES AND PIPES SHALL BE PROTECTED BY SHIELDING, BRACING, AND PROPPING. CONTRACTOR SHALL MAINTAIN AND PROTECT ALL ELECTRICAL FACILITY CLEARANCE REQUIREMENTS OF THE GOVERNING UTILITY. HAND DIGGING IS REQUIRED WITHIN TWO FEET OF BURIED ELECTRICAL CABLE.
14. WATER RESULTING FROM CONTRACTOR'S DEWATERING EFFORT MAY NOT BE DISPOSED OR OTHERWISE DIRECTED INTO EXISTING STORM DRAINS UNLESS REQUIRED PERMITS, INCLUDING BUT NOT LIMITED TO ADEC PERMIT, ARE OBTAINED BY CONTRACTOR. UNDER NO CIRCUMSTANCES WILL THE CONTRACTOR BE ALLOWED TO DIVERT WATER FROM THE EXCAVATION ONTO THE ROADWAYS. CONTRACTOR SHALL PROVIDE A DISPOSAL SITE FOR EXCESS WATER AND SHALL BE RESPONSIBLE FOR OBTAINING THE NECESSARY PERMITS AND APPROVALS. CONTRACTOR SHALL PROVIDE COPIES OF PERMITS AND APPROVALS TO THE CITY OF KOTZEBUE.
15. VERTICAL SEPARATION BETWEEN SEWER PIPES AND WATER PIPES SHALL NOT BE LESS THAN 18" TO EXTENT POSSIBLE, MAINTAIN 10' SEPARATION DISTANCE BETWEEN WATER SERVICE AND SEWER SERVICE PIPES.
16. CONTRACTOR SHALL RESTORE DISTURBED PROPERTY TO PRECONSTRUCTION CONDITION(S), UNLESS OTHERWISE DIRECTED BY THE ENGINEER. PAYMENT FOR RESTORING DISTURBED PROPERTY SHALL BE CONSIDERED INCIDENTAL TO THE PROJECT AND NO SEPARATE PAYMENT SHALL BE MADE.
17. TOPSOIL AND SEED ALL AREAS DISTURBED AND NOT OTHERWISE IMPROVED.
18. SURVEY CONTROL IS SHOWN ON SHEET C01.
19. CONTRACTOR IS RESPONSIBLE FOR MAINTAINING ACCESS ALONG THIRD AVENUE AND MISSION STREET FOR THE DURATION OF CONSTRUCTION. CONTRACTOR SHALL PREPARE A TRAFFIC CONTROL PLAN FOR ENGINEER REVIEW AND APPROVAL.

35% SUBMITTAL

PROJECT	1508-50231-10
DATE	5/29/2024
SHEET	002
OF	002

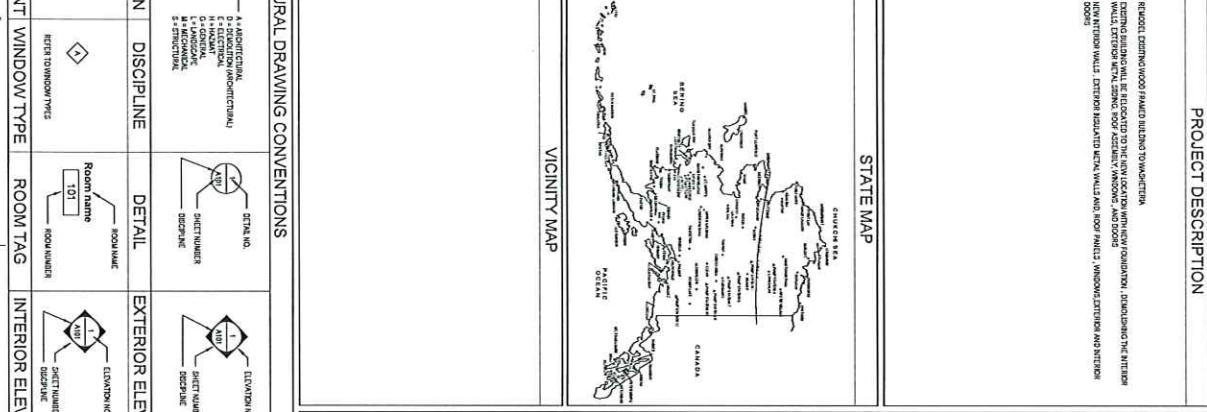
KOTZEBUE WASHETERIA
KOTZEBUE, ALASKA
LEGEND, ABBREVIATIONS, NOTES

LEGAL DESCRIPTION
LOCATION

5015 Business Park Blvd, Suite 4000
Anchorage, Alaska 99503
607-562-2000

REVISIONS		BY
REV	DATE	DESCRIPTION

1	2	3	4
<p>ARCHITECTURAL ABBREVIATIONS</p> <p>1. NORTH ARROW</p> <p>2. GRID LINES</p> <p>3. SHEET NOTE TAG</p> <p>4. BLDG./WALL SECTION</p> <p>5. DISCIPLINE</p> <p>6. DETAIL</p> <p>7. EXTERIOR ELEVATION</p> <p>8. PARTITION TYPE</p> <p>9. MATCHLINE</p> <p>10. EQUIPMENT TAG</p>	<p>PROJECT DESCRIPTION</p> <p>PROJECT: DOWEL KOTZEBUE WASHETERIA BUILDING TO WASHETERIA</p> <p>OWNER: STATE OF ALASKA, DEPARTMENT OF PUBLIC SAFETY, DIVISION OF FIRE MANAGEMENT</p> <p>LOCATION: 300 W. 5th Avenue, Suite 403 Anchorage, AK 99501</p> <p>DATE: 05/27/2024</p>	<p>DRAWING INDEX</p> <p>GENERAL</p> <p>001 GENERAL ABBREVIATIONS</p> <p>002 GENERAL NOTES</p> <p>003 LOCATION MAP AND SHEET INDEX</p> <p>004 SITE PLAN</p> <p>005 WASHETERIA DETAILS</p> <p>006 WASHETERIA FLOOR PLAN</p> <p>007 EXTERIOR ELEVATIONS</p> <p>008 EXTERIOR ELEVATIONS</p> <p>009 EXTERIOR ELEVATIONS</p> <p>010 EXTERIOR ELEVATIONS</p> <p>011 EXTERIOR ELEVATIONS</p> <p>012 EXTERIOR ELEVATIONS</p> <p>013 EXTERIOR ELEVATIONS</p> <p>014 EXTERIOR ELEVATIONS</p> <p>015 EXTERIOR ELEVATIONS</p> <p>016 EXTERIOR ELEVATIONS</p> <p>017 EXTERIOR ELEVATIONS</p> <p>018 EXTERIOR ELEVATIONS</p> <p>019 EXTERIOR ELEVATIONS</p> <p>020 EXTERIOR ELEVATIONS</p> <p>021 EXTERIOR ELEVATIONS</p> <p>022 EXTERIOR ELEVATIONS</p> <p>023 EXTERIOR ELEVATIONS</p> <p>024 EXTERIOR ELEVATIONS</p> <p>025 EXTERIOR ELEVATIONS</p> <p>026 EXTERIOR ELEVATIONS</p> <p>027 EXTERIOR ELEVATIONS</p> <p>028 EXTERIOR ELEVATIONS</p> <p>029 EXTERIOR ELEVATIONS</p> <p>030 EXTERIOR ELEVATIONS</p> <p>031 EXTERIOR ELEVATIONS</p> <p>032 EXTERIOR ELEVATIONS</p> <p>033 EXTERIOR ELEVATIONS</p> <p>034 EXTERIOR ELEVATIONS</p> <p>035 EXTERIOR ELEVATIONS</p> <p>036 EXTERIOR ELEVATIONS</p> <p>037 EXTERIOR ELEVATIONS</p> <p>038 EXTERIOR ELEVATIONS</p> <p>039 EXTERIOR ELEVATIONS</p> <p>040 EXTERIOR ELEVATIONS</p> <p>041 EXTERIOR ELEVATIONS</p> <p>042 EXTERIOR ELEVATIONS</p> <p>043 EXTERIOR ELEVATIONS</p> <p>044 EXTERIOR ELEVATIONS</p> <p>045 EXTERIOR ELEVATIONS</p> <p>046 EXTERIOR ELEVATIONS</p> <p>047 EXTERIOR ELEVATIONS</p> <p>048 EXTERIOR ELEVATIONS</p> <p>049 EXTERIOR ELEVATIONS</p> <p>050 EXTERIOR ELEVATIONS</p>	<p>ARCHITECTURAL ABBREVIATIONS</p> <p>1. NORTH ARROW</p> <p>2. GRID LINES</p> <p>3. SHEET NOTE TAG</p> <p>4. BLDG./WALL SECTION</p> <p>5. DISCIPLINE</p> <p>6. DETAIL</p> <p>7. EXTERIOR ELEVATION</p> <p>8. PARTITION TYPE</p> <p>9. MATCHLINE</p> <p>10. EQUIPMENT TAG</p>



1	2	3	4
<p>ARCHITECTURAL ABBREVIATIONS</p> <p>1. NORTH ARROW</p> <p>2. GRID LINES</p> <p>3. SHEET NOTE TAG</p> <p>4. BLDG./WALL SECTION</p> <p>5. DISCIPLINE</p> <p>6. DETAIL</p> <p>7. EXTERIOR ELEVATION</p> <p>8. PARTITION TYPE</p> <p>9. MATCHLINE</p> <p>10. EQUIPMENT TAG</p>	<p>PROJECT DESCRIPTION</p> <p>PROJECT: DOWEL KOTZEBUE WASHETERIA BUILDING TO WASHETERIA</p> <p>OWNER: STATE OF ALASKA, DEPARTMENT OF PUBLIC SAFETY, DIVISION OF FIRE MANAGEMENT</p> <p>LOCATION: 300 W. 5th Avenue, Suite 403 Anchorage, AK 99501</p> <p>DATE: 05/27/2024</p>	<p>DRAWING INDEX</p> <p>GENERAL</p> <p>001 GENERAL ABBREVIATIONS</p> <p>002 GENERAL NOTES</p> <p>003 LOCATION MAP AND SHEET INDEX</p> <p>004 SITE PLAN</p> <p>005 WASHETERIA DETAILS</p> <p>006 WASHETERIA FLOOR PLAN</p> <p>007 EXTERIOR ELEVATIONS</p> <p>008 EXTERIOR ELEVATIONS</p> <p>009 EXTERIOR ELEVATIONS</p> <p>010 EXTERIOR ELEVATIONS</p> <p>011 EXTERIOR ELEVATIONS</p> <p>012 EXTERIOR ELEVATIONS</p> <p>013 EXTERIOR ELEVATIONS</p> <p>014 EXTERIOR ELEVATIONS</p> <p>015 EXTERIOR ELEVATIONS</p> <p>016 EXTERIOR ELEVATIONS</p> <p>017 EXTERIOR ELEVATIONS</p> <p>018 EXTERIOR ELEVATIONS</p> <p>019 EXTERIOR ELEVATIONS</p> <p>020 EXTERIOR ELEVATIONS</p> <p>021 EXTERIOR ELEVATIONS</p> <p>022 EXTERIOR ELEVATIONS</p> <p>023 EXTERIOR ELEVATIONS</p> <p>024 EXTERIOR ELEVATIONS</p> <p>025 EXTERIOR ELEVATIONS</p> <p>026 EXTERIOR ELEVATIONS</p> <p>027 EXTERIOR ELEVATIONS</p> <p>028 EXTERIOR ELEVATIONS</p> <p>029 EXTERIOR ELEVATIONS</p> <p>030 EXTERIOR ELEVATIONS</p> <p>031 EXTERIOR ELEVATIONS</p> <p>032 EXTERIOR ELEVATIONS</p> <p>033 EXTERIOR ELEVATIONS</p> <p>034 EXTERIOR ELEVATIONS</p> <p>035 EXTERIOR ELEVATIONS</p> <p>036 EXTERIOR ELEVATIONS</p> <p>037 EXTERIOR ELEVATIONS</p> <p>038 EXTERIOR ELEVATIONS</p> <p>039 EXTERIOR ELEVATIONS</p> <p>040 EXTERIOR ELEVATIONS</p> <p>041 EXTERIOR ELEVATIONS</p> <p>042 EXTERIOR ELEVATIONS</p> <p>043 EXTERIOR ELEVATIONS</p> <p>044 EXTERIOR ELEVATIONS</p> <p>045 EXTERIOR ELEVATIONS</p> <p>046 EXTERIOR ELEVATIONS</p> <p>047 EXTERIOR ELEVATIONS</p> <p>048 EXTERIOR ELEVATIONS</p> <p>049 EXTERIOR ELEVATIONS</p> <p>050 EXTERIOR ELEVATIONS</p>	<p>ARCHITECTURAL ABBREVIATIONS</p> <p>1. NORTH ARROW</p> <p>2. GRID LINES</p> <p>3. SHEET NOTE TAG</p> <p>4. BLDG./WALL SECTION</p> <p>5. DISCIPLINE</p> <p>6. DETAIL</p> <p>7. EXTERIOR ELEVATION</p> <p>8. PARTITION TYPE</p> <p>9. MATCHLINE</p> <p>10. EQUIPMENT TAG</p>

1	2	3	4
<p>ARCHITECTURAL ABBREVIATIONS</p> <p>1. NORTH ARROW</p> <p>2. GRID LINES</p> <p>3. SHEET NOTE TAG</p> <p>4. BLDG./WALL SECTION</p> <p>5. DISCIPLINE</p> <p>6. DETAIL</p> <p>7. EXTERIOR ELEVATION</p> <p>8. PARTITION TYPE</p> <p>9. MATCHLINE</p> <p>10. EQUIPMENT TAG</p>	<p>PROJECT DESCRIPTION</p> <p>PROJECT: DOWEL KOTZEBUE WASHETERIA BUILDING TO WASHETERIA</p> <p>OWNER: STATE OF ALASKA, DEPARTMENT OF PUBLIC SAFETY, DIVISION OF FIRE MANAGEMENT</p> <p>LOCATION: 300 W. 5th Avenue, Suite 403 Anchorage, AK 99501</p> <p>DATE: 05/27/2024</p>	<p>DRAWING INDEX</p> <p>GENERAL</p> <p>001 GENERAL ABBREVIATIONS</p> <p>002 GENERAL NOTES</p> <p>003 LOCATION MAP AND SHEET INDEX</p> <p>004 SITE PLAN</p> <p>005 WASHETERIA DETAILS</p> <p>006 WASHETERIA FLOOR PLAN</p> <p>007 EXTERIOR ELEVATIONS</p> <p>008 EXTERIOR ELEVATIONS</p> <p>009 EXTERIOR ELEVATIONS</p> <p>010 EXTERIOR ELEVATIONS</p> <p>011 EXTERIOR ELEVATIONS</p> <p>012 EXTERIOR ELEVATIONS</p> <p>013 EXTERIOR ELEVATIONS</p> <p>014 EXTERIOR ELEVATIONS</p> <p>015 EXTERIOR ELEVATIONS</p> <p>016 EXTERIOR ELEVATIONS</p> <p>017 EXTERIOR ELEVATIONS</p> <p>018 EXTERIOR ELEVATIONS</p> <p>019 EXTERIOR ELEVATIONS</p> <p>020 EXTERIOR ELEVATIONS</p> <p>021 EXTERIOR ELEVATIONS</p> <p>022 EXTERIOR ELEVATIONS</p> <p>023 EXTERIOR ELEVATIONS</p> <p>024 EXTERIOR ELEVATIONS</p> <p>025 EXTERIOR ELEVATIONS</p> <p>026 EXTERIOR ELEVATIONS</p> <p>027 EXTERIOR ELEVATIONS</p> <p>028 EXTERIOR ELEVATIONS</p> <p>029 EXTERIOR ELEVATIONS</p> <p>030 EXTERIOR ELEVATIONS</p> <p>031 EXTERIOR ELEVATIONS</p> <p>032 EXTERIOR ELEVATIONS</p> <p>033 EXTERIOR ELEVATIONS</p> <p>034 EXTERIOR ELEVATIONS</p> <p>035 EXTERIOR ELEVATIONS</p> <p>036 EXTERIOR ELEVATIONS</p> <p>037 EXTERIOR ELEVATIONS</p> <p>038 EXTERIOR ELEVATIONS</p> <p>039 EXTERIOR ELEVATIONS</p> <p>040 EXTERIOR ELEVATIONS</p> <p>041 EXTERIOR ELEVATIONS</p> <p>042 EXTERIOR ELEVATIONS</p> <p>043 EXTERIOR ELEVATIONS</p> <p>044 EXTERIOR ELEVATIONS</p> <p>045 EXTERIOR ELEVATIONS</p> <p>046 EXTERIOR ELEVATIONS</p> <p>047 EXTERIOR ELEVATIONS</p> <p>048 EXTERIOR ELEVATIONS</p> <p>049 EXTERIOR ELEVATIONS</p> <p>050 EXTERIOR ELEVATIONS</p>	<p>ARCHITECTURAL ABBREVIATIONS</p> <p>1. NORTH ARROW</p> <p>2. GRID LINES</p> <p>3. SHEET NOTE TAG</p> <p>4. BLDG./WALL SECTION</p> <p>5. DISCIPLINE</p> <p>6. DETAIL</p> <p>7. EXTERIOR ELEVATION</p> <p>8. PARTITION TYPE</p> <p>9. MATCHLINE</p> <p>10. EQUIPMENT TAG</p>

CLIENT
DOWL KOTZEBUE
WASHETERIA
 STREET ADDRESS

35% SCHEMATIC DESIGN

ARCHITECTS
ALASKA

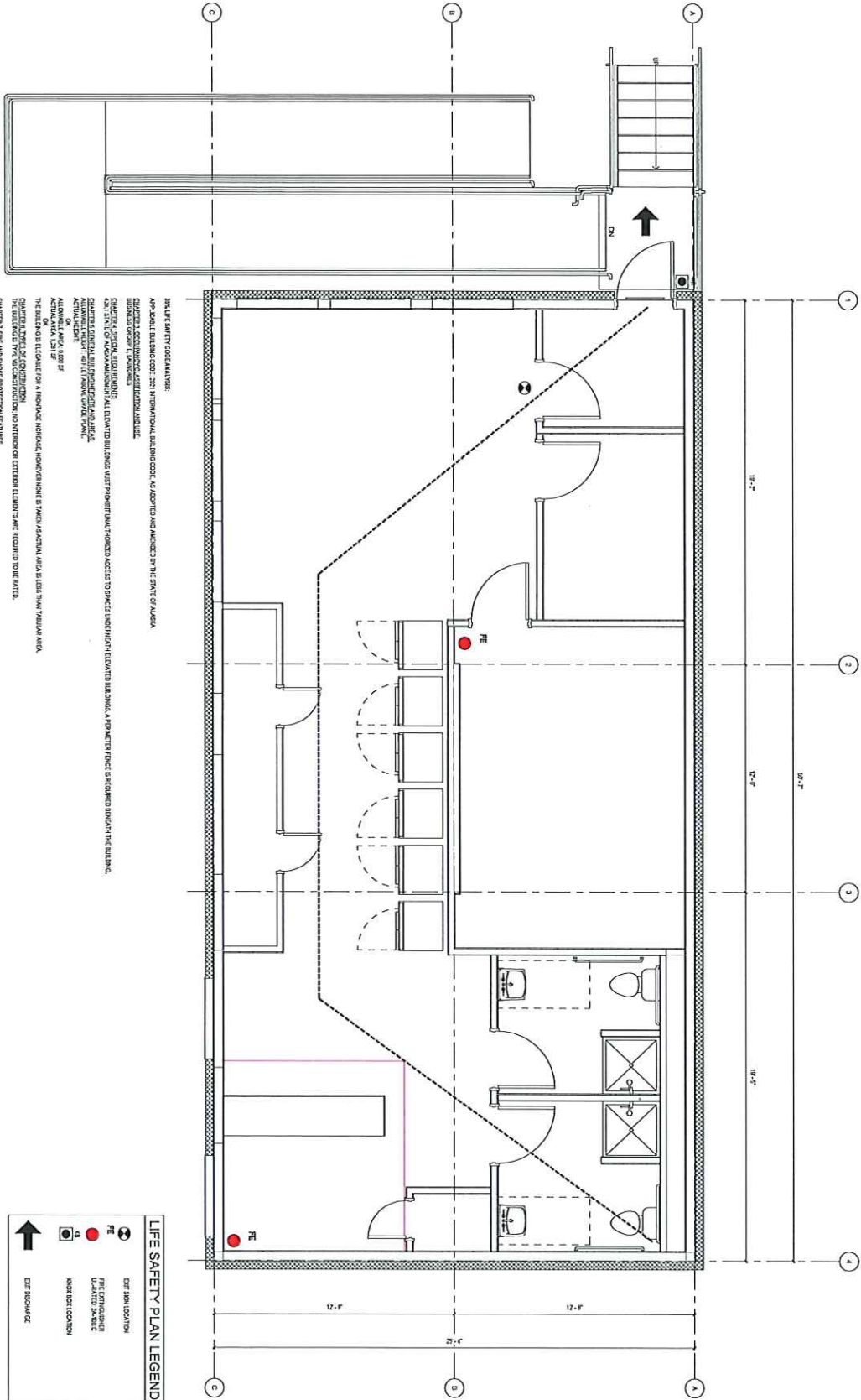
300 W. 5th Avenue, Suite 403
 Anchorage, AK 99501
 907.562.1234
 www.architecturalalaska.com

Revisions	No.	Description	Date

Sheet No. **G010**
 GENERAL NOTES, ABBREVIATIONS, LOCATION MAP AND SHEET INDEX

LIFE SAFETY

3/8" = 1'-0"



201. LIFE SAFETY CODE ANALYSIS:
 APPLICABLE BUILDING CODE: 201 INTERNATIONAL BUILDING CODE, AS ADOPTED AND AMENDED BY THE STATE OF ALASKA
 BUILDING OCCUPANCY CLASSIFICATION: RESIDENTIAL
 BUILDING HEIGHT: 3 STOREYS
 ELEVATOR TYPE: NONE
 ALL ELEVATED BUILDING PARTS PROVIDE UNHINDERED ACCESS TO SPECIAL UNDERGROUND ELEVATED BUILDING. A SIGNATURE FENCE IS REQUIRED AROUND THE BUILDING.
 ALL ELEVATED BUILDING PARTS SHALL BE PROTECTED BY AN AUTOMATIC FIRE SUPPRESSION SYSTEM.
 ALL ELEVATED BUILDING PARTS SHALL BE PROTECTED BY AN AUTOMATIC FIRE SUPPRESSION SYSTEM.
 ALL ELEVATED BUILDING PARTS SHALL BE PROTECTED BY AN AUTOMATIC FIRE SUPPRESSION SYSTEM.
 ALL ELEVATED BUILDING PARTS SHALL BE PROTECTED BY AN AUTOMATIC FIRE SUPPRESSION SYSTEM.
 ALL ELEVATED BUILDING PARTS SHALL BE PROTECTED BY AN AUTOMATIC FIRE SUPPRESSION SYSTEM.

LIFE SAFETY PLAN LEGEND

[Symbol: Circle with 'FE']	EXTINGUISHER LOCATION
[Symbol: Red circle]	FIRE FIGHTING EQUIPMENT LOCATION
[Symbol: Blue circle]	LIFE SAFETY SIGN
[Symbol: Red circle]	INDICATED LOCATION
[Symbol: Arrow]	EXIT INDICATOR

CLIENT
**DOWL KOTZEBUE
 WASHETERIA**
 STREET ADDRESS

35%
 SCHEMATIC
 DESIGN

Sheet No. **LS101**

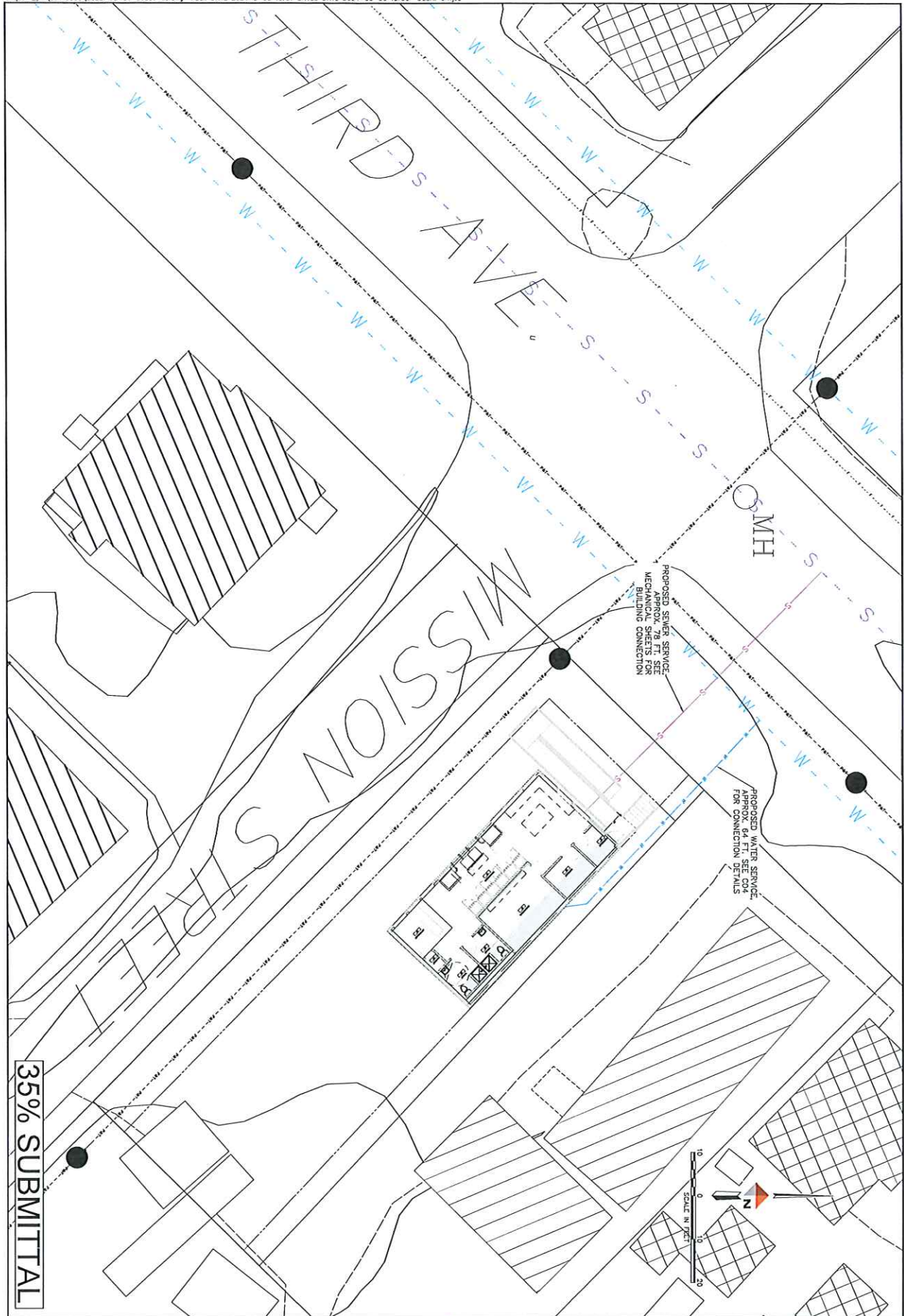
Revisions	No.	Description	Date

Owner	Date
Client	Date
Designer	Date
Checker	Date

Sheet Contents
 LIFE SAFETY PLANS

**ARCHITECTS
 ALASKA**

3500 W. 5TH AVENUE, SUITE 403
 ANCHORAGE, AK 99503
 907.272.8277
 191 E. DEWEEN AVENUE, SUITE 403
 WILSON, AK 99586
 907.272.5003
www.architecturalaska.com



35% SUBMITTAL

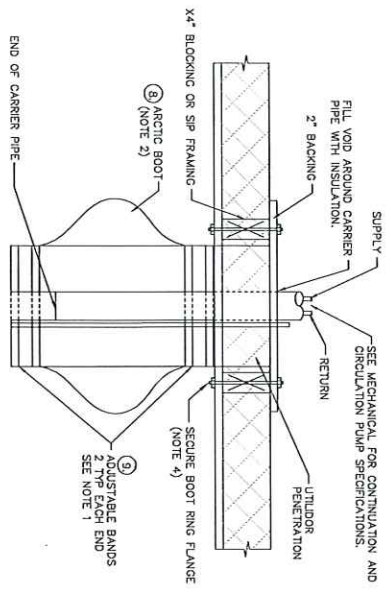
PROJECT	1548-50231-10
DATE	5/29/2024
SHEET	C02
OF	2

KOTZEBUE WASHETERIA
KOTZEBUE, ALASKA
SITE LAYOUT

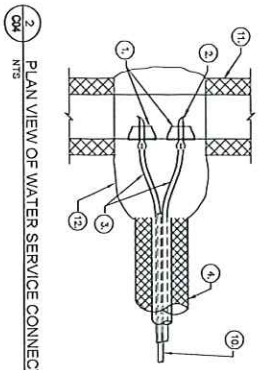
LEGAL DESCRIPTION
LOCATION

DOWL
AECLE48 WWW.DOWL.COM
5015 Business Park Blvd, Suite 4000
Anchorage, Alaska 99503
607-562-2000

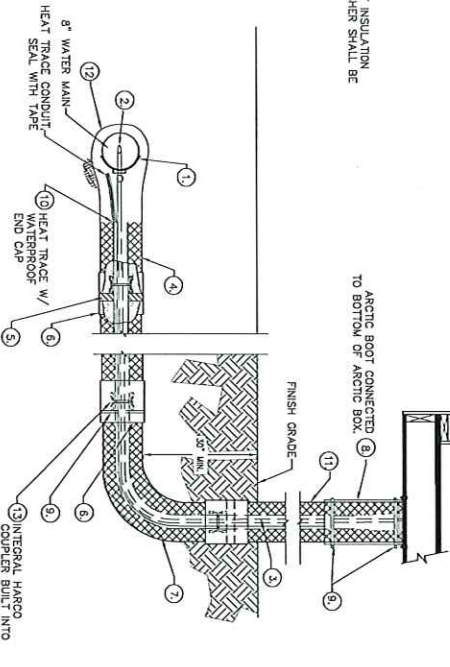
REVISIONS		DESCRIPTION	BY
REV	DATE		



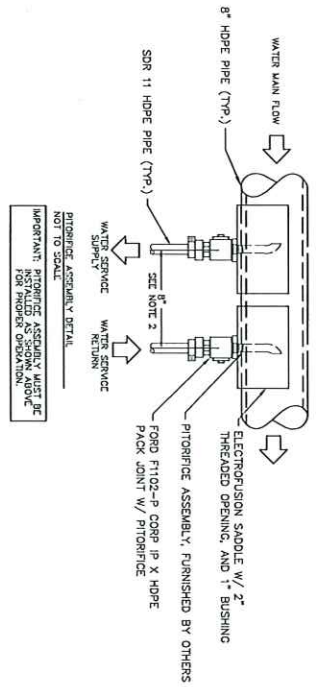
- NOTES:
 1. ADJUSTABLE BANDS SHALL BE 1 INCH WIDE STAINLESS STEEL.
 2. INSTALL BOOT W/ 6 INCHES SLACK LENGTH FOR MOVEMENT. FILL W/ BATT INSULATION.
 3. INSULATION WASHERS NOMINAL 4 BY 12 FLEXIBLE CLOSED CELL FOAM WASHER SHALL BE ASTM D-1056-95 241 BLACK EP/PE/BUTL BLEND.
 4. SEAL ALL PENETRATIONS W/ INSULATION.



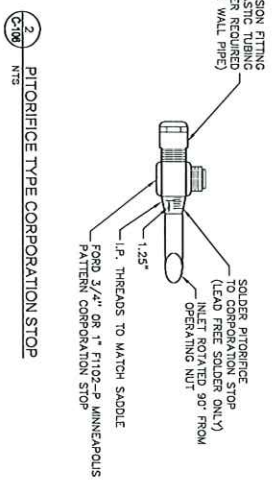
1. FUSION SERVICE SADDLE (2) SERVICE, THREADED PER PITORIFICE ASSEMBLY.
 2. PITORIFICE ASSEMBLY.
 3. HOPE SERVICE LINE (2\"/>



8. ARCTIC BOOT
 9. ADJUSTABLE BANDS
 10. HEAT TRACE
 11. HOPE INSULATED ARCTIC PIPE
 12. INSULATED SERVICE JOINT KIT
 13. HARCO COUPLING



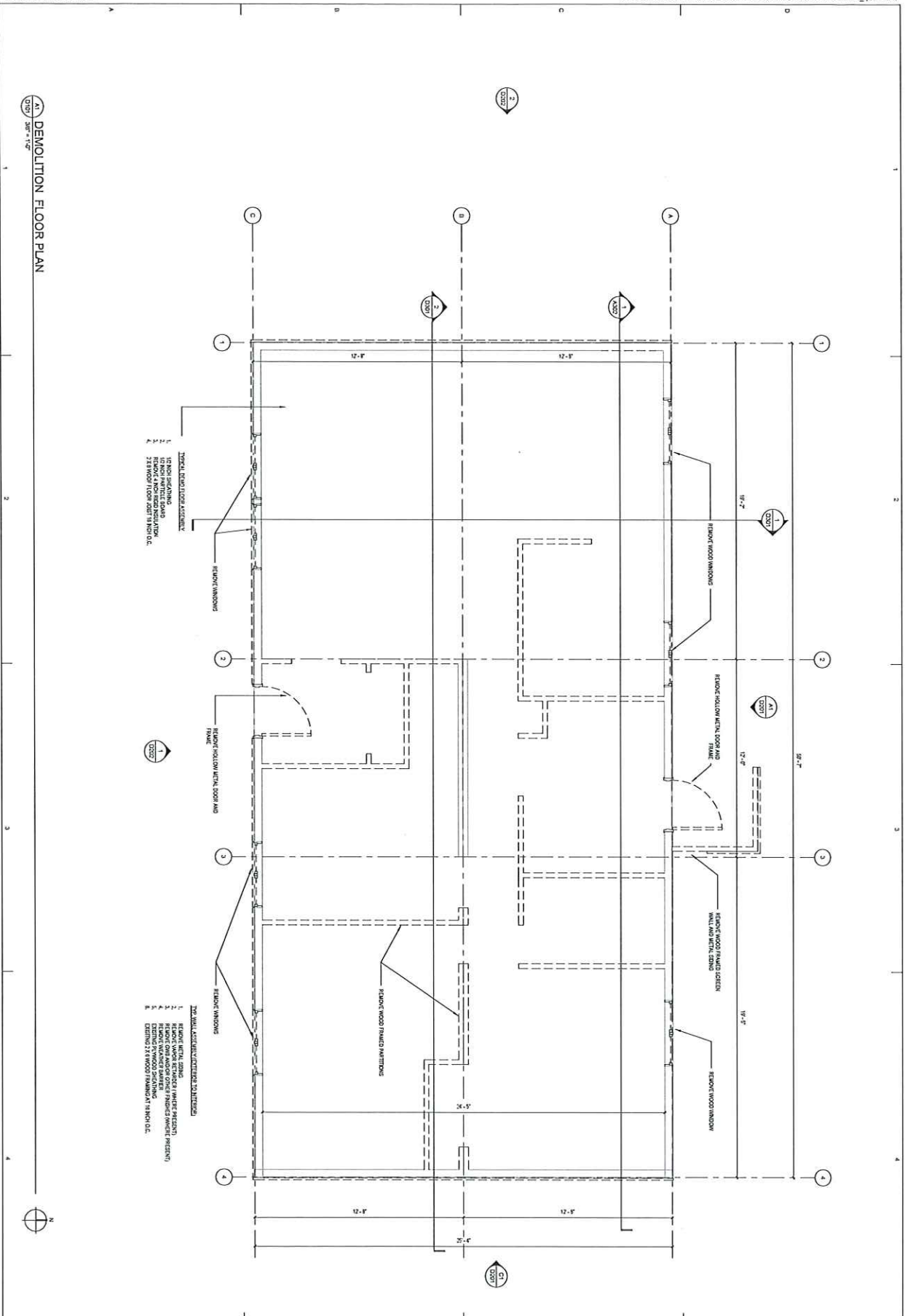
PITORIFICE ASSEMBLY MUST BE THREADED OPENING, AND 1\"/>



- WATER SERVICE CONNECTION NOTES:
 1. CONTRACTOR SHALL ENSURE PITORIFICE ASSEMBLY IS INSTALLED AT THE SPECIFIED SEPARATION DISTANCE (8 INCHES CENTER TO CENTER) TO ACCOMMODATE PLACEMENT OF THE PREMOULDED INSULATION SHEETS.
 2. THE INSULATION KITS SHOULD BE USED WHERE PRACTICAL, IF NOT PRACTICAL, THE CONTRACTOR SHALL WRAP THE AREA IN THREE LAYERS OF 6 MIL POLYETHYLENE AND TAPE SEAMS.
 3. CONTRACTOR SHALL NOT ALLOW FOAM TO COME IN CONTACT WITH HEAT TRACE. FOAM IN PLACE 6 INCHES OF POLYURETHANE INSULATION AND COAT WITH ELASTOMER COATING TO SEAL.

35% SUBMITTAL

A1 DEMOLITION FLOOR PLAN
Scale: 1/8" = 1'-0"



- REMOVE WINDOW**
1. REMOVE WINDOW
 2. REMOVE WINDOW
 3. REMOVE WINDOW
 4. REMOVE WINDOW

- REMOVE HOLLOW METAL DOOR AND FRAME**
1. REMOVE HOLLOW METAL DOOR AND FRAME
 2. REMOVE HOLLOW METAL DOOR AND FRAME
 3. REMOVE HOLLOW METAL DOOR AND FRAME
 4. REMOVE HOLLOW METAL DOOR AND FRAME

- REMOVE WOOD FRAMED PARTITION**
1. REMOVE WOOD FRAMED PARTITION
 2. REMOVE WOOD FRAMED PARTITION
 3. REMOVE WOOD FRAMED PARTITION
 4. REMOVE WOOD FRAMED PARTITION

- REMOVE WOOD FRAMED SCHEDULE 40 METAL STUD PARTITION**
1. REMOVE WOOD FRAMED SCHEDULE 40 METAL STUD PARTITION
 2. REMOVE WOOD FRAMED SCHEDULE 40 METAL STUD PARTITION
 3. REMOVE WOOD FRAMED SCHEDULE 40 METAL STUD PARTITION
 4. REMOVE WOOD FRAMED SCHEDULE 40 METAL STUD PARTITION

Sheet No.
D101

Sheet Contents
DEMOLITION FLOOR PLAN

Drawn by	Date
SP, SAC	02-15-24
Checked	03-11-24
Scale	1/8" = 1'-0"
Scale	1/8" = 1'-0"

Revisions	No.	Description	Date

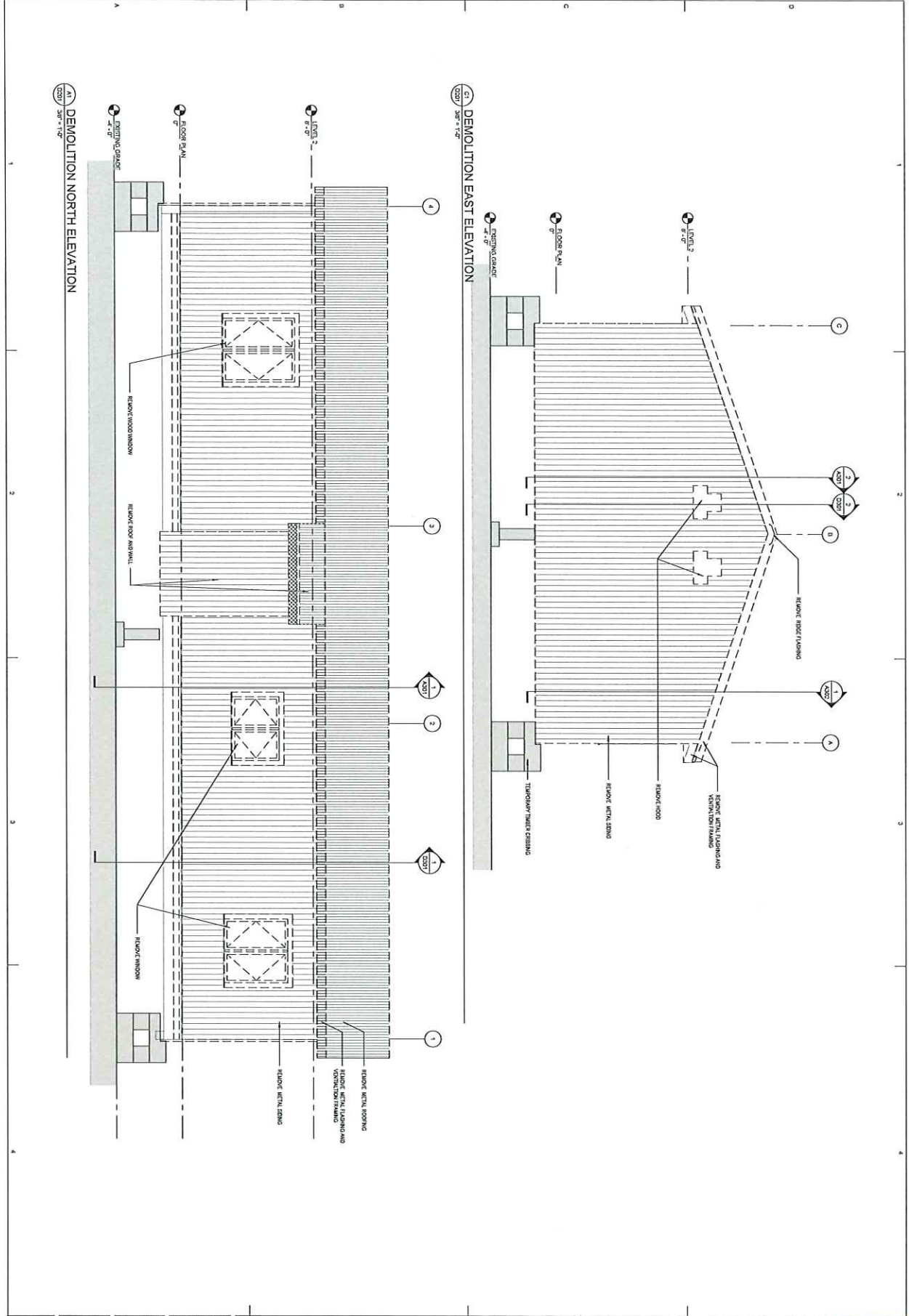
CLIENT
DOWL KOTZEBUE
WASHETERIA
STREET ADDRESS

35% SCHEMATIC DESIGN

ARCHITECTS
ALASKA

300 W. 30th Avenue, Suite 403
 Anchorage, AK, 99501
 191 E. Dimmock Avenue, Suite 403
 Wasilla, AK 99584
 907.273.7500
 www.architecturalak.com





ARCHITECTS
ALASKA

300 W. 5th Avenue, Suite 403
Anchorage, AK, 99501
191 E. Pioneer Avenue, Suite 403
Wasilla, AK 99564
907.273.7500
www.architecturalak.com

CLIENT
DOWL KOTZEBUE
WASHETERIA
STREET ADDRESS

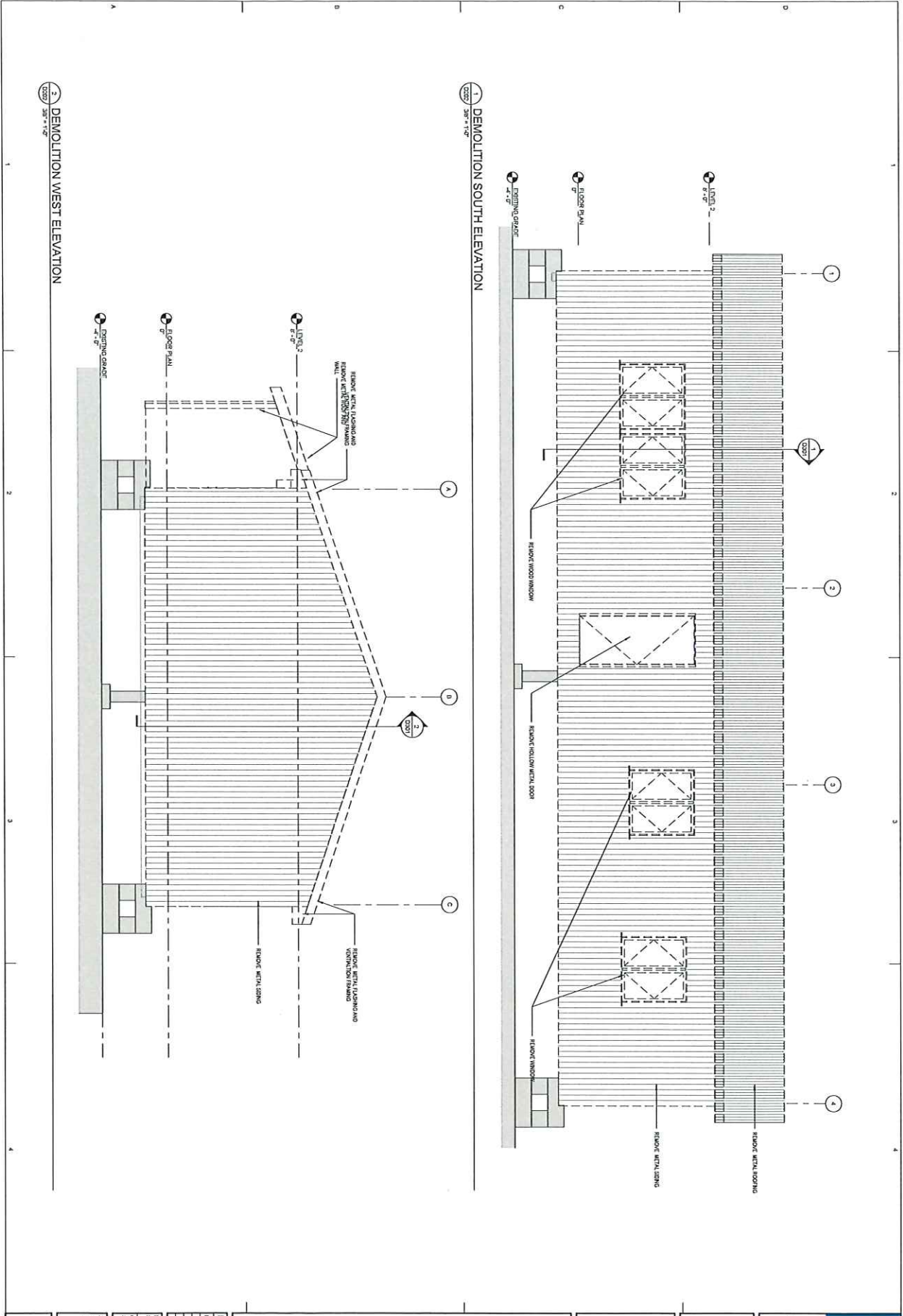
35%
SCHEMATIC
DESIGN

Sheet No.
D201

Revisions	
No.	Description

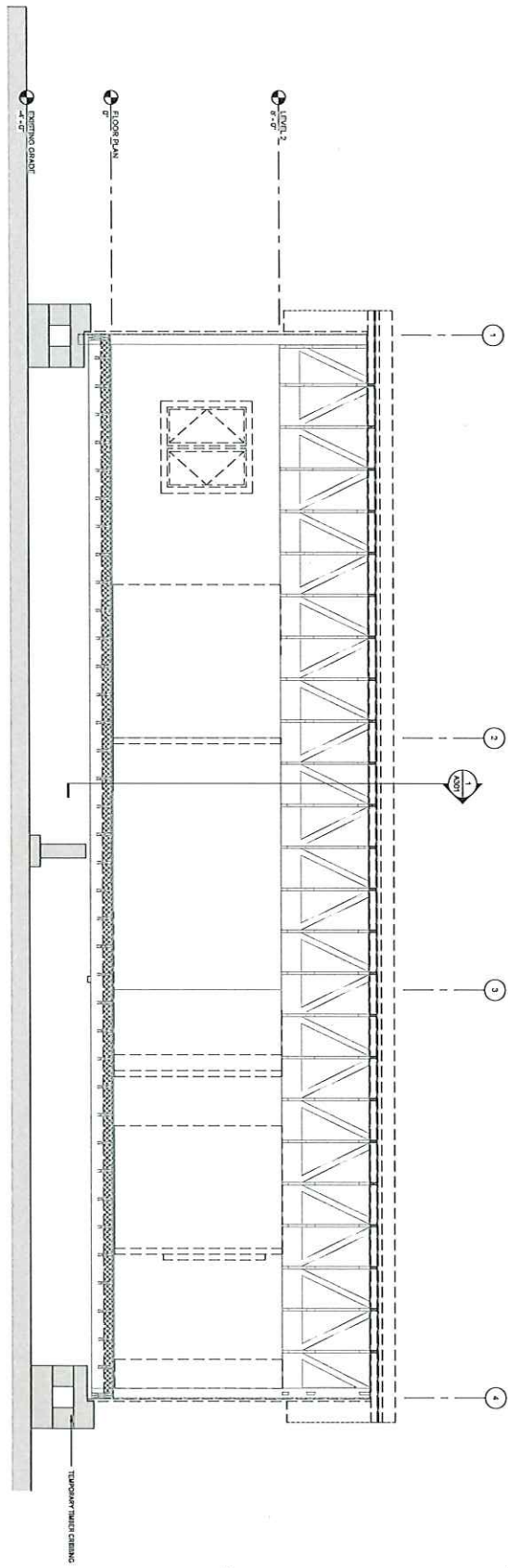
Drawn by SP, SAC	Date 03/15/24
Checked DAG, DAM	Job No. 2020201

Sheet Contents
DEMOLITION CRITERIA

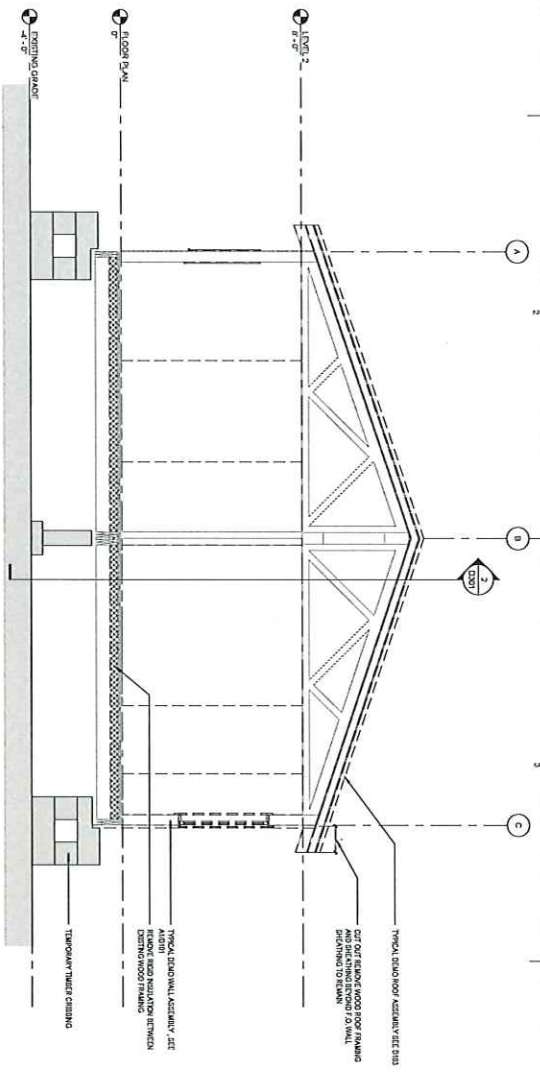


ARCHITECTS ALASKA <small>ASCCA</small>	500 W. 5th Avenue, Suite 403 Anchorage, AK, 99501 907.563.7993 191 E. Wainwright Avenue, Suite 403 Anchorage, AK, 99504 907.273.7262 www.architecturalaska.com	96% SCHEMATIC DESIGN	CLIENT DOWL KOTZEBUE WASHETERIA STREET ADDRESS	Sheet No. D202
	Revisions No. Description Date			
	Drawn by: Date PR: SDC 04/10/24 Checked: Job No. DAC: DAW 23025			
Sheet Contents: DEMOLITION SCHEMATIC				

DEMOLITION BUILDING SECTION 2



DEMOLITION BUILDING SECTION 1



Revisions		
No.	Description	Date

Drawn by	Date
SP, SAE	04/15/24
Checked	Job No.
DCL, DML	230001

Sheet Contents
DEMOLITION BUILDING SECTION 1
DEMOLITION BUILDING SECTION 2

CLIENT
**DOWL KOTZEBUE
WASHERIA**
STREET ADDRESS

35%
SCHEMATIC
DESIGN

ARCHITECTS
ALASKA

500 W. 3rd Avenue, Suite 403
Anchorage, AK, 99501
191 E. Dimension Avenue, Suite 403
Wasilla, AK, 99587
907.723.2900
www.architecturalak.com

Sheet No.
D301

FLOOR PLAN b

1/8" = 1'-0"

1/8" = 1'-0"

1/8" = 1'-0"

1/8" = 1'-0"

1/8" = 1'-0"

1/8" = 1'-0"

1/8" = 1'-0"

1/8" = 1'-0"

1/8" = 1'-0"

1/8" = 1'-0"

1/8" = 1'-0"

1/8" = 1'-0"

1/8" = 1'-0"

1/8" = 1'-0"

1/8" = 1'-0"

1/8" = 1'-0"

1/8" = 1'-0"

1/8" = 1'-0"

1/8" = 1'-0"

1/8" = 1'-0"

1/8" = 1'-0"

1/8" = 1'-0"

1/8" = 1'-0"

1/8" = 1'-0"

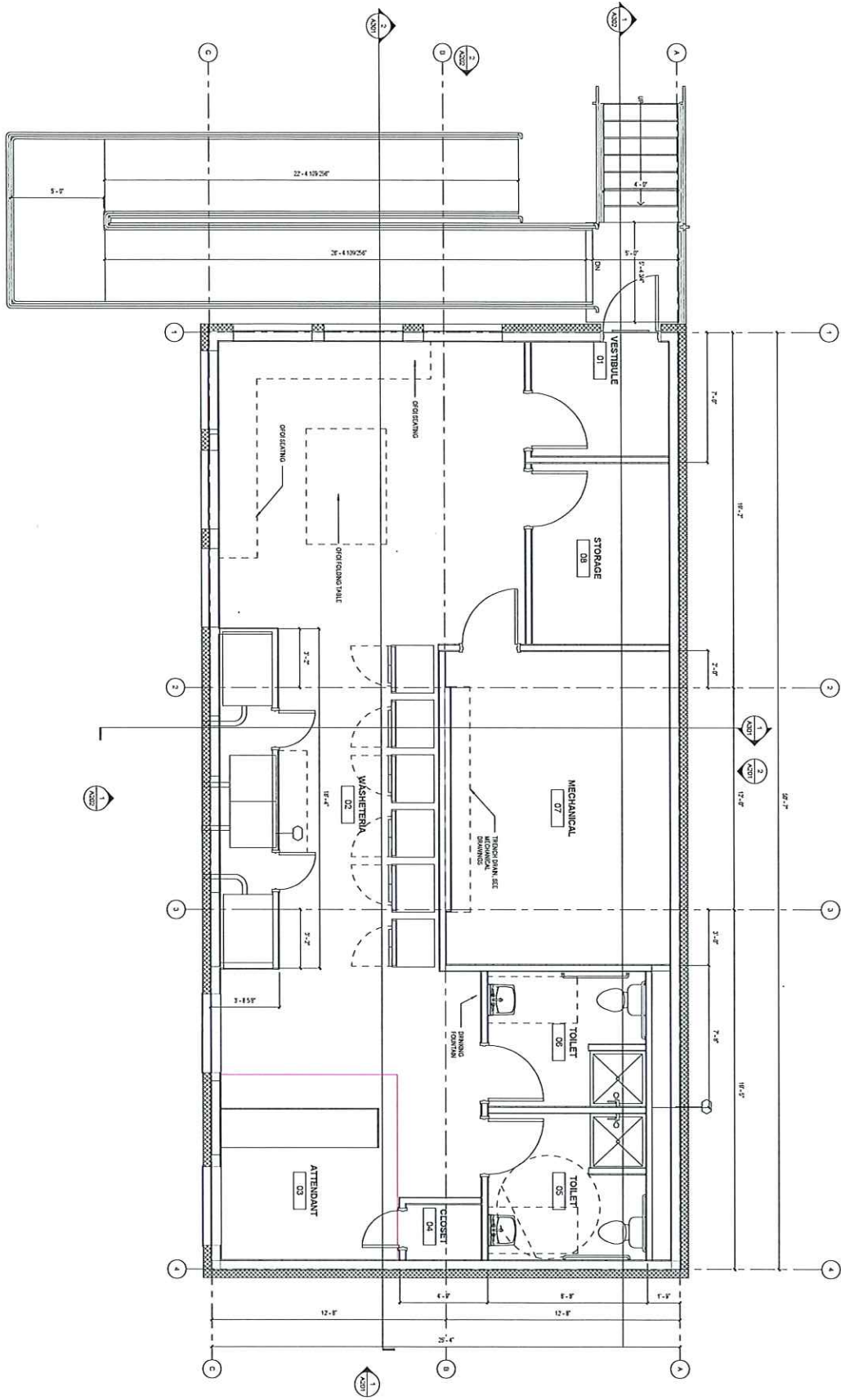
1/8" = 1'-0"

1/8" = 1'-0"

1/8" = 1'-0"

1/8" = 1'-0"

1/8" = 1'-0"



Sheet No.
A101

Client
**DOWL KOTZEBUE
WASHETERIA
STREET ADDRESS**

30%
**SCHEMATIC
DESIGN**

Revisions	No.	Description	Date

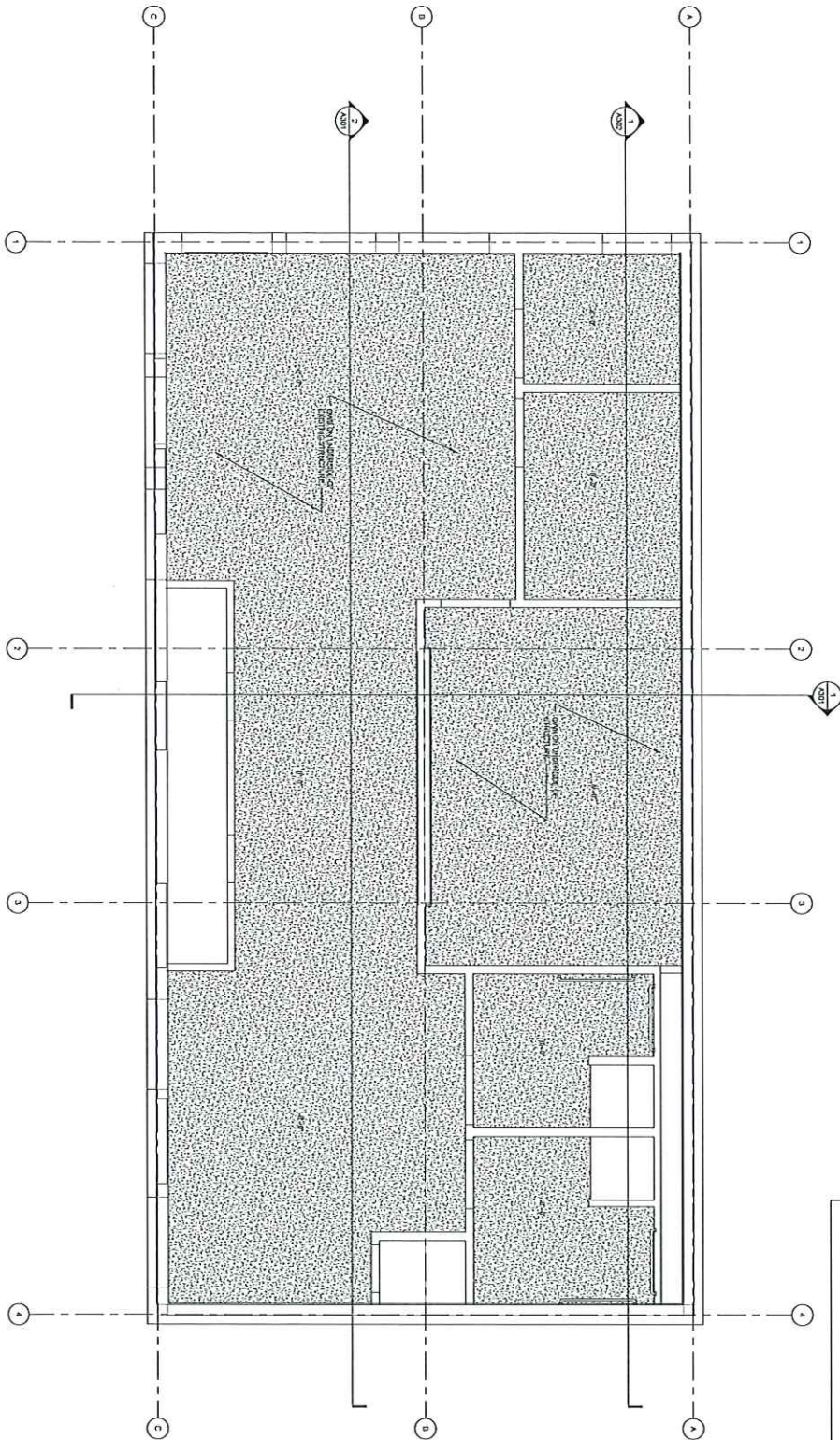
Drawn by	Date
SP, SLD	03/15/24
Checked	JAN, NK
Scale	AS SHOWN

Sheet Contents
FLOOR PLAN

300 W. 2nd Avenue, Suite 400
Anchorage, AK 99501
191 E. Dimmock Avenue, Suite 400
Wasilla, AK 99684
907.274.2500
www.architecturalalaska.com

**ARCHITECTS
ALASKA**

FLOOR PLAN
1/25/24



REFLECTED CEILING PLAN LEGEND

OPTIMAL BOARD CEILING

Sheet No.
A102

Sheet Comments
KOTZEBUE WASHETERIA

Drawn by	Date
SP, SLD	05/15/24
Checked	Job No.
PAK, DLM	230261

REVISIONS	
No.	Description

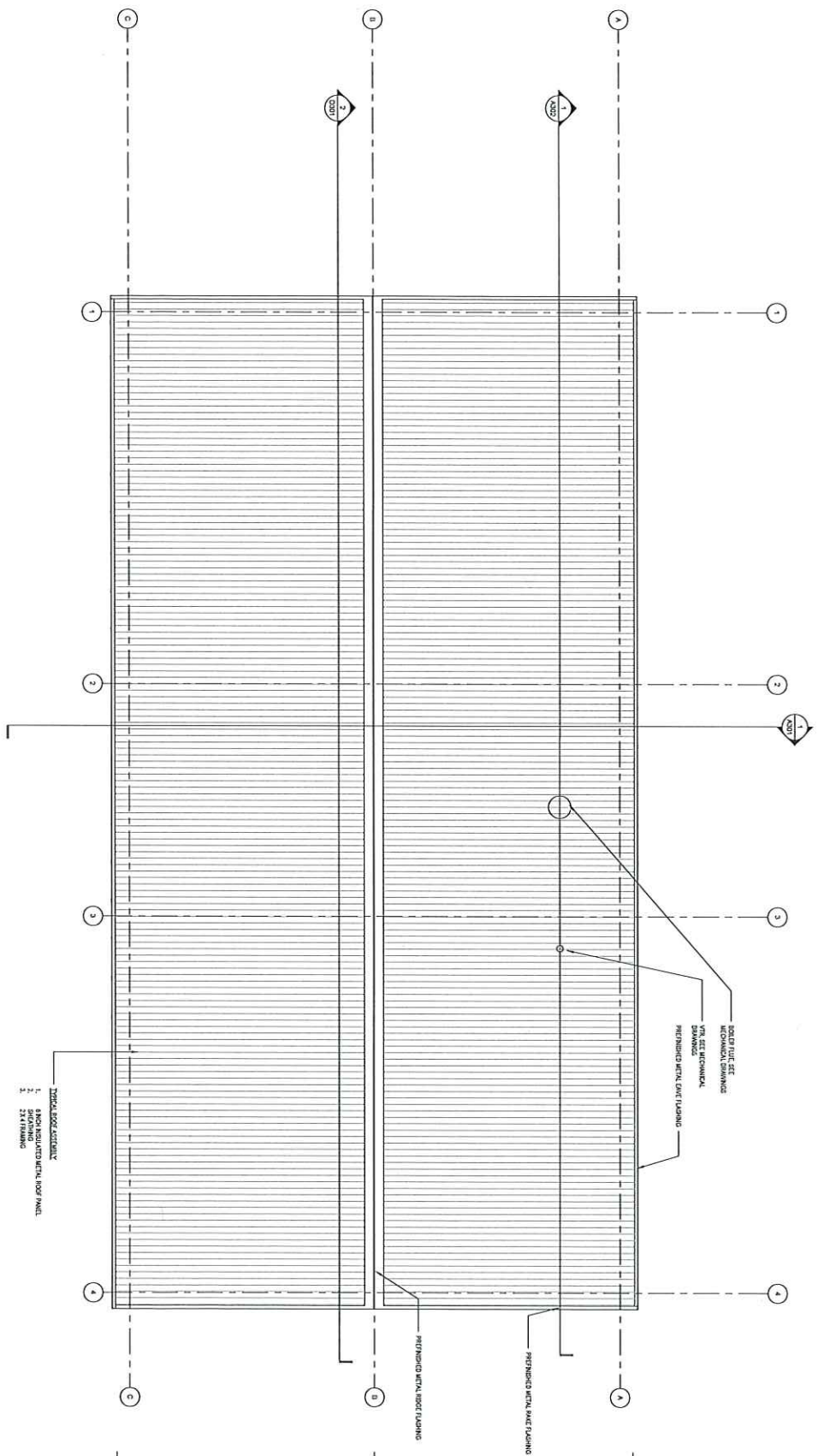
CLIENT
**DOWL KOTZEBUE
WASHETERIA**
STREET ADDRESS

35%
**SCHEMATIC
DESIGN**

ARCHITECTS
ALASKA

300 W. 5th Avenue, Suite 403
Anchorage, Alaska 99501
907.271.2527
191 E. Dimmock Avenue, Suite 403
Wasilla, AK 99584
www.architecturalak.com

1 ROOF PLAN
A103 SHEET "1" OF "1"



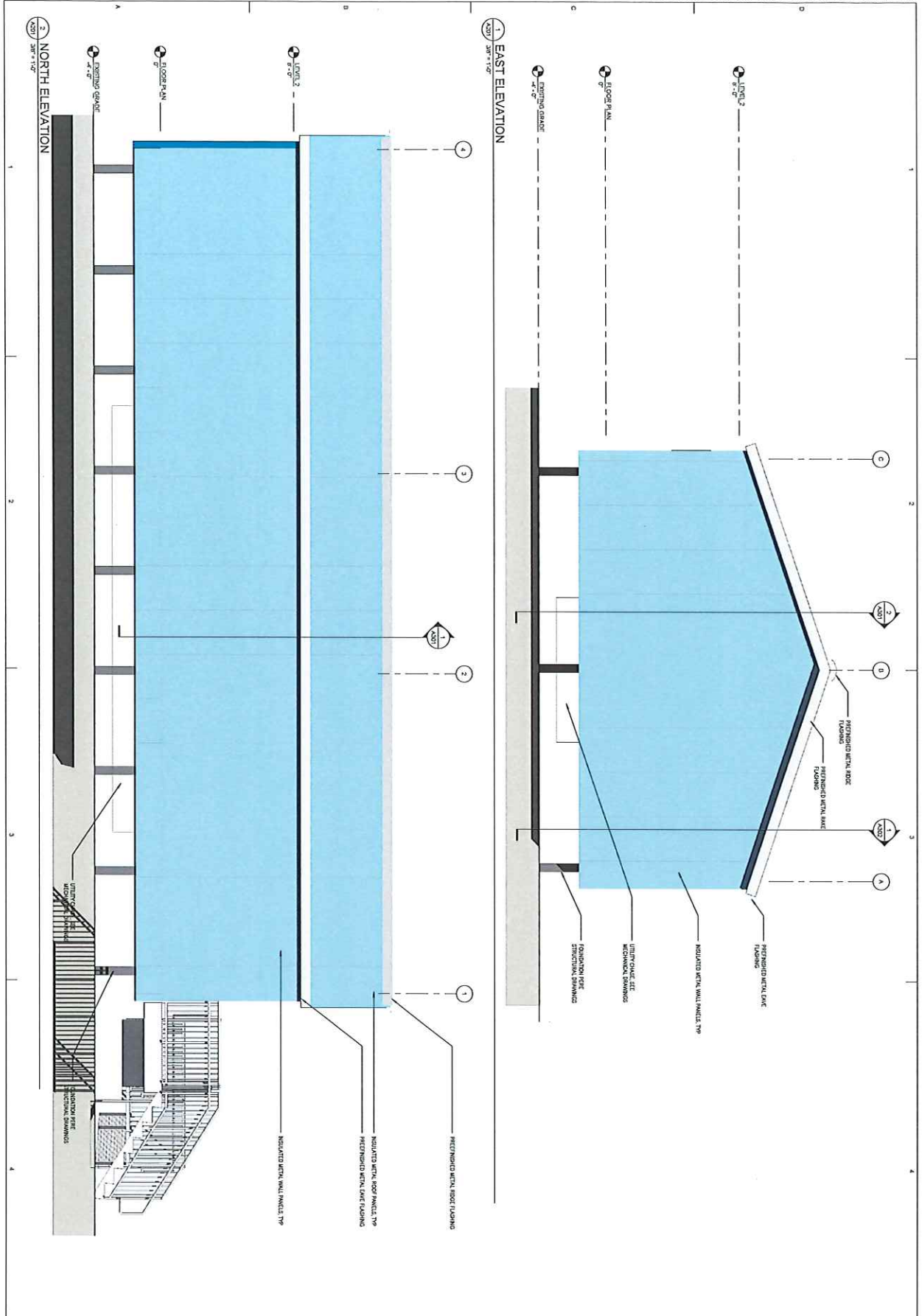
- TYPICAL ROOF DETAIL
1. 8"X8" INSULATED METAL ROOF PANEL
 2. SEALING
 3. 2" X 1/8" FLASHING

PROPOSED METAL ROOF FLASHING
 PROPOSED METAL ROOF FLASHING
 PROPOSED METAL ROOF FLASHING

PROPOSED METAL ROOF FLASHING

PROPOSED METAL ROOF FLASHING

 ARCHITECTS ALASKA	900 W. 5th Avenue, Suite 402 Anchorage, AK, 99501 907.222.2267 191 E. Sandberg Avenue, Suite 400 Anchorage, AK, 99501 907.272.7503 www.architecturalalaska.com	CLIENT DOWL KOTZEBUE WASHETERIA STREET ADDRESS	35% SCHEMATIC DESIGN																					
<table border="1" style="width: 100%; border-collapse: collapse;"> <thead> <tr> <th colspan="4">Revisions</th> </tr> <tr> <th>No.</th> <th>Description</th> <th>Date</th> <th></th> </tr> </thead> <tbody> <tr> <td> </td> <td> </td> <td> </td> <td> </td> </tr> <tr> <td> </td> <td> </td> <td> </td> <td> </td> </tr> </tbody> </table>					Revisions				No.	Description	Date													
Revisions																								
No.	Description	Date																						
<table border="1" style="width: 100%; border-collapse: collapse;"> <tr> <td style="width: 20%;">Project No.</td> <td style="width: 20%;">915-041</td> <td style="width: 20%;">Date</td> <td style="width: 20%;">05/15/24</td> <td style="width: 20%;"> </td> </tr> <tr> <td>Drawn By</td> <td>PAK, QJM</td> <td>Check By</td> <td>2/20/23</td> <td> </td> </tr> <tr> <td colspan="5">Sheet Contents</td> </tr> <tr> <td colspan="5">ROOF PLAN</td> </tr> </table>					Project No.	915-041	Date	05/15/24		Drawn By	PAK, QJM	Check By	2/20/23		Sheet Contents					ROOF PLAN				
Project No.	915-041	Date	05/15/24																					
Drawn By	PAK, QJM	Check By	2/20/23																					
Sheet Contents																								
ROOF PLAN																								
A103																								



**ARCHITECTS
ALASKA**

1901 W. 8th Avenue, Suite 403
Anchorage, AK 99501
907.272.8287
1917 E. Dimmock Avenue, Suite 403
Anchorage, AK 99515
907.272.1503
www.architectsalaska.com

CLIENT
DOWL KOTZEBUE
WASHETERIA
STREET ADDRESS

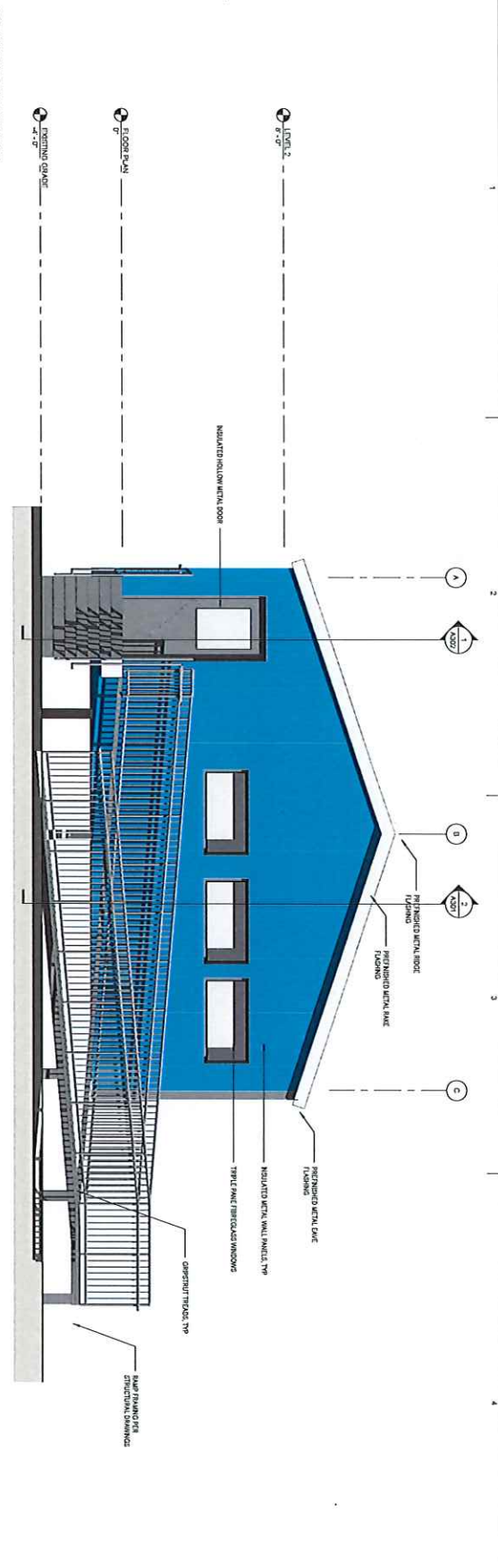
35%
SCHEMATIC
DESIGN

Revisions		No.	Description	Date
Drawn by	SP, BAE			
Checked	DR, CHL			
Scale	ASCE			
Date	06/05/24			

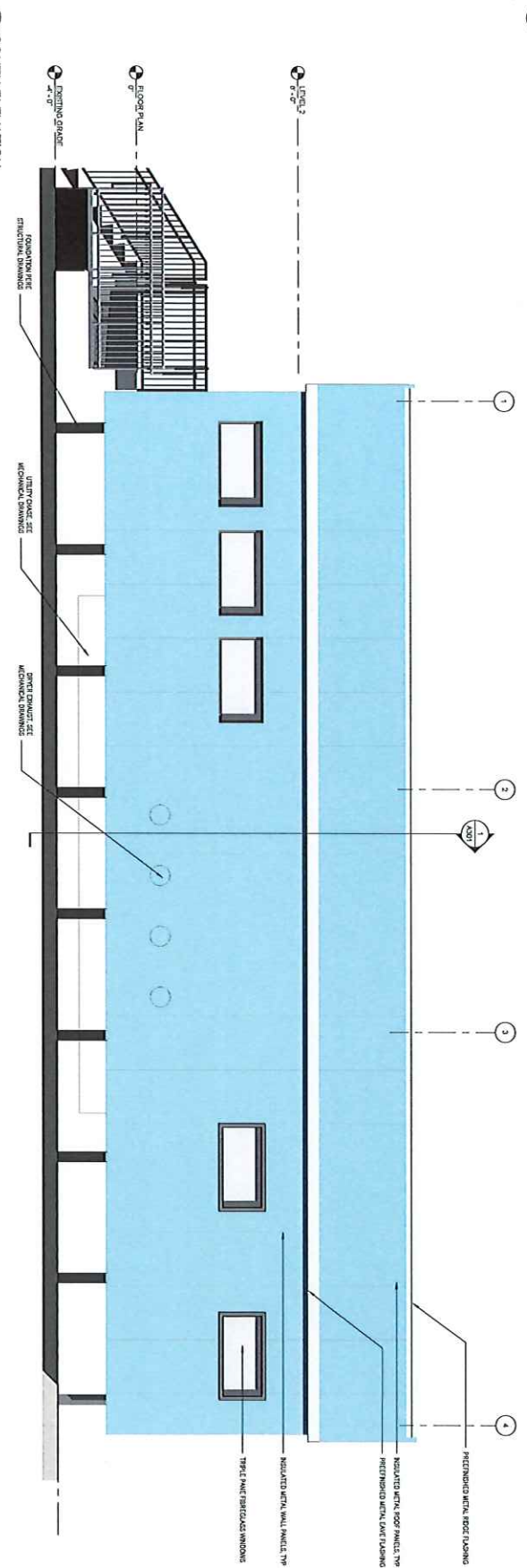
Sheet Contents
EXTERIOR ELEVATIONS

Sheet No.
A201

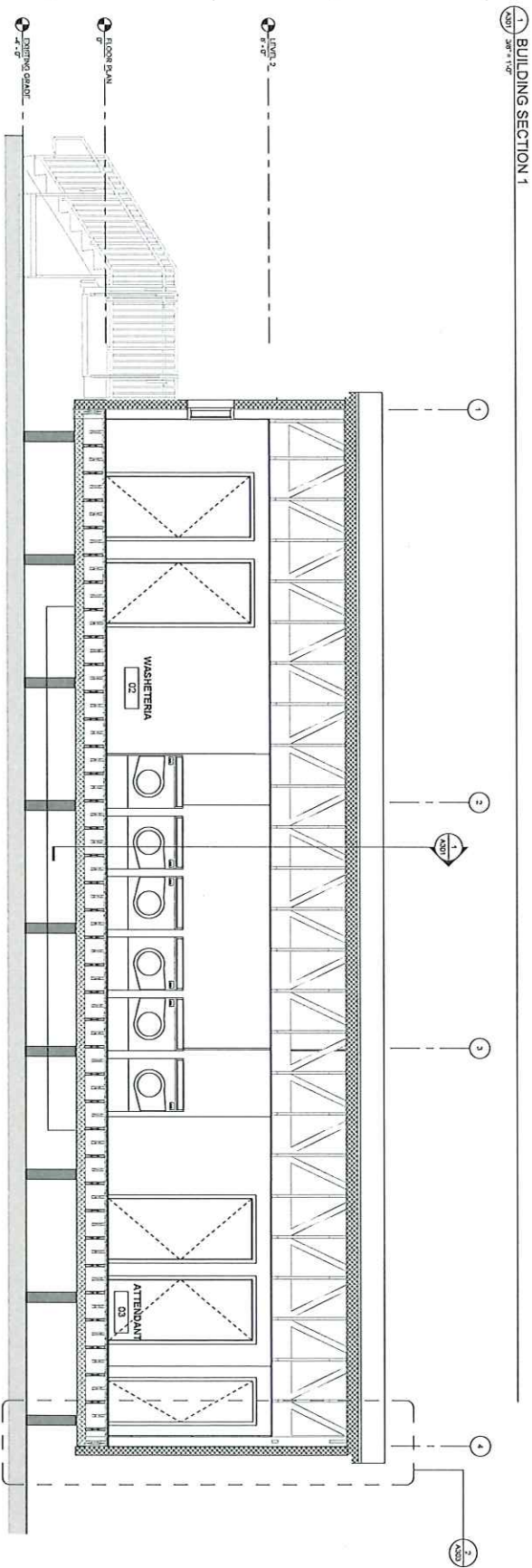
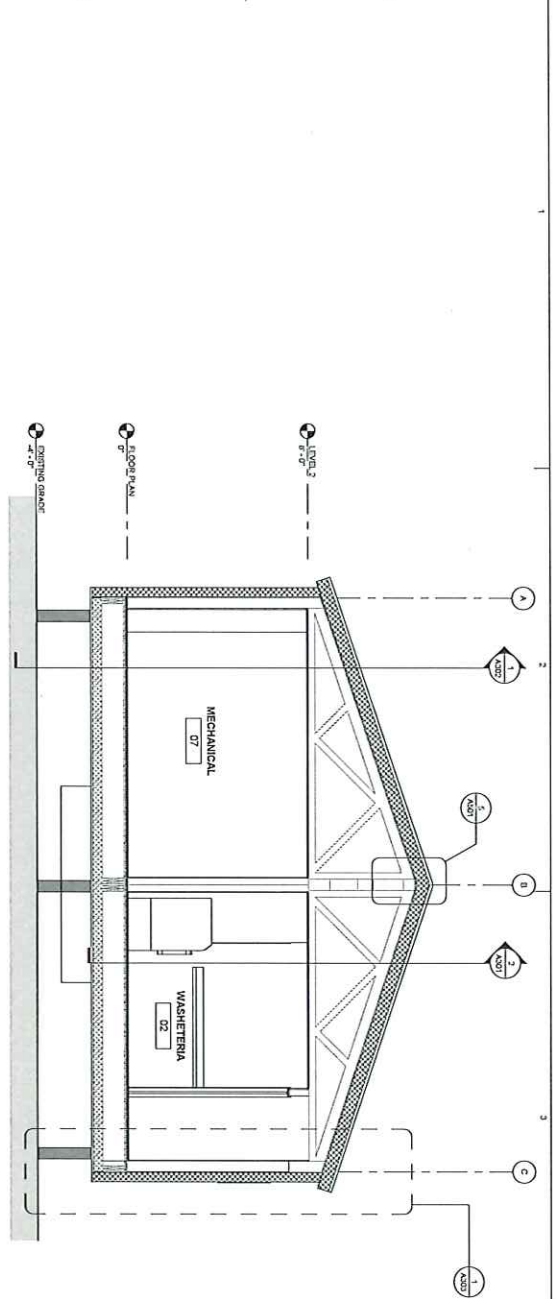
2 WEST ELEVATION
1/8" = 1'-0"



1 SOUTH ELEVATION
1/8" = 1'-0"



<p>ARCHITECTS ALASKA</p>	<p>900 W. 5th Avenue, Suite 400 Anchorage, AK, 99501 907.272.2000 191 E. Seward Ave, Ste 400 Wasilla, AK 99587 907.272.1500 www.architectsalaska.com</p>	<p>CLIENT DOWL KOTZEBUE WASHETERIA STREET ADDRESS</p>	<p>35% SCHEMATIC DESIGN</p>	<p>Sheet No. A202</p>										
<table border="1" style="width: 100%; border-collapse: collapse;"> <thead> <tr> <th colspan="2">Revisions</th> </tr> <tr> <th>No.</th> <th>Description</th> </tr> </thead> <tbody> <tr> <td> </td> <td> </td> </tr> <tr> <td> </td> <td> </td> </tr> <tr> <td> </td> <td> </td> </tr> </tbody> </table>					Revisions		No.	Description						
Revisions														
No.	Description													
<table border="1" style="width: 100%; border-collapse: collapse;"> <tr> <td style="width: 25%;"> <p>Drawn by SP, SAK</p> </td> <td style="width: 25%;"> <p>Date 05-15-24</p> </td> <td style="width: 25%;"> <p>Checked by DLC, DAW</p> </td> <td style="width: 25%;"> <p>Issue No. 202051</p> </td> </tr> </table>					<p>Drawn by SP, SAK</p>	<p>Date 05-15-24</p>	<p>Checked by DLC, DAW</p>	<p>Issue No. 202051</p>						
<p>Drawn by SP, SAK</p>	<p>Date 05-15-24</p>	<p>Checked by DLC, DAW</p>	<p>Issue No. 202051</p>											
<p>Sheet Contents EXTERIOR ELEVATIONS</p>														



1 BUILDING SECTION 2
1/8" = 1'-0"

1 BUILDING SECTION 1
1/8" = 1'-0"

Sheet No.
A301

Sheet Contents
BUILDING SECTIONS

Revisions	No.	Description	Date

Drawn by: SP, SLD
 Checked: PAK, DLM
 Date: 03/15/24
 Job No.: 230241

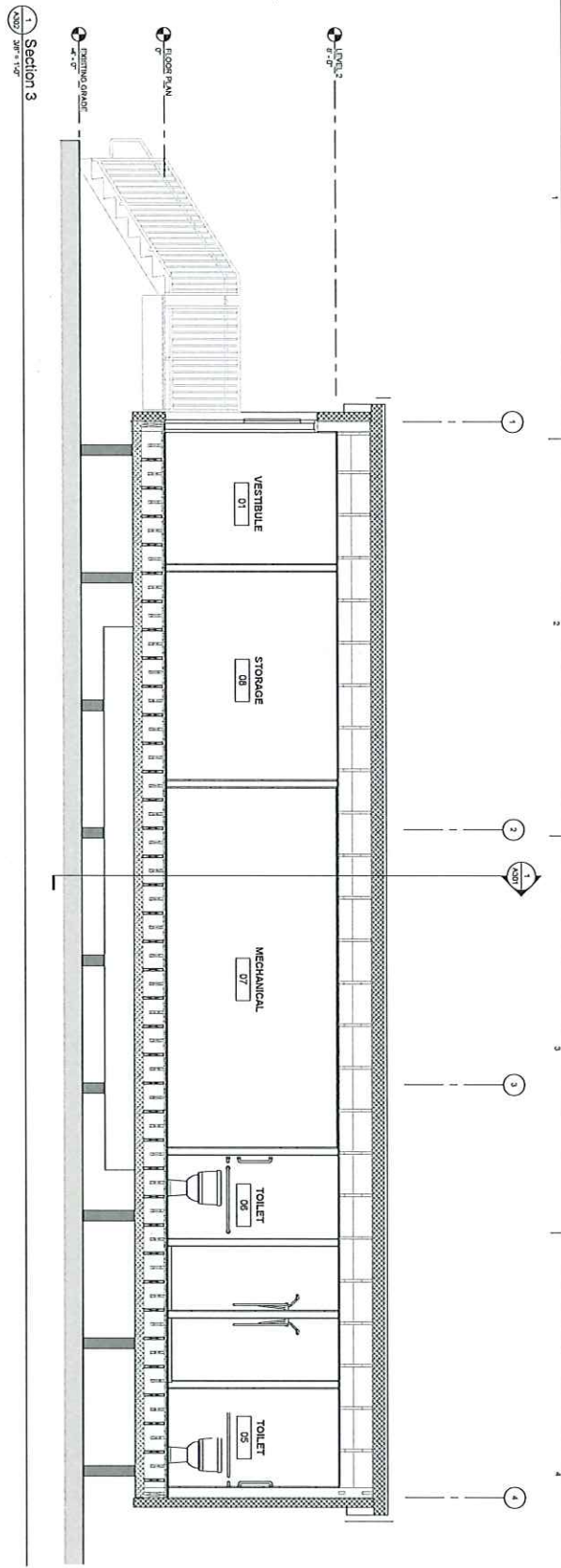
CLIENT
**DOWL KOTZEBUE
 WASHETERIA**
 STREET ADDRESS

35%
 SCHEMATIC
 DESIGN

ARCHITECTS
 ALASKA



3800 W. 5th Avenue, Suite 403
 Anchorage, AK 99515
 407.772.4422
 191 E. Sherman Avenue, Suite 403
 Wasilla, AK 99584
 907.273.1200
 www.dowlarchitects.com



 <p>ARCHITECTS ALASKA</p> <p>300 W. 20th Avenue, Suite 403 Anchorage, AK, 99501 191 E. Summer Avenue, Suite 403 Wasilla, AK, 99584 507.273.1200 www.architectsalaska.com</p>	<p>CLIENT</p> <p>DOWL KOTZEBUE WASHETERIA</p> <p>STREET ADDRESS</p>	<p>35% SCHEMATIC DESIGN</p>	<p>Sheet No.</p> <p>A302</p>
--	--	-------------------------------------	-------------------------------------

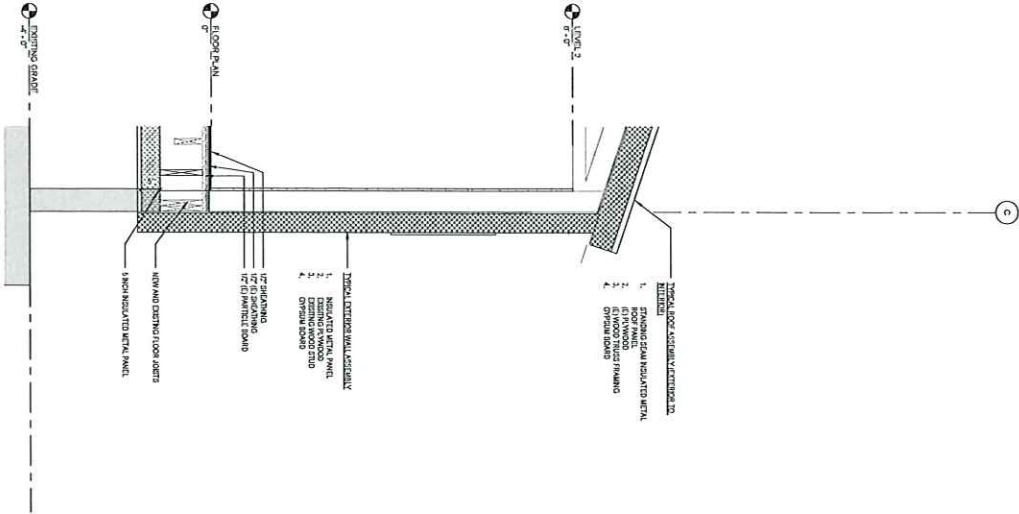
REVISIONS	
No.	Description

Drawn by	Date
gfr, SLD	03-15-24
Checked	Job No.
DAK, DAK	200201

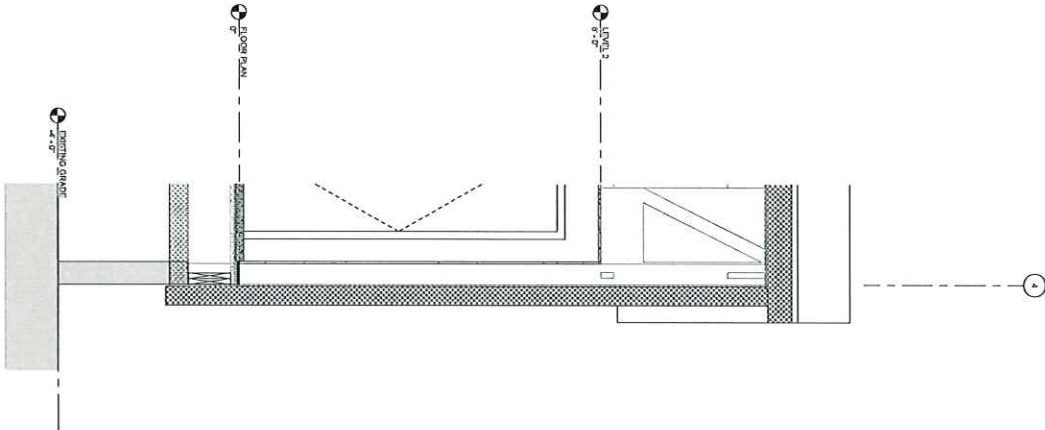
Sheet Contents

BUILDING SECTION

1 BUILDING SECTION 1 - Callout 3
3/8" = 1'-0"



2 BUILDING SECTION 2 - Callout 2
3/8" = 1'-0"



Revisions		
No.	Description	Date

Drawn by	Date
97 SLD	03.15.24
Checked	Job No.
DCL/DH	200281

Sheet Contents
WALL SECTIONS

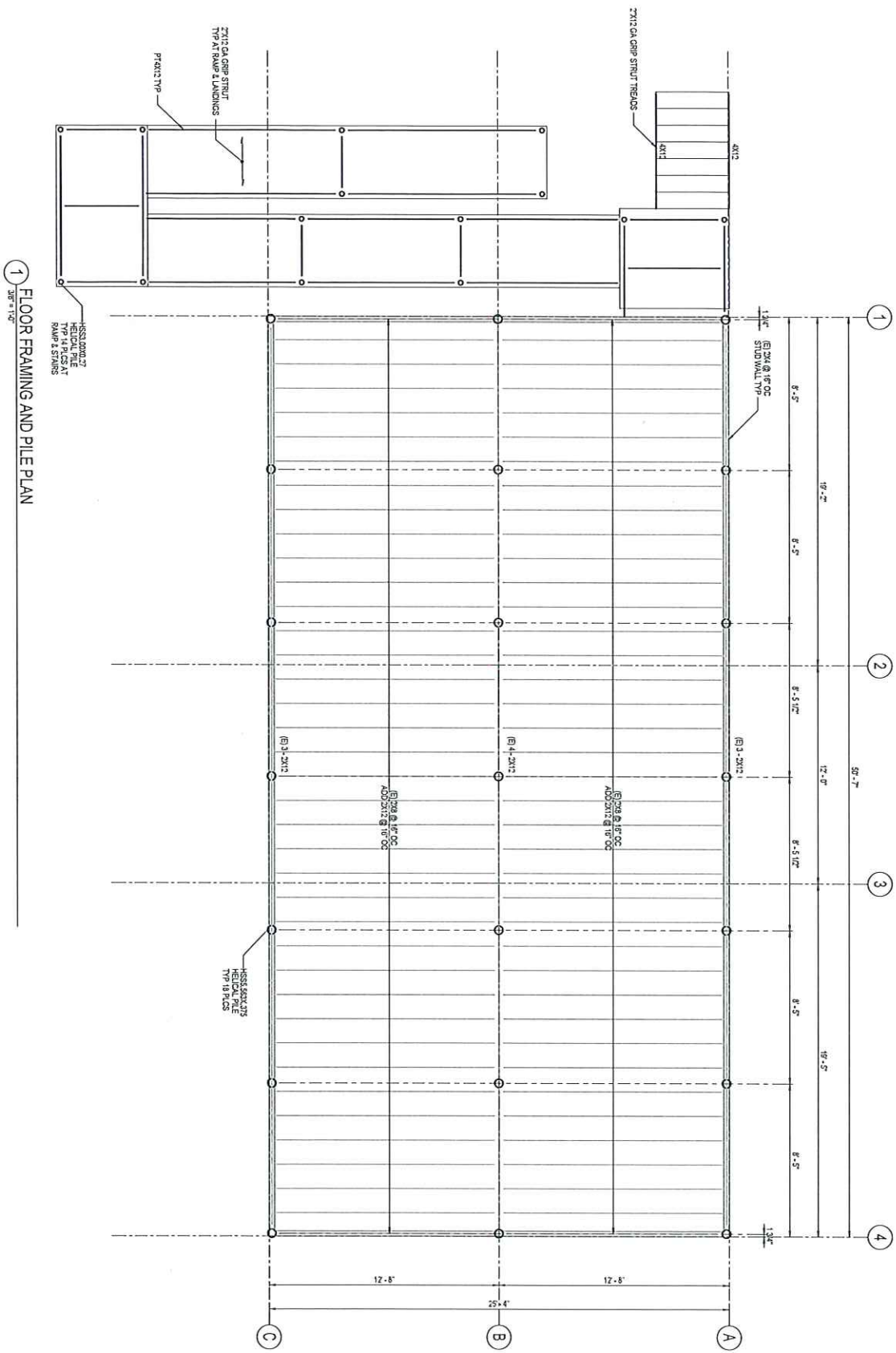
Sheet No.
A303

CLIENT
**DOWL KOTZEBUE
WASHETERIA**
STREET ADDRESS

35%
SCHEMATIC
DESIGN

390 W. 5th Avenue, Suite 403
Anchorage, AK 99501
191 E. Dimension Avenue, Suite 403
Wasilla, AK 99584
907.276.7500
www.ditcheranddolan.com





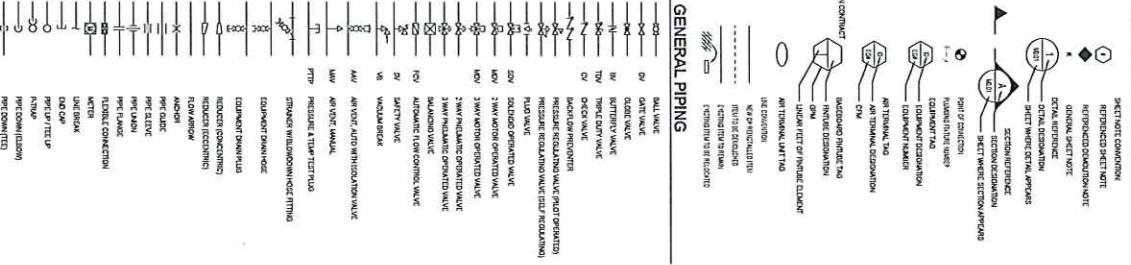
1 FLOOR FRAMING AND PILE PLAN
3/8" = 1'-0"

	500 W. 2nd Avenue, Suite 400 Anchorage, AK, 99501 Phone: 907.562.2200 Fax: 907.562.2201 Website: AIA 9054 507.272.1500 www.architectsalaska.com		BBFM Builders Inc. 10000 E. 1st Avenue, Suite 400 Anchorage, AK, 99504 Phone: 907.562.2200 Fax: 907.562.2201 Website: AIA 9054 507.272.1500	<h2 style="margin: 0;">DOWL KOTZEBUE WASHETERIA</h2>	Sheet No. <h1 style="margin: 0;">S101</h1>																
<table border="1" style="width: 100%; border-collapse: collapse;"> <thead> <tr> <th colspan="4">Revisions</th> </tr> <tr> <th>No.</th> <th>Description</th> <th>Date</th> <th>By</th> </tr> </thead> <tbody> <tr> <td> </td> <td> </td> <td> </td> <td> </td> </tr> <tr> <td> </td> <td> </td> <td> </td> <td> </td> </tr> </tbody> </table>						Revisions				No.	Description	Date	By								
Revisions																					
No.	Description	Date	By																		
<table border="1" style="width: 100%; border-collapse: collapse;"> <tr> <td style="width: 25%;"> Drawn by: HED Checked: TYP Title: SHEET COMMENTS FLOOR FRAMING AND PILE PLAN </td> <td style="width: 25%;"> Date: 5/22/2024 Job No.: 222066 </td> </tr> </table>						Drawn by: HED Checked: TYP Title: SHEET COMMENTS FLOOR FRAMING AND PILE PLAN	Date: 5/22/2024 Job No.: 222066														
Drawn by: HED Checked: TYP Title: SHEET COMMENTS FLOOR FRAMING AND PILE PLAN	Date: 5/22/2024 Job No.: 222066																				

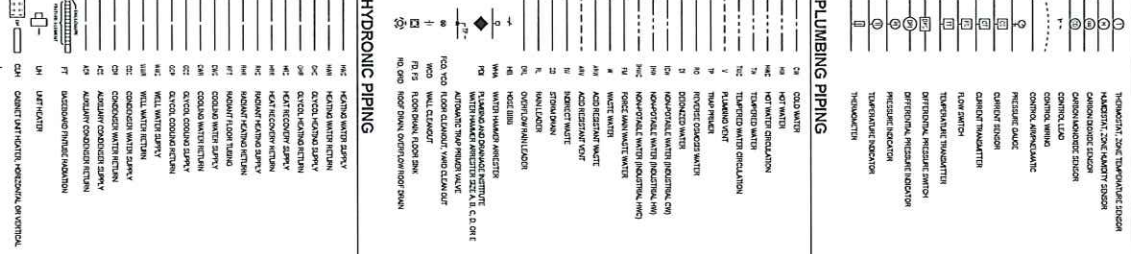
ABBREVIATIONS

AT	AIR TREATMENT
AV	AIR VENT
AW	AIR WASH
AWM	AIR WASH MANIFOLD
AWV	AIR WASH VALVE
AWW	AIR WASH WASH
AWY	AIR WASH YARD
AWZ	AIR WASH ZONE
AWA	AIR WASH AREA
AWB	AIR WASH BUILDING
AWC	AIR WASH CURB
AWD	AIR WASH DRIVE
AWE	AIR WASH ENTRANCE
AWF	AIR WASH FLOOR
AWG	AIR WASH GARAGE
AWH	AIR WASH HALL
AWI	AIR WASH INTERIOR
AWJ	AIR WASH JUNCTION
AWK	AIR WASH KITCHEN
AWL	AIR WASH LAUNDRY
AWM	AIR WASH MACHINERY
AWN	AIR WASH NEST
AWO	AIR WASH OFFICE
AWP	AIR WASH PARKING
AWQ	AIR WASH QUARTERS
AWR	AIR WASH RESTROOM
AWS	AIR WASH SERVICE
AWT	AIR WASH TREATMENT
AWV	AIR WASH VENTILATION
AWW	AIR WASH WASH
AWX	AIR WASH WORKSHOP
AWY	AIR WASH YARD
AWZ	AIR WASH ZONE
AWA	AIR WASH AREA
AWB	AIR WASH BUILDING
AWC	AIR WASH CURB
AWD	AIR WASH DRIVE
AWE	AIR WASH ENTRANCE
AWF	AIR WASH FLOOR
AWG	AIR WASH GARAGE
AWH	AIR WASH HALL
AWI	AIR WASH INTERIOR
AWJ	AIR WASH JUNCTION
AWK	AIR WASH KITCHEN
AWL	AIR WASH LAUNDRY
AWM	AIR WASH MACHINERY
AWN	AIR WASH NEST
AWO	AIR WASH OFFICE
AWP	AIR WASH PARKING
AWQ	AIR WASH QUARTERS
AWR	AIR WASH RESTROOM
AWS	AIR WASH SERVICE
AWT	AIR WASH TREATMENT
AWV	AIR WASH VENTILATION
AWW	AIR WASH WASH
AWX	AIR WASH WORKSHOP
AWY	AIR WASH YARD
AWZ	AIR WASH ZONE

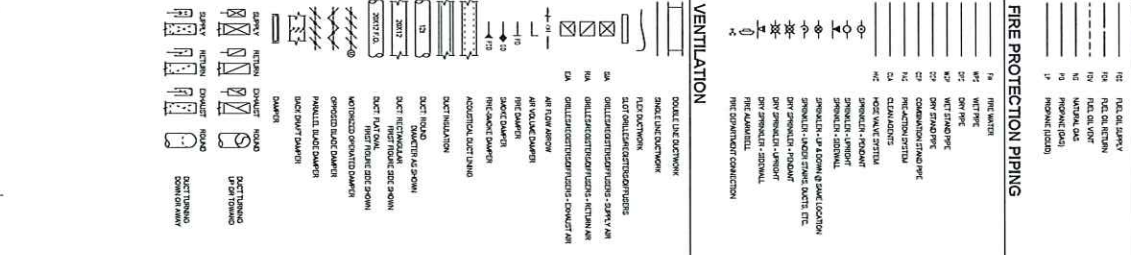
GENERAL



MONITORING AND CONTROLS



FUEL PIPING



FIRE PROTECTION PIPING



VENTILATION



DRAWING INDEX

NO.	DESCRIPTION
101	MECHANICAL LEGEND
102	MECHANICAL SCHEDULES
103	MECHANICAL SYMBOLS
104	MECHANICAL NOTATION
105	MECHANICAL DIMENSIONS
106	MECHANICAL MATERIALS
107	MECHANICAL FINISHES
108	MECHANICAL TOLERANCES
109	MECHANICAL CONNECTIONS
110	MECHANICAL NOTES

EM ENGINEERS
 1515 N. Main Street, Suite 1000
 Chicago, IL 60610
 Tel: (773) 327-1234
 Fax: (773) 327-5678
 www.emengineers.com

35% SCHEMATIC DESIGN

CLIENT
**DOWL KOTZEBUE
 WASHETERIA**
 STREET ADDRESS

Revisions	No.	Description	Date

Sheet No. **M001**

PLUMBING FIXTURE CONNECTION SCHEDULE

SYMBOL	LOCATION	ROOM	TYPE	UNIT	QTY	UNIT	ROOM	REMARKS
WC-01	MECHANICAL ROOM	WC-01	WC	1	1	1	MECHANICAL ROOM	1.0000
LA-01	MECHANICAL ROOM	LA-01	LA	1	1	1	MECHANICAL ROOM	1.0000
SH-01	MECHANICAL ROOM	SH-01	SH	1	1	1	MECHANICAL ROOM	1.0000
FM-01	MECHANICAL ROOM	FM-01	FM	1	1	1	MECHANICAL ROOM	1.0000

MISCELLANEOUS EQUIPMENT SCHEDULE

SYMBOL	LOCATION	ROOM	TYPE	UNIT	QTY	UNIT	ROOM	REMARKS
M-01	MECHANICAL ROOM	M-01	M	1	1	1	MECHANICAL ROOM	1.0000

BOILER SCHEDULE

SYMBOL	LOCATION	ROOM	TYPE	UNIT	QTY	UNIT	ROOM	REMARKS
B-01	MECHANICAL ROOM	B-01	B	1	1	1	MECHANICAL ROOM	1.0000

EXPANSION TANK SCHEDULE

SYMBOL	LOCATION	ROOM	TYPE	UNIT	QTY	UNIT	ROOM	REMARKS
E-01	MECHANICAL ROOM	E-01	E	1	1	1	MECHANICAL ROOM	1.0000

PUMP SCHEDULE

SYMBOL	LOCATION	ROOM	TYPE	UNIT	QTY	UNIT	ROOM	REMARKS
P-01	MECHANICAL ROOM	P-01	P	1	1	1	MECHANICAL ROOM	1.0000

FAN SCHEDULE

SYMBOL	LOCATION	ROOM	TYPE	UNIT	QTY	UNIT	ROOM	REMARKS
F-01	MECHANICAL ROOM	F-01	F	1	1	1	MECHANICAL ROOM	1.0000

TERMINAL HEATING UNIT SCHEDULE

SYMBOL	LOCATION	ROOM	TYPE	UNIT	QTY	UNIT	ROOM	REMARKS
T-01	MECHANICAL ROOM	T-01	T	1	1	1	MECHANICAL ROOM	1.0000

3

REVISIONS

No.	Description	Date
1	Issue for Review	6/22/2024
2	Issue for Construction	6/22/2024

Client Name: MECHANICAL SCHEDULES

Sheet No.: M002

CLIENT

DOWL KOTZEBUE WASHETERIA
STREET ADDRESS

35% SCHEDULE DESIGN

MECHANICAL SCHEDULES

Sheet No. M002

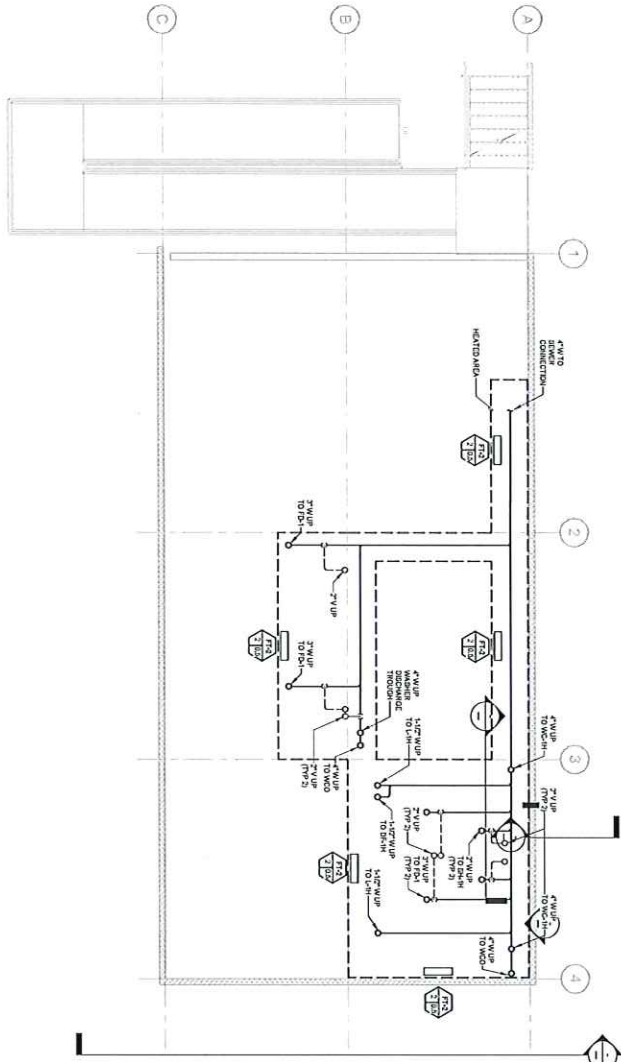
MEP ENGINEERS
1500 West 10th Street, Suite 100
Wichita, Kansas 67203
Tel: (316) 262-1234
Fax: (316) 262-1235
www.mepengineers.com

35% SCHEDULE DESIGN

MECHANICAL SCHEDULES

Sheet No. M002

1 UNDERFLOOR PLAN
DATE: 1/4 - 1/24



GENERAL NOTES
1. ORIGINAL NOTE
2. ORIGINAL NOTE
3. ORIGINAL NOTE

SHEET NOTES
1. SHEET NOTE
2. SHEET NOTE
3. SHEET NOTE

Sheet No.
M200

Client Name
UNDERFLOOR PLAN

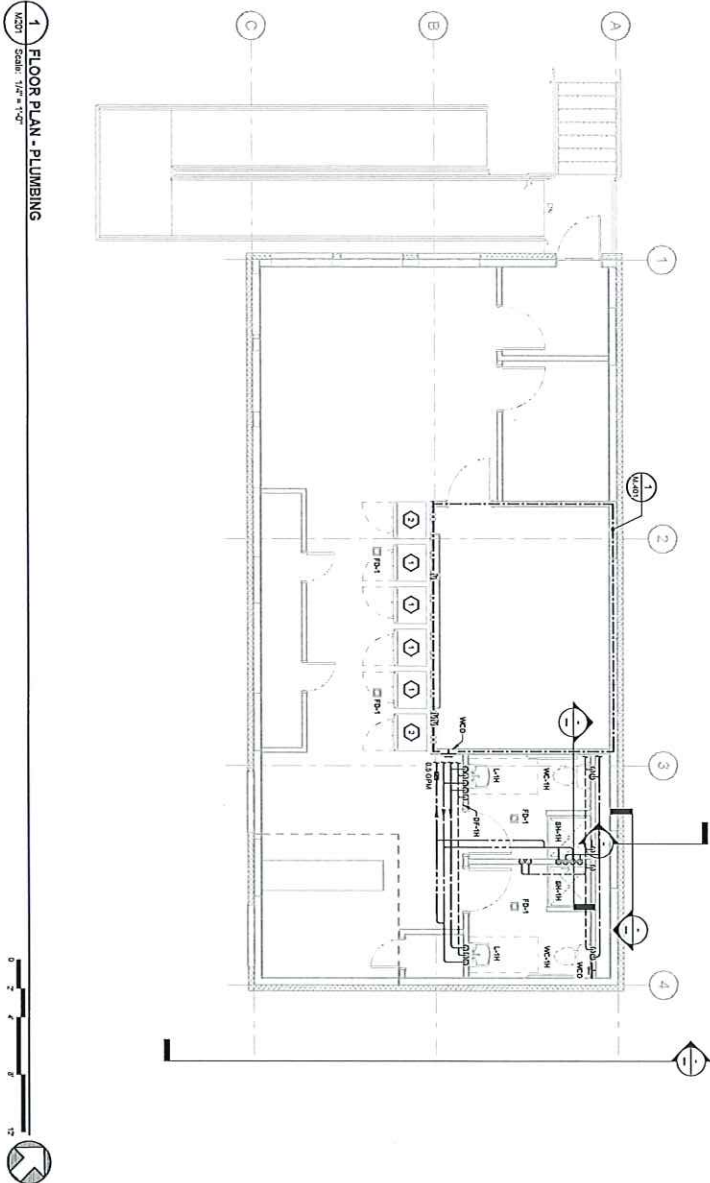
Revisions	No.	Description	Date

CLIENT
**DOWL KOTZEBUE
WASHETERIA**
STREET ADDRESS

**35%
SCHEMATIC
DESIGN**



2022 Yorkville Professional Building
15780 Midland Avenue, Unit 404
Midland, Ontario M26 1L5
Tel: 416-291-1111
www.ane-engineers.com



1 FLOOR PLAN - PLUMBING
 Scale: 1/4" = 1'-0"

GENERAL NOTES

- 1. ORIGINAL NOTE
- 2. ORIGINAL NOTE

SHEET NOTES

- 1. FIELD CHECK SHALL VERIFY CORRESPONDING COMMERCIAL WORK WITH
- 2. ORIGINAL AND CORRECTIVE WORK SHALL BE COMPLETED, MAJOR WORK
- 3. OTHER WORK SHALL BE IDENTIFIED AND COMPLETED AS FOUND DURING

Sheet No.
M201

Client Contact:
 Floor Plan - Number:

Revisions	No.	Description	Date

CLIENT
**DOWL KOTZEBUE
 WASHETERIA**
 STREET ADDRESS

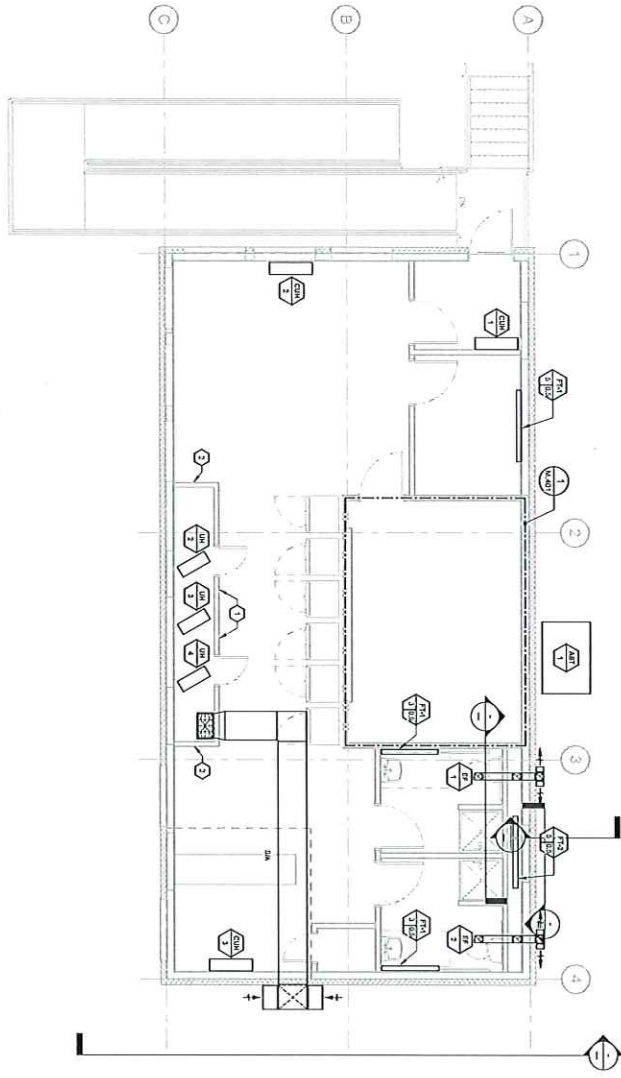
**35%
 SCHEMATIC
 DESIGN**



2025 07/04 10:48 AM
 15166 Main Street, Suite 100
 Minneapolis, MN 55414
 612.338.1387
 www.ane-engineers.com



1 FLOOR PLAN - HVAC
DATE: 11/1/2023
SCALE: 1/4" = 1'-0"



GENERAL NOTES

- 1. GENERAL NOTE
- 2. GENERAL NOTE

SHEET NOTES

- 1. ALL WORK SHALL BE IN ACCORDANCE WITH THE CITY OF WASHINGTON CODES.
- 2. ALL WORK SHALL BE IN ACCORDANCE WITH THE CITY OF WASHINGTON CODES.



ANME ENGINEERS
 1190 N. WASHINGTON BLVD., SUITE 100
 WASHINGTON, DC 20004
 (202) 775-1100
 www.anmeengineers.com

35% SCHEMATIC DESIGN

CLIENT
DOWL KOTZEBUE WASHETERIA
 STREET ADDRESS

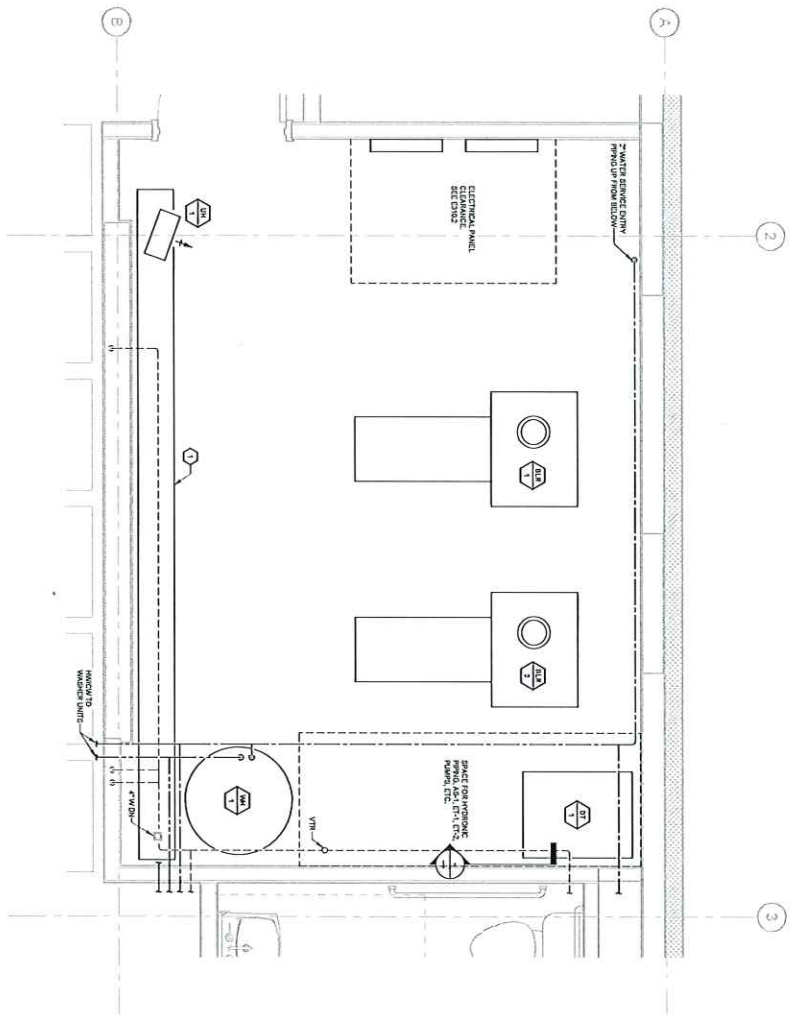
Revisions	No.	Description	Date

Drawn By	Date
Checked	

Client Comments
 FLOOR PLAN - HVAC

Sheet No.
M301

1 ENLARGED PLANS AND SECTIONS - MECHANICAL ROOM
 Scale: 3/8" = 1'-0"



GENERAL NOTES
 1. ORIGINAL NOTE
 2. REVISION NOTE

SHEET NOTES
 1. UNRECORDED SERVICE/LOADS/NOTES/REVISIONS/DETAILED FROM WORKSHEETS
 2. FROM 1 OF THIS SHEET

Revisions	No.	Description	Date

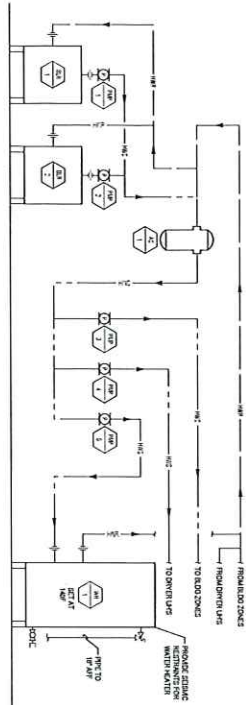
Drawn by	DRD/ML
Checked	JAB/ML

Sheet No.	M401
-----------	------

CLIENT
DOWL KOTZEBUE
WASHETERIA
STREET ADDRESS

**35%
 SCHEMATIC
 DESIGN**





1 DIAGRAM - HEATING
SCALE: 1:1

2 DETAIL
SCALE: NONE

3 DETAIL
SCALE: NONE

4 DETAIL
SCALE: NONE

5 DETAIL
SCALE: NONE

 <p>ANE ENGINEERS CONSULTANTS</p> <p>15-16/20, Madhav Nagar, 1st Stage, 8th Cross, 1st Block, Jayanagar, Bangalore - 560011 Ph: 98456 78901 www.aneengineers.com</p>	<p>35% SCHEMATIC DESIGN</p>	<p>CLIENT DOWL KOTZEBUE WASHETERIA STREET ADDRESS</p>	<p>Revisions</p> <table border="1"> <thead> <tr> <th>No.</th> <th>Description</th> <th>Date</th> </tr> </thead> <tbody> <tr> <td> </td> <td> </td> <td> </td> </tr> <tr> <td> </td> <td> </td> <td> </td> </tr> <tr> <td> </td> <td> </td> <td> </td> </tr> <tr> <td> </td> <td> </td> <td> </td> </tr> </tbody> </table>	No.	Description	Date												
			No.	Description	Date													
<p>Drawn By: [Name]</p> <p>Checked: [Name]</p> <p>Date: [Date]</p> <p>Job No.: [Job No.]</p> <p>Proj. No.: [Proj. No.]</p>																		
<p>Sheet Contents:</p> <p>DIAGRAM AND DETAILS - HVAC</p>																		
<p>Sheet No. M601</p>																		

1 SITE PLAN - ELECTRICAL
E101 Scale: 1"=30'



- SHEET NOTES**
1. COMPANETS WITH LICENSED ELECTRICAL ASSOCIATION FOR INSTALLATION OF
 2. PROVIDE ALL NECESSARY PERMITS AND DISCONNECT AT LOCATION INDICATED.
 3. PROVIDE ALL NECESSARY PERMITS AND DISCONNECT AT LOCATION INDICATED.
 4. PROVIDE ALL NECESSARY PERMITS AND DISCONNECT AT LOCATION INDICATED.



800 N. 10th Avenue, Suite 400
 Minneapolis, MN 55401
 612.773.2877
 151 E. Exchange Avenue, Suite 400
 Minneapolis, MN 55401
 612.773.7850
 www.angeers.com

ANGEERS ENGINEERS
 151 E. Exchange Avenue, Suite 400
 Minneapolis, MN 55401
 612.773.2877
 612.773.7850
 www.angeers.com

35% SCHEMATIC DESIGN

CLIENT
DOWL KOTZEBUE
WASHETERIA
 STREET ADDRESS

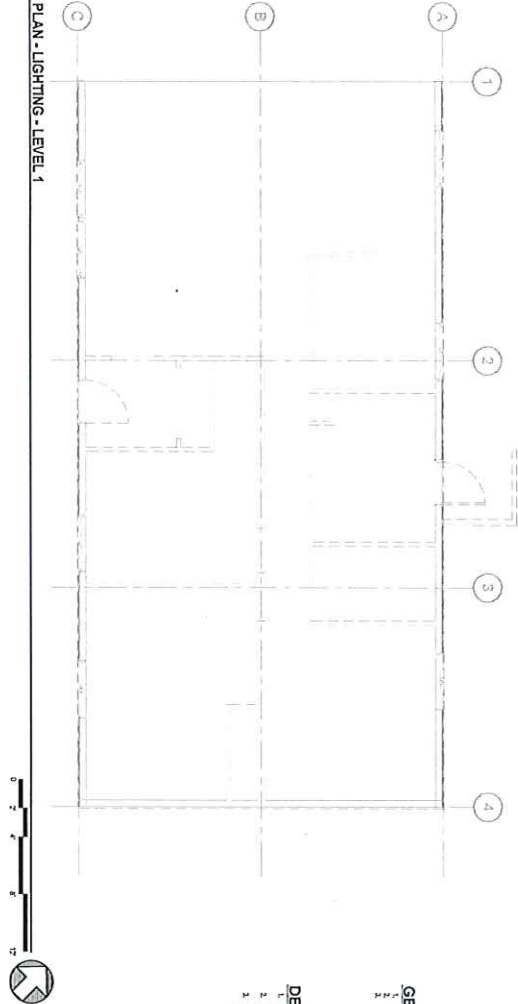
REVISIONS	
No.	Description

Checked By	Date
Checked	Date

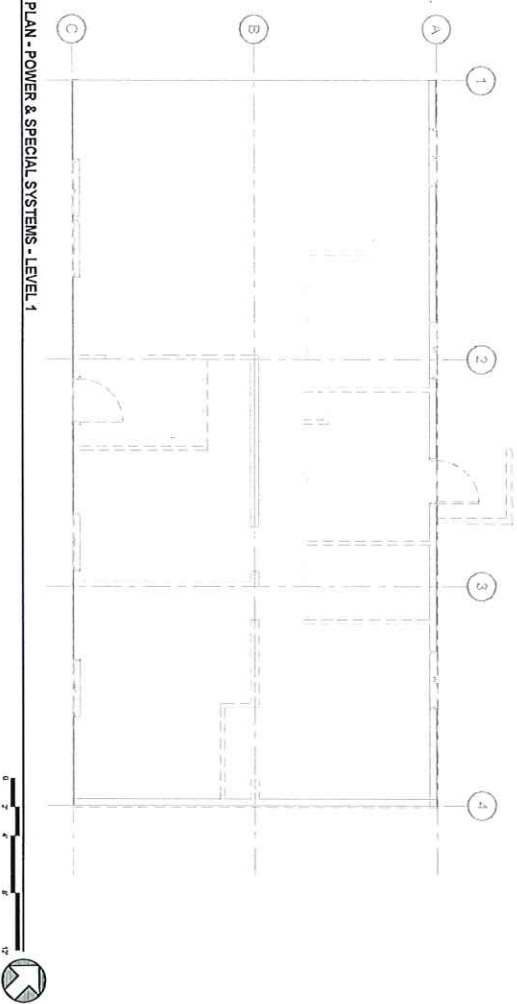
Sheet Contents
 SITE PLAN - ELECTRICAL

Sheet No.
E101

1 DEMOLITION PLAN - LIGHTING - LEVEL 1
 E210 Scale: 1/4" = 1'-0"



2 DEMOLITION PLAN - POWER & SPECIAL SYSTEMS - LEVEL 1
 E210 Scale: 1/4" = 1'-0"



GENERAL NOTES

- 1. GENERAL NOTE
- 2. GENERAL NOTE

DEMOLITION NOTES

- 1. DEMOLITION LOCATIONS, INCLUDING EXISTING CONDUIT AND CONNECTIONS, AND
- 2. DEMOLITION LOCATIONS, INCLUDING EXISTING CONDUIT AND CONNECTIONS, AND
- 3. DEMOLITION LOCATIONS, INCLUDING EXISTING CONDUIT AND CONNECTIONS, AND
- 4. DEMOLITION LOCATIONS, INCLUDING EXISTING CONDUIT AND CONNECTIONS, AND
- 5. DEMOLITION LOCATIONS, INCLUDING EXISTING CONDUIT AND CONNECTIONS, AND
- 6. DEMOLITION LOCATIONS, INCLUDING EXISTING CONDUIT AND CONNECTIONS, AND
- 7. DEMOLITION LOCATIONS, INCLUDING EXISTING CONDUIT AND CONNECTIONS, AND
- 8. DEMOLITION LOCATIONS, INCLUDING EXISTING CONDUIT AND CONNECTIONS, AND
- 9. DEMOLITION LOCATIONS, INCLUDING EXISTING CONDUIT AND CONNECTIONS, AND
- 10. DEMOLITION LOCATIONS, INCLUDING EXISTING CONDUIT AND CONNECTIONS, AND



800 W. 10th Avenue, Suite 403
 Minneapolis, MN 55415
 612.272.2827
 612.272.2800
 www.mncengineers.com

MNC ENGINEERS
 A PROFESSIONAL CORPORATION
 800 W. 10th Avenue, Suite 403
 Minneapolis, MN 55415
 612.272.2827
 612.272.2800
 www.mncengineers.com

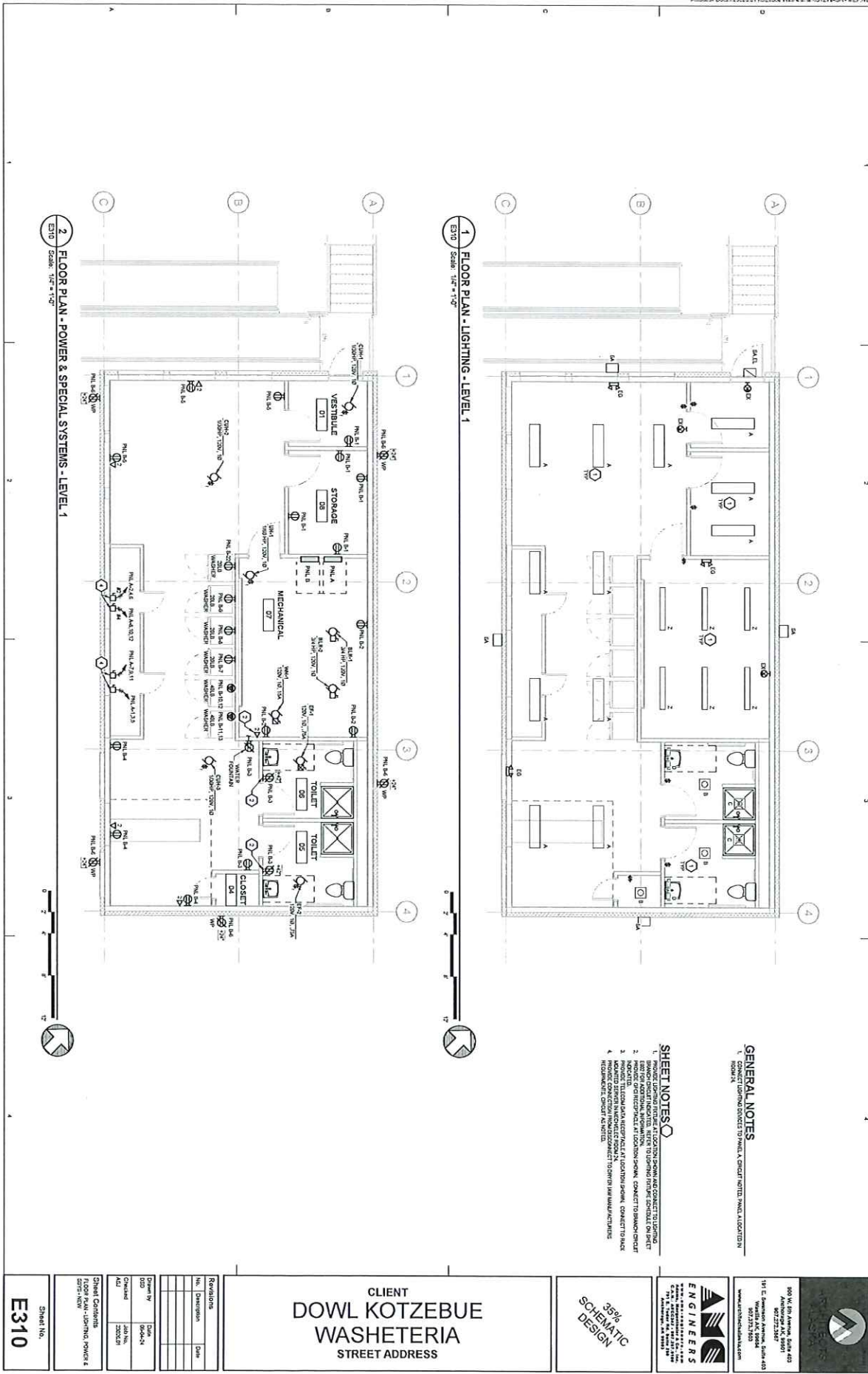
35%
 SCHEMATIC
 DESIGN

CLIENT
**DOWL KOTZEBUE
 WASHETERIA**
 STREET ADDRESS

Revisions	
No.	Description

Drawn by	DAK
Checked	JAB
Ad	JAB

Sheet No.
E210



GENERAL NOTES

1. CONNECT LIGHTING FIXTURES TO PANEL A. CIRCUIT UNITS: SMDL, ADDITION IN ROOM 10.

SHEET NOTES

1. REVISIONS FOR THE DESIGN OF LIGHTING SCHEDULE ON SHEET 10.
2. REVISIONS FOR THE DESIGN OF POWER AND SPECIAL SYSTEMS ON SHEET 10.
3. REVISIONS FOR THE DESIGN OF MECHANICAL AND PLUMBING ON SHEET 10.
4. REVISIONS FOR THE DESIGN OF ELECTRICAL ON SHEET 10.

Sheet No. **E310**

CLIENT
**DOWL KOTZEBUE
 WASHETERIA**
 STREET ADDRESS

**35%
 SCHEMATIC
 DESIGN**

ENGINEERS

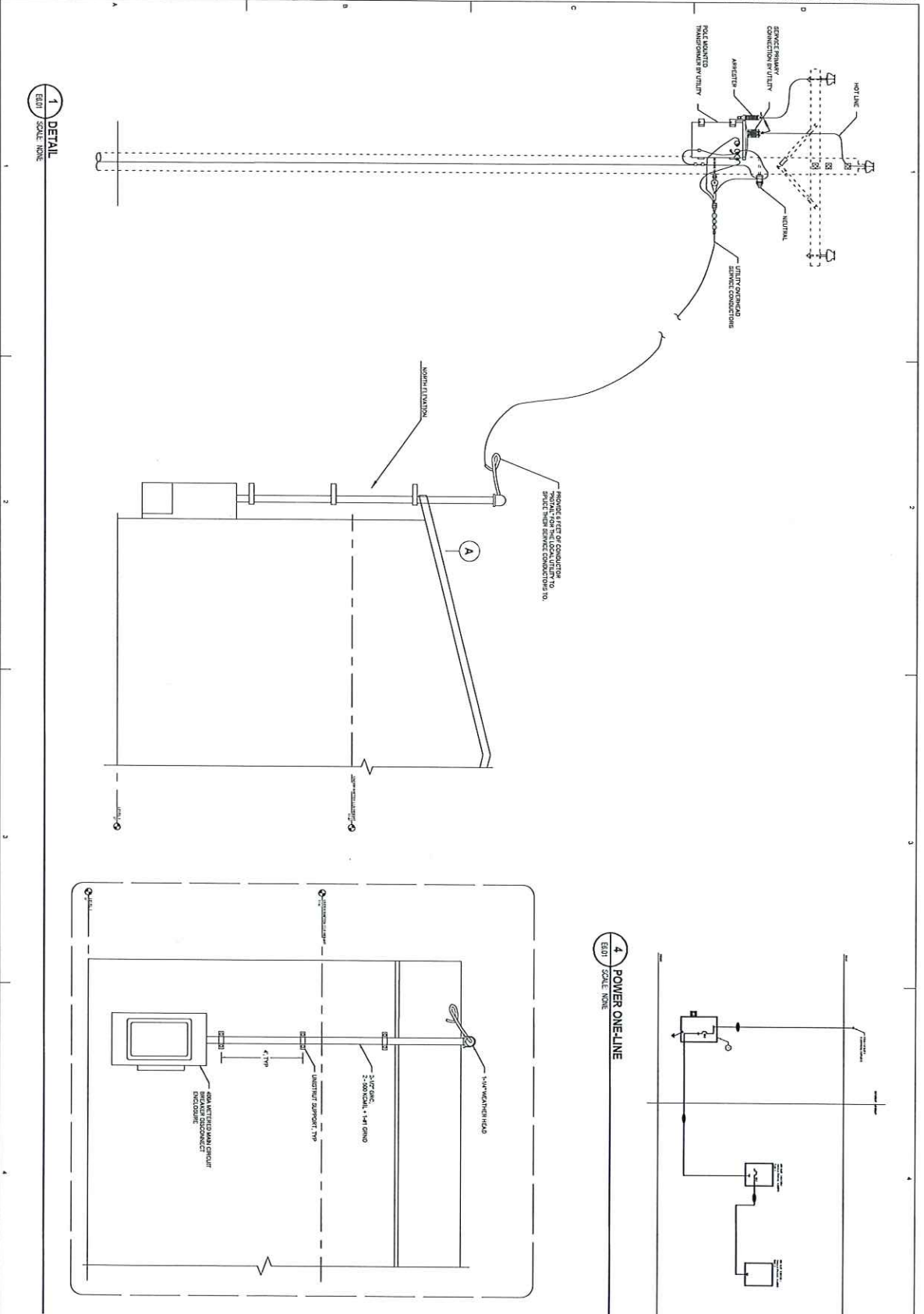
300 W. 1st Avenue, Suite 400
 Westborough, MA 01581
 Phone: 508-753-2287
 Fax: 508-753-2288
 www.thompsoneng.com

300 W. 1st Avenue, Suite 400
 Westborough, MA 01581
 Phone: 508-753-2287
 Fax: 508-753-2288
 www.thompsoneng.com



Revisions		
No.	Description	Date

Sheet Contents		
Code	Description	Date
001	002	003



	800 N 5th Avenue, Suite 403 Annapolis, MD 21403 410.293.4477 131 E. Swanton Avenue, Suite 403 Waldorf, MD 20686 410.326.6400 www.kotzebueash.com	ENGINEERS REGISTERED PROFESSIONAL ENGINEERS STATE OF MARYLAND License No. 15000000000000000000 License No. 15000000000000000000	35% SCHEMATIC DESIGN	CLIENT DOWL KOTZEBUE WASHETERIA STREET ADDRESS	Sheet No. E601																										
<table border="1" style="width: 100%; border-collapse: collapse;"> <thead> <tr> <th colspan="2">Revisions</th> </tr> <tr> <th>No.</th> <th>Description</th> <th>Date</th> </tr> </thead> <tbody> <tr> <td> </td> <td> </td> <td> </td> </tr> <tr> <td> </td> <td> </td> <td> </td> </tr> <tr> <td> </td> <td> </td> <td> </td> </tr> </tbody> </table> <table border="1" style="width: 100%; border-collapse: collapse;"> <tr> <td>Checked</td> <td> </td> <td>Date</td> <td> </td> </tr> <tr> <td> </td> <td> </td> <td> </td> <td> </td> </tr> <tr> <td> </td> <td> </td> <td> </td> <td> </td> </tr> </table> <p style="font-size: small;"> Chief Engineer Designer and Details </p>						Revisions		No.	Description	Date										Checked		Date									
Revisions																															
No.	Description	Date																													
Checked		Date																													