

Legislative Capital Project Priorities

<u>PROJECT TITLE</u>	<u>AMOUNT</u>
1. CAPE BLOSSOM PORT AUTHORITY & DEVELOPMENT	\$5,000,000
<ul style="list-style-type: none"> • \$2.45 Million in PIDP • \$500,000.00 in State of Alaska Capital Project 	
2. WATER & SEWER LINE IMPROVMENTS	\$TBD
<ul style="list-style-type: none"> a. Replace Lift Station 9 & 12 b. Swan Lake Loop Watermain c. Lagoon Water Service Loop Replacement d. Construct New Sewer Force Main e. Sewer Rehabilitation f. Lift Station 8 Rehabilitation 	
3. WATER SOURCE IMPROVEMENTS	\$TBD
<ul style="list-style-type: none"> a. Vortac Lake Dam b. Devil's Lake 	
4. MULTIPURPOSE BUILDING	\$6,500,000
5. LANDFILL CELL APPLICATION, LANDFILL OPEN NEW CELLS, LANDFILL CLOSURE & POST-CLOSURE CELL C/D	\$TBD
<ul style="list-style-type: none"> • \$750,000.00 from NANA VEI 	
6. EROSION SHORE PROTECTION AND ROAD REHAB	\$21,500,000
<ul style="list-style-type: none"> • \$280,000.00 from VIF • \$50,000.00 from Alaska Community Foundation 	
7. MUNICIPAL ROAD DUST ABATEMENT / ASPHALT PAVING	\$10,000,000
8. BIOMASS PLANT & BALER BUILDING	\$TBD
9. REFUSE CAR CRUSHER	\$TBD
<ul style="list-style-type: none"> • Fully funded through VIF at \$275,000.00 	



P.O. Box 46
Kotzebue, Alaska 99752

City Hall
(907) 442-3401

Police Dept.
(907) 442-3351

Fire Dept.
(907) 442-3404

Public Works
(907) 442-3401

February 1st, 2024

Dear Department of Corrections,

The City of Kotzebue would like to extend our gratitude to the State of Alaska for their continued partnership with us on the community jail funding. As you are aware, the City of Kotzebue services the Northwest Arctic with a facility for incarceration for 11 different communities. The facility holds 10 beds with a staff of 5 people while also being the facility for the Alaska State Troopers. It serves a region of nearly 32000 square miles, and is one of the largest regional jails in the state.

In 2023, the facility housed xx amount of people. To do this, our budget for the local municipality was \$1.7 million for all expenses associated with the jail. While the increase in funding last year met more of our needs, residents of Kotzebue are utilizing \$xx,xxx.xx amount of dollars to subsidize a facility that services 10 additional communities.

We are grateful for the partnership we have with the State of Alaska Department of Corrections and our legislative delegation who have prioritized public safety for our communities. We would like to request that the DoC allocate funds for FY24 based on the size of communities serviced and the extent of services provided. We believe the jail is one of many important parts of community and region safety, and that it should not go underfunded.

Thank you,

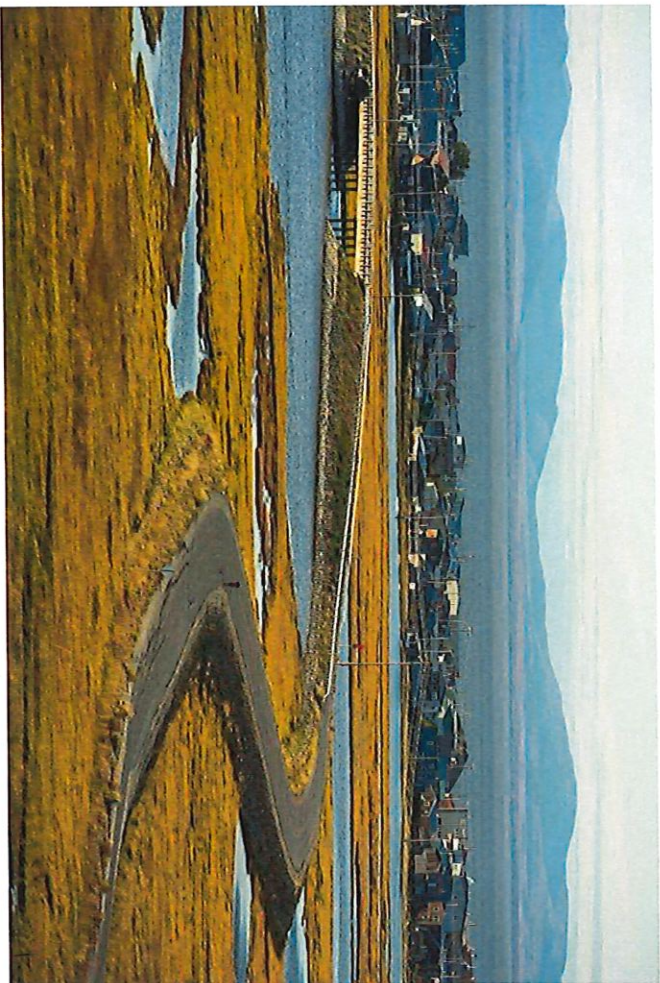
Saima Chase, Mayor
City of Kotzebue

CITY OF KOTZEBUE

GATEWAY TO THE ARCTIC

Capital Project Priorities

2024



INTRODUCTION

Greetings,

It is with joy and pride that I extend our warmest welcome to you all. As the Mayor of City of Kotzebue, I am truly honored to witness the compilation of countless hours of hard work, dedication and collaboration that have gone into creating our capital project priorities. It serves as a testament to our shared history, our vibrant present, and our promising future.

This legislative book is more than a collection of images and words, it is a symbol of our unity, determination and our unwavering spirit to move the City of Kotzebue forward and into the future. Let this booklet be a catalyst for further growth and progress. Let us come together to build a better and brighter future for Kotzebue.

Cape Blossom Road and Port -- a visionary project that has been the topic of discussion for over three decades is becoming reality with funding support from state, federal and partner organizations. The journey was long and challenging but the shared understanding of lowering the cost of living for our residents has kept that dream alive. As a true Arctic Port, Cape Blossom Port would not only benefit residents of the City of Kotzebue but also the entire Northwest Arctic Borough. I am excited with the partnerships and tireless dedication; we are heading towards a new era of economic prosperity and boundless opportunities for the entire region.

Thank you for taking the time to meet with City of Kotzebue Council Members and Administration.

With Warm Regards,

Mayor Saima Chase

City Council Members

- Mayor Saima Chase
- Vice Mayor Derek Haviland-Lie
- Ariana Erlich
- Johnson Greene
- Ernest Norton
- Joushua Hadley
- Kathleen Sherman

Contact

Tessa Baldwin

tbaldwin@kotzebue.org



TABLE OF CONTENTS

1. Community Overview.....	3
2. Cape Blossom Port.....	5
3. Water & Sewer.....	7
4. Water Source Improvements.....	9
5. Emergency Shelter & Multipurpose Building.....	11
6. Landfill.....	13
7. Coastal Protection Phase II.....	15



Picture description

Map of all
4.85" x 8.5"

CAPE BLOSSOM PORT

Picture

#s, factoid

WATER & SEWER LINES

Description

- Gravity sewer
- Below-ground water and sewer system
- Diligent staff
- Continuous water circulation for freeze protection

Community Resiliency

- Fewer service interruptions
- Reduce water losses
- Protect against future climate change

Issues

- Climate change
- Ground motion
- Groundwater
- Materials not suited
- Limited stormwater drainage
- High maintenance costs

Financial Benefits

- Reduce maintenance & repair
- Reduce energy consumption
- Reduce wastewater pumping with less inflow & infiltration
- Reduce water leaks
- Larger water mains reduce pumping costs

Solutions

- Operational changes
- Materials and methods to withstand ground motion
- for snow removal

Priority #1: Water Loops

Swan Lake Loop (1990) & Lagoon Loop

(1995):

- Issues
- Undersized for length (Swan Lake—2.5 miles/Lagoon Loop—4.5 miles)
- Frequent emergency repairs on main and service lines

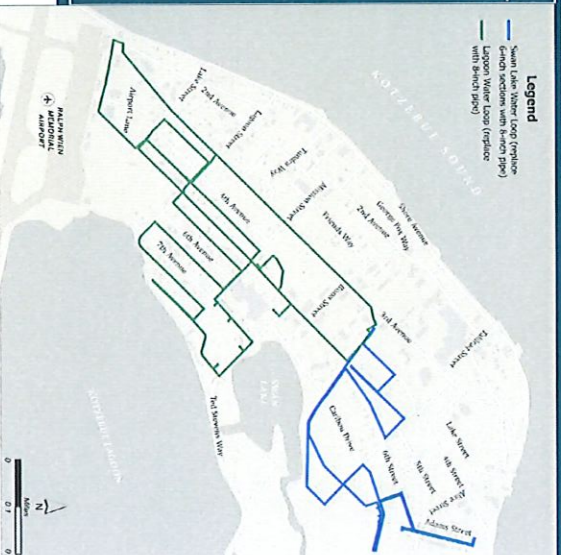
Improvements

- Replace with 8" HDPE mains and new HDPE service lines for added resilience

Status:

Preliminary Engineering Report expected 9/2024.

Funding Request: \$27.5M



#s, factoid

Chart

Text

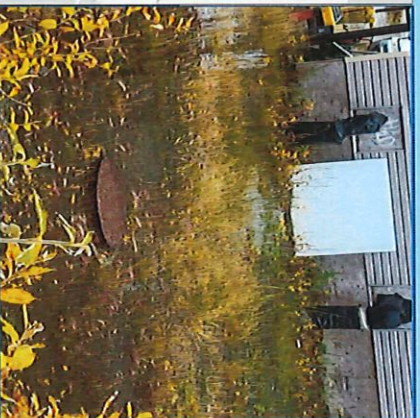
Text

Chart

Pictures

Text

IMPROVEMENTS



Priority #2: Sewer Improvements

Issues

- PVC sewer mains cracking
- Water infiltrating broken pipes
- Rocks getting in lift station pumps

Improvements

- Repair/replace sewer mains with more resilient materials and methods

Status:

Preliminary Engineering Report expected 9/2024

Funding Request: \$6.5M

Priority #3: Stormwater Management

Issues

- Snowmelt and flooding
- Entering manholes (see photo above), possibly broken pipes
- 24/7 operation of List Station 8

Potential Improvements

- New storm drains
- Operational changes for snow removal
- Increase capacity of LS8 & sewer main

Status:

Preliminary Engineering Report expected 9/2024

Funding Request: \$8.8M

WATER SOURCE

Community Health & Resilience

- Vortac Lake has been the backup water source for Kotzebue.
- Decommissioning Vortac Lake would leave Kotzebue without a secondary water source

Safety

- Recent safety inspections determined the dam is dangerous and recommend fixing or breaching the dam.
- Dam is no longer frozen.
- A dam failure could take out the City's raw water main.

Dam Facts

- Dam built in 1966
- Approximately 1,000 feet long and 10 to 12 feet high.
- Designed to be a frozen earthen dam supported on a foundation of frozen ground.

1984



2023



Full Reservoir: Until the early 2000s, the reservoir was maintained near capacity, allowing the City to have a backup water source.

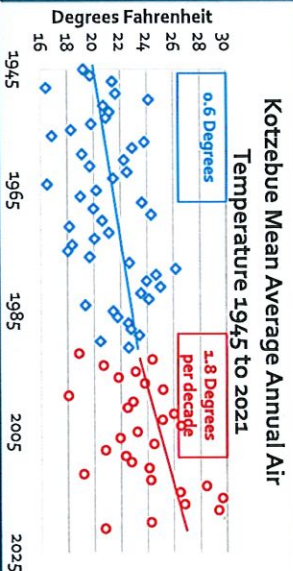
Erosion & Permafrost Thaw: The high water levels and climate change (a 5° F rise in average annual temperature since 1992) has led to erosion of the dam and natural hillsides.

Lower Lake Level: Vortac Lake no longer serves as a backup water source. The City pumps water in the spring and summer months from Vortac lake to Devils Lake or WTP to lower lake levels to mitigate the risk of failure.

Erosion & Permafrost Thaw: The cracking is assumed to be a result of thaw of both the dam and the surrounding permafrost.

IMPROVEMENTS

- #1: Decommission Dam**
- Bathymetric survey of the lake
 - Terrestrial survey of the embankment and surrounding terrain.
 - Geotechnical drilling
 - Breach dam
- #2: Evaluate secondary water source alternatives**
- Test wells would be installed to estimate the feasibility of developing a water source in the thaw bulb under the lake
 - If the thaw bulb is not viable, the alternative of repairing the dam would be compared to developing a new water source at East Lakes, 1.5 miles southwest of Devils Lake.



- Climate change**
- Temperature rising 3x faster than before 1992. See table to left.
 - Thawing permafrost threatens the built environment (water/sewer mains, dams, buildings, etc.)
 - Regional communities impacted by flooding, erosion, and other risks exacerbated by climate change. Kotzebue serves as hub for emergency operations
 - The conditions that the dam was designed for are no longer applicable

Funding request:

Figure—Cross

EMERGENCY SHELTER AND

Regional Vitality and Resilience

- Regional need for emergency shelter
- Regional risk of Floods, Extreme Weather, and Wildland fires
- Currently use school when needed
- Expect to house up to 100 people for days to weeks from outlying villages
- Emergency Operations Center
- Search and rescue

Community Health and Culture

- Current Recreation Center building closed since 2018 due to unsafe conditions
- Rec Center is in poor shape and needs to be demolished
- No public gym available
- Gym, office spaces
- No ADA access to City meetings

Multi-Use Space

- Recreation spaces do double duty for emergency shelter
- Basketball court use as sleeping area emergency shelter
- Workout rooms for children and families
- Locker rooms
- Kitchen
- Storage space
- Upstairs offices and meeting space
- Search and Rescue—City public meetings
- Onsite backup power and communications

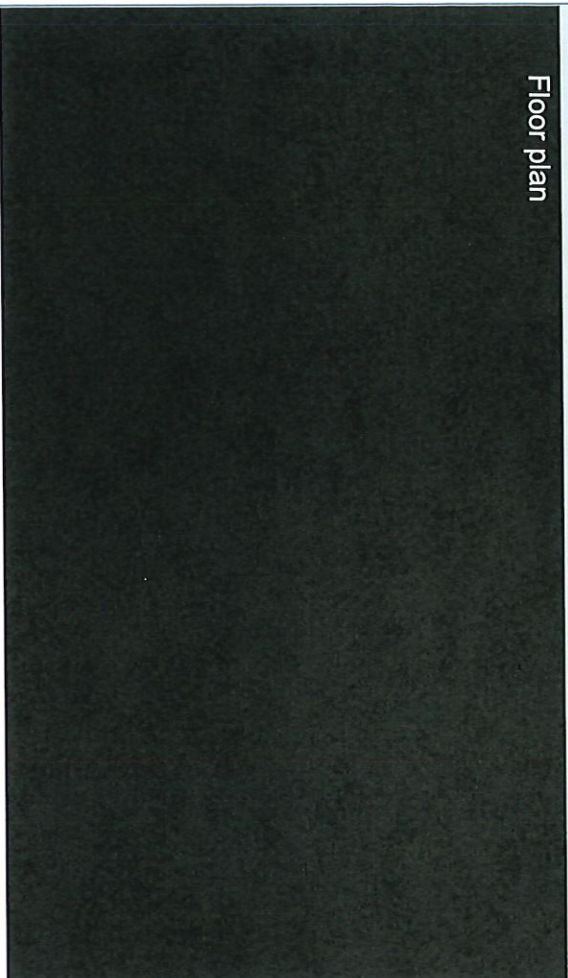


MULTIPURPOSE BUILDING

Conceptual Figure

Status:
Funding Request:

Floor plan



LANDFILL: CONSTRUCTION

Figure—graphic of what C&D will look like w/ rest of landfill

Status:
Funding Request:
Cell 3A—summer 2024 Cell 3B—Current site of material storage. Berms, fencing Connect with 3A. Maintain drainage

“Trash, and our ability to deal with it—while not a glamorous issue—is critical to everyone.”
Lisa Murkowski

Community Resiliency

- Comply with state and federal regulations

Financial Benefits

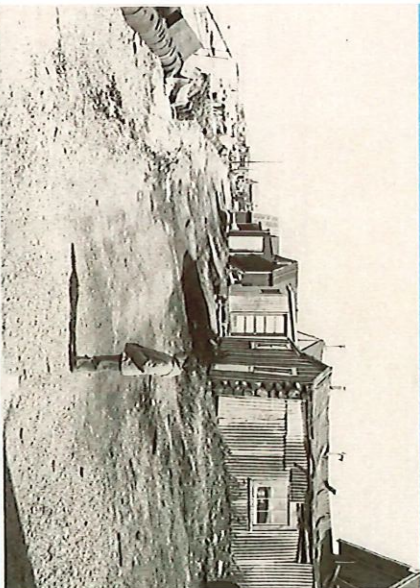
- Reduce costs for construction and demolition by not having to ship waste outside of Kotzebue
- Simplify management of landfill by separating MSW from C&D
- Extend life of landfill



Picture description

AND DEMOLITION CELL

COASTAL PROTECTION



Undated photo: Barrels being used as shore protection

Phase I

Alaska Dept. of Transportation & Public Facilities project included reconstructing and paving 4,400 feet of Shore Avenue, armorring the tidewater side of the road with a combination of sheet pile and large rock, installing street lighting, a sidewalk, space for parallel parking and a bicycle lane.

Issues:

Kotzebue lies on a sandy spit between the Kotzebue Sound and Kotzebue Lagoon. The community does not have natural protections against the strong Arctic storms and sea ice.

Severe fall storms, more common due to later ice formation, cause significant damage to the coastline, houses, and businesses.

Erosion has reduced road capacity, created unsafe driving conditions, and threatened residential and commercial buildings in this area.

During spring breakup, ice masses push up over the north shore damaging roads, homes, and businesses (see photos on next page).

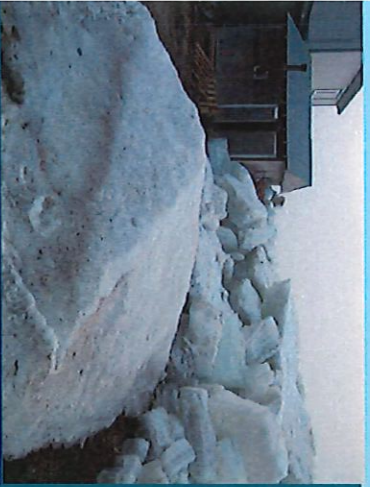
STATUS: Completed in 2011
TOTAL COST: \$42 M (2011)

Maybe pictures of
C&D stuff...



Picture description

PHASE II



Picture description

Diagram for schedule?



Phase II

Extend seawall to the north and east of Crowley Marine Docks to provide the City with protection from severe storms on the north side of the community.

The coastal protection design would likely include both rip-rap revetment structures as well as sheet pile wall.

Important cultural sites, particularly the Tent City area, and commercial areas, such as the Drake barge landing, would not be protected so as to allow for continued and traditional use of these areas.

Status:

Funding Request:

Map of Phase 1 and Phase 2

