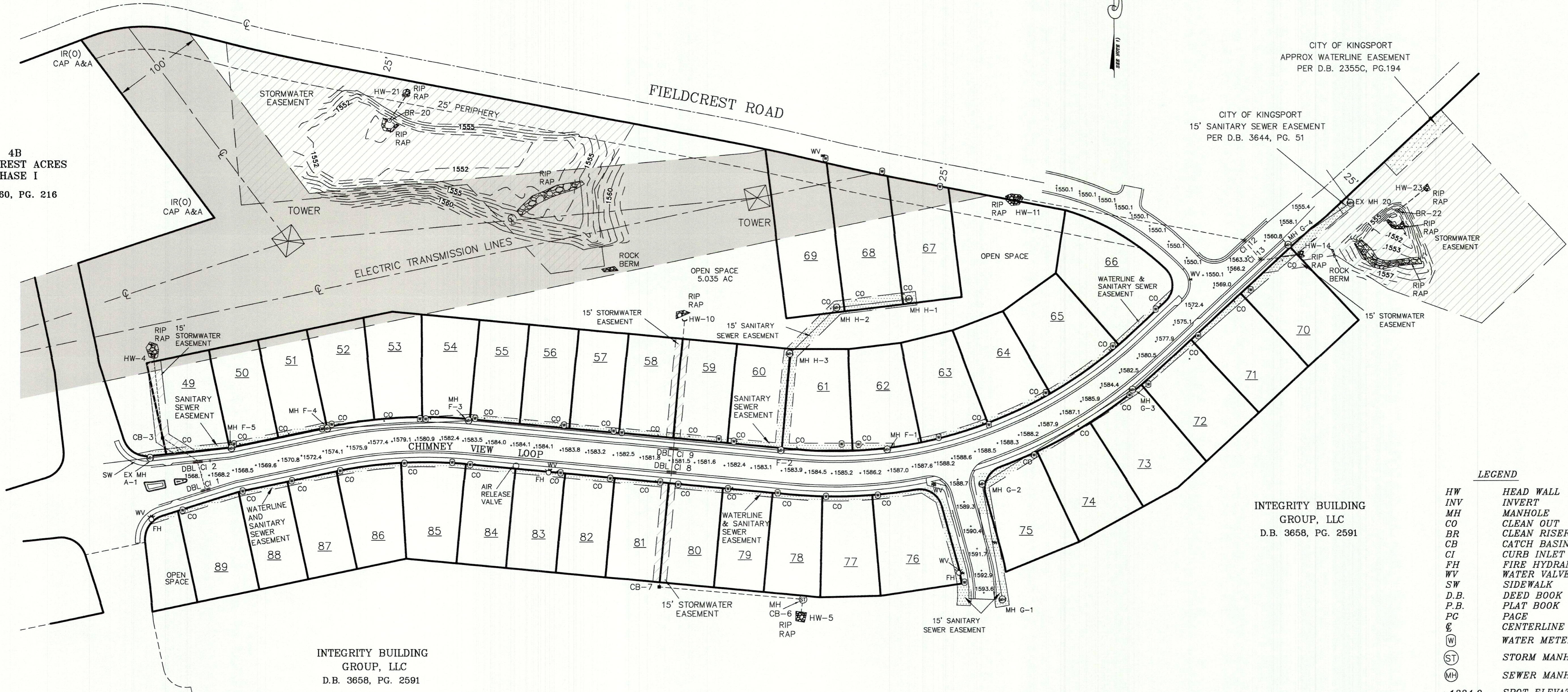


LOCATION MAP
N.T.S.

4B
FIELDCREST ACRES
PHASE I
P.B. 60, PG. 216



LEGEND

- HW HEAD WALL
- INV INVERT
- MH MANHOLE
- CO CLEAN OUT
- BR CLEAN RISER
- CB CATCH BASIN
- CI CURB INLET
- FH FIRE HYDRANT
- WV WATER VALVE
- SW SIDEWALK
- D.B. DEED BOOK
- P.B. PLAT BOOK
- PG PAGE
- CL CENTERLINE
- W WATER METER
- SM STORM MANHOLE
- MH SEWER MANHOLE
- + 1234.0 SPOT ELEVATION

STORM STRUCTURES

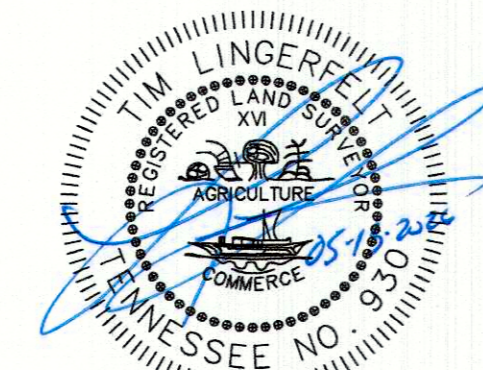
STRUCTURE	TOP	INV IN	INV OUT
DBL CI 1	1567.3		1564.5
DBL CI 2	1567.7	1564.3	1564.2
CB-3	1568.5	1563.6	1563.6
HW-4			1563.4
HW-5			1578.3
MH-6	1585.8	1578.5	1578.3
CB-7	1582.3	1576.5	1576.4
DBL CI 8	1581.2	1574.4	1574.3
DBL CI 9	1581.1	1574.0	1573.9
HW-10			1569.8
HW-11			1565.8
CI-12	1562.0	1558.9	1558.8
CI-13	1562.2	1558.7	1558.6
HW-14			1557.9
BR-20	1555.1	1553.2	1550.0
HW-21			1549.7
BR-22	1557.0	1547.2	1546.2
HW-23			1546.7

SANITARY SEWER STRUCTURES

STRUCTURE	TOP	INV IN	INV IN	INV OUT
EX MH A-1	1568.4	1560.3		1560.2
MH F-5	1568.5	1561.1		1561.0
MH F-4	1574.9	1567.9		1567.7
MH F-3	1583.4	1569.9		1569.8
MH F-2	1584.0	1577.3	1576.8	1572.4
MH F-1	1587.0			1580.5
MH G-1	1592.4	1584.9		1584.8
MH G-2	1588.9	1582.1		1582.0
MH G-3	1582.4	1576.5		1576.4
MH G-4	1558.2	1553.2		1553.1
EX MH-20	1551.8	1543.9		1543.8
MH H-3	1584.7	1572.9		1572.8
MH H-2	1583.3	1573.4		1573.3
MH H-1	1581.7	1573.8		

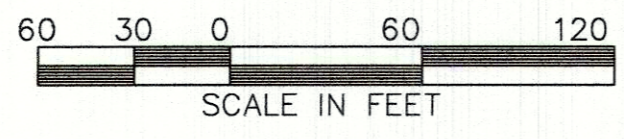
INTEGRITY BUILDING
GROUP, LLC
D.B. 3658, PG. 2591

INTEGRITY BUILDING
GROUP, LLC
D.B. 3658, PG. 2591



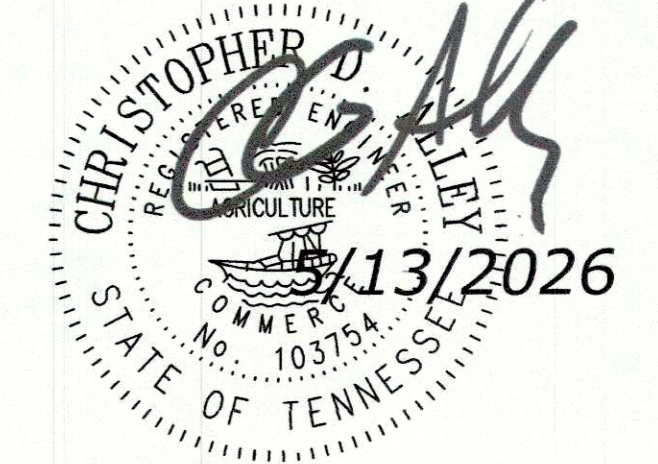
I, TIM LINGERFELT (RLS #930), HEREBY CERTIFY THAT I AM A LAND SURVEYOR REGISTERED IN THE STATE OF TENNESSEE. I HAVE LOCATED ALL VISIBLE, MANMADE WATERLINE, STORMWATER, AND SANITARY SEWER FEATURES SHOWN ON THIS PLAN ON APRIL 27, 2026. I CERTIFY THE LOCATION, ELEVATION AND DESCRIPTION OF THESE FEATURES.

TIM LINGERFELT, PLS
ALLEY & ASSOCIATES, INC.



I, CHRISTOPHER D. ALLEY (TN PE #103754), HEREBY CERTIFY THAT I AM AN ENGINEER LICENSED IN THE STATE OF TENNESSEE. I HAVE REVIEWED THE INFORMATION BASED ON FIELD SURVEY DATA PROVIDED TO ME BY TIM LINGERFELT, A STATE OF TENNESSEE REGISTERED LAND SURVEYOR (TN RLS #930).

BASED ON THE AFOREMENTIONED SURVEY AND TO THE BEST OF MY KNOWLEDGE, INFORMATION, AND BELIEF, THE SANITARY SEWER, WATERLINE, & STORM SEWER IMPROVEMENTS SHOWN ON THIS PLAN FUNCTION AS INTENDED ON THE APPROVED DESIGN FOR THIS DEVELOPMENT.



BY: _____
 DATE: _____
 REVISIONS: _____

STORM, SANITARY SEWER & WATER AS-BUILT
 FIELDCREST ACRES PHASE 2
 KINGSFORT, TENNESSEE

ALLEY & ASSOCIATES, INC.
 SURVEYORS
 422 E. MARKET STREET KINGSFORT, TENNESSEE 37660
 TELEPHONE (423) 392-8896
 E-MAIL: tlingerfelt@alleyassociates.com