

TYPE	YEAR	PROJECT NO.	SHEET NO.
R.O.W.	2019	STP-M-9108(48)	E1
CONST.	2022	STP-M-9108(48)	E1

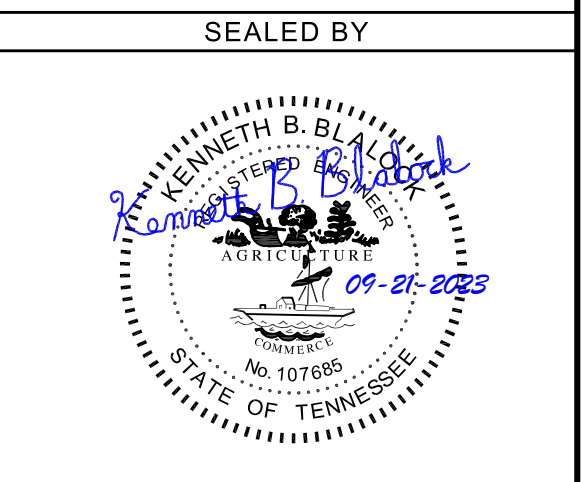
REV. 09/21/23: REVISED NOTE 10 TO INCLUDE UPDATED UTILITIES.

ELECTRICAL LEGEND		
SYMBOL	DESCRIPTION	MOUNTING HEIGHT
-----	UNDERGROUND STREET POWER, LIGHTING, AND FIBER SERVICE	----
— P (UG) —	PROPOSED UNDERGROUND POWER SERVICE	----
— C (UG) —	PROPOSED UNDERGROUND UTILITY SERVICE	----
— P —	PROPOSED OVERHEAD POWER SERVICE	----
- - - - -	PROPOSED CENTER LINE OF UTILITY DUCT BANK	----
⊗	STREET LIGHT - FIXTURES AND POLES PROVIDED AND INSTALLED BY OTHERS	----
○	POWER POLE (WOOD) PROVIDED AND INSTALLED BY OTHERS OR EXISTING	----
[PB]	PULL BOX - SEE DETAIL 3 SHEET E14	----
□	PROPOSED UTILITY HAND HOLE	----
□	PROPOSED PEDESTAL LOCATION - PROVIDED AND INSTALLED BY CONTRACTOR	----

GENERAL NOTES:

- LEGEND ITEMS SHOWN ARE FOR REFERENCE ONLY AND MAY OR MAY NOT BE INCLUDED IN PROJECT.
- EXISTING UTILITIES - NUMEROUS UNDERGROUND UTILITIES EXIST INCLUDING MAJOR CONCRETE CULVERTS. CONTRACTOR SHALL COORDINATE WITH ALL UTILITY COMPANIES. VERIFY EXISTING UTILITIES AND CULVERT PRIOR TO COMMENCEMENT OF WORK. THE DRAWINGS IDENTIFY AND/OR PROVIDE DIRECTIONS FOR RELOCATING OR COORDINATING WITH THESE UTILITIES. COORDINATE WITH AEP AND OTHER PROVIDERS. AEP WILL REMOVE/RELOCATE OVERHEAD ELECTRIC POWER. CONTRACTOR SHALL BEAR COSTS FOR DAMAGE TO ANY EXISTING UTILITIES.
- CONTRACTOR SHALL VISIT THE SITE, VERIFY EXISTING CONDITIONS AND BECOME FAMILIAR WITH INTENDED WORK INVOLVED.
- CONTACT SERVICING UTILITY COMPANIES AND CONFIRM REQUIREMENTS, SECURE AND PAY FOR ALL FEES AND PERMITS.
- CONFORM TO ALL LOCAL, STATE AND NATIONAL CODES, THE UTILITY CO., AND REQUIREMENTS OF AUTHORITIES HAVING JURISDICTION.
- DO NOT SCALE DRAWINGS.
- ALL CONDUIT(S) AND POWER FEEDER(S) FOR SIGNALIZATION EQUIPMENT IS PROVIDED BY OTHERS, SEE SIGNALIZATION PLANS FOR COORDINATION.
- EXISTING LIGHTING POLES, POLE LIGHTING FIXTURES, AND OVERHEAD SECONDARY SHALL BE DEMOLISHED BY OTHERS.
- ALL PROPOSED CONDUIT(S) ARE SHOWN DIAGRAMMATICALLY ONLY, CONTRACTOR TO COORDINATE EXACT CONDUIT ROUTING WITH EXISTING, PROPOSED UTILITIES AND PROPOSED TREE, REFER TO LANDSCAPE PLANS.
- ALL NEW TRENCHING AND UTILITY CONDUITS REQUIRE AEP, SEGRA, CHARTER, BRIGHTSPEED AND LUMEN INSPECTIONS AND APPROVALS PRIOR TO COVERING. CONTRACTOR SHALL COORDINATE WITH EACH COMPANY AS NECESSARY. DO NOT COVER WITHOUT CONTACTING EACH UTILITY COMPANY AND OBTAINING APPROVAL.
- ALL FIXTURES, POLES AND WIRING PROVIDED BY OTHERS.
- ALL CONDUIT SIZE FOR STREET LIGHTING SHALL BE 2" UNLESS OTHERWISE NOTED.
- NO CONDUIT SHALL BE INSTALLED WITH MORE THAN THREE 90 DEGREE ELBOWS.
- ALL LOCATIONS NEED TO BE FIELD VERIFIED WITH THE AEP TECHNICIAN PRIOR TO INSTALLATION.
- AEP TO SUPPLY ALL STAND-OFFS FOR POLE MOUNTED CONDUITS.
- ALL NEW PEDESTALS SHALL BE SUPPLIED AND INSTALLED BY THE CONTRACTOR.
- FOR COMMUNICATIONS CONDUITS, ALL SWEEPS TO BE 36" RADIUS, 90 DEG FOR TERMINATION TO AT POLES AND PEDESTALS. 22.5 DEG FOR TERMINATION TO HANDHOLES. PROVIDE A 5/8"X8' GROUND ROD WITH CLAMP AND 5' OF #6 BARE COPPER WIRE.
- LIGHTING AND FIXTURE POLE SPECIFICATIONS AND CORRESPONDING PHOTOMETRIC CALCULATIONS ARE PROVIDED BY OTHERS.

ELECTRICAL ABBREVIATIONS	
SYMBOL	DESCRIPTION
AFG	ABOVE FINISHED GRADE
AFF	ABOVE FINISHED FLOOR
BKR	BREAKER
CKT	CIRCUIT
FBO	FURNISHED BY OTHERS
FBC	FURNISHED BY CONTRACTOR
FU	FUSED
GFI	GROUND FAULT INTERRUPTER
GRD/GND	GROUND
IG	ISOLATED GROUND
AEP	AMERICAN ELECTRIC POWER COMPANY INC.
MTD	MOUNTED
NFU	NON-FUSED
NIC	NOT IN CONTRACT
NTS	NOT TO SCALE
O.C.	ON CENTER
PNLBD	PANELBOARD
RT	RAIN TIGHT
SS	SURGE SUPPRESSION DEVICE
SW	SWITCH
TYP	TYPICAL
UON	UNLESS OTHERWISE NOTED
UPS	UNINTERRUPTIBLE POWER SUPPLY
WP	WEATHERPROOF
VIF	VERIFY IN FIELD
XFMR	TRANSFORMER



COORDINATES ARE NAD/83(1995), ARE DATUM ADJUSTED BY THE FACTOR OF 1.000030 AND TIED TO THE TGRN. ALL ELEVATIONS ARE REFERENCED TO THE NAVD 1988.

**CITY OF KINGSPORT
SULLIVAN COUNTY, TN**

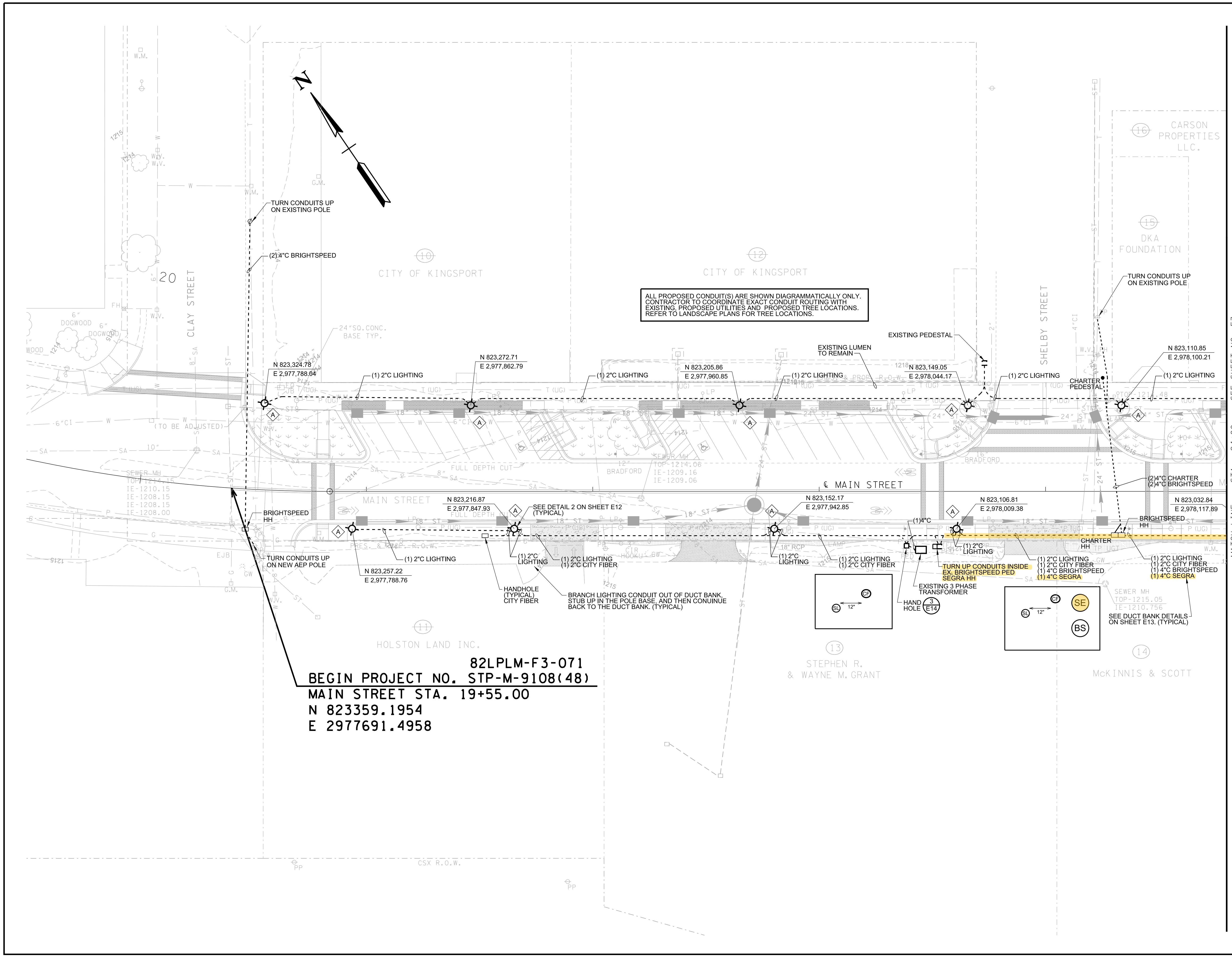
**MAIN STREET
KINGSPORT REBUILD
AND STREETScape**

**ELECTRICAL GENERAL
NOTES, LEGEND AND
SCHEDULES**



TYPE	YEAR	PROJECT NO.	SHEET NO.
R.O.W.	2019	STP-M-9108(48)	E2
CONST.	2022	STP-M-9108(48)	E2

REV. 09/21/23: UPDATED UTILITY LAYOUT PER UTILITY REQUIREMENTS.



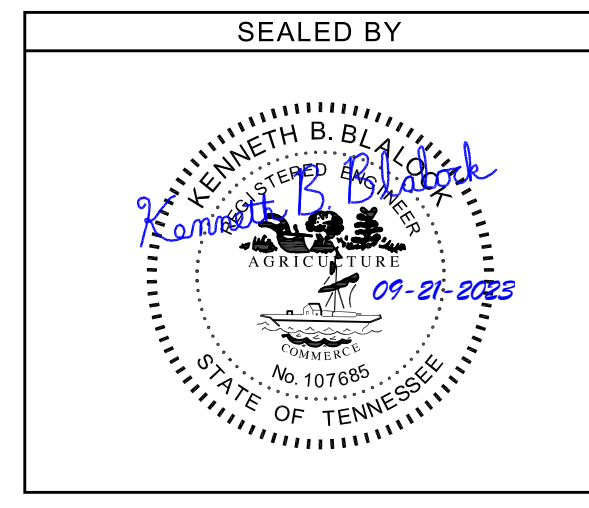
ALL PROPOSED CONDUIT(S) ARE SHOWN DIAGRAMMATICALLY ONLY. CONTRACTOR TO COORDINATE EXACT CONDUIT ROUTING WITH EXISTING, PROPOSED UTILITIES AND PROPOSED TREE LOCATIONS. REFER TO LANDSCAPE PLANS FOR TREE LOCATIONS.

MATCH LINE STA. 24+80 SEE SHEET NO. E3

- NOTES:
- SEE SHEET E1 FOR GENERAL NOTES AND LEGEND.
 - LIGHTING AND FIXTURE POLE SPECIFICATIONS AND CORRESPONDING PHOTOMETRIC CALCULATIONS ARE PROVIDED BY OTHERS.
 - STREET LIGHTING 2'-6" MIN. DEPTH; OTHER COMM 2' MIN. DEPTH.

- DUCT BANK ABBREVIATIONS
- AE - AEP FIBER
 - BS - BRIGHTSPEED
 - CF - CITY FIBER
 - CH - CHARTER
 - LU - LUMEN
 - SE - SEGRA
 - SL - STREET LIGHTING

82LPLM-F3-071
BEGIN PROJECT NO. STP-M-9108(48)
MAIN STREET STA. 19+55.00
N 823359.1954
E 2977691.4958



COORDINATES ARE NAD/83(1995), ARE DATUM ADJUSTED BY THE FACTOR OF 1.000030 AND TIED TO THE TGRN. ALL ELEVATIONS ARE REFERENCED TO THE NAVD 1988.

CITY OF KINGSPORT
SULLIVAN COUNTY, TN

MAIN STREET
KINGSPORT REBUILD
AND STREETScape

SITE
ELECTRICAL
PLAN

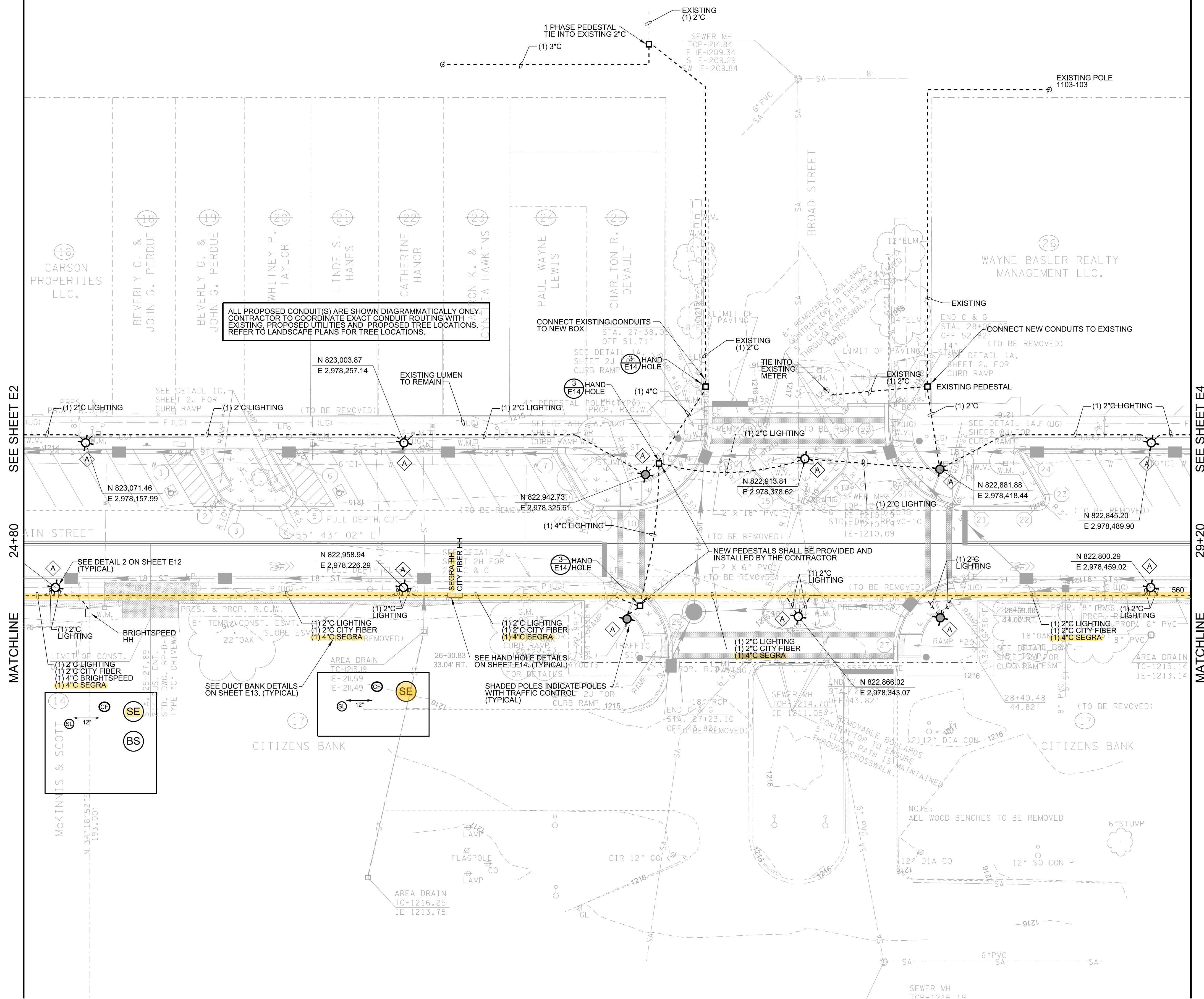
STA. 19+55 TO STA. 24+80
 SCALE: 1" = 20'



9/21/2023 F:\3645500\04_CAD+ELEC\101\3645500_E2.dgn

TYPE	YEAR	PROJECT NO.	SHEET NO.
R.O.W.	2019	STP-M-9108(48)	E3
CONST.	2022	STP-M-9108(48)	E3

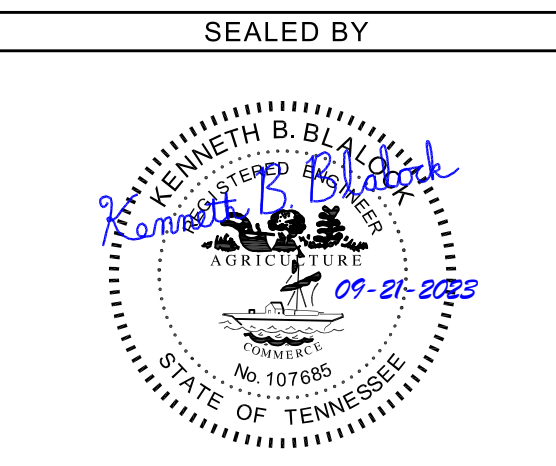
REV. 09/21/23: UPDATED UTILITY LAYOUT PER UTILITY REQUIREMENTS.



ALL PROPOSED CONDUITS ARE SHOWN DIAGRAMMATICALLY ONLY. CONTRACTOR TO COORDINATE EXACT CONDUIT ROUTING WITH EXISTING, PROPOSED UTILITIES AND PROPOSED TREE LOCATIONS. REFER TO LANDSCAPE PLANS FOR TREE LOCATIONS.

- NOTES:
- SEE SHEET E1 FOR GENERAL NOTES AND LEGEND.
 - LIGHTING AND FIXTURE POLE SPECIFICATIONS AND CORRESPONDING PHOTOMETRIC CALCULATIONS ARE PROVIDED BY OTHERS.
 - STREET LIGHTING 2'-6" MIN. DEPTH; OTHER COMM 2' MIN. DEPTH.

- DUCT BANK ABBREVIATIONS
- AE - AEP FIBER
 - BS - BRIGHTSPEED
 - CF - CITY FIBER
 - CH - CHARTER
 - LU - LUMEN
 - SE - SEGRA
 - SL - STREET LIGHTING



COORDINATES ARE NAD/83(1995), ARE DATUM ADJUSTED BY THE FACTOR OF 1.000030 AND TIED TO THE TGRN. ALL ELEVATIONS ARE REFERENCED TO THE NAVD 1988.

CITY OF KINGSPORT
SULLIVAN COUNTY, TN

MAIN STREET
KINGSPORT REBUILD
AND STREETSCAPE

SITE
ELECTRICAL
PLAN

STA. 24+80 TO STA. 29+20
SCALE: 1"= 20'



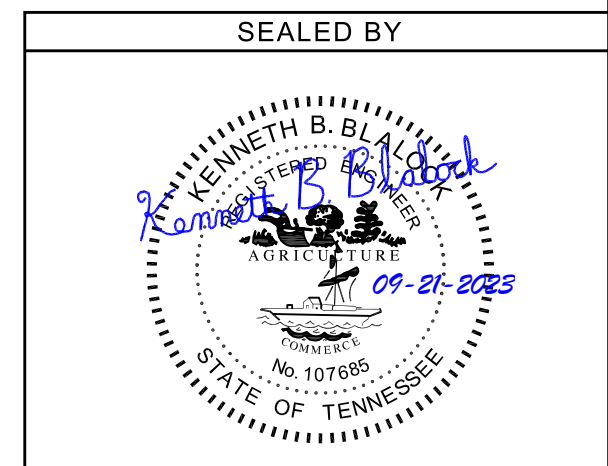
TYPE	YEAR	PROJECT NO.	SHEET NO.
R.O.W.	2019	STP-M-9108(48)	E4
CONST.	2022	STP-M-9108(48)	E4

REV. 09/21/23: UPDATED UTILITY LAYOUT PER UTILITY REQUIREMENTS.

ALL PROPOSED CONDUIT(S) ARE SHOWN DIAGRAMMATICALLY ONLY. CONTRACTOR TO COORDINATE EXACT CONDUIT ROUTING WITH EXISTING, PROPOSED UTILITIES AND PROPOSED TREE LOCATIONS. REFER TO LANDSCAPE PLANS FOR TREE LOCATIONS.

- NOTES:
- SEE SHEET E1 FOR GENERAL NOTES AND LEGEND.
 - LIGHTING AND FIXTURE POLE SPECIFICATIONS AND CORRESPONDING PHOTOMETRIC CALCULATIONS ARE PROVIDED BY OTHERS.
 - STREET LIGHTING 2'-6" MIN. DEPTH; OTHER COMM 2' MIN. DEPTH.

- DUCT BANK ABBREVIATIONS
- AE - AEP FIBER
 - BS - BRIGHTSPEED
 - CF - CITY FIBER
 - CH - CHARTER
 - LU - LUMEN
 - SE - SEGRA
 - SL - STREET LIGHTING



COORDINATES ARE NAD/83(1995), ARE DATUM ADJUSTED BY THE FACTOR OF 1.000030 AND TIED TO THE TGRN. ALL ELEVATIONS ARE REFERENCED TO THE NAVD 1988.

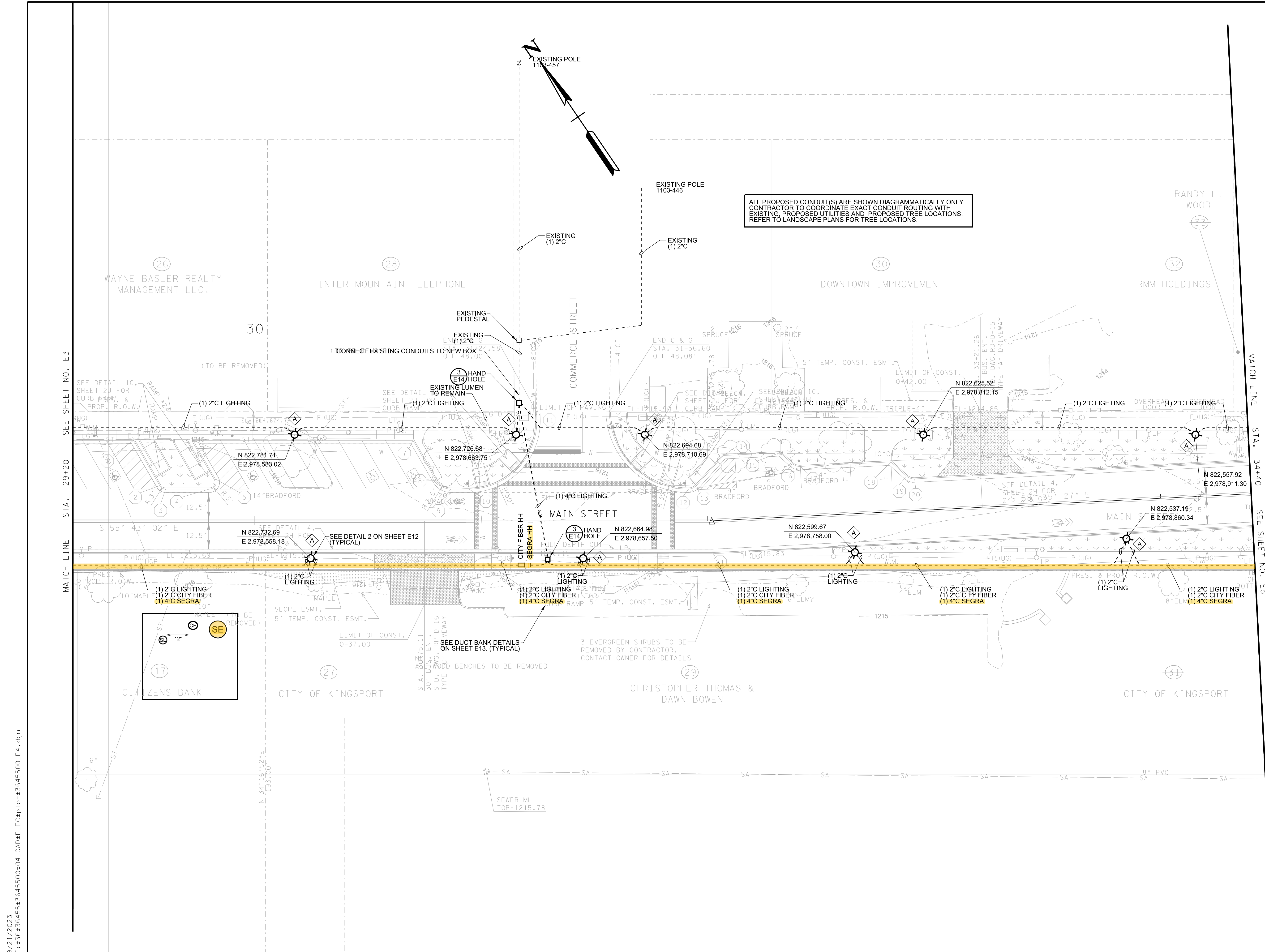
CITY OF KINGSPORT
SULLIVAN COUNTY, TN

MAIN STREET
KINGSPORT REBUILD
AND STREETScape

SITE
ELECTRICAL
PLAN

STA. 29+20 TO STA. 34+40

SCALE: 1"= 20'



9/21/2023
F:\36\36455\04_CAD+ELEC\101\3645500_E4.dgn

TYPE	YEAR	PROJECT NO.	SHEET NO.
R.O.W.	2019	STP-M-9108(48)	E5
CONST.	2022	STP-M-9108(48)	E5

REV. 07/24/23: REVISED SITE LIGHTING FIXTURE TO ACCOMMODATE NEW DRIVEWAY LOCATION.

REV. 09/21/23: UPDATED UTILITY LAYOUT PER UTILITY REQUIREMENTS.

REV. 09/28/23: REVISED LIGHT POLE FOUNDATION COORDINATES AT SE CORNER OF CHEROKEE AND MAIN. CORRECTED CONDUIT REFERENCE FOR AEP POWER AT STA. 37+50. IDENTIFIED WORK TO BE PERFORMED BY OTHERS BEHIND BUILDING FOR TRACT NO. 36. MODIFY AEP FIBER TERMINUS AT POLE AT STA. 37+50.

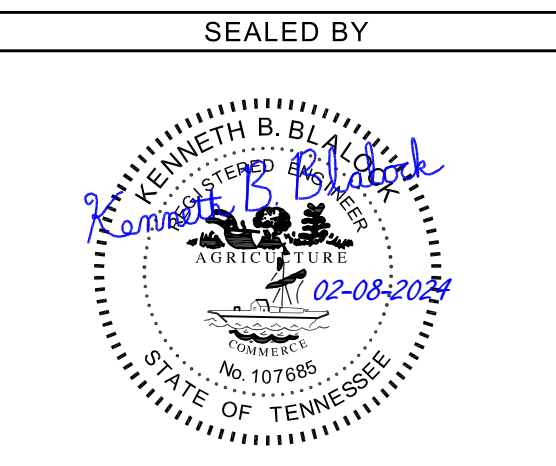
REV. 02/06/24: CHANGED CITY FIBER CONDUIT SIZE FROM 4" TO 2".

NOTES:

- SEE SHEET E1 FOR GENERAL NOTES AND LEGEND.
- LIGHTING AND FIXTURE POLE SPECIFICATIONS AND CORRESPONDING PHOTOMETRIC CALCULATIONS ARE PROVIDED BY OTHERS.
- STREET LIGHTING 2'-6" MIN. DEPTH; OTHER COMM 2' MIN. DEPTH.

DUCT BANK ABBREVIATIONS

- AE - AEP FIBER
- BS - BRIGHTSPEED
- CF - CITY FIBER
- CH - CHARTER
- LU - LUMEN
- SE - SEGRA
- SL - STREET LIGHTING



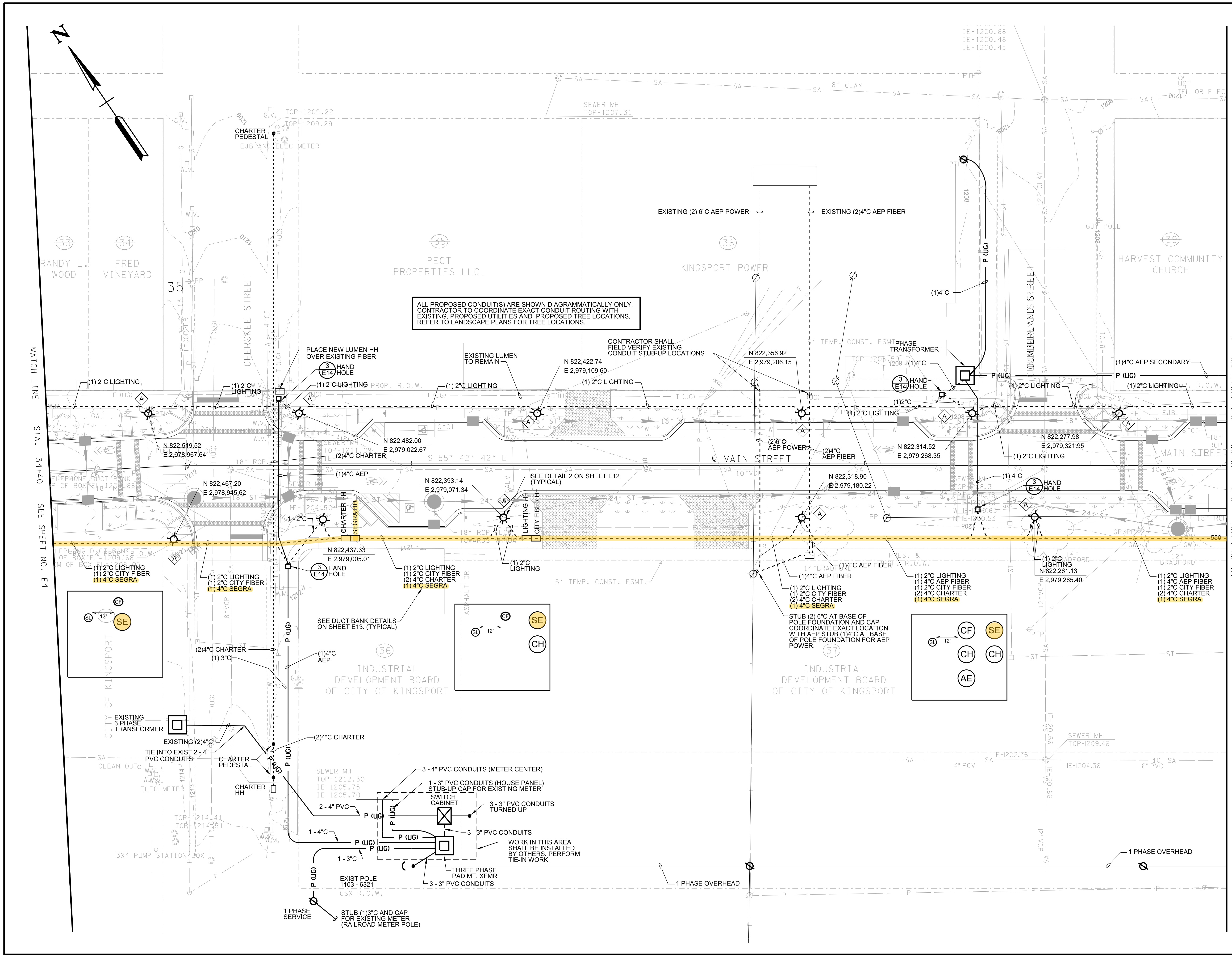
COORDINATES ARE NAD/83(1995), ARE DATUM ADJUSTED BY THE FACTOR OF 1.000030 AND TIED TO THE TGRN. ALL ELEVATIONS ARE REFERENCED TO THE NAVD 1988.

**CITY OF KINGSPORT
SULLIVAN COUNTY, TN**

**MAIN STREET
KINGSPORT REBUILD
AND STREETScape**

**SITE
ELECTRICAL
PLAN**

STA. 34+40 TO STA. 39+60
SCALE: 1" = 20"



ALL PROPOSED CONDUIT(S) ARE SHOWN DIAGRAMMATICALLY ONLY. CONTRACTOR TO COORDINATE EXACT CONDUIT ROUTING WITH EXISTING, PROPOSED UTILITIES AND PROPOSED TREE LOCATIONS. REFER TO LANDSCAPE PLANS FOR TREE LOCATIONS.

CONTRACTOR SHALL FIELD VERIFY EXISTING CONDUIT STUB-UP LOCATIONS

PLACE NEW LUMEN HH OVER EXISTING FIBER

EXISTING LUMEN TO REMAIN

SEE DETAIL 2 ON SHEET E12 (TYPICAL)

SEE DUCT BANK DETAILS ON SHEET E13. (TYPICAL)

STUB (2) 6" AT BASE OF POLE FOUNDATION AND CAP COORDINATE EXACT LOCATION WITH AEP STUB (1) 4" AT BASE OF POLE FOUNDATION FOR AEP POWER.

WORK IN THIS AREA SHALL BE INSTALLED BY OTHERS. PERFORM TIE-IN WORK.

2/7/2024 F:\3645500+04_CAD+ELEC\101+3645500_E5.dgn

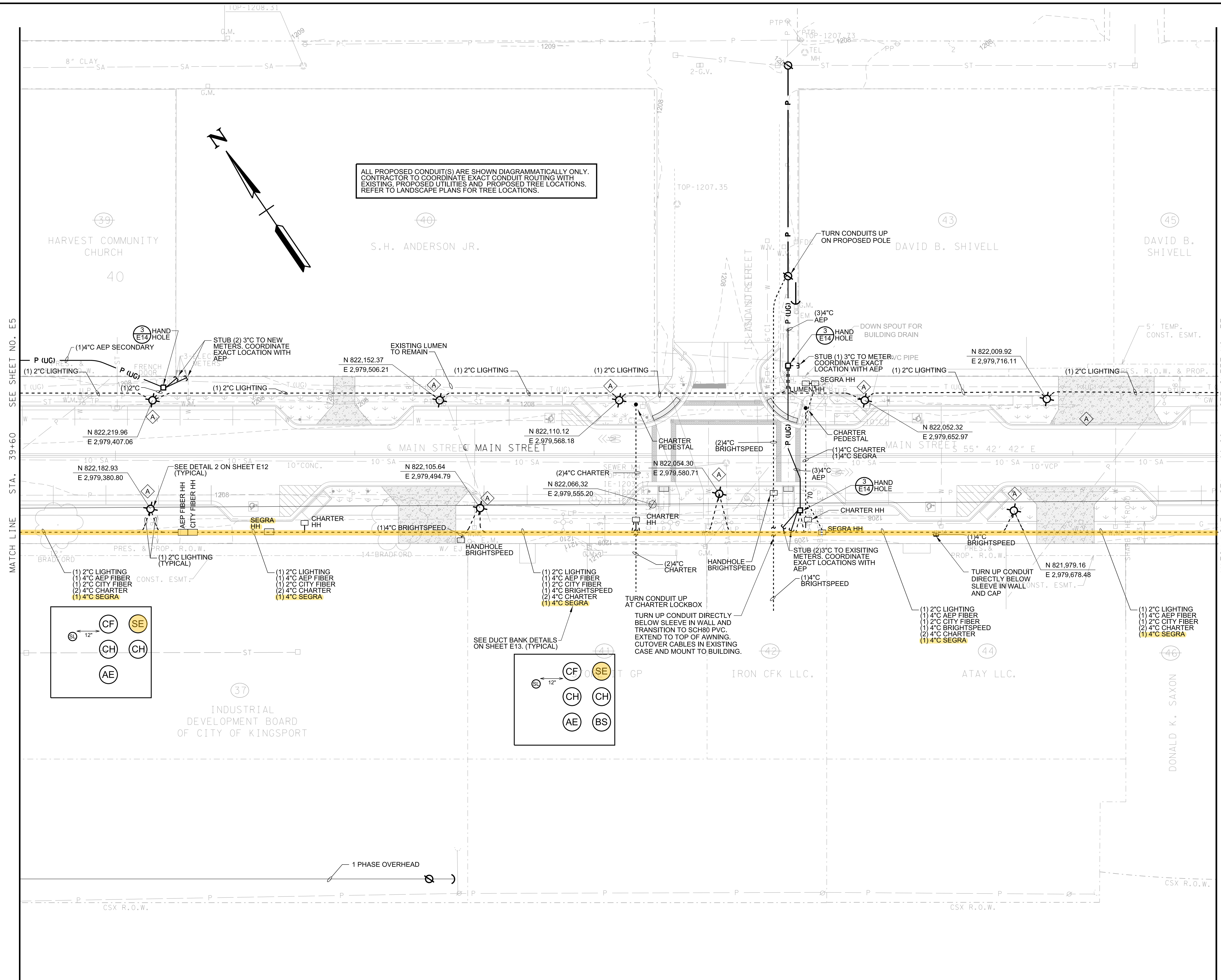
MATCH LINE STA. 34+40 SEE SHEET NO. E4

MATCH LINE STA. 39+60 SEE SHEET NO. E6

TYPE	YEAR	PROJECT NO.	SHEET NO.
R.O.W.	2019	STP-M-9108(48)	E6
CONST.	2022	STP-M-9108(48)	E6

REV. 07/24/23: REVISED SITE LIGHTING FIXTURE TO ACCOMMODATE NEW DRIVEWAY LOCATION.
 REV. 09/21/23: UPDATED UTILITY LAYOUT PER UTILITY REQUIREMENTS.
 REV. 02/06/24: UPDATED UTILITY LAYOUT AT ISLAND STREET PER SEGRA REQUEST. CHANGED CITY FIBER CONDUIT SIZE FROM 4" TO 2".

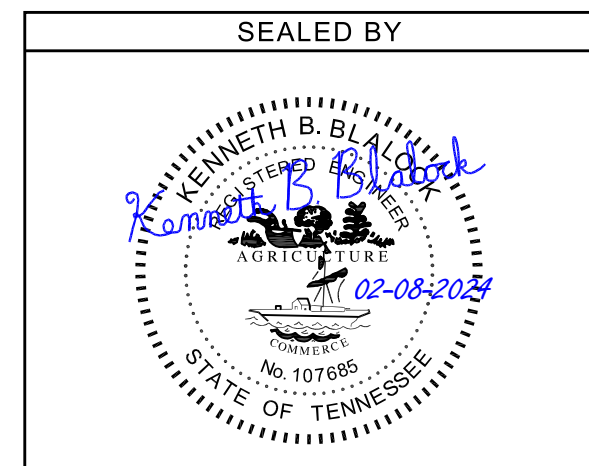
ALL PROPOSED CONDUIT(S) ARE SHOWN DIAGRAMMATICALLY ONLY. CONTRACTOR TO COORDINATE EXACT CONDUIT ROUTING WITH EXISTING, PROPOSED UTILITIES AND PROPOSED TREE LOCATIONS. REFER TO LANDSCAPE PLANS FOR TREE LOCATIONS.



- NOTES:
- SEE SHEET E1 FOR GENERAL NOTES AND LEGEND.
 - LIGHTING AND FIXTURE POLE SPECIFICATIONS AND CORRESPONDING PHOTOMETRIC CALCULATIONS ARE PROVIDED BY OTHERS.
 - STREET LIGHTING 2'-6" MIN. DEPTH; OTHER COMM 2' MIN. DEPTH.

DUCT BANK ABBREVIATIONS

- AE - AEP FIBER
- BS - BRIGHTSPEED
- CF - CITY FIBER
- CH - CHARTER
- LU - LUMEN
- SE - SEGRA
- SL - STREET LIGHTING



COORDINATES ARE NAD/83(1995), ARE DATUM ADJUSTED BY THE FACTOR OF 1.000030 AND TIED TO THE TGRN. ALL ELEVATIONS ARE REFERENCED TO THE NAVD 1988.

CITY OF KINGSPORT
SULLIVAN COUNTY, TN

MAIN STREET
KINGSPORT REBUILD
AND STREETSCAPE

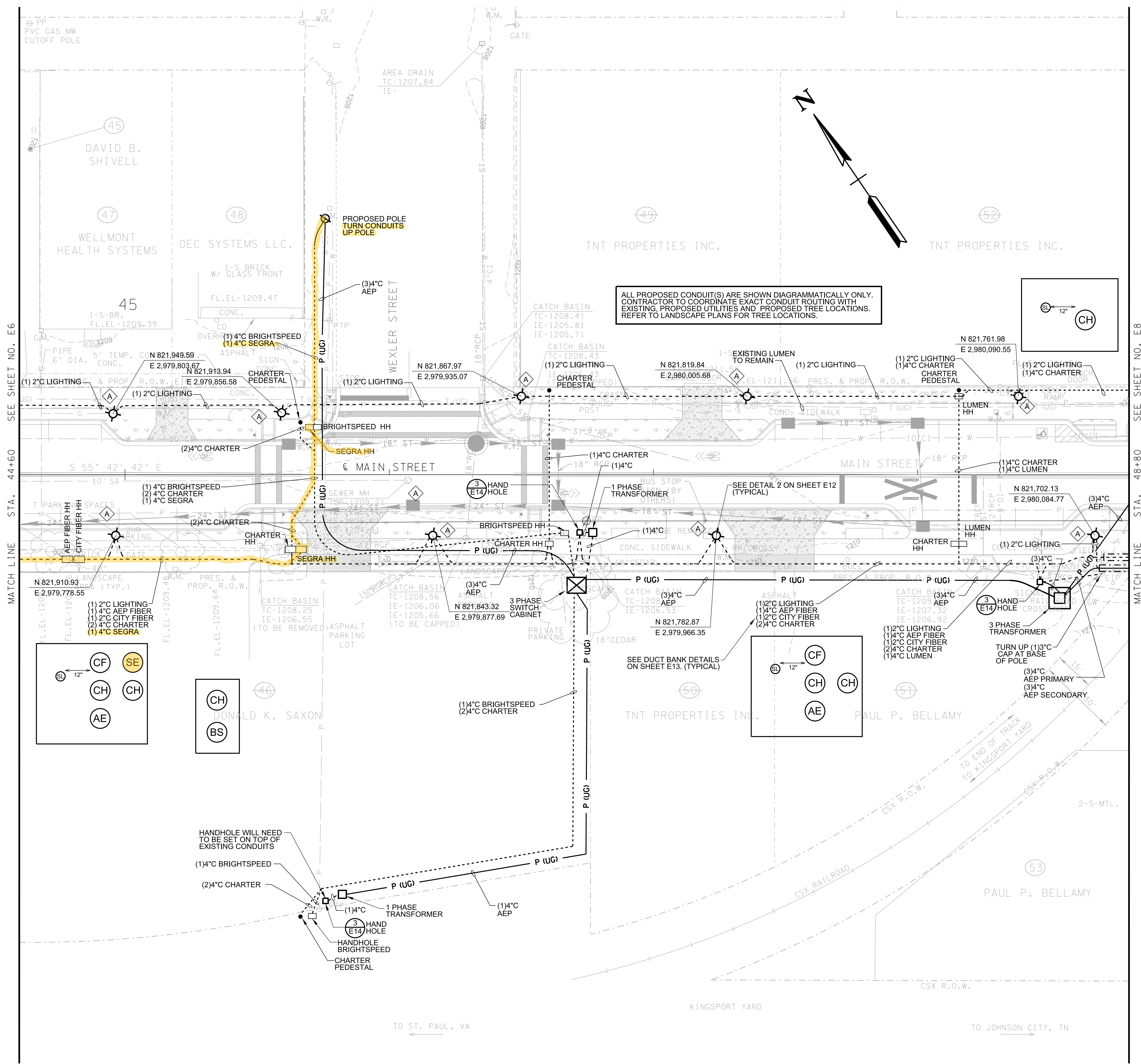
SITE
ELECTRICAL
PLAN

STA. 39+60 TO STA. 44+60
SCALE: 1' = 20"



TYPE	YEAR	PROJECT NO.	SHEET NO.
R.O.W.	2019	STP-M-9108(48)	E7
CONST.	2022	STP-M-9108(48)	E7

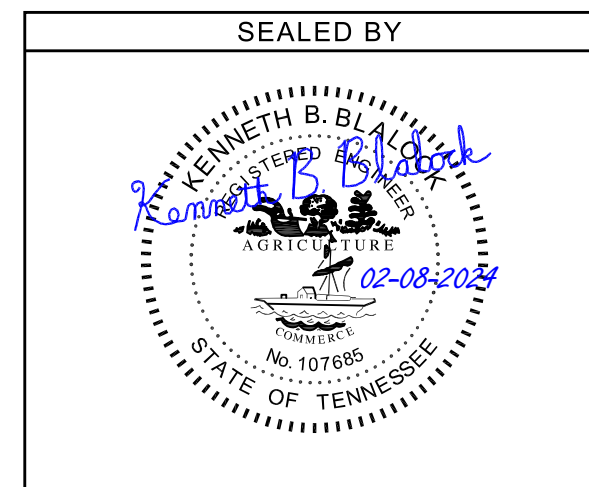
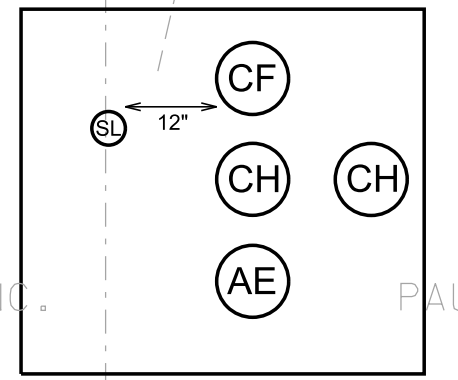
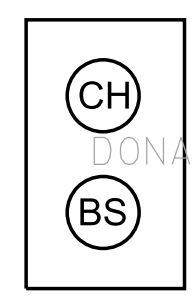
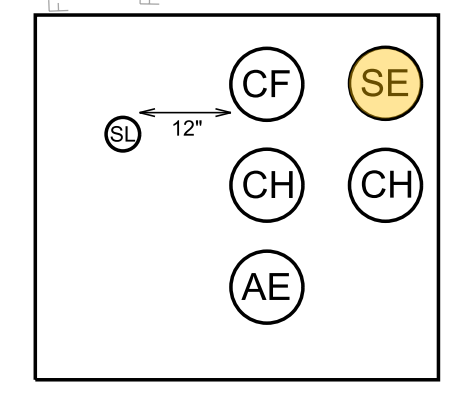
REV. 09/21/23: UPDATED UTILITY LAYOUT PER UTILITY REQUIREMENTS.
 REV. 02/06/24: CHANGED CITY FIBER CONDUIT SIZE FROM 4" TO 2".



ALL PROPOSED CONDUIT(S) ARE SHOWN DIAGRAMMATICALLY ONLY. CONTRACTOR TO COORDINATE EXACT CONDUIT ROUTING WITH EXISTING, PROPOSED UTILITIES AND PROPOSED TREE LOCATIONS. REFER TO LANDSCAPE PLANS FOR TREE LOCATIONS.

- NOTES:
- SEE SHEET E1 FOR GENERAL NOTES AND LEGEND.
 - LIGHTING AND FIXTURE POLE SPECIFICATIONS AND CORRESPONDING PHOTOMETRIC CALCULATIONS ARE PROVIDED BY OTHERS.
 - STREET LIGHTING 2'-6" MIN. DEPTH; OTHER COMM 2' MIN. DEPTH.

- DUCT BANK ABBREVIATIONS
- AE - AEP FIBER
 - BS - BRIGHTSPEED
 - CF - CITY FIBER
 - CH - CHARTER
 - LU - LUMEN
 - SE - SEGRA
 - SL - STREET LIGHTING



COORDINATES ARE NAD/83(1995), ARE DATUM ADJUSTED BY THE FACTOR OF 1.000030 AND TIED TO THE TGRN. ALL ELEVATIONS ARE REFERENCED TO THE NAVD 1988.

CITY OF KINGSPORT
SULLIVAN COUNTY, TN

MAIN STREET
KINGSPORT REBUILD
AND STREETSCAPE

SITE
ELECTRICAL
PLAN

STA. 44+60 TO STA. 48+80
SCALE: 1" = 20"

