

FAMILY OWNED. AMERICAN MADE.



RESILITE
The Mat Company

CLASSIC MAT

RSP600
RSP625

Athletes, coaches, and officials prefer the look, feel, and comfort of the Classic Mat.



SUPERIOR DURABILITY

Made from closed-cell rubber nitrile foam core, the longest lasting foam available.

With two complete wrestling surfaces, the life of your mat is doubled.

LONG-TERM INVESTMENT

Coated on all sides with our exclusive #457 poly-vinyl paint.

The easiest to clean and disinfect.

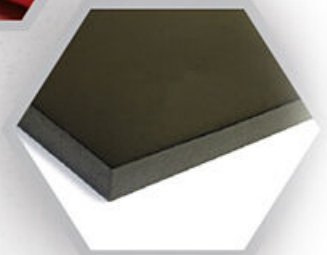
Reconditioning available for extended use.

Available in 16 standard Resilite vinyl-coating colors.

OUTSTANDING PROTECTION

One of the most shock-absorbing foams for its thickness.

Meets or exceeds the ASTM 355 impact test.



The Official Mat Supplier to the
NCAA® Wrestling Championships

RESILITE
The Mat Company

www.resilite.com | 1.800.843.6287

Resilite Independent Sales Pro.

200 Point Township Drive
 Northumberland, PA 17857
 United States

T: 1-800-843-6287
 F: 570-473-8988

| | |
|-------------------------------|----------------------|
| Quote # | 53896 v2 |
| Date | 11-08-2024 |
| Price Firm For 30-Days | 12-08-2024 |
| Contact | Bud Hennebual |

Prepared for Dobyms-Bennett High School
 Wesley Idlette
 1 Tribe Way
 Kingsport, TN 37664
 United States


T: 423-903-0520
 E: widlette@k12k.com

Classic Mat

| Item | Sqft/Qty | Price | Total |
|--|----------|--------|--------------------|
| Classic RSP-625 | 5774.1 | \$9.12 | \$52,659.79 |
| 1.25" Thick / Meets ASTM F355 Shock Absorbency / Includes: Straps, Tubes and 3-year Warranty | | | |
| Estimated Lead Time: 32-36 weeks | | | |
| Resilite (Code: RSP-625) | | | |
| Base Price | | \$8.50 | \$49,079.85 |
| <u>How Many Sections</u> : Many see layout (Seven) | | | |
| <u>Base Color of the Mat</u> : Light Gray (Painted Light Gray) | | | |
| <u>Bottom Side Base Color of the Mat</u> : Light Gray (Painted Light Gray) | | | |
| <u>Mat Shipping and Handling</u> : TN-Resilite Truck (RT-TN) | | \$0.62 | \$3,579.94 |
| <u>Mat Size</u> : 42x42 (X2) Plus filler sections | | | |
| <u>Layout Information</u> : Large Wrestling Room | | | |
| Practice Circles with Competition Lines | 1 | \$0.00 | \$0.00 |
| Resilite (Code: MRKG005) | | | |
| <u>Practice Circle Line Color</u> : White (Painted White) | | | |
| <u>Wrestling Competition Circle Line Color</u> : Maroon (Paint Maroon) | | | |
| <u>Competition Circle Size</u> : 32' (NCAA & NFHS Regulation) | | | |

| Item | Sqft/Qty | Price | Total |
|--|----------|------------|-------------------|
| Floor Installation Cut In Mats after they reduce down to size | 1 | \$1,250.00 | \$1,250.00 |
| <ul style="list-style-type: none"> • Resilite Wall installation does not include the removal or disposal of existing wall padding. • The area for installation must be clear of any debris or equipment, and the area must not be in use. • The Installation quote is based upon a workday of 7:30 am to 6 pm. • When Resilite is asked to quote installation when Prevailing Wage is involved, The Prevailing Wage Schedule must be sent or included with the project scope at the time of the quote request. If a Prevailing Wage Schedule is not included, the project will be quoted based on Resilite’s standard installation price. • When Resilite is asked to quote installation based solely upon preliminary drawings, sketches, dimensions, or other information about the project that has not been finalized, Resilite may, at Resilite’s discretion, provide a secondary, revised installation quote or price if the specific contract information, deadline, sketches, drawings, dimensions, materials, or scope of the project have changed from what was initially provided to Resilite at the time and date of the initial quote. | | | |

Resilite (Code: Installation)

 [Resilite_Installation_Disclaimer.pdf](#) (107 KB)

Prevailing wage : No

Removal of Current Wall Padding: No

Wall Material?: Concrete Floor


Height to Hang Wall Padding off the Floor?: On Floor

Please contact us if you have any questions.

Cost Breakdown

| Type | One-Time Fees |
|-------------------------------|------------------------|
| Coated Division / Classic Mat | \$52,659.79 |
| Art / Coated | — |
| Service | \$1,250.00 |
| Total | \$53,909.79 USD |

Quote Attachments

 [W9_2024.pdf](#) (125 KB)

Shipping Destination:: School

Purchasing Cooperative?: Buy Board Contract 665-22

Mat Cleaners and Accessories

| | | | |
|-------------------------------|--|-------------------------------|------------------------------------|
| Shop Mat Tape | Shop Mat Cleaning Supplies | Shop ShotSled | Shop Resi-Wheelers |
|-------------------------------|--|-------------------------------|------------------------------------|

Resilite Shipping

Resilite does not provide inside delivery. All quotes are curbside delivery unless otherwise noted on the quote.

Resilite Classic Mat Disclaimer

Resilite Classic Mats will be designed and manufactured as close as possible to the specifications and dimensions that were provided to Resilite at the time this layout was produced. Because of the characteristics of Classic Mats, Resilite will manufacture the mat or mat sections with 4% - 5% of oversize. This oversize is based on many factors and is required because of the Classic Mat manufacturing process and shrinkage. Resilite Classic Mats CAN NOT and WILL NOT be manufactured to exact and precise measurements. Classic Mats will continue to shrink and require 8 to 12 months before the full curing process is complete.

Possible Shrinkage - Plan Accordingly

All foam wrestling mats are subject to expansion and contraction due to environmental and physical conditions. Vinyl-coated mats are subject to shrinkage. Therefore, mats are oversized to compensate for this shrinkage. Resilite guarantees the mats to be within a +/- 4% tolerance.

CURING: Resilite Classic Mats WILL NEED TO BE CURED for no less than two (2) weeks.

NOTE: Mats should be unrolled and laid flat for seven (7) days on each side.

DO NOT leave a new mat or newly reconditioned mat rolled for an extended period of time.

Classic Mat Warranty

New Mats:

3-Year Limited Warranty on New Vinyl-Coated Mats

Reconditioned Mats:

1-Year Limited Warranty on Factory-Reconditioned Vinyl-Coated Mats

Contact us or reference the Care and Handling Instructions booklet for more information.

**** PLEASE NOTE: This Quote is a firm estimate based on the information and specifications that were provided at the time of this quote.**

IMPORTANT: All Resilite Mats are custom manufactured for each order. Since these are customized products in size, color, and markings; **Resilite requires that any private entity or organization must submit pre-payment BEFORE the order will be started.** Pre-payment terms may be worked out and agreed upon prior to placing the order. If pre-payment terms are agreed upon, the initial deposit amount will be considered approval to begin production and will be deemed NON-REFUNDABLE, if the order is canceled or not paid in full. However, All pre-payment terms will include payment in full (100% of total order including delivery) BEFORE the mats will be shipped or delivered. Resilite will not produce or fulfill orders that have not been paid in Full.

Once Resilite receives an approved School Purchase Order or Private Entity Pre-payment, an Order Acknowledgement will be emailed to you. Orders will be placed on HOLD and Production will not begin until a signed Order Acknowledgement is received at Resilite. All payments should be made payable to Resilite Sports Products, Inc.

Mail to Resilite Sports Products, Inc. Resilite Sports Products / 200 Point Township Drive / Northumberland PA 17857