

INDEX OF SHEETS

SHEET	DESCRIPTION
0	COVER
1	LANDSCAPE PLAN (SITE 1)
2	LANDSCAPE PLAN (SITE 2)
3	LANDSCAPE PLAN (SITE 3)
4	LANDSCAPE PLAN (SITE 4)
5	LANDSCAPE PLAN (SITE 5)
6	LANDSCAPE PLAN (SITE 6)

CITY OF KINGSPORT

SULLIVAN COUNTY

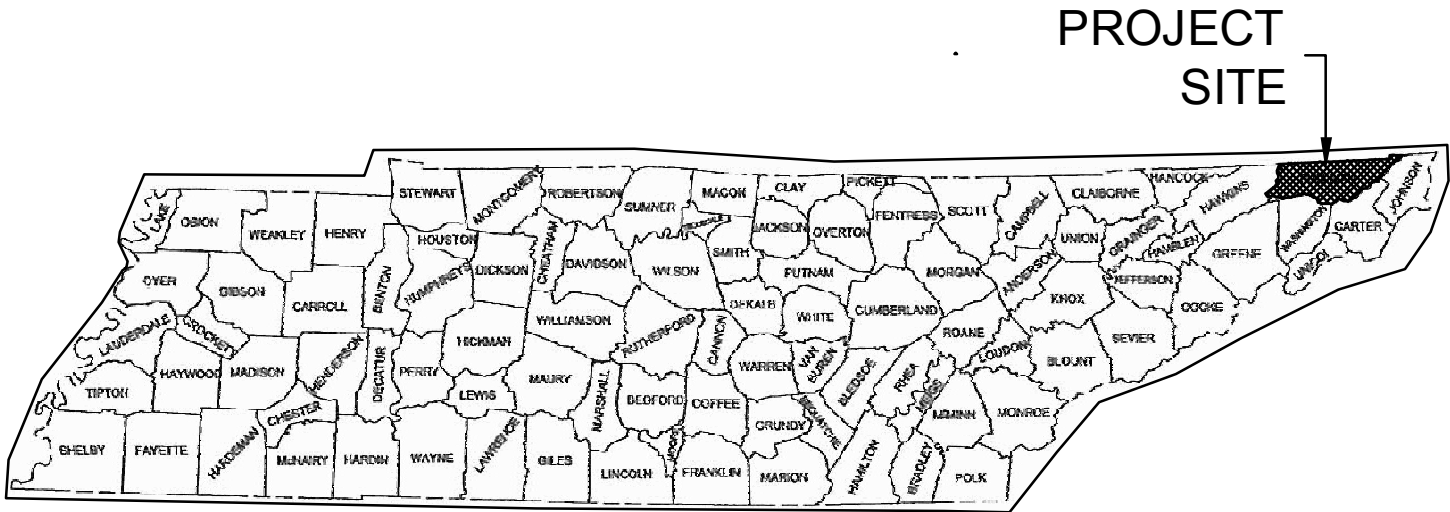
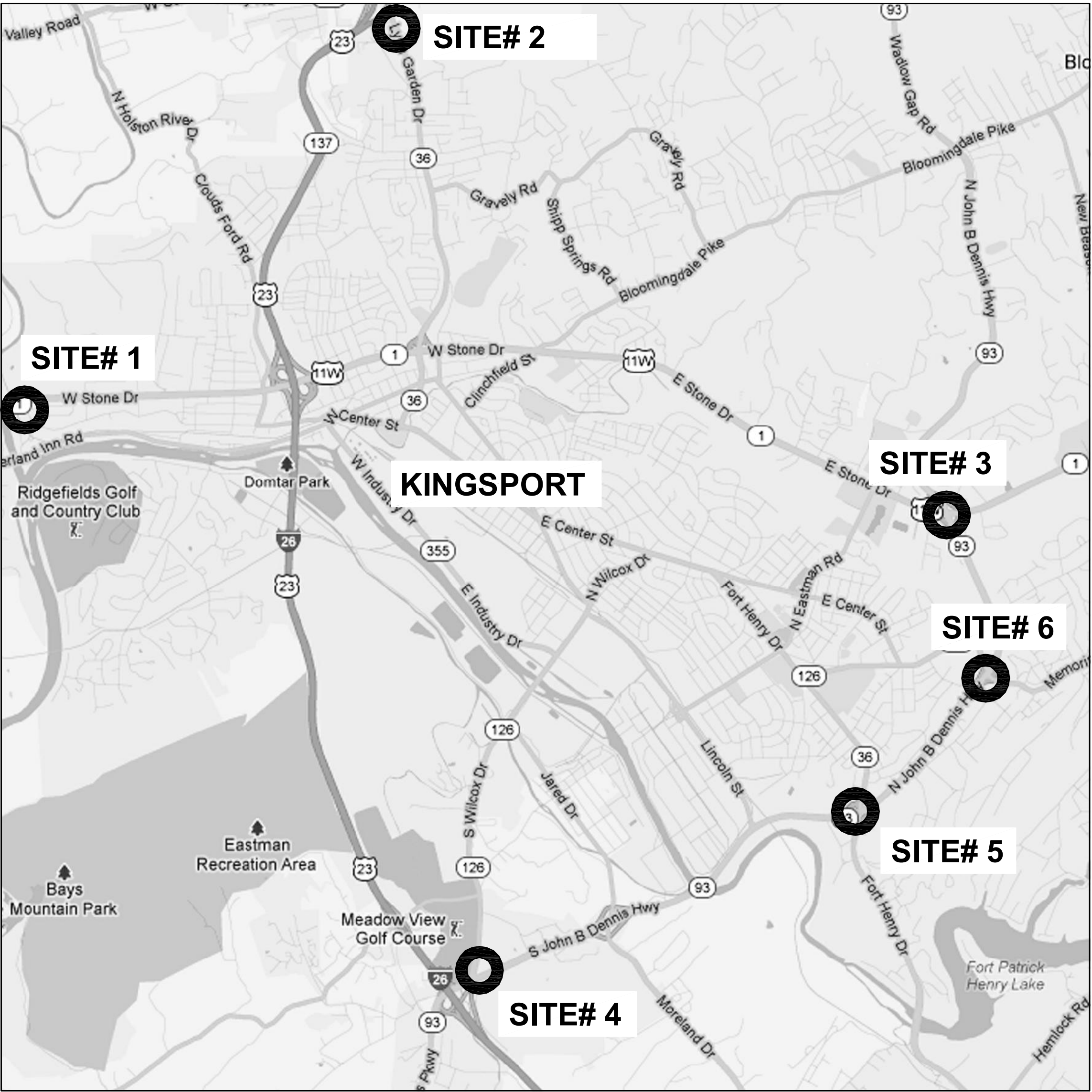
Exhibit "A"

TENNESSEE ROADSCAPES

GATEWAY LANDSCAPE ENHANCEMENTS

LOCALLY MANAGED PROJECT

TYPE	YEAR	PROJECT NO.	SHEET NO.
STATE #	11	82LPLM-F3-009	0
FEDERAL #	11	STP-EN-9108(42)	0



GRANT #105525.10 PROJECT LOCATIONS:

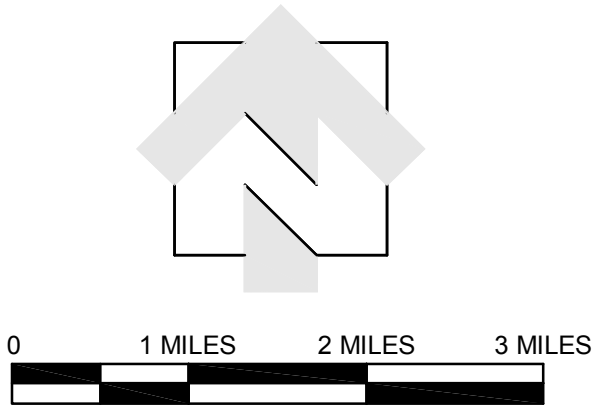
- Location #1- Int. of W Stone Dr (1/11w) and Netherland Inn Rd SW Quad
- Location #2- Northwest Quadrant of intersection of SR-346 & SR 36
- Location #3- SR 1 and SR93 NE Quadrant next to 93 on the hill
- Location #4- NW Quad of SR 126 & SR 9 (There could be additional areas)
- Location #5- SR93 and SR 36 all areas inside interchange
- Location #6- All areas inside int. SR126 Memorial Blvd @ 93 N JBD Hwy

NOTE:  
THIS PROJECT TO BE CONSTRUCTED UNDER THE STANDARD SPECIFICATIONS OF THE TENNESSEE DEPARTMENT OF TRANSPORTATION DATED MARCH 1, 2006 AND ADDITIONAL SPECIFICATIONS AND SPECIAL PROVISIONS CONTAINED IN THE PLANS AND IN THE PROPOSAL CONTRACT.

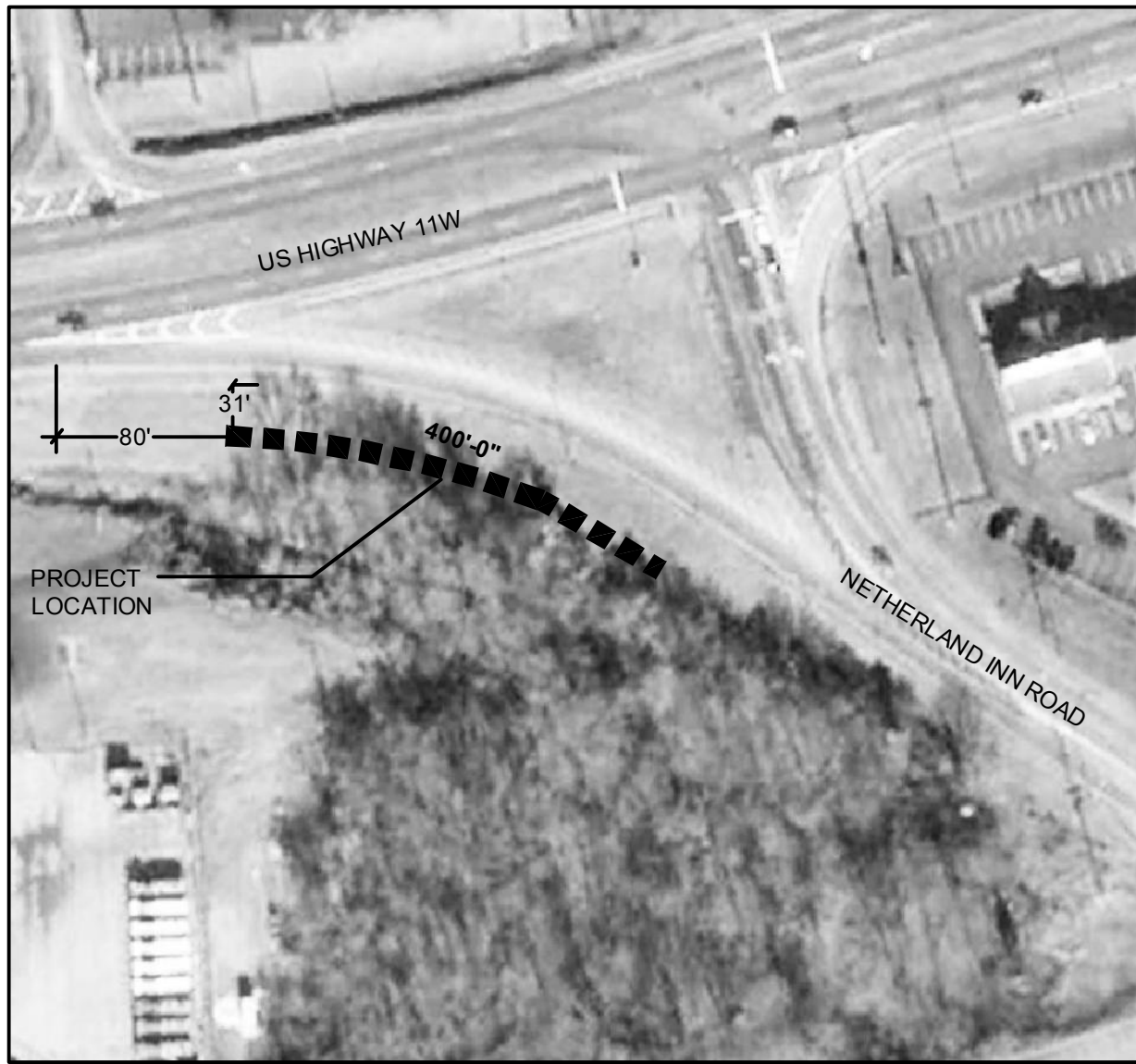
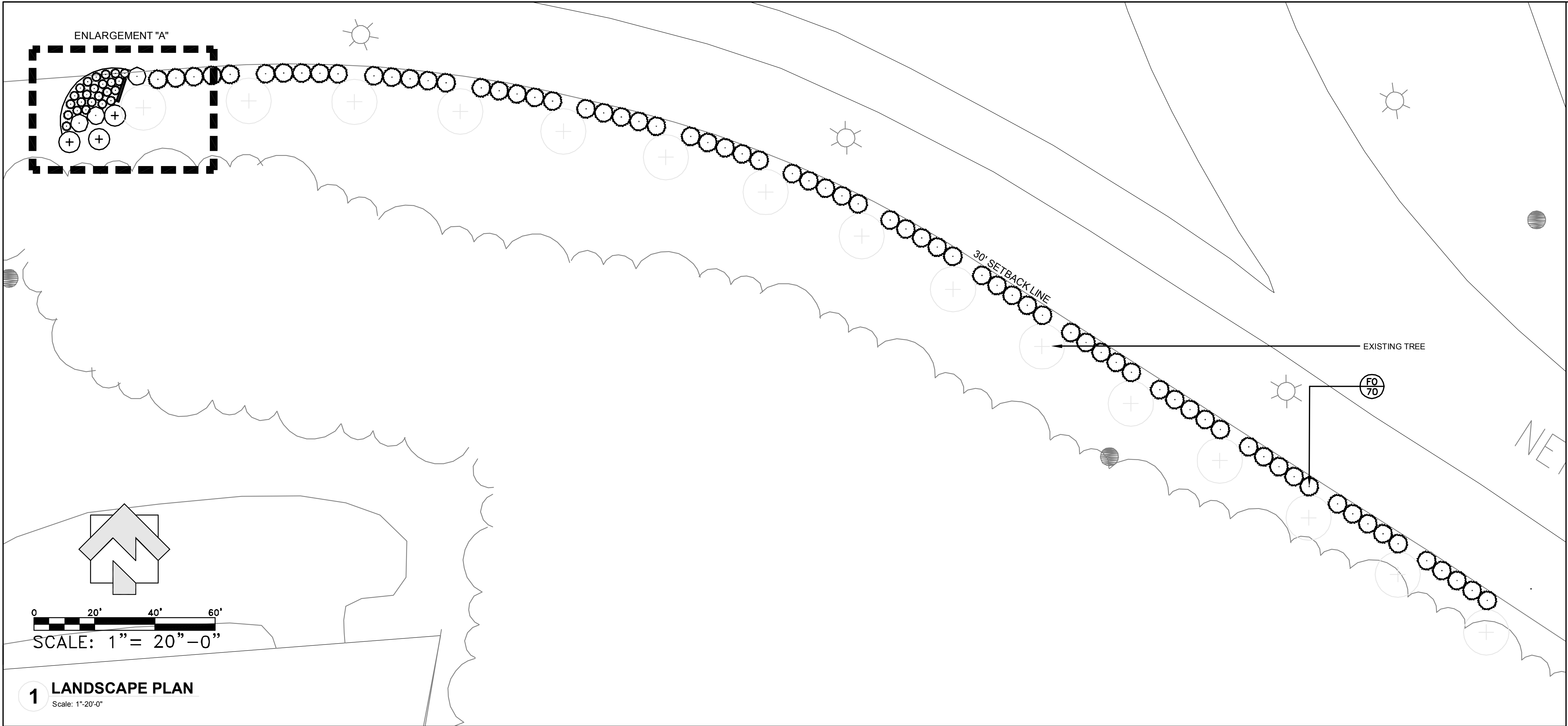
PREPARED BY: LOSE & ASSOCIATES, INC.

PROJECT NO. 82LPLM-F3-009

TDOT PIN: 105525.21

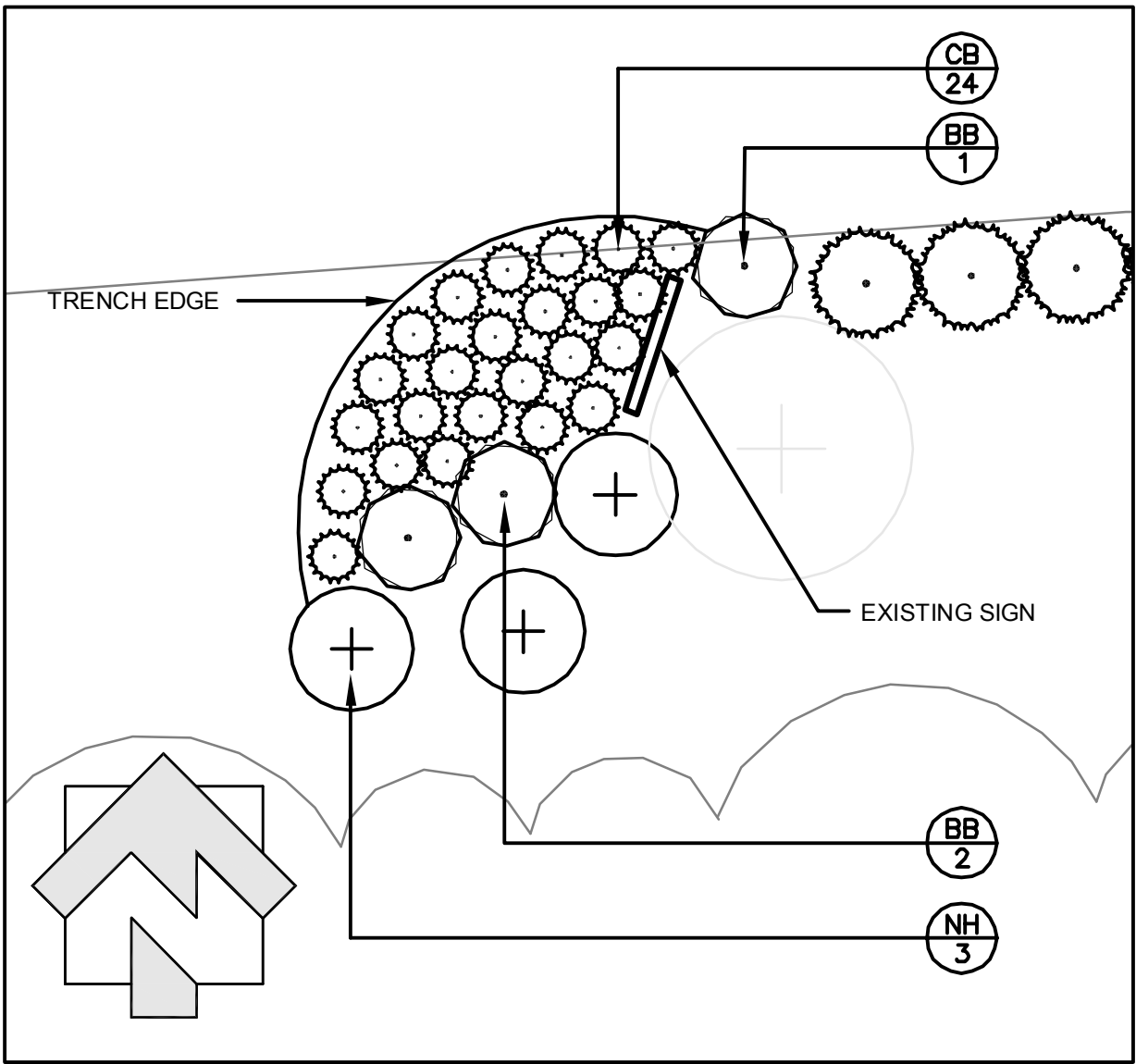






KEY PROJECT LOCATION

Scale: NTS



2 ENLARGEMENT A

Scale: 1"-10'-0"

RIGHT OF WAY PLANS WERE NOT ON FILE/ AVAILABLE FOR THIS SITE AT THE TENNESSEE DEPARTMENT OF TRANSPORTATION. CONTACT PLAN SALES (TDOT) WITH QUESTIONS AT 615.741.3337

CANOPY TREES									
ITEM NUMBER	SYM.	QTY.	BOTANICAL NAME	COMMON NAME	UNIT	CONT.	SIZE	HEIGHT	REMARKS
SHRUBS									
802-03.01	FO	70	<i>Forsythia</i>	FORSYTHIA	EACH	POT	7 GAL	-	-
802-03.02	NH	3	<i>Ilex x 'nellie r. stevens'</i>	NELLIE STEVENS HOLLY	EACH	POT	7 GAL	-	-
802-03.03	BB	3	<i>Euonymus alatus</i>	BURNING BUSH	EACH	POT	7 GAL	-	-
802-03.04	CB	24	<i>Berberis Thunbergii 'Crimson Pygmy'</i>	CRIMSON PYGMY BARBERRY	EACH	POT	3 GAL	-	-
MULCH									
805-01.68	-	6	n/a	MULCH	CY	-	-	-	-

QUANTITIES

ITEM	JAN.	FEB.	MAR.	APR.	MAY	JUN.	JUL.	AUG.	SEPT.	OCT.	NOV.	DEC.
ALL TREE PLANTINGS												

PLANTING SCHEDULE

TYPE	YEAR	PROJECT NO.	SHEET NO.
STATE #	11	82LPLM-F3-009	1
FEDERAL #	11	STP-EN-9108(42)	1

- GENERAL NOTES:**
- UNDERGROUND UTILITIES:  
A. UNDERGROUND UTILITIES HAVE NOT BEEN VERIFIED BY THE OWNER, LANDSCAPE ARCHITECT, OR THEIR REPRESENTATIVES. BEFORE YOU DIG CALL TENNESSEE ONE CALL SYSTEM - 1-800-351-1111.
  - THE CONTRACTOR SHALL DETERMINE THE EXACT LOCATION OF ALL EXISTING UTILITIES BEFORE COMMENCING WORK AND AGREES TO BE RESPONSIBLE FOR ANY AND ALL DAMAGES WHICH MIGHT RESULT FROM THE CONTRACTOR'S FAILURE TO EXACTLY LOCATE AND PRESERVE ANY UNDERGROUND UTILITIES TO REMAIN.
  - THE CONTRACTOR SHALL VERIFY EXISTING CONDITIONS TO ENSURE THAT THE NEW WORK SHALL FIT INTO THE EXISTING SITE IN THE MANNER INTENDED AND AS SHOWN ON THE DRAWINGS. SHOULD ANY CONDITIONS EXIST THAT ARE CONTRARY TO THOSE ON THE DRAWINGS, THE CONTRACTOR SHALL NOTIFY THE OWNER'S REPRESENTATIVE PRIOR TO PERFORMING ANY WORK IN THE AREA INVOLVING DIFFERENCES. NOTIFICATION SHALL BE MADE IN THE FORM OF A DRAWING OR SKETCH INDICATING FIELD MEASUREMENTS AND NOTES RELATING TO THE AREA.
  - THE LANDSCAPE CONTRACTOR WILL BE HELD FINANCIALLY LIABLE FOR ANY DAMAGE CAUSED TO NEW PAVEMENT, CURBING, OR OTHER COMPLETED CONSTRUCTION ITEMS INCURRED DURING THE LANDSCAPE INSTALLATION.
  - THE LANDSCAPE CONTRACTOR IS TO PERFORM A THOROUGH CLEANUP AND QUALITY CONTROL INSPECTION.
  - THE LANDSCAPE CONTRACTOR IS SUBJECT TO RANDOM INSPECTIONS BY TDOT OR A TDOT REPRESENTATIVE AT ANY TIME DURING THE INSTALLATION PROCESS. WORK NOT IN COMPLIANCE WITH PLANS WILL BE REMOVED AND BROUGHT INTO COMPLIANCE.

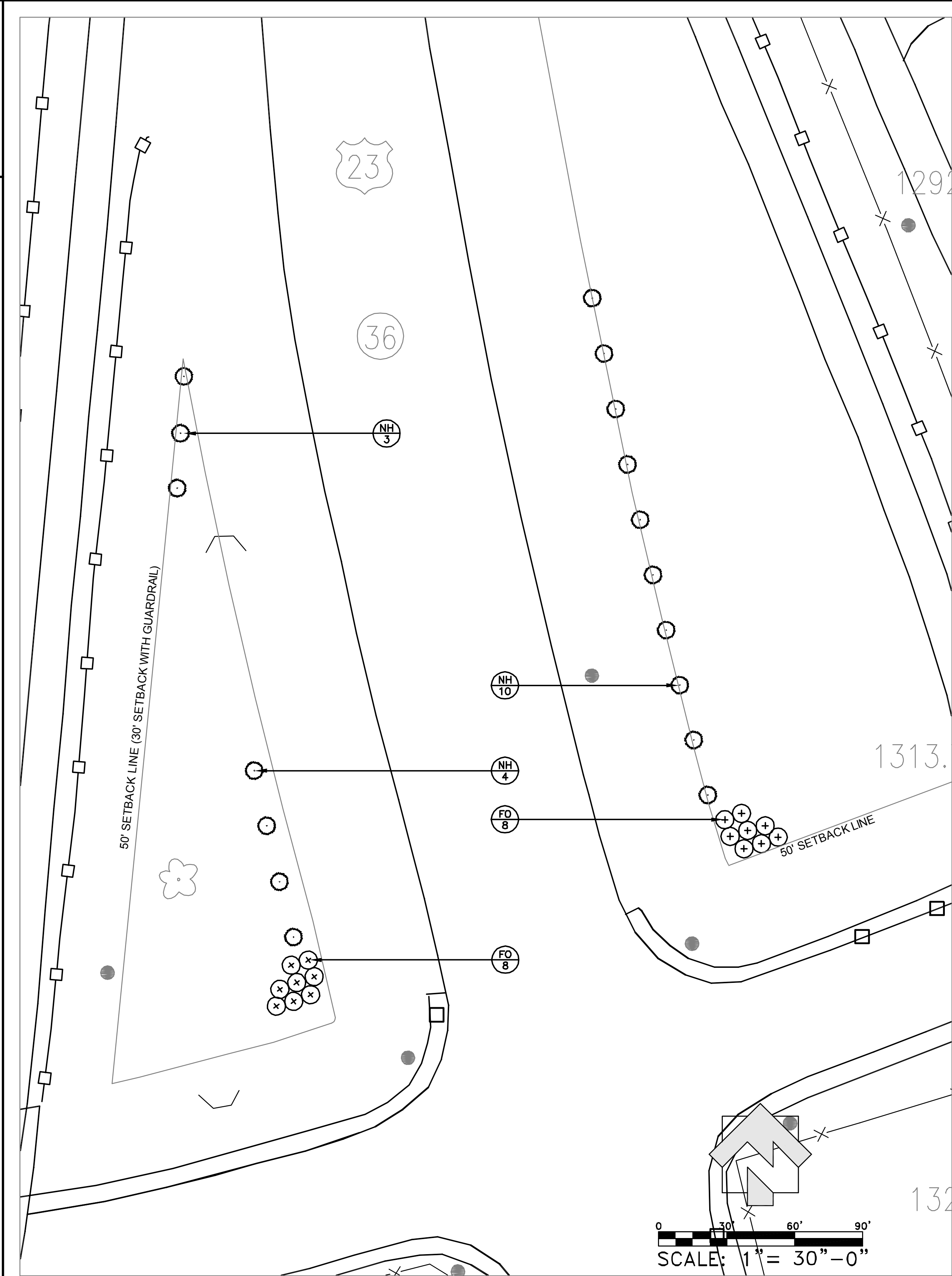
- LANDSCAPE NOTES:**
- PLANTING BEDS AND PLANT LOCATIONS SHALL BE STAKED BY THE LANDSCAPE CONTRACTOR. THE LANDSCAPE CONTRACTOR SHALL NOTIFY TDOT OR A TDOT REPRESENTATIVE FOR APPROVAL PRIOR TO INSTALLATION OF THE PLANTS.
  - PLANTING BEDS SHALL BE CLEARED OF ALL GRASS AND WEEDS PRIOR TO INSTALLATION OF PLANTS, INCLUDING SPRAYING HERBICIDE TO KILL ACTIVELY GROWING PLANTS. PLANT BEDS SHALL BE PREPARED AS CALLED FOR IN PLANTING DETAILS AND AS NOTED ON PLANS.
  - ALL OTHER DISTURBED AREAS ARE TO BE SEEDED AS PER THE PLANS ADDITIONAL SEEDING, IF REQUIRED, WILL BE AS DIRECTED BY TDOT OR A TDOT REPRESENTATIVE.
  - PLANTING BEDS SHALL HAVE A THREE (3) INCH SHREDDED HARDWOOD BARK MULCH OVER THE ENTIRE BED, UNLESS OTHERWISE NOTED ON THE DRAWINGS.
  - PRIOR TO PLANTING, ALL MULCH TREE RINGS SHALL BE TREATED WITH A WATER-SOLUBLE HERBICIDE FOR THE NON-SELECTIVE CONTROL OF ANNUAL AND PERENNIAL WEEDS PRIOR TO PLANTING.
  - ALL TREE PLANTING PITS SHALL BE BACKFILLED WITH A PLANTING SOIL MIXTURE OF 50% ORIGINAL SOIL AND 50% TOPSOIL, THOROUGHLY MIXED. SAMPLE OF MIXTURE TO BE APPROVED BY TDOT OR A TDOT REPRESENTATIVE PRIOR TO INSTALLATION.
  - ALL PLANTED AREAS ARE TO BE FERTILIZED WITH GRANULAR FERTILIZER LANDSCAPE CONTRACTOR IS TO PROVIDE SOIL TEST RESULTS AND PROPOSED FERTILIZER APPLICATION RATES TO TDOT OR A TDOT REPRESENTATIVE FOR APPROVAL. SOIL TEST SAMPLES SHALL BE TAKEN 1000 FEET O.C. ON BOTH SIDES OF THE SUBMITTING SOIL TEST SAMPLE.
  - ALL PLANT MATERIAL IS TO BE NURSERY GROWN AND TO COMPLY WITH AMERICAN STANDARD FOR NURSERY STOCK
  - SPRAY TREES WITH AN ANTI-DESICCANT IF FOLIAGE IS PRESENT.
  - EVERGREEN TREES SHALL BE PLANTED IN THE SAME MANNER AS DECIDUOUS MATERIAL IS PLANTED.
  - DO NOT PRUNE ANY PLANT MATERIAL UNTIL IT HAS BEEN INSPECTED AND ACCEPTED BY TDOT OR A TDOT REPRESENTATIVE.
  - ALL LANDSCAPE MATERIAL SHALL BE APPROVED BY TDOT OR A TDOT REPRESENTATIVE CONTRACTOR'S HOLDING SITE OR AT THIS SITE. IT SHALL BE THE RESPONSIBILITY OF THE LANDSCAPE CONTRACTOR TO NOTIFY TDOT OR A TDOT REPRESENTATIVE OF THE AVAILABILITY OF THE MATERIALS TO BE INSPECTED.
  - ALL MATERIALS INSPECTED ON THE SITE AND FOUND TO BE UNACCEPTABLE SHALL BE REMOVED FROM THE SITE ON THE DAY OF INSPECTION.
  - FIELD CHANGES MUST BE APPROVED IN WRITING BY TDOT OR A TDOT REPRESENTATIVE BEFORE INSTALLATION. MATERIALS MAY BE VIEWED AT LANDSCAPE
  - EXISTING PLANT MATERIAL IS TO BE EVALUATED BY THE LANDSCAPE ARCHITECT FOR POSSIBLE RELOCATION ON SITE. THE LANDSCAPE CONTRACTOR IS TO NOTIFY THE LANDSCAPE ARCHITECT FORTY- EIGHT (48) HOURS BEFORE BEGINNING WORK.
  - ALL PLANT MATERIAL SHALL BE SUPPLIED BY APPROPRIATE SOURCES TO PREVENT UNDUE STRESS OR PROLONGED ACCLIMATIZATION WHICH WOULD INHIBIT PLANT GROWTH.
  - LANDSCAPE CONTRACTOR IS TO VERIFY PLANT QUANTITIES SHOWN ON PLAN AND IN PLANT LIST. IF DISCREPANCIES OCCUR, LANDSCAPE CONTRACTOR IS TO CONTACT LANDSCAPE ARCHITECT IMMEDIATELY. QUANTITIES SHOWN ON PLAN TAKE PRECEDENCE.
  - REFER TO PLANTING SCHEDULE FOR ACCEPTABLE TIMES FOR INSTALLING PLANT MATERIALS.

**TENNESSEE ONE-CALL**  
SYSTEM BEFORE  
YOU DIG CALL  
1-800-351-1111

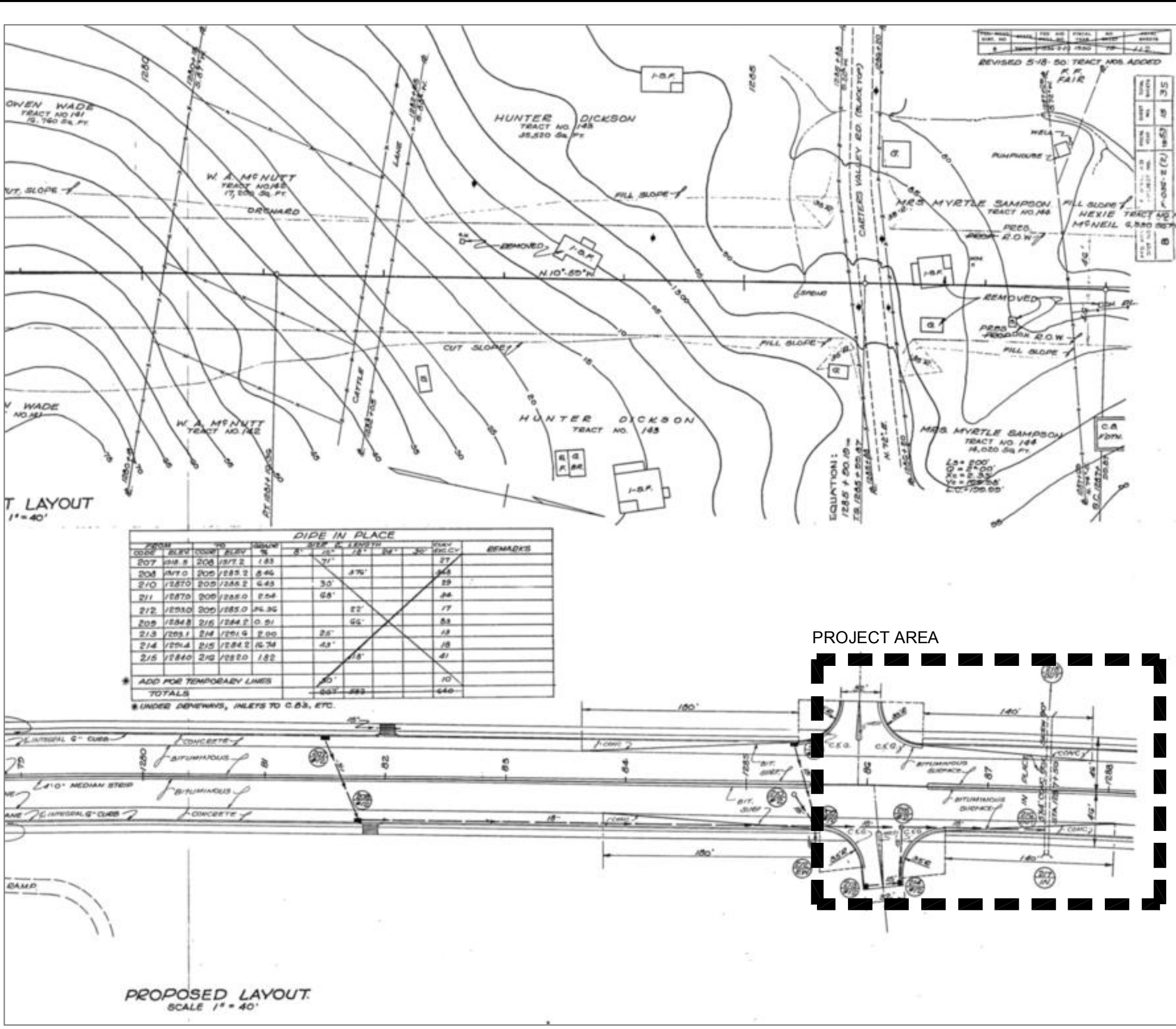
**LOSE & ASSOCIATES, INC.**  
LANDSCAPE ARCHITECTURE • ARCHITECTURE • ENGINEERING  
1514 5th Avenue North Suite 200 Nashville, TN 37208 615.242.0040

DATE: JULY 17, 2012

**LANDSCAPE PLAN**  
**(Site 1)**  
SCALE: 1"=4'



1 LANDSCAPE PLAN  
Scale: See Graphic Scale



2 TDOT RIGHT OF WAY PLAN EXCERPT  
Scale: See Graphic Scale

CANOPY TREES									
ITEM NUMBER	SYM.	QTY.	BOTANICAL NAME	COMMON NAME	UNIT	CONT.	SIZE	HEIGHT	REMARKS
			n/a	-					
SHRUBS									
802-03.01	FO	16	Forsythia	FORSYTHIA	EACH	POT	7 GAL	-	-
802-03.02	NH	17	Ilex x 'nellie r. stevens'	NELLIE STEVENS HOLLY	EACH	POT	7 GAL	-	-
								-	-
MULCH									
805-01.68	-	6	n/a	MULCH	CY	-	-	-	-

PLANTING SCHEDULE

ITEM	JAN.	FEB.	MAR.	APR.	MAY	JUN.	JUL.	AUG.	SEPT.	OCT.	NOV.	DEC.
ALL TREE PLANTINGS												

TYPE	YEAR	PROJECT NO.	SHEET NO.
STATE #	11	82LPLM-F3-009	2
FEDERAL #	11	STP-EN-9108(42)	2

**GENERAL NOTES:**

- UNDERGROUND UTILITIES:  
A. UNDERGROUND UTILITIES HAVE NOT BEEN VERIFIED BY THE OWNER, LANDSCAPE ARCHITECT, OR THEIR REPRESENTATIVES. BEFORE YOU DIG CALL TENNESSEE ONE CALL SYSTEM - 1-800-351-1111.
- THE CONTRACTOR SHALL DETERMINE THE EXACT LOCATION OF ALL EXISTING UTILITIES BEFORE COMMENCING WORK AND AGREES TO BE RESPONSIBLE FOR ANY AND ALL DAMAGES WHICH MIGHT RESULT FROM THE CONTRACTOR'S FAILURE TO EXACTLY LOCATE AND PRESERVE ANY UNDERGROUND UTILITIES TO REMAIN.
- THE CONTRACTOR SHALL VERIFY EXISTING CONDITIONS TO ENSURE THAT THE NEW WORK SHALL FIT INTO THE EXISTING SITE IN THE MANNER INTENDED AND AS SHOWN ON THE DRAWINGS. SHOULD ANY CONDITIONS EXIST THAT ARE CONTRARY TO THOSE ON THE DRAWINGS, THE CONTRACTOR SHALL NOTIFY THE OWNER'S REPRESENTATIVE PRIOR TO PERFORMING ANY WORK IN THE AREA INVOLVING DIFFERENCES. NOTIFICATION SHALL BE MADE IN THE FORM OF A DRAWING OR SKETCH INDICATING FIELD MEASUREMENTS AND NOTES RELATING TO THE AREA.
- THE LANDSCAPE CONTRACTOR WILL BE HELD FINANCIALLY LIABLE FOR ANY DAMAGE CAUSED TO NEW PAVEMENT, CURBING, OR OTHER COMPLETED CONSTRUCTION ITEMS INCURRED DURING THE LANDSCAPE INSTALLATION.
- THE LANDSCAPE CONTRACTOR IS TO PERFORM A THOROUGH CLEANUP AND QUALITY CONTROL INSPECTION.
- THE LANDSCAPE CONTRACTOR IS SUBJECT TO RANDOM INSPECTIONS BY TDOT OR A TDOT REPRESENTATIVE AT ANY TIME DURING THE INSTALLATION PROCESS. WORK NOT IN COMPLIANCE WITH PLANS WILL BE REMOVED AND BROUGHT INTO COMPLIANCE.

**LANDSCAPE NOTES:**

- PLANTING BEDS AND PLANT LOCATIONS SHALL BE STAKED BY THE LANDSCAPE CONTRACTOR. THE LANDSCAPE CONTRACTOR SHALL NOTIFY TDOT OR A TDOT REPRESENTATIVE FOR APPROVAL PRIOR TO INSTALLATION OF THE PLANTS.
- PLANTING BEDS SHALL BE CLEARED OF ALL GRASS AND WEEDS PRIOR TO INSTALLATION OF PLANTS, INCLUDING SPRAYING HERBICIDE TO KILL ACTIVELY GROWING PLANTS. PLANT BEDS SHALL BE PREPARED AS CALLED FOR IN PLANTING DETAILS AND AS NOTED ON PLANS.
- ALL OTHER DISTURBED AREAS ARE TO BE SEEDED AS PER THE PLANS ADDITIONAL SEEDING, IF REQUIRED, WILL BE AS DIRECTED BY TDOT OR A TDOT REPRESENTATIVE.
- PLANTING BEDS SHALL HAVE A THREE (3) INCH SHREDDED HARDWOOD BARK MULCH OVER THE ENTIRE BED, UNLESS OTHERWISE NOTED ON THE DRAWINGS.
- PRIOR TO PLANTING, ALL MULCH TREE RINGS SHALL BE TREATED WITH A WATER-SOLUBLE HERBICIDE FOR THE NON-SELECTIVE CONTROL OF ANNUAL AND PERENNIAL WEEDS PRIOR TO PLANTING.
- ALL TREE PLANTING PITS SHALL BE BACKFILLED WITH A PLANTING SOIL MIXTURE OF 50% ORIGINAL SOIL AND 50% TOPSOIL, THOROUGHLY MIXED. SAMPLE OF MIXTURE TO BE APPROVED BY TDOT OR A TDOT REPRESENTATIVE PRIOR TO INSTALLATION.
- ALL PLANTED AREAS ARE TO BE FERTILIZED WITH GRANULAR FERTILIZER LANDSCAPE CONTRACTOR IS TO PROVIDE SOIL TEST RESULTS AND PROPOSED. FERTILIZER APPLICATION RATES TO TDOT OR A TDOT REPRESENTATIVE FOR APPROVAL. SOIL TEST SAMPLES SHALL BE TAKEN 1000 FEET O.C. ON BOTH SIDES OF THE SUBMITTING SOIL TEST SAMPLE.
- ALL PLANT MATERIAL IS TO BE NURSERY GROWN AND TO COMPLY WITH AMERICAN STANDARD FOR NURSERY STOCK
- SPRAY TREES WITH AN ANTI-DESICCANT IF FOLIAGE IS PRESENT.
- EVERGREEN TREES SHALL BE PLANTED IN THE SAME MANNER AS DECIDUOUS MATERIAL IS PLANTED.
- DO NOT PRUNE ANY PLANT MATERIAL UNTIL IT HAS BEEN INSPECTED AND ACCEPTED BY TDOT OR A TDOT REPRESENTATIVE.
- ALL LANDSCAPE MATERIAL SHALL BE APPROVED BY TDOT OR A TDOT REPRESENTATIVE CONTRACTOR'S HOLDING SITE OR AT THIS SITE. IT SHALL BE THE RESPONSIBILITY OF THE LANDSCAPE CONTRACTOR TO NOTIFY TDOT OR A TDOT REPRESENTATIVE OF THE AVAILABILITY OF THE MATERIALS TO BE INSPECTED.
- ALL MATERIALS INSPECTED ON THE SITE AND FOUND TO BE UNACCEPTABLE SHALL BE REMOVED FROM THE SITE ON THE DAY OF INSPECTION.
- FIELD CHANGES MUST BE APPROVED IN WRITING BY TDOT OR A TDOT REPRESENTATIVE BEFORE INSTALLATION. MATERIALS MAY BE VIEWED AT LANDSCAPE
- EXISTING PLANT MATERIAL IS TO BE EVALUATED BY THE LANDSCAPE ARCHITECT FOR POSSIBLE RELOCATION ON SITE. THE LANDSCAPE CONTRACTOR IS TO NOTIFY THE LANDSCAPE ARCHITECT FORTY-EIGHT (48) HOURS BEFORE BEGINNING WORK.
- ALL PLANT MATERIAL SHALL BE SUPPLIED BY APPROPRIATE SOURCES TO PREVENT UNDUE STRESS OR PROLONGED ACCLIMATIZATION WHICH WOULD INHIBIT PLANT GROWTH.
- LANDSCAPE CONTRACTOR IS TO VERIFY PLANT QUANTITIES SHOWN ON PLAN AND IN PLANT LIST. IF DISCREPANCIES OCCUR, LANDSCAPE CONTRACTOR IS TO CONTACT LANDSCAPE ARCHITECT IMMEDIATELY. QUANTITIES SHOWN ON PLAN TAKE PRECEDENCE.
- REFER TO PLANTING SCHEDULE FOR ACCEPTABLE TIMES FOR INSTALLING PLANT MATERIALS.



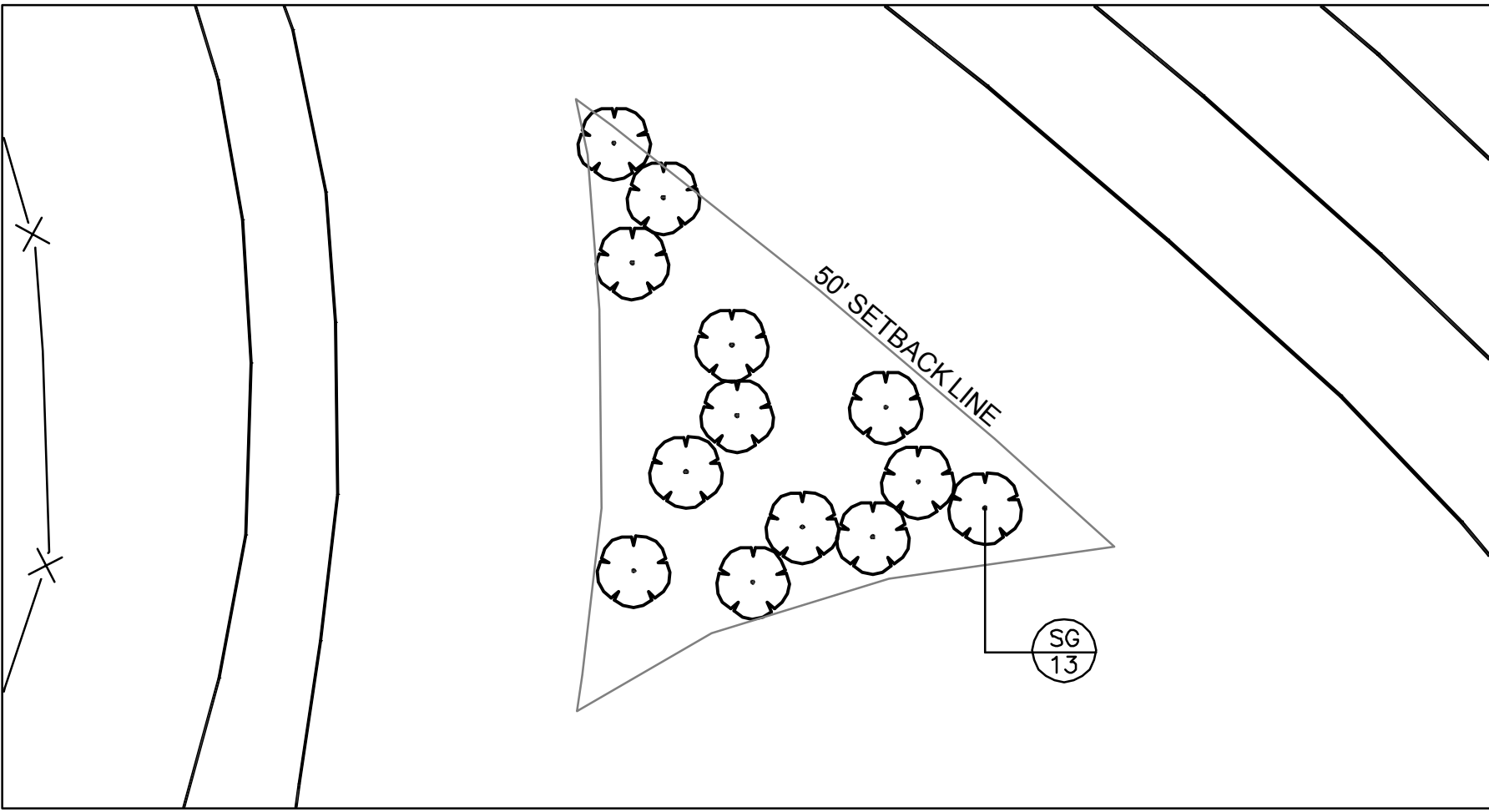
TENNESSEE  
ONE-CALL  
SYSTEM BEFORE  
YOU DIG CALL  
1-800-351-1111



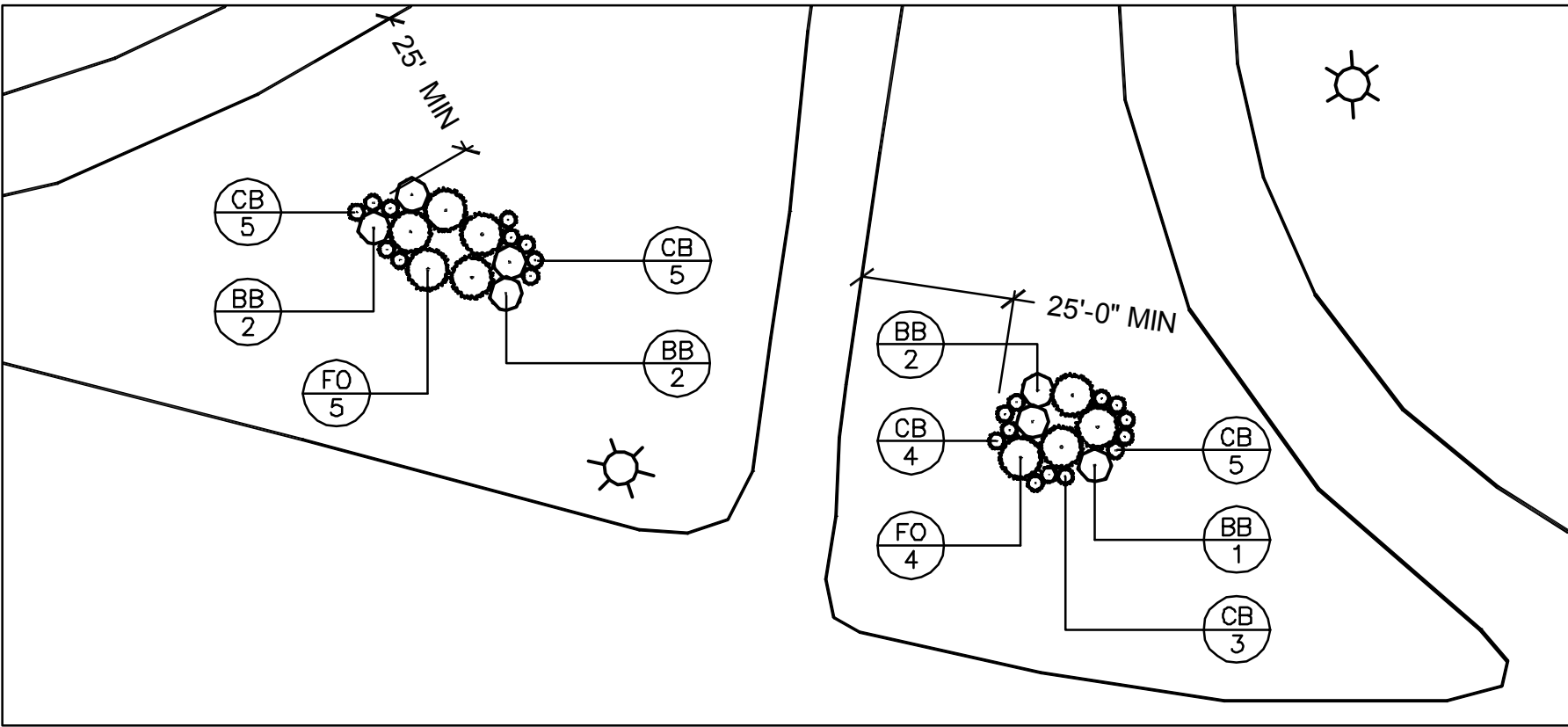
DATE: JULY 17, 2012

LANDSCAPE  
PLAN  
(Site 2)

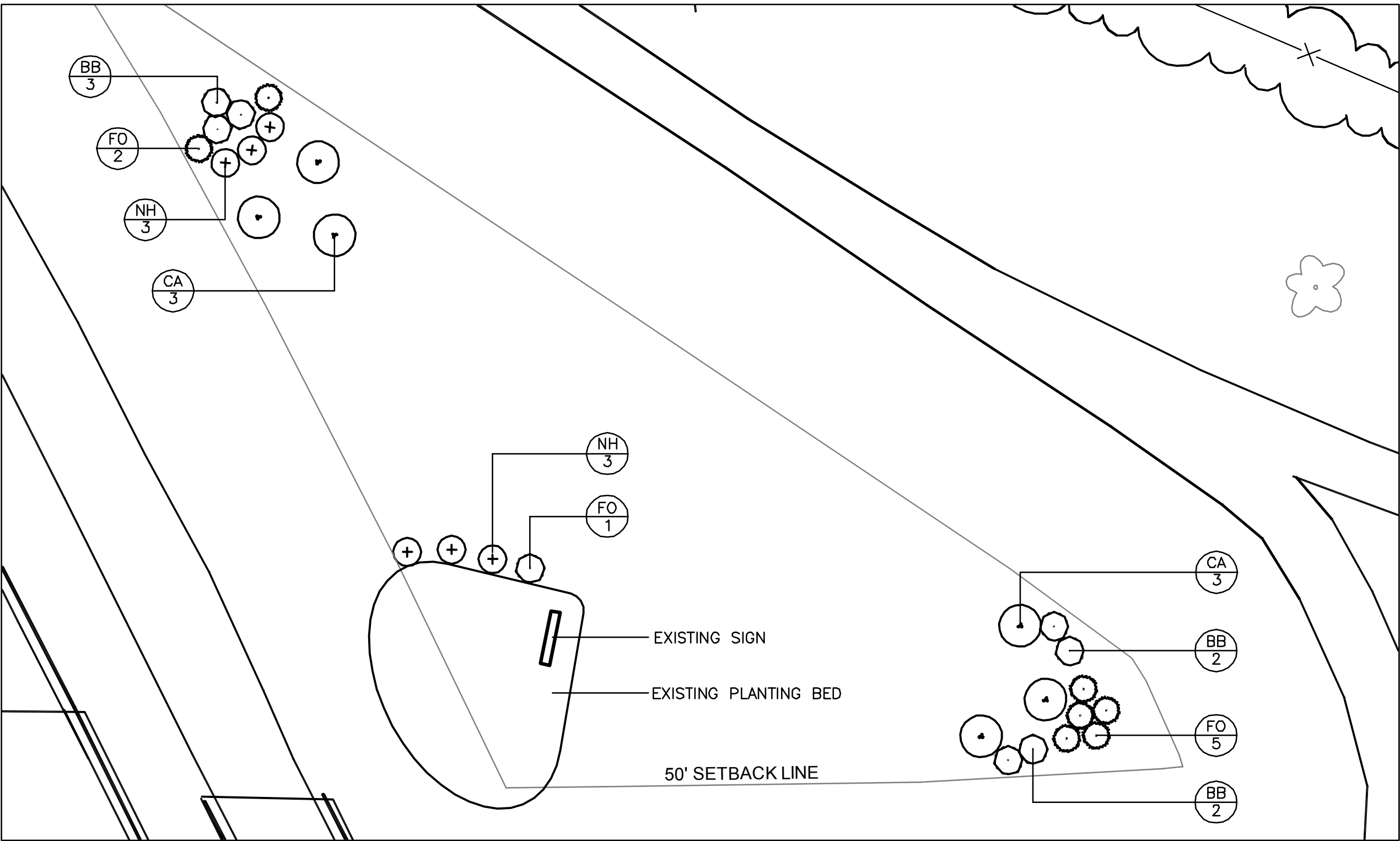




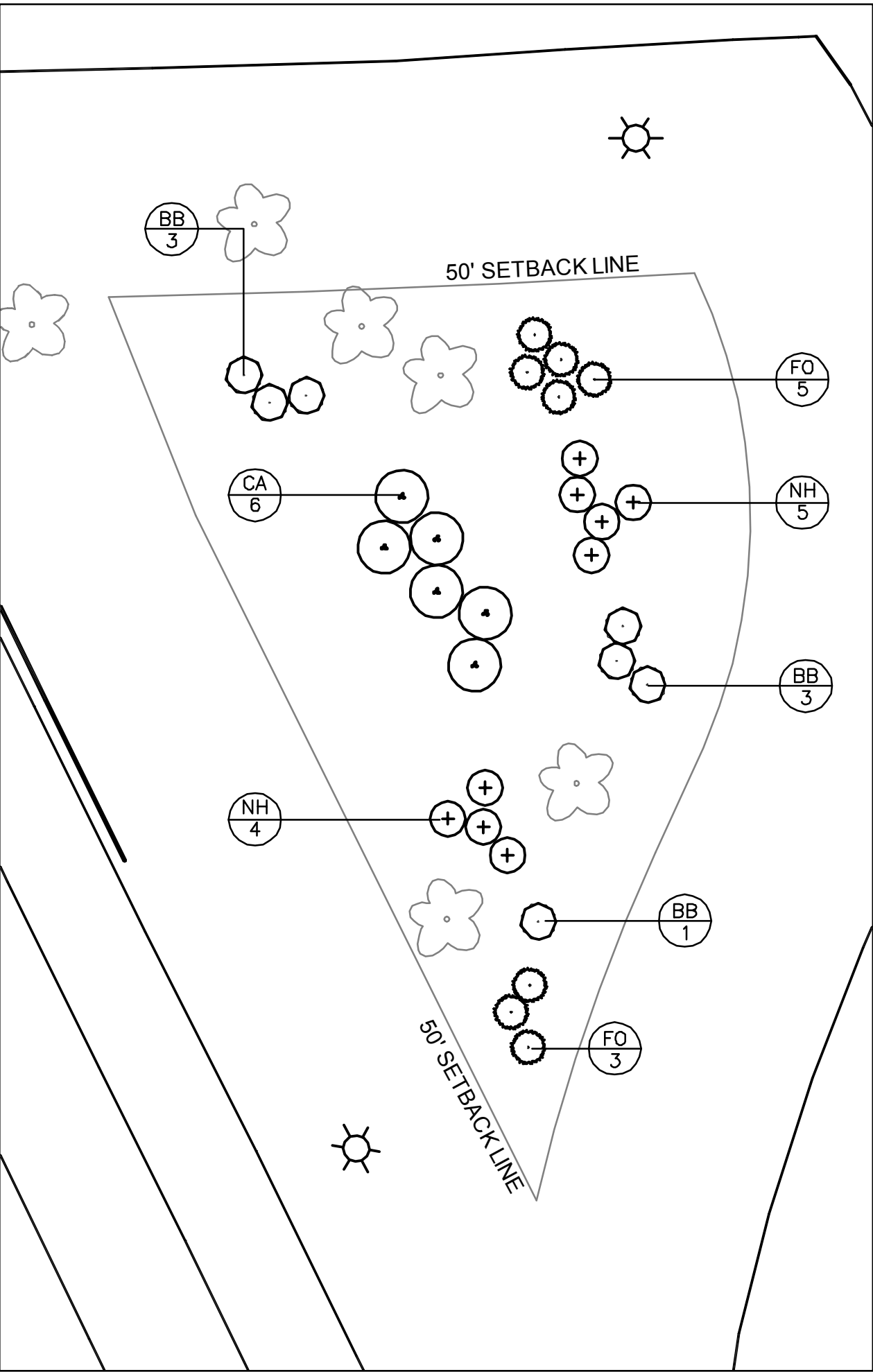
1 ENLARGEMENT AREA #A  
Scale: See Graphic Scale



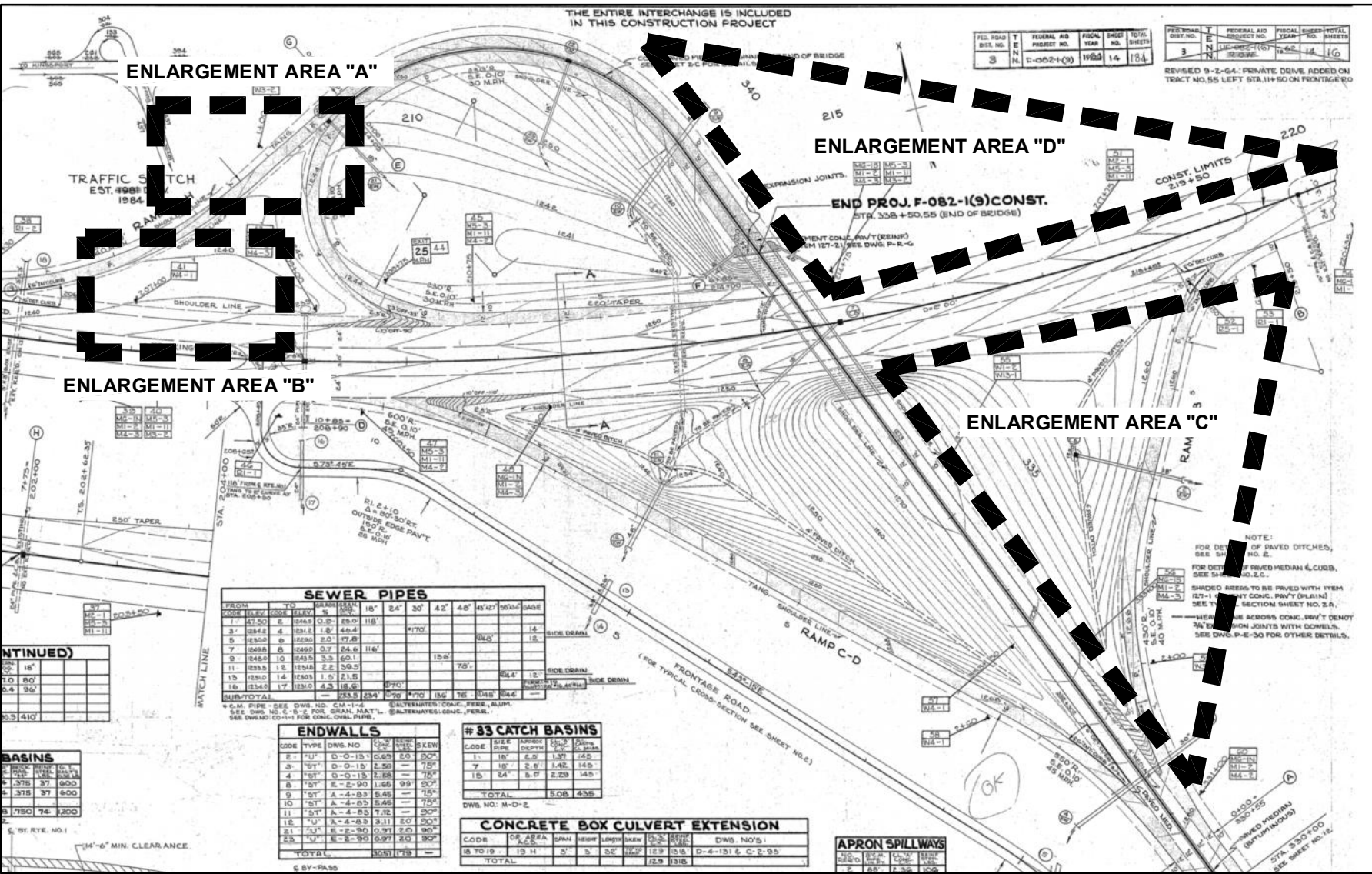
2 ENLARGEMENT AREA #B  
Scale: See Graphic Scale



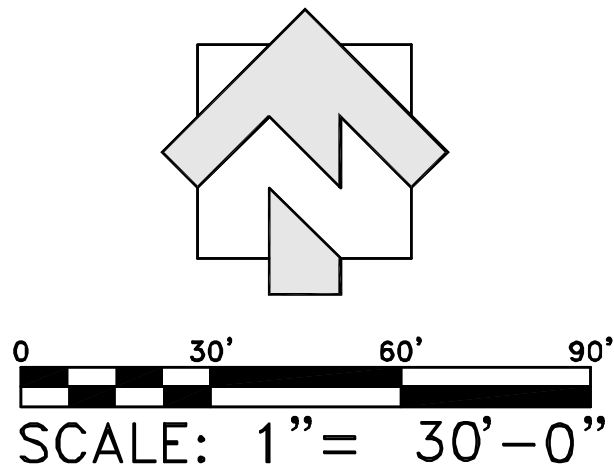
4 ENLARGEMENT AREA #D  
Scale: See Graphic Scale



3 ENLARGEMENT AREA #C  
Scale: See Graphic Scale



KEY RIGHT OF WAY PLAN EXCERPT  
Scale: See Graphic Scale



QUANTITIES

CANOPY TREES									
ITEM NUMBER	SYM.	QTY.	BOTANICAL NAME	COMMON NAME	UNIT	CONT.	SIZE	HEIGHT	REMARKS
802-01.07	SG	13	<i>Liquidambar styraciflua</i>	SWEET GUM	EACH	B&B	1.5"-2" CAL	-	MATCHED
802-01.11	CA	12	<i>Malus Augustifolia</i>	CRAB APPLE	EACH	B&B	1.5"-2" CAL	-	MATCHED
802-03.02	NH	15	<i>Ilex x 'Nellie r. Stevens'</i>	NELLIE STEVENS HOLLY	EACH	POT	7 GAL	-	-
SHRUBS									
802-03.01	FO	25	<i>Forsythia</i>	FORSYTHIA	EACH	POT	7 GAL	-	-
802-03.04	CB	22	<i>Berberis thunbergii 'Crimson Pygmy'</i>	CRIMSON PYGMY BARBERRY	EACH	POT	3 GAL	-	-
802-03.03	BB	21	<i>Euonymus alatus</i>	BURNING BUSH	EACH	POT	7 GAL	-	-
MULCH									
805-01.68	-	10	n/a	MULCH	CY	-	-	-	-

PLANTING SCHEDULE

ITEM	JAN.	FEB.	MAR.	APR.	MAY	JUN.	JUL.	AUG.	SEPT.	OCT.	NOV.	DEC.
ALL TREE PLANTINGS												

TYPE	YEAR	PROJECT NO.	SHEET NO.
STATE #	11	82LPLM-F3-009	3
FEDERAL #	11	STP-EN-9108(42)	3

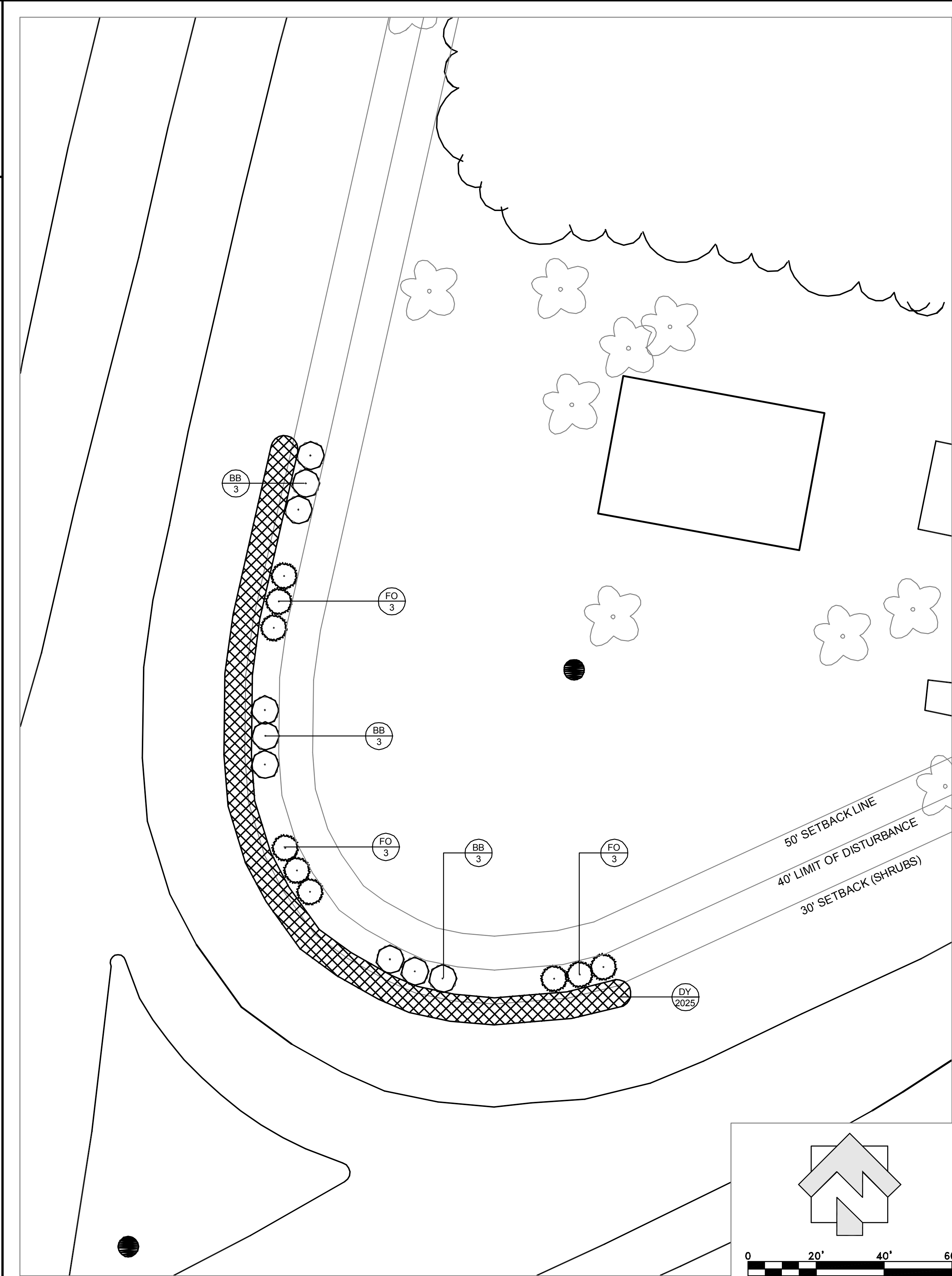
- GENERAL NOTES:**
- UNDERGROUND UTILITIES:  
A. UNDERGROUND UTILITIES HAVE NOT BEEN VERIFIED BY THE OWNER, LANDSCAPE ARCHITECT, OR THEIR REPRESENTATIVES. BEFORE YOU DIG CALL TENNESSEE ONE CALL SYSTEM - 1-800-351-1111.
  - THE CONTRACTOR SHALL DETERMINE THE EXACT LOCATION OF ALL EXISTING UTILITIES BEFORE COMMENCING WORK AND AGREES TO BE RESPONSIBLE FOR ANY AND ALL DAMAGES WHICH MIGHT RESULT FROM THE CONTRACTOR'S FAILURE TO EXACTLY LOCATE AND PRESERVE ANY UNDERGROUND UTILITIES TO REMAIN.
  - THE CONTRACTOR SHALL VERIFY EXISTING CONDITIONS TO ENSURE THAT THE NEW WORK SHALL FIT INTO THE EXISTING SITE IN THE MANNER INTENDED AND AS SHOWN ON THE DRAWINGS. SHOULD ANY CONDITIONS EXIST THAT ARE CONTRARY TO THOSE ON THE DRAWINGS, THE CONTRACTOR SHALL NOTIFY THE OWNER'S REPRESENTATIVE PRIOR TO PERFORMING ANY WORK IN THE AREA INVOLVING DIFFERENCES. NOTIFICATION SHALL BE MADE IN THE FORM OF A DRAWING OR SKETCH INDICATING FIELD MEASUREMENTS AND NOTES RELATING TO THE AREA.
  - THE LANDSCAPE CONTRACTOR WILL BE HELD FINANCIALLY LIABLE FOR ANY DAMAGE CAUSED TO NEW PAVEMENT, CURBING, OR OTHER COMPLETED CONSTRUCTION ITEMS INCURRED DURING THE LANDSCAPE INSTALLATION.
  - THE LANDSCAPE CONTRACTOR IS TO PERFORM A THOROUGH CLEANUP AND QUALITY CONTROL INSPECTION.
  - THE LANDSCAPE CONTRACTOR IS SUBJECT TO RANDOM INSPECTIONS BY TDOT OR A TDOT REPRESENTATIVE AT ANY TIME DURING THE INSTALLATION PROCESS. WORK NOT IN COMPLIANCE WITH PLANS WILL BE REMOVED AND BROUGHT INTO COMPLIANCE.

- LANDSCAPE NOTES:**
- PLANTING BEDS AND PLANT LOCATIONS SHALL BE STAKED BY THE LANDSCAPE CONTRACTOR. THE LANDSCAPE CONTRACTOR SHALL NOTIFY TDOT OR A TDOT REPRESENTATIVE FOR APPROVAL PRIOR TO INSTALLATION OF THE PLANTS.
  - PLANTING BEDS SHALL BE CLEARED OF ALL GRASS AND WEEDS PRIOR TO INSTALLATION OF PLANTS, INCLUDING SPRAYING HERBICIDE TO KILL ACTIVELY GROWING PLANTS. PLANT BEDS SHALL BE PREPARED AS CALLED FOR IN PLANTING DETAILS AND AS NOTED ON PLANS.
  - ALL OTHER DISTURBED AREAS ARE TO BE SEEDED AS PER THE PLANS. ADDITIONAL SEEDING, IF REQUIRED, WILL BE AS DIRECTED BY TDOT OR A TDOT REPRESENTATIVE.
  - PLANTING BEDS SHALL HAVE A THREE (3) INCH SHREDDED HARDWOOD BARK MULCH OVER THE ENTIRE BED, UNLESS OTHERWISE NOTED ON THE DRAWINGS.
  - PRIOR TO PLANTING, ALL MULCH TREE RINGS SHALL BE TREATED WITH A WATER-SOLUBLE HERBICIDE FOR THE NON-SELECTIVE CONTROL OF ANNUAL AND PERENNIAL WEEDS PRIOR TO PLANTING.
  - ALL TREE PLANTING PITS SHALL BE BACKFILLED WITH A PLANTING SOIL MIXTURE OF 50% ORIGINAL SOIL AND 50% TOPSOIL, THOROUGHLY MIXED. SAMPLE OF MIXTURE TO BE APPROVED BY TDOT OR A TDOT REPRESENTATIVE PRIOR TO INSTALLATION.
  - ALL PLANTED AREAS ARE TO BE FERTILIZED WITH GRANULAR FERTILIZER. LANDSCAPE CONTRACTOR IS TO PROVIDE SOIL TEST RESULTS AND PROPOSED FERTILIZER APPLICATION RATES TO TDOT OR A TDOT REPRESENTATIVE FOR APPROVAL. SOIL TEST SAMPLES SHALL BE TAKEN 1000 FEET O.C. ON BOTH SIDES OF THE SUBMITTING SOIL TEST SAMPLE.
  - ALL PLANT MATERIAL IS TO BE NURSERY GROWN AND TO COMPLY WITH AMERICAN STANDARD FOR NURSERY STOCK.
  - SPRAY TREES WITH AN ANTI-DESICCANT IF FOLIAGE IS PRESENT.
  - EVERGREEN TREES SHALL BE PLANTED IN THE SAME MANNER AS DECIDUOUS MATERIAL IS PLANTED.
  - DO NOT PRUNE ANY PLANT MATERIAL UNTIL IT HAS BEEN INSPECTED AND ACCEPTED BY TDOT OR A TDOT REPRESENTATIVE.
  - ALL LANDSCAPE MATERIAL SHALL BE APPROVED BY TDOT OR A TDOT REPRESENTATIVE CONTRACTOR'S HOLDING SITE OR AT THIS SITE. IT SHALL BE THE RESPONSIBILITY OF THE LANDSCAPE CONTRACTOR TO NOTIFY TDOT OR A TDOT REPRESENTATIVE OF THE AVAILABILITY OF THE MATERIALS TO BE INSPECTED.
  - ALL MATERIALS INSPECTED ON THE SITE AND FOUND TO BE UNACCEPTABLE SHALL BE REMOVED FROM THE SITE ON THE DAY OF INSPECTION.
  - FIELD CHANGES MUST BE APPROVED IN WRITING BY TDOT OR A TDOT REPRESENTATIVE BEFORE INSTALLATION. MATERIALS MAY BE VIEWED AT LANDSCAPE.
  - EXISTING PLANT MATERIAL IS TO BE EVALUATED BY THE LANDSCAPE ARCHITECT FOR POSSIBLE RELOCATION ON SITE. THE LANDSCAPE CONTRACTOR IS TO NOTIFY THE LANDSCAPE ARCHITECT FORTY-EIGHT (48) HOURS BEFORE BEGINNING WORK.
  - ALL PLANT MATERIAL SHALL BE SUPPLIED BY APPROPRIATE SOURCES TO PREVENT UNDUE STRESS OR PROLONGED ACCLIMATIZATION WHICH WOULD INHIBIT PLANT GROWTH.
  - LANDSCAPE CONTRACTOR IS TO VERIFY PLANT QUANTITIES SHOWN ON PLAN AND IN PLANT LIST. IF DISCREPANCIES OCCUR, LANDSCAPE CONTRACTOR IS TO CONTACT LANDSCAPE ARCHITECT IMMEDIATELY. QUANTITIES SHOWN ON PLAN TAKE PRECEDENCE.
  - REFER TO PLANTING SCHEDULE FOR ACCEPTABLE TIMES FOR INSTALLING PLANT MATERIALS.

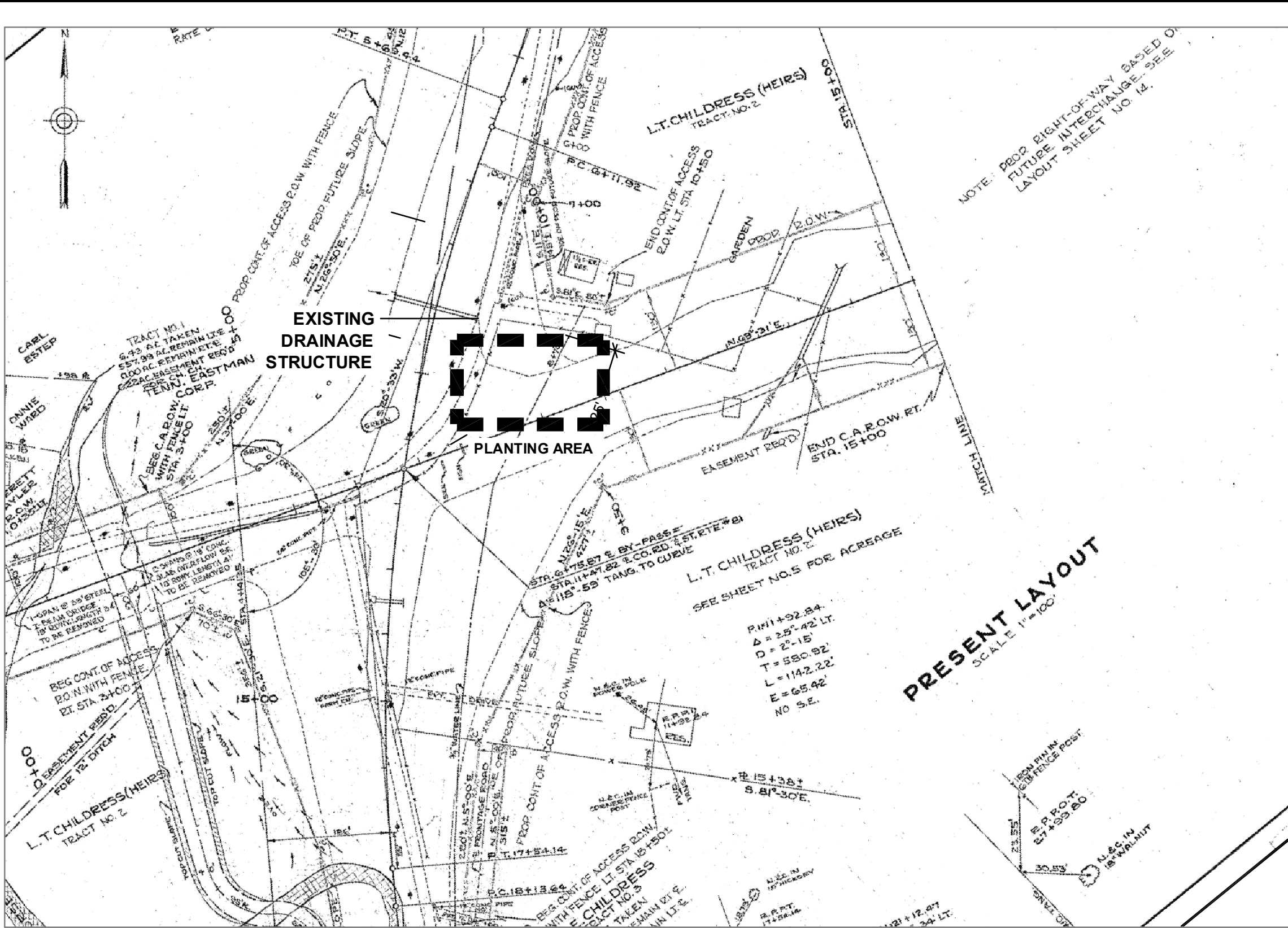


TENNESSEE  
ONE-CALL  
SYSTEM BEFORE  
YOU DIG CALL  
1-800-351-1111





1 LANDSCAPE PLAN  
Scale: See Graphic Scale



2 RIGHT OF WAY PLAN EXCERPT  
Scale: See Graphic Scale

CANOPY TREES									
ITEM NUMBER	SYM.	QTY.	BOTANICAL NAME	COMMON NAME	UNIT	CONT.	SIZE	HEIGHT	REMARKS
-	-	-	-	-	-	-	-	-	MATCHED
SHRUBS									
802-03.01	FO	9	Forsythia	FORSYTHIA	EACH	POT	3 GAL	-	-
802-03.03	BB	9	Euonymus alatus	BURNING BUSH	EACH	POT	7 GAL	-	-
MULCH									
805-01.68	-	8	n/a	MULCH	CY	-	-	-	-
802-04.70	DY	2025	-	DAY LILY MIX	EA.	POT	1 GAL	-	-

PLANTING SCHEDULE

ITEM	JAN.	FEB.	MAR.	APR.	MAY	JUN.	JUL.	AUG.	SEPT.	OCT.	NOV.	DEC.
ALL TREE PLANTINGS												

TYPE	YEAR	PROJECT NO.	SHEET NO.
STATE #	11	82LPLM-F3-009	4
FEDERAL #	11	STP-EN-9108(42)	4

**GENERAL NOTES:**

- UNDERGROUND UTILITIES:  
A. UNDERGROUND UTILITIES HAVE NOT BEEN VERIFIED BY THE OWNER, LANDSCAPE ARCHITECT, OR THEIR REPRESENTATIVES. BEFORE YOU DIG CALL TENNESSEE ONE CALL SYSTEM - 1-800-351-1111.
- THE CONTRACTOR SHALL DETERMINE THE EXACT LOCATION OF ALL EXISTING UTILITIES BEFORE COMMENCING WORK AND AGREES TO BE RESPONSIBLE FOR ANY AND ALL DAMAGES WHICH MIGHT RESULT FROM THE CONTRACTOR'S FAILURE TO EXACTLY LOCATE AND PRESERVE ANY UNDERGROUND UTILITIES TO REMAIN.
- THE CONTRACTOR SHALL VERIFY EXISTING CONDITIONS TO ENSURE THAT THE NEW WORK SHALL FIT INTO THE EXISTING SITE IN THE MANNER INTENDED AND AS SHOWN ON THE DRAWINGS. SHOULD ANY CONDITIONS EXIST THAT ARE CONTRARY TO THOSE ON THE DRAWINGS, THE CONTRACTOR SHALL NOTIFY THE OWNER'S REPRESENTATIVE PRIOR TO PERFORMING ANY WORK IN THE AREA INVOLVING DIFFERENCES. NOTIFICATION SHALL BE MADE IN THE FORM OF A DRAWING OR SKETCH INDICATING FIELD MEASUREMENTS AND NOTES RELATING TO THE AREA.
- THE LANDSCAPE CONTRACTOR WILL BE HELD FINANCIALLY LIABLE FOR ANY DAMAGE CAUSED TO NEW PAVEMENT, CURBING, OR OTHER COMPLETED CONSTRUCTION ITEMS INCURRED DURING THE LANDSCAPE INSTALLATION.
- THE LANDSCAPE CONTRACTOR IS TO PERFORM A THOROUGH CLEANUP AND QUALITY CONTROL INSPECTION.
- THE LANDSCAPE CONTRACTOR IS SUBJECT TO RANDOM INSPECTIONS BY TDOT OR A TDOT REPRESENTATIVE AT ANY TIME DURING THE INSTALLATION PROCESS. WORK NOT IN COMPLIANCE WITH PLANS WILL BE REMOVED AND BROUGHT INTO COMPLIANCE.

**LANDSCAPE NOTES:**

- PLANTING BEDS AND PLANT LOCATIONS SHALL BE STAKED BY THE LANDSCAPE CONTRACTOR. THE LANDSCAPE CONTRACTOR SHALL NOTIFY TDOT OR A TDOT REPRESENTATIVE FOR APPROVAL PRIOR TO INSTALLATION OF THE PLANTS.
- PLANTING BEDS SHALL BE CLEARED OF ALL GRASS AND WEEDS PRIOR TO INSTALLATION OF PLANTS, INCLUDING SPRAYING HERBICIDE TO KILL ACTIVELY GROWING PLANTS. PLANT BEDS SHALL BE PREPARED AS CALLED FOR IN PLANTING DETAILS AND AS NOTED ON PLANS.
- ALL OTHER DISTURBED AREAS ARE TO BE SEEDED AS PER THE PLANS ADDITIONAL SEEDING, IF REQUIRED, WILL BE AS DIRECTED BY TDOT OR A TDOT REPRESENTATIVE.
- PLANTING BEDS SHALL HAVE A THREE (3) INCH SHREDDED HARDWOOD BARK MULCH OVER THE ENTIRE BED, UNLESS OTHERWISE NOTED ON THE DRAWINGS.
- PRIOR TO PLANTING, ALL MULCH TREE RINGS SHALL BE TREATED WITH A WATER-SOLUBLE HERBICIDE FOR THE NON-SELECTIVE CONTROL OF ANNUAL AND PERENNIAL WEEDS PRIOR TO PLANTING.
- ALL TREE PLANTING PITS SHALL BE BACKFILLED WITH A PLANTING SOIL MIXTURE OF 50% ORIGINAL SOIL AND 50% TOPSOIL, THOROUGHLY MIXED. SAMPLE OF MIXTURE TO BE APPROVED BY TDOT OR A TDOT REPRESENTATIVE PRIOR TO INSTALLATION.
- ALL PLANTED AREAS ARE TO BE FERTILIZED WITH GRANULAR FERTILIZER LANDSCAPE CONTRACTOR IS TO PROVIDE SOIL TEST RESULTS AND PROPOSED FERTILIZER APPLICATION RATES TO TDOT OR A TDOT REPRESENTATIVE FOR APPROVAL. SOIL TEST SAMPLES SHALL BE TAKEN 1000 FEET O.C. ON BOTH SIDES OF THE SUBMITTING SOIL TEST SAMPLE.
- ALL PLANT MATERIAL IS TO BE NURSERY GROWN AND TO COMPLY WITH AMERICAN STANDARD FOR NURSERY STOCK
- SPRAY TREES WITH AN ANTI-DESICCANT IF FOLIAGE IS PRESENT.
- EVERGREEN TREES SHALL BE PLANTED IN THE SAME MANNER AS DECIDUOUS MATERIAL IS PLANTED.
- DO NOT PRUNE ANY PLANT MATERIAL UNTIL IT HAS BEEN INSPECTED AND ACCEPTED BY TDOT OR A TDOT REPRESENTATIVE.
- ALL LANDSCAPE MATERIAL SHALL BE APPROVED BY TDOT OR A TDOT REPRESENTATIVE CONTRACTOR'S HOLDING SITE OR AT THIS SITE. IT SHALL BE THE RESPONSIBILITY OF THE LANDSCAPE CONTRACTOR TO NOTIFY TDOT OR A TDOT REPRESENTATIVE OF THE AVAILABILITY OF THE MATERIALS TO BE INSPECTED.
- ALL MATERIALS INSPECTED ON THE SITE AND FOUND TO BE UNACCEPTABLE SHALL BE REMOVED FROM THE SITE ON THE DAY OF INSPECTION.
- FIELD CHANGES MUST BE APPROVED IN WRITING BY TDOT OR A TDOT REPRESENTATIVE BEFORE INSTALLATION. MATERIALS MAY BE VIEWED AT LANDSCAPE
- EXISTING PLANT MATERIAL IS TO BE EVALUATED BY THE LANDSCAPE ARCHITECT FOR POSSIBLE RELOCATION ON SITE. THE LANDSCAPE CONTRACTOR IS TO NOTIFY THE LANDSCAPE ARCHITECT FORTY-EIGHT (48) HOURS BEFORE BEGINNING WORK.
- ALL PLANT MATERIAL SHALL BE SUPPLIED BY APPROPRIATE SOURCES TO PREVENT UNDUE STRESS OR PROLONGED ACCLIMATIZATION WHICH WOULD INHIBIT PLANT GROWTH.
- LANDSCAPE CONTRACTOR IS TO VERIFY PLANT QUANTITIES SHOWN ON PLAN AND IN PLANT LIST. IF DISCREPANCIES OCCUR, LANDSCAPE CONTRACTOR IS TO CONTACT LANDSCAPE ARCHITECT IMMEDIATELY. QUANTITIES SHOWN ON PLAN TAKE PRECEDENCE.
- REFER TO PLANTING SCHEDULE FOR ACCEPTABLE TIMES FOR INSTALLING PLANT MATERIALS.

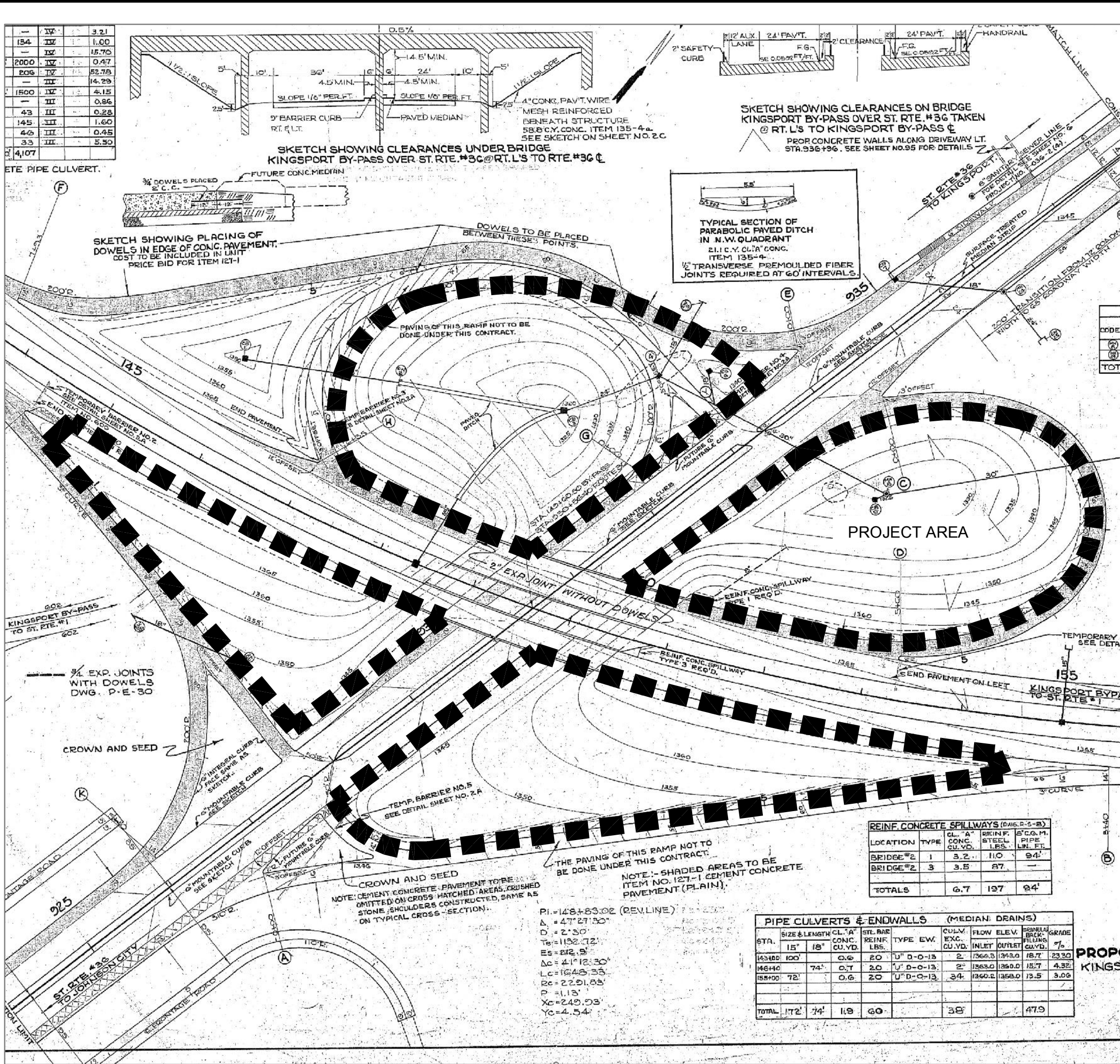
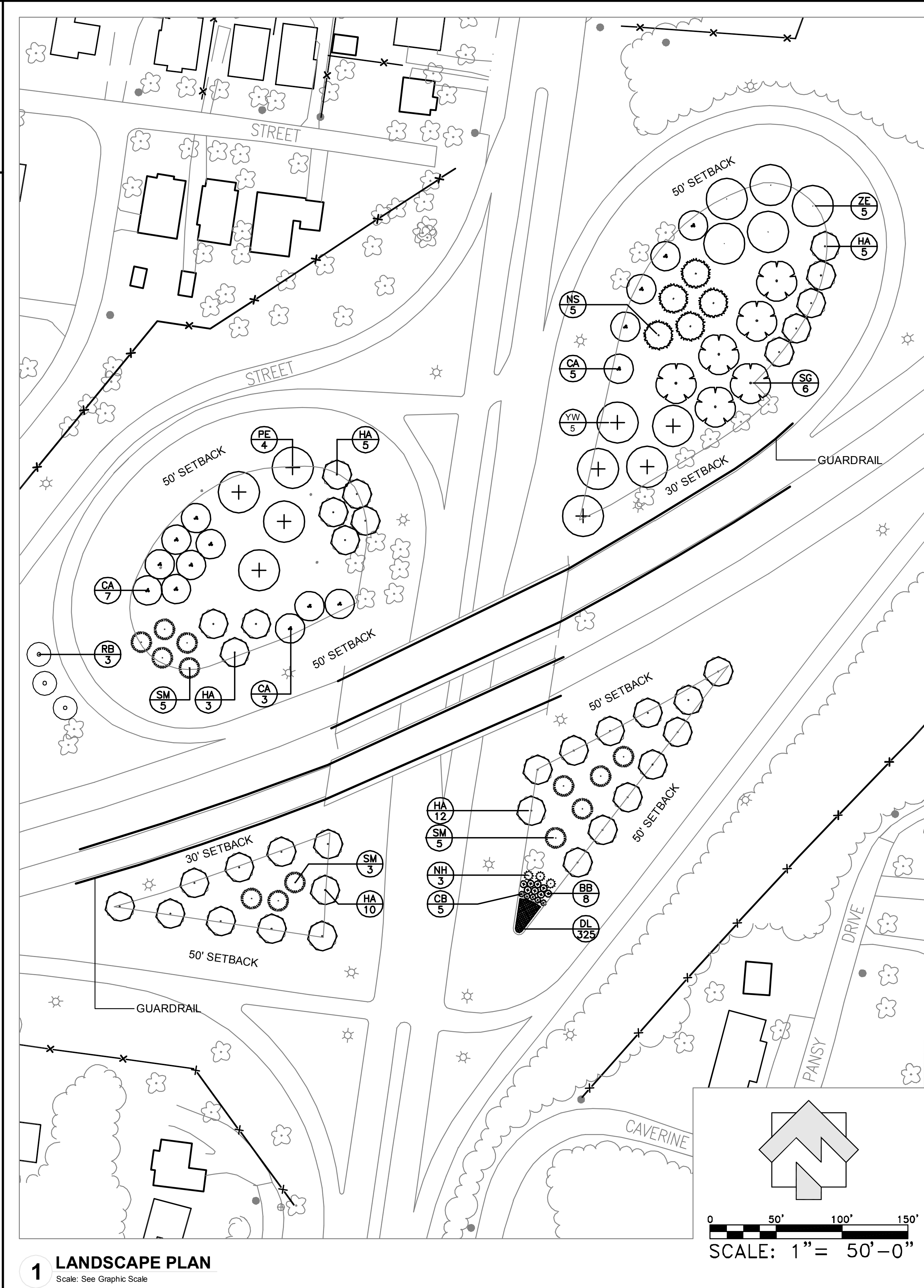


TENNESSEE  
ONE-CALL  
SYSTEM BEFORE  
YOU DIG CALL  
1-800-351-1111

DATE: DECEMBER 10, 2012

LANDSCAPE  
PLAN  
(Site 4)





2 TDOT RIGHT OF WAY PLAN EXCERPT

CANOPY TREES									
ITEM NUMBER	SYM.	QTY.	BOTANICAL NAME	COMMON NAME	UNIT	CONT.	SIZE	HEIGHT	REMARKS
802-01.11	CA	15	<i>Malus augustifolia</i>	CRABAPPLE	EACH	B&B	1.5"-2" CAL	-	MATCHED
802-01.18	NS	5	<i>Picea Abies</i>	NORWAY SPRUCE	EACH	B&B	1.5"-2" CAL	-	MATCHED
802-01.12	HA	35	<i>Rhapholepis Indica</i>	INDIAN HAWTHORN	EACH	B&B	1.5"-2" CAL	-	MATCHED
802-01.14	PE	4	<i>Ulmus Americana 'Princeton'</i>	PRINCETON ELM	EACH	B&B	1.5"-2" CAL	-	MATCHED
802-01.03	RB	3	<i>Cercis canadensis</i>	REDBUD	EACH	B&B	1.5"-2" CAL	-	MATCHED
802-01.15	SM	13	<i>Magnolia virginiana</i>	SWEETBAY MAGNOLIA	EACH	B&B	1.5"-2" CAL	-	MATCHED
802-01.16	ZE	5	<i>Zelcova serata</i>	ZELCOVA	EACH	B&B	1.5"-2" CAL	-	MATCHED
802-01.17	YW	5	<i>Cladrastis lutea</i>	YELLOW WOOD	EACH	B&B	1.5"-2" CAL	-	MATCHED
802-01.07	SG	6	<i>Liquidambar styraciflua</i>	SWEET GUM	EACH	B&B	1.5"-2" CAL	-	MATCHED
SHRUBS									
802-03.02	NH	3	<i>Ilex x 'nelliie r. stevens'</i>	NELLIE STEVENS HOLLY	EACH	POT	7 GAL	-	-
802-03.04	CB	5	<i>Berberis thunbergii 'Crimson pygmy'</i>	CRIMSON PIGMY BARBERRY	EACH	POT	3 GAL	-	-
802-03.03	BB	8	<i>Euonymus alatus</i>	BURNING BUSH	EACH	POT	7 GAL	-	-
802-04.70	DY	325	-	DAY LILY MIX					
MULCH									
805-01.68	-	15	n/a	MULCH	CY	-	-	-	-

PLANTING SCHEDULE												
ITEM	JAN.	FEB.	MAR.	APR.	MAY	JUN.	JUL.	AUG.	SEPT.	OCT.	NOV.	DEC.
ALL TREE PLANTINGS												

TYPE	YEAR	PROJECT NO.	SHEET NO.
STATE #	11	82LPLM-F3-009	5
FEDERAL #	11	STP-EN-9108(42)	5

- GENERAL NOTES:**
- UNDERGROUND UTILITIES:  
A. UNDERGROUND UTILITIES HAVE NOT BEEN VERIFIED BY THE OWNER, LANDSCAPE ARCHITECT, OR THEIR REPRESENTATIVES. BEFORE YOU DIG CALL TENNESSEE ONE CALL SYSTEM - 1-800-351-1111.
  - B. THE CONTRACTOR SHALL DETERMINE THE EXACT LOCATION OF ALL EXISTING UTILITIES BEFORE COMMENCING WORK AND AGREES TO BE RESPONSIBLE FOR ANY AND ALL DAMAGES WHICH MIGHT RESULT FROM THE CONTRACTOR'S FAILURE TO EXACTLY LOCATE AND PRESERVE ANY UNDERGROUND UTILITIES TO REMAIN.
  2. THE CONTRACTOR SHALL VERIFY EXISTING CONDITIONS TO ENSURE THAT THE NEW WORK SHALL FIT INTO THE EXISTING SITE IN THE MANNER INTENDED AND AS SHOWN ON THE DRAWINGS. SHOULD ANY CONDITIONS EXIST THAT ARE CONTRARY TO THOSE ON THE DRAWINGS, THE CONTRACTOR SHALL NOTIFY THE OWNER'S REPRESENTATIVE PRIOR TO PERFORMING ANY WORK IN THE AREA INVOLVING DIFFERENCES. NOTIFICATION SHALL BE MADE IN THE FORM OF A DRAWING OR SKETCH INDICATING FIELD MEASUREMENTS AND NOTES RELATING TO THE AREA.
  4. THE LANDSCAPE CONTRACTOR OR WILL BE HELD FINANCIALLY LIABLE FOR ANY DAMAGE CAUSED TO NEW PAVEMENT, CURBING, OR OTHER COMPLETED CONSTRUCTION ITEMS INCURRED DURING THE LANDSCAPE INSTALLATION.
  5. THE LANDSCAPE CONTRACTOR IS TO PERFORM A THOROUGH CLEANUP AND QUALITY CONTROL INSPECTION.
  6. THE LANDSCAPE CONTRACTOR IS SUBJECT TO RANDOM INSPECTIONS BY TDOT OR A TDOT REPRESENTATIVE AT ANY TIME DURING THE INSTALLATION PROCESS. WORK NOT IN COMPLIANCE WITH PLANS WILL BE REMOVED AND BROUGHT INTO COMPLIANCE.

- LANDSCAPE NOTES:**
1. PLANTING BEDS AND PLANT LOCATIONS SHALL BE STAKED BY THE LANDSCAPE CONTRACTOR. THE LANDSCAPE CONTRACTOR SHALL NOTIFY TDOT OR A TDOT REPRESENTATIVE FOR APPROVAL PRIOR TO INSTALLATION OF THE PLANTS.
  2. PLANTING BEDS SHALL BE CLEARED OF ALL GRASS AND WEEDS PRIOR TO INSTALLATION OF PLANTS, INCLUDING SPRAYING HERBICIDE TO KILL ACTIVELY GROWING PLANTS. PLANT BEDS SHALL BE PREPARED AS CALLED FOR IN PLANTING DETAILS AND AS NOTED ON PLANS.
  3. ALL OTHER DISTURBED AREAS ARE TO BE SEEDED AS PER THE PLANS ADDITIONAL SEEDING, IF REQUIRED, WILL BE AS DIRECTED BY TDOT OR A TDOT REPRESENTATIVE.
  4. PLANTING BEDS SHALL HAVE A THREE (3) INCH SHREDDED HARDWOOD BARK MULCH OVER THE ENTIRE BED, UNLESS OTHERWISE NOTED ON THE DRAWINGS.
  5. PRIOR TO PLANTING, ALL MULCH TREE RINGS SHALL BE TREATED WITH A WATER-SOLUBLE HERBICIDE FOR THE NON-SELECTIVE CONTROL OF ANNUAL AND PERENNIAL WEEDS PRIOR TO PLANTING.
  6. ALL TREE PLANTING PITS SHALL BE BACKFILLED WITH A PLANTING SOIL MIXTURE OF 50% ORIGINAL SOIL AND 50% TOPSOIL, THOROUGHLY MIXED. SAMPLE OF MIXTURE TO BE APPROVED BY TDOT OR A TDOT REPRESENTATIVE PRIOR TO INSTALLATION.
  7. ALL PLANTED AREAS ARE TO BE FERTILIZED WITH GRANULAR FERTILIZER LANDSCAPE CONTRACTOR IS TO PROVIDE SOIL TEST RESULTS AND PROPOSED. FERTILIZER APPLICATION RATES TO TDOT OR A TDOT REPRESENTATIVE FOR APPROVAL. SOIL TEST SAMPLES SHALL BE TAKEN 1000 FEET O.C. ON BOTH SIDES OF THE SUBMITTING SOIL TEST SAMPLE.
  8. ALL PLANT MATERIAL IS TO BE NURSERY GROWN AND TO COMPLY WITH AMERICAN STANDARD FOR NURSERY STOCK
  9. SPRAY TREES WITH AN ANTI-DESICCANT IF FOLIAGE IS PRESENT.
  10. EVERGREEN TREES SHALL BE PLANTED IN THE SAME MANNER AS DECIDUOUS MATERIAL IS PLANTED.
  11. DO NOT PRUNE ANY PLANT MATERIAL UNTIL IT HAS BEEN INSPECTED AND ACCEPTED BY TDOT OR A TDOT REPRESENTATIVE.
  12. ALL LANDSCAPE MATERIAL SHALL BE APPROVED BY TDOT OR A TDOT REPRESENTATIVE CONTRACTOR'S HOLDING SITE OR AT THIS SITE. IT SHALL BE THE RESPONSIBILITY OF THE LANDSCAPE CONTRACTOR TO NOTIFY TDOT OR A TDOT REPRESENTATIVE OF THE AVAILABILITY OF THE MATERIALS TO BE INSPECTED.
  13. ALL MATERIALS INSPECTED ON THE SITE AND FOUND TO BE UNACCEPTABLE SHALL BE REMOVED FROM THE SITE ON THE DAY OF INSPECTION.
  14. FIELD CHANGES MUST BE APPROVED IN WRITING BY TDOT OR A TDOT REPRESENTATIVE BEFORE INSTALLATION. MATERIALS MAY BE VIEWED AT LANDSCAPE
  15. EXISTING PLANT MATERIAL IS TO BE EVALUATED BY THE LANDSCAPE ARCHITECT FOR POSSIBLE RELOCATION ON SITE. THE LANDSCAPE CONTRACTOR IS TO NOTIFY THE LANDSCAPE ARCHITECT FORTY- EIGHT (48) HOURS BEFORE BEGINNING WORK.
  16. ALL PLANT MATERIAL SHALL BE SUPPLIED BY APPROPRIATE SOURCES TO PREVENT UNDUE STRESS OR PROLONGED ACCLIMATIZATION WHICH WOULD INHIBIT PLANT GROWTH.
  17. LANDSCAPE CONTRACTOR IS TO VERIFY PLANT QUANTITIES SHOWN ON PLAN AND IN PLANT LIST. IF DISCREPANCIES OCCUR, LANDSCAPE CONTRACTOR IS TO CONTACT LANDSCAPE ARCHITECT IMMEDIATELY. QUANTITIES SHOWN ON PLAN TAKE PRECEDENCE.
  18. REFER TO PLANTING SCHEDULE FOR ACCEPTABLE TIMES FOR INSTALLING PLANT MATERIALS.



**TENNESSEE ONE-CALL**  
SYSTEM BEFORE  
YOU DIG CALL  
1-800-351-1111



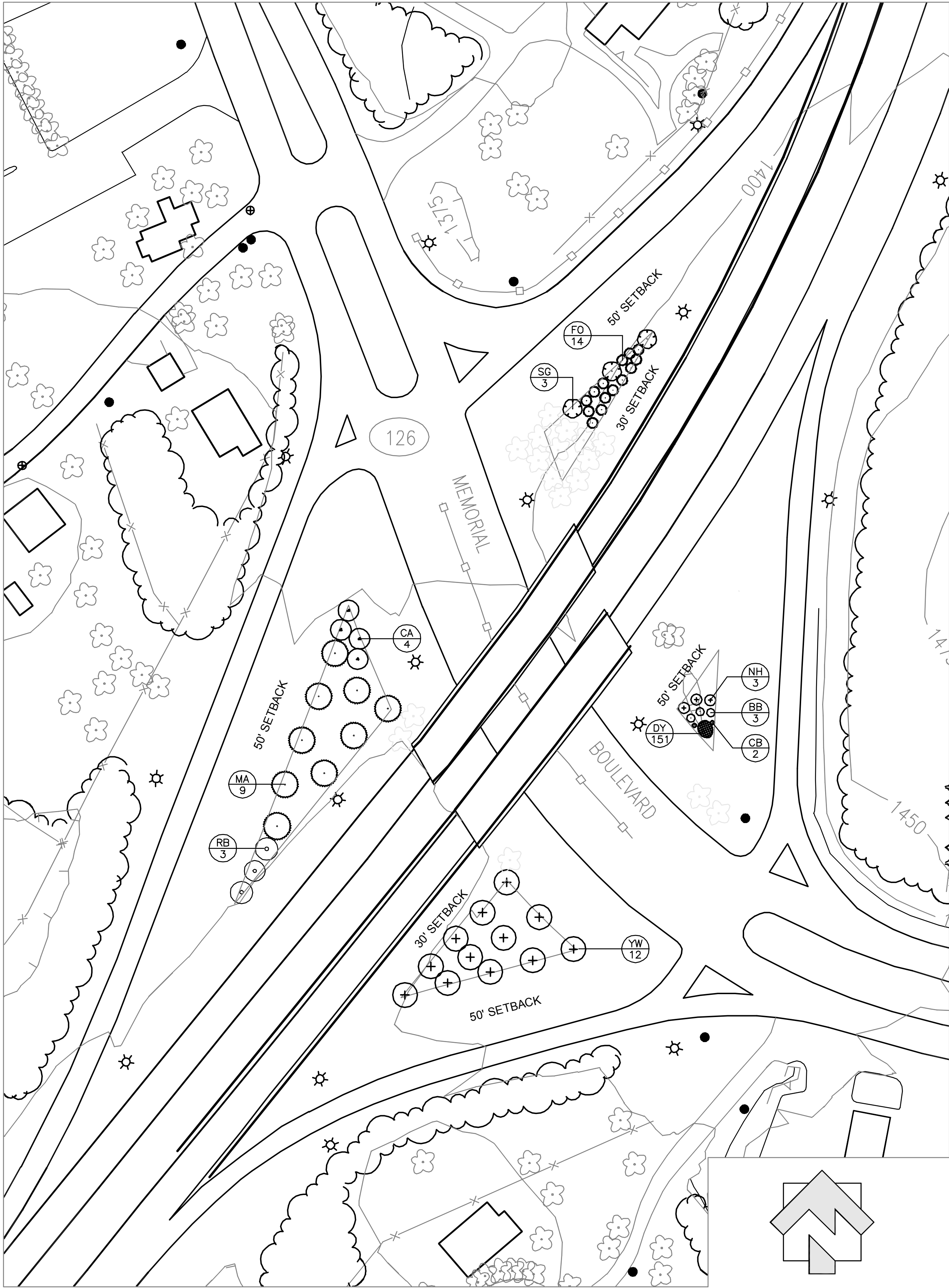
**LOSE & ASSOCIATES, INC.**  
LANDSCAPE ARCHITECTURE • ARCHITECTURE • ENGINEERING  
1514 5th Avenue North Suite 200 Nashville, TN 37208 615.242.0040

DATE: JULY 17, 2012

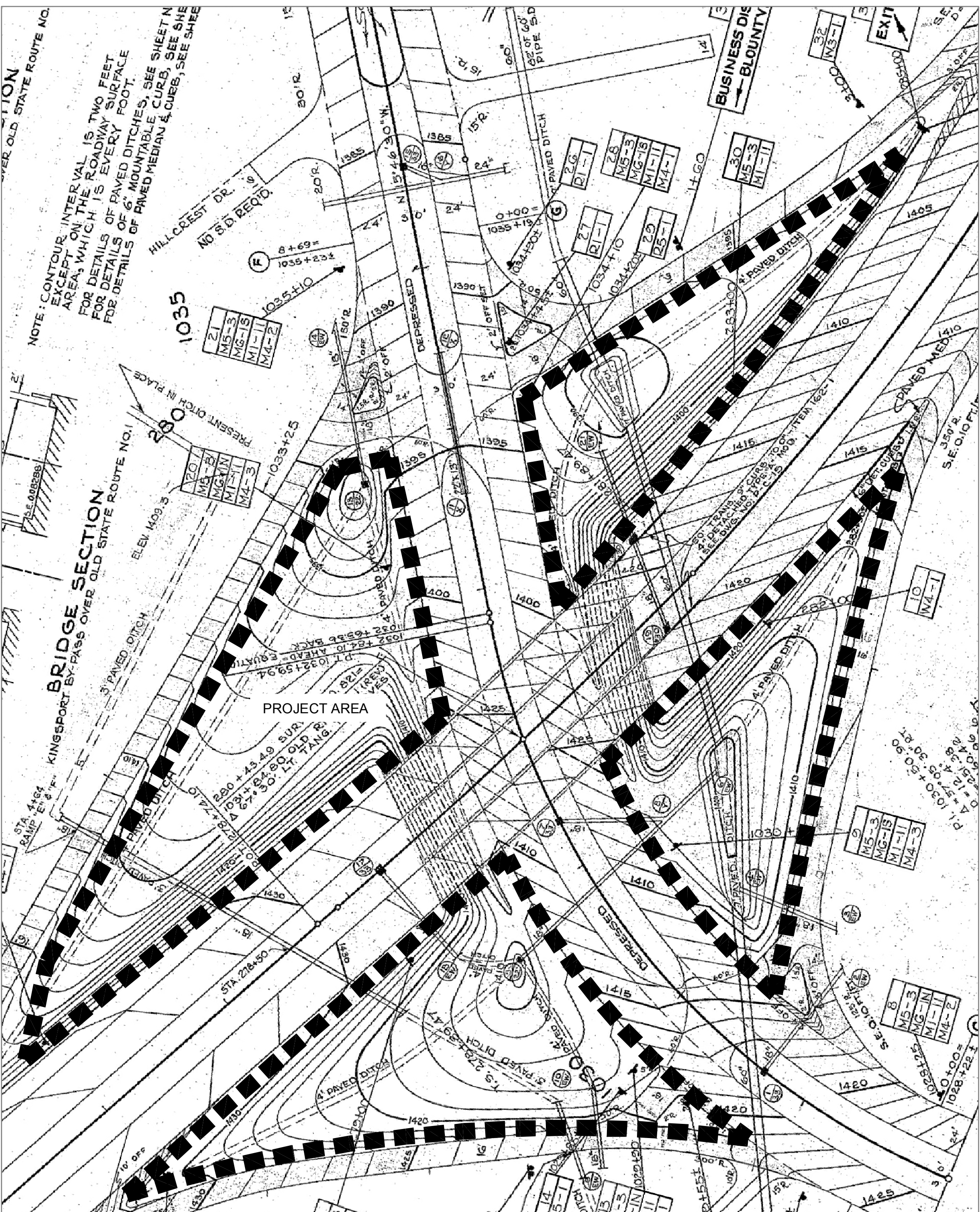
**LANDSCAPE PLAN**  
**(Site 5)**

SCALE: 1"=4'





1 LANDSCAPE PLAN  
Scale: See Graphic Scale



2 TDOT RIGHT OF WAY PLAN EXCERPT  
Scale: See Graphic Scale

QUANTITIES									
CANOPY TREES									
ITEM NUMBER	SYM.	QTY.	BOTANICAL NAME	COMMON NAME	UNIT	CONT.	SIZE	HEIGHT	REMARKS
802-01.11	CA	4	<i>Malus augustifolia</i>	CRABAPPLE	EACH	B&B	1.5"-2" CAL	-	MATCHED
802-01.04	MA	9	<i>Acer rubrum</i>	RED MAPLE	EACH	B&B	1.5"-2" CAL	-	MATCHED
802-01.03	RB	3	<i>Cercis canadensis</i>	REDBUD	EACH	POT	1.5"-2" CAL	-	MATCHED
802-01.07	SG	3	<i>Liquidambar styraciflua</i>	SWEET GUM	EACH	B&B	1.5"-2" CAL	-	MATCHED
802-01.17	YW	12	<i>Cladrastis lutea</i>	YELLOW WOOD	EACH	B&B	1.5"-2" CAL	-	MATCHED
SHRUBS									
802-03.02	NH	3	<i>Ilex x 'nellie r. stevens'</i>	NELLIE STEVENS HOLLY	EACH	POT	7 GAL	-	-
802-03.04	CB	2	<i>Berberis thunbergii</i> 'Crimson pygmy'	CRIMSON PIGMY BARBERRY	EACH	POT	3 GAL	-	-
802-03.03	BB	3	<i>Euonymus alatus</i>	BURNING BUSH	EACH	POT	7 GAL	-	-
802-03.01	FO	14	<i>Forsythia</i>	FORSYTHIA	EACH	POT	7 GAL	-	-
802-04.70	DY	151	-	DAY LILY MIX	EACH	POT	1 GAL	-	-
MULCH									
805-01.68	-	6	n/a	MULCH	CY	-	-	-	-

PLANTING SCHEDULE												
ITEM	JAN.	FEB.	MAR.	APR.	MAY	JUN.	JUL.	AUG.	SEPT.	OCT.	NOV.	DEC.
ALL TREE PLANTINGS												

TYPE	YEAR	PROJECT NO.	SHEET NO.
STATE #	11	82LPLM-F3-009	6
FEDERAL #	11	STP-EN-9108(42)	6

- GENERAL NOTES:**
- UNDERGROUND UTILITIES:  
A. UNDERGROUND UTILITIES HAVE NOT BEEN VERIFIED BY THE OWNER, LANDSCAPE ARCHITECT, OR THEIR REPRESENTATIVES. BEFORE YOU DIG CALL TENNESSEE ONE CALL SYSTEM - 1-800-351-1111.
  - THE CONTRACTOR SHALL DETERMINE THE EXACT LOCATION OF ALL EXISTING UTILITIES BEFORE COMMENCING WORK AND AGREES TO BE RESPONSIBLE FOR ANY AND ALL DAMAGES WHICH MIGHT RESULT FROM THE CONTRACTOR'S FAILURE TO EXACTLY LOCATE AND PRESERVE ANY UNDERGROUND UTILITIES TO REMAIN.
  - THE CONTRACTOR SHALL VERIFY EXISTING CONDITIONS TO ENSURE THAT THE NEW WORK SHALL FIT INTO THE EXISTING SITE IN THE MANNER INTENDED AND AS SHOWN ON THE DRAWINGS. SHOULD ANY CONDITIONS EXIST THAT ARE CONTRARY TO THOSE ON THE DRAWINGS, THE CONTRACTOR SHALL NOTIFY THE OWNER'S REPRESENTATIVE PRIOR TO PERFORMING ANY WORK IN THE AREA INVOLVING DIFFERENCES. NOTIFICATION SHALL BE MADE IN THE FORM OF A DRAWING OR SKETCH INDICATING FIELD MEASUREMENTS AND NOTES RELATING TO THE AREA.
  - THE LANDSCAPE CONTRACTOR WILL BE HELD FINANCIALLY LIABLE FOR ANY DAMAGE CAUSED TO NEW PAVEMENT, CURBING, OR OTHER COMPLETED CONSTRUCTION ITEMS INCURRED DURING THE LANDSCAPE INSTALLATION.
  - THE LANDSCAPE CONTRACTOR IS TO PERFORM A THOROUGH CLEANUP AND QUALITY CONTROL INSPECTION.
  - THE LANDSCAPE CONTRACTOR IS SUBJECT TO RANDOM INSPECTIONS BY TDOT OR A TDOT REPRESENTATIVE AT ANY TIME DURING THE INSTALLATION PROCESS. WORK NOT IN COMPLIANCE WITH PLANS WILL BE REMOVED AND BROUGHT INTO COMPLIANCE.

- LANDSCAPE NOTES:**
- PLANTING BEDS AND PLANT LOCATIONS SHALL BE STAKED BY THE LANDSCAPE CONTRACTOR. THE LANDSCAPE CONTRACTOR SHALL NOTIFY TDOT OR A TDOT REPRESENTATIVE FOR APPROVAL PRIOR TO INSTALLATION OF THE PLANTS.
  - PLANTING BEDS SHALL BE CLEARED OF ALL GRASS AND WEEDS PRIOR TO INSTALLATION OF PLANTS, INCLUDING SPRAYING HERBICIDE TO KILL ACTIVELY GROWING PLANTS. PLANT BEDS SHALL BE PREPARED AS CALLED FOR IN PLANTING DETAILS AND AS NOTED ON PLANS.
  - ALL OTHER DISTURBED AREAS ARE TO BE SEEDED AS PER THE PLANS ADDITIONAL SEEDING, IF REQUIRED, WILL BE AS DIRECTED BY TDOT OR A TDOT REPRESENTATIVE.
  - PLANTING BEDS SHALL HAVE A THREE (3) INCH SHREDDED HARDWOOD BARK MULCH OVER THE ENTIRE BED, UNLESS OTHERWISE NOTED ON THE DRAWINGS.
  - PRIOR TO PLANTING, ALL MULCH TREE RINGS SHALL BE TREATED WITH A WATER-SOLUBLE HERBICIDE FOR THE NON-SELECTIVE CONTROL OF ANNUAL AND PERENNIAL WEEDS PRIOR TO PLANTING.
  - ALL TREE PLANTING PITS SHALL BE BACKFILLED WITH A PLANTING SOIL MIXTURE OF 50% ORIGINAL SOIL AND 50% TOPSOIL, THOROUGHLY MIXED. SAMPLE OF MIXTURE TO BE APPROVED BY TDOT OR A TDOT REPRESENTATIVE PRIOR TO INSTALLATION.
  - ALL PLANTED AREAS ARE TO BE FERTILIZED WITH GRANULAR FERTILIZER LANDSCAPE CONTRACTOR IS TO PROVIDE SOIL TEST RESULTS AND PROPOSED FERTILIZER APPLICATION RATES TO TDOT OR A TDOT REPRESENTATIVE FOR APPROVAL. SOIL TEST SAMPLES SHALL BE TAKEN 1000 FEET O.C. ON BOTH SIDES OF THE SUBMITTING SOIL TEST SAMPLE.
  - ALL PLANT MATERIAL IS TO BE NURSERY GROWN AND TO COMPLY WITH AMERICAN STANDARD FOR NURSERY STOCK
  - SPRAY TREES WITH AN ANTI-DESICCANT IF FOLIAGE IS PRESENT.
  - EVERGREEN TREES SHALL BE PLANTED IN THE SAME MANNER AS DECIDUOUS MATERIAL IS PLANTED.
  - DO NOT PRUNE ANY PLANT MATERIAL UNTIL IT HAS BEEN INSPECTED AND ACCEPTED BY TDOT OR A TDOT REPRESENTATIVE.
  - ALL LANDSCAPE MATERIAL SHALL BE APPROVED BY TDOT OR A TDOT REPRESENTATIVE CONTRACTOR'S HOLDING SITE OR AT THIS SITE. IT SHALL BE THE RESPONSIBILITY OF THE LANDSCAPE CONTRACTOR TO NOTIFY TDOT OR A TDOT REPRESENTATIVE OF THE AVAILABILITY OF THE MATERIALS TO BE INSPECTED.
  - ALL MATERIALS INSPECTED ON THE SITE AND FOUND TO BE UNACCEPTABLE SHALL BE REMOVED FROM THE SITE ON THE DAY OF INSPECTION.
  - FIELD CHANGES MUST BE APPROVED IN WRITING BY TDOT OR A TDOT REPRESENTATIVE BEFORE INSTALLATION. MATERIALS MAY BE VIEWED AT LANDSCAPE
  - EXISTING PLANT MATERIAL IS TO BE EVALUATED BY THE LANDSCAPE ARCHITECT FOR POSSIBLE RELOCATION ON SITE. THE LANDSCAPE CONTRACTOR IS TO NOTIFY THE LANDSCAPE ARCHITECT FORTY-EIGHT (48) HOURS BEFORE BEGINNING WORK.
  - ALL PLANT MATERIAL SHALL BE SUPPLIED BY APPROPRIATE SOURCES TO PREVENT UNDUE STRESS OR PROLONGED ACCLIMATIZATION WHICH WOULD INHIBIT PLANT GROWTH.
  - LANDSCAPE CONTRACTOR IS TO VERIFY PLANT QUANTITIES SHOWN ON PLAN AND IN PLANT LIST. IF DISCREPANCIES OCCUR, LANDSCAPE CONTRACTOR IS TO CONTACT LANDSCAPE ARCHITECT IMMEDIATELY. QUANTITIES SHOWN ON PLAN TAKE PRECEDENCE.
  - REFER TO PLANTING SCHEDULE FOR ACCEPTABLE TIMES FOR INSTALLING PLANT MATERIALS.



LOOSE & ASSOCIATES, INC.  
LANDSCAPE ARCHITECTURE • ARCHITECTURE • ENGINEERING  
1514 5th Avenue North Suite 200 Nashville, TN 37208 615.242.0040

DATE: JULY 17, 2012

LANDSCAPE PLAN  
(Site 6)