

6" COMBINED CURB AND GUTTER (6-30)

1. ALL NON-MOUNTABLE OR ROLLED CURB AND GUTTER TO BE 6" CONCRETE COMBINED CURB AND GUTTER TYPE 6-30.
2. PLEASE SEE TDOT STANDARD DRAWING RP-VC-10, LATEST REVISION FOR 6" CONCRETE COMBINED CURB AND GUTTER DETAILS.
3. CURB AND GUTTER AND SIDEWALK JOINTS SHALL ALIGN.

DETACHED CURB

1. PLEASE SEE TDOT STANDARD DRAWING RP-VC-10, LATEST REVISION FOR 6" CONCRETE DETACHED (NON-MOUNTABLE) CURB DETAILS.
2. CURB AND SIDEWALK JOINTS SHALL ALIGN.

DRAWING TITLE	SCALE	DRAWING NO.	REV.
CURB DETAILS - CURB AND GUTTER AND DETACHED	N. T. S.	A6.1	

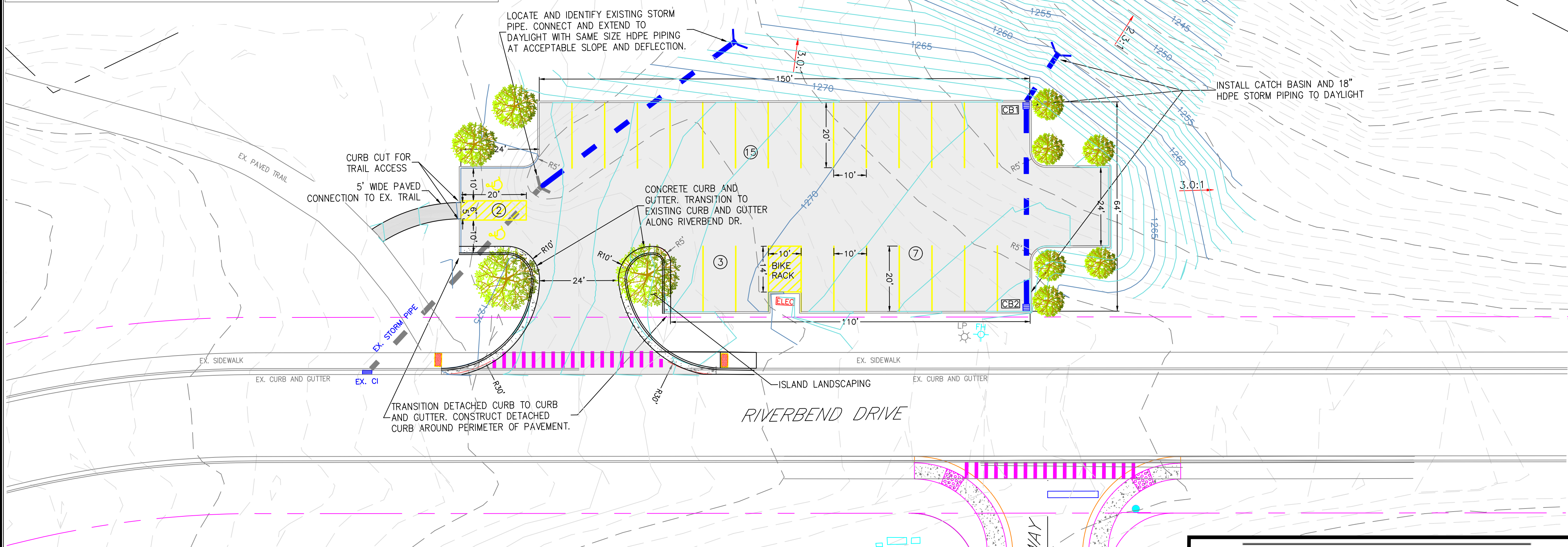
PLEASE SEE TDOT STANDARD MULTIMODAL DRAWINGS MM-CR-1 THROUGH MM-CR-9, LATEST REVISION FOR ADA COMPLIANT DETAILS. SEE LINK BELOW:

[HTTPS://WWW.TN.GOV/TDOT/ROADWAY-DESIGN/STANDARD-DRAWINGS-LIBRARY/STANDARD-ROADWAY-DRAWINGS/MULTIMODAL.HTML](https://www.tn.gov/TDOT/ROADWAY-DESIGN/STANDARD-DRAWINGS-LIBRARY/STANDARD-ROADWAY-DRAWINGS/MULTIMODAL.HTML)

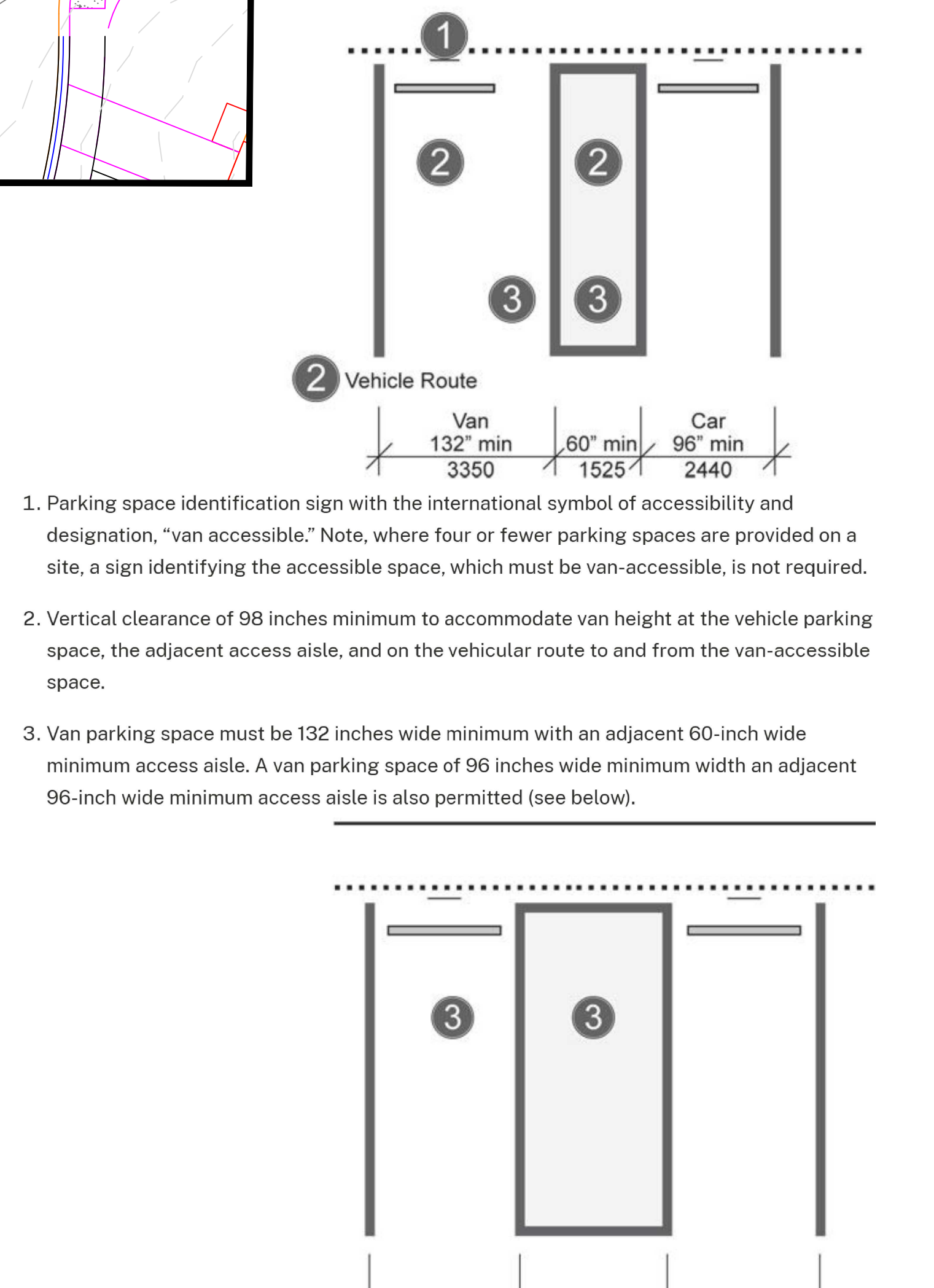
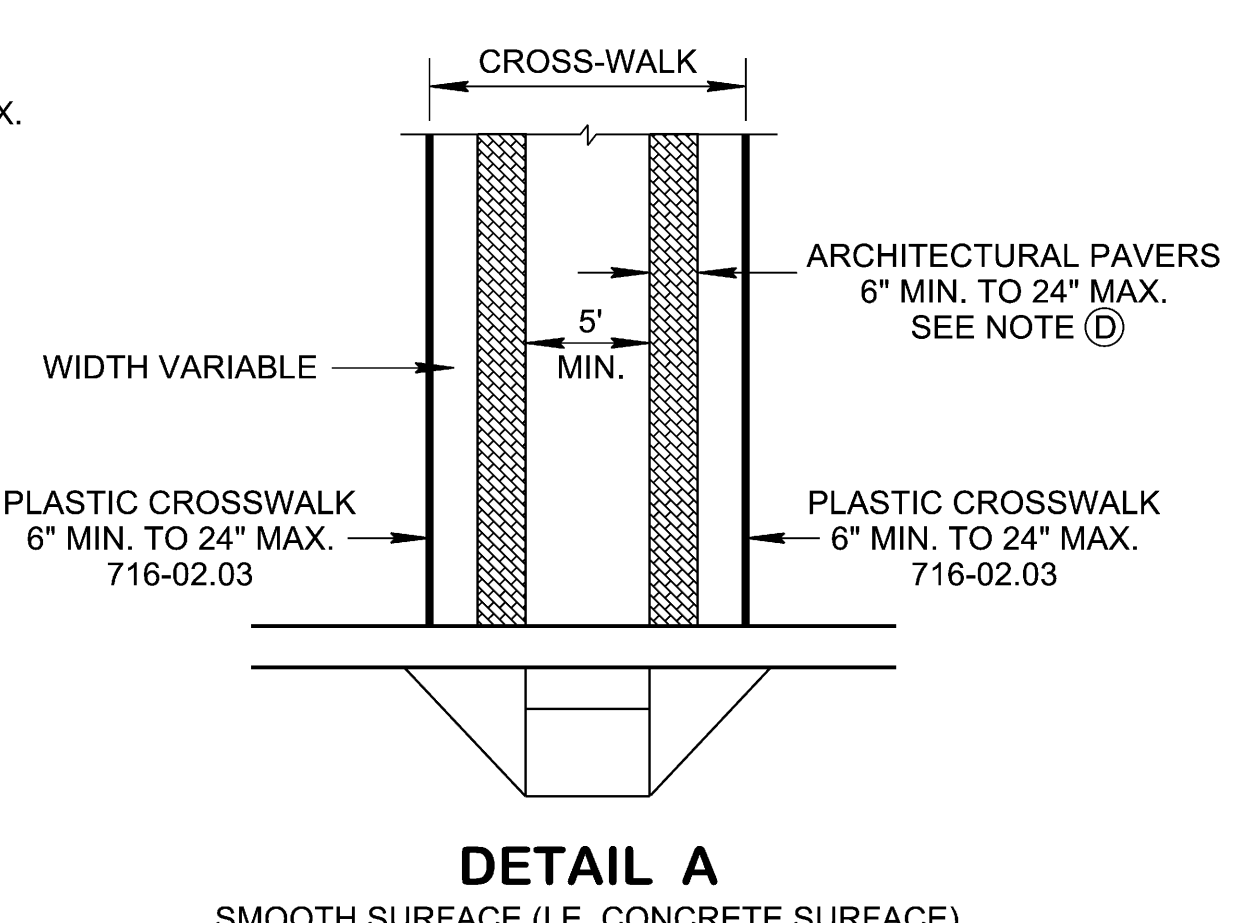
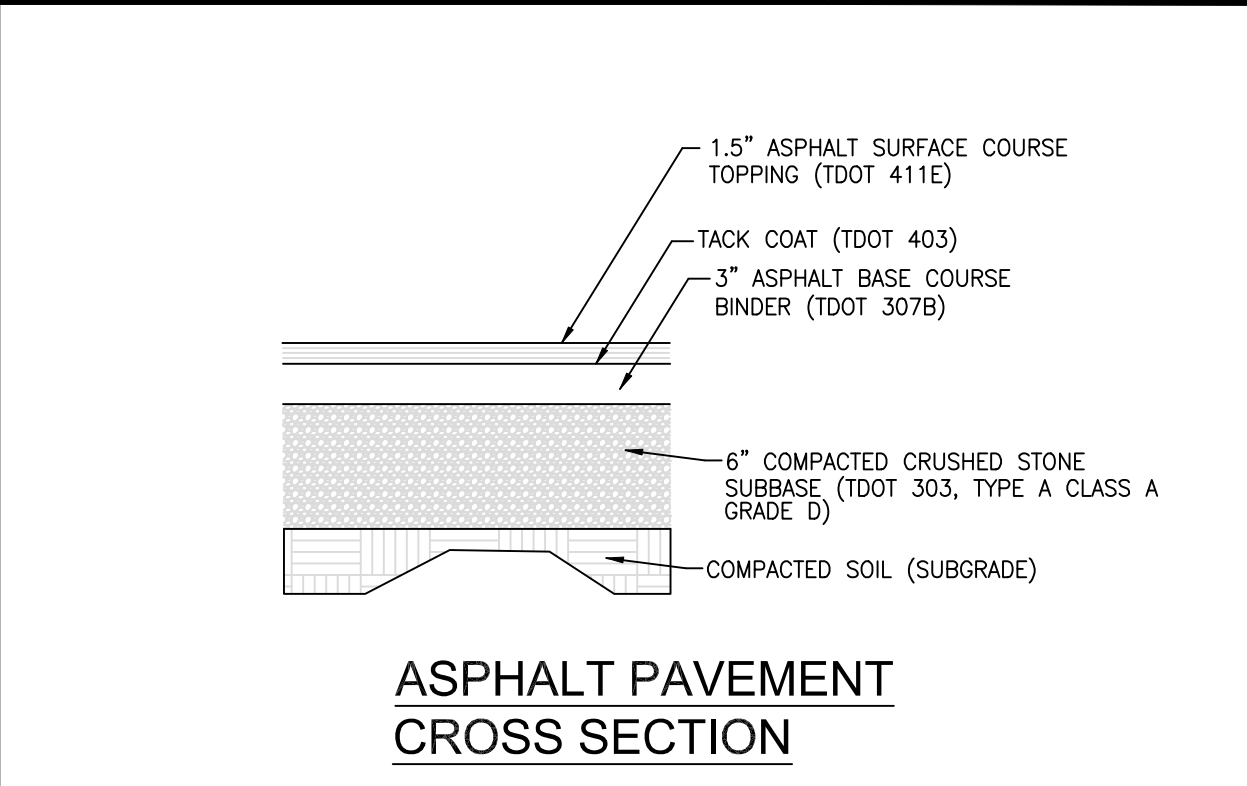
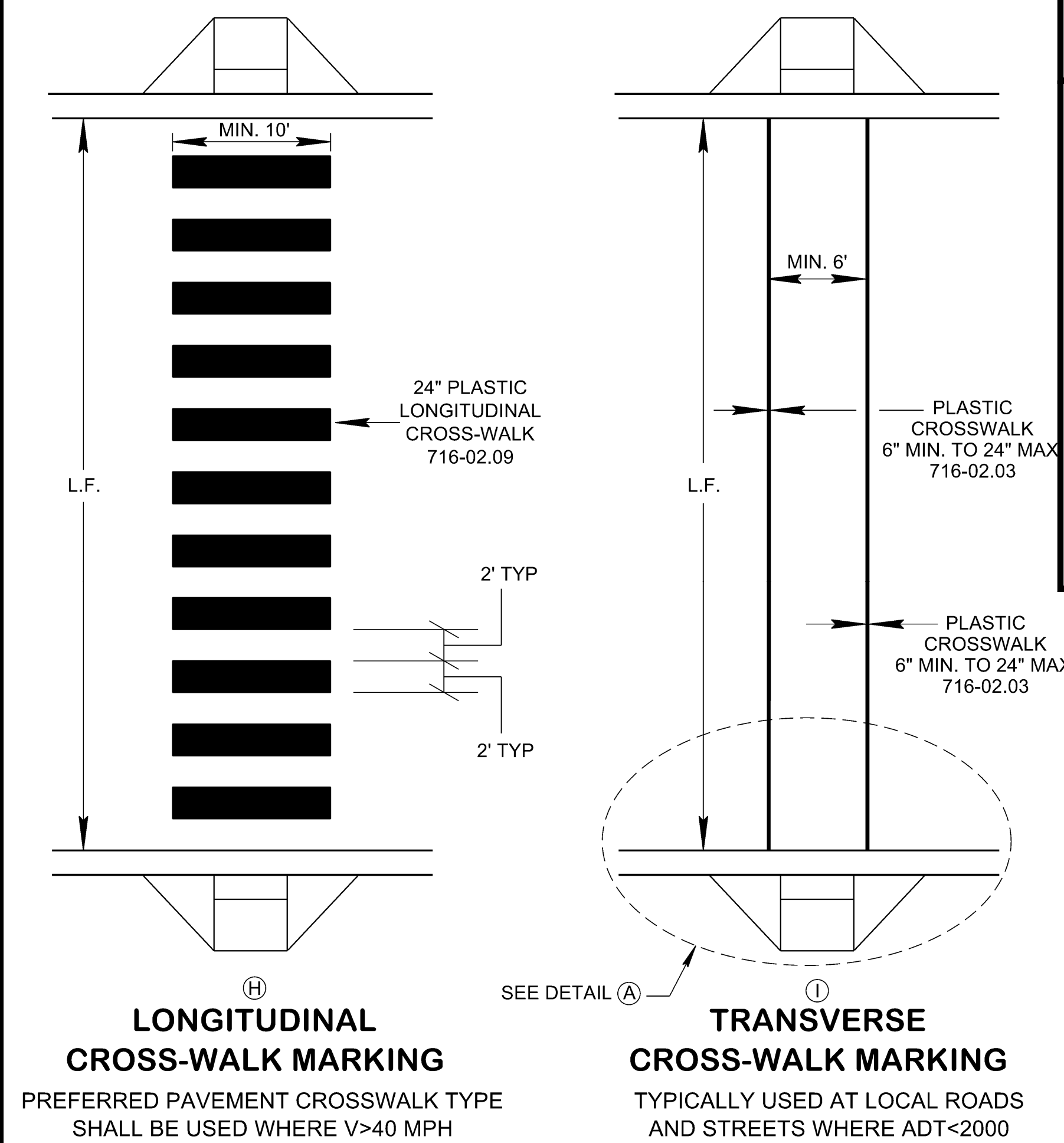
DRAWING TITLE	SCALE	DRAWING NO.	REV.
ADA COMPLIANT RAMP	N. T. S.	A7.3	3

Volumes by Triangulation (Prisms) Thu, Jul 11 2024 10:48:01 AM
 Existing Surface: C:\Carlson Projects\Riverbend\Riverbend surface.tin
 Final Surface: C:\Carlson Projects\Riverbend\Riverbend Dr parkinglot-fg.tin
 Cut volume: 1,077.6 C.F., 39.91 C.Y.
 Fill volume: 65,185.3 C.F., 2,414.27 C.Y.
 Area in Cut : 3,799.1 S.F., 0.09 Acres
 Area in Fill: 20,438.3 S.F., 0.47 Acres
 Total inclusion area: 24,271.4 S.F., 0.56 Acres
 Average Cut Depth: 0.28 feet
 Average Fill Depth: 3.19 feet
 Cut to Fill ratio: 0.02
 Import Volume: 2,374.4 C.Y.
 Elevation Change To Reach Balance: -2.641
 Volume Change Per .1 ft: 89.9 C.Y.

PRELIMINARY QUANTITIES
 27 TOTAL PARKING SPACES
 1,253 SY ASPHALT PAVEMENT
 15 SY TRAIL ACCESS PAVEMENT
 147 LF CURB AND GUTTER
 450 LF DETACHED CURB
 153 LF 18" HDPE STORM PIPE
 2 EA. CATCH BASIN
 9 EA. TREE - SIZE AND SPECIES FROM CITY OF KINGSPORT'S APPROVED PLANT LIST
 PERIMETER LANDSCAPING - 1 TREE PER 50 FEET OF PERIMETER. 428 L.F. PERIMETER = 9 TREES. PARKING AREAS OF MORE THAN 5,000 SQ.FT. REQUIRE 5% OF AREA TO BE ISLAND LANDSCAPING. 11,277 SQ.FT. X .05 = 564 (1 TREE/600 SQ.FT.) = 1 TREE.



PLAN VIEW



1. Parking space identification sign with the international symbol of accessibility and designation, "van accessible." Note, where four or fewer parking spaces are provided on a site, a sign identifying the accessible space, which must be van-accessible, is not required.
2. Vertical clearance of 98 inches minimum to accommodate van height at the vehicle parking space, the adjacent access aisle, and on the vehicular route to and from the van-accessible space.
3. Van parking space must be 132 inches wide minimum with an adjacent 60-inch wide minimum access aisle. A van parking space of 96 inches wide minimum with an adjacent 96-inch wide minimum access aisle is also permitted (see below).

NO.	DATE	REVISION

**PARKING LOT CONCEPT PLAN at
 RIVERBEND DRIVE**
 KINGSPORT, TENNESSEE



DATE:
 SHEET TITLE:
 PARKING LOT CONCEPT PLAN
 SHEET NUMBER:
C-1