

Bays Mtn Museum Grant:

Mission Statement:

The Bays Mountain Park Farmstead Museum is a haven where the present meets history. Nestled within the picturesque landscape of Bays Mountain Park and Planetarium Kingsport, Tennessee, the Farmstead museum's mission is to preserve and share the rich heritage of Bays Mountain and the surrounding region.

Rooted in a history that dates back generations, the museum serves as a tribute to the enduring spirit of homesteading and farming that has shaped the very fabric of this land. With a commitment to nature conservation, the museum strives to offer a window into sustainable practices of the past.

Visitors wandering through the exhibits uncover the stories of those who carved a life from the land, celebrating the ingenuity and resilience of our ancestors. The curated collection of farm relics, including plows, tools and home goods, offers a connection to the past, while vividly showcasing the evolution of agricultural practices in this rugged terrain.

Beyond being a repository of historical artifacts, the Bays Mountain Park Farmstead Museum stands as a beacon of education and tourism. The park invites visitors from near and far to explore the heart of Appalachian history, learn from the land, and gain a deeper appreciation for the cultural tapestry woven by generations past.

Through guided tours, interactive workshops, and engaging exhibitions, the museum aims to inspire a renewed sense of stewardship for our natural surroundings. The Farmstead museum promises an enriching experience that bridges the gap between the past and the modern world.

The legacy of Bays Mountain Park echoes a resounding call to safeguard our heritage, embrace sustainable practices, and foster a lasting bond between humans and the land we call home.

Description of Capital Maintenance or Improvement Project 2000 words:

Phase one awarded and underway. A proper drainage system is required due to the terrain and elevation of the cabin's location. This will prevent water intrusion into the building and protect the assets within. The drainage will also prevent mud and water accumulation providing a safer entrance for guests. The improvements will also allow for disabled parking onto a hard top surface with accessibility features to allow for access to both the main entrance and second floor of the exhibit.

Applying for phase 2, the cabin was assembled in 1988 without consideration of accessibility. To ensure that the Farmstead museum is accessible to visitors of all ages and abilities, steps are required to provide a more universal design and the overall experience of guests. Features such as a wheel chair lift, ADA bathroom, and entrances from a hard top surface will create a welcoming environment, allowing patrons to explore the museum grounds comfortably. Additionally, ADA access throughout the museum, ensures that everyone can immerse themselves in the wonders of history and nature without limitations.

How will this project further your organization's mission?\* 750 words

In 1988, the Bays Mountain Park built the Harry V. Steadman Mountain Heritage Farmstead Museum, with the goal of depicting the social and natural history and way of life for "People of the Bays." The goal of the Farmstead Museum is to show life as it was in rural Appalachia. The museum stands as a living testament to the grit and determination of the people of Bays Mountain. It honors community leader Harry V. Steadman's legacy, as well as all those who toiled at the earth upon the mountain to scratch out a living for their families.

Bays Mountain Park attracts over 200,000 visitors per year, but sadly not everyone can share in the same experience. Accessibility and a mountainous terrain make visiting the Farmstead museum unattainable for people with mobility issues. The park realizes its role and responsibility to the public by providing amenities that are equally accessible to all guests.

The suggested capital project will help preserve the Farmstead museum for future generations. Much needed upgrades are implicit to the future success of the museum and its programs. Accessibility for all, also honors the spirit and history of Bays Mountain Park and will allow everyone to learn of the Mountain's rich heritage.

Describe how you measure success:

Success will initially be measured by the successful completion of the capital improvements outlined in the grant application.

Secondly, the project's success will be gauged through metrics such as increased numbers of visitors, enhanced visitor satisfaction, and broader community engagement. By offering an inclusive space that caters to diverse audiences, the Farmstead Museum has the potential to attract an extensive range of visitors, fostering a sense of pride and ownership within the community.

## Farmstead Museum Capital Budget

### Phase Two Project Summary:

Funding from the Tennessee State Museum's Capital Maintenance and Improvement Grant is requested to further projects associated with the upgrades at the Bays Mountain Farmstead Museum.

As part of a larger \$366,500.00 project, phase one is pending completion which includes site work and paving for accessible parking. Phase two will consist of the installation of a lift chair to provide access to the 2<sup>nd</sup> floor of the museum. Finally, phase 3 will improve ADA accessibility at the Museum's restrooms.

The budget for the project are as follows:

Phase 2: HC Lift installation:	\$ 85,000.00
Phase 3: Restroom upgrades to ADA:	\$ 35,000.00
Total:	\$120,000.00

The City of Kingsport humbly requests funding of \$100,000 to move the Farmstead Museum project closer to completion.

Plans and drawings are included in this packet for your consideration.

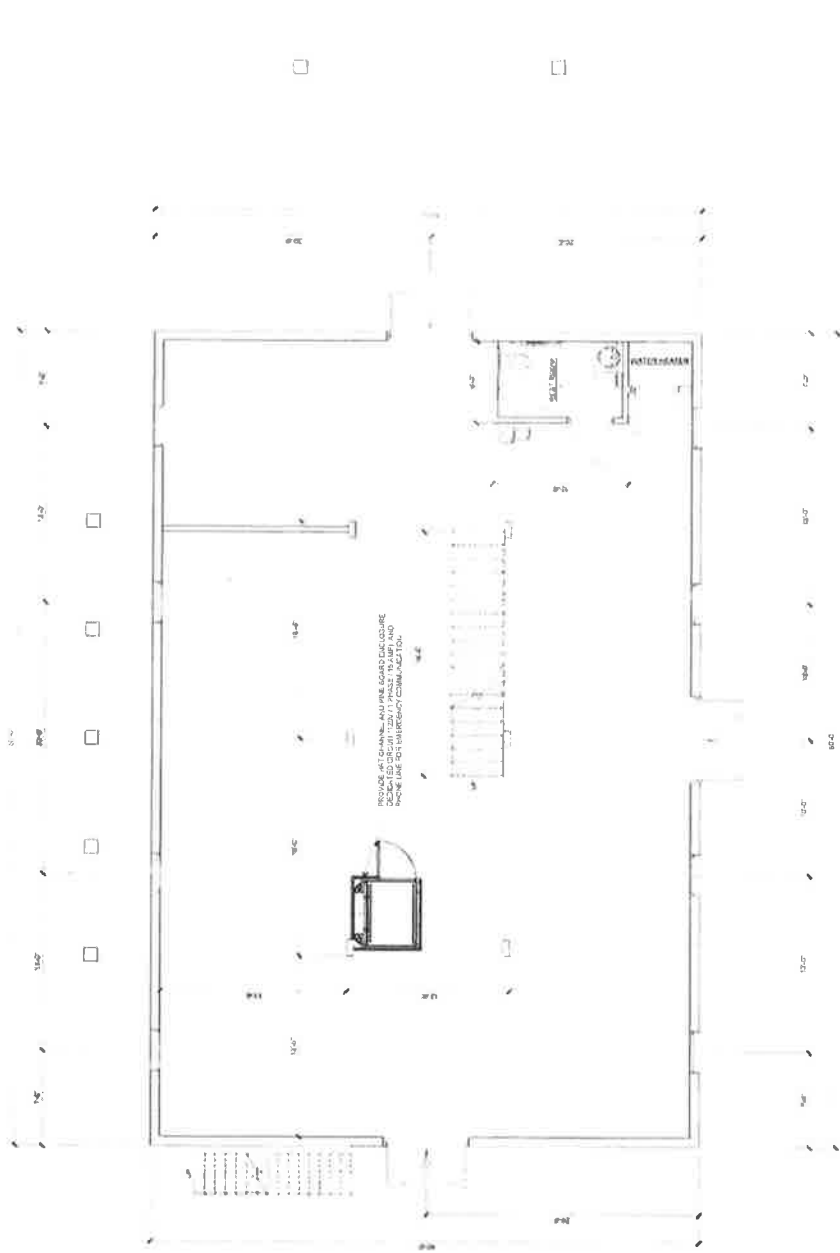
**LEGEND**

--- EXISTING WALL CONSTRUCTION TO REMAIN  
 --- NEW WALL CONSTRUCTION

DO NOT SCALE  
 DIMENSIONS  
 TO BE USED  
 FOR CONSTRUCTION

THE WALL TYPE INDICATES AUTOMATIC

**WALL TYPES**  
 SCALE: 1" = 1'-0"



**FIRST FLOOR PROPOSED PLAN**  
 SCALE: 1/4" = 1'-0"

**BAYS MOUNTAIN PARK FARMSTEAD MUSEUM**

SITE IMPROVEMENTS FOR

KINGSFORD, TENNESSEE

**Cain Rash West**

1330 Poplarville Pike, Da  
 King'sport, TN 37760  
 Phone: (603) 348-7700  
 Fax: (603) 348-7413  
 www.grain.com

1330 Poplarville Pike, Da  
 King'sport, TN 37760  
 Phone: (603) 348-7700  
 Fax: (603) 348-7413  
 www.grain.com

1330 Poplarville Pike, Da  
 King'sport, TN 37760  
 Phone: (603) 348-7700  
 Fax: (603) 348-7413  
 www.grain.com

1	1330 Poplarville Pike, Da	King'sport, TN 37760	Phone: (603) 348-7700	Fax: (603) 348-7413	www.grain.com
---	---------------------------	----------------------	-----------------------	---------------------	---------------

PRICING  
 PRINT  
 9/13/2023  
 NOT FOR  
 CONSTRUCTION

Checked: 9/13/2023  
 Name: [Blank]  
 Drawn: [Blank]  
 Project No.: 2023006

FIRST FLOOR  
 PROPOSED PLAN

**A-11**

SITE IMPROVEMENTS FOR  
**BAYS MOUNTAIN PARK  
 FARMSTEAD MUSEUM**  
 KINGSFORD, TENNESSEE

**Cain  
 Rash  
 West**  
 1300 Regional Park Dr.  
 Kingsport, TN 37602  
 Phone: (423) 346-7780  
 Fax: (423) 346-7413  
 www.crcw.com

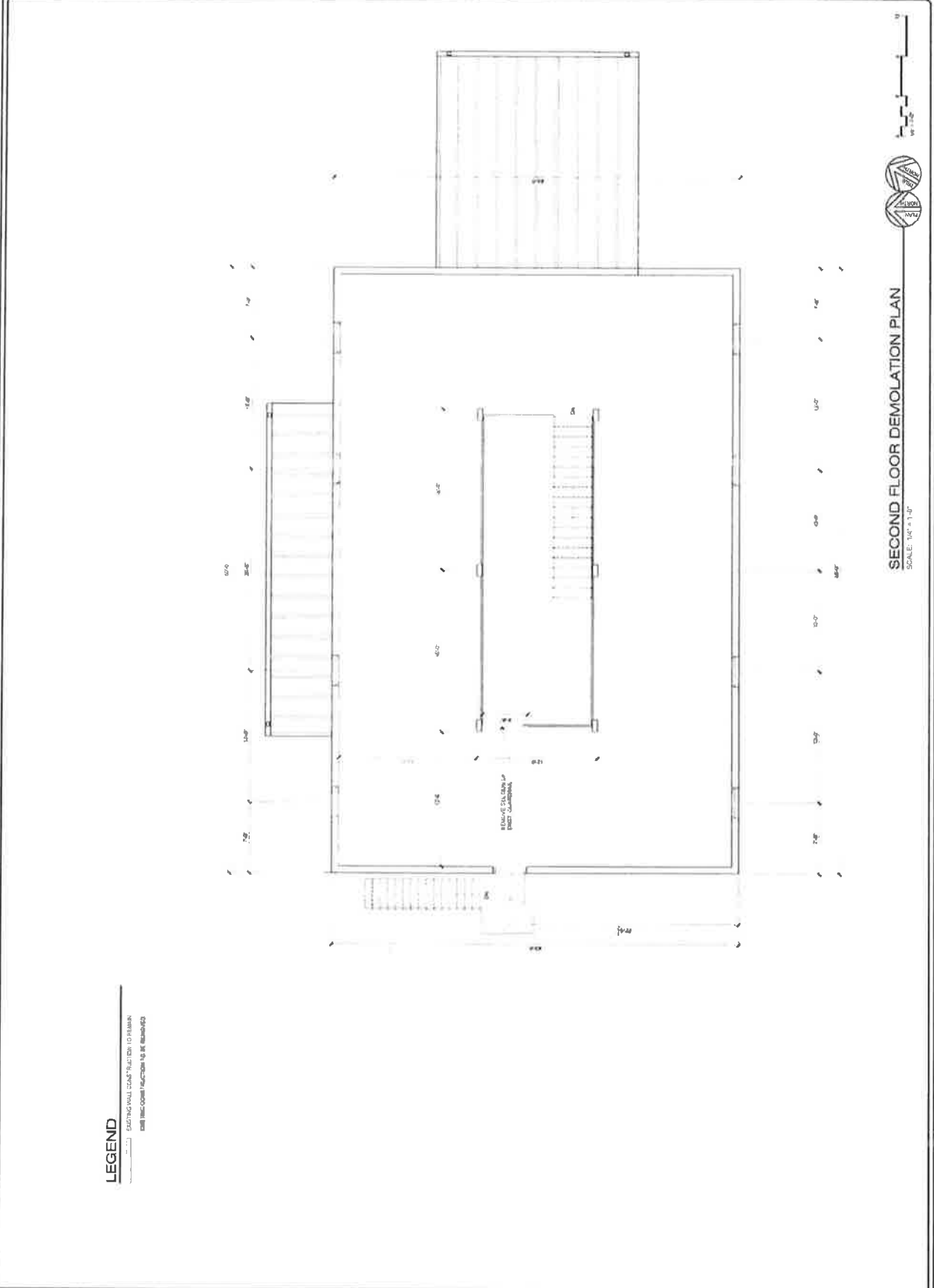
FOR ANnuAL INVENTORY  
 OF ALL STRUCTURES  
 ON THE PROJECT, THE  
 CLIENT MUST PROVIDE  
 A LISTING OF ALL  
 STRUCTURES TO BE  
 DEMOLISHED AND  
 A LISTING OF ALL  
 STRUCTURES TO BE  
 REMAINED.

PRICING  
 PRINT  
**9/13/2023**  
 NOT FOR  
 CONSTRUCTION

DATE: 09/13/2023  
 DRAWN: NAME: NAME: NAME:  
 CHECKED: NAME: NAME: NAME:  
 PROJECT NO.: 2222000

SECOND FLOOR  
 DEMOLITION  
 PLAN

**A-02**



**LEGEND**  
 --- EXISTING WALL TO REMAIN  
 --- EXISTING WALL TO BE DEMOLISHED

**SECOND FLOOR DEMOLITION PLAN**  
 SCALE: 1/4" = 1'-0"



130 Regional Park Dr.  
 Kingsport, TN 37660  
 Phone: (423) 245-7100  
 Fax: (423) 245-7413  
 www.cainrashwest.com

THIS DOCUMENT IS THE PROPERTY OF  
 CAIN RASH WEST. IT IS TO BE USED ONLY FOR THE PROJECT AND SITE SPECIFICALLY IDENTIFIED HEREIN. IT IS NOT TO BE REPRODUCED, COPIED, OR TRANSMITTED IN ANY FORM OR BY ANY MEANS, ELECTRONIC OR MECHANICAL, INCLUDING PHOTOCOPYING, RECORDING, OR BY ANY INFORMATION STORAGE AND RETRIEVAL SYSTEM.

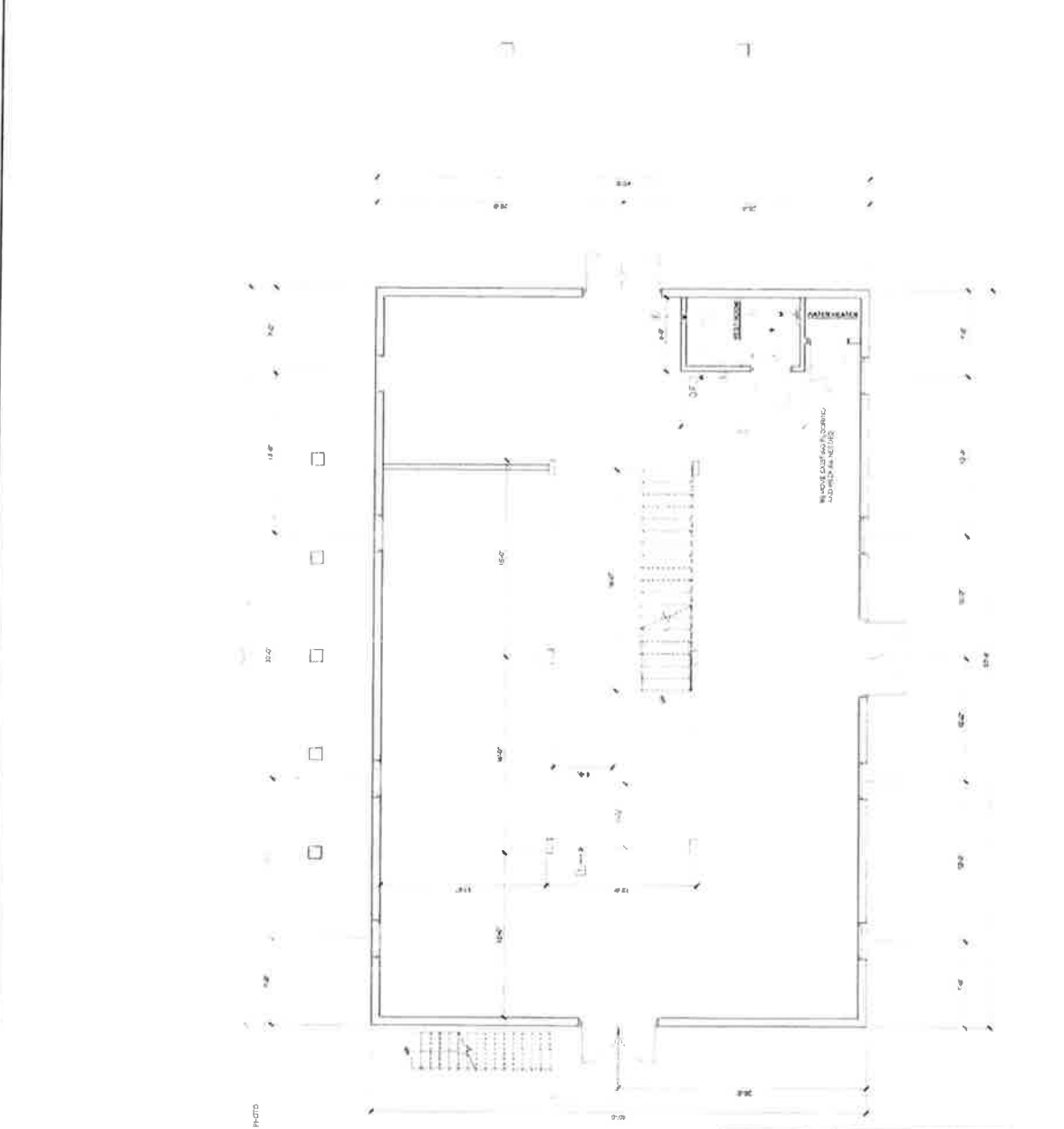
NO.	DATE	BY	DESCRIPTION
1	09/13/2023	AW	ISSUED FOR CONSTRUCTION

PRICING  
 PRINT  
**9/13/2023**  
 NOT FOR  
 CONSTRUCTION

ISSUED FOR MONTH: 09/2023  
 DRAWING NO.: 2023000  
 SHEET NO.: 01

FIRST FLOOR  
 DEMOLITION  
 PLAN

**A-01**



**FIRST FLOOR DEMOLITION PLAN**  
 SCALE: 1/4" = 1'-0"

- LEGEND**
- 1. REMOVE EXISTING PARTITION WALLS TO 1'-0" BELOW FINISHED FLOOR
  - 2. REMOVE EXISTING PARTITION WALLS TO 1'-0" BELOW FINISHED FLOOR
  - 3. REMOVE EXISTING PARTITION WALLS TO 1'-0" BELOW FINISHED FLOOR
  - 4. REMOVE EXISTING PARTITION WALLS TO 1'-0" BELOW FINISHED FLOOR
  - 5. REMOVE EXISTING PARTITION WALLS TO 1'-0" BELOW FINISHED FLOOR
  - 6. REMOVE EXISTING PARTITION WALLS TO 1'-0" BELOW FINISHED FLOOR
  - 7. REMOVE EXISTING PARTITION WALLS TO 1'-0" BELOW FINISHED FLOOR
  - 8. REMOVE EXISTING PARTITION WALLS TO 1'-0" BELOW FINISHED FLOOR
  - 9. REMOVE EXISTING PARTITION WALLS TO 1'-0" BELOW FINISHED FLOOR
  - 10. REMOVE EXISTING PARTITION WALLS TO 1'-0" BELOW FINISHED FLOOR
  - 11. REMOVE EXISTING PARTITION WALLS TO 1'-0" BELOW FINISHED FLOOR
  - 12. REMOVE EXISTING PARTITION WALLS TO 1'-0" BELOW FINISHED FLOOR
  - 13. REMOVE EXISTING PARTITION WALLS TO 1'-0" BELOW FINISHED FLOOR
  - 14. REMOVE EXISTING PARTITION WALLS TO 1'-0" BELOW FINISHED FLOOR
  - 15. REMOVE EXISTING PARTITION WALLS TO 1'-0" BELOW FINISHED FLOOR
  - 16. REMOVE EXISTING PARTITION WALLS TO 1'-0" BELOW FINISHED FLOOR
  - 17. REMOVE EXISTING PARTITION WALLS TO 1'-0" BELOW FINISHED FLOOR
  - 18. REMOVE EXISTING PARTITION WALLS TO 1'-0" BELOW FINISHED FLOOR
  - 19. REMOVE EXISTING PARTITION WALLS TO 1'-0" BELOW FINISHED FLOOR
  - 20. REMOVE EXISTING PARTITION WALLS TO 1'-0" BELOW FINISHED FLOOR
  - 21. REMOVE EXISTING PARTITION WALLS TO 1'-0" BELOW FINISHED FLOOR
  - 22. REMOVE EXISTING PARTITION WALLS TO 1'-0" BELOW FINISHED FLOOR
  - 23. REMOVE EXISTING PARTITION WALLS TO 1'-0" BELOW FINISHED FLOOR
  - 24. REMOVE EXISTING PARTITION WALLS TO 1'-0" BELOW FINISHED FLOOR
  - 25. REMOVE EXISTING PARTITION WALLS TO 1'-0" BELOW FINISHED FLOOR
  - 26. REMOVE EXISTING PARTITION WALLS TO 1'-0" BELOW FINISHED FLOOR
  - 27. REMOVE EXISTING PARTITION WALLS TO 1'-0" BELOW FINISHED FLOOR
  - 28. REMOVE EXISTING PARTITION WALLS TO 1'-0" BELOW FINISHED FLOOR
  - 29. REMOVE EXISTING PARTITION WALLS TO 1'-0" BELOW FINISHED FLOOR
  - 30. REMOVE EXISTING PARTITION WALLS TO 1'-0" BELOW FINISHED FLOOR
  - 31. REMOVE EXISTING PARTITION WALLS TO 1'-0" BELOW FINISHED FLOOR
  - 32. REMOVE EXISTING PARTITION WALLS TO 1'-0" BELOW FINISHED FLOOR
  - 33. REMOVE EXISTING PARTITION WALLS TO 1'-0" BELOW FINISHED FLOOR
  - 34. REMOVE EXISTING PARTITION WALLS TO 1'-0" BELOW FINISHED FLOOR
  - 35. REMOVE EXISTING PARTITION WALLS TO 1'-0" BELOW FINISHED FLOOR
  - 36. REMOVE EXISTING PARTITION WALLS TO 1'-0" BELOW FINISHED FLOOR
  - 37. REMOVE EXISTING PARTITION WALLS TO 1'-0" BELOW FINISHED FLOOR
  - 38. REMOVE EXISTING PARTITION WALLS TO 1'-0" BELOW FINISHED FLOOR
  - 39. REMOVE EXISTING PARTITION WALLS TO 1'-0" BELOW FINISHED FLOOR
  - 40. REMOVE EXISTING PARTITION WALLS TO 1'-0" BELOW FINISHED FLOOR
  - 41. REMOVE EXISTING PARTITION WALLS TO 1'-0" BELOW FINISHED FLOOR
  - 42. REMOVE EXISTING PARTITION WALLS TO 1'-0" BELOW FINISHED FLOOR
  - 43. REMOVE EXISTING PARTITION WALLS TO 1'-0" BELOW FINISHED FLOOR
  - 44. REMOVE EXISTING PARTITION WALLS TO 1'-0" BELOW FINISHED FLOOR
  - 45. REMOVE EXISTING PARTITION WALLS TO 1'-0" BELOW FINISHED FLOOR
  - 46. REMOVE EXISTING PARTITION WALLS TO 1'-0" BELOW FINISHED FLOOR
  - 47. REMOVE EXISTING PARTITION WALLS TO 1'-0" BELOW FINISHED FLOOR
  - 48. REMOVE EXISTING PARTITION WALLS TO 1'-0" BELOW FINISHED FLOOR
  - 49. REMOVE EXISTING PARTITION WALLS TO 1'-0" BELOW FINISHED FLOOR
  - 50. REMOVE EXISTING PARTITION WALLS TO 1'-0" BELOW FINISHED FLOOR
  - 51. REMOVE EXISTING PARTITION WALLS TO 1'-0" BELOW FINISHED FLOOR
  - 52. REMOVE EXISTING PARTITION WALLS TO 1'-0" BELOW FINISHED FLOOR
  - 53. REMOVE EXISTING PARTITION WALLS TO 1'-0" BELOW FINISHED FLOOR
  - 54. REMOVE EXISTING PARTITION WALLS TO 1'-0" BELOW FINISHED FLOOR
  - 55. REMOVE EXISTING PARTITION WALLS TO 1'-0" BELOW FINISHED FLOOR
  - 56. REMOVE EXISTING PARTITION WALLS TO 1'-0" BELOW FINISHED FLOOR
  - 57. REMOVE EXISTING PARTITION WALLS TO 1'-0" BELOW FINISHED FLOOR
  - 58. REMOVE EXISTING PARTITION WALLS TO 1'-0" BELOW FINISHED FLOOR
  - 59. REMOVE EXISTING PARTITION WALLS TO 1'-0" BELOW FINISHED FLOOR
  - 60. REMOVE EXISTING PARTITION WALLS TO 1'-0" BELOW FINISHED FLOOR
  - 61. REMOVE EXISTING PARTITION WALLS TO 1'-0" BELOW FINISHED FLOOR
  - 62. REMOVE EXISTING PARTITION WALLS TO 1'-0" BELOW FINISHED FLOOR
  - 63. REMOVE EXISTING PARTITION WALLS TO 1'-0" BELOW FINISHED FLOOR
  - 64. REMOVE EXISTING PARTITION WALLS TO 1'-0" BELOW FINISHED FLOOR
  - 65. REMOVE EXISTING PARTITION WALLS TO 1'-0" BELOW FINISHED FLOOR
  - 66. REMOVE EXISTING PARTITION WALLS TO 1'-0" BELOW FINISHED FLOOR
  - 67. REMOVE EXISTING PARTITION WALLS TO 1'-0" BELOW FINISHED FLOOR
  - 68. REMOVE EXISTING PARTITION WALLS TO 1'-0" BELOW FINISHED FLOOR
  - 69. REMOVE EXISTING PARTITION WALLS TO 1'-0" BELOW FINISHED FLOOR
  - 70. REMOVE EXISTING PARTITION WALLS TO 1'-0" BELOW FINISHED FLOOR
  - 71. REMOVE EXISTING PARTITION WALLS TO 1'-0" BELOW FINISHED FLOOR
  - 72. REMOVE EXISTING PARTITION WALLS TO 1'-0" BELOW FINISHED FLOOR
  - 73. REMOVE EXISTING PARTITION WALLS TO 1'-0" BELOW FINISHED FLOOR
  - 74. REMOVE EXISTING PARTITION WALLS TO 1'-0" BELOW FINISHED FLOOR
  - 75. REMOVE EXISTING PARTITION WALLS TO 1'-0" BELOW FINISHED FLOOR
  - 76. REMOVE EXISTING PARTITION WALLS TO 1'-0" BELOW FINISHED FLOOR
  - 77. REMOVE EXISTING PARTITION WALLS TO 1'-0" BELOW FINISHED FLOOR
  - 78. REMOVE EXISTING PARTITION WALLS TO 1'-0" BELOW FINISHED FLOOR
  - 79. REMOVE EXISTING PARTITION WALLS TO 1'-0" BELOW FINISHED FLOOR
  - 80. REMOVE EXISTING PARTITION WALLS TO 1'-0" BELOW FINISHED FLOOR
  - 81. REMOVE EXISTING PARTITION WALLS TO 1'-0" BELOW FINISHED FLOOR
  - 82. REMOVE EXISTING PARTITION WALLS TO 1'-0" BELOW FINISHED FLOOR
  - 83. REMOVE EXISTING PARTITION WALLS TO 1'-0" BELOW FINISHED FLOOR
  - 84. REMOVE EXISTING PARTITION WALLS TO 1'-0" BELOW FINISHED FLOOR
  - 85. REMOVE EXISTING PARTITION WALLS TO 1'-0" BELOW FINISHED FLOOR
  - 86. REMOVE EXISTING PARTITION WALLS TO 1'-0" BELOW FINISHED FLOOR
  - 87. REMOVE EXISTING PARTITION WALLS TO 1'-0" BELOW FINISHED FLOOR
  - 88. REMOVE EXISTING PARTITION WALLS TO 1'-0" BELOW FINISHED FLOOR
  - 89. REMOVE EXISTING PARTITION WALLS TO 1'-0" BELOW FINISHED FLOOR
  - 90. REMOVE EXISTING PARTITION WALLS TO 1'-0" BELOW FINISHED FLOOR
  - 91. REMOVE EXISTING PARTITION WALLS TO 1'-0" BELOW FINISHED FLOOR
  - 92. REMOVE EXISTING PARTITION WALLS TO 1'-0" BELOW FINISHED FLOOR
  - 93. REMOVE EXISTING PARTITION WALLS TO 1'-0" BELOW FINISHED FLOOR
  - 94. REMOVE EXISTING PARTITION WALLS TO 1'-0" BELOW FINISHED FLOOR
  - 95. REMOVE EXISTING PARTITION WALLS TO 1'-0" BELOW FINISHED FLOOR
  - 96. REMOVE EXISTING PARTITION WALLS TO 1'-0" BELOW FINISHED FLOOR
  - 97. REMOVE EXISTING PARTITION WALLS TO 1'-0" BELOW FINISHED FLOOR
  - 98. REMOVE EXISTING PARTITION WALLS TO 1'-0" BELOW FINISHED FLOOR
  - 99. REMOVE EXISTING PARTITION WALLS TO 1'-0" BELOW FINISHED FLOOR
  - 100. REMOVE EXISTING PARTITION WALLS TO 1'-0" BELOW FINISHED FLOOR



**PHOTO OF EXISTING RESTROOM**

**GENESIS VERTICAL PLATFORM LIFT:**

**Code Reference:** ASME A18.1-2014 "Safety Standard for Platforms Lifts and Stairway Chairlifts"

**General:** Color - Custom (Aluminium extrusions with 16 ga. panels/steel posts powder coated custom color (RAL# TBA))  
 Outdoor Unit - Pit Mount (drain required)  
 ANSI Z97.1 Plexiglass Etching  
 Number of Stops - Two Stop Kit



**Drive Mast** Model - GVL-EN-144  
 Chain Hydraulic drive system c/w Continuous Mains Power with Auxiliary Battery Power System, Platform Emergency Lowering (shipped loose), Shoring Pin, & Pressure Gauge  
 Motor - 2.2 kW, (3.00 HP), 24 VDC  
 Travel Speed - 340 kg @ 5.2 m/min [750 lb @ 17 ft/min]  
 Power Supply - 120 VAC, single phase, 60 Hz, on a dedicated 15 amp. circuit  
 Equipped with - Electrical Disconnect (shipped loose) (x1), Pit Switch Kit, Oil Recovery System

**Controls:** Platform Controls - Push-Button (Tactile) Type c/w Illuminated Directional Buttons, Courtesy Lighting, Illuminated Round (push/pull) Emergency Stop Switch & Audible Alarm  
 Lower Landing Call Station - Push-Button (Tactile) Frame Mount  
 Upper Landing Call Station - Push-Button (Tactile) Frame Mount

**Platform:** Size - CUSTOM c/w grab rail, anti-skid deck and 1100mm [43 1/4"] high walls  
 Configuration - Straight Through (180°) Exit/Entry  
 Capacity - Maximum 340 kg [750 lb] operating load  
 Equipped with - Factory Pre-Wire for Phone by Others

**Door/Gates:** Lower - 36" wide 1/4" Laminated Glass Door c/w Mechanical Interlock & Omaha Door Stop  
 Upper - 36" wide 1/4" Laminated Glass Gate c/w Mechanical Interlock & Omaha Door Stop

**Enclosure:** Panels - Steel  
 Total Unit Weight - Approximately 1575 lb [716 kg]  
 Lifting Ht. (H1) - 3073mm [121"] lower to upper floor plus 76mm [3"] deep pit

A	INITIAL RELEASE	UNITS: INCHES	SEP/12/23	AU			
REV.	SCALE: 1:40	TOLERANCES: DIMENSIONAL ±1/32	ANGULAR ±0.5'	PROJECTION: 	DATE	DRN.BY	CHK.BY
		GENESIS ENCLOSURE - iGOLDD DRAWING FARMSTEAD MUSEUM AT BMP 853 BAYS MOUNTAIN PARK RD KINGSPORT TN 37660				89610-IG-A	
		PAGE 1 OF 5 United Elevator Services					

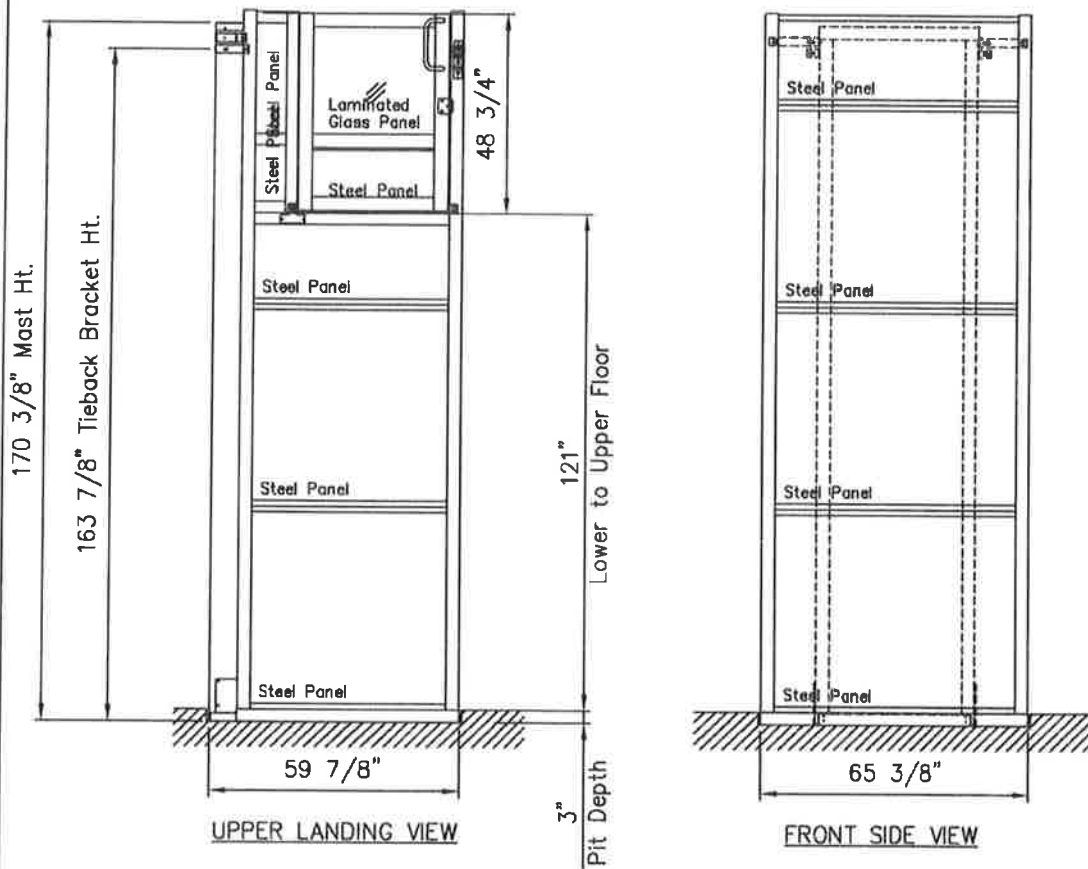


**DEDICATED CIRCUIT SUPPLIED BY OTHERS:**  
 120 VAC / 1 PHASE - 60 Hz.  
 Conduit and devices to suit local codes and  
 a recommended 15 amp. dedicated circuit.

Note: Masts must be fastened to structural support. Refer to the loading diagram to confirm the loads that must be supported by a load bearing structure.

LIFT HEIGHT  
 H1=124"

(H1=Lower to Upper Floor+Pit Depth)



A	INITIAL RELEASE	UNITS: INCHES	SEP/12/23	AU			
REV.	SCALE: 1:40	TOLERANCES: DIMENSIONAL ±1/32	ANGULAR ±0.5°	PROJECTION:	DATE	DRN.BY	CHK.BY

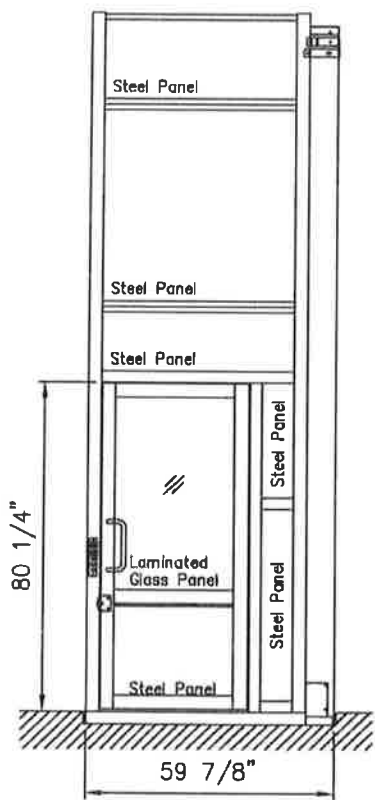


GENESIS ENCLOSURE - iGOLDD DRAWING  
 FARMSTEAD MUSEUM AT BMP  
 853 BAYS MOUNTAIN PARK RD  
 KINGSPORT TN 37660  
 United Elevator Services

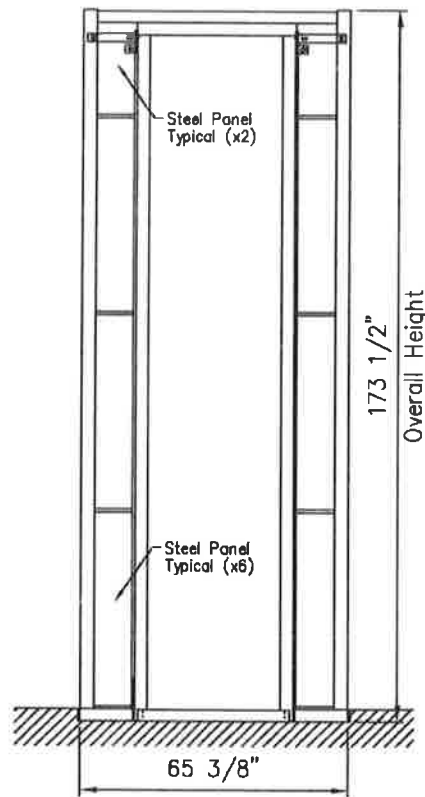
PAGE 2 OF 5

89610-IG-A




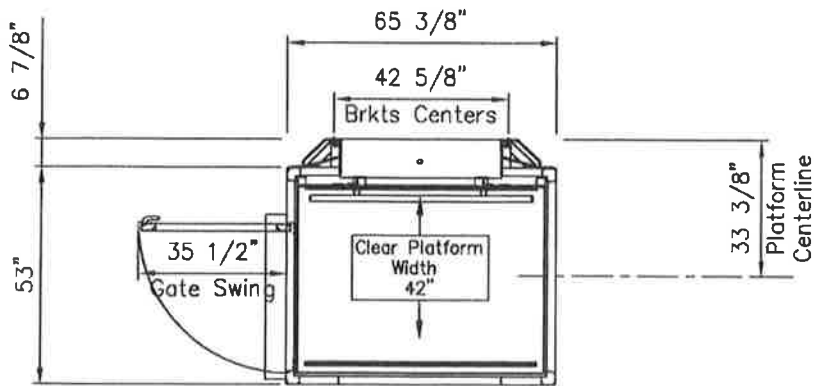


LOWER LANDING VIEW



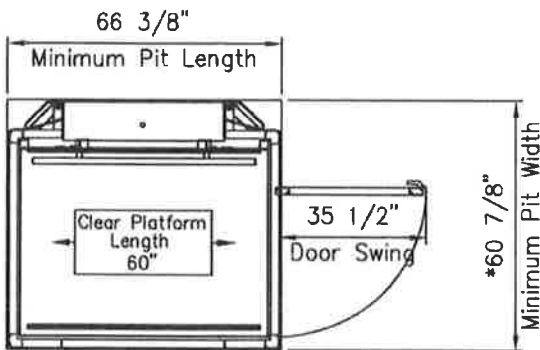
MAST SIDE VIEW

A	INITIAL RELEASE	UNITS: INCHES	SEP/12/23	AU			
REV.	SCALE: 1:40	TOLERANCES: DIMENSIONAL ±1/32	ANGULAR ±0.5°	PROJECTION:	DATE	DRN.BY	CHK.BY
		<b>GENESIS ENCLOSURE – iGOLDD DRAWING</b> FARMSTEAD MUSEUM AT BMP 853 BAYS MOUNTAIN PARK RD KINGSPORT TN 37660				B9610-IG-A	
		United Elevator Services		PAGE 3 OF 5			



UPPER LANDING PLAN VIEW

\* NOTE: If a tie back rail (spreader bar) is to be used to attach the mast to a wall, the pit width dimension must be increased by 38mm [1 1/2"].



LOWER LANDING PLAN VIEW

A	INITIAL RELEASE	UNITS: INCHES	SEP/12/23	AU			
REV.	SCALE: 1:40	TOLERANCES: DIMENSIONAL ±1/32	ANGULAR ±0.5°	PROJECTION:	DATE	DRN.BY	CHK.BY



GENESIS ENCLOSURE - iGOLDD DRAWING  
 FARMSTEAD MUSEUM AT BMP  
 853 BAYS MOUNTAIN PARK RD  
 KINGSPORT TN 37660  
 United Elevator Services

89610-IG-A

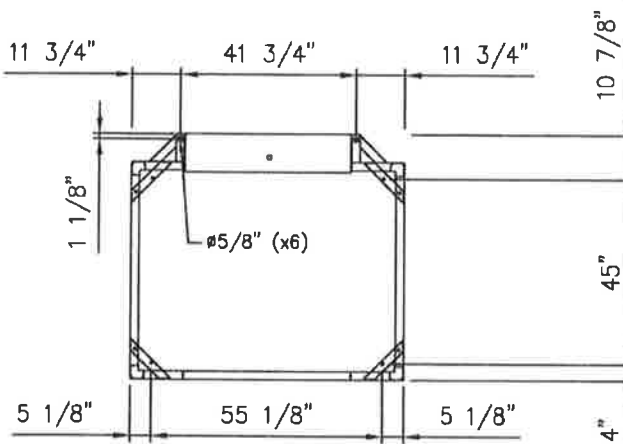
SYM.	DESCRIPTION	VALUE (MAX.)
F1 = 1000 lb	PAYLOAD (MAX.)	3335 N [750 lb]
	CAR (PLATFORM) WEIGHT	1110 N [250 lb]
F2	MAST WEIGHT	2335 N [525 lb]
F3	FLOOR REACTION	7784 N [1750 lb]
F4	FLOOR REACTION	2536 N [570 lb]
F5	TIEBACK REACTION	787 N [177 lb]
F6	ENCLOSURE WEIGHT	3559 N [800 lb]

L1	L2	PLATFORM SIZE	MODEL	MAST HEIGHT	TIEBACK HEIGHT
29 7/8"	52 1/8"	CUSTOM	144"	170 3/8"	163 7/8"

**SPECIAL NOTE:**

These are reaction forces generated by the lift. Adhere to local building codes, regulations, and safety factors for supporting structures. Consult a structural engineer or architect in your jurisdiction. Wind loading effects are not considered in these calculations. Consult manufacturer.

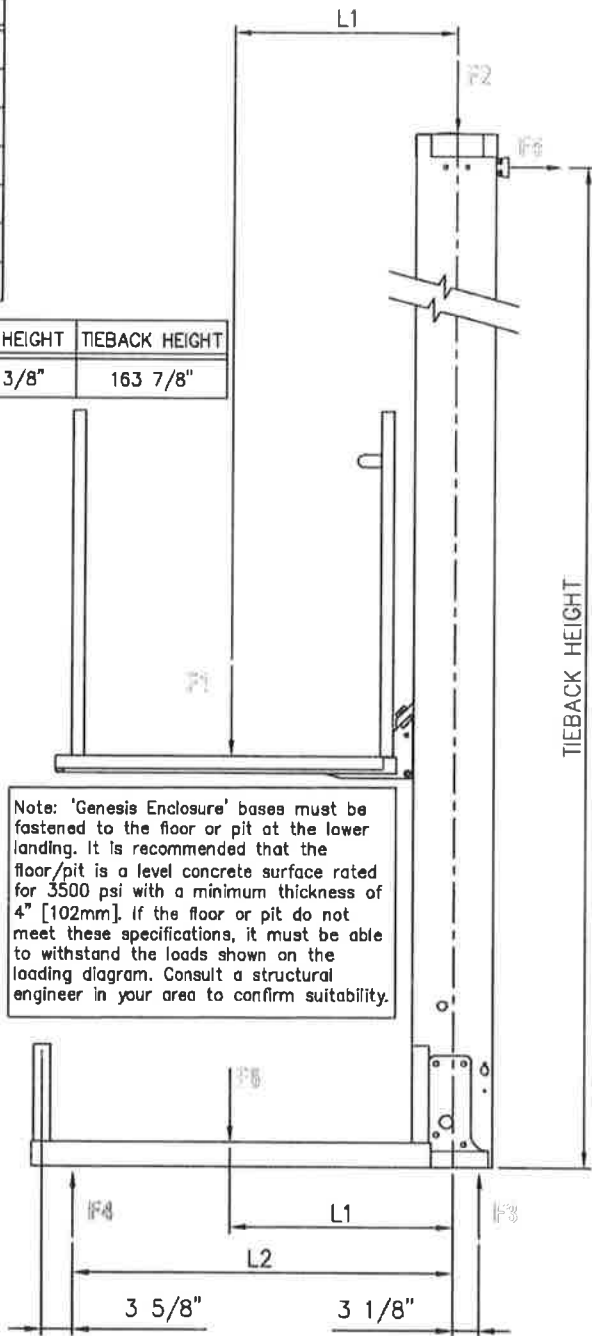
**BASE MOUNTING DETAILS**



Note: 'Genesis Enclosure' bases must be fastened to the floor or pit at the lower landing. It is recommended that the floor/pit is a level concrete surface rated for 3500 psi with a minimum thickness of 4" [102mm]. If the floor or pit do not meet these specifications, it must be able to withstand the loads shown on the loading diagram. Consult a structural engineer in your area to confirm suitability.

The information contained in this drawing constitutes the Intellectual Property, including, but not limited to, knowledge, trade secrets, and proprietary information which is the exclusive property of Garaventa Accessibility. All information contained in this drawing is to be held in the strictest confidence by the recipient, and is not to be copied, disclosed to, or transmitted to any third parties without the express written authorization of Garaventa Accessibility.

© 2005 GARAVENTA ACCESSIBILITY.



**DETAIL 1 – ENCLOSURE MODEL LOADING DIAGRAM**

A	INITIAL RELEASE	UNITS: INCHES	SEP/12/23	AU
REV.	SCALE: 1:40	TOLERANCES: DIMENSIONAL ±1/32	ANGULAR ±0.5°	PROJECTION:
			DATE	DRN.BY



GENESIS ENCLOSURE – iGOLDD DRAWING  
 FARMSTEAD MUSEUM AT BMP  
 853 BAYS MOUNTAIN PARK RD  
 KINGSPORT TN 37660  
 United Elevator Services

89610-IG-A



EXHIBIT A

Construction 130 Regional Park Drive Kingsport, Tennessee 37660

### Bays Mountain Farmstead Museum

Kingsport, Tennessee

#### BUDGET COST BREAKDOWN

September 21, 2023

SITE DEVELOPMENT COST				
Description	Qty	Unit	Unit Cost	Amount
Clearing & Grubb				15,000.00
Earthwork				60,000.00
Site Demo				8,000.00
Paving & Curbs				62,000.00
Demolition - Toilet				2,000.00
Demolition - Chair Lift				2,000.00
Concrete Patching				2,000.00
Pine Board Enclosure				9,600.00
New Flooring				1,000.00
Painting - Chair Lift				1,000.00
Painting - Toilet				1,000.00
Vanity				800.00
Specialties				800.00
Wheel Chair Lift				45,000.00
Plumbing				10,000.00
Electrical				10,000.00
<b>subtotal</b>				<b>230,200.00</b>
<b>General Requirements</b>				<b>30,000.00</b>
<b>Bond/Insurance/Permit/Etc.</b>				<b>8,800.00</b>
<b>O/P</b>				<b>40,000.00</b>
<b>TOTAL</b>				<b>309,000.00</b>
Site Work / Paving				189,000.00
Restrooms				35,000.00
HC Lift				85,000.00
				<b>309,000.00</b>