

# ArcGIS Web Map



7/24/2024, 11:00:11 AM

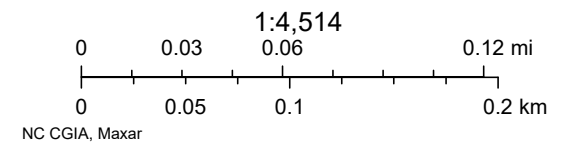
Streets

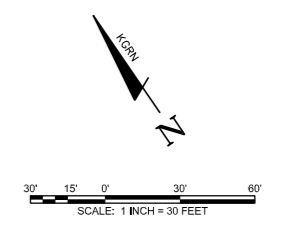
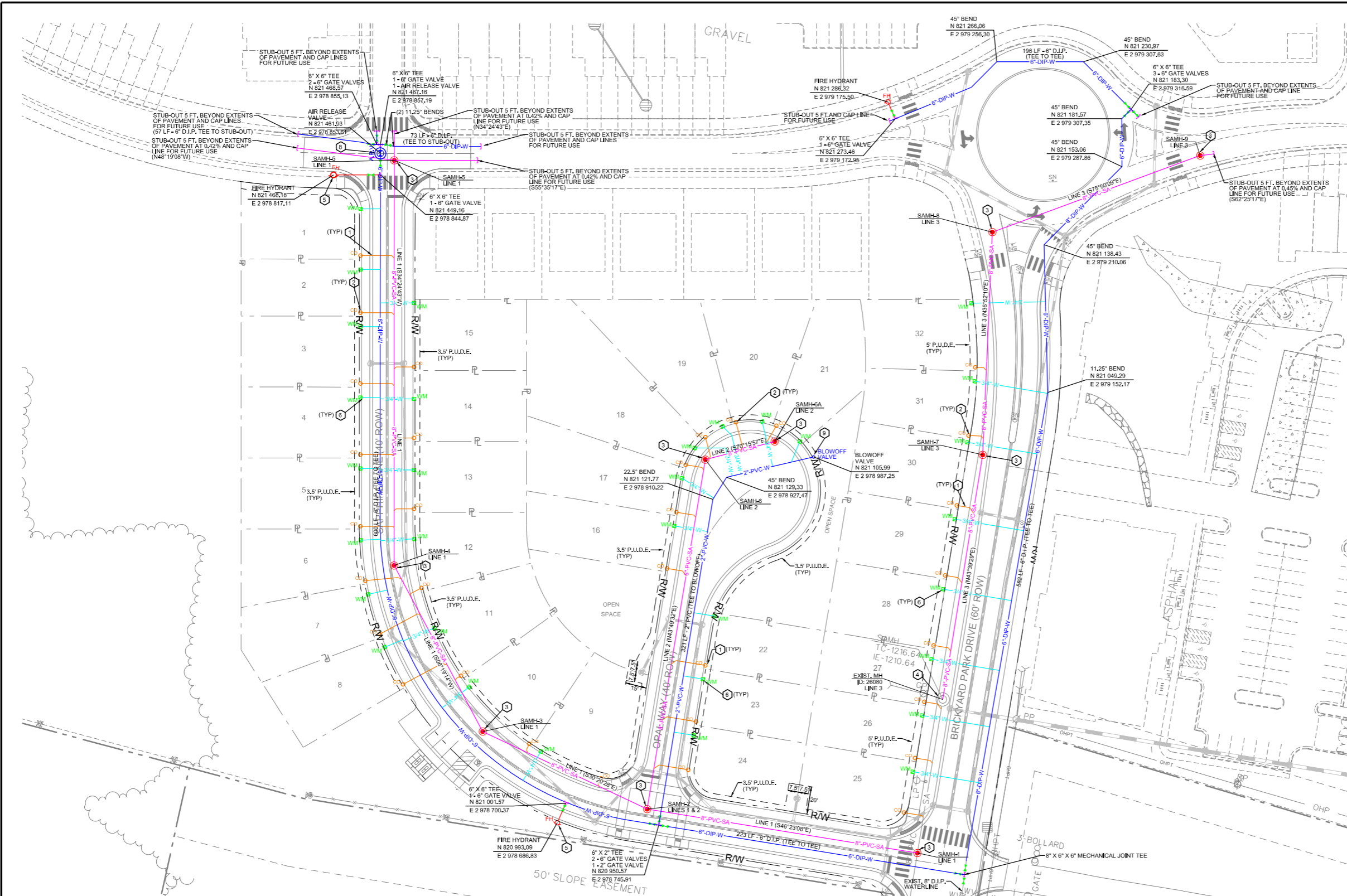
Sullivan County Parcels Dec 2023

Parcels

Railroad\_ROW

Kpt 911 Address

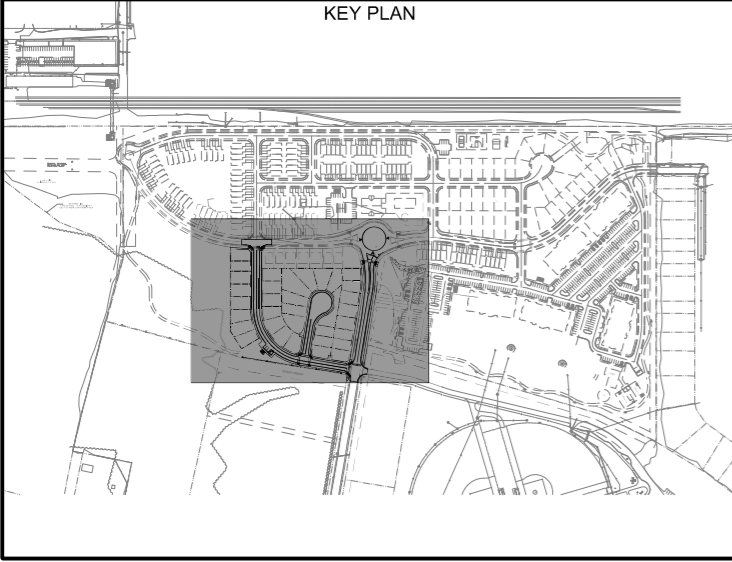




- LEGEND:**
- 8" PVC-SA SANITARY SEWER LINE
  - 2" PVC-W WATER LINE
  - 6" DIP-W WATER LINE
  - 3/4" W WATER SERVICE LINE
  - GATE VALVE
  - CLEANOUT
  - SANITARY MANHOLE
  - FIRE HYDRANT
  - GAS TAP
  - WATER METER
  - AIR RELEASE VALVE

- GENERAL NOTES:**
1. SEE C0.01 FOR WATER AND SEWER NOTES.
  2. ALL SANITARY PIPING SHALL BE SDR-35.
  3. MINIMUM 18" SEPARATION BETWEEN SANITARY AND WATER LINES.
  4. COORDINATE WITH THE CITY OF KINGSPORT ON THE SEWER LINE INSTALLATION.
  5. STORM SHOWN FOR REFERENCE. SEE SHEETS C2.11 & C2.12 FOR STORM LAYOUT INFORMATION.
  6. PLACE AN ABOVE GRADE MARKER/STAKE LOCATING THE END OF ALL WATER AND SEWER STUB-OUTS FOR FUTURE PHASE TIE-INS.
  7. WATER MAIN PIPING SHALL BE DUCTILE IRON CLASS 350. WATER SERVICE LINE PIPING SHALL BE COPPER OR HDPE PER SPECIFICATION S3.11.00.
  8. WATER METERS AND SANITARY SEWER CLEANOUTS SHOULD BE LOCATED SO THEY ARE NOT IN DRIVEWAYS.

- KEYED NOTES:**
- 1 SANITARY SEWER SERVICE LATERAL (DETAIL 5, SHEET C8.01)
  - 2 SANITARY SEWER CLEAN-OUT (DETAIL 9, SHEET C8.01)
  - 3 PRECAST SANITARY MANHOLE (DETAIL 2 AND 6, SHEET C8.01)
  - 4 SANITARY SEWER CONNECTION TO EXISTING MANHOLE (DETAIL 10, SHEET C8.01)
  - 5 FIRE HYDRANT (DETAIL 11, SHEET C8.01)
  - 6 WATER METER (DETAIL 7, SHEET C8.01)
  - 7 VALVE BOX (DETAIL 8, SHEET C8.01)
  - 8 AIR RELEASE VALVE (DETAIL 12, SHEET C8.01)
  - 9 BLOWOFF ASSEMBLY (DETAIL 3, SHEET C8.02)



**SANITARY SEWER CHART**

MANHOLE ID	MANHOLE TYPE	NORTHING	EASTING	TOP OF CASTING ELEVATION	INVERT IN	INVERT OUT	DEPTH OF MH (FROM TC TO INVERT OUT) (FT.)	NUMBER OF CONNECTIONS	ANGLE OF SEPARATION (DEG.)	STANDARD DRAWINGS
SAMH-1	PRECAST MANHOLE	820829.98	2978887.98	1214.85	1208.05	1208.05	6.80	3	90.0, 90.0	DETAIL 2, C8.01
SAMH-2	PRECAST MANHOLE	820964.68	2978745.59	1216.66	1208.98	1208.88	7.78	3	90.2, 74.2	DETAIL 2, C8.01
SAMH-3	PRECAST MANHOLE	821077.46	2978679.58	1218.01	1209.63	1209.53	8.48	2	143.3	DETAIL 2, C8.01
SAMH-4	PRECAST MANHOLE	821211.95	2978694.47	1219.46	1210.30	1210.20	9.26	2	151.9	DETAIL 2, C8.01
SAMH-5	PRECAST MANHOLE	821452.16	2978859.04	1222.52	1211.62	1211.52	11.00	4	90.0, 180.0, 97.3	DETAIL 2, C8.01
SAMH-6	PRECAST MANHOLE	821148.41	2978921.93	1219.16	1210.15	1210.05	9.11	2	114.1	DETAIL 2, C8.01
SAMH-6A	PRECAST MANHOLE	821131.00	2978970.46	1220.19	N/A	1210.39	9.80	1	N/A	DETAIL 2, C8.01
SAMH-7	PRECAST MANHOLE	821038.67	2979088.34	1219.54	1211.59	1211.49	8.05	2	173.20	DETAIL 2, C8.01
SAMH-8	PRECAST MANHOLE	821166.87	2979184.49	1221.44	1212.36	1212.26	9.18	2	112.7	DETAIL 2, C8.01
SAMH-9	PRECAST MANHOLE	821127.92	2979338.82	1225.71	1213.23	1213.13	12.58	2	166.6	DETAIL 2, C8.01

