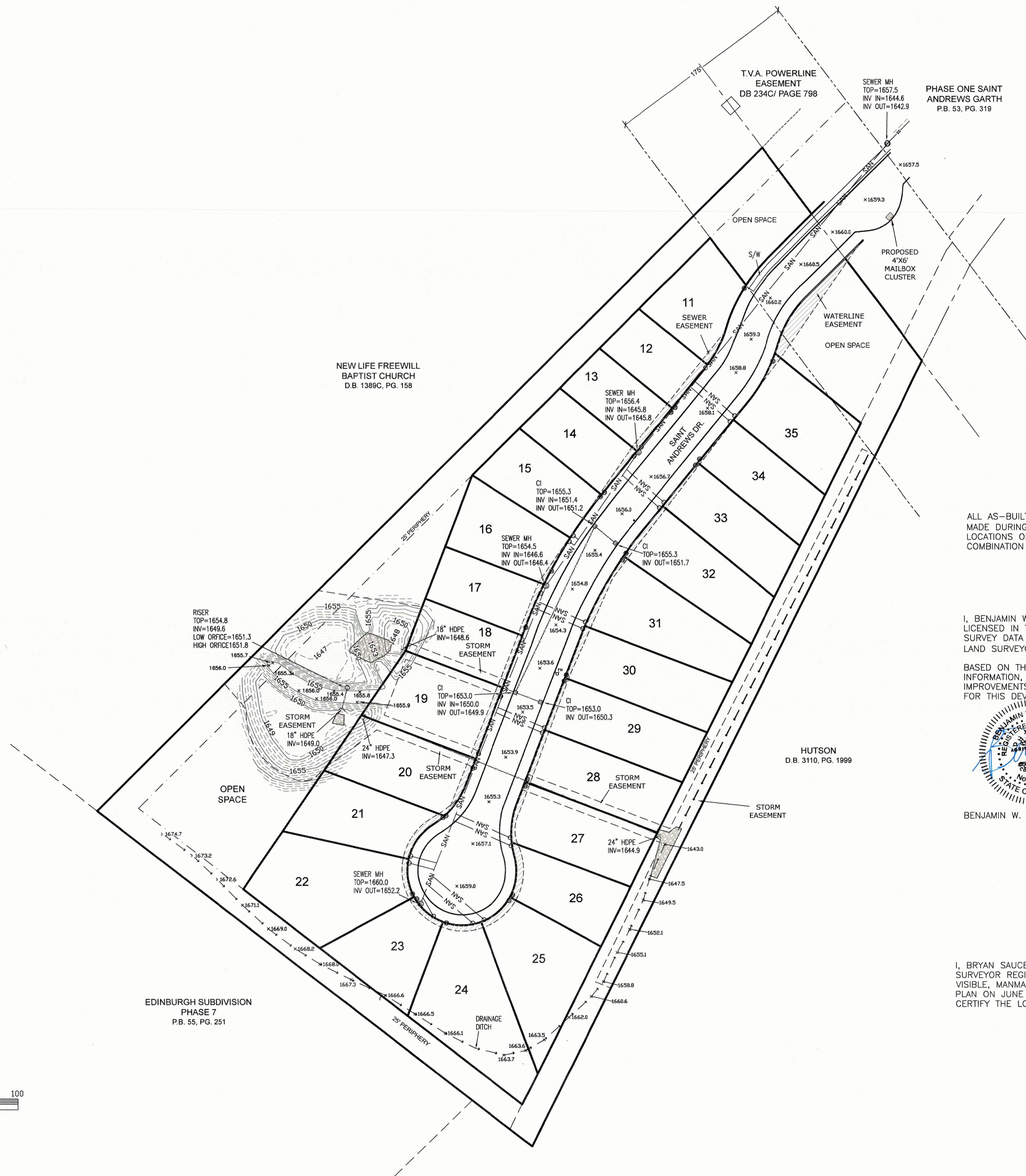


LOCATION MAP  
N.T.S.

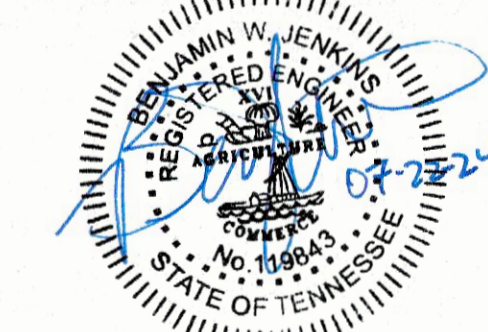
BY:	
DATE:	
REVISIONS:	



ALL AS-BUILT INFORMATION IS BASED UPON A COMBINATION OF VISIBLE ITEMS MADE DURING FIELD OBSERVATION (I.E. MANHOLES, VALVES, HYDRANTS, ETC.). LOCATIONS OF UNDERGROUND ITEMS ARE APPROXIMATE AND BASED UPON A COMBINATION OF UTILITY COMPANY FIELD MARKINGS AND DESIGN PLANS.

I, BENJAMIN W. JENKINS (TN PE #119843), HEREBY CERTIFY THAT I AM AN ENGINEER LICENSED IN THE STATE OF TENNESSEE. I HAVE REVIEWED THE INFORMATION BASED ON FIELD SURVEY DATA PROVIDED TO ME BY BRYAN SAUCEMAN, A STATE OF TENNESSEE REGISTERED LAND SURVEYOR (TN RLS #2846).

BASED ON THE AFOREMENTIONED SURVEY AND TO THE BEST OF MY KNOWLEDGE, INFORMATION, AND BELIEF, THE SANITARY SEWER, WATERLINE, & STORM SEWER IMPROVEMENTS SHOWN ON THIS PLAN FUNCTION AS INTENDED ON THE APPROVED DESIGN FOR THIS DEVELOPMENT.



BENJAMIN W. JENKINS, P.E.

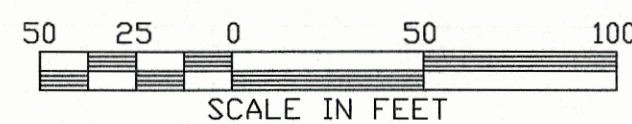
I, BRYAN SAUCEMAN (RLS #2846), HEREBY CERTIFY THAT I AM A LAND SURVEYOR REGISTERED IN THE STATE OF TENNESSEE. I HAVE LOCATED ALL VISIBLE, MANMADE WATERLINE AND SANITARY SEWER FEATURES SHOWN ON THIS PLAN ON JUNE 10, 2024 AND REVISED DETENTION POND ON JULY 22, 2024. I CERTIFY THE LOCATION, ELEVATION AND DESCRIPTION OF THESE FEATURES.



BRYAN SAUCEMAN, PLS  
ALLEY & ASSOCIATES, INC.

**LEGEND**

- MH MANHOLE
- FH FIRE HYDRANT
- INV INVERT
- WM WATER METER
- HDPE HIGH-DENSITY POLYETHYLENE PIPE
- CI CURB INLET
- P.B. PLAT BOOK
- D.B. DEED BOOK
- PC. PACE
- SEWER LINE
- RIP RAP
- CLEAN OUT



STORM, SANITARY SEWER & WATER AS-BUILT  
SAINT ANDREWS GARTH PHASE 2  
KINGSPORT, TENNESSEE

ALLEY & ASSOCIATES, INC.  
SURVEYORS  
422 E. MARKET STREET KINGSPORT, TENNESSEE 37660  
TELEPHONE (423) 392-8896  
E-MAIL: bsauceman@alleyassociates.com