

BLAINE COUNTY RECYCLES!

Lamar Waters and Colleen Clark, MPH



Outline:

I. Recycling: Global Changes

II. What Happens to My Waste?

III. The Blaine County Recycle Center

IV. How is the Program Funded

V. How to Recycle

VI. Inert Waste Diversion

VII. What Next!

RECYCLING: GLOBAL CHANGES

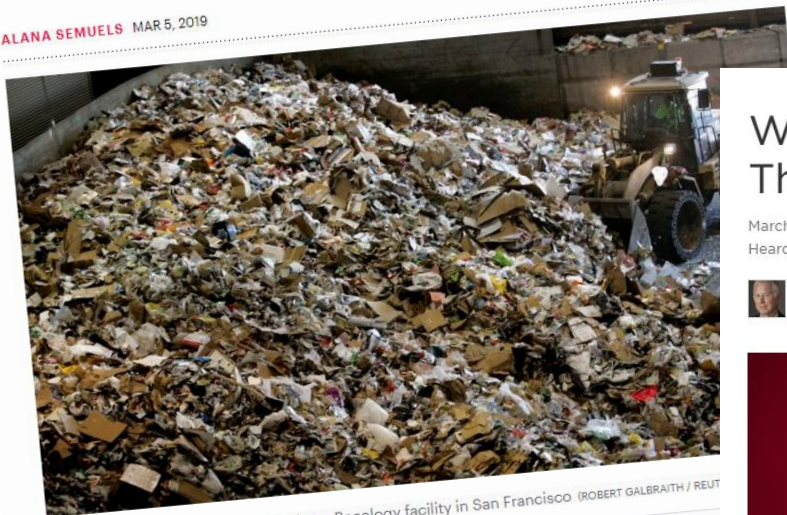


TECHNOLOGY

Is This the End of Recycling?

Americans are consuming more and more stuff. Now that other countries won't take our papers and plastics, they're ending up in the trash.

ALANA SEMUELS MAR 5, 2019



Plastic, paper, glass, and cardboard at a Recology facility in San Francisco (ROBERT GALBRAITH / REUTER)

Where Will Your Plastic Trash Go Now That China Doesn't Want It?

March 13, 2019 - 4:28 PM ET
Heard on All Things Considered



CHRISTOPHER JOYCE



America's new recycling crisis, explained by an expert

For 30 years, China took in the world's plastic. What happened when they stopped?

By Micaela Marini Higgs | Apr 2, 2019, 7:00am EDT



SHARE

United States of Plastic

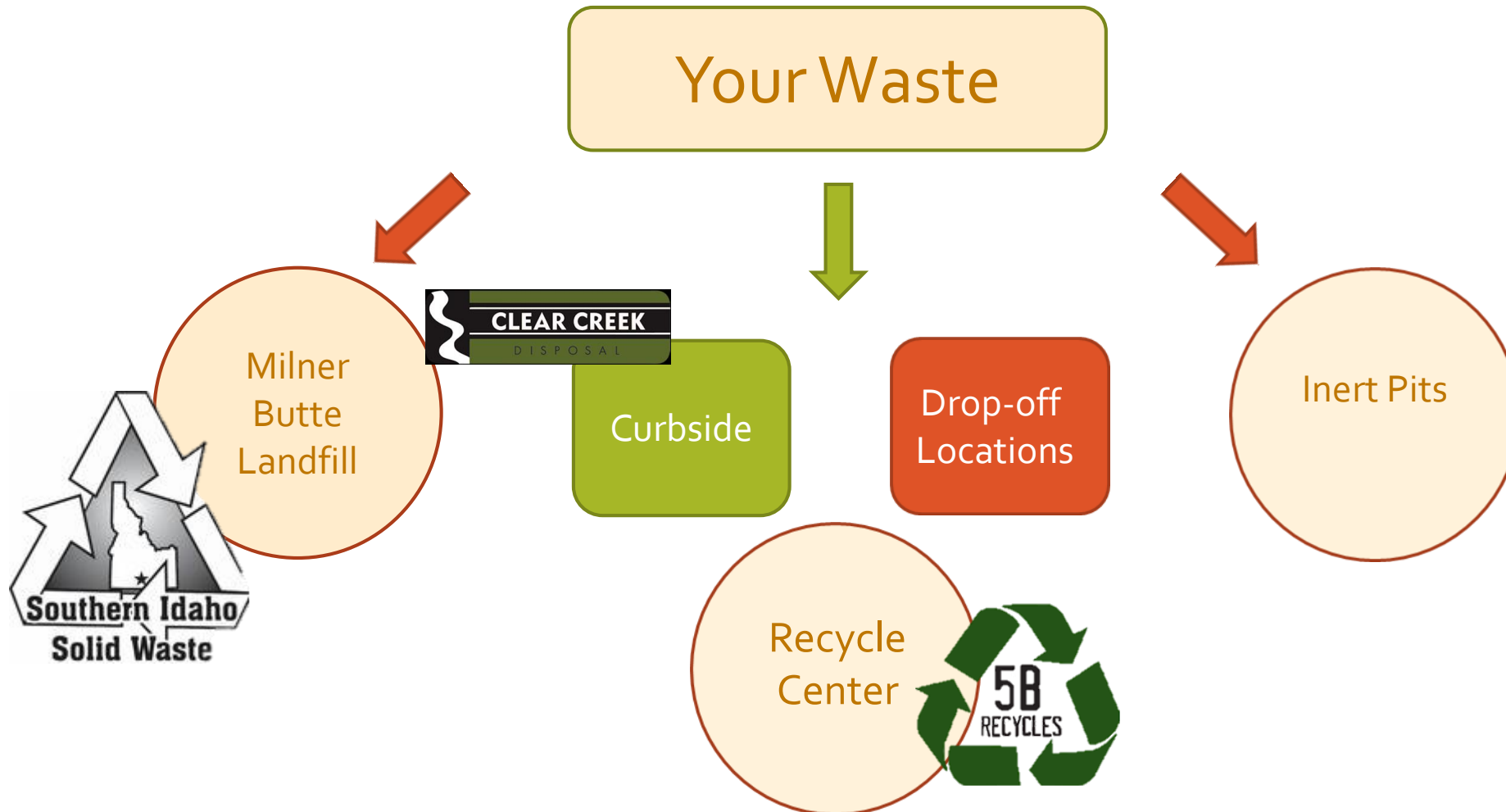
Where does your plastic go? Global investigation reveals America's dirty secret

Report from 11 countries
US waste makes its way
world - and overwhelms the
is



WHAT HAPPENS TO MY WASTE?

The Waste Channels





South-central Idaho's regional landfill is now turning gas into energy

HEATHER KENNISON hkennison@magicvalley.com Jun 28, 2018 1

99¢ FOR 4 WKS - SUBSCRIBE NOW!



Cassia County Commissioner and Southern Idaho Solid Waste President Paul Christensen turns on the landfill gas-to-energy engines Wednesday during the Flip The Switch event at the Milner Butte Landfill near Burley.

PAT SUTPHIN TIMES-NEWS



THE BLAINE COUNTY RECYCLE CENTER

So...Single Stream vs. Sort?



The Staff



Lamar Water: Supervisor
Tim Zweimiller: Equipment Operator
Nick Cahuana: Equipment Operator
Colleen Clark: Outreach and Education

The Facility



The Baler



The Sorter



Our Scale



HOW IS THE PROGRAM FUNDED?

Tipping Fees and from Commodities



FY 2018 Revenue:

RC Tipping Revenue:

\$103,975.57

Material Revenue:

\$77,901.26

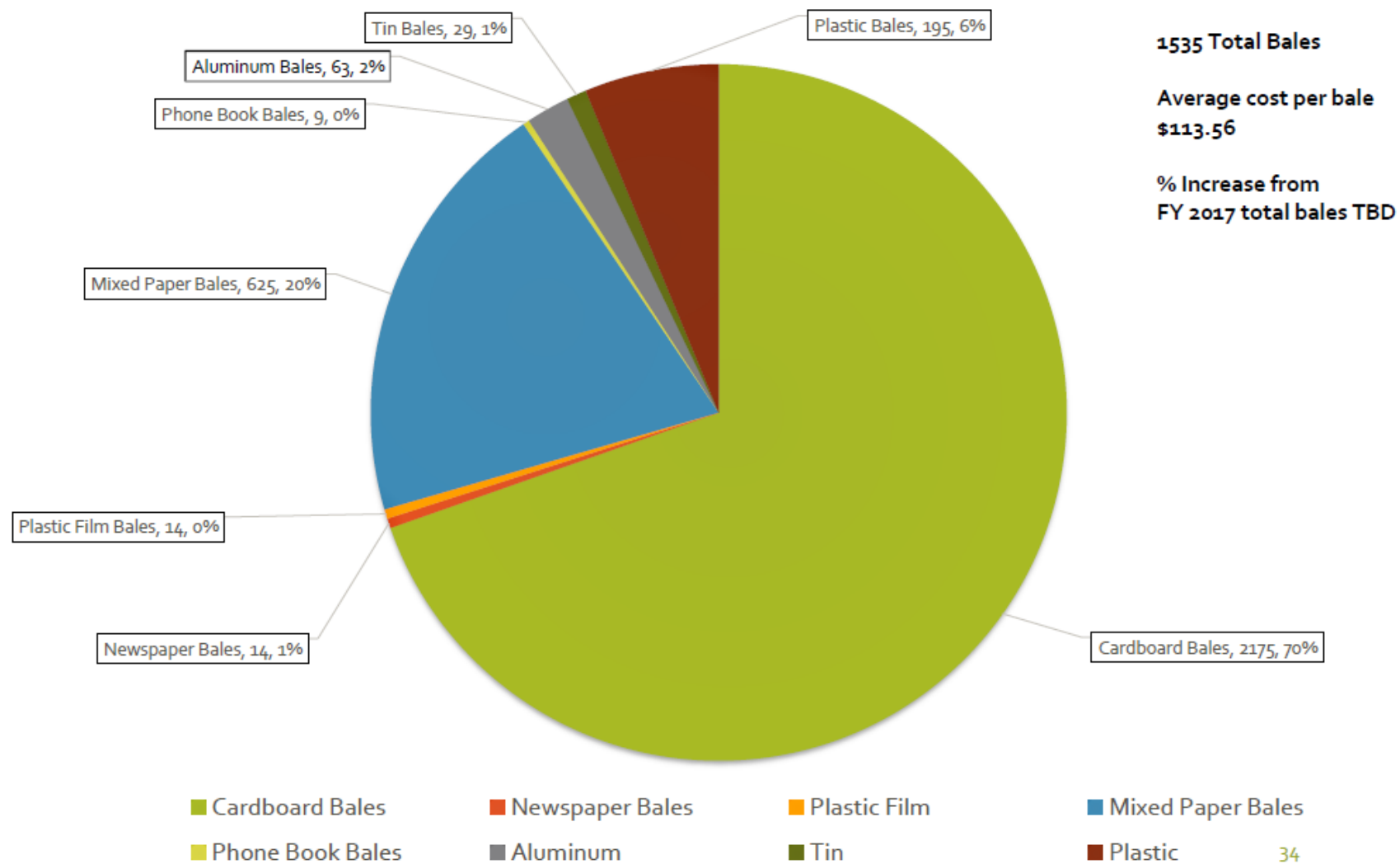
FY 2018 Expenditures:

\$174,318.49

FY 2018 RC Profit:

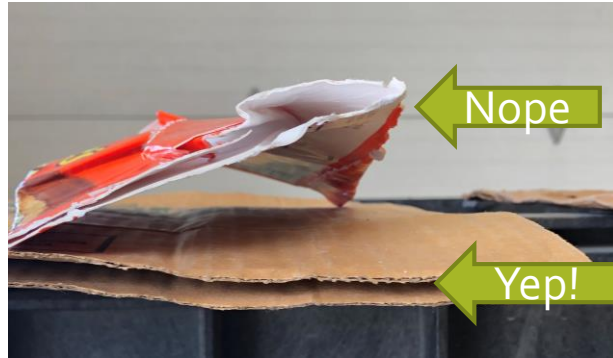
\$7,558.44

FY 18 Commodity In-take by Volume



HOW TO RECYCLE?

Cardboard



- 70% of our total commodities is cardboard.
- In Blaine County we have grocery grade cardboard.

Plastic

- Here in Blaine County we recycle plastics #1-#5.
- The biggest contaminants are...
PLASTIC BAGS!
- Plastics become more plastic containers, fiber for carpet and clothing.



Plastic Film

Expenditures:	EST. YRLY Cost:	Notes:
Salary & Benefits	(\$11,492.00)	6.5 HRS/ WK, 338 HRS/ YR @ \$34/ HR
Fuel	(\$385.00)	40 miles/ WK, 2080 miles/ YR = about 140 gallons of fuel @ \$2.75/ gallon
Vehicle Maintenance	(\$470.00)	Oil change, repairs, tires, misc.
Liners	(\$120.00)	
Wire	(\$116.50)	\$8.33 of wire per bale
Total:	(\$12,583.50)	

Revenue:	EST. YRLY Cost:	Notes:
Commodity Sale	\$1,575.00	Sold 14 Bales in F17 (1250 average pounds per bale) @ \$0.09/ LB after trucking fee applied
Overall Yearly Project Cost:	(\$11,008.50)	
Overall Cost per Bale:	(\$786.32)	



Recycle your Clean, Dry, Empty Plastic Bags and Film Packaging!

Plastics to Collect:

- LDPE / HDPE Films
- Newspaper Sleeves
- Bread Bags
- Product Wrap
- Cereal Liners
- Food Storage Bags
- Ice Bags
- Pellet Bags
- Produce Bags
- Dry Cleaning Bags
- Grocery Bags
- Case Overwrap
- Packaging Air Pillows
- Salt Bags

Drop Locations:

Athens' Grocery stores - these locations
 Maine County Annex Office Building
 Environmental Resource Center
 S & C Wine Importers
 Community School in Kalamazoo
 Kings Discount Store - L.L. Green
 Albertsons in Hales (Green)
 Valley Country Store - Family Dollar
 Lake's Pharmacy - A.C. Hinson Lumber
 Recycle Center at Ohio Gutch

Your plastic bags and wraps then become Earth-friendly composite decking & railing!

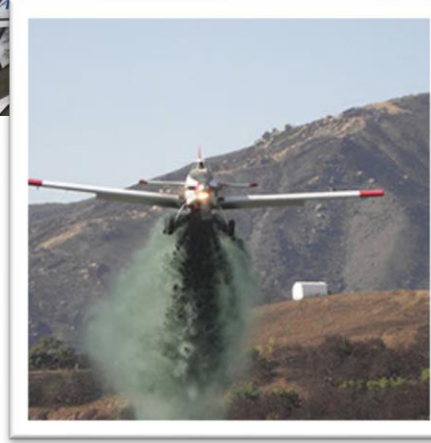
For more information go to trexrecycling.com
 800-BUY-TREX

Paper

Yes: Newspaper, Newsprint, Copy/Print Paper and color and size.



No: Shredded Paper, Magazines, Flatboard (Non-corrugated cardboard), no glossy, no plastic, and no metal.





Aluminum and Tin

In 6 weeks
recycled aluminum
and tin becomes
new aluminum and
tin cans, etc.



Other Materials

- Batteries
- Yard Waste
- Hazardous Household Materials
- Electronics
- Car Oils



INERT WASTE DIVERSION

Glass



Wood



Concrete

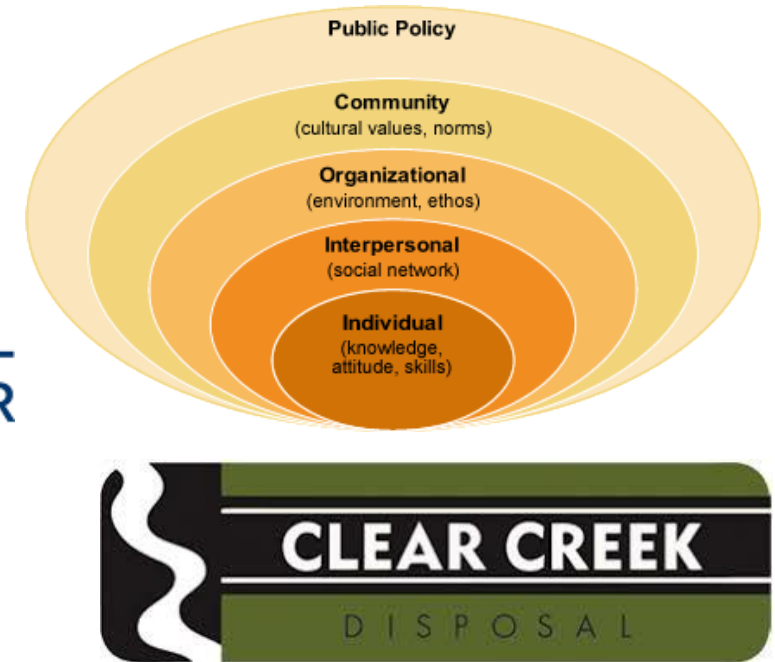


WHAT NEXT?

Outreach

EVENTS

- Earth Day: Monday, April 22nd
- Worked with WATER Club to provide support in Earth Day Event (met students)
 - Provided 700 Reusable Bags
 - 500 Stainless Steel Straws
 - Created and provided flyers for students to pass out
- ERC Clean Sweep: Saturday, May 4th
 - Providing Recycling Education
 - Brought swag, flyers, and examples of paper to recycle
- Pioneer Valley Montessori: Tuesday, May 7th
 - Classroom came to the Recycle Center for a tour.
- Hailey Home and Garden Show: May 18th, all day
 - Campion Ice house: 500 people attended on Saturday
 - Provided recycling education
 - Flyers, swag, examples of paper to recycle
- June 22nd, Party for the Plant
- Big Wood School Tour
 - 3 groups of students
- Coming Up:
 - Riverfest Recycling Booth



What is happening?

- Green Business Regional Recognition Program
- Updating Flat Materials
- Working with ERC Intern to Create Videos
- Tours
- Volunteer Program



Be a Good SORT



Decrease Your Waste

THANK YOU!!!

Any questions?