



## City of Ketchum

### CITY COUNCIL MEETING AGENDA MEMO

Meeting Date:  Staff Member/Dept:

Agenda Item:

#### Recommended Motion:

"I move to authorize staff to issue a letter of support for ITD to initiate night work in order to decrease daytime travel impact."

#### Reasons for Recommendations:

- Knife River was selected by ITD to complete the project and has recently mobilized on site
- City staff met with contractor to understand construction sequencing and schedule
- Staff plans to give regular updates to the City Council and hold community/neighborhood meetings as needed

#### Policy Analysis and Background:

- May: Potential intermittent flagging for Intermountain Gas work
- May – July (current conditions): "Stage 1" – two-lane travel from Elkhorn to Serenade (Attachment 1)
  - Prep work for Trail Creek Bridge construction (August):
    - June 3<sup>rd</sup> - 13<sup>th</sup>
    - Gem Street to River – One direction of traffic (with flaggers) if not able to conduct night work
    - Work hours: 9am - 7pm
      - Option of 10pm - 7am, if preferable
      - **Approving night work will enable two-way traffic flow during the day**
      - Attached approval letter required (Attachment 2)
  - Mid-June, return to Stage 1
- Bridge work: "Stage 1A" (update not reflected in Attachment 1)
  - August 1<sup>st</sup> - Nov 1<sup>st</sup>
  - Northbound only from Gem Street to River Street
  - Serenade will be free-flow to/from Highway 75 with stop sign on Southbound Hwy 75 at Serenade
- Retaining wall construction at Gem Street
  - August 14<sup>th</sup> - September 15<sup>th</sup>
  - Northbound only Serenade to River St
  - Return to "Stage 1A" on September 15<sup>th</sup>
- ITD's 'Elkhorn Road to River Street' project page is [itdprojects.idaho.gov/pages/idaho75](http://itdprojects.idaho.gov/pages/idaho75)
  - The public can sign up for emailed construction updates

#### Sustainability Impact:

Project includes new sidewalks and dedicated bikes lanes on both sides of highway from Serenade to River Streets.

Financial Impact:

None OR Adequate funds exist in account:	None
--	------

Attachments:

1. 4-stage map of construction 2025/2026 construction plans
2. Night work approval letter

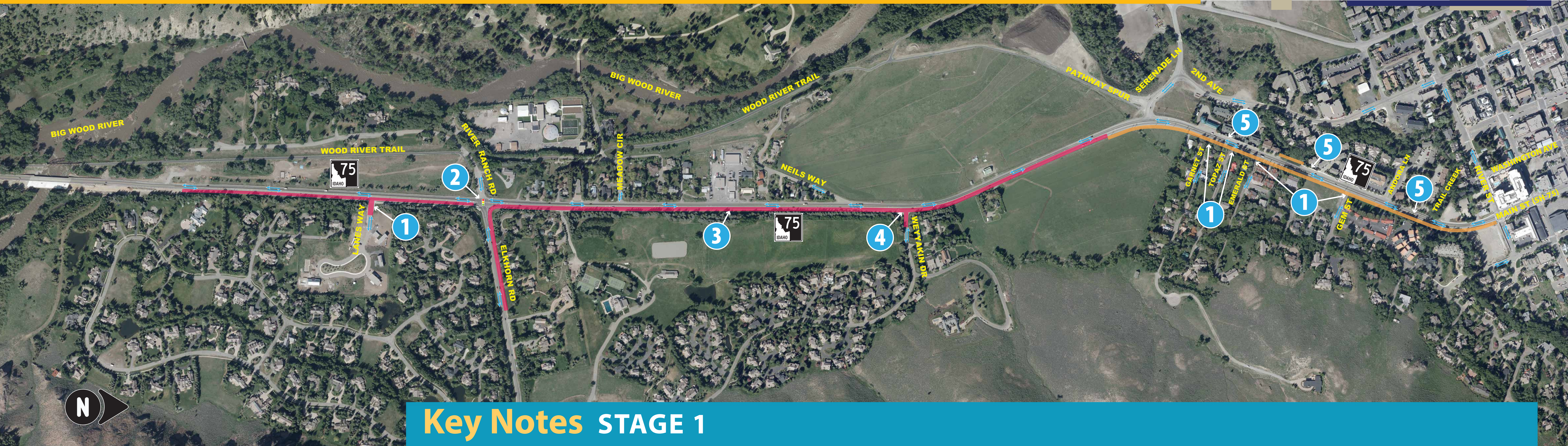


# Stage 1 Construction

ANTICIPATED FEBRUARY TO JULY 2025



Elkhorn Road  
to River Street



## Key Notes STAGE 1

### LEGEND:

- Construct roadway and utility relocations on east side of SH-75 and north side of Elkhorn Road.
- Construct utility relocations and retaining walls.

- 1 Maintain access on most side roads during construction.
- 2 Northbound and southbound SH-75 left turn lane at Elkhorn Road closed for a few weeks.
- 3 SH-75 center turn lane open at gas station except for a short-term closure.
- 4 Weyyakin Drive at SH-75 closed short-term.
- 5 Maintain existing sidewalk on west side of SH-75 and Trail Creek Bridge. On-street parking will not be available.



# Stage 2 Construction

ANTICIPATED JULY TO NOVEMBER 2025



Elkhorn Road  
to River Street



## Key Notes STAGE 2

- 1 Maintain access on most side roads during construction.
- 2 Northbound and southbound SH-75 left turn lane at Elkhorn Road closed for a few weeks.
- 3 SH-75 center turn lane open at gas station except for a short-term closure.
- 4 Sun Valley Pathway to remain open during construction. Pathway width may be narrowed for short durations with the use of flaggers.
- 5 Maintain existing sidewalk on west side of SH-75 and Trail Creek Bridge. On-street parking will not be available.
- 6 Northbound Trail Creek Bridge construction expected to occur between August 1 and mid-November in 2025. *(See Trail Creek Bridge board for detour information.)*

### LEGEND:

- Traffic on newly constructed east side of SH-75 and north side of Elkhorn Road.
- Construct roadway and utility relocations on west side of SH-75 and south side of Elkhorn Road.
- Continue utility relocations and retaining wall construction.

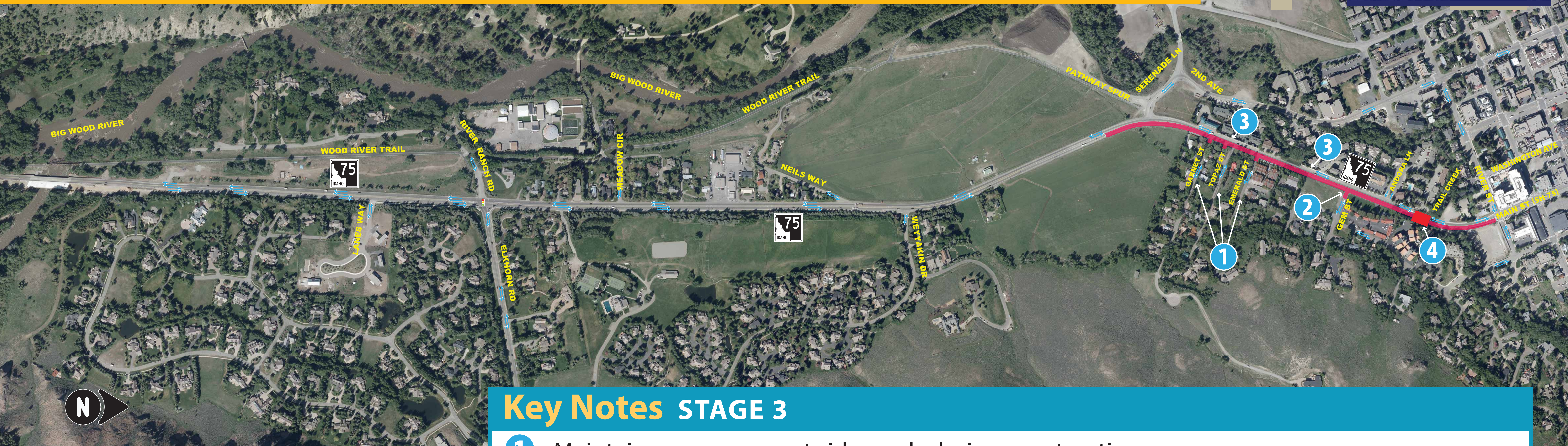


# Stage 3 Construction

ANTICIPATED FEBRUARY TO JULY 2026



Elkhorn Road  
to River Street



## Key Notes STAGE 3

- 1 Maintain access on most side roads during construction.
- 2 Gem Street closed short-term.
- 3 Maintain existing sidewalk on west side of SH-75 except between Andora Lane and River Street during Trail Creek Bridge construction. On-street parking will not be available.
- 4 Southbound Trail Creek Bridge construction expected to occur between President's Day and Memorial Day in 2026. (See *Trail Creek Bridge board* for detour information.)

### LEGEND:

- Traffic on newly constructed SH-75 and Elkhorn Road. Work complete south of Serenade Lane.
- Construct roadway and utility relocations on east side of SH-75, north of Serenade Lane.



# Stage 4 Construction

ANTICIPATED JULY TO OCTOBER 2026



Elkhorn Road  
to River Street



## Key Notes STAGE 4

- 1 Maintain access on most side streets during construction.
- 2 Maintain access on Serenade Lane except for a short-term closure where traffic will be detoured along SH-75, River Street and 2nd Avenue.
- 3 The Spur Trail and parking will remain largely open during construction. However, the trail will be closed during construction of Serenade Lane and as needed.
- 4 New sidewalk on east side of SH-75 is available for pedestrian use, including across the Trail Creek Bridge. On-street parking will not be available.

### LEGEND:

- Traffic on newly constructed east side of SH-75, north of Serenade Lane.
- Construct roadway and utility relocations on west side of SH-75.





City of Ketchum  
City Hall

April 5, 2025

Justin Schoolcraft  
Idaho Transportation Department  
216 S Date St  
Shoshone, ID 83352

Dear Mr. Schoolcraft:

This letter is to inform you that the City of Ketchum approves night work for drilling the “Drilled Shafts” for Trail Creek bridge in June 2025, that the hours of operation from 10pm to 7am is acceptable. The City of Ketchum acknowledges that once the stated operation starts at night it will continue at night until finished even if the noise and lights become an issue with the public.

Additionally, we acknowledge that we are aware the operation is intended to only last 7 days but may take longer depending on smoothness of the operation, equipment issues, site conditions etc.

Please feel free to contact me with any questions at 208-806-7009 or [bwhipple@ketchumidaho.org](mailto:bwhipple@ketchumidaho.org).

Sincerely,  
Ben Whipple  
Sr. Project Manager