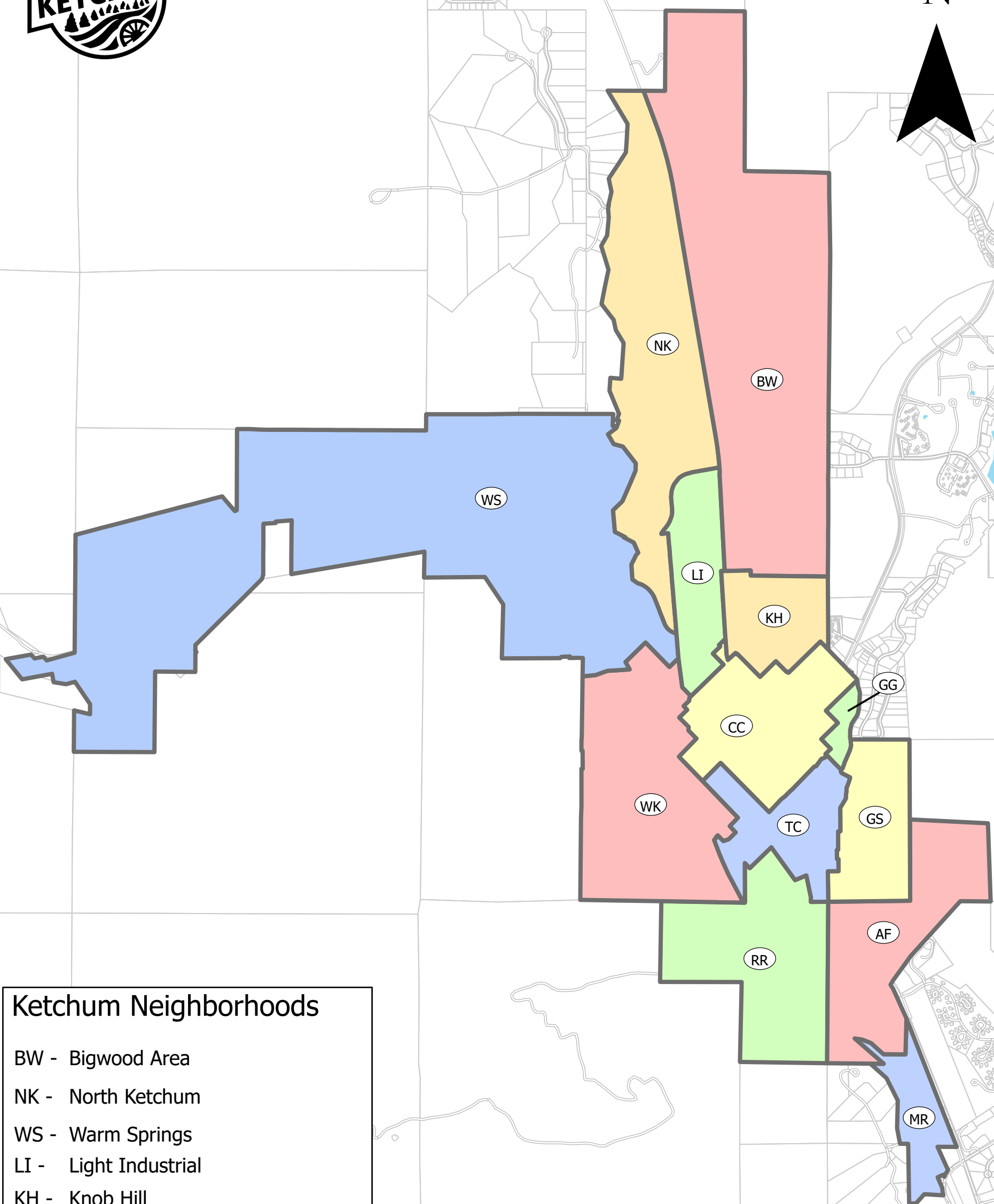


City of Ketchum Neighborhoods



N

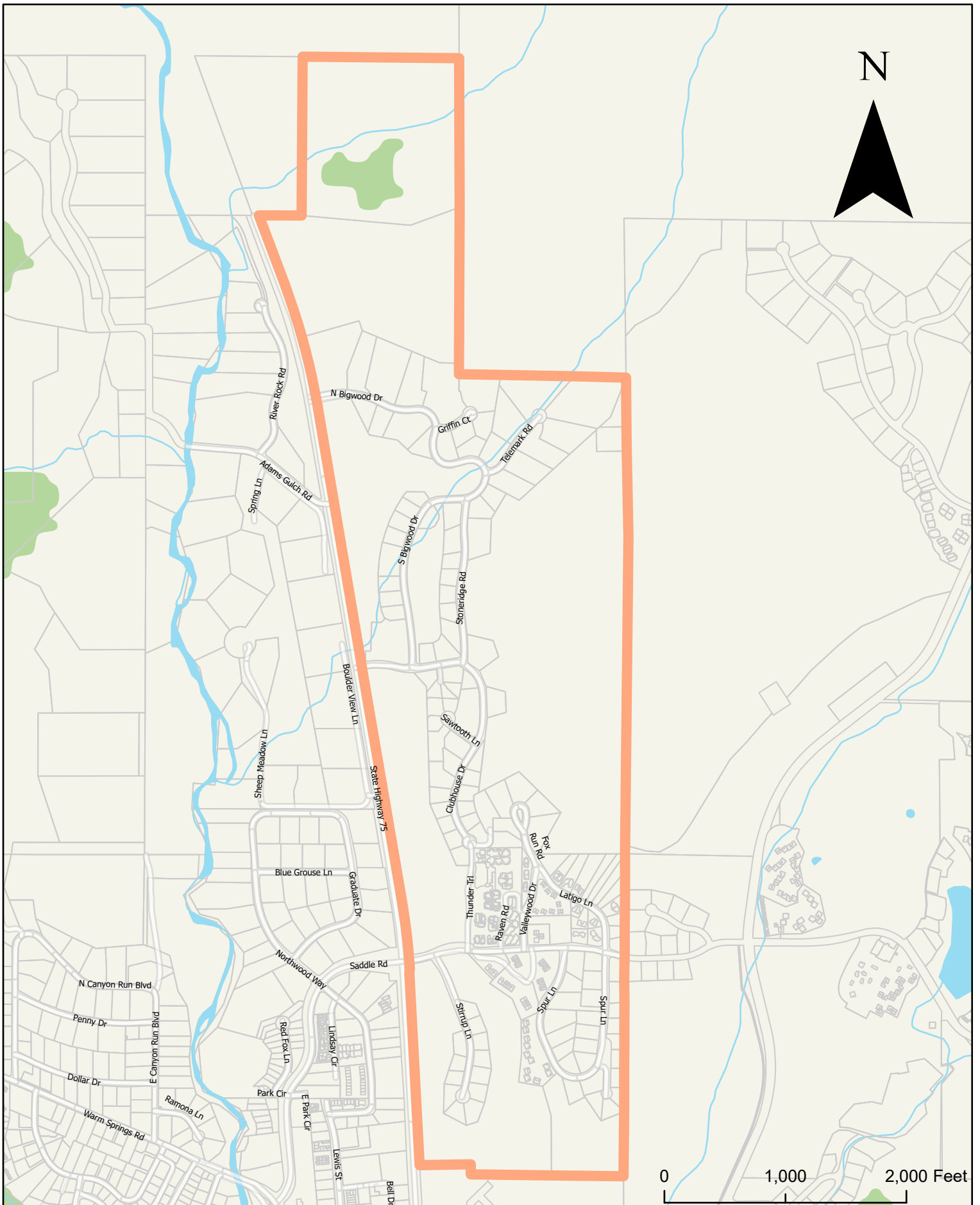


Ketchum Neighborhoods

- BW - Bigwood Area
- NK - North Ketchum
- WS - Warm Springs
- LI - Light Industrial
- KH - Knob Hill
- CC - Community Core
- GG - Gopher Gulch
- GS - Gem St
- TC - Trail Creek
- WK - West Ketchum
- RR - River Run
- AF - Agricultural & Forestry
- MR - Mortgage Row

0 0.25 0.5 1 Miles

Bigwood Neighborhood



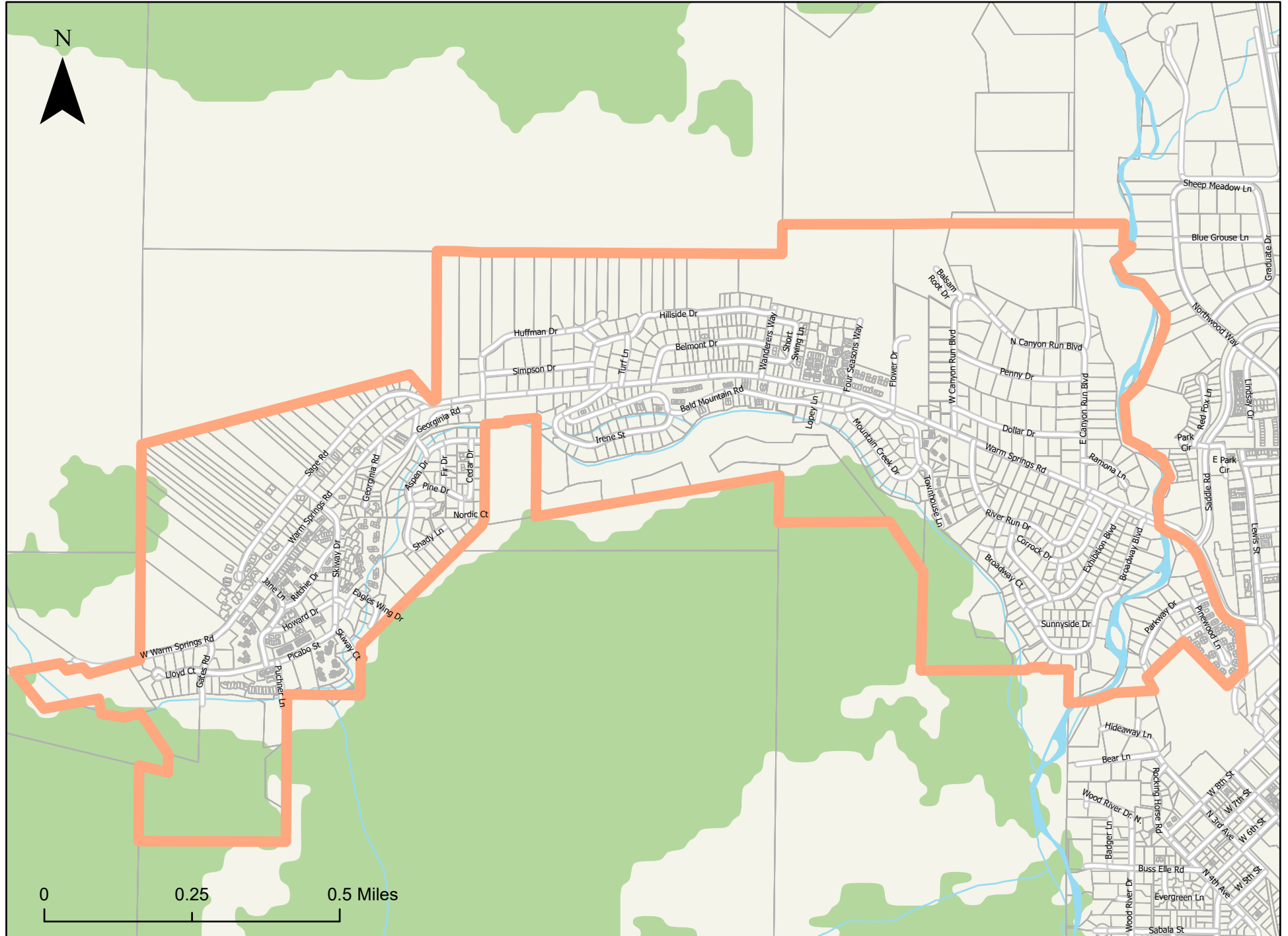
Source: Neighborhood boundary derived from 2005 Walsworth & Flowers study, GIS data obtained from Blaine County

Northwood Neighborhood



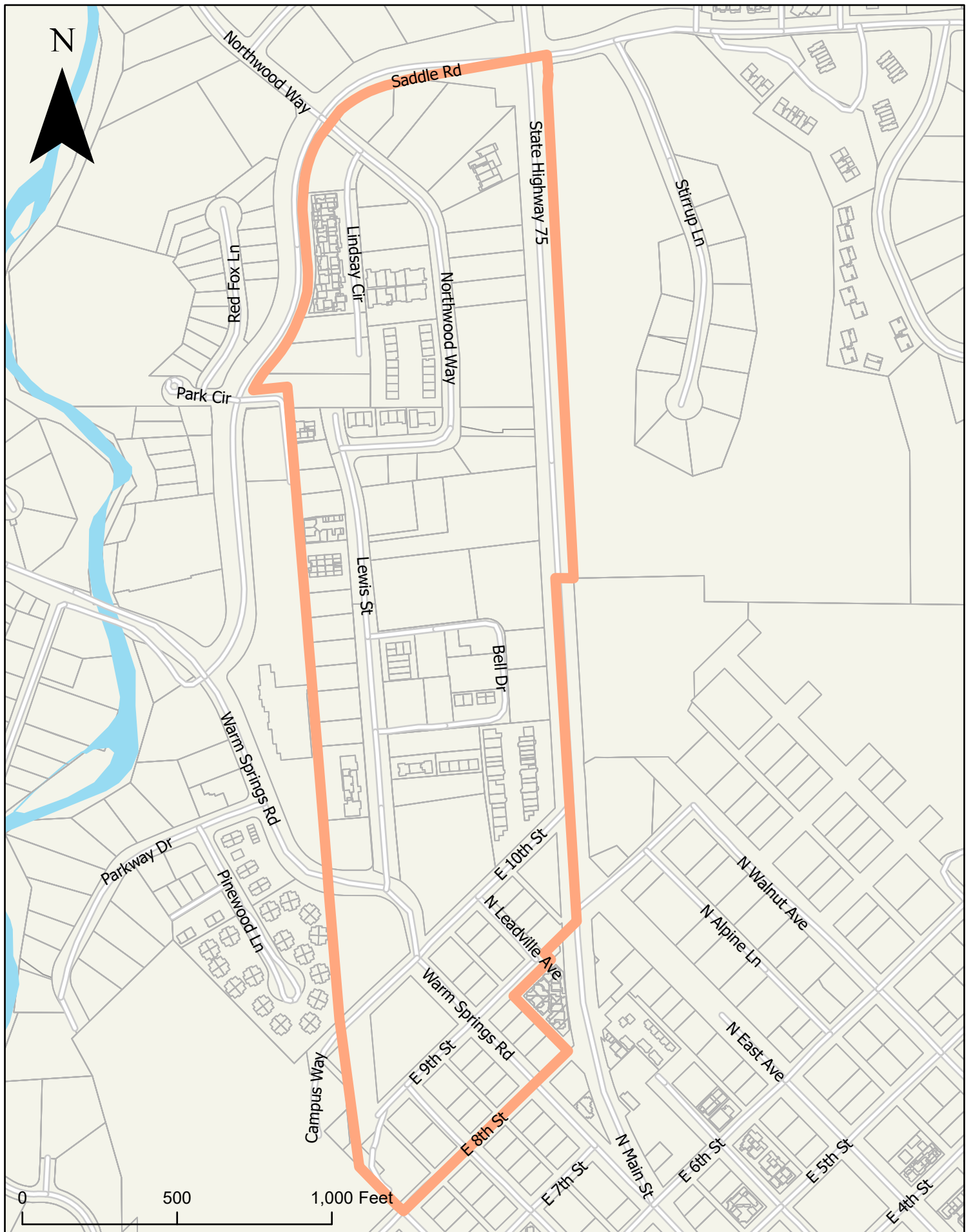
Source: Neighborhood boundary derived from 2005 Walsworth & Flowers study, GIS data obtained from Blaine County

Warm Springs Neighborhood



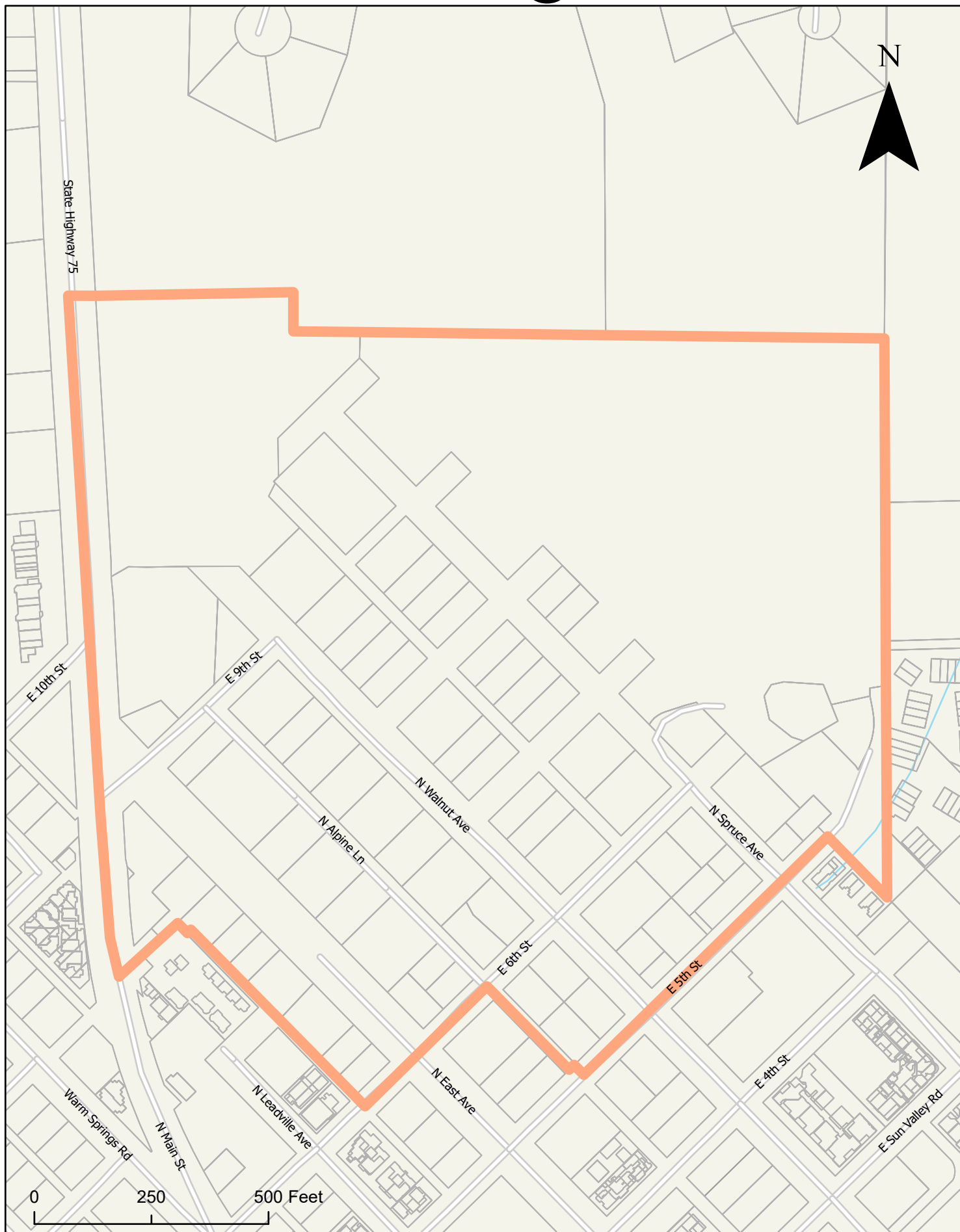
Source: Neighborhood boundaries derived from 2005 Walsworth & Flowers study, GIS data obtained from Blaine County

Light Industrial Neighborhood



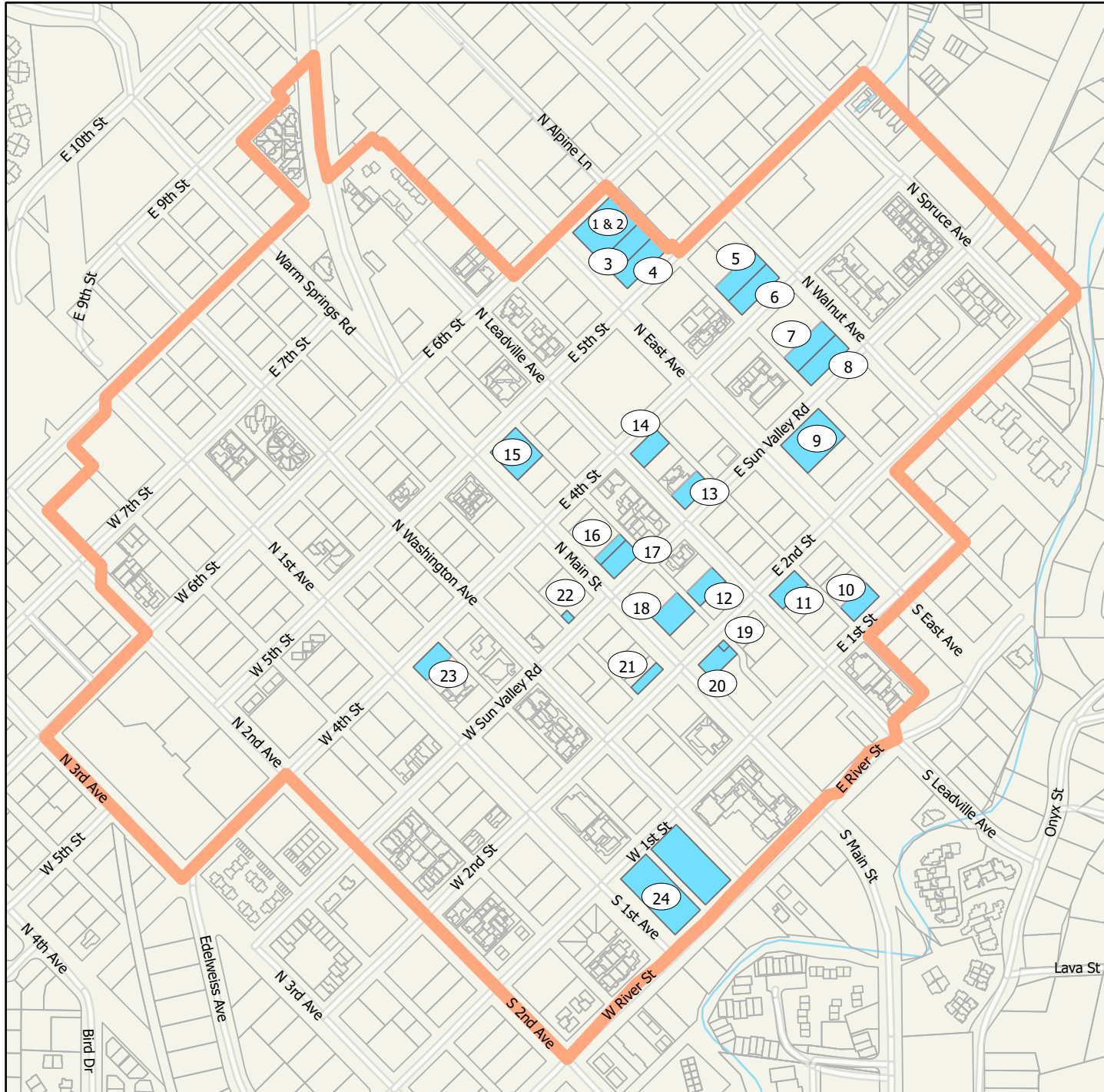
Source: Neighborhood boundaries derived from 2005 Walsworth & Flowers study, GIS Data obtained from Blaine County

Knob Hill Neighborhood

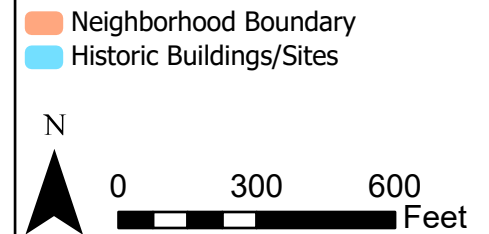


Source: Neighborhood boundary derived from 2005 Walsworth & Flowers Study, GIS data obtained from Blaine County

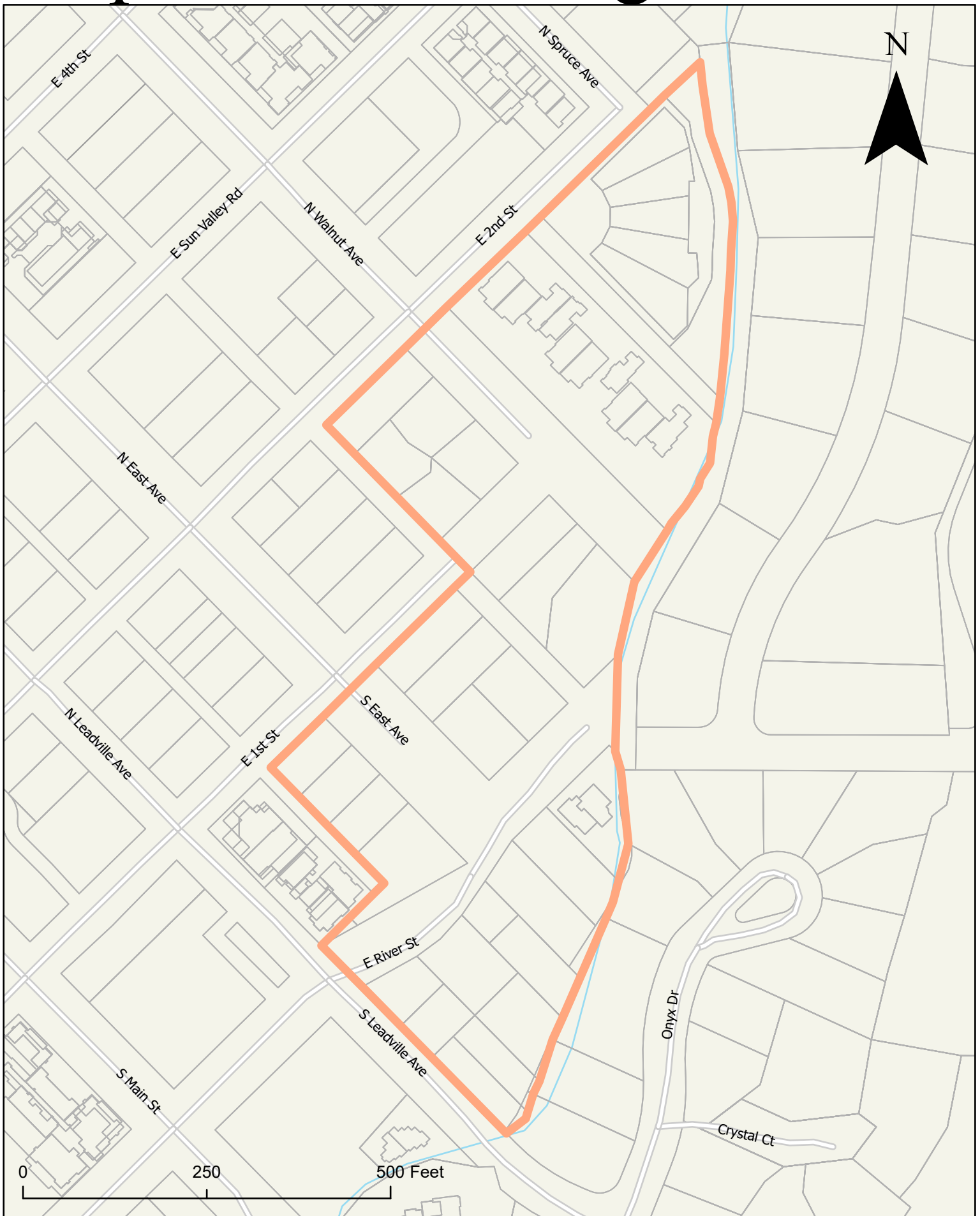
Community Core Historic Sites



1. Louie's/The Church (Picket Fence/Annex)
2. Thornton House (Picket Fence)
3. E.B Williams House (Ketchum Grill)
4. Bonning Cabin
5. George Castle Cabin
6. Jack Frost Motel (Gold Mine Consign Building)
7. Community Library/Gold Mine Thrift Store
8. Michel's Christiania Restaurant
9. Horace Lewis Home (Elephant's Perch)
10. McCoy/Gooding/Miller House (Residence)
11. Alonzo Price/Esther Fairman House
12. Bert Cross Cabin (Vintage Restaurant)
13. Fagan Property (Country Cousin Store)
14. St. Mary's Catholic Church (Mesh Gallery)
15. Former Post Office (Former Formula Sports)
16. Pioneer Saloon
17. Comstock & Clark Mercantile (Enoteca Restaurant)
18. Ketchum Kamp Hotel (Casino)
19. First Telephone Co. (Chapter One Bookstore)
20. Lewis Bank (Rocky Mountain Hardware)
21. Greenhow & Rumsey Store (Culinary Institute)
22. Dynamite Shed (TNT Taproom)
23. McAtee House (Former Taste of Thai)
24. Forest Service Park

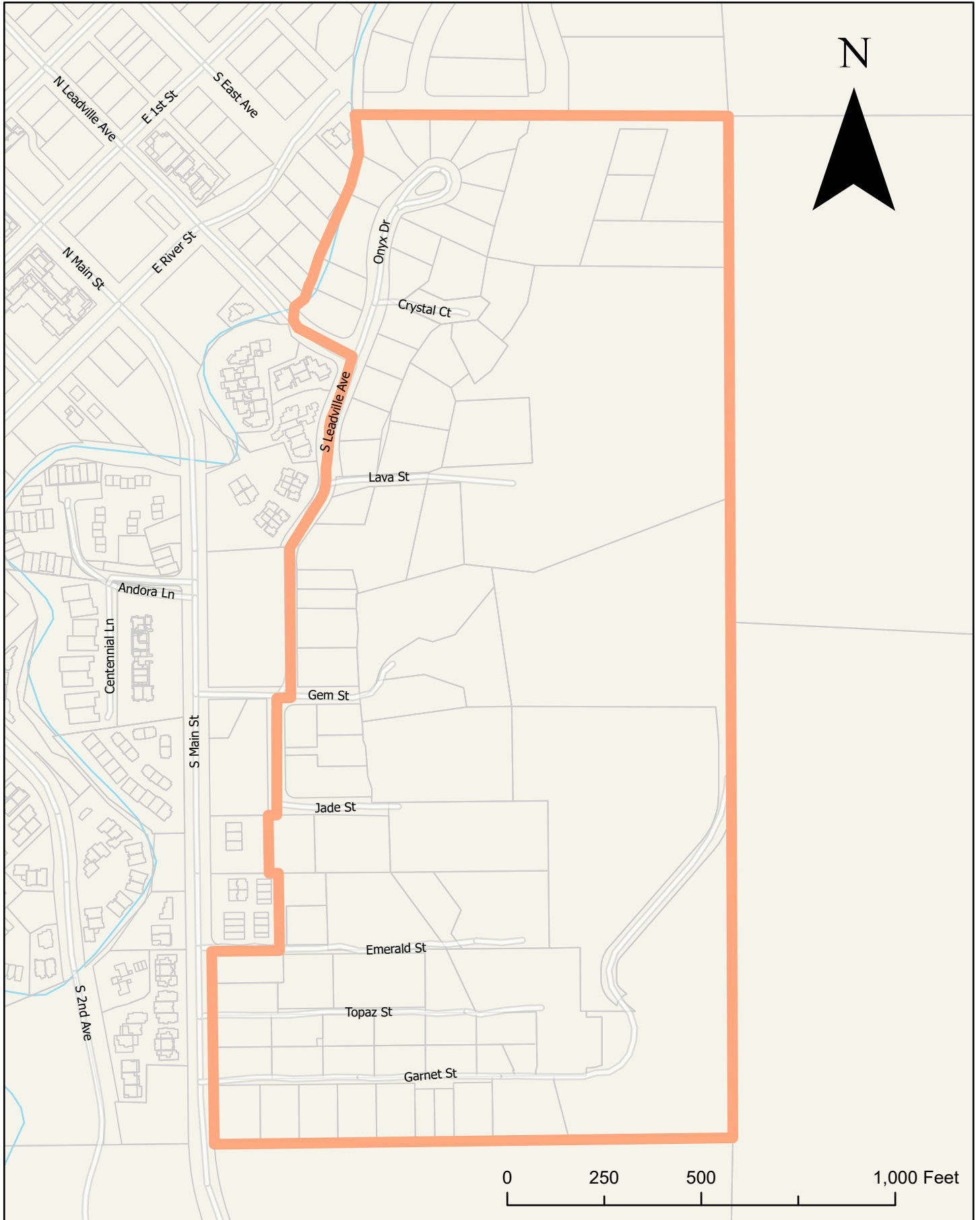


Gopher Gulch Neighborhood



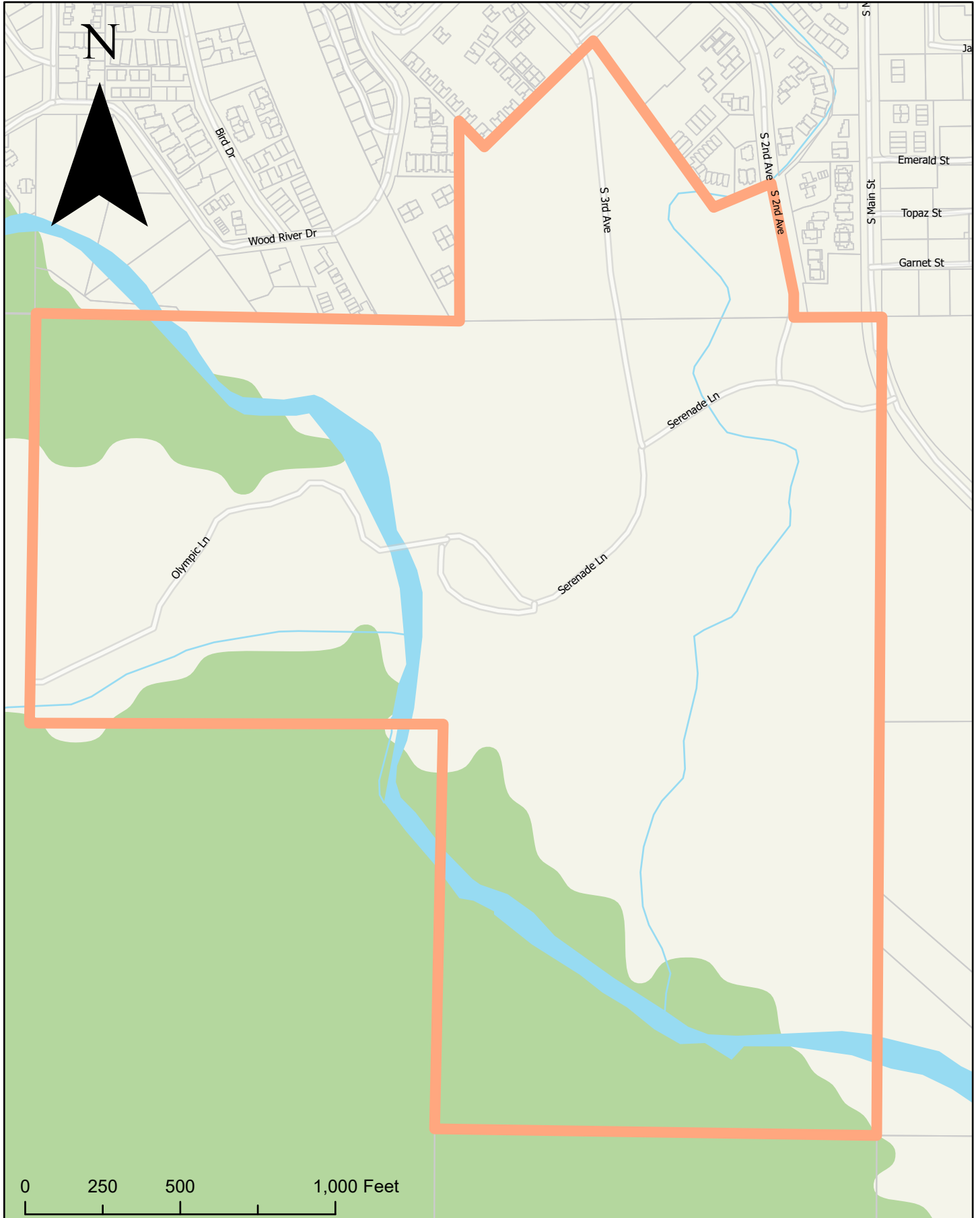
Source: Neighborhood boundary derived from 2005 Walsworth & Flowers study, GIS data obtained from Blaine County

Gem St Neighborhood



Source: Neighborhood boundary derived from 2005 Walsworth & Flowers study, GIS data obtained from Blaine County

River Run Neighborhood



Source: Neighborhood boundary derived from 2005 Walsworth & Flowers study, GIS data obtained from Blaine County

