



City of Ketchum

KETCHUM ARTS COMMISSION MEETING AGENDA MEMO

Meeting Date: Staff Member/Dept:

Agenda Item:

Recommended Motion:

I approve the artwork piece selected by the majority of present Arts Commissioners to be installed this year for the Sun Valley Road and Spruce Avenue exhibition.

Reasons for Recommendation:

Five artists submitted 10 qualifying pieces of artwork during the last two rounds of calls to artists for the Sun Valley Road and Spruce Avenue exhibition.

All artists who submitted art for the Art on 4th call to artists have agreed to have their work considered for the Sun Valley Road and Spruce Ave. location as well.

All submissions appear to meet the installation requirements.

Policy Analysis and Background (non-consent items only):

Sustainability Impact:

None OR state impact here:

Financial Impact:

None OR Adequate funds exist in account: Adequate funds exist in account

Attachments:

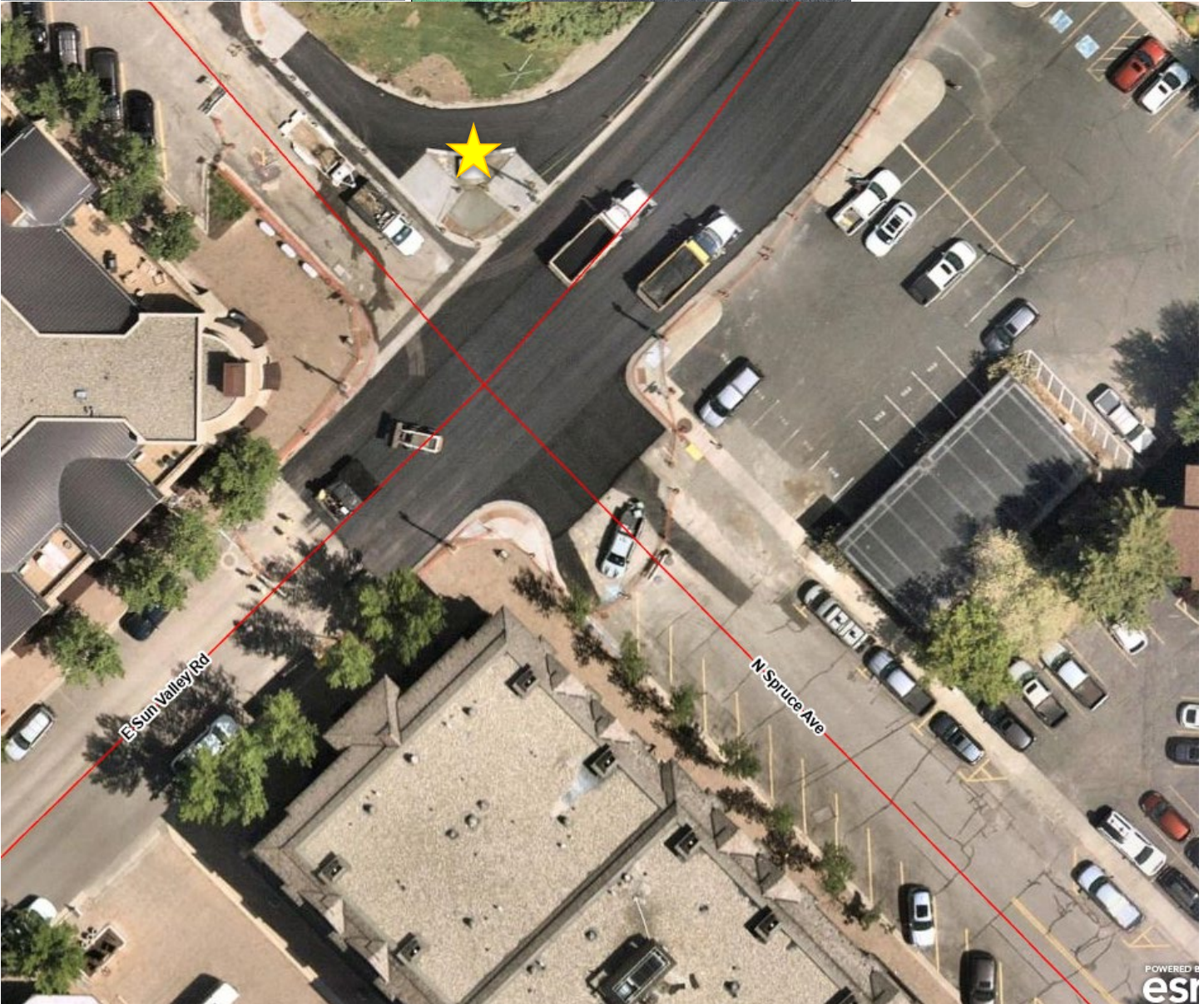
1. Art installation location
2. Ascension: steel with rust patina

3. Mountain Horse: bronze
4. Modern Man: direct metal sculpture
5. Transparencies in Time: Cuahpohualli embedded in ethnopoetic language poetry
6. Epiphany: direct metal sculpture
7. Lively Spiral with Rust Spots: steel pipe
8. Floating Spiral with Rust Spots: steel pipe
9. Dots and Lines: steel pipe
10. Spotted Spiral: steel pipe
11. Brush Stroke Spiral: steel pipe

Art installation location

Sun Valley Road and Spruce Avenue

On the pedestal in the north east sidewalk corner of Sun Valley Road and Spruce Avenue.



Ascension

Medium: Steel with rust patina

Dimensions: 132" high x 56" wide x 33" deep

Installation method/requirements: To be mounted to a minimum 4" thick x 24" x 48" concrete pad using (4) 3/8" concrete strike anchors.

Note: this is a new sculpture. The patina was applied to the top portion on 5-13-2024 and will naturally blend to the darker color of the bottom portion within a few weeks.



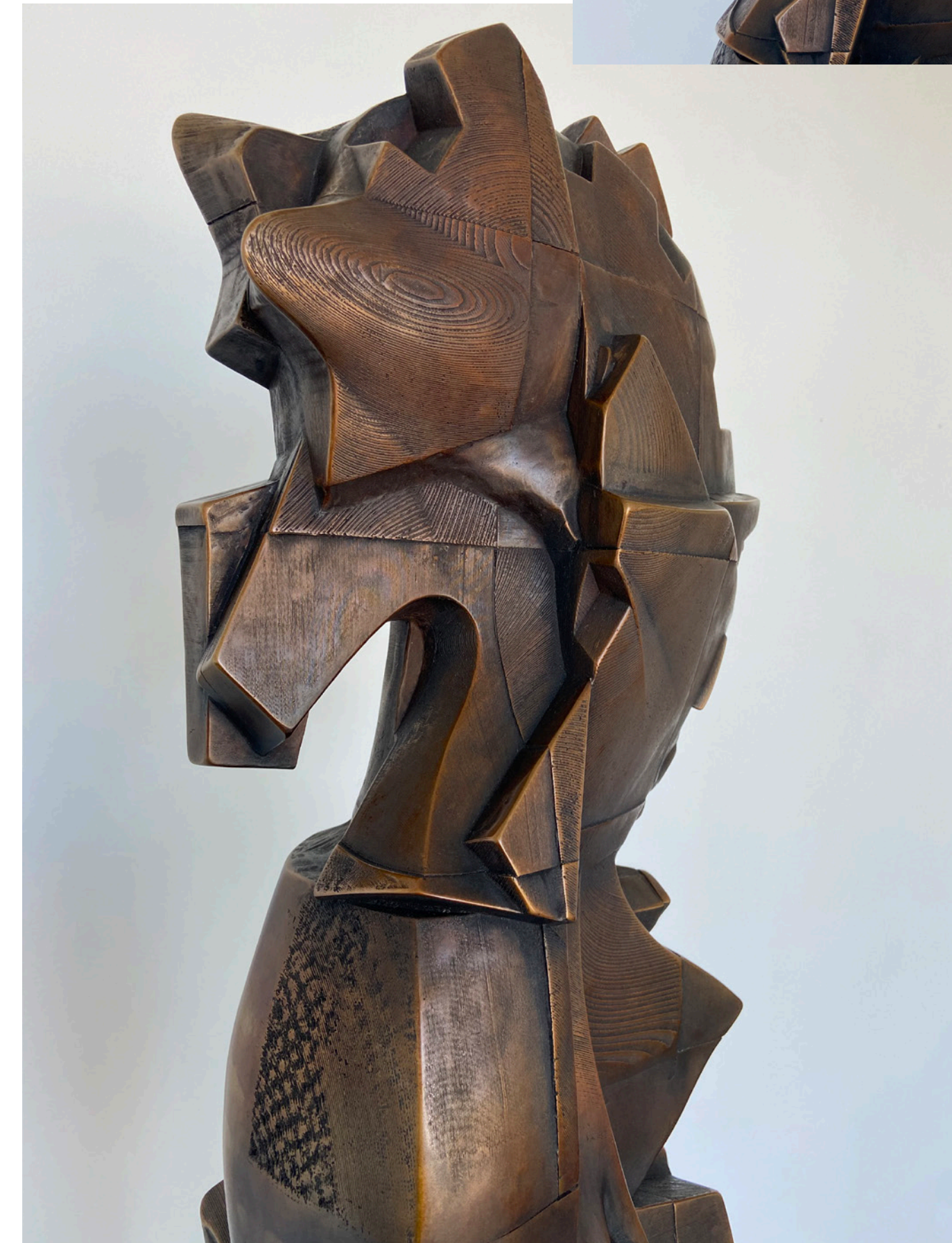
Mountain Horse

Medium: Bronze

Dimensions: 74 x 16 x 16 inches

Installation method/requirements:

This sculpture has a steel base with bolt holes. It can be welded to a steel pedestal or bolted into concrete.



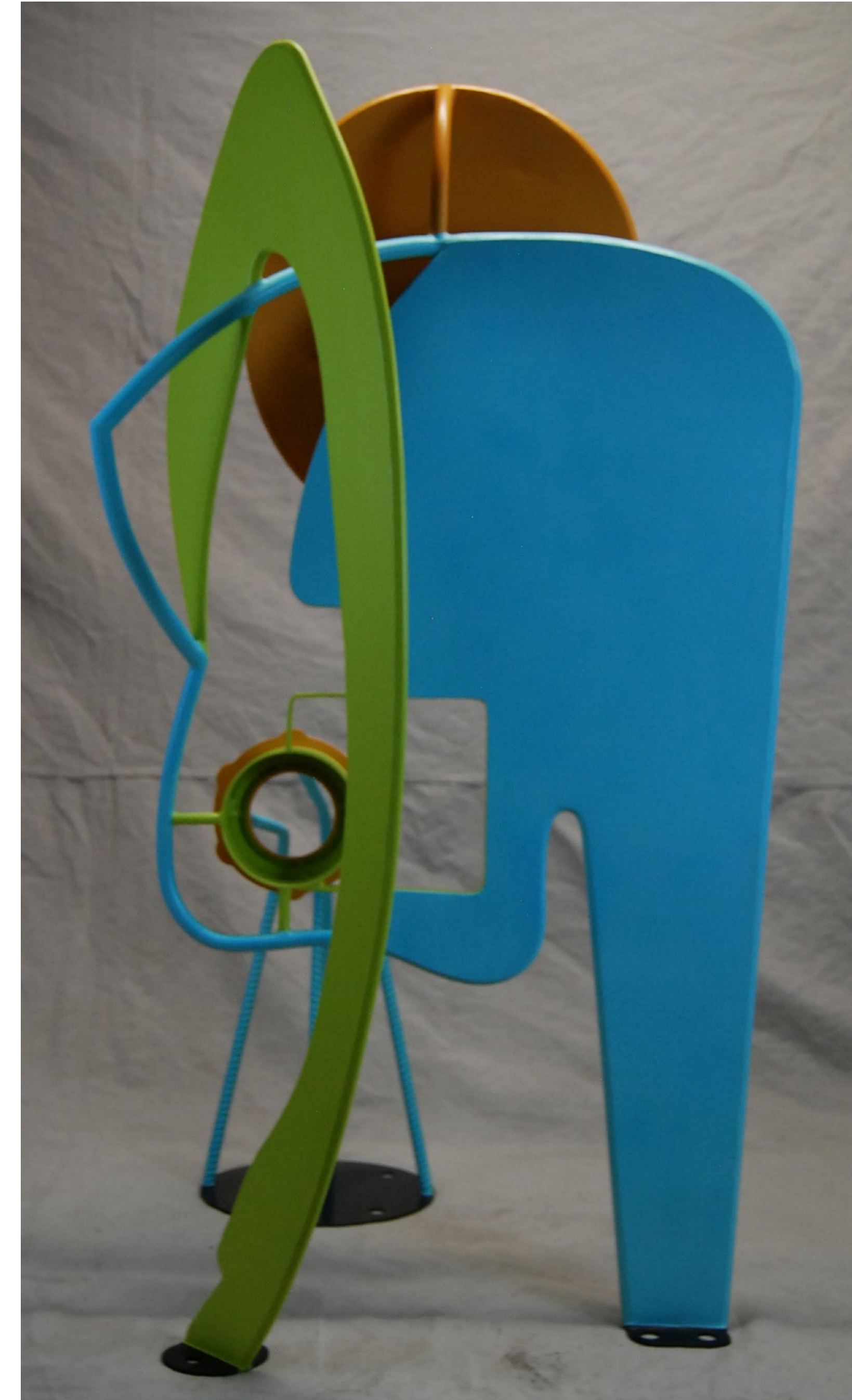
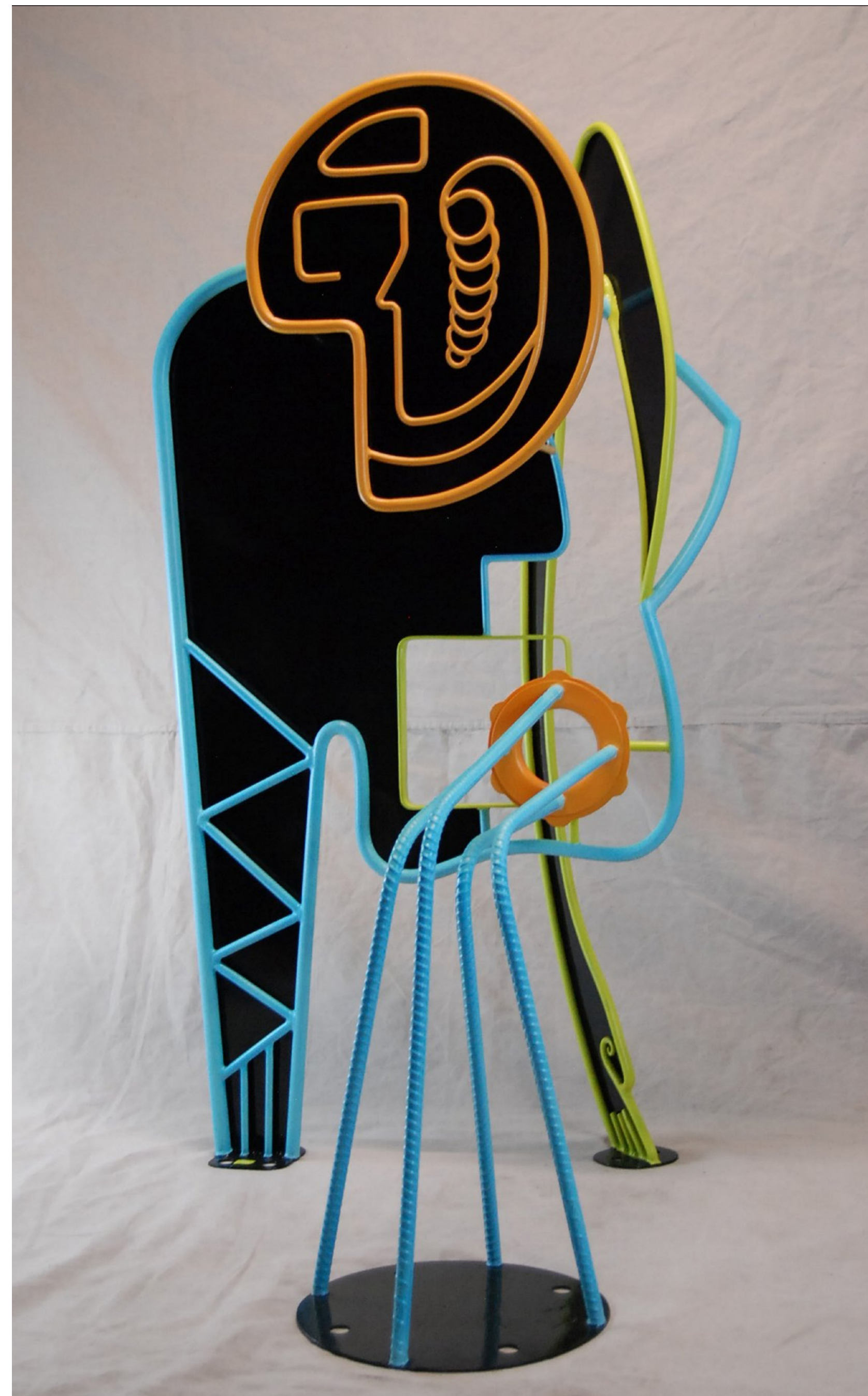
Modern Man

Medium: Direct Metal Sculpture (made out of mild steel, finished with oil base paint)

Dimensions: 55" x 30" x 37"

Installation method/requirements:

Mount/install with (10) 1/2" concrete lags. Electricity on site. Approx weight 150lb.



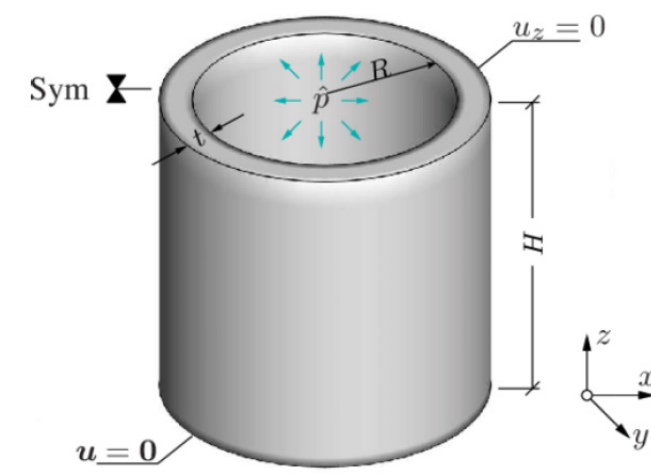
Transparencies in Time

Medium: Cuahpohualli embedded in ethnopoetic language poetry

Dimensions: 7' x 7' x 3' (opt. 1) or 8.5' x 8.5' x 3' (opt. 2)

Installation method/requirements: on-site construction required, which would take a couple months. Would also include multimedia powered by solar panels (audio playback, lighting, and ability to rotate the artwork)

Shape/construction



Similar artist installations



Artwork/ written poems displayed in the Plexiglass

Words locate silence: nahualli (Nahuatl) plural form of Nahual - speaking people / nombre que se dio a las naciones cubas que hablan la lengua mexicana [6] Lightning in the breads this poetic stream. All I got is the ink to bleed. The crows reflect black panels glass sheets and/or shiny threads humming birds razor sharp light indecent. Ghost hunt the plains. TTONALILLO's statues, spirit, soul. Spirit returns are the essence one breathes. TEZCATLIPUCA, mirror king as writing this blue lightning inside the temezcalitlapi sweet lodge ceremony. NEXTL, James condenser / mirror in the memories blue voices coalesce raindrops of flowers in new thoughts bright as sunrise burn night stars. TLAHUICZALPANTECUFLI el señor de la aurora/Venus first light of dawn breaks past the jade in glass silks shreds language. We do not all see the same. metzli matlacay poetry speaks in words/facerate shard crite language. Na- steeped in the bone stone pyramid corri- jade soul earth- between skin earth red sky, emerald glass silks cuts. you breathe in- lore when conch thunderstorms in the shwecci etzaccualitl macul living proof of multiple dimen- code as silks splinters into and pseudonyms hidden...

Udicuahuatxer de las salinas -you can feel the coded in. So when it comes you got too be ready 7th beccana on quahuall that a fluffy/transparenci/hydrolytically. Phend of locutitotitl our xian chhuat/woman of the salt-dunes -blue and white- calendars overridelapses in the spacetime continuum. Today's mess in how ethereal entities survive hour - glass. Silks cuts what you're thinking edged/ heteroglyphic, stables in the neural picture are transcribing into ocean breeze. Energys in optical cortex simulated in between dreams. Weaved in the carbon -14 frame as pyra- mid shift here: meld in the melann- arctic earth infused. Peasants in the fields tend the harvest-eyes color of sunstars truck glare in the iris. Sinakoa respira en estos triangulos -que bradiza la memoria de obsidiana. Shattered green volcanic rocks in the poetic men. Streams flowing water/intertemporally breathing bet- wail chhuatitl y desaparecidos. Rhytmic form cuts to the essence compresses owl feathers in the full moons stars/breath- es- socks carved into the DNA. Song & stories thread in the- re words as constellations.

Transparent thoughts in the poolside eclipse that's hard you see. When there's a langu Age-but no one to speak it too Nahualacualli/Purepecha huchan un picca -por mullista F.azca. Carry over eight how language bleed in yellow spider suspended annotation. Adamantine steel. It's the child in me to breathe these images into 3 dimensions its. One: 17P cycle guards chhuac staff fill nahal inqutl its the period of repose. Tacahuicelotl it's the fullness transparency how these words were shard into/ Belowst visual cortex. Equimill the dark eyed scriber hollowed conodes carving. Tezcatlipoca -read in the periphery. 1510 a moche: teze (yuzum) pygmy blood Within this art an erased camera zoom you can read behind these words tales. Desert sands inscribed in the DNA matted ethios shard jagged flint. Terns encoded in a topography scarred with an unbalanced cross/double Helix 3 stripes on the right temple tear stripes of the jaguar how silence Weighs. Hayshah blunder dreams breathes into thallobiduum Eagle feathers breeze the melanin darkens blue lightning night/waifage ceremony -spirits awaken the memory I landscapes. Slowly time engulfs streams of consciousness. 2,bratis in the above count read a seven need period Seduction four silks. Farasico to edit/lovedo in Memoria and so (a hat breathing in multiple dimensions. Sun's refract rainbows kaleidoscope casts stars. Lobo Xocoyotzin there are transparencies the minds I. Winistom's lexicon of brown white lightning how words immaterial face- ratios in time. Step back and you will see a pyramid shaft in the (pao)lirne condensate a cascade -when you palm your hands. Organic poets cut deep in the spiritlessness: displacement lateral en to que ves. Ours reflect jade screens in plish dark forest whiteholoch shades of cerise/moss embed ded in virides frosts. Petroglyph origins of the carbon -14/matrix: oceans scoured from geography & winds fissures! It's a satiation that u are reading stone words cut under- world corridors in Tonine. Besides u see invisible jaguar open scrolls.

Chicome Itzucitl Ahuacatl. Yin Apat

Chicome Itzucitl Ahuacatl. Yin Apat

Epiphany

Medium: Direct Metal Sculpture (Picasso inspired horse: made out of mild steel and finished with oil base paint)

Dimensions: 105" x 36" x 89"

**Installation method/
requirements:**

Electricity on site. (5)
3/8 inch concrete lags.
Weight approx. 250lbs.
2-3 additional men to help with placement.



Lively Spiral with Rust Spots

Medium: Steel Pipe

Dimensions: 102" x 24"
x24'

**Installation method/
requirements:** A
simple anchor bolt in
the cement to secure
the base



Floating Spiral with Rust Spots

Medium: Steel Pipe

Dimensions: 101" x 22"
x22"

**Installation method/
requirements:** A
simple anchor bolt in
the cement to secure
the base

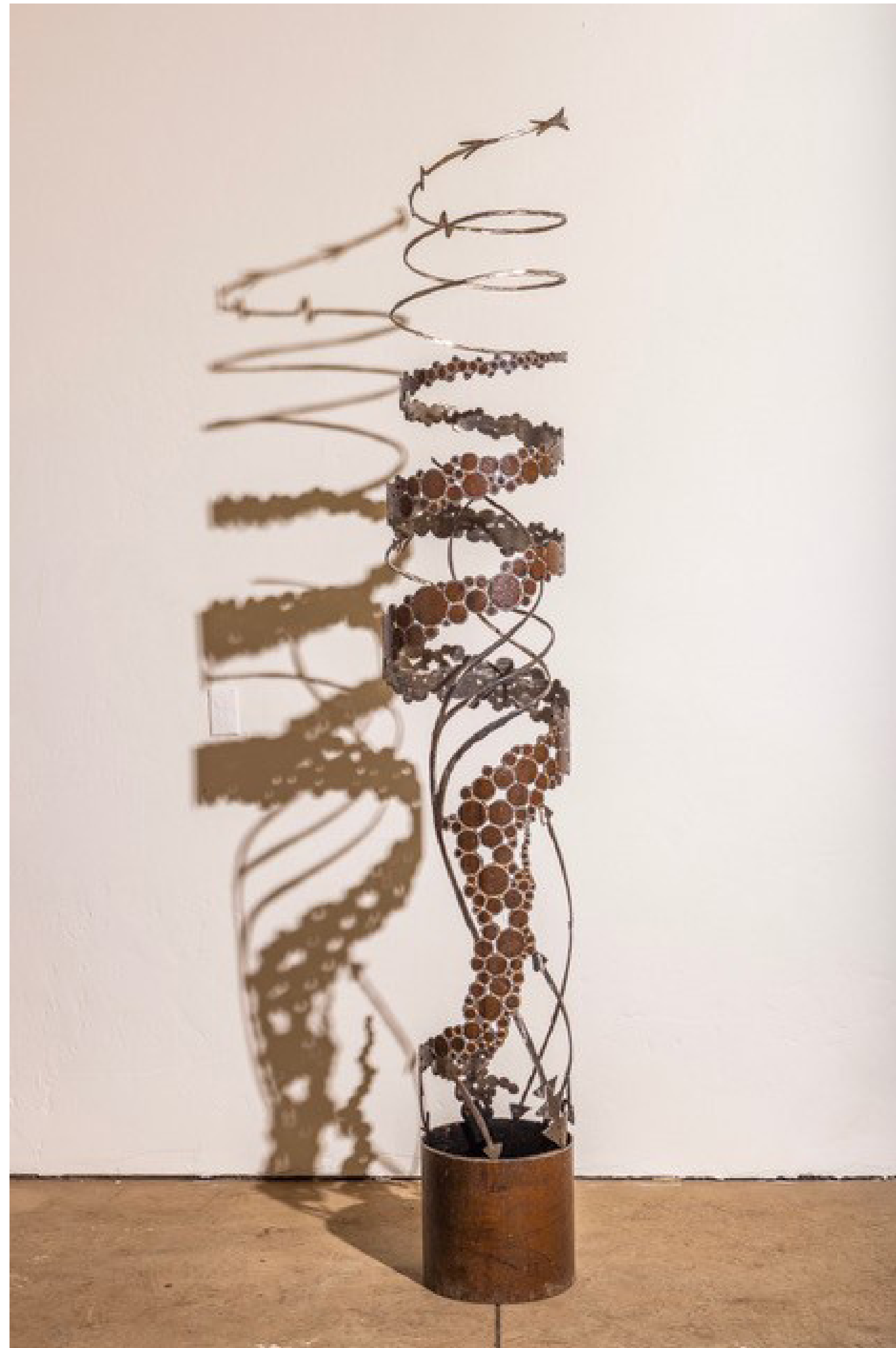


Dots and Lines

Medium: Steel Pipe

Dimensions: 96" x 18" x 18"

Installation method/ requirements: A simple anchor bolt in the cement to secure the base.



Spotted Spiral

Medium: Steel Pipe

Dimensions: 90" x 16" x 16"

**Installation method/
requirements:** A simple
anchor bolt in the cement to
secure the base.



Brush Stroke Spiral

Medium: Steel Pipe

Dimensions: 94"x 17"

**Installation method/
requirements:** A simple
anchor bolt in the cement to
secure the base.

