



City of Ketchum

### KETCHUM ARTS COMMISSION MEETING AGENDA MEMO

Meeting Date:  Staff Member/Dept:

Agenda Item:

**Recommended Motion:**

I approve the two artwork pieces selected by the majority of present Arts Commissioners to be installed for this year's Art on Fourth Exhibition.

**Reasons for Recommendation:**

Five qualified artists submitted 10 pieces of artwork for the Commission's Call for Artists for this year's Art on Fourth Exhibition.

All artists who submitted artwork for the Sun Valley and Spruce call to artists have agreed to have their artwork considered for the Art on 4<sup>th</sup> call as well.

All submissions appear to meet the installation requirements.

**Policy Analysis and Background (non-consent items only):**

**Sustainability Impact:**

None OR state impact here:

**Financial Impact:**

None OR Adequate funds exist in account:  Adequate funds exist in account

**Attachments:**

1. Art installation locations
2. Ascension: steel with rust patina

3. Mountain Horse: bronze
4. Modern Man: direct metal sculpture
5. Transparencies in Time: Cuahpohualli embedded in ethnopoetic language poetry
6. Epiphany: direct metal sculpture
7. Lively Spiral with Rust Spots: steel pipe
8. Floating Spiral with Rust Spots: steel pipe
9. Dots and Lines: steel pipe
10. Spotted Spiral: steel pipe
11. Brush Stroke Spiral: steel pipe

# Art installation locations

## 4<sup>th</sup> and Washington Avenue

Mid-block on 4<sup>th</sup> Street between Main and Washington Avenue (south of the asphalt Despo's Parking area)



# Forest Service Park

North end of Town Square in the center patch of grass.



# Ascension

**Medium:** Steel with rust patina

**Dimensions:** 132" high x 56" wide x 33" deep

**Installation method/requirements:** To be mounted to a minimum 4" thick x 24" x 48" concrete pad using (4) 3/8" concrete strike anchors.

**Note:** this is a new sculpture. The patina was applied to the top portion on 5-13-2024 and will naturally blend to the darker color of the bottom portion within a few weeks.



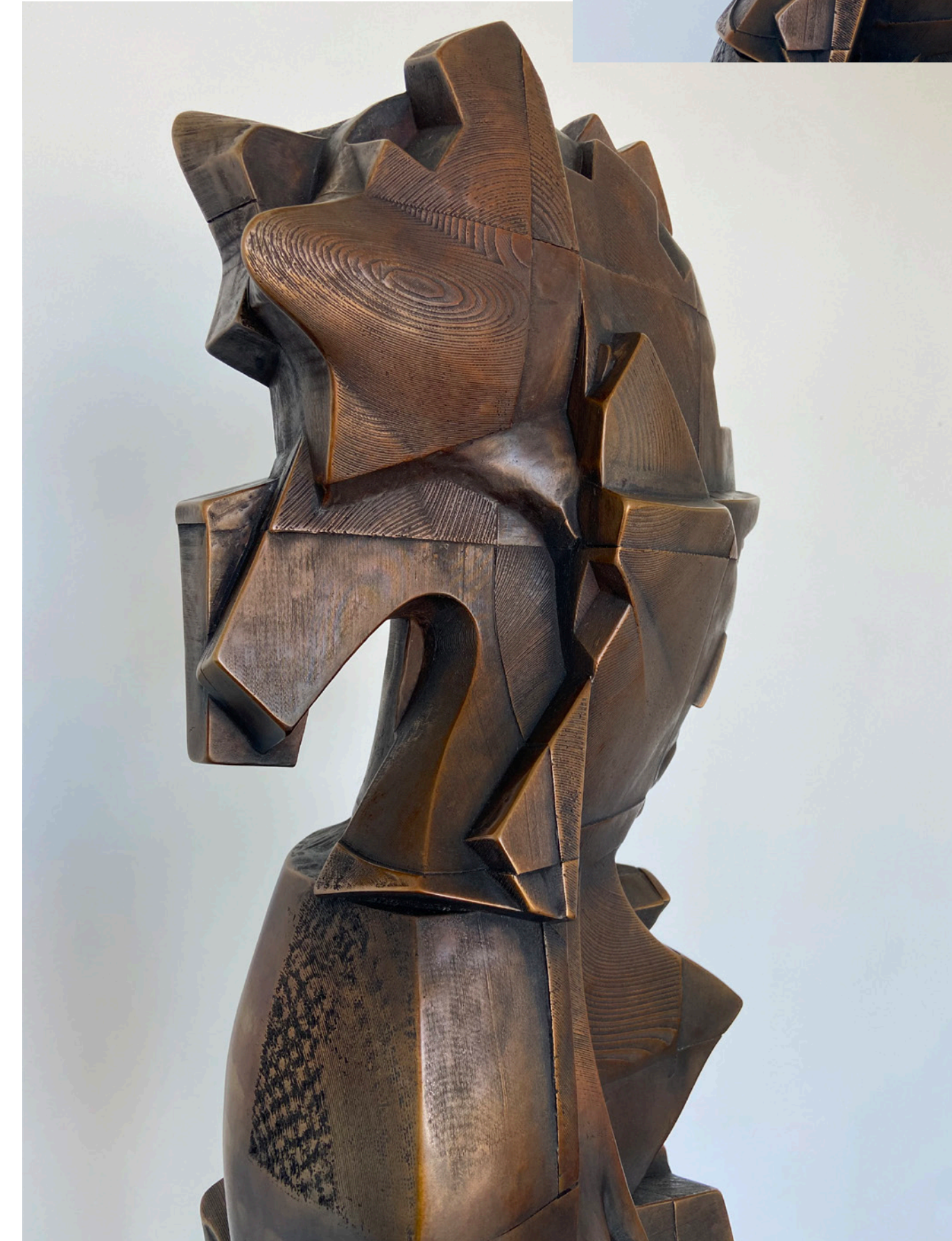
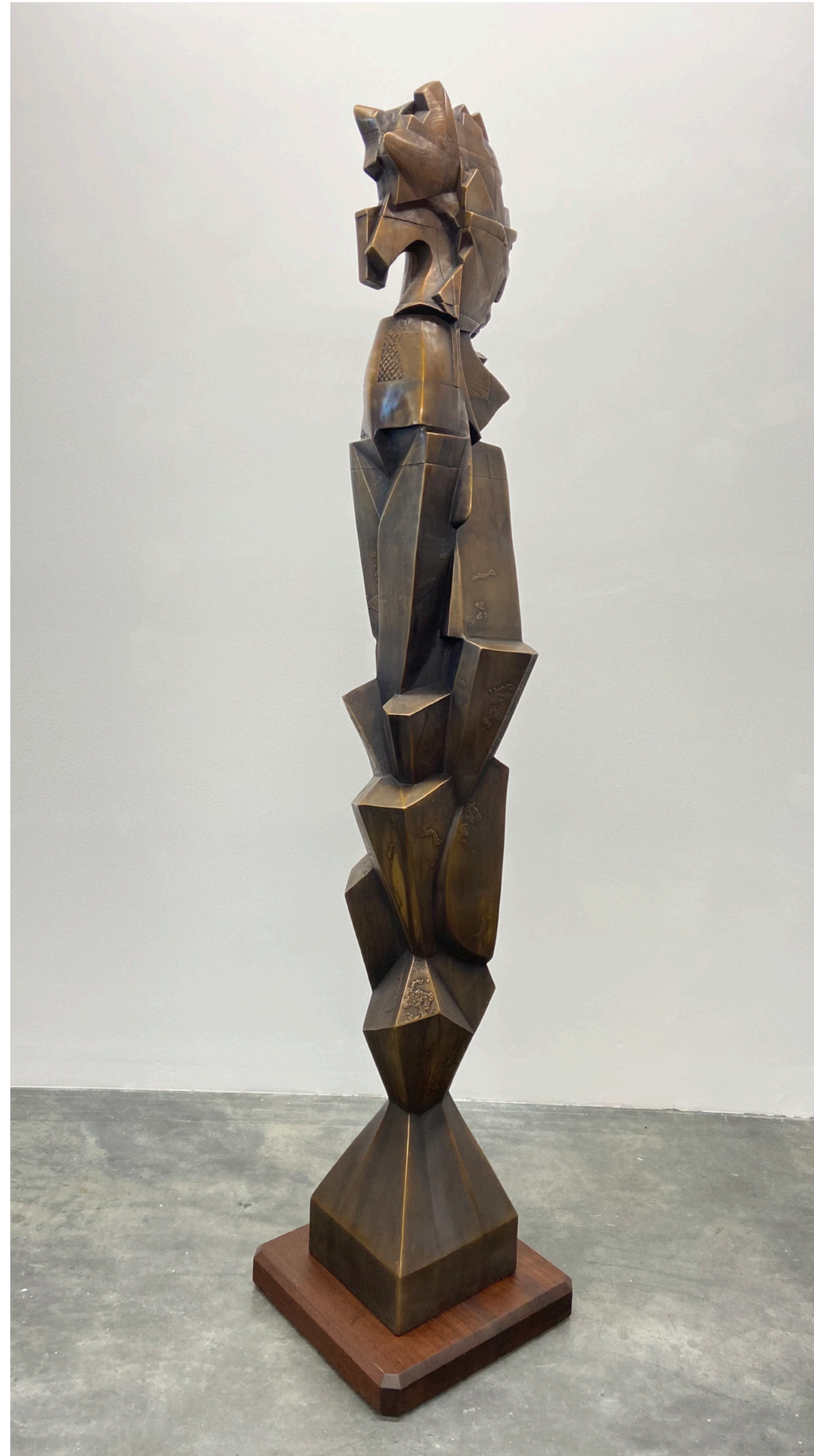
# Mountain Horse

**Medium:** Bronze

**Dimensions:** 74 x 16 x 16 inches

**Installation method/requirements:**

This sculpture has a steel base with bolt holes. It can be welded to a steel pedestal or bolted into concrete.



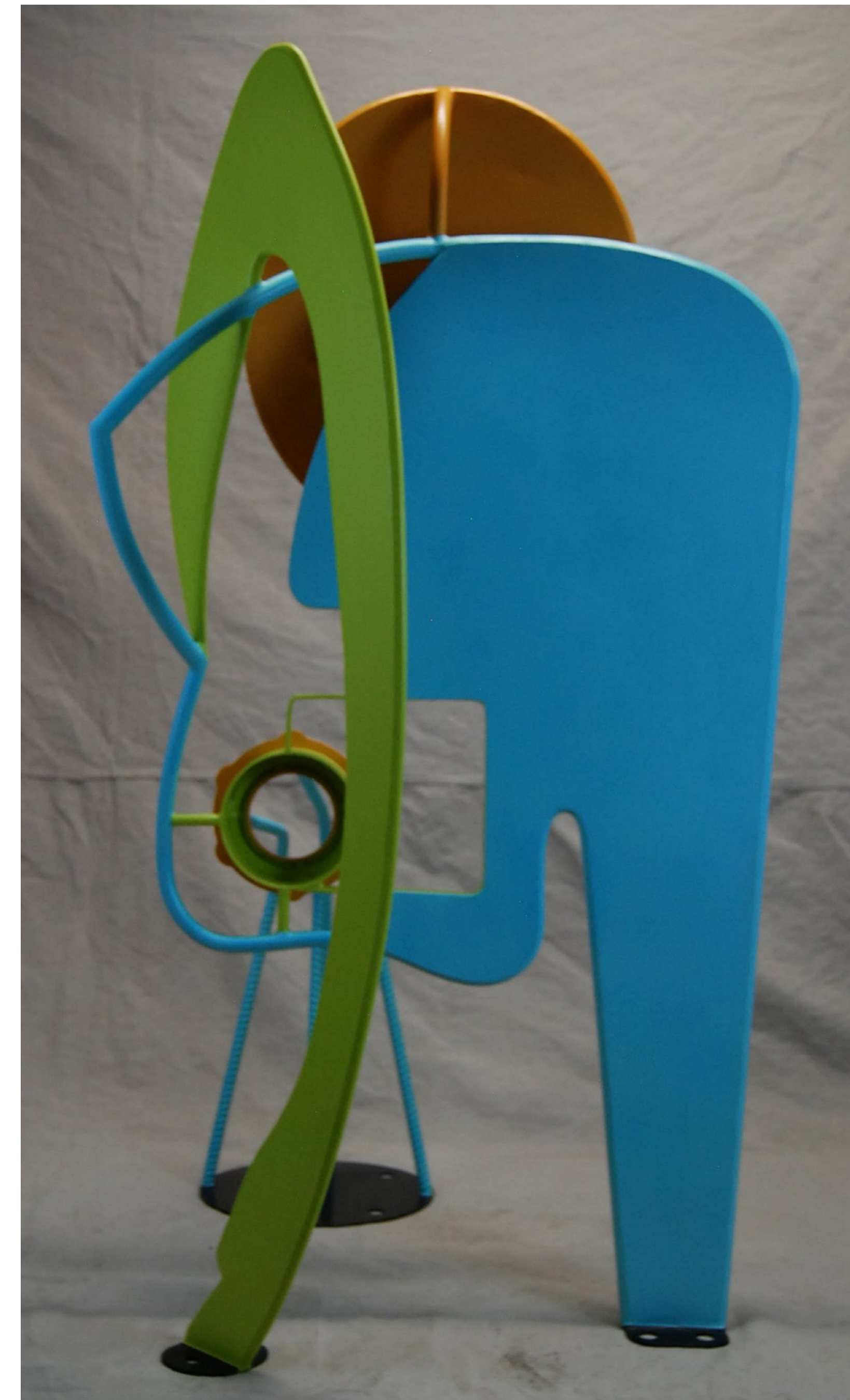
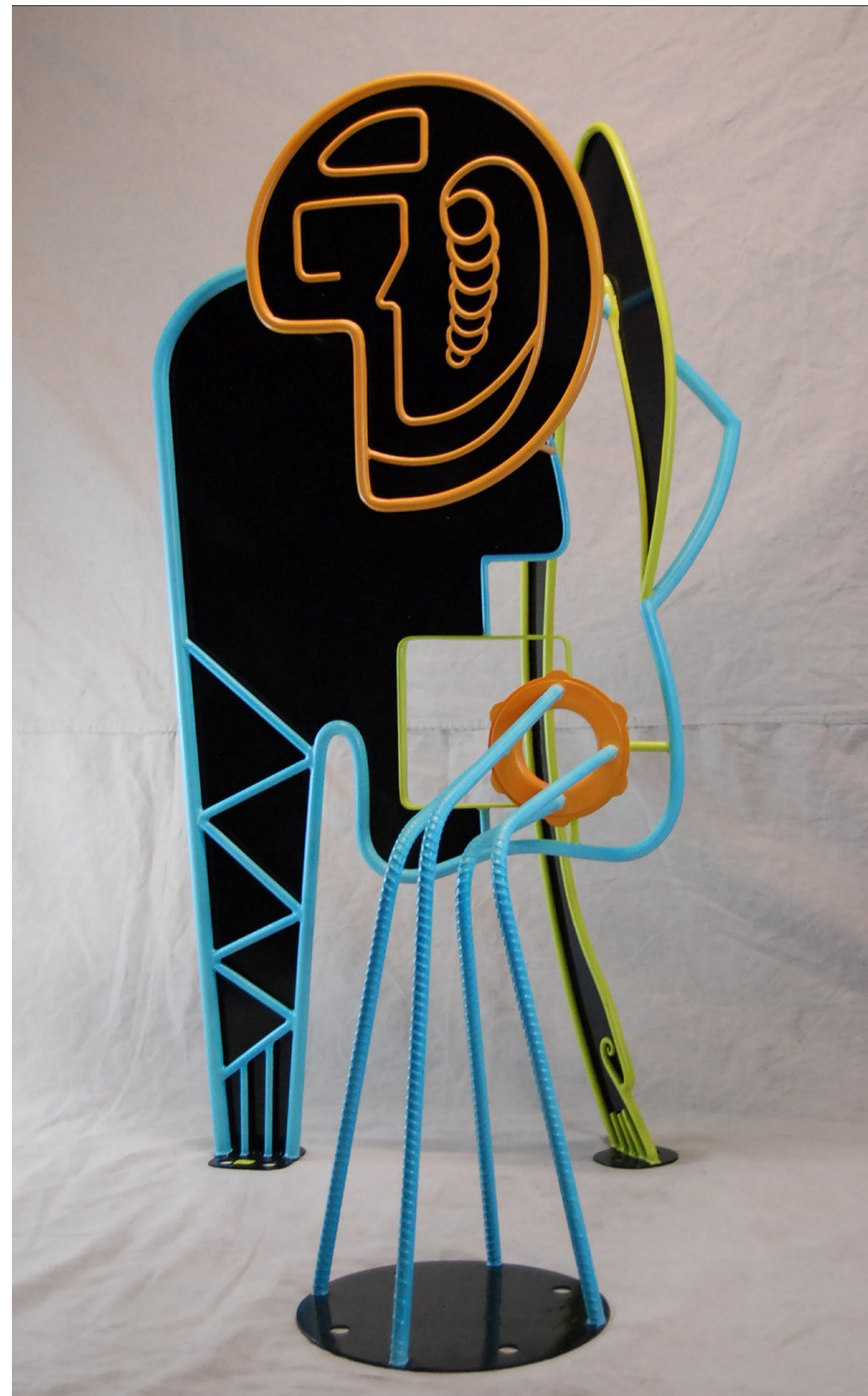
# Modern Man

**Medium:** Direct Metal Sculpture (made out of mild steel, finished with oil base paint)

**Dimensions:** 55" x 30" x 37"

**Installation method/requirements:**

Mount/install with (10) 1/2" concrete lags. Electricity on site. Approx weight 150lb.







# Epiphany

**Medium:** Direct Metal Sculpture (Picasso inspired horse: made out of mild steel and finished with oil base paint)

**Dimensions:** 105" x 36" x 89"

**Installation method/  
requirements:**

Electricity on site. (5)  
3/8 inch concrete lags.  
Weight approx. 250lbs.  
2-3 additional men to help with placement.

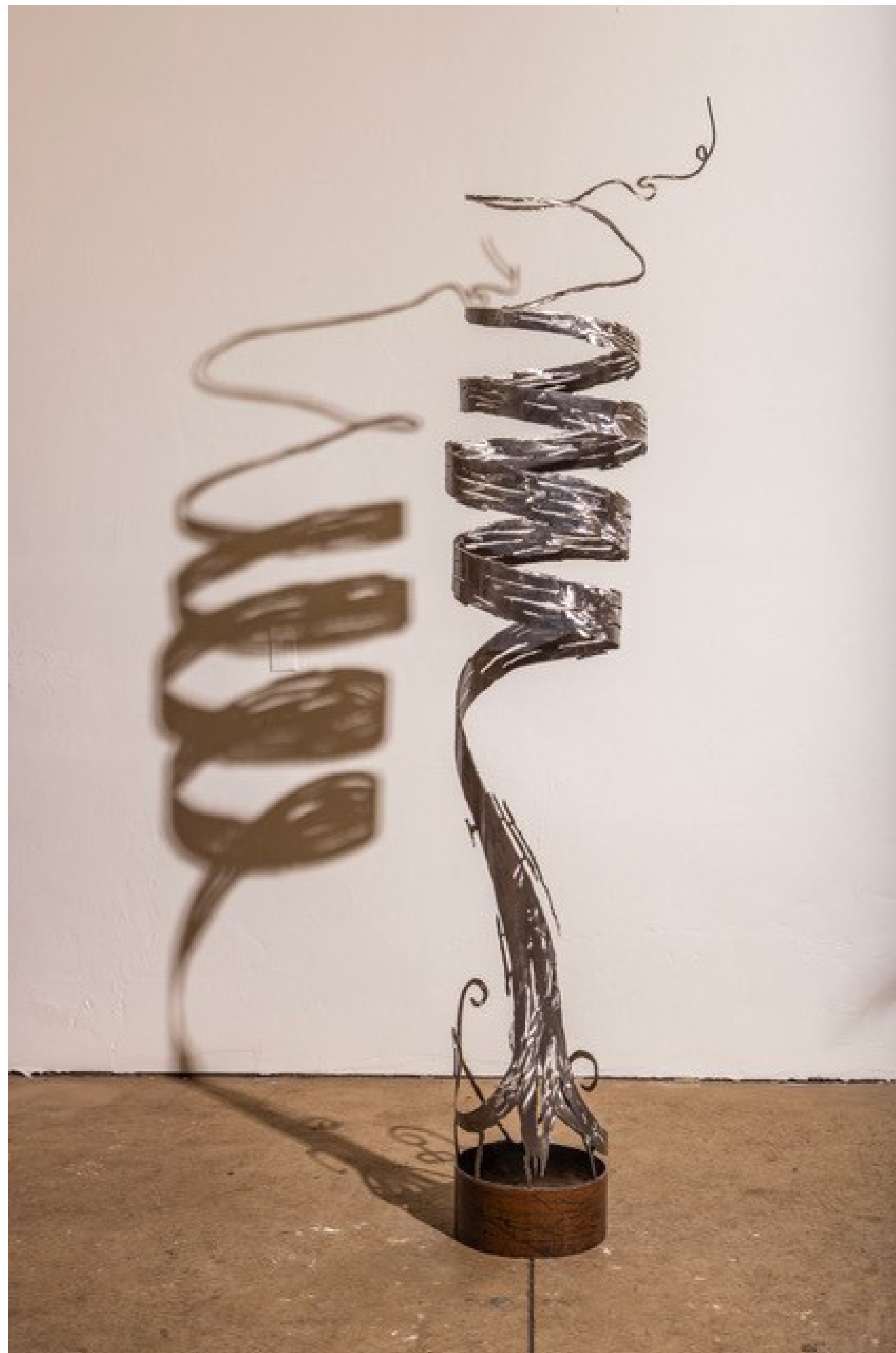


# Lively Spiral with Rust Spots

**Medium:** Steel Pipe

**Dimensions:** 102" x 24"  
x24'

**Installation method/  
requirements:** A  
simple anchor bolt in  
the cement to secure  
the base

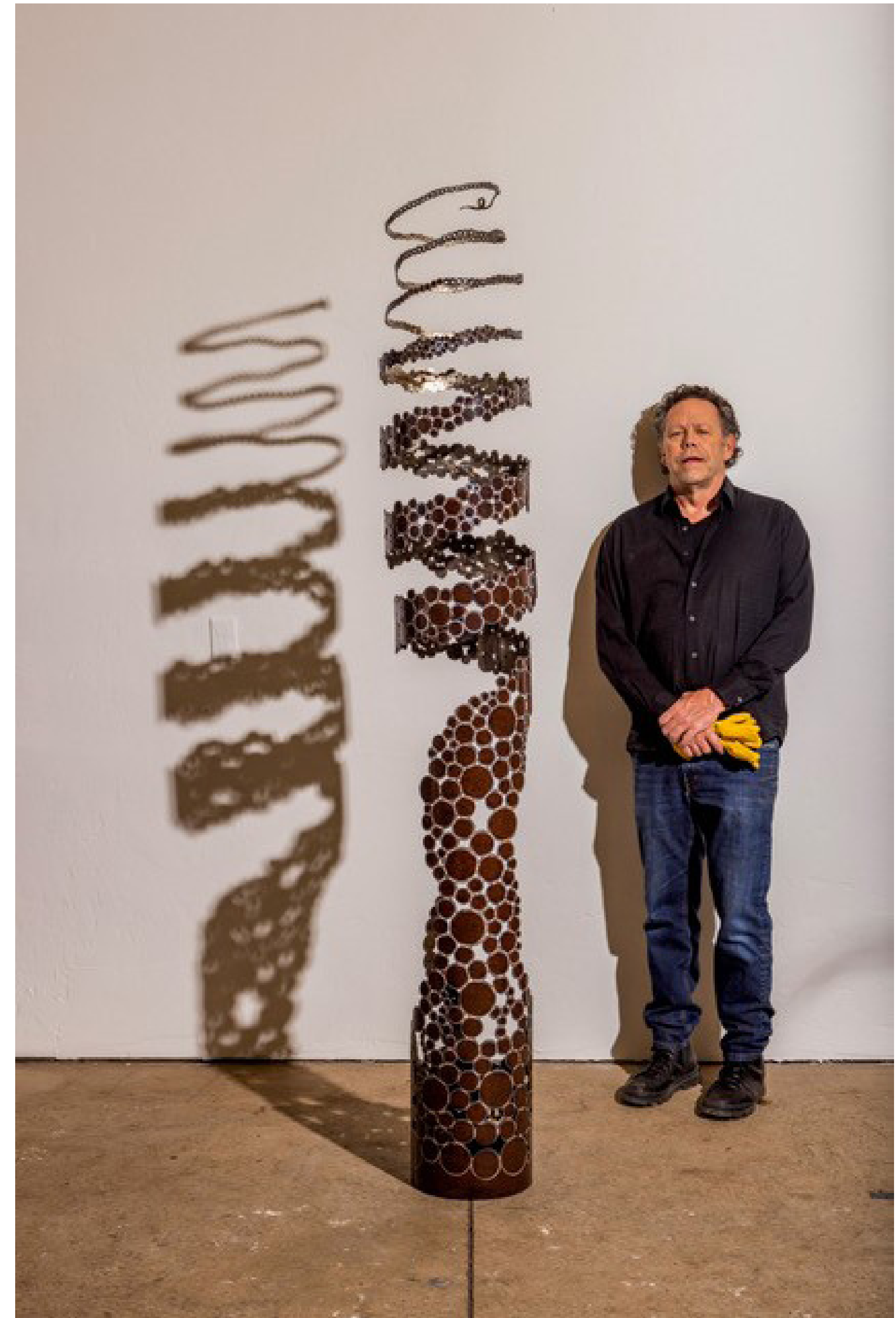


# Floating Spiral with Rust Spots

**Medium:** Steel Pipe

**Dimensions:** 101" x 22"  
x22"

**Installation method/  
requirements:** A  
simple anchor bolt in  
the cement to secure  
the base

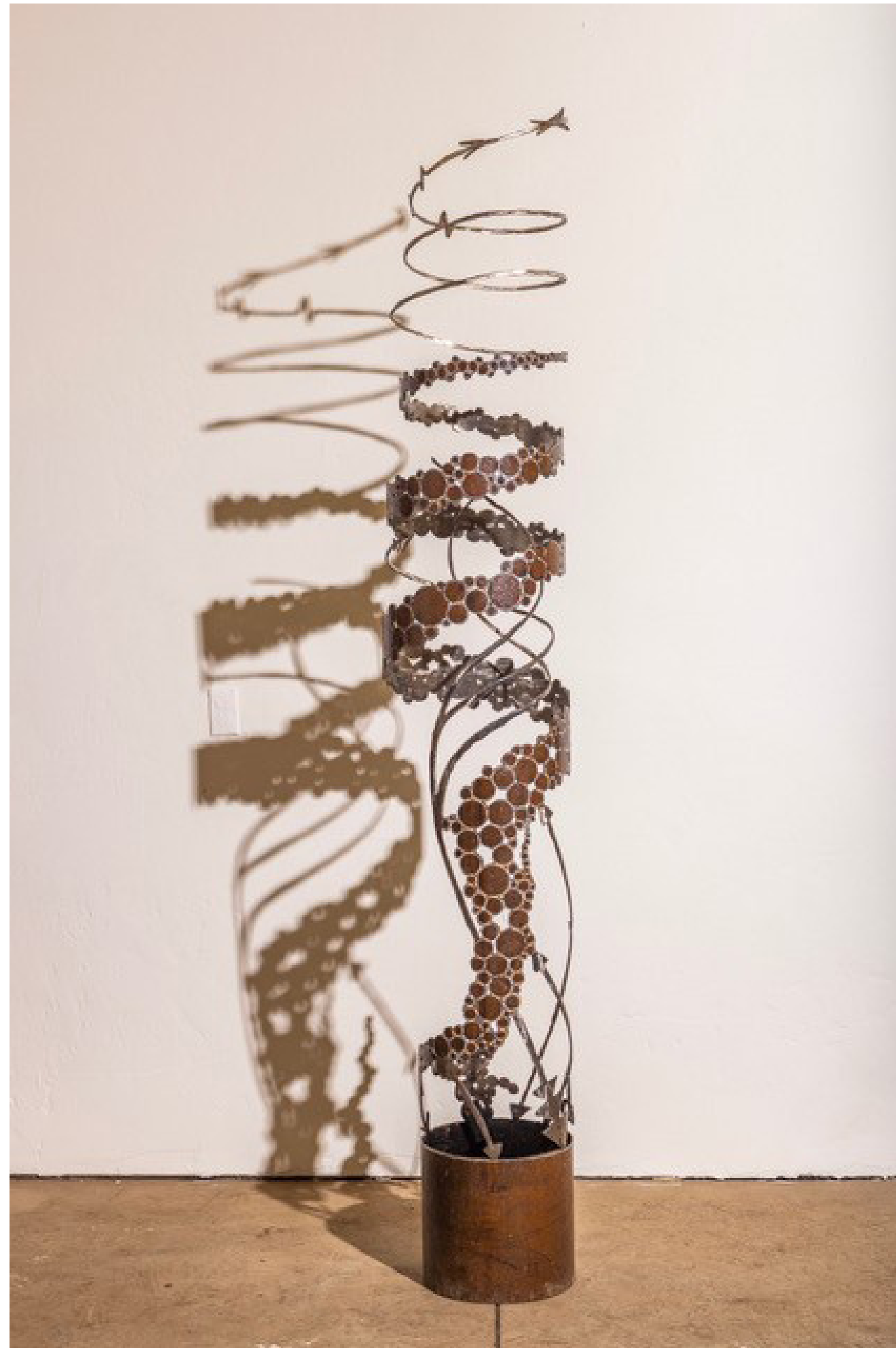


# Dots and Lines

**Medium:** Steel Pipe

**Dimensions:** 96" x 18" x 18"

**Installation method/ requirements:** A simple anchor bolt in the cement to secure the base.



# Spotted Spiral

**Medium:** Steel Pipe

**Dimensions:** 90" x 16" x 16"

**Installation method/  
requirements:** A simple  
anchor bolt in the cement to  
secure the base.



# Brush Stroke Spiral

**Medium:** Steel Pipe

**Dimensions:** 94"x 17"

**Installation method/  
requirements:** A simple  
anchor bolt in the cement to  
secure the base.

