



Ketchum Neighborhoods Historic Resource Survey

Public Engagement Meeting
Tuesday, August 5, 2025

loggia preservation



The activity that is the subject of this project has been financed in part with federal funds from the National Park Service, Department of the Interior. However, the contents and opinions do not necessarily reflect the views or policies of the Department of the Interior, nor does the mention of trade names or commercial products constitute endorsement or recommendation by the Department of the Interior

Agenda

- Project Team
- What is a Historic Resource Survey?
- Why Conduct a Historic Survey?
- What to Expect
- Project Timeline
- Survey Areas
- Questions & Comments



Project Team



Cassandra Talley



Katie Cook

loggia preservation

Allison Kennedy
City of Ketchum Senior Planner



Idaho State Historic Preservation Office



What is a Historic Resource Survey?

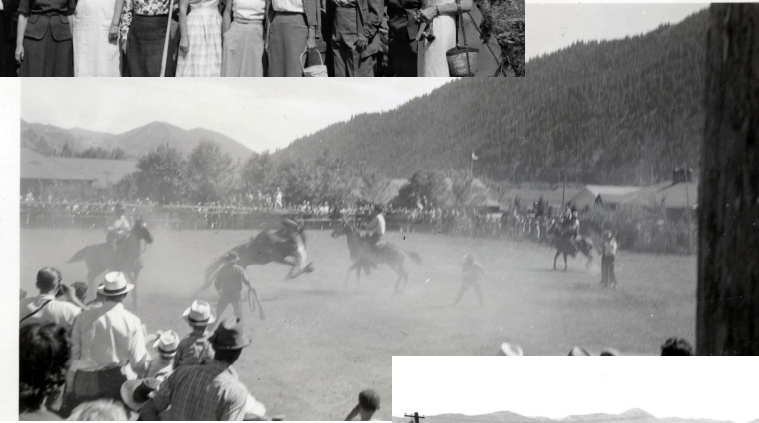
- Gathering information on historic resources to identify those with historical, architectural, archaeological, or cultural significance
 - Research (books, articles, maps, historic photographs, oral histories, etc.)
 - Fieldwork photography to document resources
- Levels of surveying: Reconnaissance vs. Intensive
- Survey products:
 - Inventory Forms
 - Survey Report
 - Research Materials



Why Conduct a Historic Survey?

Surveys provide the foundation for nearly all preservation activities

- Document existing historic resources and important histories
- Provide historic contexts to evaluate the significance of resources
- Provide recommendations for further preservation work like:
 - More intensive survey efforts
 - National Register of Historic Places designation
 - Local historic district designation
 - Oral history recordings, etc.



What to Expect

- Taking photographs of resources.
Photographs are only taken from the public right-of-way.
- Note taking
- Driving slowly through neighborhoods or walking
- ***If you see us, come say hello!***



Project Timeline

Preliminary Research
& Data Collection
July 2025

First Draft of Survey
Materials
September 2025

August 2025
Survey Fieldwork &
Local Research

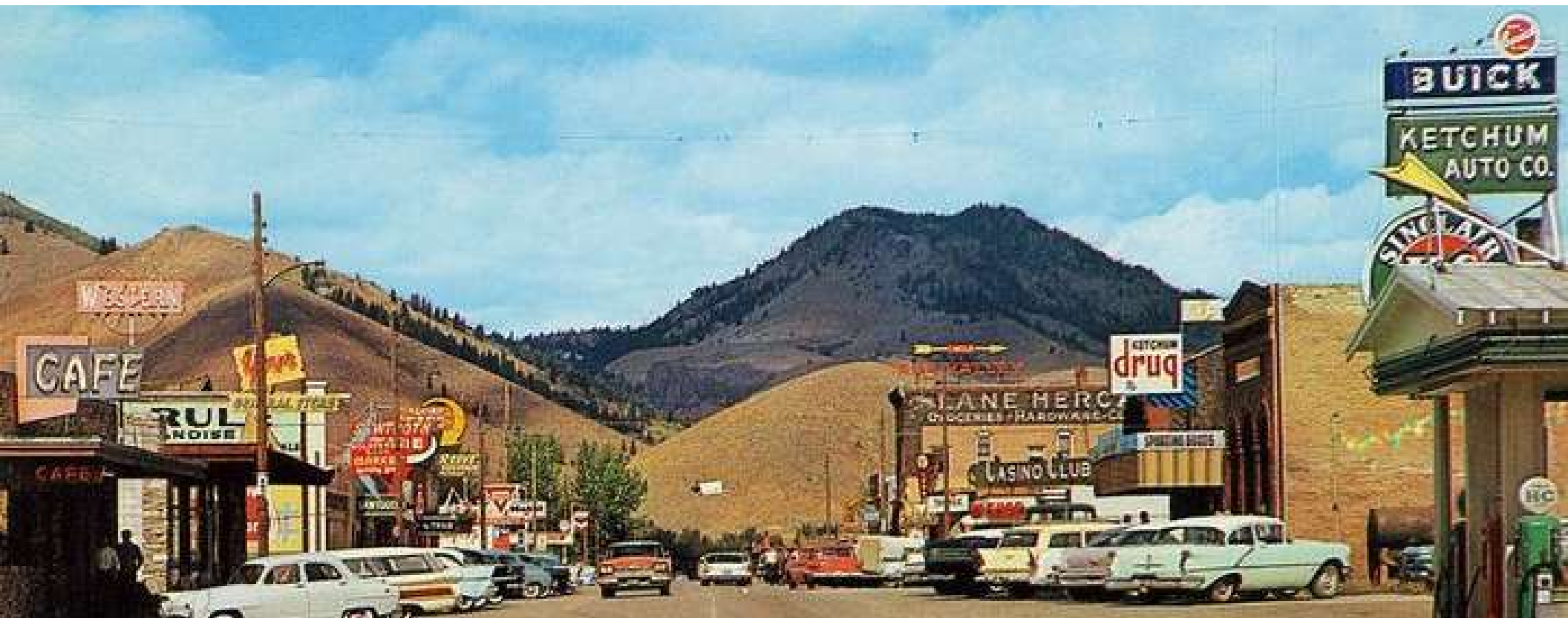
December 2025
Final Survey Materials &
Project Completed



Survey Areas

- **Downtown, Trail Creek, and Knob Hill neighborhoods**
- Focus is on resources constructed between 1950 and 1980
- Survey area contains residential, multi-family, mixed-use, and commercial resources
- 115 resources



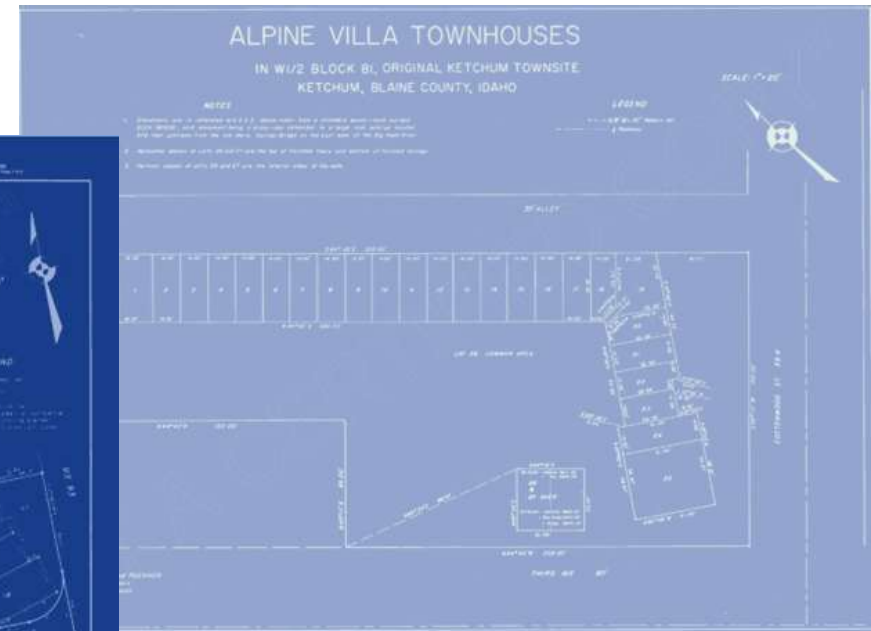
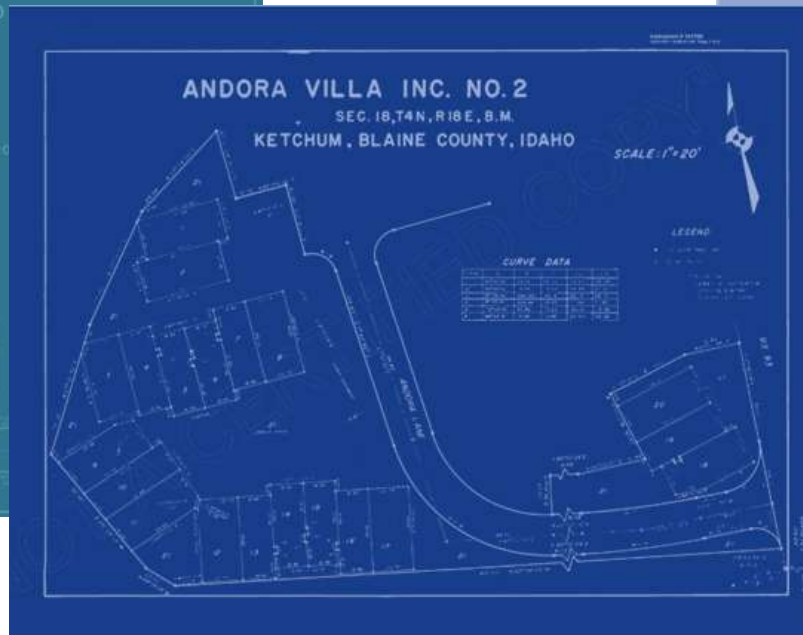
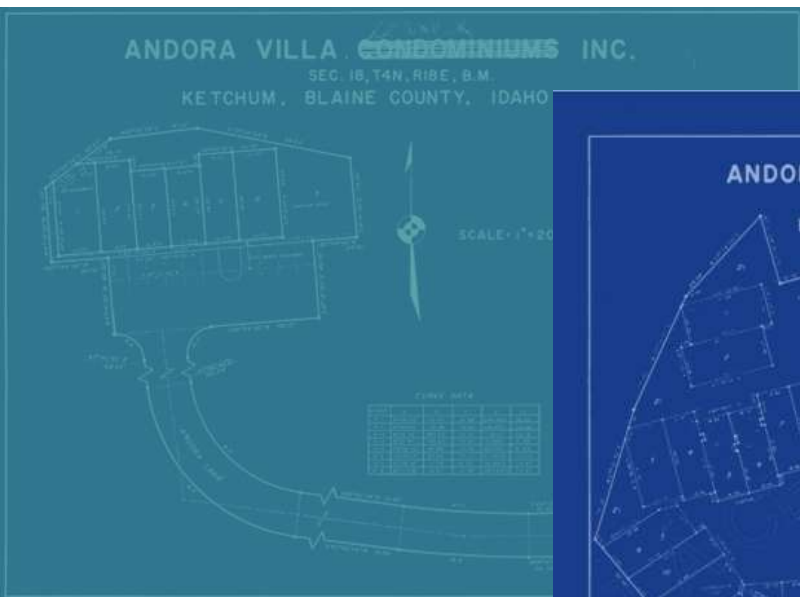


Downtown Ketchum

- Primarily commercial resources with some residential
- 70 resources

Trail Creek

- Largely residential condos and townhouses
- 35 resources



Knob Hill

- Largely residential resources
- 10 resources



Questions? Comments?

We want to hear from *you!*

Contact form for Ketchum residents:

www.loggiapreservation.com/hello-loggia

Cassandra Talley

(810) 333-2572

cassandra@loggiapreservation.com

Katie Cook

(586) 441-8168

katie@loggiapreservation.com