



City of Ketchum

CITY COUNCIL MEETING AGENDA MEMO

Meeting Date: Staff Member/Dept:

Agenda Item:

Recommended Motion:

I move to approve staff recommended parking adjustments along 10th Street

Reasons for Recommendation:

- Parking should be available for all businesses owners, employees, and customers along 10th Street
- Traffic flow and key bus routes on 10th Street are oftentimes blocked by delivery trucks
- Pedestrian safety will be improved with unobstructed traffic flow

Policy Analysis and Background (non-consent items only):

Staff is addressing the parking and enforcement issues on 10th Street to ensure equitable access to parking for all businesses and their employees while maintaining the street’s functionality as a key traffic corridor.

Over the years, parking on 10th Street has been monopolized, forcing businesses to use customer-designated areas and creating congestion that hinders traffic flow, including buses.

Delivery trucks exacerbate the problem by parking on the street due to the congestion in this area, blocking visibility and causing safety concerns. Additionally, the improper use of public rights of way impacts the overall accessibility and use of the area.

Staff proposes the implementation of solutions that balance the needs of all businesses and improves safety and traffic flow. Measures include:

- Designating specific areas for deliveries
 - Trucks will be allowed to make deliveries in a designated area of the public right of way on Leadville Ave. Parking will not be permitted in this area at any time.
- Preventing parking in problematic locations
 - Overnight parking will not be permitted on the west end of 10th Street to prioritize employees’ access to parking and keep parking lots available for customers.

- Ensuring clear sightlines at intersection
 - While the city will continue to allow the use of the public right of way on the south side of 10th Street between the alley and Leadville Avenue, parking at the corner of the alley will be prohibited to allow visibility for vehicles exiting the alley.

Introducing these changes will restore fairness and functionality and improve vehicular movement on this key bus route.

Sustainability Impact:

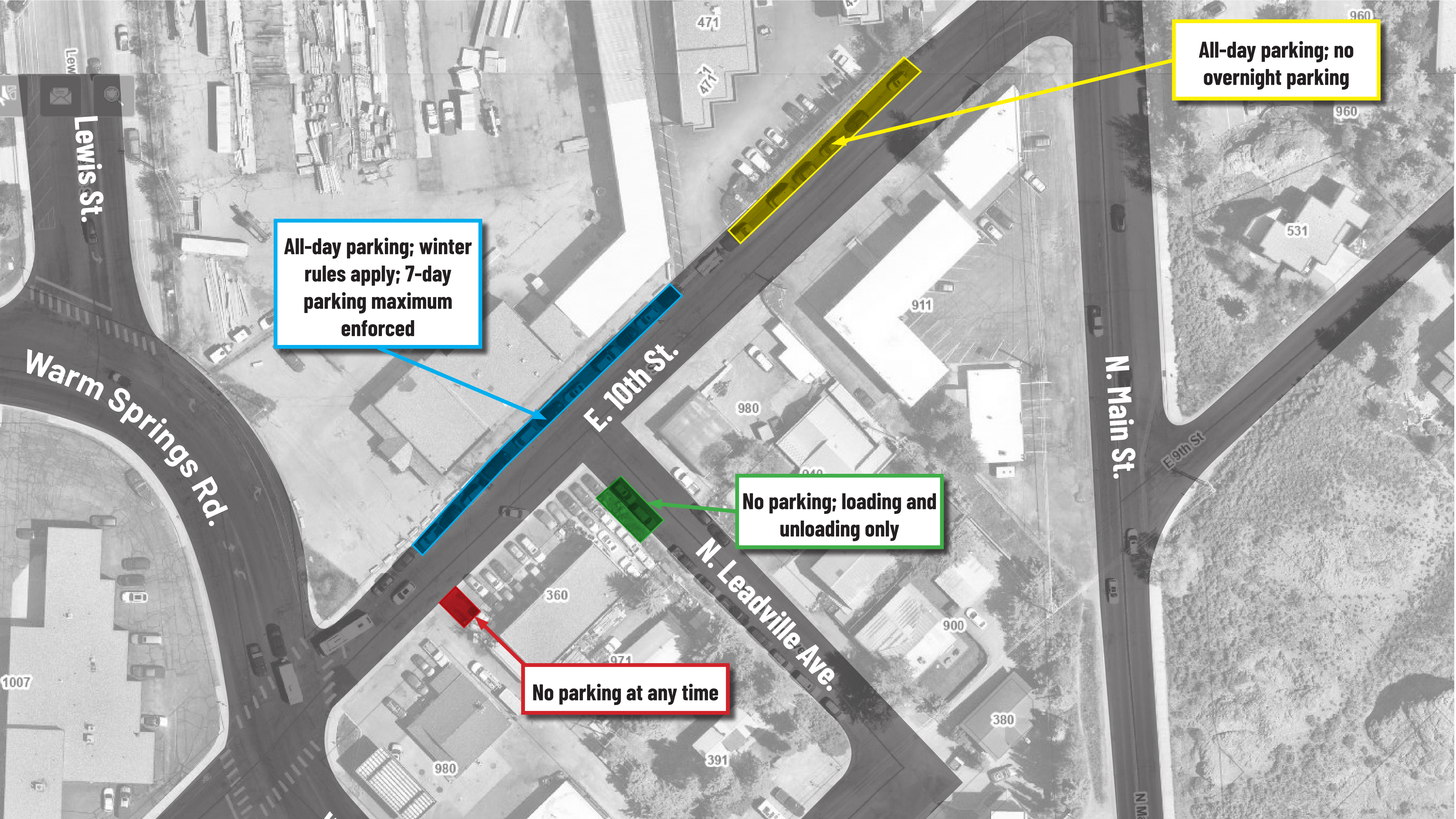
None OR state impact here: None

Financial Impact:

None OR Adequate funds exist in account:	None
--	------

Attachments:

1. Map



All-day parking; no overnight parking

All-day parking; winter rules apply; 7-day parking maximum enforced

No parking; loading and unloading only

No parking at any time

Lewis St.

Warm Springs Rd.

E. 10th St.

N. Leadville Ave.

N. Main St.

1007

980

391

360

971

980

910

911

900

380

531

960

960

E 9th St

N. Main St.