



City of Ketchum

KETCHUM ARTS COMMISSION MEETING AGENDA MEMO

Meeting Date: Staff Member/Dept:

Agenda Item:

Recommended Motion:

I approve the two artwork pieces selected by the majority of present Arts Commissioners to be installed for this year's Art on Fourth Exhibition.

Reasons for Recommendation:

Four qualified artists/works of art have been submitted for the Commission's recent Call for Artists for this year's Art on Fourth Exhibition.

New artwork is installed each June and comes down in November for the annual exhibit; most of the submissions could be installed during the usual timeframe.

All submissions appear to meet the installation requirements.

Policy Analysis and Background (non-consent items only):

Sustainability Impact:

None OR state impact here:

Financial Impact:

None OR Adequate funds exist in account: Adequate funds exist in account

Attachments:

- 1. Ascension: steel with rust patina
- 2. Mountain Horse: bronze

3. Modern Man: direct metal sculpture

4. Transparencies in Time: Cuahpohualli embedded in ethno poetic language poetry

Ascension

Medium: Steel with rust patina

Dimensions: 132" high x 56" wide x 33" deep

Installation method/requirements: To be mounted to a minimum 4" thick x 24" x 48" concrete pad using (4) 3/8" concrete strike anchors.

Note: this is a new sculpture. The patina was applied to the top portion on 5-13-2024 and will naturally blend to the darker color of the bottom portion within a few weeks.



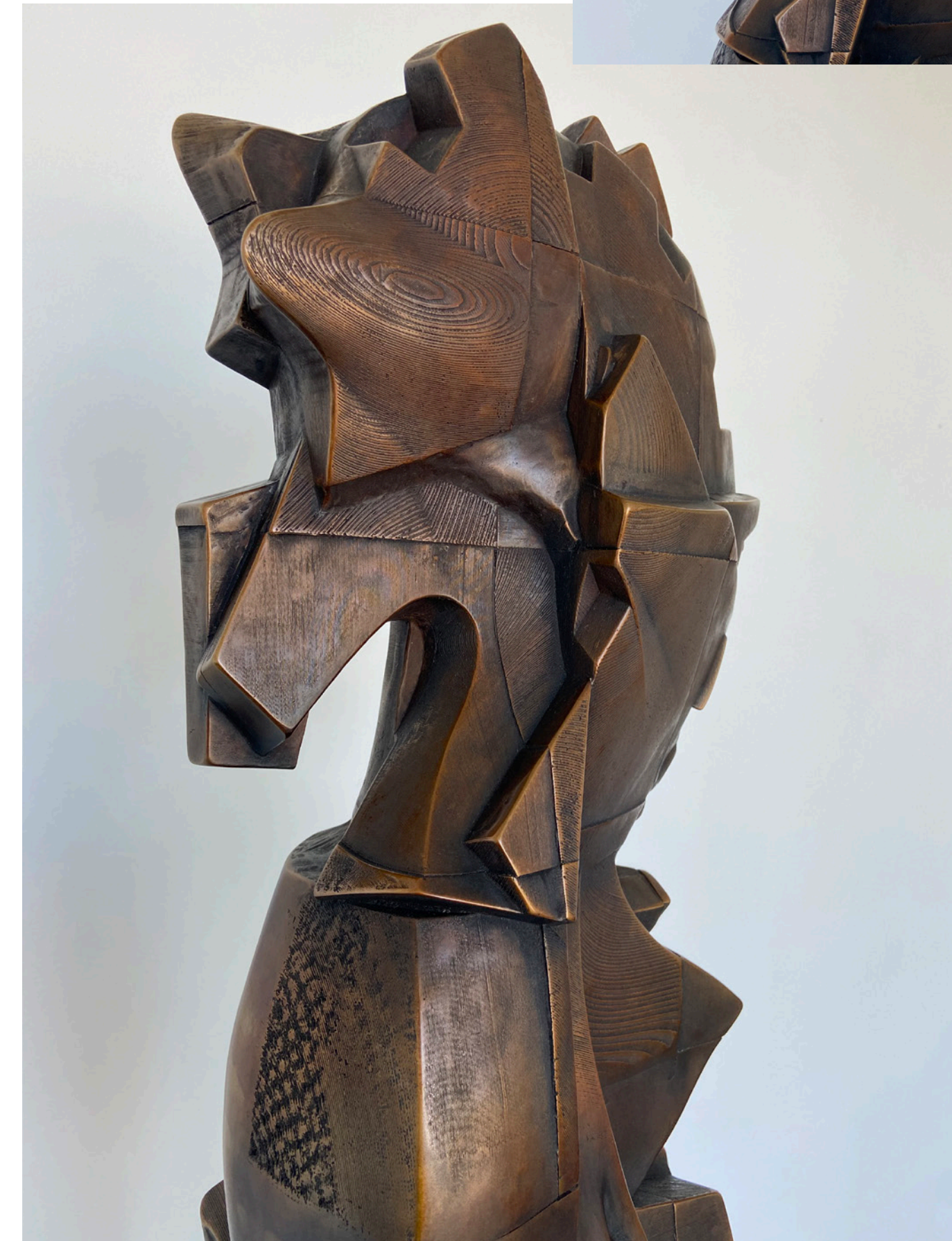
Mountain Horse

Medium: Bronze

Dimensions: 74 x 16 x 16 inches

Installation method/requirements:

This sculpture has a steel base with bolt holes. It can be welded to a steel pedestal or bolted into concrete.



Modern Man

Medium: Direct Metal Sculpture (made out of mild steel, finished with oil base paint)

Dimensions: 55" x 30" x 37"

Installation method/requirements:

Mount/install with (10) 1/2" concrete lags. Electricity on site. Approx weight 150lb.

