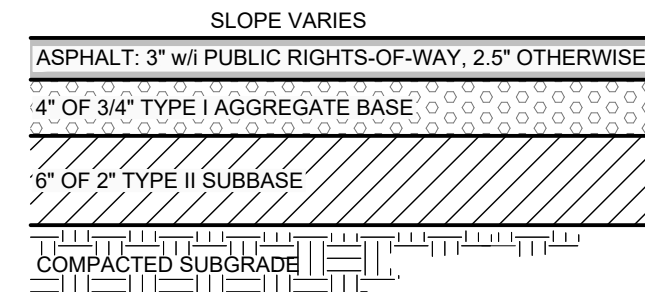
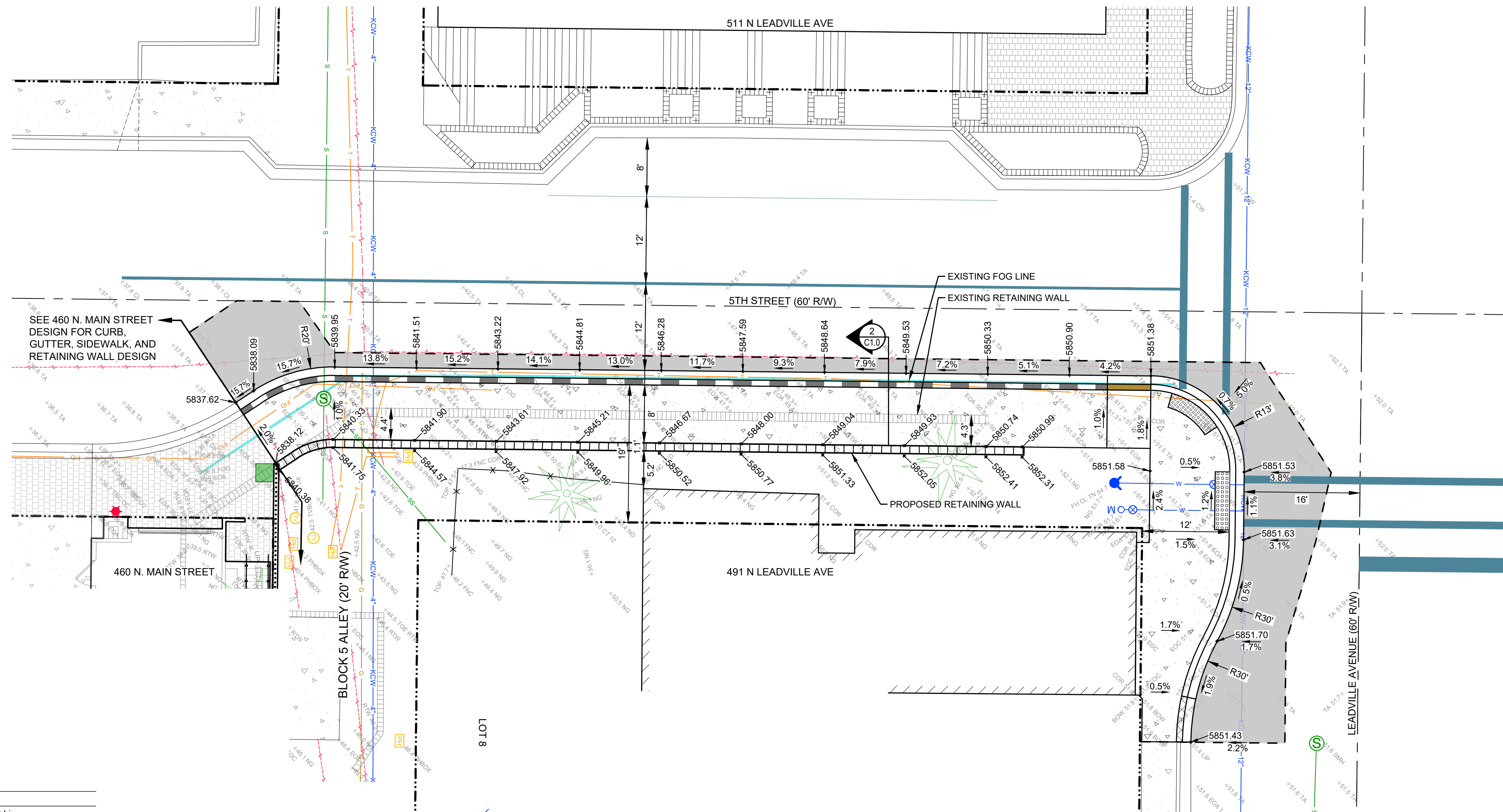


REUSE OF DRAWINGS: These drawings, or any portion thereof, shall not be used on any project or extension of this project except by agreement in writing with Galena Engineering, Inc.

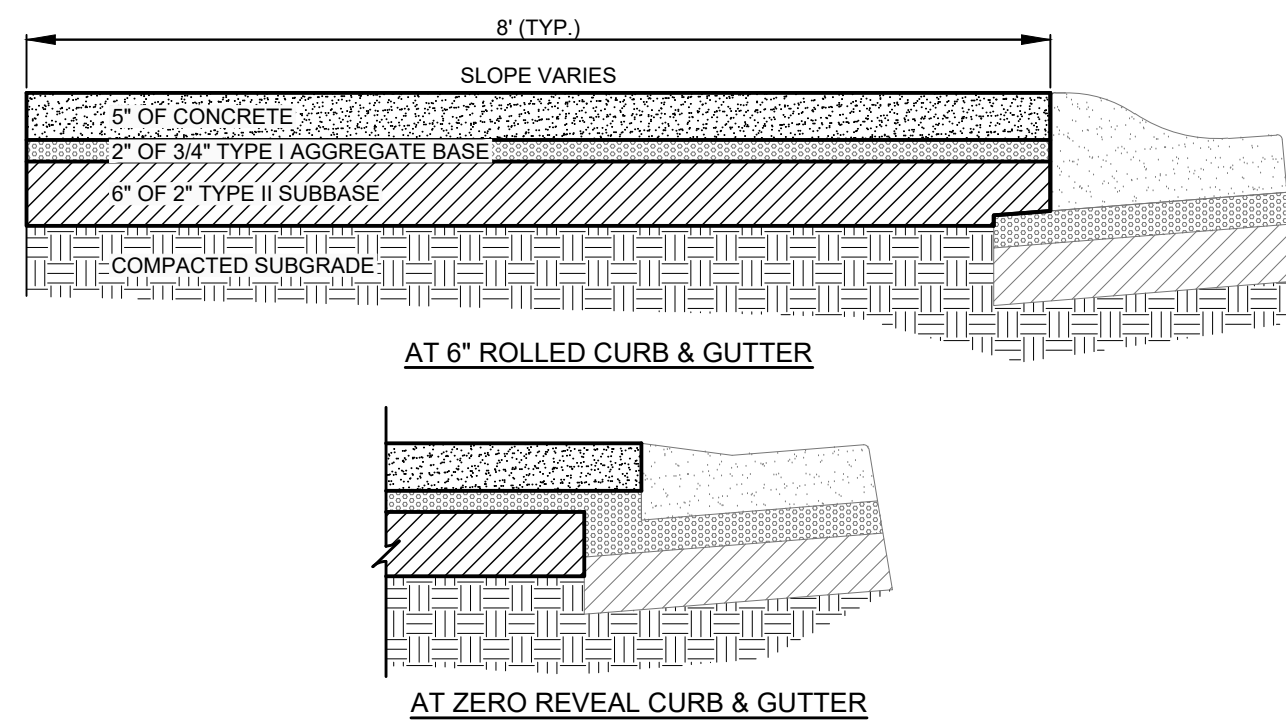


- NOTES:**
- SUBBASE CAN BE 2" TYPE II OR 3/4" TYPE I CRUSHED AGGREGATE BASE COURSE.
 - MATERIALS SHALL CONFORM WITH CURRENT ISPC STANDARDS, DIVISION 800 AGGREGATES AND ASPHALT.
 - PAVEMENT SECTION MAY BE MODIFIED IF A PROJECT SPECIFIC GEOTECHNICAL REPORT, STAMPED BY A LICENSED ENGINEER, IS PROVIDED.

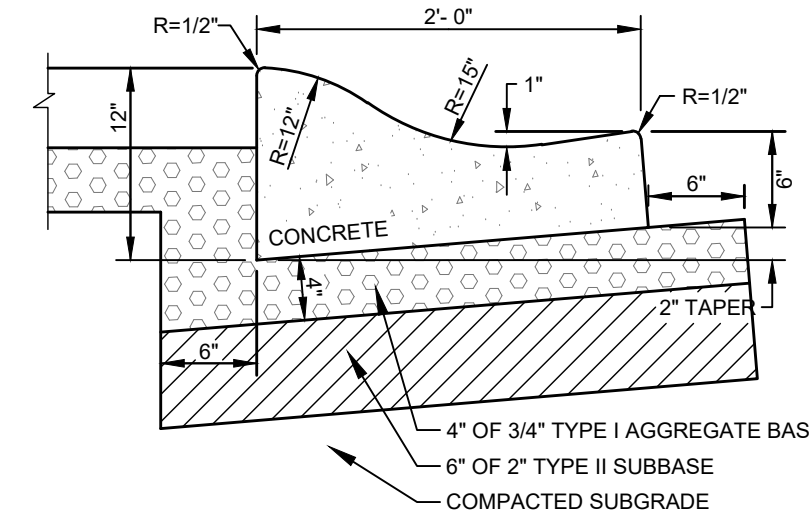
1
C1.0 **TYPICAL STREET ASPHALT SECTION**
N.T.S.



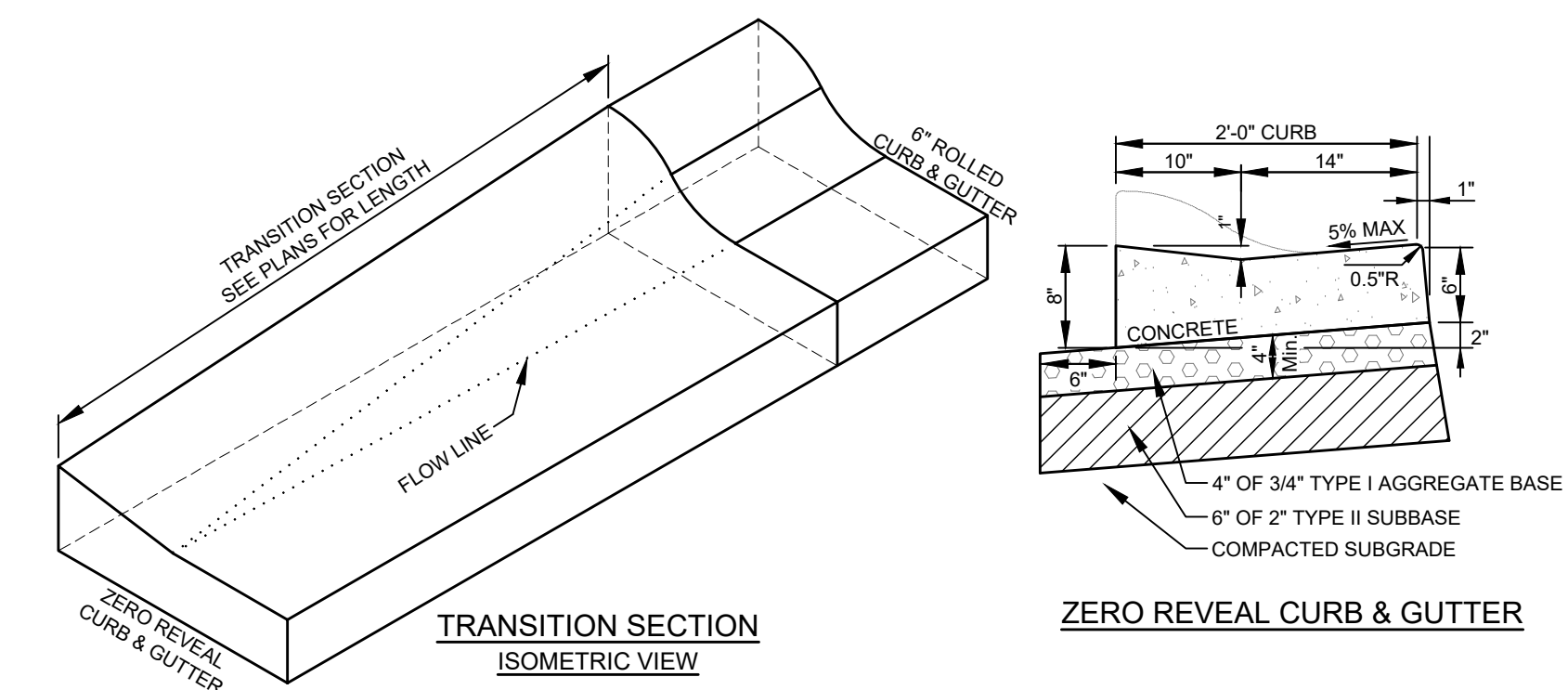
LEGEND	
EXISTING ITEMS	PROPOSED ITEMS
Right-of-way	Sawcut Line
Centerline	Road Paint
5' Contour Interval	5' Contour Interval
1' Contour Interval	1' Contour Interval
Curb & Gutter	6" Rolled Curb & Gutter
FNC = Fence Line	Zero Reveal Curb & Gutter
Building	Curb Transition (6" Rolled to Zero Reveal)
RTW = Retaining Wall	Curb Transition (6" Vertical to Zero Reveal)
Fog Line (Road Paint)	Truncated Dome
Concrete Sidewalk	Asphalt Repair
CT = Conifer Tree	Concrete Sidewalk
FOB = Fiber Optic Line	RTW = Retaining Wall
GM = Gas Main	Grade
GMTR = Gas Meter	Spot Elevation
TVB = Cable TV Buried	
TVBOX = Cable TV Riser	
PHB = Buried Telephone Line	
PHBOX = Telephone Riser	
BP, PB = Buried Power Line	
S = Sewer Main	
SS = Sewer Service	
SMH = Sewer Manhole	
KCW-12" = Ketchum City Water Line (12")	
KCW-4" = Ketchum City Water Line (4")	
WS = Water Service	
WMT = Water Meter	
FH = Fire Hydrant	
WV = Water Valve	
BOW = Back of Walk	
CC = Curb Cut	
CL = Centerline	
COR = Corner	
EOA = Edge of Asphalt	
EOC = Edge of Concrete	
FF = Finished Floor	
GB = Grade Break	
IC = Illegible Cap	
LIP = Lip of Gutter	
NC = No Cap	
NG = Natural Ground	
TA = Top of Asphalt	
TBC = Top Back of Curb	
TOE = Toe of Slope	
TOP = Top of Slope	



2
C1.0 **TYPICAL CONCRETE SIDEWALK SECTION**
N.T.S.



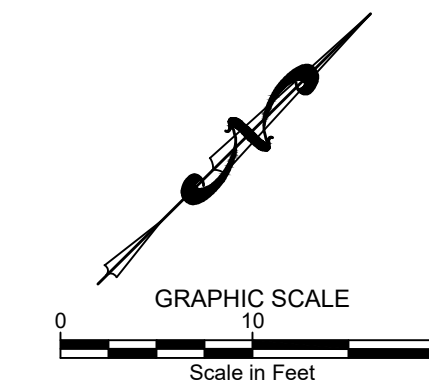
3
C1.0 **6" CONCRETE ROLLED CURB & GUTTER**
N.T.S.



4
C1.0 **TYPICAL CURB TRANSITION DETAIL**
N.T.S.

- NOTES:**
- SUBBASE CAN BE 2" TYPE II OR 3/4" TYPE I CRUSHED AGGREGATE BASE COURSE.
 - MATERIALS SHALL CONFORM WITH CURRENT ISPC STANDARDS, DIVISION 800 AGGREGATES AND ASPHALT.
 - PAVEMENT SECTION MAY BE MODIFIED IF A PROJECT SPECIFIC GEOTECHNICAL REPORT, STAMPED BY A LICENSED ENGINEER, IS PROVIDED.
 - 1/2-INCH PREFORMED EXPANSION JOINT MATERIAL (AASHTO M 213) AT TERMINAL POINTS OF RADII.
 - CONTINUOUS PLACEMENT PREFERRED, SCORE INTERVALS 10-FEET MAXIMUM SPACING (8-FEET W/SIDEWALK).

- NOTES:**
- SUBBASE CAN BE 2" TYPE II OR 3/4" TYPE I CRUSHED AGGREGATE BASE COURSE.
 - MATERIALS SHALL CONFORM WITH CURRENT ISPC STANDARDS, DIVISION 800 AGGREGATES AND ASPHALT.
 - PAVEMENT SECTION MAY BE MODIFIED IF A PROJECT SPECIFIC GEOTECHNICAL REPORT, STAMPED BY A LICENSED ENGINEER, IS PROVIDED.
 - 1/2-INCH PREFORMED EXPANSION JOINT MATERIAL (AASHTO M 213) AT TERMINAL POINTS OF RADII.
 - CONTINUOUS PLACEMENT PREFERRED, SCORE INTERVALS 10-FEET MAXIMUM SPACING (8-FEET W/SIDEWALK).



**PRELIMINARY
NOT FOR
CONSTRUCTION**

DESIGNED BY
DRAWN BY
SMF
CHECKED BY

GALENA
ENGINEERING, INC.
Civil Engineers & Land Surveyors
317 N. River Street
Hailey, Idaho 83433
(208) 768-1705
email: galena@galena-engineering.com

PURPOSE: ISSUE FOR PRELIMINARY REVIEW	
NO.	DATE BY REVISIONS

C1.0

**KETCHUM SIDEWALK IMPROVEMENT PLAN
FIFTH ST (BLOCK 5 ALLEY TO LEADVILLE AVE.)**
LOCATED WITHIN SEC 13, T4N, R17E & SEC 18, T4N, R17E & SEC 18, T4N, R17E, BM, CITY OF KETCHUM, BLAINE COUNTY, IDAHO
PREPARED FOR THE CITY OF KETCHUM
PROJECT INFORMATION
P:\subproj\1318-187 5th St Sidewalk\Construction\1318-187-ENG-2.dwg, 08/02/23 9:31 AM

**2022 CITY OF KETCHUM SIDEWALK IMPROVEMENTS
5TH ST (MAIN ST TO LEADVILLE)
Engineer's Construction and Engineering Cost Estimate**

#	REF	Item	Unit	Qty	Unit Cost	Item Cost
---	-----	------	------	-----	-----------	-----------

CONSTRUCTION CONTRACTOR BID ITEMS

1		Contractor mobilization (12% of Construction Bid Items)	ls	1	\$15,100.65	\$15,100.65
2		Traffic Control and Detours	ls	1	\$7,550.33	\$7,550.33
3		Sawcut asphalt			Incidental to Asphalt Removal	
4		Existing Asphalt Removal	sy	239	\$8.25	\$1,971.75
5		Remove And Dispose of Concrete	sf	207	\$17.50	\$3,622.50
6		Site clearing and grubbing	sy	65	\$9.00	\$585.00
7		Remove and dispose of tree and root ball system	ea	1	\$300.00	\$300.00
8		Relocate fire hydrant			Incidental to Item C11	
9		Remove and dispose of existing retaining Wall	ea	1	\$10,000.00	\$10,000.00
10		Remove and dispose landscape wall	lf	0	\$15.00	\$0.00
11		Relocate Utilities (by others). Contractor to coordinate work with utility owner.			By Utility Company	
12		Excavation	cy	148	\$30.00	\$4,440.00

CONSTRUCTION CONTRACTOR BID ITEMS CONTINUED

13		ITD SP-3 HMA, 1/2" gradation, PG58-28	ton	20	\$125.00	\$2,500.00
14		Concrete 6" rolled curb and gutter	lf	107	\$70.00	\$7,490.00
15		Concrete curb transition (6" rolled to zero reveal)	lf	18	\$75.00	\$1,350.00
16		Concrete zero reveal curb and gutter	lf	53	\$70.00	\$3,710.00
17		Concrete curb transition (0" rolled to 6" vertical)	lf	6	\$75.00	\$450.00
18		Construct concrete sidewalk: Flat work	sy	158	\$82.50	\$13,035.00
19		2"(-) crushed aggregate subbase	ton	89	\$33.00	\$2,928.36
20		3/4"(-) crushed aggregate base (4" compacted depth)	ton	41	\$33.00	\$1,348.17
21		Pavement Striping (12" crosswalk striping)	lf	142	\$3.00	\$426.00
22		Pavement Striping (4" parking)	lf	294	\$1.00	\$294.00
23		Pavement Striping (Thermoplastic crosswalk/stop bar, 24" wide)	lf	23	\$6.00	\$138.00
24		Cast Iron Truncated Dome Detectable Warning Insert	sf	30	\$75.00	\$2,250.00
25		Construct H-piles and boards retaining wall < 4' high	lf	105	\$400.00	\$42,000.00
26		Install Street light	ea	2	\$12,500.00	\$25,000.00
27		Erosion and Sediment Control	ls	1	\$2,000.00	\$2,000.00

A CONSTRUCTION CONTRACTOR BID ITEMS SUBTOTAL \$148,490.00

28	B	Contractor Bid Items Contingency Subtotal @ 10%	ls	1	\$14,849.00	\$14,850.00
----	---	---	----	---	-------------	-------------

C CONTRACTOR CONSTRUCTION SUBTOTAL (A+B = Subtotal) \$163,340.00

CONSTRUCTION ACTIVITIES ENGINEERING

29		Construction Staking (1.5% of Construction Subtotal)	ls	1	\$2,450.00	\$2,450.00
30		Construction Observation (1% of Construction Subtotal)	ls	1	\$1,630.00	\$1,630.00
31		Construction Materials Testing Field Sampling and Lab Work	ls	1	\$1,500.00	\$1,500.00
32		Contract Documents Review and Support (0.5% of Construction	ls	1	\$820.00	\$820.00

D CONSTRUCTION ACTIVITIES ENGINEERING ITEMS SUBTOTAL \$6,400.00

TOTAL (C + D) \$169,700.00