



## **Ketchum Urban Renewal Agency**

---

**P.O. Box 2315 | 480 East Ave. N. | Ketchum, ID 83340**

August 17, 2020

Chair and Commissioners  
Ketchum Urban Renewal Agency  
Ketchum, Idaho

### **Recommendation to Provide Direction on 2021 Sidewalk Segments**

#### Introduction/History

For FY 19/20, the Board approved the construction of sidewalk segments in Quadrant 3 , except Q3-2 but including the Washington side of Q3-2. Attachment A and B identify the segments and the estimated 2020 construction costs. After further discussion, the Board postponed all new sidewalk work scheduled in FY 20.

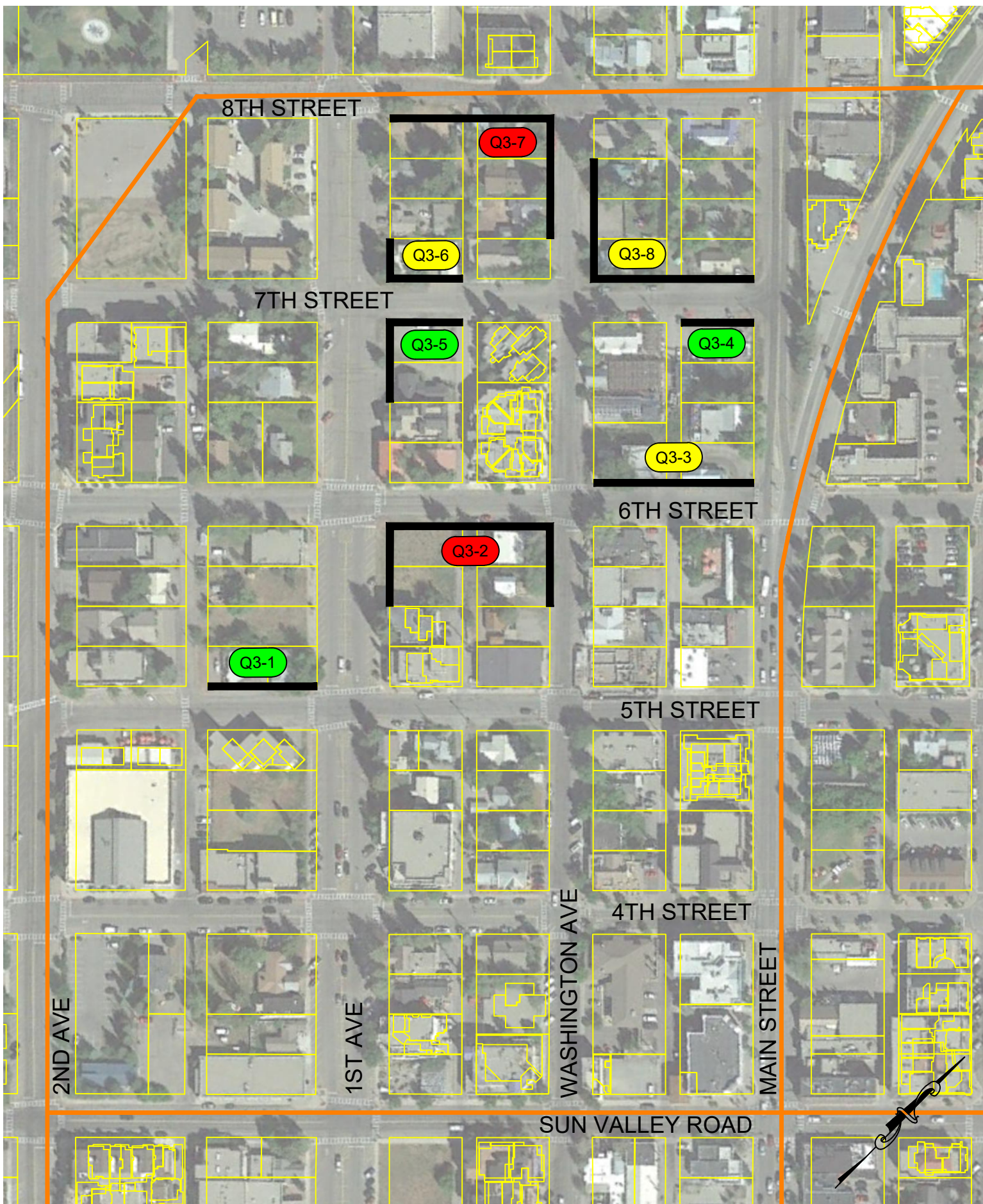
With the approach of the new fiscal year, the Board has the opportunity to identify sidewalk segments for FY 20/21. Attachment B identifies the missing sidewalk links throughout Ketchum.

#### Financial Requirement/Impact

Funds are included in the proposed FY 20/21 budget to support sidewalk projects.

#### Recommendation

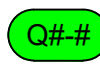
Staff is seeking direction from the Board on the priority segments to pursue in FY 20/21.



# QUADRANT 3

## LEGEND

GALENA CLASSIFICATION



Quadrant 3				
	<i>Galena Designation</i>	<i>R.O.W. Width</i>	<i>Lineal Footage</i>	<i>Approx. Construction Cost</i>
1	Green	5th St. (60' ROW)	150	\$ 41,250.00
2	Red	1st Ave. (100' ROW) 6th St. (60' ROW) Washington Ave. (60' ROW)	440	\$ 242,000.00
3	Yellow	6th St. (60' ROW)	220	\$ 78,650.00
4	Green	7th St. (60' ROW)	100	\$ 27,500.00
5	Green	7th St. (60' ROW) 1st Ave. (100' ROW)	210	\$ 57,750.00
6	Yellow	7th St. (60' ROW) 1st Ave. (100' ROW)	155	\$ 55,412.50
7	Red	8th St. (60' ROW) Washington Ave. (60' ROW)	390	\$ 214,500.00
8	Yellow	7th St. (60' ROW) Washington Ave. (60' ROW)	385	\$ 137,637.50



<p><b>Project Introduction</b></p> <p>The Ketchum URA initiated a sidewalk feasibility study by Galena Engineering in the Spring of 2018. The Ketchum downtown core was divided into four quadrants; 1- Southwest, 2- Southeast, 3- Northwest, 4- Northeast. Locations were observed in their current condition by Galena Engineering and classified as Green (easiest to construct), Yellow (moderately difficult to construct), Red (most difficult to construct).</p>		<p>QUADRANT 3</p> <p>LEGEND GALENA CLASSIFICATION <span style="color: green;">■</span> <span style="color: yellow;">■</span> <span style="color: red;">■</span></p>
<p><b>Site Summary</b></p> <p><i>Location:</i> 5th Street from 1st Avenue west to the Alley</p> <p><i>R.O.W. Width:</i> 60'</p> <p><i>Required Improvements:</i> 5' Sidewalk, 2' Curb and Gutter, 10' Parallel Parking</p> <p><i>Total Lineal Footage:</i> 150</p>		
<p><b>Galena Classification:</b> Green</p> <p><b>Observations</b></p> <p><i>Existing Curb</i> None</p> <p><i>Anticipated Grading Issues</i> None</p> <p><i>Encroachments</i> None</p> <p><i>Utility Relocation</i> Street light may need to be relocated</p>		
<p><b>Approx. Construction Cost:</b> \$ 41,250.00 (\$250/LF + Approx. 10% Design Fee)</p>		<p><b>Quadrant Map</b></p>

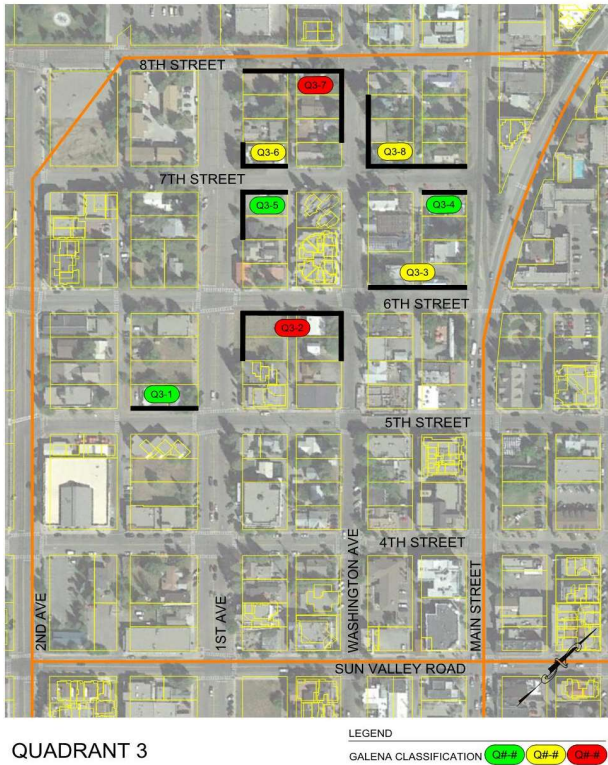
Photos

5th Street from Alley Facing East

5th Street from Mid-Block Facing North

5th Street from 1st Avenue Facing East



<b>Project Introduction</b> The Ketchum URA initiated a sidewalk feasibility study by Galena Engineering in the Spring of 2018. The Ketchum downtown core was divided into four quadrants; 1- Southwest, 2- Southeast, 3- Northwest, 4- Northeast. Locations were observed in their current condition by Galena Engineering and classified as Green (easiest to construct), Yellow (moderately difficult to construct), Red (most difficult to construct).		
<b>Site Summary</b>  <i>Location:</i> 1st Avenue from 6th Street south to Mid-Block & 6th Street from 1st Avenue to Washington Avenue & Washington Avenue from 6th Street south to Mid-Block <i>R.O.W. Width:</i> 100' (1st Avenue); 60' (6th Street); 60' (Washington Avenue) 60' ROW: 5' Sidewalk, 2' Curb and Gutter, 10' Parallel Parking <i>Required Improvements:</i> 100' ROW: 8' Sidewalk, 2' Curb and Gutter, 22' 60° Angled Parking <i>Total Lineal Footage:</i> 440		
<b>Galena Classification:</b> Red <b>Observations</b> <i>Existing Curb</i> None <i>Anticipated Grading Issues</i> Retainage will be required on 6th Street and Washington Avenue <i>Encroachments</i> Car port structure encroaching; medium conifers may need to be removed <i>Utility Relocation</i> Hydrant may need to be relocated		
<b>Approx. Construction Cost:</b> \$ 242,000.00 (\$500/LF + Approx. 10% Design Fee)		<b>Quadrant Map</b>

Photos



1st Avenue from 6th Street Facing South

6th Street from 1st Avenue Facing East

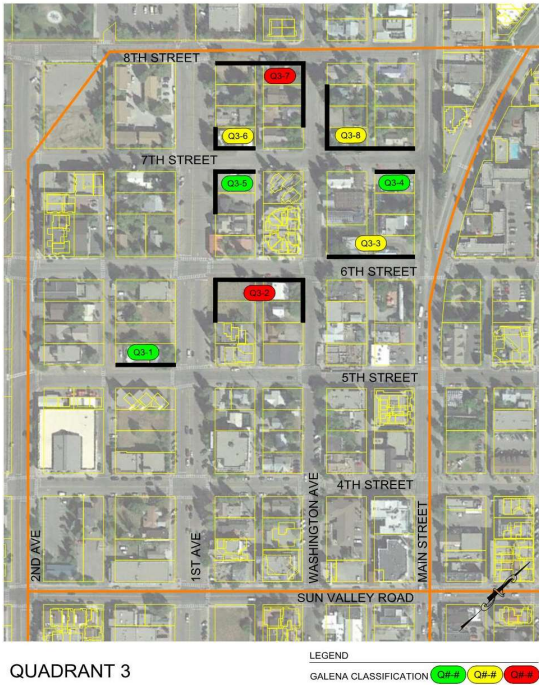
6th Street from Mid-Block Facing East

6th Street from Washington Avenue Facing West

Washington Avenue from 6th Street Facing South

Project:	Ketchum URA Sidewalk Feasibility Study	<div>Quadrant 3</div> <div>Site 2</div>	
Job No:	7535		
By:	SKS		
Date:	14-May-18		



<b>Project Introduction</b> The Ketchum URA initiated a sidewalk feasibility study by Galena Engineering in the Spring of 2018. The Ketchum downtown core was divided into four quadrants; 1- Southwest, 2- Southeast, 3- Northwest, 4- Northeast. Locations were observed in their current condition by Galena Engineering and classified as Green (easiest to construct), Yellow (moderately difficult to construct), Red (most difficult to construct).		 <p>QUADRANT 3</p> <p>LEGEND GALENA CLASSIFICATION</p>
<b>Site Summary</b> <i>Location:</i> 6th Street from Washington Avenue east to Main Street <i>R.O.W. Width:</i> 60' <i>Required Improvements:</i> 5' Sidewalk, 2' Curb and Gutter, 10' Parallel Parking <i>Total Lineal Footage:</i> 220		
<b>Galena Classification:</b> Yellow		
<b>Observations</b> <i>Existing Curb</i> None <i>Anticipated Grading Issues</i> Retainage will be required at the corner of 6th Street and Washington Avenue; building threshold elevation may result in challenges <i>Encroachments</i> Minor landscaping <i>Utility Relocation</i> Power pole and transformer mid-block may cause clearance issues		
<b>Approx. Construction Cost:</b> \$ 78,650.00 (\$325/LF + Approx. 10% Design Fee)		<b>Quadrant Map</b>

Photos



Northeast corner of 6th Street and Washington Avenue



6th Street from Washington Avenue Facing East



6th Street from Mid-Block Facing East



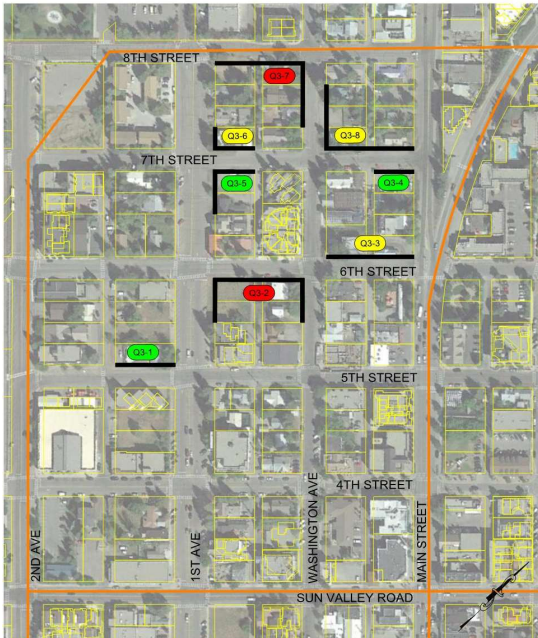
6th Street from Mid-Block Facing West





Northwest Corner of 6th Street and Main Street Facing East

Project:	Ketchum URA Sidewalk Feasibility Study	Quadrant 3 Site 3	
Job No:	7535		
By:	SKS		
Date:	14-May-18		



<b>Project Introduction</b> The Ketchum URA initiated a sidewalk feasibility study by Galena Engineering in the Spring of 2018. The Ketchum downtown core was divided into four quadrants; 1- Southwest, 2- Southeast, 3- Northwest, 4- Northeast. Locations were observed in their current condition by Galena Engineering and classified as Green (easiest to construct), Yellow (moderately difficult to construct), Red (most difficult to construct).		 QUADRANT 3 LEGEND GALENA CLASSIFICATION <span style="color: green;">■</span> <span style="color: yellow;">■</span> <span style="color: red;">■</span>
<b>Site Summary</b> <i>Location:</i> 7th Street from Warm Springs Road west to Alley <i>R.O.W. Width:</i> 60' <i>Required Improvements:</i> 5' Sidewalk, 2' Curb and Gutter, 10' Parallel Parking <i>Total Lineal Footage:</i> 100		
<b>Galena Classification:</b> <span style="background-color: #90EE90;">Green</span> <b>Observations</b> <i>Existing Curb</i> None <i>Anticipated Grading Issues</i> Minor grading challenges near Warm Springs intersection <i>Encroachments</i> None <i>Utility Relocation</i> None		
<b>Approx. Construction Cost:</b> \$    27,500.00    (\$250/LF + Approx. 10% Design Fee)		
		<b>Quadrant Map</b>

Photos



7th Street from Alley Facing East

7th Street Mid-Block Facing East



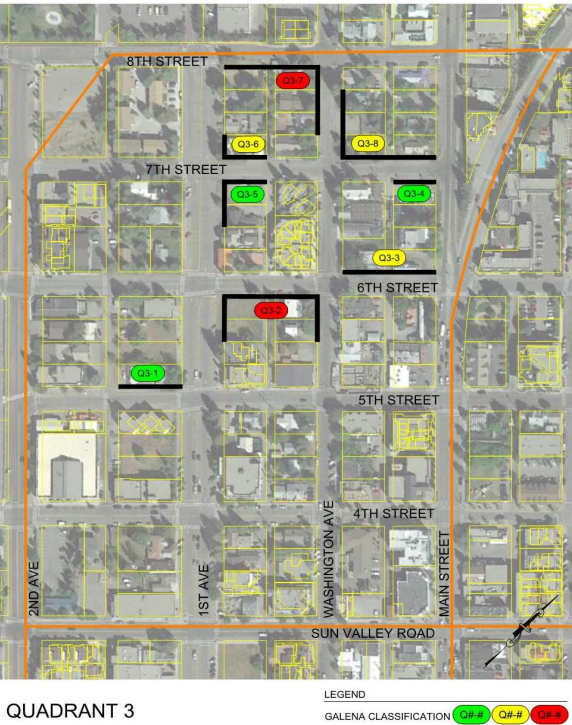
**Project Introduction**  
The Ketchum URA initiated a sidewalk feasibility study by Galena Engineering in the Spring of 2018. The Ketchum downtown core was divided into four quadrants; 1- Southwest, 2- Southeast, 3- Northwest, 4- Northeast. Locations were observed in their current condition by Galena Engineering and classified as Green (easiest to construct), Yellow (moderately difficult to construct), Red (most difficult to construct).

**Site Summary**  
*Location:* 1st Avenue from 7th Street south to Mid-Block & 7th Street from 1st Avenue east to Alley  
*R.O.W. Width:* 100' (1st Avenue); 60' (7th Street)  
60' ROW: 5' Sidewalk, 2' Curb and Gutter, 10' Parallel Parking  
*Required Improvements:* 100' ROW: 8' Sidewalk, 2' Curb and Gutter, 22' 60° Angled Parking  
*Total Lineal Footage:* 210

**Galena Classification:** Green

**Observations**  
*Existing Curb* None  
*Anticipated Grading Issues* None  
*Encroachments* None  
*Utility Relocation* None

**Approx. Construction Cost:** \$ 57,750.00 (\$250/LF + Approx. 10% Design Fee)



Quadrant Map

**Photos**



7th Street from Alley Facing East

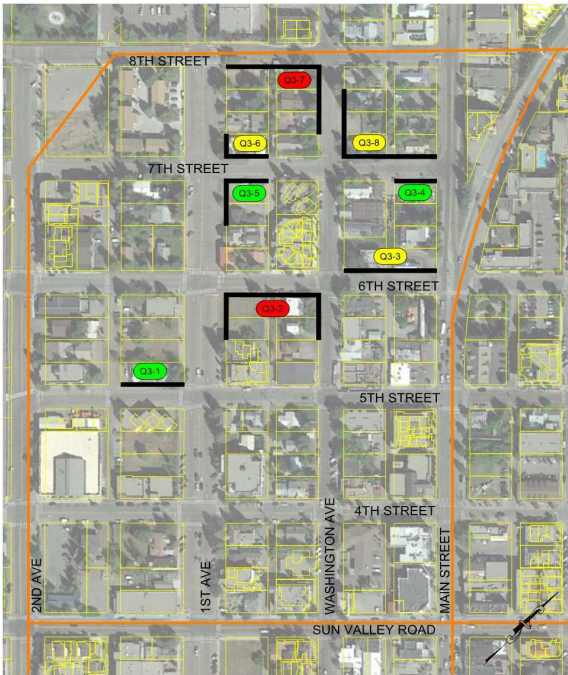



1st Avenue from 7th Street Facing South

Project:	Ketchum URA Sidewalk Feasibility Study
Job No:	7535
By:	SKS
Date:	14-May-18

Quadrant 3  
Site 5

Galena Engineering, Inc.  
civil engineering & land surveyors



<div><div>Project Introduction</div><div>The Ketchum URA initiated a sidewalk feasibility study by Galena Engineering in the Spring of 2018. The Ketchum downtown core was divided into four quadrants; 1- Southwest, 2- Southeast, 3- Northwest, 4- Northeast. Locations were observed in their current condition by Galena Engineering and classified as Green (easiest to construct), Yellow (moderately difficult to construct), Red (most difficult to construct).</div></div>		<div><div>QUADRANT 3</div><div>LEGEND GALENA CLASSIFICATION <span>Green</span> <span>Yellow</span> <span>Red</span></div></div>			
<div><div>Site Summary</div><div><div>Location:</div><div>1st Avenue from 7th Street north along 111 E 7th Street &amp; 7th Street from 1st Avenue east to Alley</div></div><div><div>R.O.W. Width:</div><div>100' (1st Avenue); 60' (7th Street) 60' ROW: 5' Sidewalk, 2' Curb and Gutter, 10' Parallel Parking</div></div><div><div>Required Improvements:</div><div>100' ROW: 8' Sidewalk, 2' Curb and Gutter, 22' 60° Angled Parking</div></div><div><div>Total Lineal Footage:</div><div>155</div></div></div>					
<div><div>Galena Classification:</div><div>Yellow</div></div> <div><div>Observations</div><div><div>Existing Curb</div><div>None</div></div><div><div>Anticipated Grading Issues</div><div>Paver driveway may pose grading challenges</div></div><div><div>Encroachments</div><div>None</div></div><div><div>Utility Relocation</div><div>Hydrant may need to be relocated</div></div></div>					
<div><div>Approx. Construction Cost:</div><div>\$ 55,412.50 (\$325/LF + Approx. 10% Design Fee)</div></div>		<div>Quadrant Map</div>			
<div><div>Photos</div><div></div><div><div>1st Avenue from 111 E 7th Street Facing South</div><div>7th Street from 1st Avenue Facing East</div><div>7th Street from 1st Avenue Facing East</div></div></div>					
<div><div>Project:</div><div>Ketchum URA Sidewalk Feasibility Study</div></div> <div><div>Job No:</div><div>7535</div></div> <div><div>By:</div><div>SKS</div></div> <div><div>Date:</div><div>14-May-18</div></div>		<div><div>Quadrant 3</div><div>Site 6</div></div> <div><div>Galena Engineering, Inc.</div><div>civil engineering &amp; land surveyors</div></div>			



<b>Project Introduction</b> The Ketchum URA initiated a sidewalk feasibility study by Galena Engineering in the Spring of 2018. The Ketchum downtown core was divided into four quadrants; 1- Southwest, 2- Southeast, 3- Northwest, 4- Northeast. Locations were observed in their current condition by Galena Engineering and classified as Green (easiest to construct), Yellow (moderately difficult to construct), Red (most difficult to construct).		 QUADRANT 3 LEGEND GALENA CLASSIFICATION (Green) (Yellow) (Red)
<b>Site Summary</b>  <i>Location:</i> 8th Street from 1st Avenue east to Washington Avenue & Wasington Avenue from 8th Street south to 731 N Washington Avenue Frontage. <i>R.O.W. Width:</i> 60' (8th Street); 60' (Washington Avenue) <i>Required Improvements:</i> 5' Sidewalk, 2' Curb and Gutter, 10' Parallel Parking <i>Total Lineal Footage:</i> 390		
<b>Galena Classification:</b> Red <b>Observations</b> <i>Existing Curb</i> None <i>Anticipated Grading Issues</i> Major grading challenges will require retaining wall for a large portion of 8th Street sidewalk, and a portion of Washington Avenue <i>Encroachments</i> None <i>Utility Relocation</i> Hydrant may need to be relocated		
<b>Approx. Construction Cost:</b> \$ 214,500.00 (\$500/LF + Approx. 10% Design Fee)		

Quadrant Map

Photos

Washington Avenue from Mid-Block Facing North

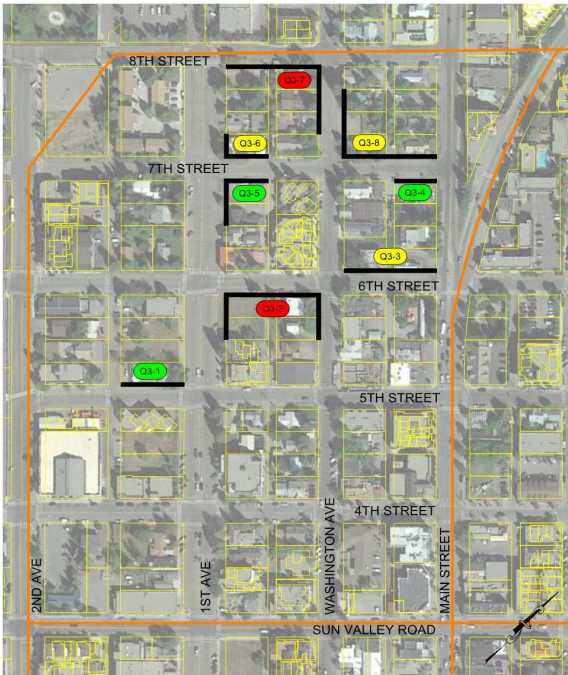
8th Street from Washington Avenue Facing West


8th Street from Mid-Block Facing West- Carport Encroachment


8th Street from Mid-Block Facing West- Major Grading Issues

Southeast Intersection of 8th Street and 1st Avenue



<b>Project Introduction</b> The Ketchum URA initiated a sidewalk feasibility study by Galena Engineering in the Spring of 2018. The Ketchum downtown core was divided into four quadrants; 1- Southwest, 2- Southeast, 3- Northwest, 4- Northeast. Locations were observed in their current condition by Galena Engineering and classified as Green (easiest to construct), Yellow (moderately difficult to construct), Red (most difficult to construct).		 <p>QUADRANT 3</p> <p>LEGEND GALENA CLASSIFICATION Green Yellow Red</p>
<b>Site Summary</b>  <div><div>Location:</div><div>7th Street from Warm Springs Road west to Washington Avenue &amp; Washington Avenue from 7th Street north to 760 N Washington Avenue Frontage</div></div> <div><div>R.O.W. Width:</div><div>60' (7th Street); 60' (Washington Avenue)</div></div> <div><div>Required Improvements:</div><div>5' Sidewalk, 2' Curb and Gutter, 10' Parallel Parking</div></div> <div><div>Total Lineal Footage:</div><div>385</div></div>		
<b>Galena Classification:</b> Yellow <b>Observations</b> <div><div>Existing Curb</div><div>None</div></div> <div><div>Anticipated Grading Issues</div><div>Minor grading challenges near Warm Springs intersection</div></div> <div><div>Encroachments</div><div>Large trees may need to be removed</div></div> <div><div>Utility Relocation</div><div>None</div></div>		
<b>Approx. Construction Cost:</b> \$   137,637.50    (\$325/LF + Approx. 10% Design Fee)		

<b>Photos</b>  <div><div>7th Street from Warm Springs Road Facing West</div><div>7th Street from Mid-Block Facing West</div><div>Washington Avenue from 7th Street Facing North</div><div>Washington Avenue from Mid-Block Facing North</div></div>		<b>Quadrant Map</b>
---	--	---------------------

Project:	Ketchum URA Sidewalk Feasibility Study	<div>Quadrant 3</div> <div>Site 8</div>	
Job No:	7535		
By:	SKS		
Date:	14-May-18		



**2020 SIDEWALK INFILL**  
**Rough Order Cost Estimate**

Task No.	Segment No.	Street Name	2019 Cost Estimate*	2020 Cost Escalation (5%)	Total Rough Order Cost Estimate
1.00	Q1-1	Q1-1, 1st Street from East Ave east to alley, 150 feet, Green	\$53,800	\$2,690.00	\$56,490.00
		<b>Total Cost Quadrant 1</b>	<b>\$53,800</b>		<b>\$56,490.00</b>
5.00	Q2-1	Q2-1, River St from 2nd Ave east to the Alley & 2nd Ave from River St north along 191 W River St, 260 ft, Yellow	\$146,500	\$7,325.00	\$153,825.00
6.00	Q2-2	Q2-2, 1st Street from 2nd Avenue east to the Alley, 150 ft, Yellow	\$63,600	\$3,180.00	\$66,780.00
7.00	Q2-3	Q2-3, 1st Street from 1st Avenue west to the Alley, 150 feet, Yellow	\$69,500	\$3,475.00	\$72,975.00
8.00	Q2-4	Q2-4, 2nd Street from 2nd Avenue east to the Alley, 150 feet, Green	\$65,400	\$3,270.00	\$68,670.00
9.00	Q2-5	Q2-5, 2nd Street from 1st Avenue west to Alley & 1st Avenue north along 211 N 1st Avenue, 205 feet, Yellow	\$76,500	\$3,825.00	\$80,325.00
		<b>Total Cost Quadrant 2</b>	<b>\$421,500</b>		<b>\$442,575.00</b>
10.00	Q3-1	Q3-1, 5th Street from 1st Avenue west to the Alley, 150 ft, Green	\$90,692	\$4,534.61	\$95,226.79
11.00	Q3-2	Q3-2, 1st Ave from 6th St sth to Mid-Blk & 6th St from 1st Ave to Wash Ave & Wash Ave from 6th St sth to Mid-Blk, 440 feet, Red (portion along 1st Ave to be built by proposed development)	\$242,000	\$12,100.00	\$254,100.00
13.00	Q3-4	Q3-4, 7th Street from Warm Springs Road west to Alley, 100 feet, Green	\$109,799	\$5,489.96	\$115,289.06
15.00	Q3-6	Q3-6, 1st Avenue from 7th Street north along 111 E 7th Street & 7th Street from 1st Avenue east to Alley, 155 ft, Yellow	\$179,933	\$8,996.66	\$188,929.86
		<b>Total Cost Quadrant 3</b>	<b>\$622,424</b>		<b>\$653,545.70</b>
		<b>TOTAL COSTS</b>	<b>\$1,097,724</b>		<b>\$1,152,610.70</b>

\*Depending on section this is the 2019 contractors bid price or engineers preliminary estimate



# Ketchum Sidewalk Plan

- Sidewalks Under Construction 
- Sidewalks Completed 2015-2020 
- Future Sidewalks Not Yet Funded 