



## City of Ketchum

May 9, 2022

Mayor Bradshaw and City Councilors  
City of Ketchum  
Ketchum, Idaho

Mayor Bradshaw and City Councilors:

### **Briefing on Warm Springs Transportation Analysis and Provide Direction on Short-Term Actions**

#### Recommendation and Summary

City staff and HDR Engineering provided a briefing to the City Council on April 11<sup>th</sup> regarding future transportation enhancements to Warm Springs Road. On May 5<sup>th</sup>, an open house was conducted at the old lumber yard property to receive feedback from the public, business and property owners. Staff is planning to conduct an additional on-line survey over the next two weeks regarding long-term potential enhancements. Staff is recommending the city proceed with two short-term actions based on feedback during the open house:

- Procure new rapid flashing crosswalk at bike path (attachment #1)
- Implement traffic calming pilot project (attachment #2)

**"I move to direct staff to proceed with the traffic calming pilot project and procure a new rapid flashing crosswalk system."**

#### Introduction and History

The city retained HDR Engineering to complete a technical analysis of future transportation enhancements on Warm Springs Road between Main Street and Saddle Road. Specifically, the scope of work included:

- Complete alternatives analysis of intersection improvements for 10<sup>th</sup> and Lewis Streets
- Evaluate pedestrian improvements from Saddle to Main including traffic calming strategies

Staff will have the public engagement boards set up in meeting room so that the Council can review the feedback to date regarding potential long-term improvements. There was good turnout from the public. There was strong support to move forward with the traffic calming pilot project and a new crosswalk system. Specifically, participants preferred either the advanced warning system or the in-pavement flasher system.

#### Sustainability Impact

No direct impact. The project seeks to improve pedestrian and bicycle facilities along the corridor which should increase alternative mobility choices.

#### Financial Impact

The traffic calming pilot can be funded from existing street maintenance funds. The FY22 approved Capital Improvement Plan has \$25,000 allocated for a new crosswalk system.

#### Attachments

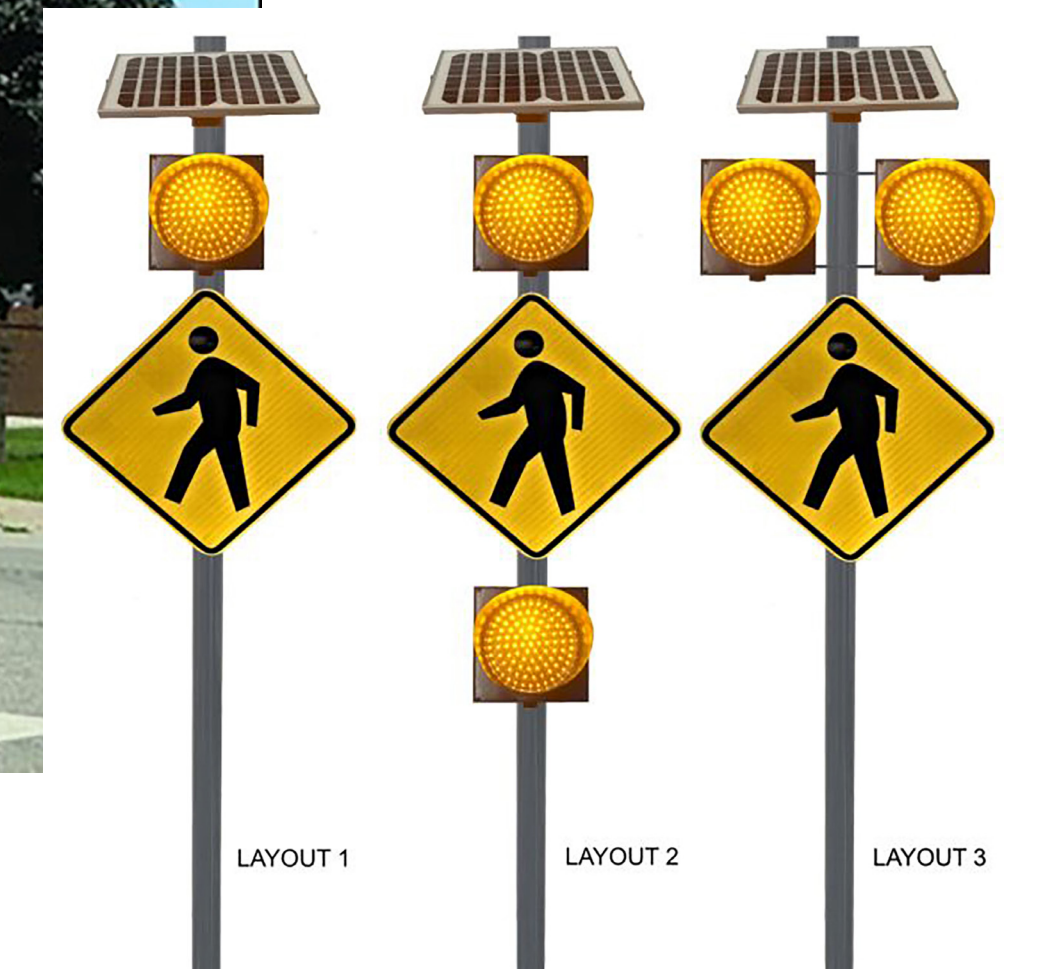
1. Crosswalk options
2. Traffic calming pilot project



Overhead Rapid Flashing Beacon



Advance Warning Flasher



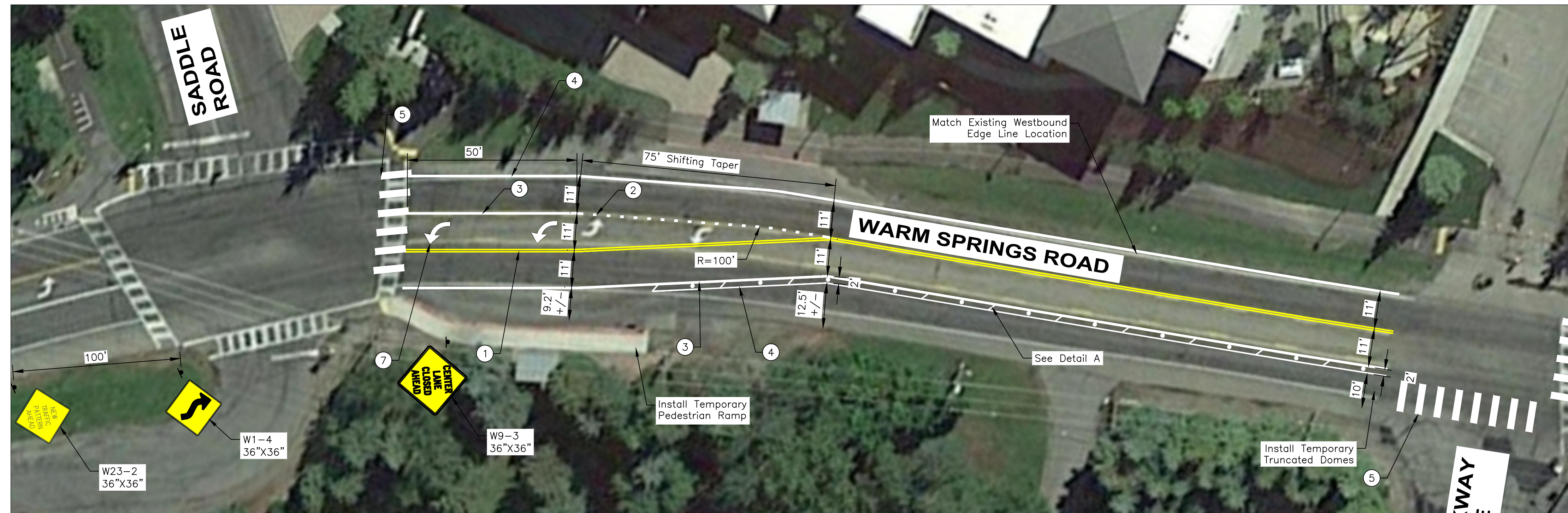
Median Rapid Flashing Beacon



In Pavement Flasher

# GENERAL NOTES

1. Proposed Pavement Marking Layout And Dimensions Are Based On Aerial Imagery And Are Approximate. Contractor To Verify Layout And Dimensions Prior To Placing Proposed Pavement Markings.
2. All Pavement Markings Shall Be Paint.
3. Completely Obliterate All Conflicting Pavement Markings.
4. Pavement Marking Dimensions Shown Are From Center Of Marking To Edge Of Pavement.
5. Match Existing Locations Of Crosswalks Markings.

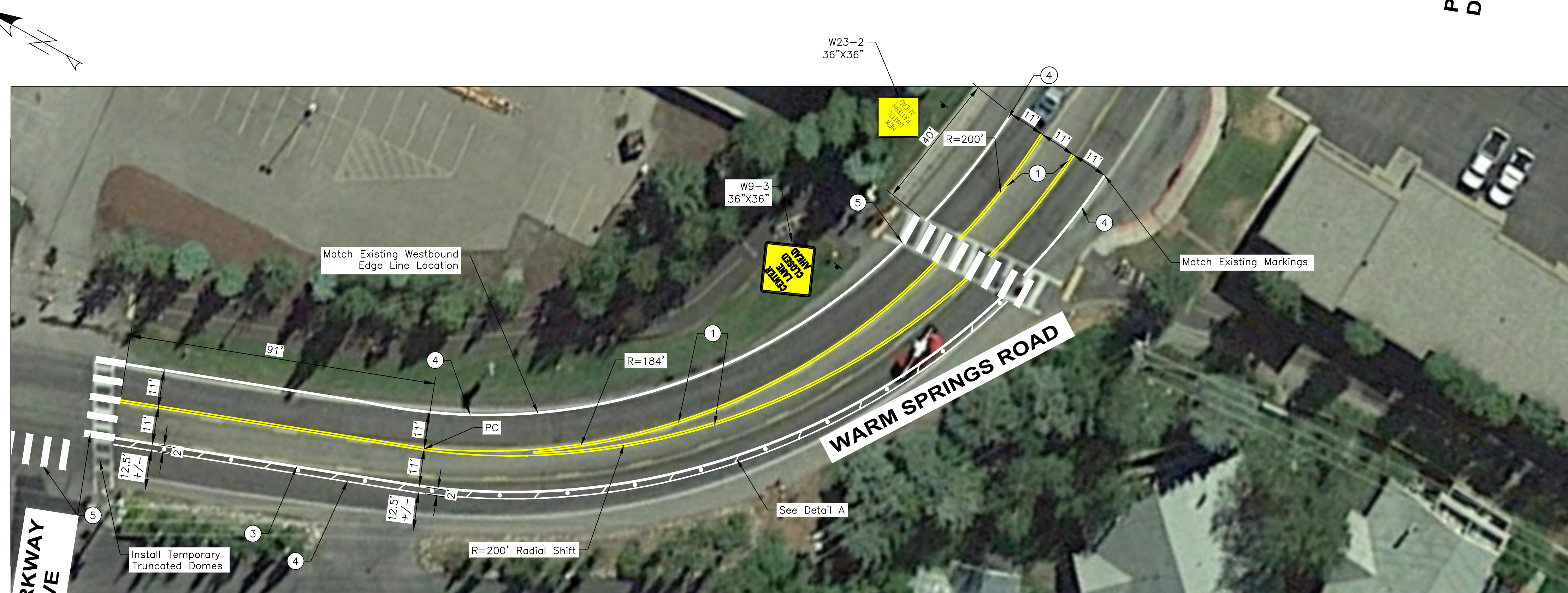
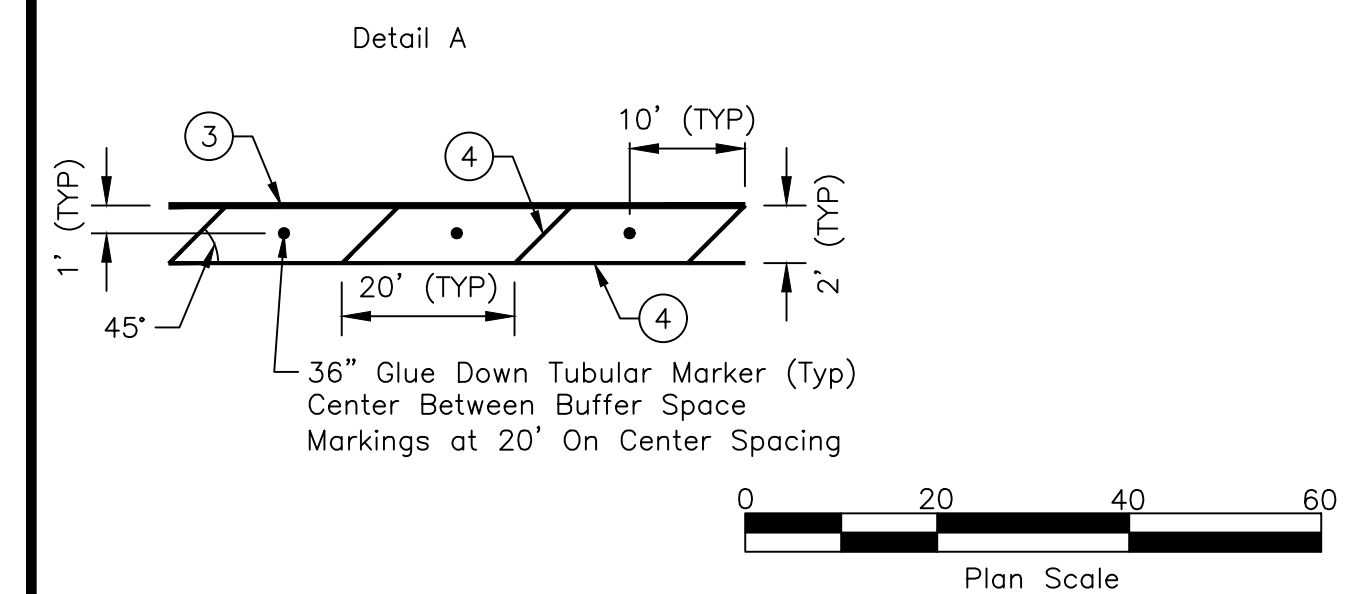


See Below

PARKWAY DRIVE

# PAVEMENT MARKING LEGEND

- ① 4" Double Yellow
- ② 8" Dotted White  
2' Length & 6" Gap
- ③ 8" Solid White
- ④ 4" Solid White
- ⑤ 24" White - Cross Walk (9' Wide)
- ⑥ 24" White - Stop Bar
- ⑦ White Left Turn Arrow



See Above

PARKWAY DRIVE

Plotted: 5/4/2022 2:07:19 PM  
File Name: C:\pwworking\west01\42288749\10326061\_SIGN\_001.dwg

Revisions:	• SIGNATURES •		
Design By: HDR	Date: 05/22	Drawn By: HDR	Date: 05/22

• DETAIL TITLE •

## Pavement Marking Plan

**HDR** 412 E. PARKCENTER BLVD.  
SUITE 100  
BOISE, ID 83706

Preliminary  
Not For Construction  
1633