



City of Ketchum

**KETCHUM ARTS COMMISSION MEETING AGENDA MEMO**

Meeting Date:  Staff Member/Dept:

Agenda Item:

Recommended Motion:

I move to approve the artwork submissions selected by the majority of Arts Commissioners to be installed on the six available Main Street utility boxes.

Reasons for Recommendation:

A call for artists was approved by the Arts Commission and published in November 2025 to install artwork on the six new utility boxes installed as part of the Main Street rebuild art and history installations.

The deadline for submissions was extended from February 12, 2026, to March 16, 2026, to allow interested artists more time to submit their designs.

Five artists submitted 22 eligible designs.

Policy Analysis and Background (non-consent items only):

Sustainability Impact:

None OR state impact here:

Financial Impact:

None OR Adequate funds exist in account:	The selected artist(s) will receive a \$1,000 stipend for each piece of work selected to be placed on exhibit. The artwork installation costs are still to be determined. This project is paid for via the art and history installation funds dedicated to the
--	--

	Main Street rebuild project. Adequate funds are available in this account.
--	--

Attachments:

- |   |
|---|
| 1. 2026 Utility Box Artwork Submissions |
|---|



# Main Street Utility Box Art Call for Artists Selection

April 14, 2026



# Utility Box Art Installation Schedule

## ORIGINAL AND REVISED SCHEDULE

- **November 24, 2026:** Call for artists released
- **February 12, 2026:** Application deadline
  - This date was extended to March 16, 2026
- **February 19, 2026:** Artwork reviewed and selected by the Arts Commission
  - This date was extended to March 19, 2026
- **February 23, 2026:** Selected artist notified
  - This date was extended to March 20, 2026
- **Spring 2026:** Artwork installation

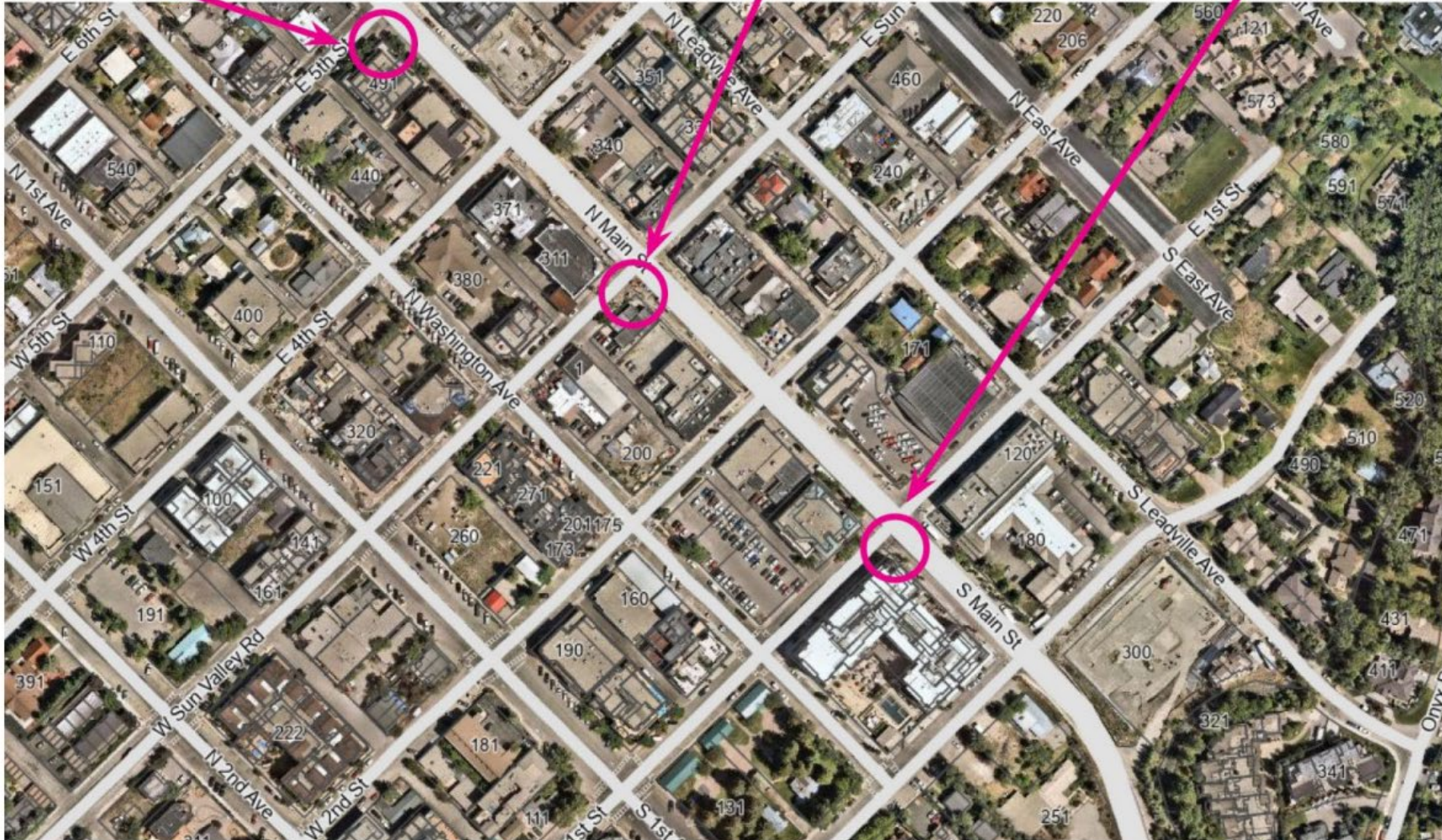


# Utility Box Art Installation Locations

5th Street & Main Street

Sun Valley Road & Main Street

1st Street & Main Street





# Utility Box Art Quantities and Sizes

THE CALL FOR ARTISTS INCLUDES 6 TOTAL BOXES IN 3 LOCATIONS, INCLUDING:

## 3 Total large boxes

- 44" wide; 29.5" deep; 70" tall

## 3 Total small boxes

- 25" wide; 18" deep; 48" tall





# Submissions for the Large Boxes



# Utility Box Art Submission *(large box)*

## SUN VALLEY SLOPES





# Utility Box Art Submission *(small or large box)*

## SENSE OF PLACE

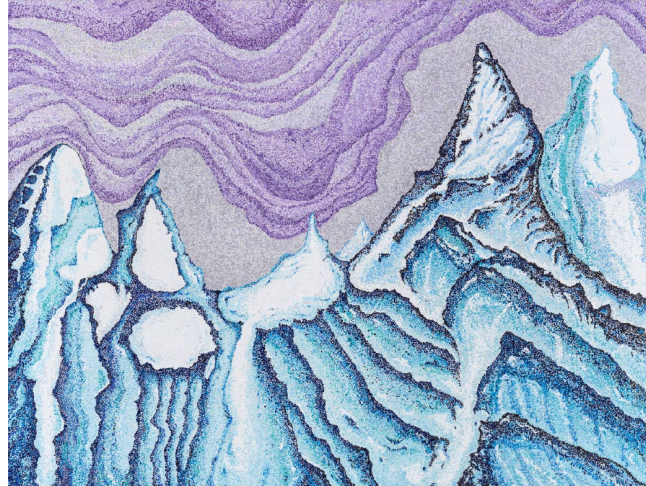
**Side 1**



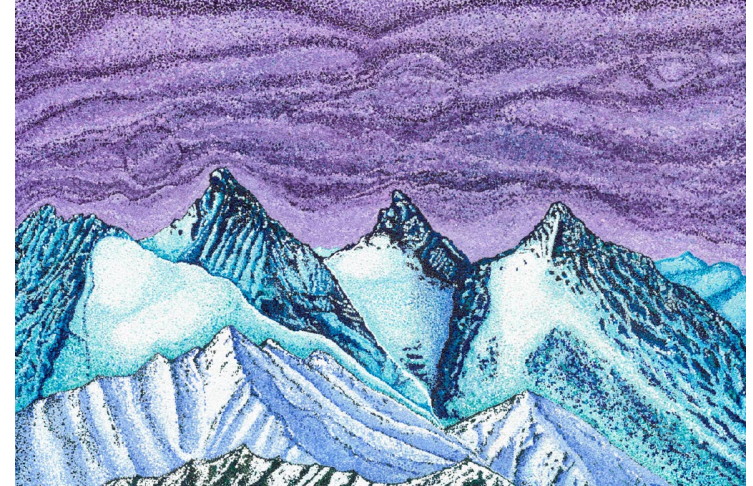
**Side 2**



**Side 3**



**Side 4**





# Utility Box Art Submission *(large box)*

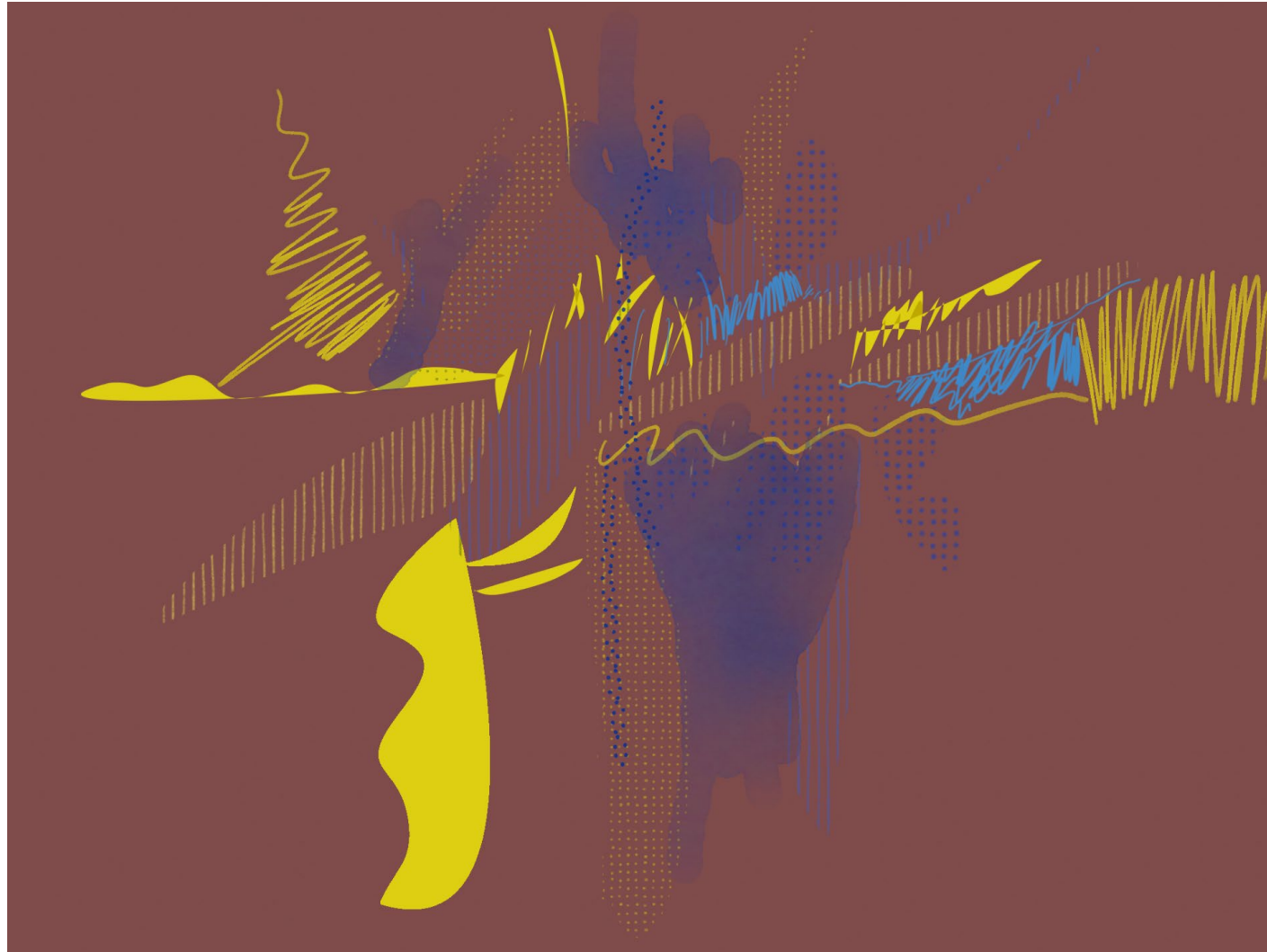
## WILDFLOWERS ON MAIN STREET





# Utility Box Art Submission *(small or large box)*

SAGE





# Utility Box Art Submission *(large box)*

## FLY FISHING FLIES





# Utility Box Art Submission *(small or large box)*

MOONLIT BALDY





# Utility Box Art Submission *(large box)*

CARRIED BY THE LAND

Side 1



Side 2



Side 3



Side 4

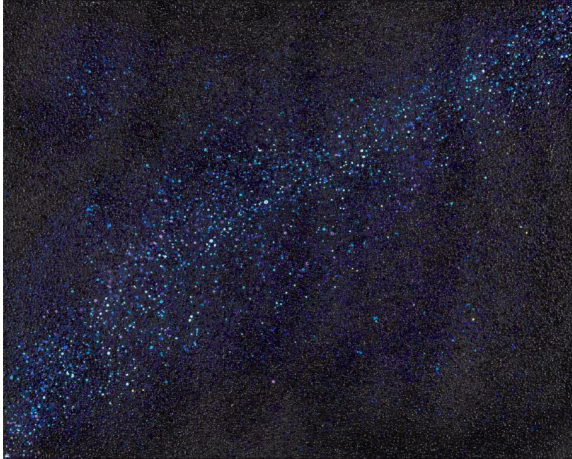




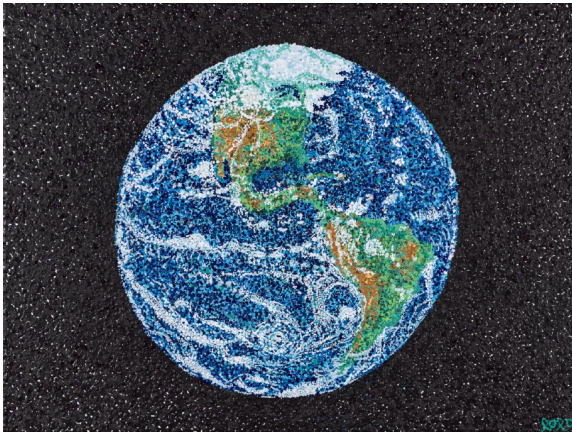
# Utility Box Art Submission *(small or large box)*

## DARK SKY LIVING

Side 1



Side 2



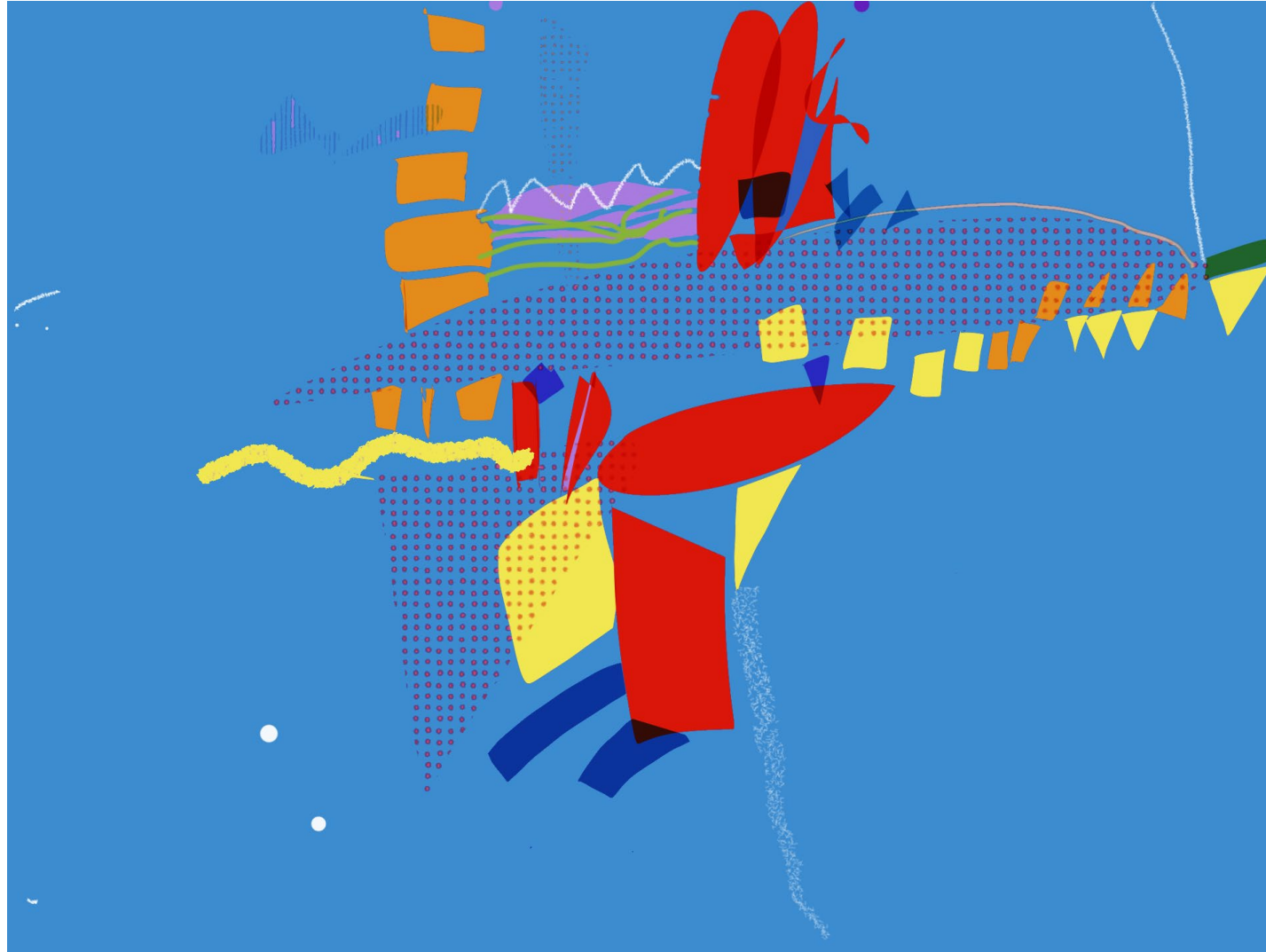
Sides 3 and 4





# Utility Box Art Submission *(small or large box)*

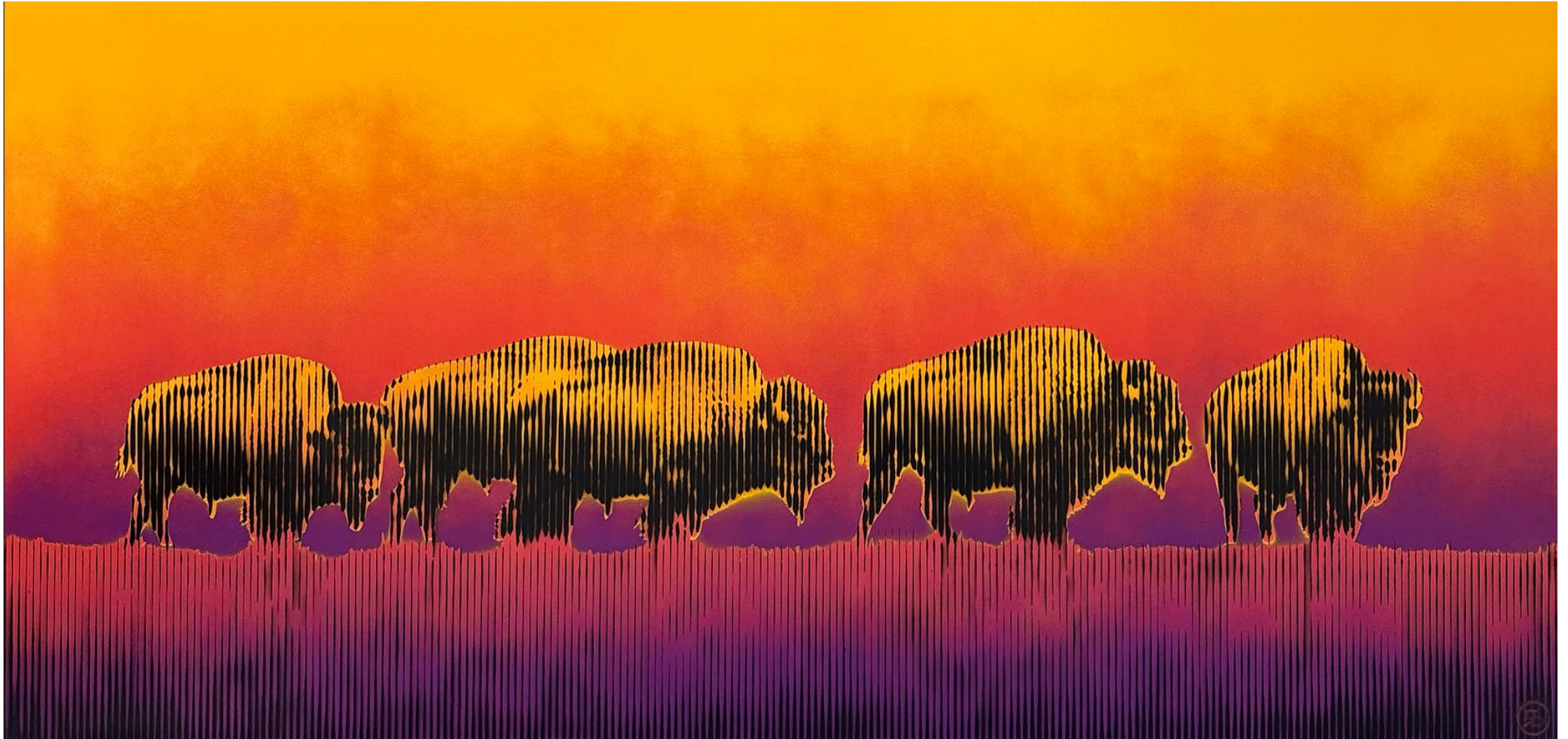
BLUE SKY





# Utility Box Art Submission *(large box)*

## GUARDIANS





# Utility Box Art Submission *(small or large box)*

PERFORMER





# Utility Box Art Submission (small or large box)

THE STARS ASTOUND MAKE ME SMALL





# Utility Box Art Submission *(large box)*

## LIVING THE SEASONS





# Utility Box Art Submission *(small or large box)*

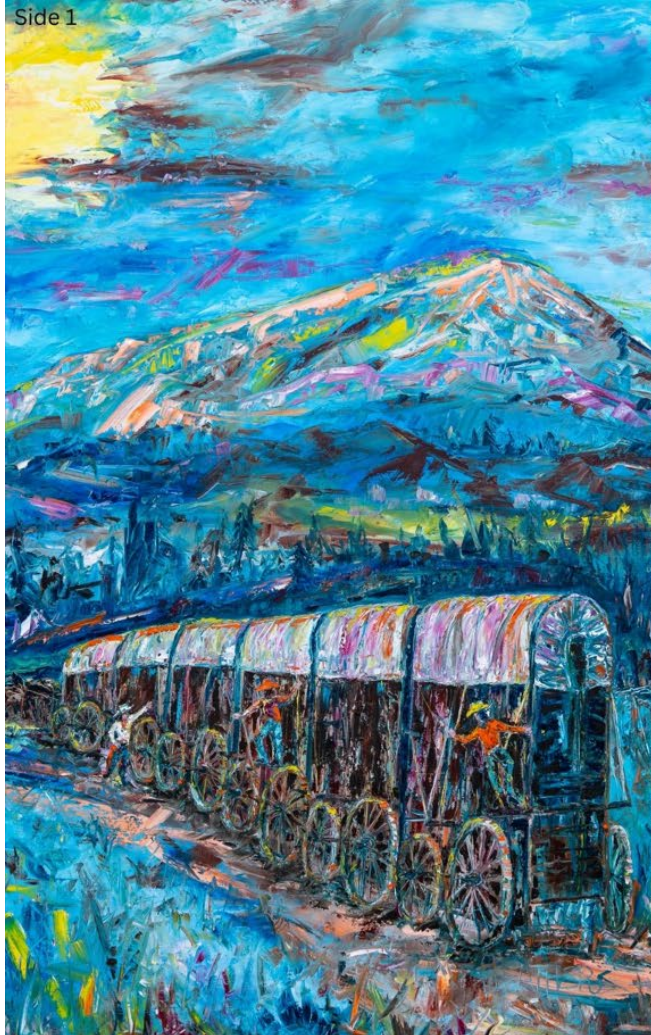
DARK NIGHT





# Utility Box Art Submission *(large box)*

WHERE IT ALL MEETS





# Utility Box Art Submission *(small or large box)*

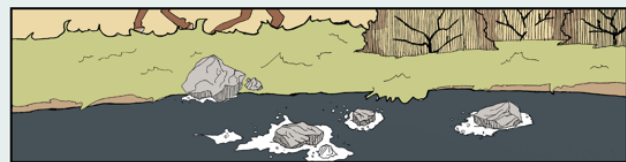
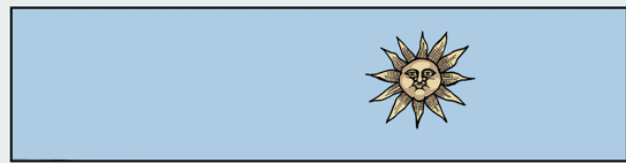
RIVER RUN



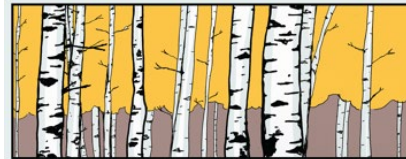
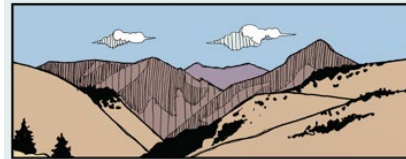


# Utility Box Art Submission *(large box)*

## DAY ON THE TRAIL



## NOSTALGIC ASPEN TREES



## RAINY DAY



## SNOW DAY





# Utility Box Art Submission *(small or large box)*

WIND RIVER





# Submissions for the Small Boxes



# Utility Box Art Submission *(small box)*

ASPENS





# Utility Box Art Submission *(small or large box)*

RIVER RUN





# Utility Box Art Submission *(small box)*

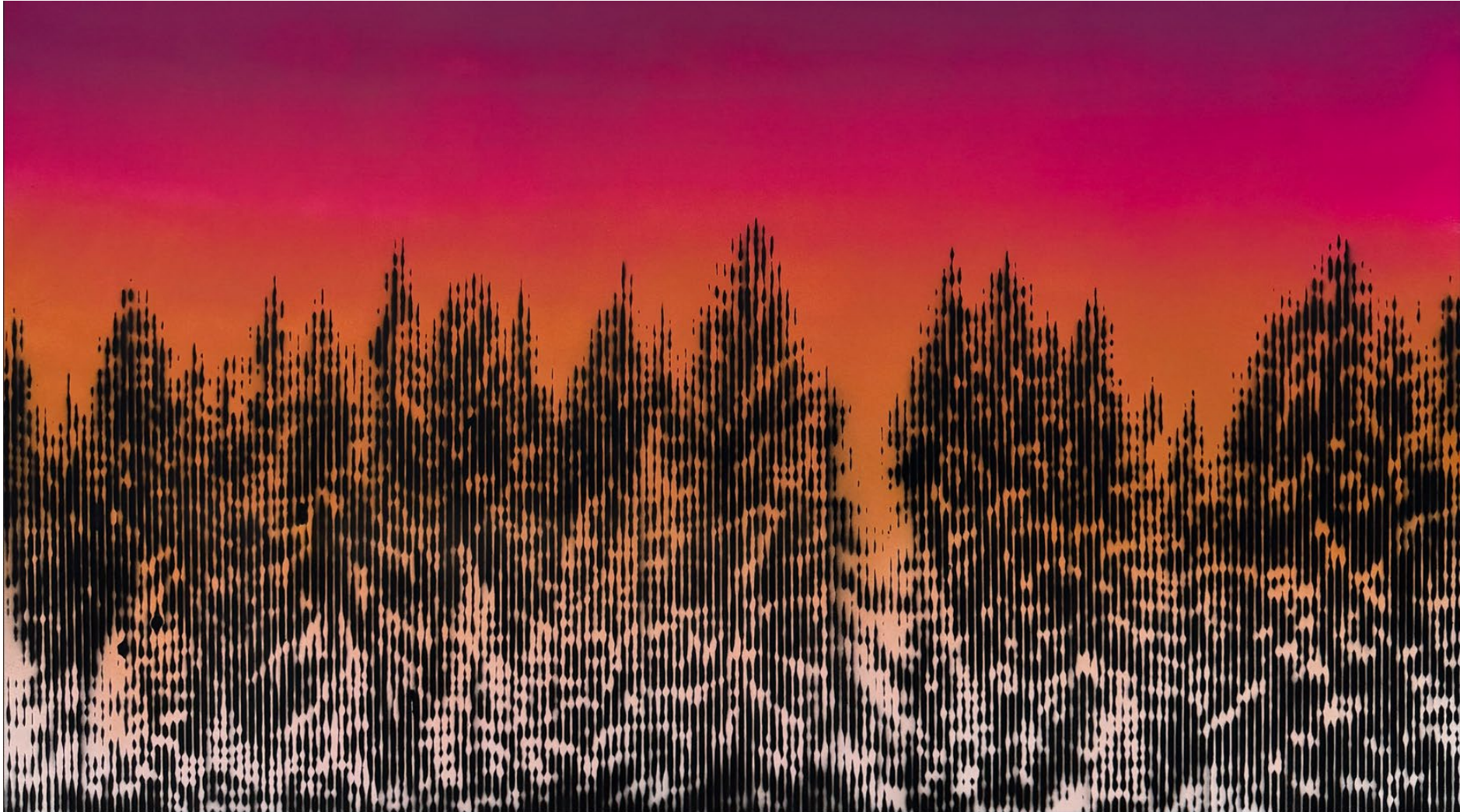
PASSING THROUGH TOGETHER





# Utility Box Art Submission *(small box)*

SILENT PINES

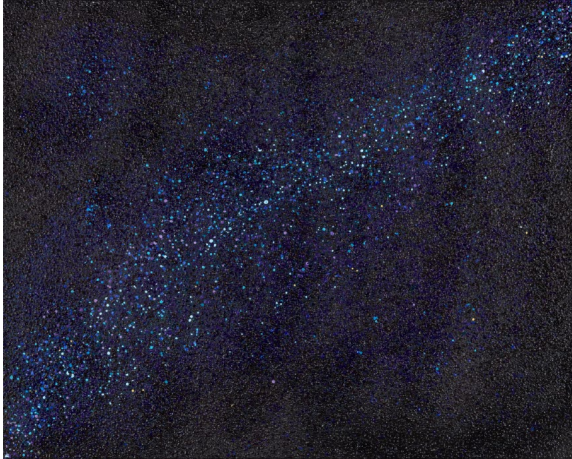




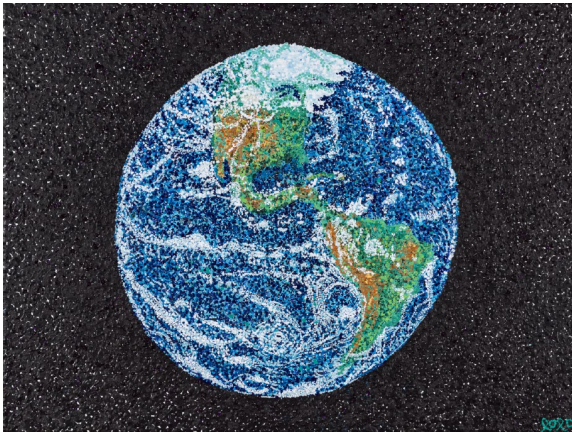
# Utility Box Art Submission *(small or large box)*

## DARK SKY LIVING

Side 1



Side 2



Sides 3 and 4





# Utility Box Art Submission (small or large box)

PERFORMER





# Utility Box Art Submission *(small box)*

## SUN VALLEY SLOPES





# Utility Box Art Submission (small or large box)

THE STARS ASTOUND MAKE ME SMALL





# Utility Box Art Submission *(small or large box)*

WIND RIVER





# Utility Box Art Submission *(small box)*

MOUNTAIN MAGIC





# Utility Box Art Submission *(small or large box)*

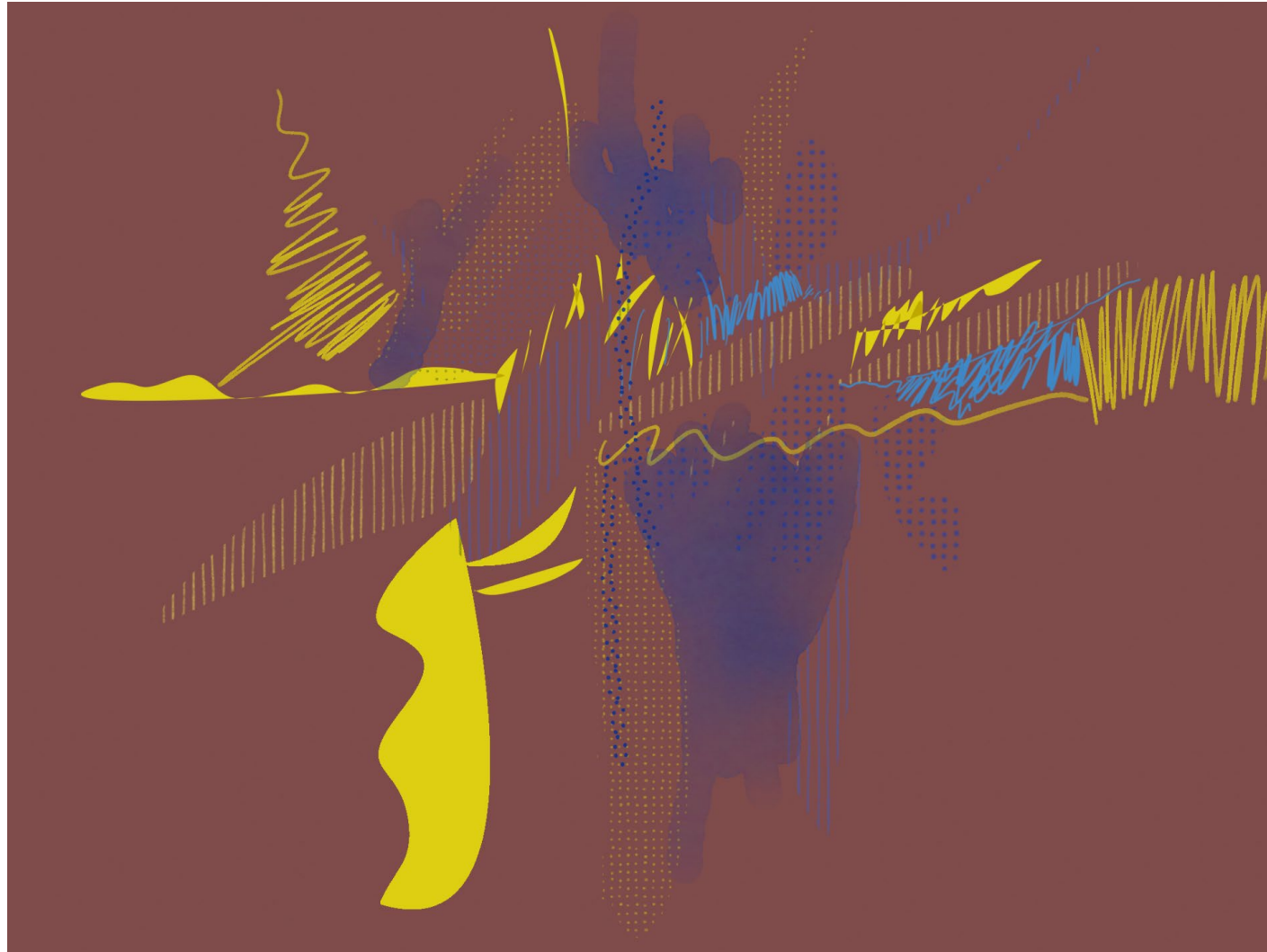
MOONLIT BALDY





# Utility Box Art Submission *(small or large box)*

SAGE





# Utility Box Art Submission *(small box)*

## WILDFLOWERS ON MAIN STREET





# Utility Box Art Submission *(small or large box)*

DARK NIGHT





# Utility Box Art Submission *(small box)*

## FLY FISHING FLIES





# Utility Box Art Submission *(small or large box)*

## SENSE OF PLACE

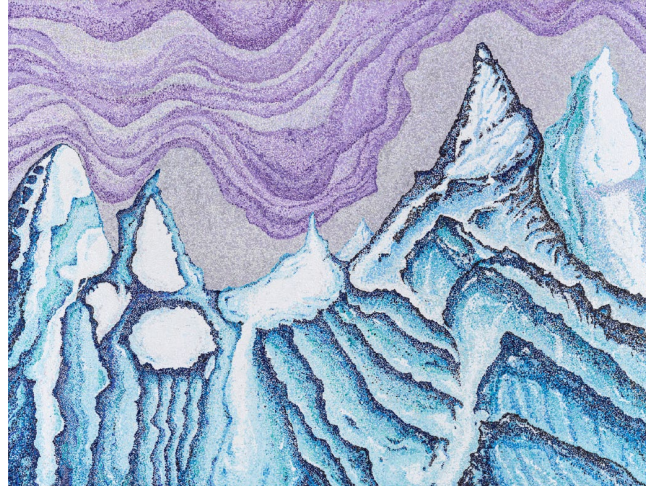
Side 1



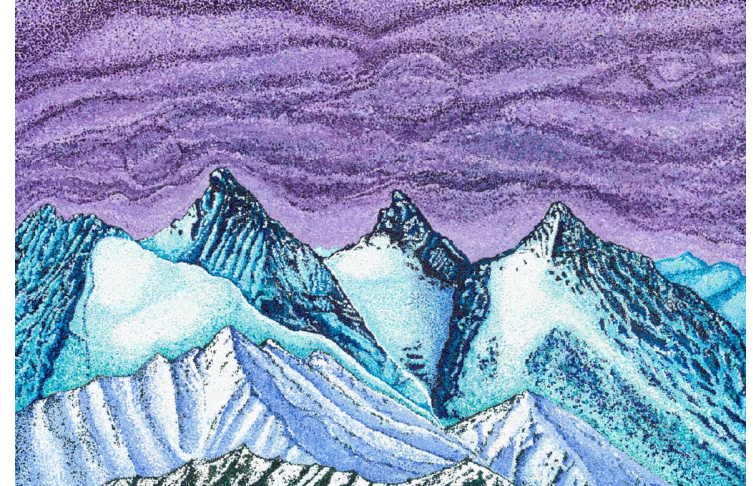
Side 2



Side 3



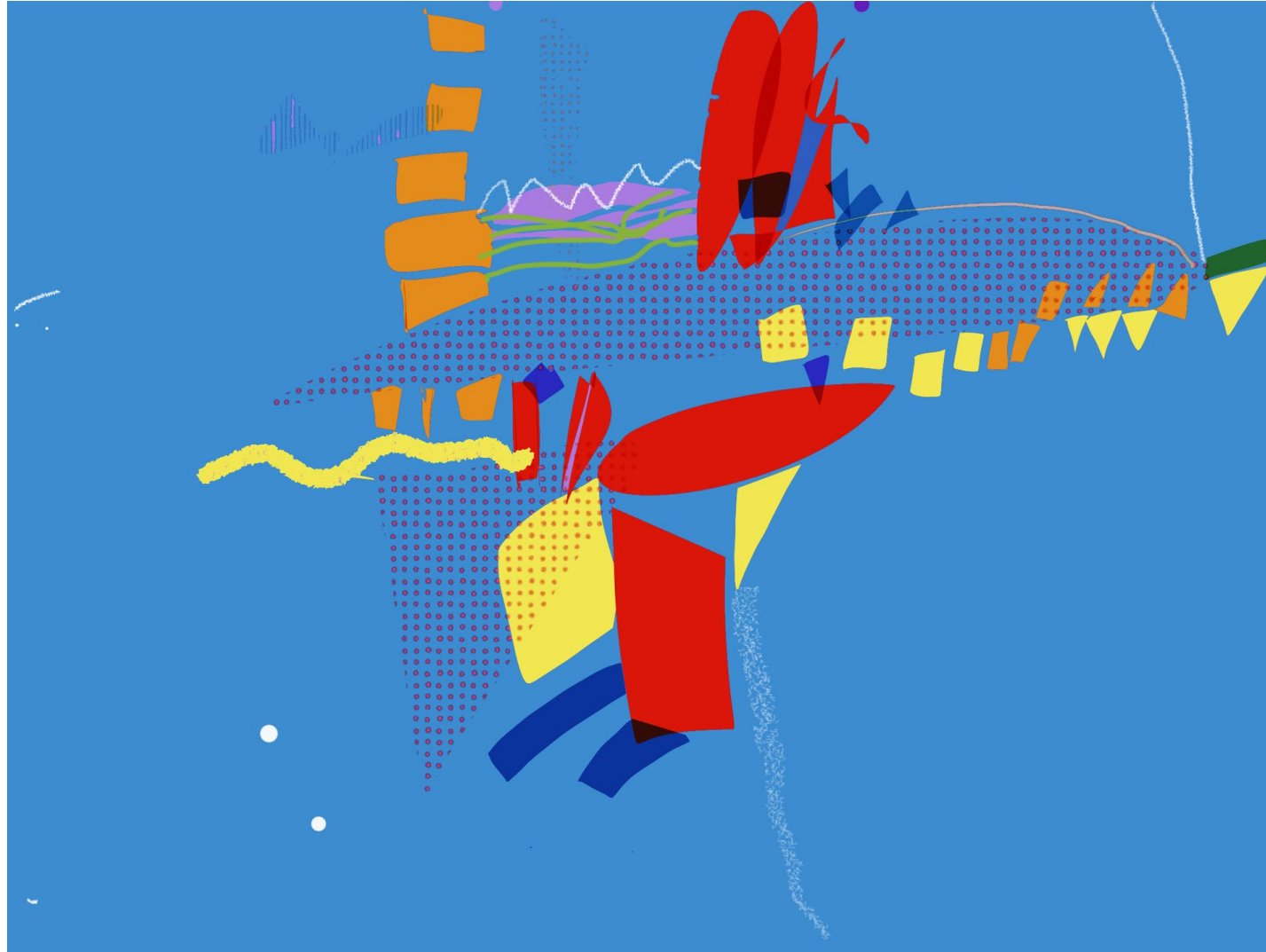
Side 4





# Utility Box Art Submission *(small or large box)*

BLUE SKY





# Utility Box Art Submission *(small box)*

WAGON DAYS BE GONE





# Discussion