

ARTIST A

“Sweet Mama” - Oil on Canvas; 20” x 20”



“Den Mother” - Oil on Canvas; 24” x 24”



“Memories of a Redfish Afternoon” - Oil on Canvas; 40” x 30”

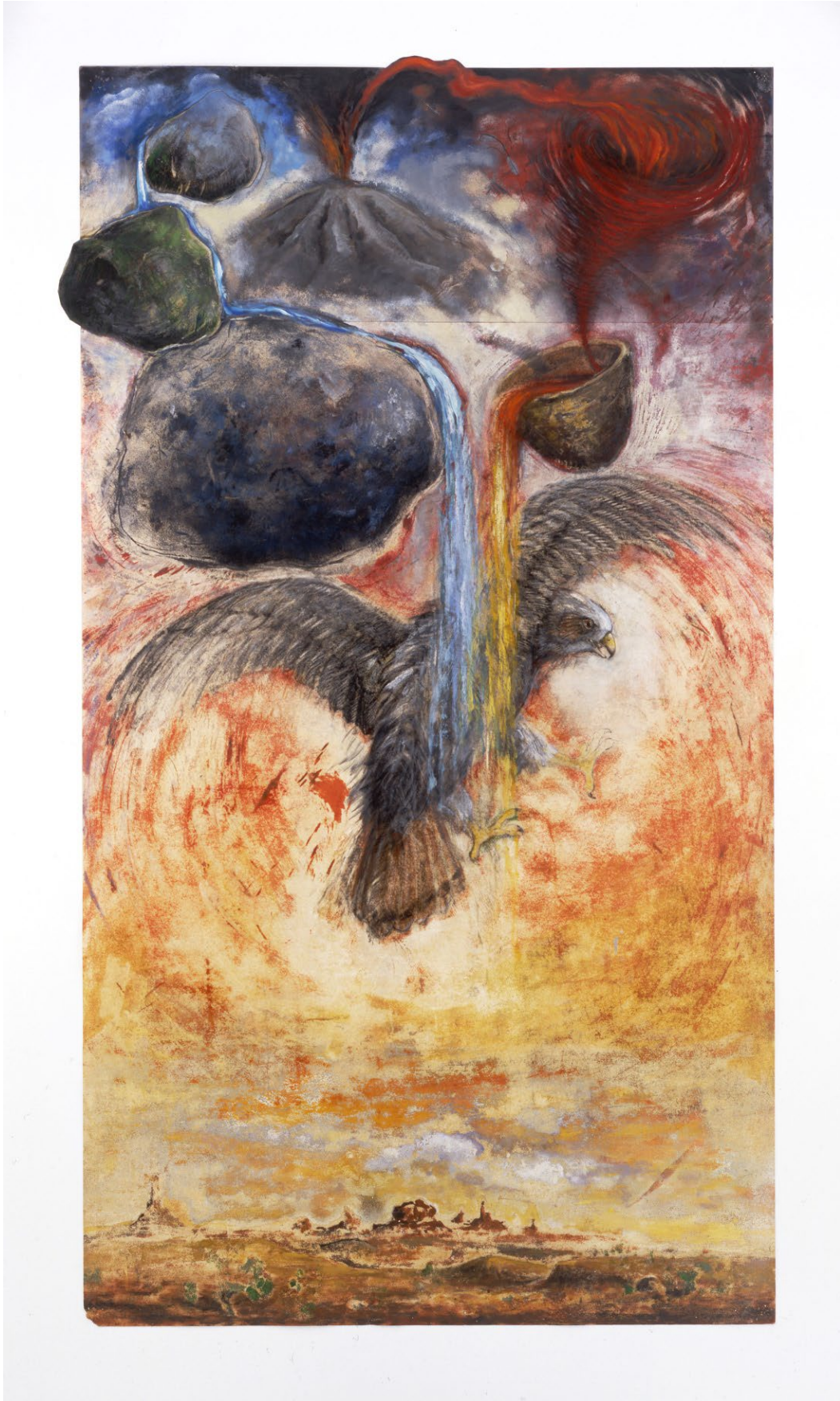


“Elephant’s Perch” - Oil on Canvas; 40” x 30”



ARTIST B

“Stirred up” - Oil enamel, charcoal, lithography crayon, shellac on paper; 79.5” x 46.5”



ARTIST C

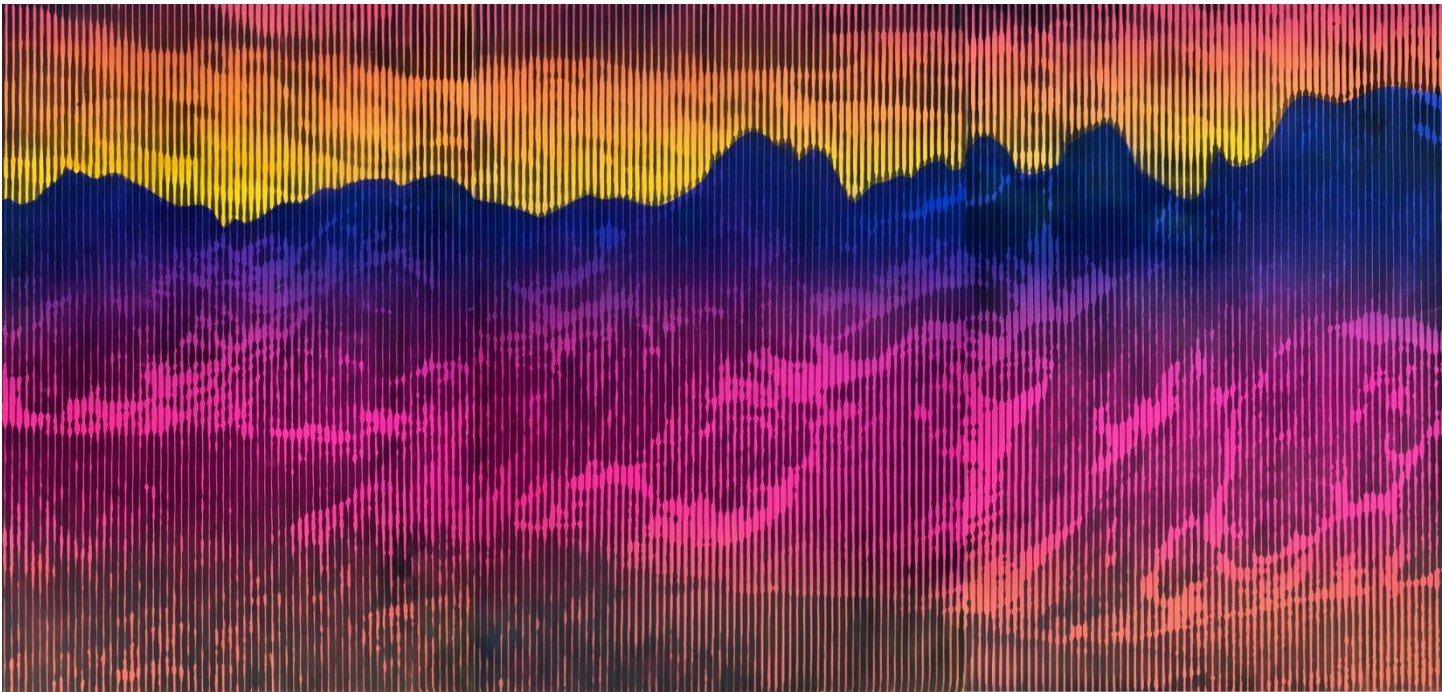
"Bull Elk" - Spray paint on panel with resin; 50" x 40"



“Wagon Train” - Hand Cut Paper; 39” x 49”



“The Sawtooths” - Spray Paint on Headboard panels (black and white or in color); 44” x 90”



ARTIST D

“Devil’s Bedstead” - Oil on Canvas; 18” x 54”



ARTIST E

“Silver Creek Views” - Oil on Canvas; 40” x 50”



ARTIST F

“Sawtooth Summer” - Oil on Canvas; 24” x 36”



ARTIST G

“In the Shadows” - Oil on Canvas; 36” x 36”



ARTIST H

“Trail Creek Ponds” - Archival pigmented photograph on canvas; 30” x 70”



ARTIST I

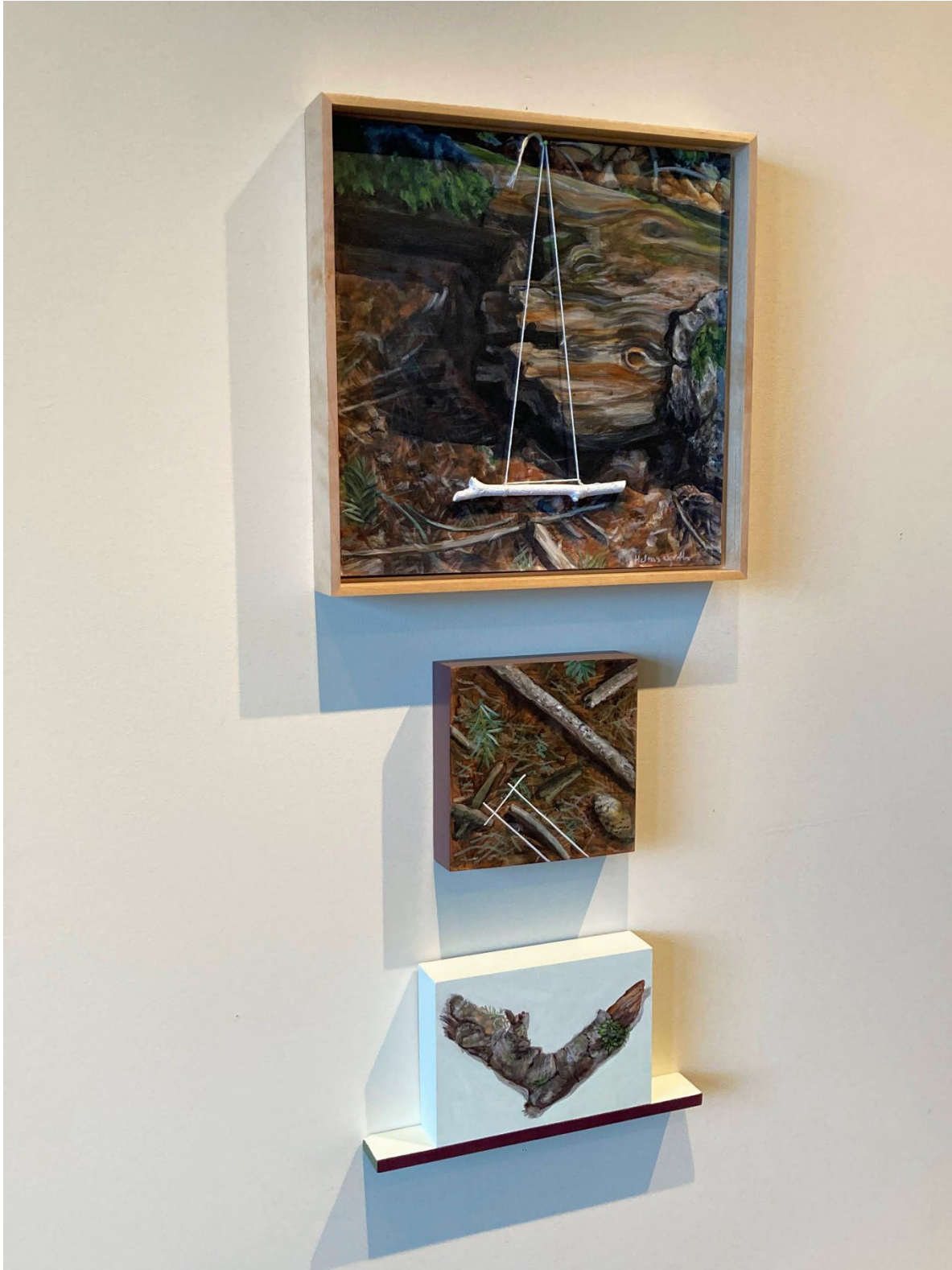
“Black Branch, pale pink with berries”

Acrylic paint on panels, glass headed pins, embroidered floss; 12” x 12”



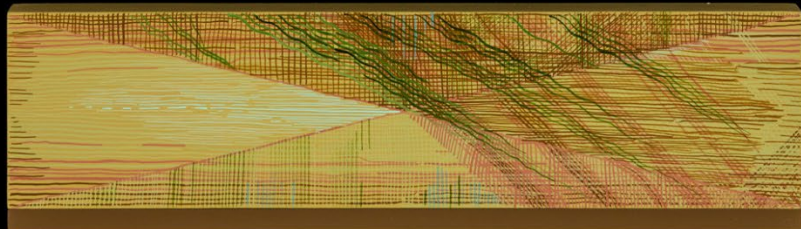
“Dry Branch with Twig”

Acrylic paint on panel, twig, embroidered floss



“CrossSticks and Ripples”

Acrylic paint on panel, wood pieces; 45”(H) x “25”(W) x 2”(D)



“Steppingstones Finding Ways to Cross”

Acrylic paint on panels, wood pieces; 41”(H) x 25”(W) x 2”(D)



“Seeking Clarity”

Acrylic painting on panel, magnet; 24” x 24”



ARTIST J

“Connecting Biodiversity with Inclusion” - Framed Canvas Print; 70” x 34”



“Construction of Stairs of Equality, Equity, and Inclusion” - Framed Canvas Print; 70” x 47”



“Environmental Quixotism” - Framed canvas print; 72” x 43”



“Life Under the Water” - Framed canvas print; 70” x 44”

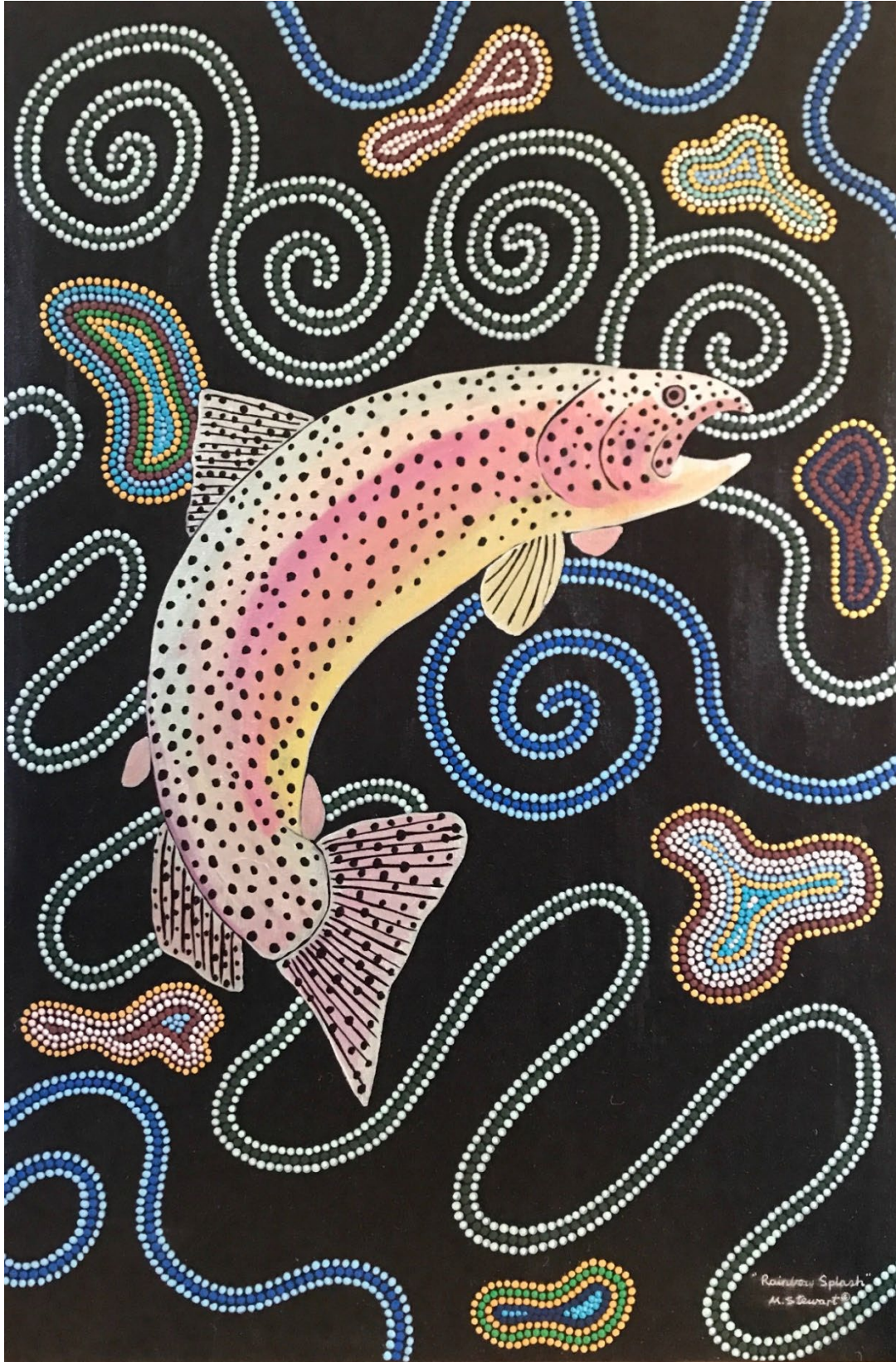


“Natural Biodiversity of Ketchum, Idaho” - Framed canvas print; 70” x 44”

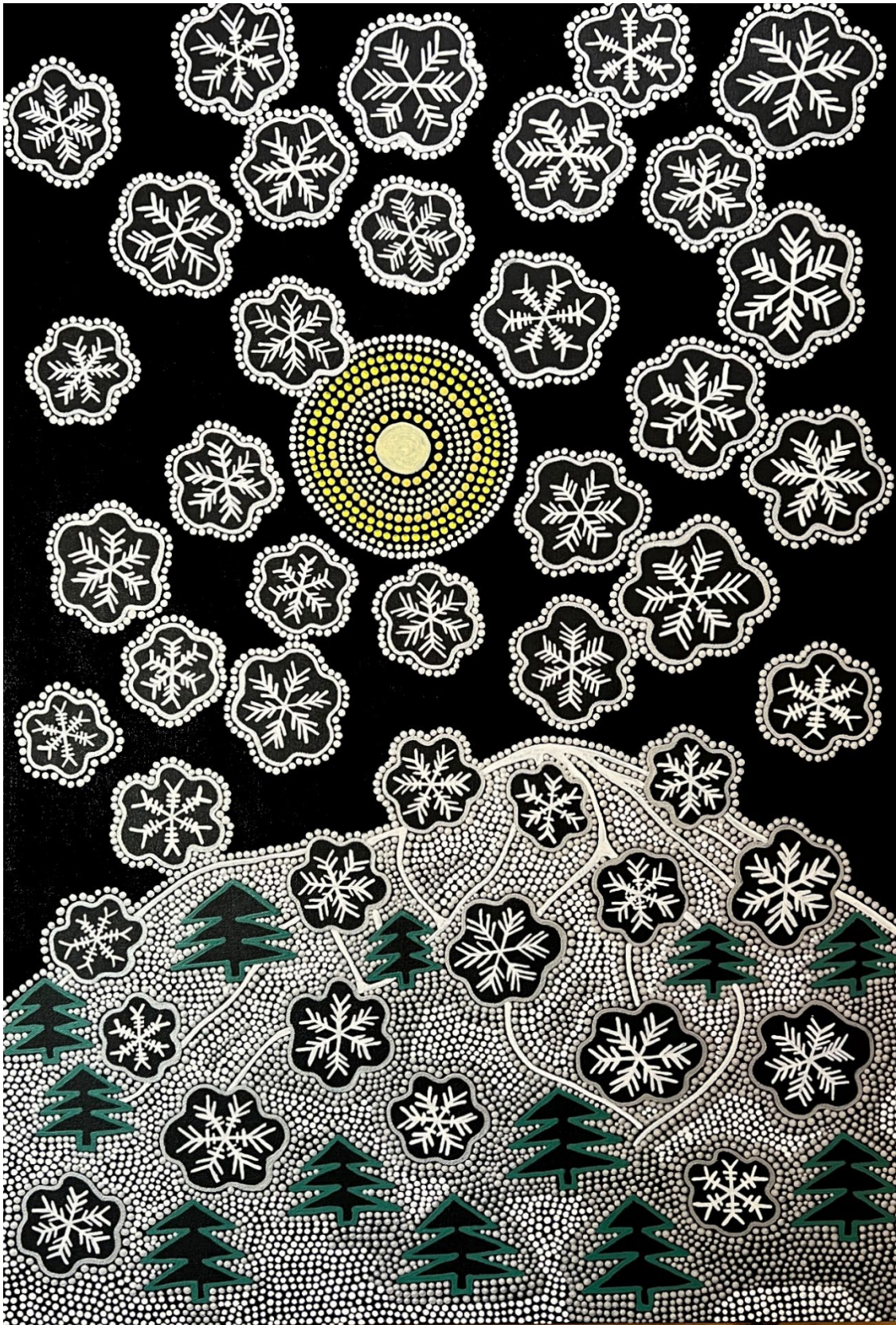


ARTIST K

“Fish Splash” - Acrylic; 2' x 3' x 1/2”



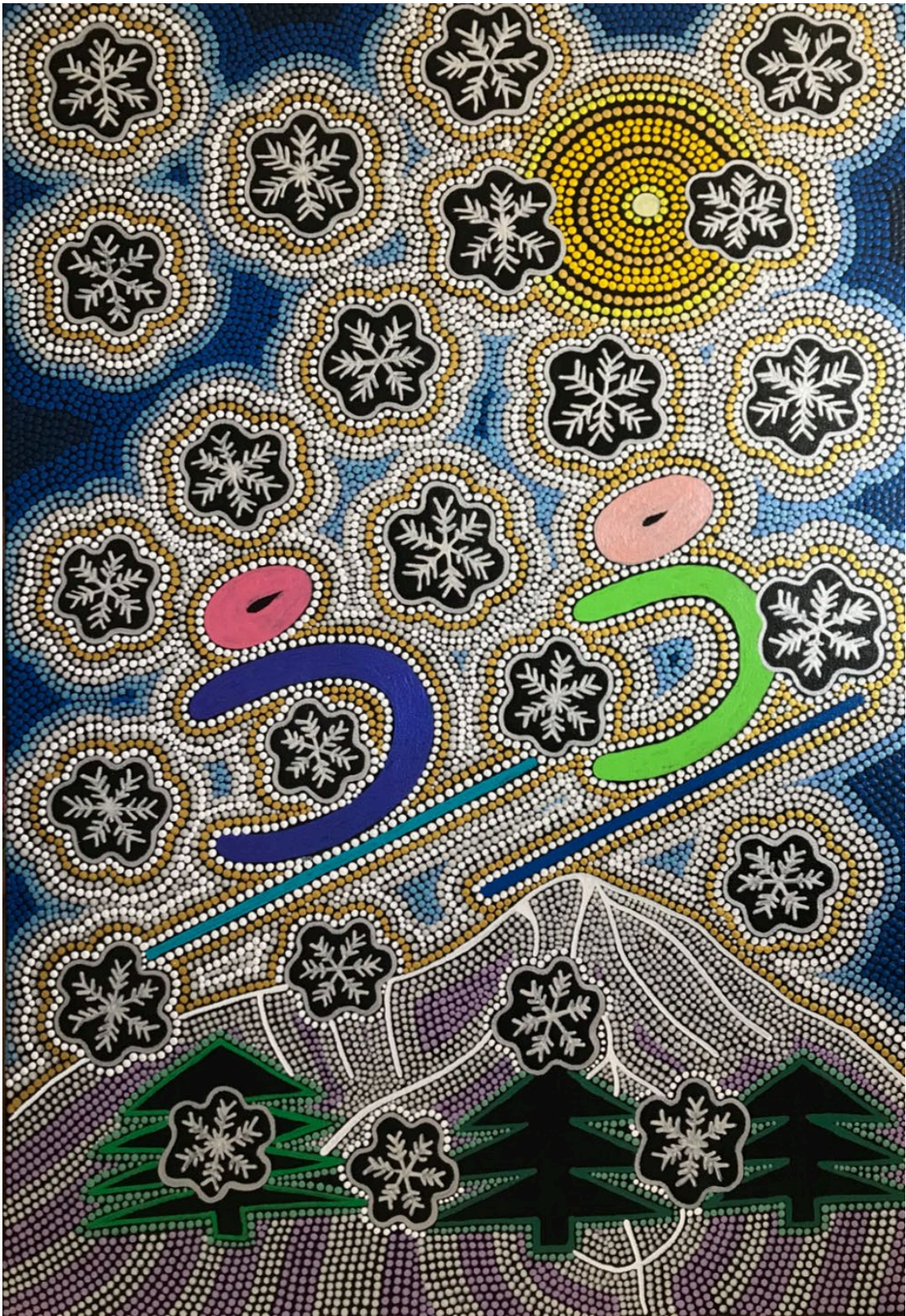
“SnowFlakes – Baldy” - Acrylic; 2' x 3' x 1/2”



“Baldy Ski Day” - Acrylic; 20” x 16” x 1/2”



“Baldy Ski Pals” - Acrylic; 3' x 2' x 1/2”



“Baldy Skiers – Solstice” - Acrylic; 2' x 4' x 1/2”



ARTIST L

“Citrus and Starlight” - Acrylic Wood; 2.5’ diameter



“Fistful of Figs”

Acrylic, Wood, Eucalyptus Branch; .75' x 1.5'



“Momento” - Acrylic, Wood, Eucalyptus Branch; 1.5' x 1.5'



“Spring Ikebana” - Acrylic, Wood, Cherry Branch, Sweetgum Branch



“Watched You Dreaming” - Acrylic, Wood; 4' x 2'



ARTIST M

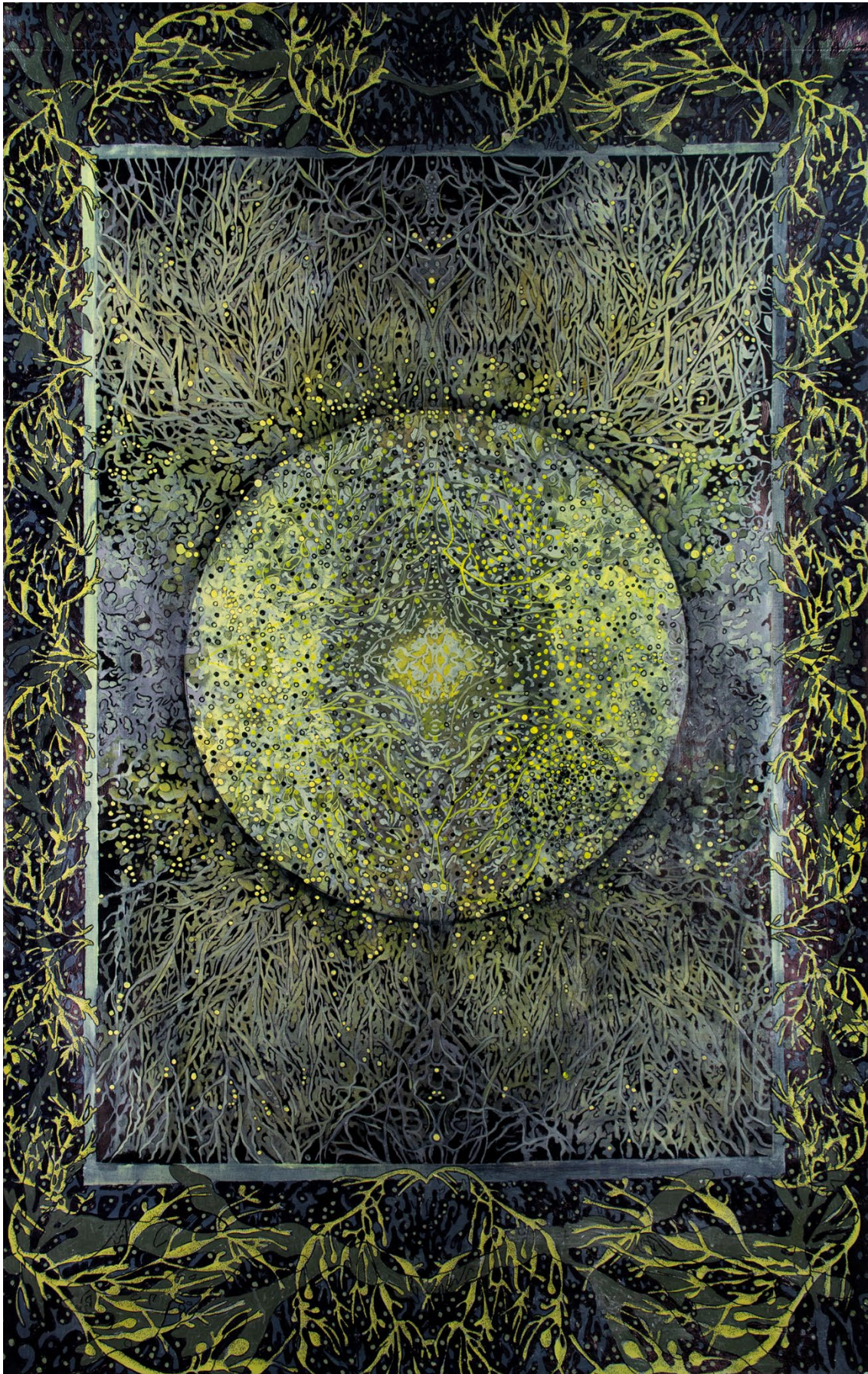
“Acetabularia” - Oil and Ink on canvas (hangs as a tapestry); 5’ x 3’



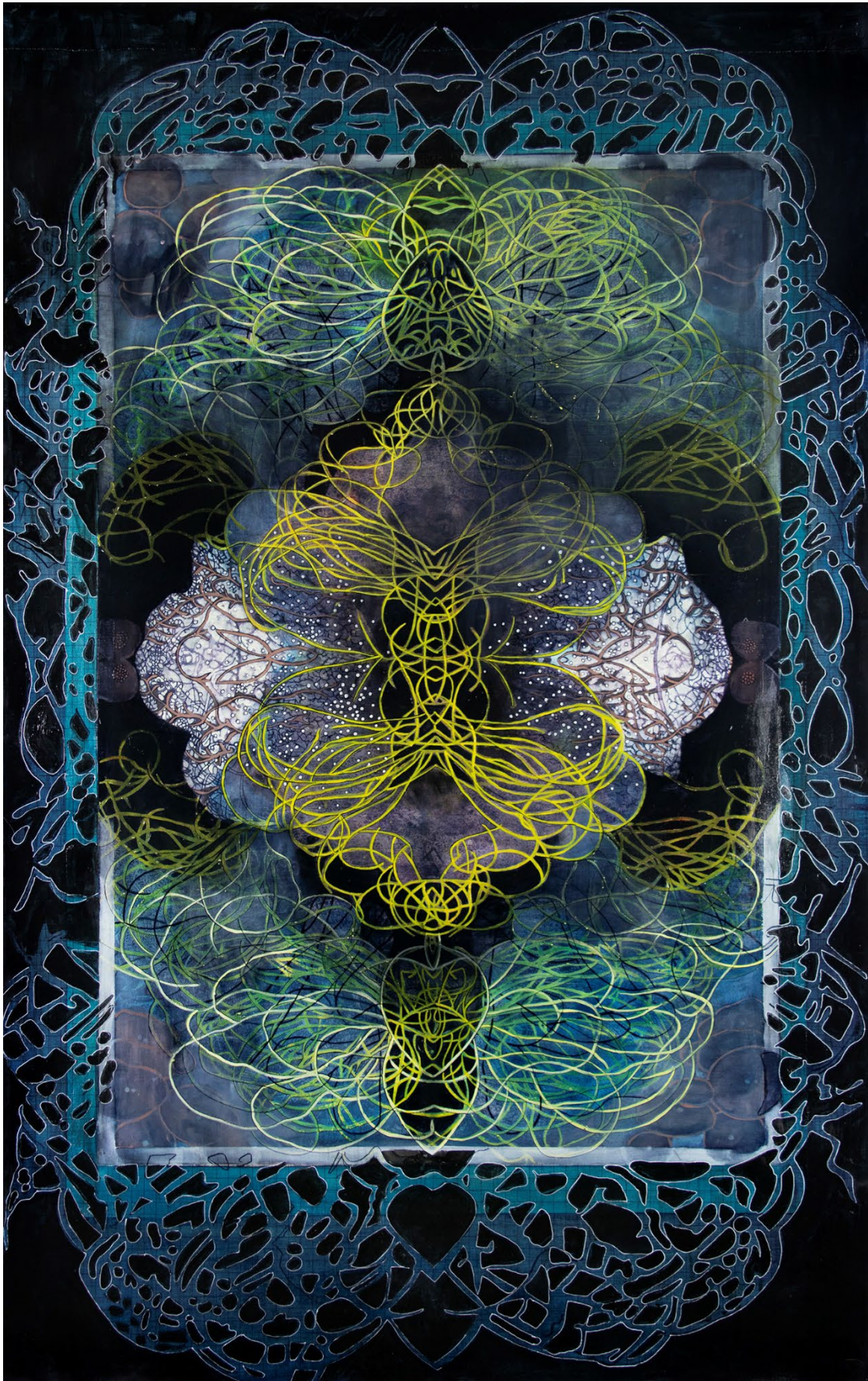
“Red Algae” - Oil and Ink on canvas (hangs as a tapestry); 5' x 3'



“Rockweed” - Oil and Ink on canvas (hangs as a tapestry); 5' x 3'



“Thongweed” - Oil and Ink on canvas (hangs as a tapestry); 5' x 3'



“Green Algae” - Oil and Ink on canvas (hangs as a tapestry); 5’ x 3’

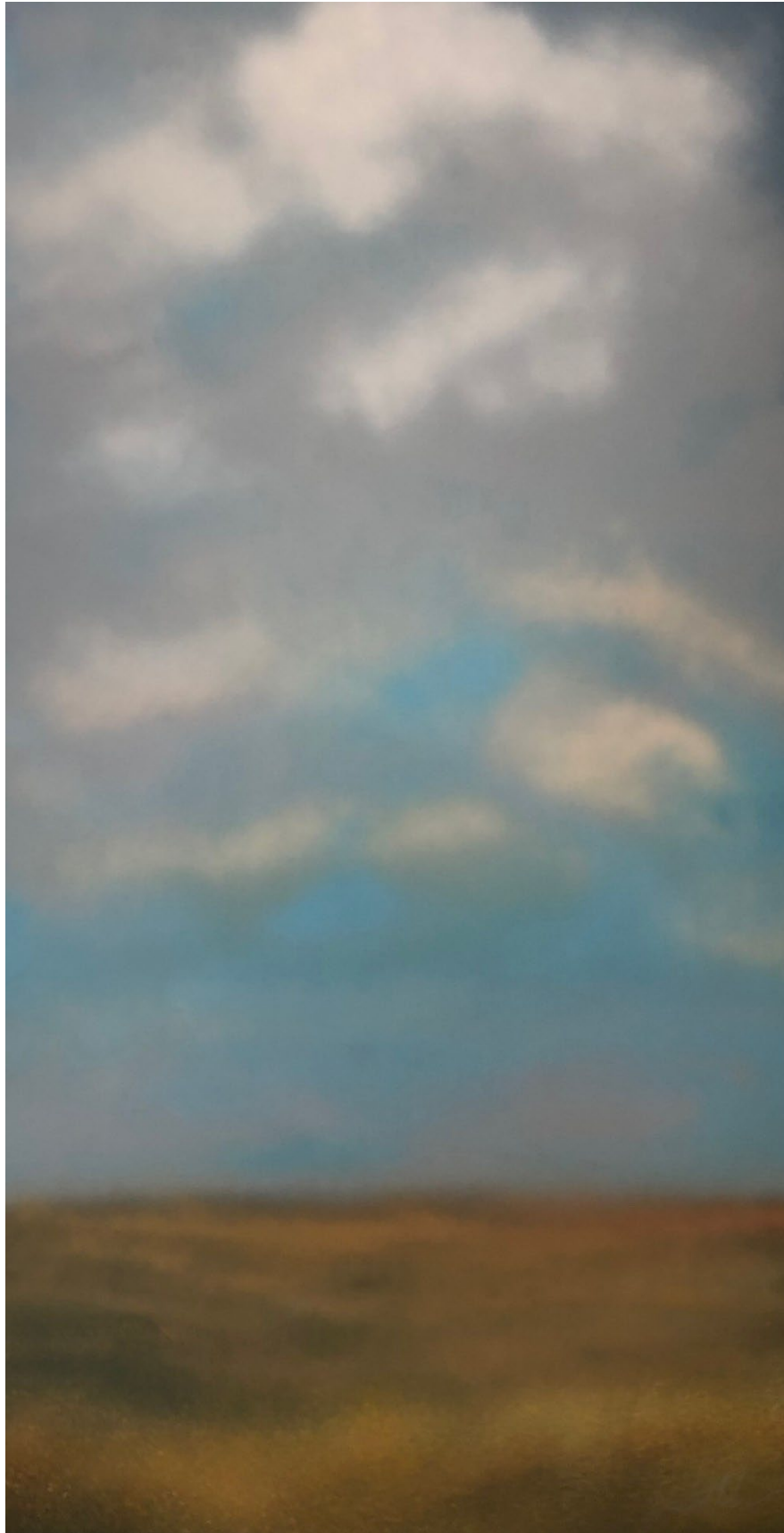


ARTIST N

“Celestial Rendezvous” - Spray Paint on Art Board; 24” x 24”



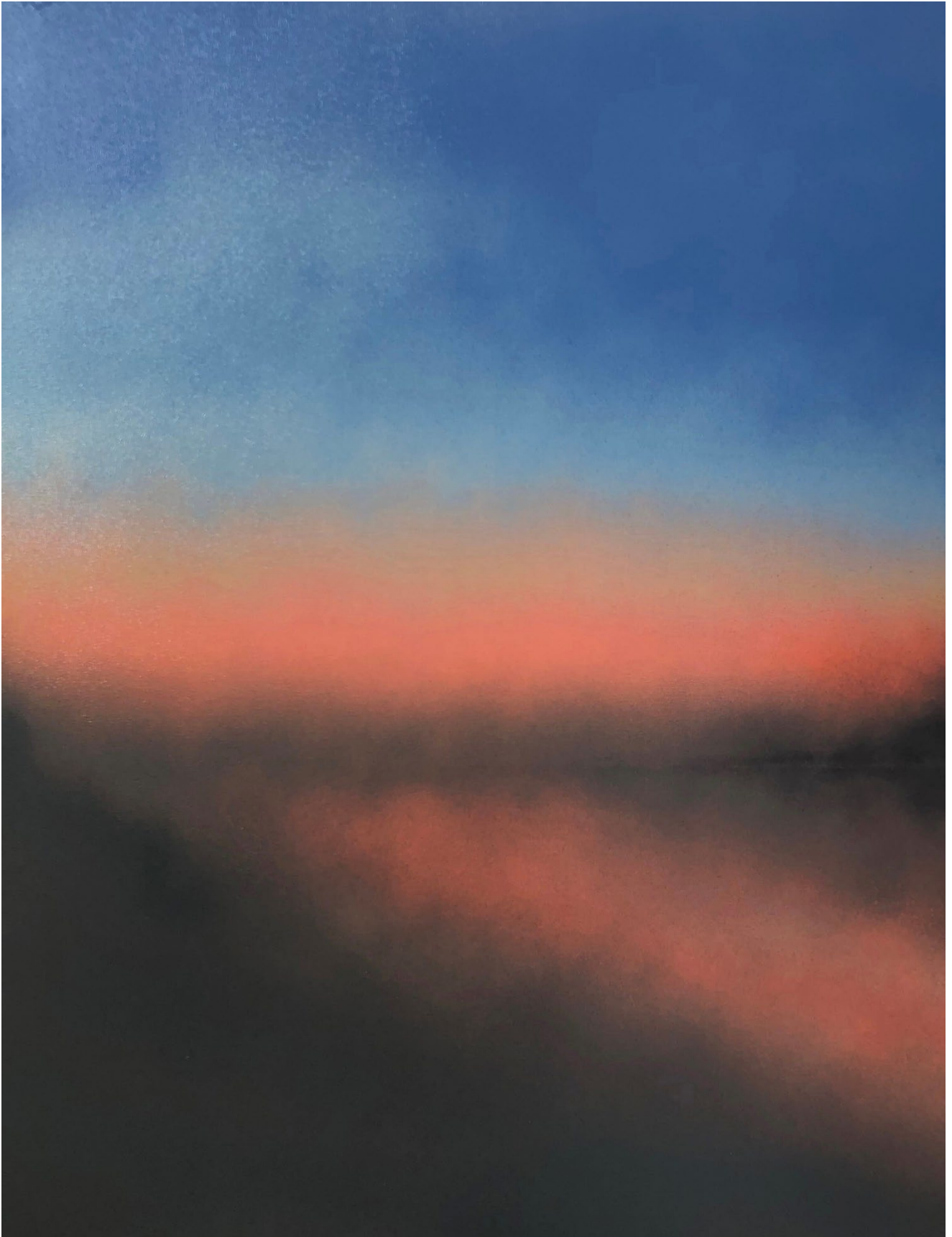
“Sky Drama” - Spray Paint on Wood Substrate; 24” x 75”



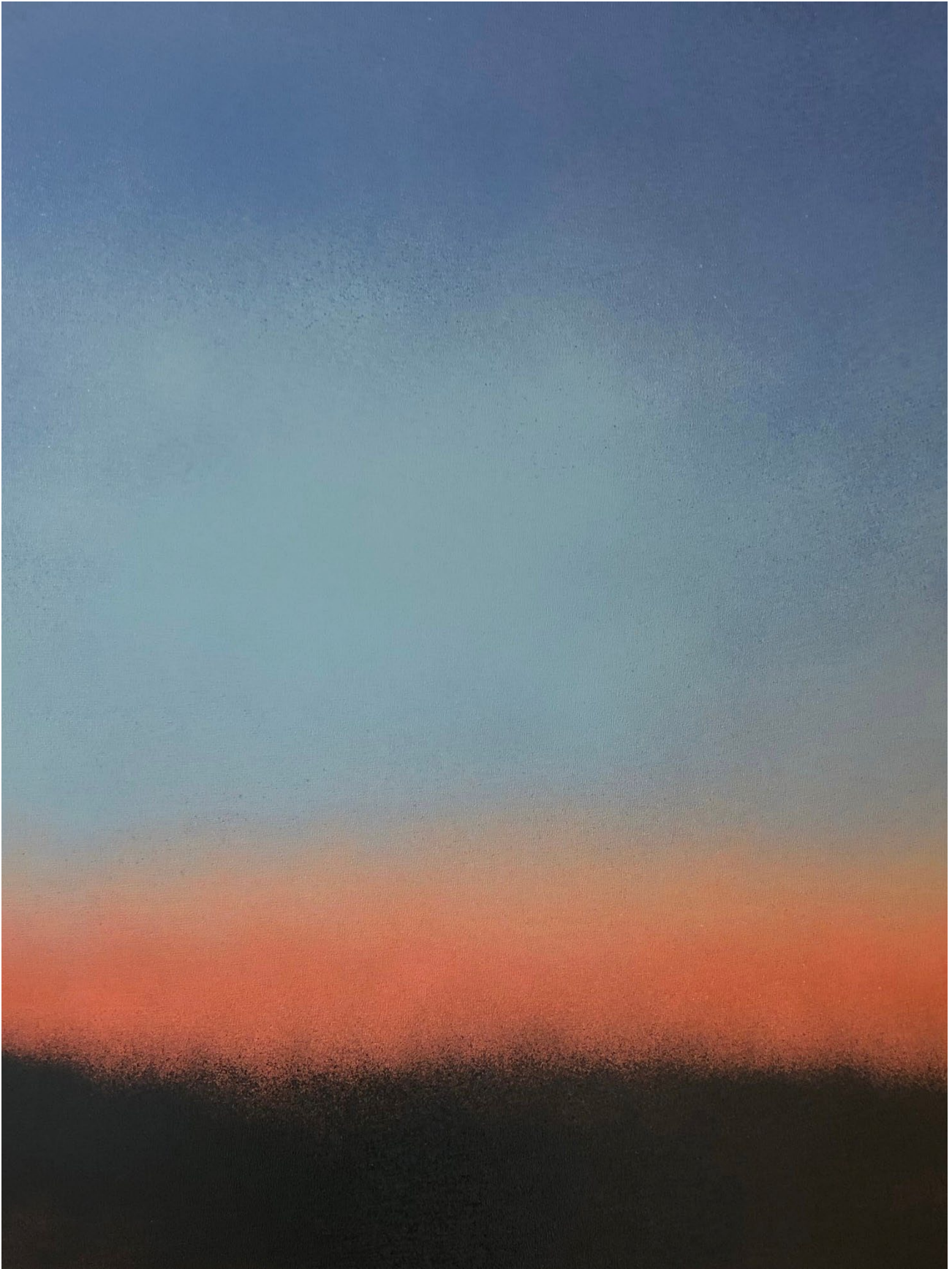
“Wind Song” - Spray Paint on Art Board; 30” x 24”



“Calm Waters” - Spray Paint on Canvas, framed; 18” x 24”



“Blushing Sky” - Spray Paint on Canvas, framed; 18” x 24”



ARTIST O

“Silver Creek” - Pastel; 30” x36”



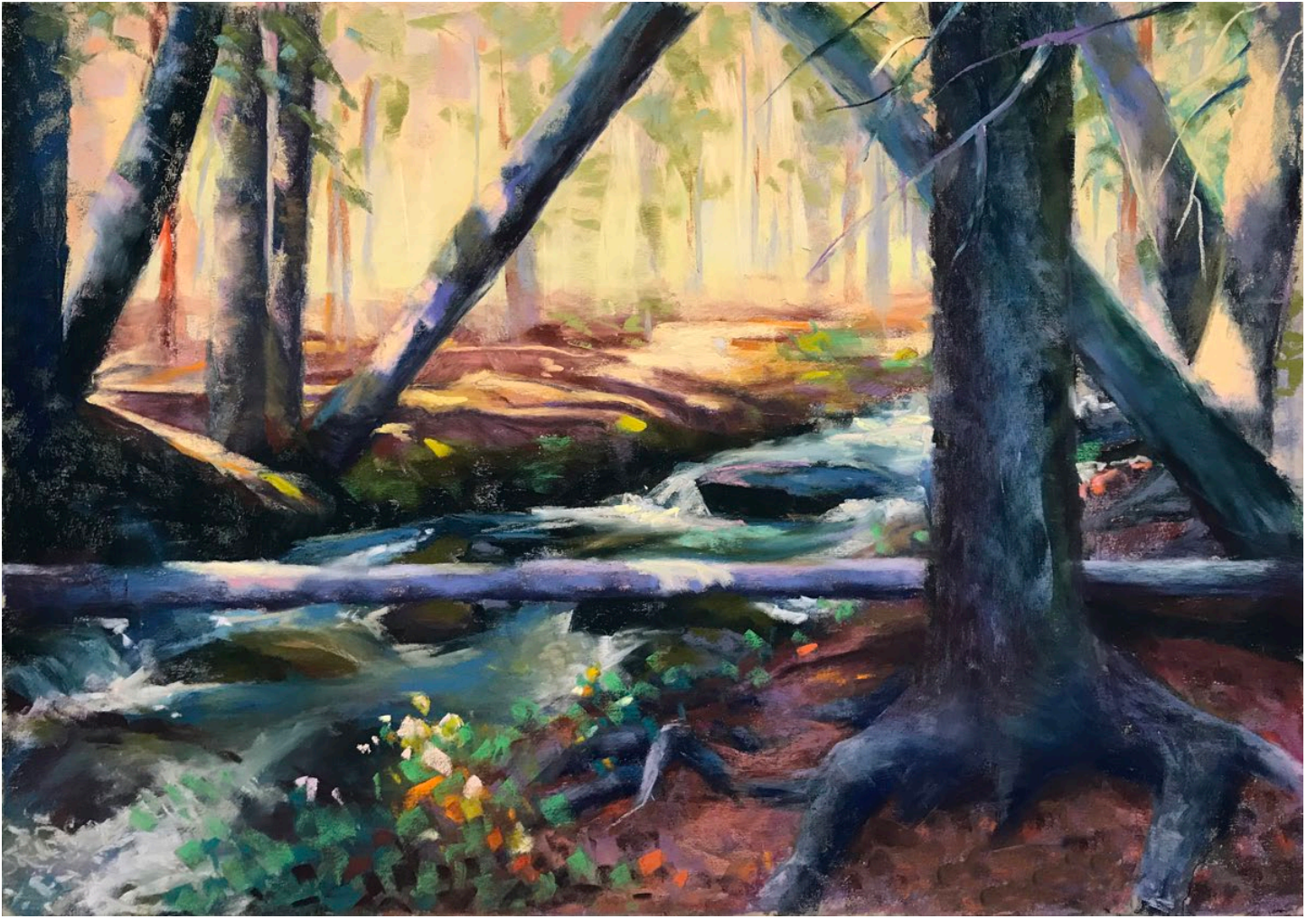
“Snake River Reflections” - Pastel; 27” x 33”



“Standing Tall” - Pastel; 17.5” x 20.5”



“Geometree” - Pastel; 22.5” x 28”



“Wherever it Ends” - Pastel; 20.5 x 17.5



ARTIST P

“Landscape Monotype 1” - Monotype; 24“ x 36”



“Landscape Monotype 2” - Monotype; 24” x 36”



“Lake Monotype” - Monotype; 36” x 24”



“Textile 1” - Monotype; 24” x 36”



“Textile 3” - Monotype; 24” x 36”



ARTIST Q

“Pole Creek Autumn” - Oil on Canvas; 14” x 18”



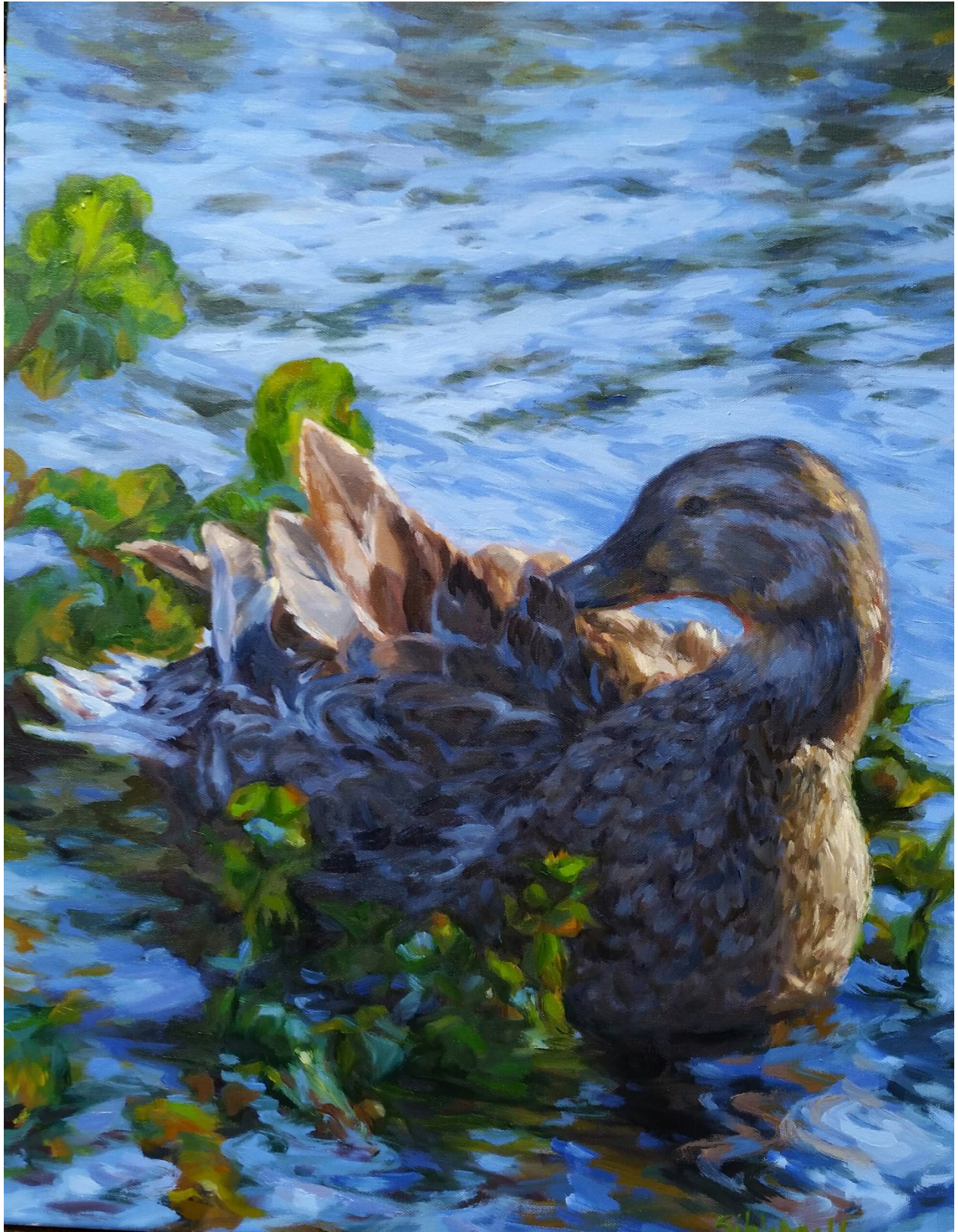
“Life is but a Stream” - Oil on Canvas; 16” x 24”



“Cougar Creek” - Oil on Canvas; 23” x 30”



“River Life” - Oil on Canvas; 26” x 20”



“The Promise” - Oil on Canvas; 21” x 21”



ARTIST R

Paper; 8.5" x 11"

[yei ozomatli hueytozoztli nahui tecpatl]
.:.
iris
teal
white
screen
invisible
disappears
ther time: sun
flashes of ano-
san-sun. Tulum
ded in ether airs/Ku-
clipse: *Itzamna*/suspen-
Serrated eyes/memory e-
light in the iris/Lakota songs.
material roads in the skies/blue
can't. Rainstorms in the isles/im-
So the poetic voice sheathes what you
tochtli feel words –you can't see/shadows.
zumel. Like suns glare in the tonalpohualli -13
heart beam. Tilt axis @ 30 degrees face north Co-
feathers camouflaged into rainbows/accelerate pulse
ch shell and the pyramid/edged in the mind stream. Macaw
cenotes/whirlpools in the crystalline might. Go back to the con-
shrill. So the 1st hero twin *Xbalanque* @ sundown burnt skies in the
field & the hologram bright. Feel ghost in the bones/orographic winds
melanin darkens after rain. What can I do was borne with this burgundy
shapeshift nexhuitzilin –a chill in the carbon 14 frame. DNA shards skin tone/
flight/waves in Iztapa Cihuatanejo. Invisible lightning how thoughts outlast time/
cortex/I cut stars collide: *los abuelos cicatrizados en la venas*. Spirits in hummingbirds
So one's bleeding this light/dark winds telluric currents you cant see. Scars in the visual

Transparent thoughts in the poolside eclipse that's hard you see. When there's a langu
 Age—but no one to speak it too *Nahuatlacah/Purepecha* huchari uri picua—por nuestra
 Fuerza. Carry over sight how languages bleed in yellow spider suspended animation
 Adamantine steel. It's the child in me to breathe these images into 3 dimensions iris
 Glare: 17th cycle guards *chicome acatl tititl nahui tecpatl*! It's the period of repose.
 Tlacahuexolotl it's the fluidness transparency how these words were shard into/
 Betwixt visual cortex. Ixquimilli the dark eyed scribe hollowed cenotes carving
 Tezcatlipoca—read in the periphery 1519 *la noche triste* pyramid glyphs bleed
 Within: this aint an erased *camara oscura* you can read behind these words
 Isles. Desert sands inscribed in the DNA marred ethics shard jagged flint.
 Tears encoded in a topography scarred with an unbalanced cross/double
 Heix 3 stripes on the right temple tear drops of the jaguar how silence
 Weighs. Heyokah thunder dreamers breathed into the bloodstream.
 Eagle feathers breeze the melanin darkens blue lightning
 Inipi/sweatlodge ceremony—spirits awaken the memory I
 Jade/glass. Slowly time engulfs stream of consciousness:
 2 braids in the above count read's seven reed period
 Seclusion four silex. *Tarasco te está lloviendo la*
Memoria and so it's like breathing in multiple dimensions.
 Suns refract rainbows kaleidoscope casts stars.

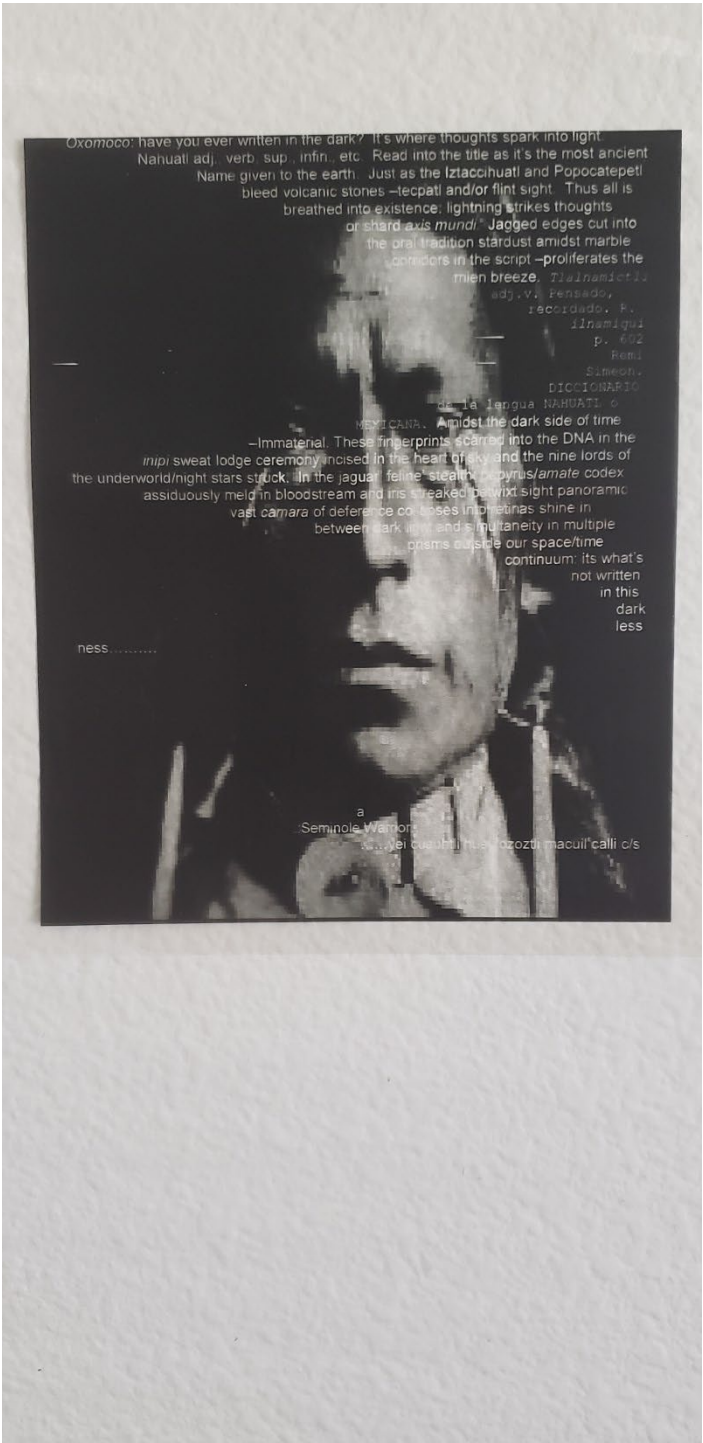
Lobo Xocoyotzin there are transparencies
 the minds I. Windstorm's lexicon of brown
 —white lightning how words immaterial lace-
 rations in time. Step back and you will see a
 pyramid shift in the s[pace]/time continuum a
 ccelerate—when you palm your hands.

Organic poets cut deep in the spiritessence:
desplazamiento lateral es lo que
ves. Owls refract jade screens n
 pitch dark forest white/ochre
 shades of ceremonies embed
 ded in winters frosts. Petroglyph
 origins of the carbon—14fram3s:
 dreams serrated from orography

& winds fissures/I.
 It's a soliloquy that
 u are reading stone
 words cut under-
 world corridors in
Tonina. Besides u
 see invisible jaguar
 open
 :scrolls:.

warrior:

Chicuey Ocelotl Tititl Nahui Tecpatl



Oxomoco: have you ever written in the dark? It's where thoughts spark into light.
Nahuatl adj, verb, sup, infin, etc. Read into the title as it's the most ancient
Name given to the earth. Just as the Iztacchuatl and Popocatepetl
bleed volcanic stones -tecpatl and/or flint sight. Thus all is
breathed into existence; lightning strikes thoughts
or shard-axis mundi. Jagged edges cut into
the oral tradition stardust amidst marble
conifers in the script -proliferates the
mien breeze. Tlalnamictli

adj. V. Pensado,
recordado. N.
tlalnamictli
p. 602
Rema
Simeon
DICCIONARIO

de la lengua NAOHATI o
MEXICANA. Amidst the dark side of time

-Immaterial. These fingerprints scarred into the DNA in the
inipi sweat lodge ceremony incised in the heart of sky and the nine lords of
the underworld/night stars struck. In the jaguar feline stealth cyrus/amate codex
assiduously meld in bloodstream and iris streaked bewixt sight panoramic
vast camera of deference collapses in retinas shine in
between dark time and simultaneity in multiple
poems outside our space/time

continuum: its what's
not written
in this
dark
less

ness

a
Seminole Warrior
x...yei cuabli h...sozotl macuil'calli c/s

desert sands in the titles namesake:
en estas temporadas se recuerdan a
los ancianos: in this cycle we remember.

Un deciphered

Micailhuittl
or
Hueymicailhuittl

Ceremonies for the

dead:
Elders can see
lightning in minds
glare to hold sharp
obsidian stones I.

Bleed into the past

or
Calendars omnipresence:

Tonalpohualli shard

eyes:
In the 9th Xiuhpohualli
Mictlan flowers into our
memories: duality in the
place of quietude and re
pose –how concrete poets.

Live in other realms

or
Temple staircases appear:

Uxmal

breathes:
DNA of ancients caught
in the memories glare I
light with words are a
fixed as seconds seep
towards solar flares in.

Between thoughts

or
peasants in the fields
sunlight

sheathes:
Melanin so bright shines
earth tones scarred into
eyes shimmer sight to
outlast harvest of colors.
Sinaloa te traigo en el
corazón de obsidiana.
Silex

Chicome Miquiztli Xocotl Huetzi Yei Acatl

Lightning in the Blood

1
lo
ok
into
the sym
metry of l.:
spider's/web's.
Got you: dreams
flow cutting edge
moon. Bear constel
-lation/tlahuizcalpante
-cutli/el señor de la aurora.
The trace serrate across crab
nebula super nova to the equi
-librium in the DNA & the 405 e
-lements and spirits. Outside spa
-ce/time continuum like suns shine
inside voices shard from sunstone
calendars ebb and glow in the mind
stream. Words cut/I bleed this slow
-ly moments seep away and the hour
glass turn to stone/pyramid shifts acce
-lerate. In the memories glare Uxmal 7
temples lost in space/step forward a cym
-bal engraved by Shield Jaguar in Yaxchilan. 2
eyes sheer words from another time lapse pho
tographic in Balamcan: there are 365 steps and
a serpentine light down the staircase in the solstice.
Quetzalcoatl' metamorphoses into Tezcatlipoca' sight
or thoughts struck from the jade immaterial ether built
on perception multisensory: its chicnahui quiahuitl tititl yei
acatl or 9 rain gathering 3 reed in the Tonalpohualli carry it
with in these words fractured visual resonance invisible/I or
thoughts lacerate time. Crossover meridians of light like peach
blossoms spring in winter snows. Tlatoani Cuauhtemoczin holo
-gram here inscribed that is suns crash into rainbows. Like these/I
thought experiments breathed into word -prayers: so the poetic ke
-eps bleeding. In ceremony the silex-soul shard into cloud cover in
the jade iris glare. Language weaved in staleae of memories repose:
tijax in k'iche maya is the glyph for flint knife sharpened obsidian eyes.
Fire as embers splint into light how easily these monarch butterfly-sky
streaked from solar flares and stardust. As moons/suns blink of and I/
white dwarfs aftershock waves into meteor showers give/beam refract in
shaded ideas without time/lapse ideographic screens in concrete langua
-ge. In the multi dimensionality of worlds/lives in these instances as stars
implode gamma rays are lighting these x rays scarred from ancestral DNAI.

ARTIST S

“Fox” - Pen and Ink; 28 ³/₄” w x 31 ⁵/₈”



“Hare” - Pen and Ink; 28 $\frac{3}{4}$ ” x 31 $\frac{5}{8}$ ”



“Great Blue Heron” - Pen and Ink; 28 ³/₄” x 31 ⁵/₈”



“Bee Balm” - Colored Pencil; 16” x 20”



“Yellow-Throated Warbler” - Watercolor; 16 ½” w x 20 ½”

