



The Future of Recreation

Proposed Recreation Levy for Blaine County Recreation District

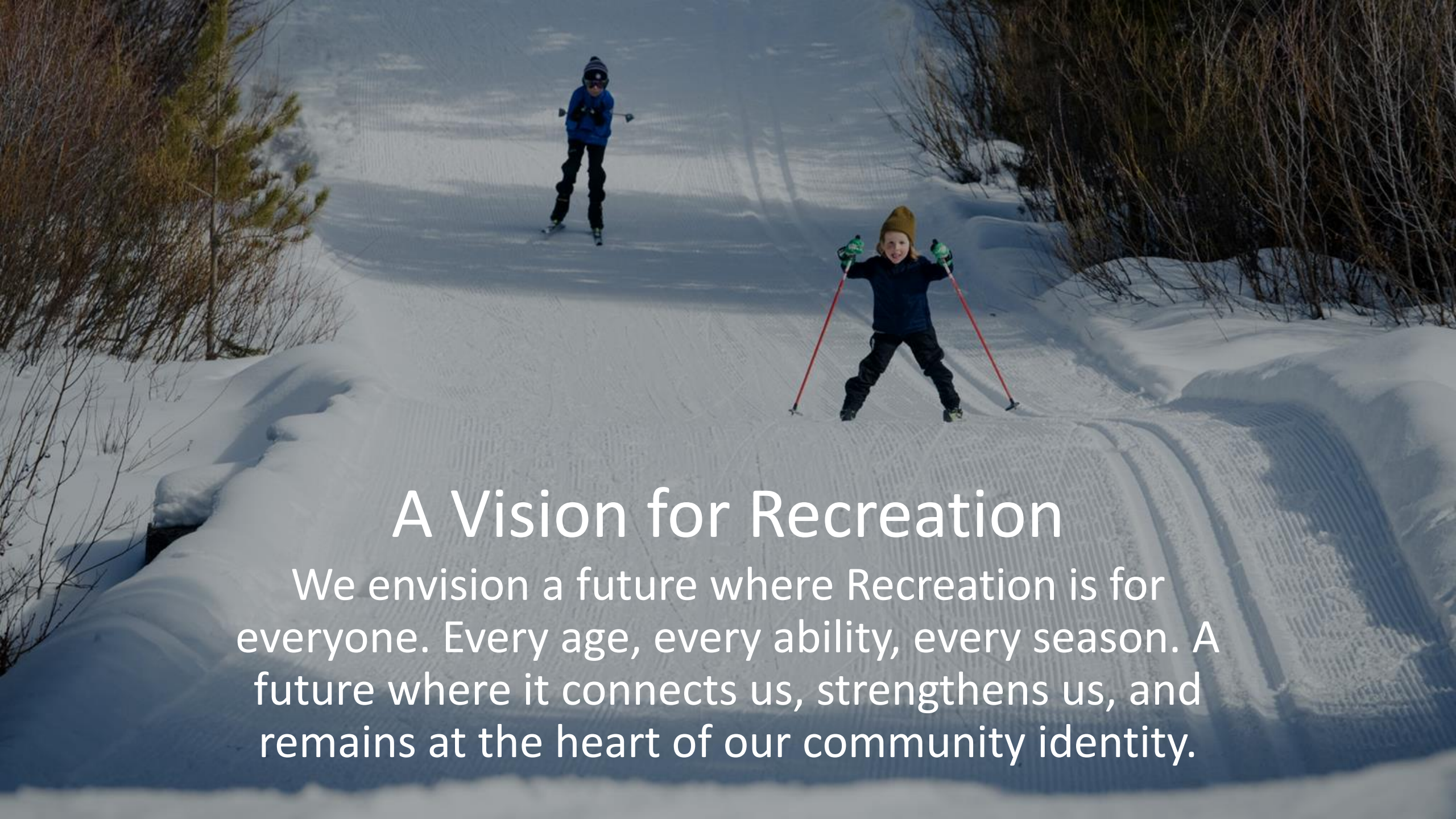


The Challenge

With rising demand and increasing operational costs
BCRD's funding model no longer keep pace.

Listening to the Community





A Vision for Recreation

We envision a future where Recreation is for everyone. Every age, every ability, every season. A future where it connects us, strengthens us, and remains at the heart of our community identity.

A woman with dark hair tied back, wearing a black sleeveless top and blue leggings, is in the foreground, holding a white pickleball paddle and a red ball. She is looking towards the camera with a slight smile. In the background, another person with blonde hair in a blue top is playing pickleball, and a third person in a green shirt is visible further back. The setting is an indoor sports court with a yellow wall and a white net.

Bringing the Vision to Life

Trails

Use & Demand

- World-class trails with 600,000 uses annually for recreation, transportation & community connection

Proposed Changes:

- Improvements for summer and winter trails including: Wood River Trail, Quigley Trails, North Valley Trails, and Galena Trails to connect communities
- Repair and maintain bridges, install restrooms, improve parking areas, upgrade grooming equipment and enhance multi-use spaces.





Galena Lodge

Use & Demand

- World-class recreation site
- Aging structure and preservations needed

Proposed Changes

- Renovate and preserve the historic lodge
- Upgrade supporting infrastructure
- Improve site amenities for year-round use

Quigley Trails Park

Use & Demand

- A community hub for play, exercise, and connection.
- Space where you try something for the first time

Proposed Changes

- Enhance and construct infrastructure supporting multi-use recreation spaces





Aquatics Facilities

Use & Demand

- Keeping the pool safe, welcoming, and open longer for the whole community.

Proposed Changes

- Expand seasonal operations
- Complete long-term maintenance and improve infrastructure

Sports Fields & Infrastructure

Use & Demand

- Access to sports and rec provides demonstrated benefits for children & adults
- Competition for time/access
- 89% Cite need for more rec space

Proposed Changes

- Construction of and improvements to multi-use courts, fields and facilities
- Accommodate various sports and community events year-round



Recreation By The Numbers

BCRD's Current Tax Levy

Annual Cost per \$100,000 of Assessed Home Value	\$8
--	-----

Annual Cost to Median Homeowner	\$60
---------------------------------	------

Proposed Permanent Override Levy

Annual Cost per \$100,000 of Assessed Home Value	\$13
--	------

Annual Cost to Median Homeowner	\$97
---------------------------------	------

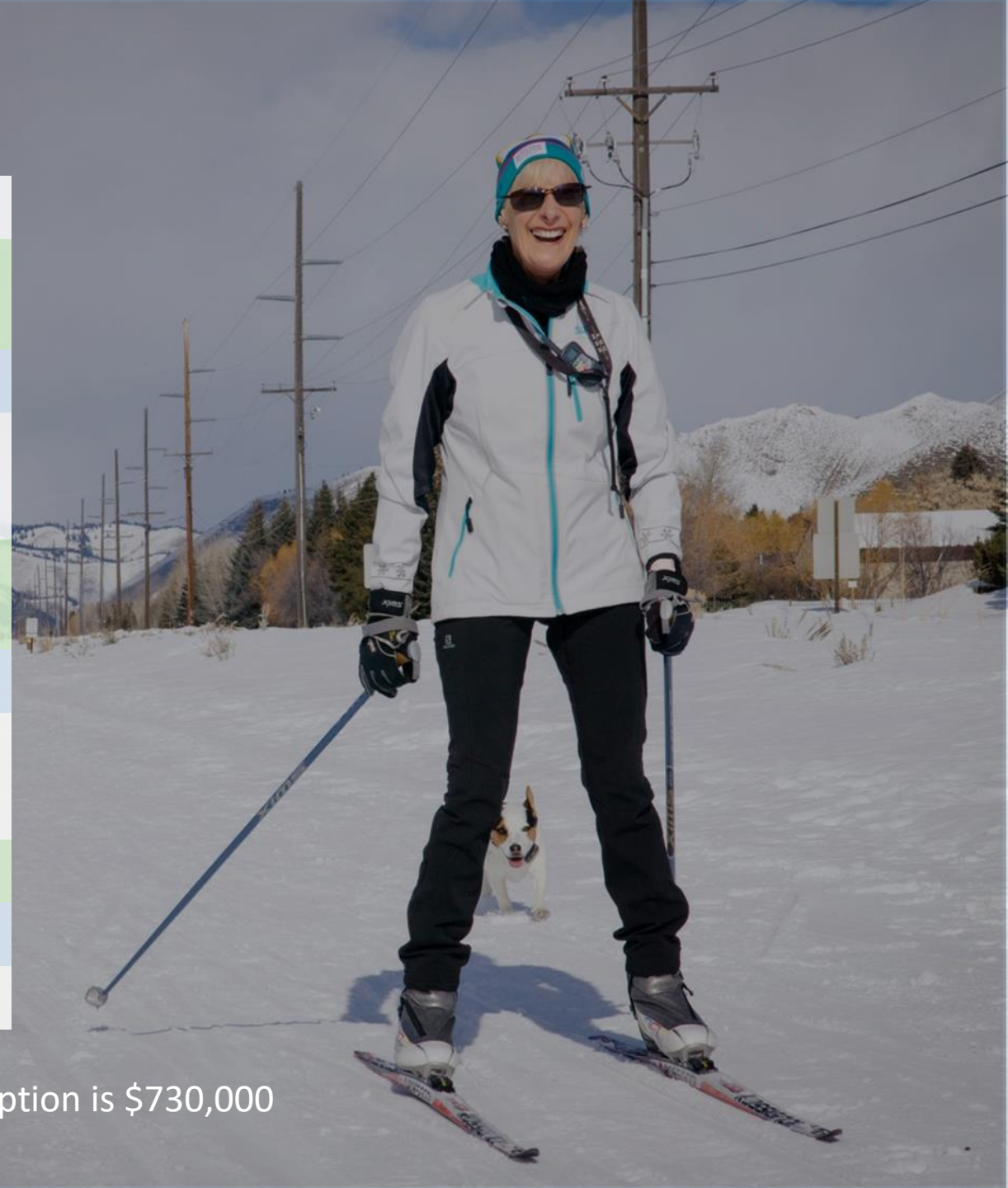
Total Proposed and Current Levy

Total Cost per \$100,000 of Assessed Home Value	\$21
---	------

Total Annual Cost to Median Homeowner	\$157
---------------------------------------	-------

*All Figures Rounded

Median home value in Blaine County with a homeowners' exemption is \$730,000



Planning for the Future





What Happens Next



Thank You

