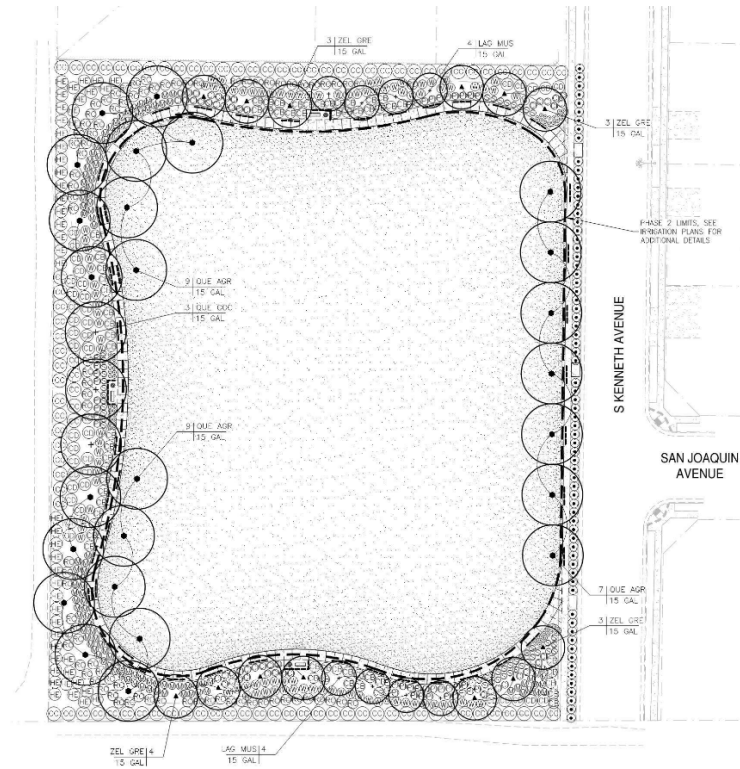


Northwest Park



- Construction began in November
- Concrete path around park has been poured
- Prop 68 signage installed on 12/4/2023





MEDIA RELEASE

DATE: November 6, 2023

CONTACT:

John Jansons, City Manager
City of Kerman - 850 S. Madera Ave.
Kerman, CA 93630 - 559-846-9450
jjansons@cityofkerman.org

FOR IMMEDIATE RELEASE:

**Supporting Communities During Disasters:
CDFA Grants \$38 Million to Improve Resilience Centers Across the State**

KERMAN, CA – The City of Kerman is pleased to announce that the City of Kerman will receive an award from the California Department of Food and Agriculture CDFA Community Resilience Center (CRC) Program for the Kerman Area Multi-Generational Resiliency Center (KAMGRC) grant proposal at a press event on Thursday, November 9 at 10:00 a.m. in Kerman.

Earlier this year the City of Kerman submitted a funding proposal for consideration in the California Department of Food and Agriculture CDFA Community Resilience Centers Program. The funding for the grant program was appropriated as part of the 2021-2022 California general fund budget.

The City of Kerman plans to construct a 15,400 sq. ft. addition to the 11,618 sq. ft. Kerman Community Center to create the 26,400 sq. ft. KAMGRC. The addition would comprise the resiliency features currently lacking in the existing Community Center while capitalizing on the amenities that are currently installed. The Community Center currently has two large-capacity refrigerators, one large-capacity freezer, commercial ovens, and storage space. The proposed project would bring air filtration systems; backup broadband access; backup power sources; backup water sources; device recharging capabilities for cell phones and other personal communications devices; laundry; shelter/places for people to sleep during emergencies; showers; space for food preparation and storage; and other resiliency amenities as well as space for an EOC with meeting areas, classroom/training space, sleeping quarters, food service, and storage areas.

The Center will open on day one as the new KAMGRC serving residents of all ages with new and expanded programming, as well as transitioning the existing, extremely popular Senior Center activities out of the current aging and non-ADA compliant building. Kerman residents will enjoy a new and diverse range of recreational

END

opportunities until now unrealized in the community. The recreation features will promote a blending of senior, youth and family-oriented opportunities; activity rooms will accommodate social gatherings including a recreation room, media room and homework/distance learning room, as well as be available for business incubation and instruction. Kerman will work with the local Chamber of Commerce and Fresno County Economic Development Corporation to provide instruction on business development and job training.

The resilience centers will enhance emergency preparedness capabilities, particularly in response to climate change impacts. Funding will be used to support infrastructure for evacuations, shelters, and base camps during emergency events. The projects and sites that have been selected were also evaluated to consider their potential to provide spaces that the community can use outside of contingency times. The grants will equip facilities and provide spaces that can be used year-round to offer services and activities geared to strengthen local communities through civic, social, educational, and economic development programming. Business incubation centers, satellite college campus facilities, and telemedicine centers are among the viable concepts.

Planning and construction work related to the Community Resilience Centers is expected to begin in early 2024.

For questions or more information, please contact the City of Kerman at (559) 846-9450.

Press Event Location:

Kerman Community Center
15101 W. Kearney Blvd.
Kerman, CA 93630

Additional Staff Contact:

Theresa Johnson
Director of Community
Services 559-846-9328
tjohnson@cityofkerman.org