

KEYNOTES PER SHEET	
1	6" SANITARY SEWER SERVICE, CONTINUED ON CIVIL PLANS. FFE = 100'-0", IE = 96'-3", XXX DPU
2	12" STORM SERVICE, CONTINUED ON CIVIL PLANS. FFE = 100'-0", IE = 93'-3", 1186 GPM
3	8" STORM SERVICE, CONTINUED ON CIVIL PLANS. FFE = 100'-0", IE = 96'-2", 531 GPM
4	8" SANITARY SEWER SERVICE, CONTINUED ON CIVIL PLANS. FFE = 100'-0", IE = 89'-6", XXX DPU
5	4" SANITARY SEWER SERVICE, CONTINUED ON CIVIL PLANS. FFE = 100'-0", IE = 93'-7", XXX DPU
6	8" STORM SERVICE, CONTINUED ON CIVIL PLANS. FFE = 100'-0", IE = 93'-2", 403 GPM
7	12" STORM SERVICE, CONTINUED ON CIVIL PLANS. FFE = 100'-0", IE = 93'-0", 1409 GPM
8	6" SANITARY SEWER SERVICE, CONTINUED ON CIVIL PLANS. FFE = 100'-0", IE = 89'-6", XXX DPU
9	4" GREASE WASTE TO XXX GALLON BUILDING GREASE INTERCEPTOR BELOW GRADE. XXX DPU. FFE = 100'-0", IE = 94'-0"
10	8" COMBINED DOMESTIC WATER & FIRE SERVICE, CONTINUED ON CIVIL PLANS. XXX SFU, XXX GPM
11	12" STORM SERVICE, CONTINUED ON CIVIL PLANS. FFE = 100'-0", IE = 91'-0", 1547 GPM
12	12" STORM SERVICE, CONTINUED ON CIVIL PLANS. FFE = 100'-0", IE = 93'-0", 1642 GPM



PROJECT INFORMATION

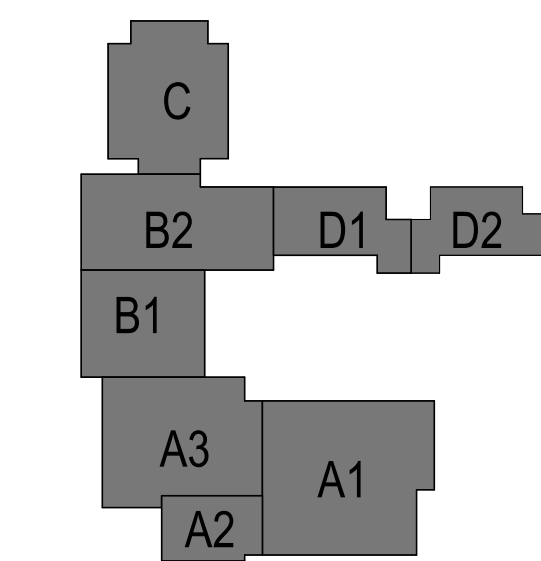
KAUKAUNA NEW  
MIDDLE SCHOOL

KAUKAUNA, WI,  
54130

ISSUANCE AND REVISIONS

DATE	DESCRIPTION
08/13/2025	DESIGN DEVELOPMENT

KEY PLAN



SHEET INFORMATION

**PROGRESS DOCUMENTS  
NOT FOR CONSTRUCTION**  
These documents reflect progress and intent and may be subject to change, including additional detail. These are not final construction documents and shall not be used for final bidding or construction-related purposes.

PROJECT MANAGER RS  
PROJECT NUMBER 323425-01

UNDERGROUND  
PLUMBING PLAN -  
OVERALL

**P100**

© 2025 Epstein Uhen Architects, Inc.