

March 17, 2022

Agenda Item

RW Plat and Relocation Order for Island/Elm Intersection Improvements

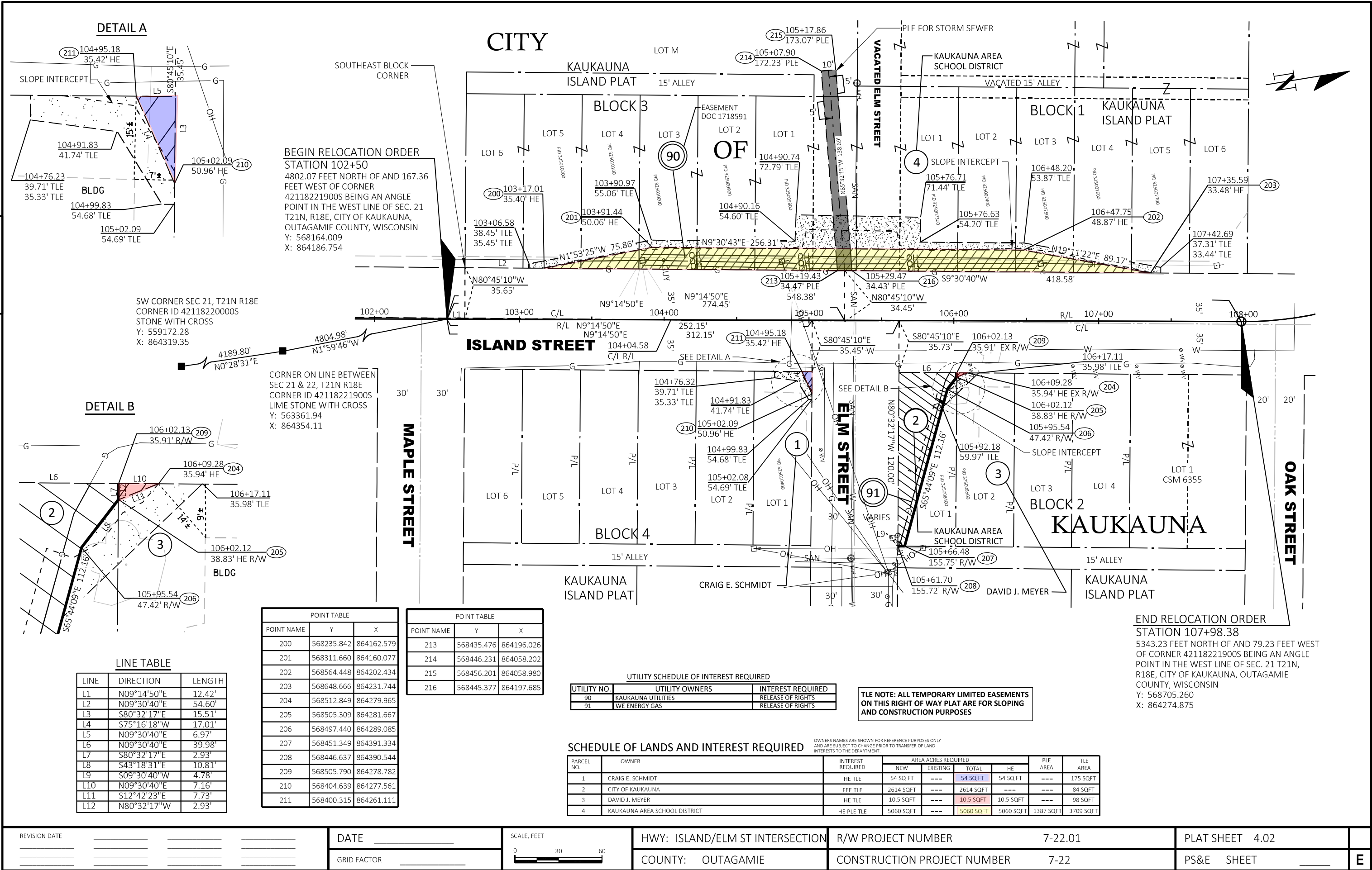
Background

A RW Plat and Relocation Order have been created for Island/Elm Intersection Improvements project and both are attached to this background information. These documents start the acquisition process for the necessary easements to install the improvements.

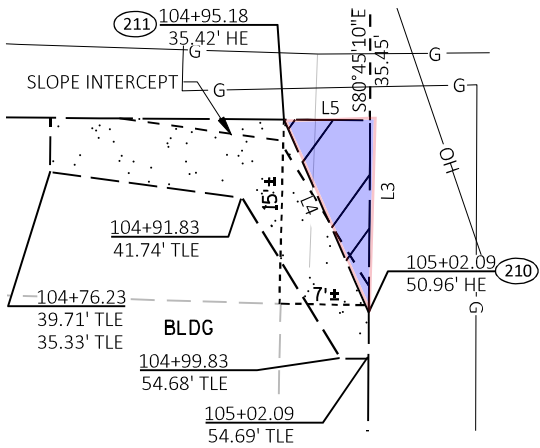
The documents will be recorded in the office of the county Register of Deeds. Provisions are made for the signature(s) of the approving local agency officials. Prior to the recording, the plat must be signed by a representative from the agency authorizing approval of the plat.

Recommended Action

Motion to recommend approval of the RW Plat and Relocation Order for Island/Elm Intersection Improvements to the Common Council and to authorize the Director of Public Works to sign the plat on behalf of City of Kaukauna.



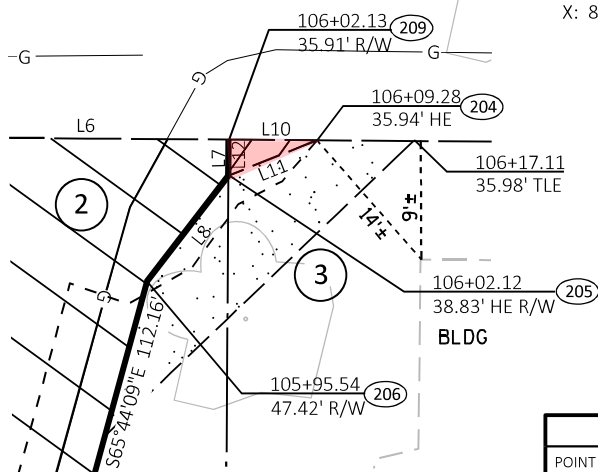
DETAIL A



BEGIN RELOCATION ORDER
STATION 102+50
4802.07 FEET NORTH OF AND 167.36
FEET WEST OF CORNER
42118221900S BEING AN ANGLE
POINT IN THE WEST LINE OF SEC. 21
T21N, R18E, CITY OF KAUKAUNA,
OUTAGAMIE COUNTY, WISCONSIN
Y: 568164.009
X: 864186.754

SW CORNER SEC 21, T21N R18E
CORNER ID 42118220000S
STONE WITH CROSS
Y: 559172.28
X: 864319.35

DETAIL B



LINE TABLE

LINE	DIRECTION	LENGTH
L1	N09°14'50"E	12.42'
L2	N09°30'40"E	54.60'
L3	S80°32'17"E	15.51'
L4	S75°16'18"W	17.01'
L5	N09°30'40"E	6.97'
L6	N09°30'40"E	39.98'
L7	S80°32'17"E	2.93'
L8	S43°18'31"E	10.81'
L9	S09°30'40"W	4.78'
L10	N09°30'40"E	7.16'
L11	S12°42'23"E	7.73'
L12	N80°32'17"W	2.93'

POINT TABLE		
POINT NAME	Y	X
200	568235.842	864162.579
201	568311.660	864160.077
202	568564.448	864202.434
203	568648.666	864231.744
204	568512.849	864279.965
205	568505.309	864281.667
206	568497.440	864289.085
207	568451.349	864391.334
208	568446.637	864390.544
209	568505.790	864278.782
210	568404.639	864277.561
211	568400.315	864261.111

POINT TABLE		
POINT NAME	Y	X
213	568435.476	864196.026
214	568446.231	864058.202
215	568456.201	864058.980
216	568445.377	864197.685

UTILITY SCHEDULE OF INTEREST REQUIRED

UTILITY NO.	UTILITY OWNERS	INTEREST REQUIRED
90	KAUKAUNA UTILITIES	RELEASE OF RIGHTS
91	WE ENERGY GAS	RELEASE OF RIGHTS

TLE NOTE: ALL TEMPORARY LIMITED EASEMENTS
ON THIS RIGHT OF WAY PLAT ARE FOR SLOPING
AND CONSTRUCTION PURPOSES

SCHEDULE OF LANDS AND INTEREST REQUIRED

PARCEL NO.	OWNER	INTEREST REQUIRED	AREA ACRES REQUIRED				PLE AREA	TLE AREA
			NEW	EXISTING	TOTAL	HE		
1	CRAIG E. SCHMIDT	HE TLE	54 SQ.FT	---	54 SQ.FT	54 SQ.FT	---	175 SQFT
2	CITY OF KAUKAUNA	FEE TLE	2614 SQFT	---	2614 SQFT	---	---	84 SQFT
3	DAVID J. MEYER	HE TLE	10.5 SQFT	---	10.5 SQFT	10.5 SQFT	---	98 SQFT
4	KAUKAUNA AREA SCHOOL DISTRICT	HE PLE TLE	5060 SQFT	---	5060 SQFT	5060 SQFT	1387 SQFT	3709 SQFT

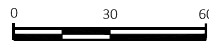
OWNERS NAMES ARE SHOWN FOR REFERENCE PURPOSES ONLY
AND ARE SUBJECT TO CHANGE PRIOR TO TRANSFER OF LAND
INTERESTS TO THE DEPARTMENT.

REVISION DATE				

DATE

GRID FACTOR

SCALE, FEET



HWY: ISLAND/ELM ST INTERSECTION

COUNTY: OUTAGAMIE

R/W PROJECT NUMBER 7-22.01

CONSTRUCTION PROJECT NUMBER 7-22

PLAT SHEET 4.02

PS&E SHEET

E

RELOCATION ORDER

LPA1708 08/2011 (Replaces LPA3006)

Project 7-22.01 Island/ Elm Intersection Improvements	Road name Island Street City of Kaukauna, Outagamie County, Wisconsin	Highway Island Street	County Outagamie
Right of way plat date ##-##-2022	Plat sheet number(s) 4.02	Previously approved Relocation Order date None	

Description of termini of project: Beginning at a point that is 4802.07 feet North of and 167.63 feet East of Outagamie County Corner 42118221900S being an angle point in the West line of Sections 21, T21N, R18E, City of Kaukauna, Outagamie County Wisconsin; thence Northeasterly to the End of Relocation Order point. Said point being 5343.23 feet north of and 79.23 feet East of Outagamie County Corner 42118221900S being an angle point in the West line of Section 21, T21N, R18E, City of Kaukauna, Outagamie County, Wisconsin, as shown on the plat of right-of-way or a copy thereof marked.

Total net length of centerline is approximately 548.38 feet (0.104 miles).

Outagamie County Coordinate System, NAD 83 (2012):

Beginning Coordinates

Y: 568,164.009

X: 864,186.754

End Coordinates:

Y: 568705.260

X: 864274.875

To properly establish, lay out, widen, enlarge, extend, construct, reconstruct, improve, or maintain a portion of the highway designated above, it is necessary to relocate or change and acquire certain lands or interests in lands as shown on the right of way plat for the above project.

To effect this change, pursuant to authority granted under Sections 62.22 and 62.23(10), Wisconsin Statutes, the City of Kaukauna orders that:

1. The said road is laid out and established to the lines and widths as shown on the plat.
2. The required lands or interests in lands as shown on the plat shall be acquired by: City of Kaukauna
3. This order supersedes and amends any previous order issued by the: City of Kaukauna

Name and Title

Date