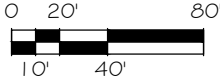


UPDATED - 7-19-23

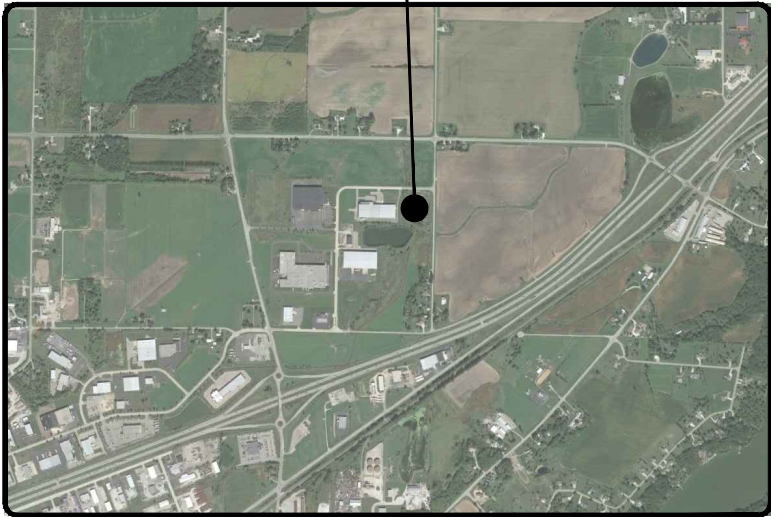


SITE PLAN

SCALE: 1" = 40'-0"



PROJECT LOCATION



SITE MAP

N.T.S.



PRELIMINARY
NOT FOR CONSTRUCTION

SITE PLAN NOTES

OVERALL SITE - 185,478 S.F. - 4.258 ACRES

BUILDING AREA = 2,400 S.F.

CITY OF KAUKAUNA ZONING:
IND - INDUSTRIAL DISTRICT

BUILDING SETBACKS:
FRONT YARD: 25'
CORNER/SIDE: 15'
IF BUILDING EXCEEDS 35' SIDE OFFSET INCREASES 1' FOR EVERY 3' OVER 35'
REAR: 30'

PARKING REQUIREMENTS
OFFICE: 1 SPACE FOR EVERY 300 S.F. OF GROSS FLOOR AREA
MANUFACTURING/ WAREHOUSE, 1 SPACE FOR EVERY EMPLOYEE OF THE LARGEST SHIFT PLUS 3 VISITOR PARKING STALLS PLUS ON STALL FOR EACH COMPANY VEHICLE.

9' X 18' STALLS
24' WIDE TWO WAY DRIVES
12' ONE WAY DRIVES

PLANT/PRODUCTION- 2,400 S.F.

PARKING STALLS FOR PLANT (MIN X) - PROVIDED= 10

OFFICE - X S.F.

PARKING STALLS FOR OFFICE (MIN X) - PROVIDED= 10

TOTAL BUILDING - 2,400 S.F.

© 2023
This print is the
sole property of
RMA Architects, Inc.
Any reproduction,
copying, or use is
strictly prohibited
without written
permission.

RMA
ARCHITECTS
1050 SOUTH GRIDER STREET
APPLETON, WISCONSIN 54914
PHONE: 920-364-9850

PROPOSED BUILDING FOR:
NEW BUILDING FOR RANDY GRIESBACH
CORNER OF OAK GROVE RD AND FARRELL RD
KAUKAUNA, WISCONSIN

REVISIONS
7-19-23

DRAWN BY
KAF
CHECKED BY
TFM

DATE
5/25/23

PROJECT NO.
235019

SP1.2