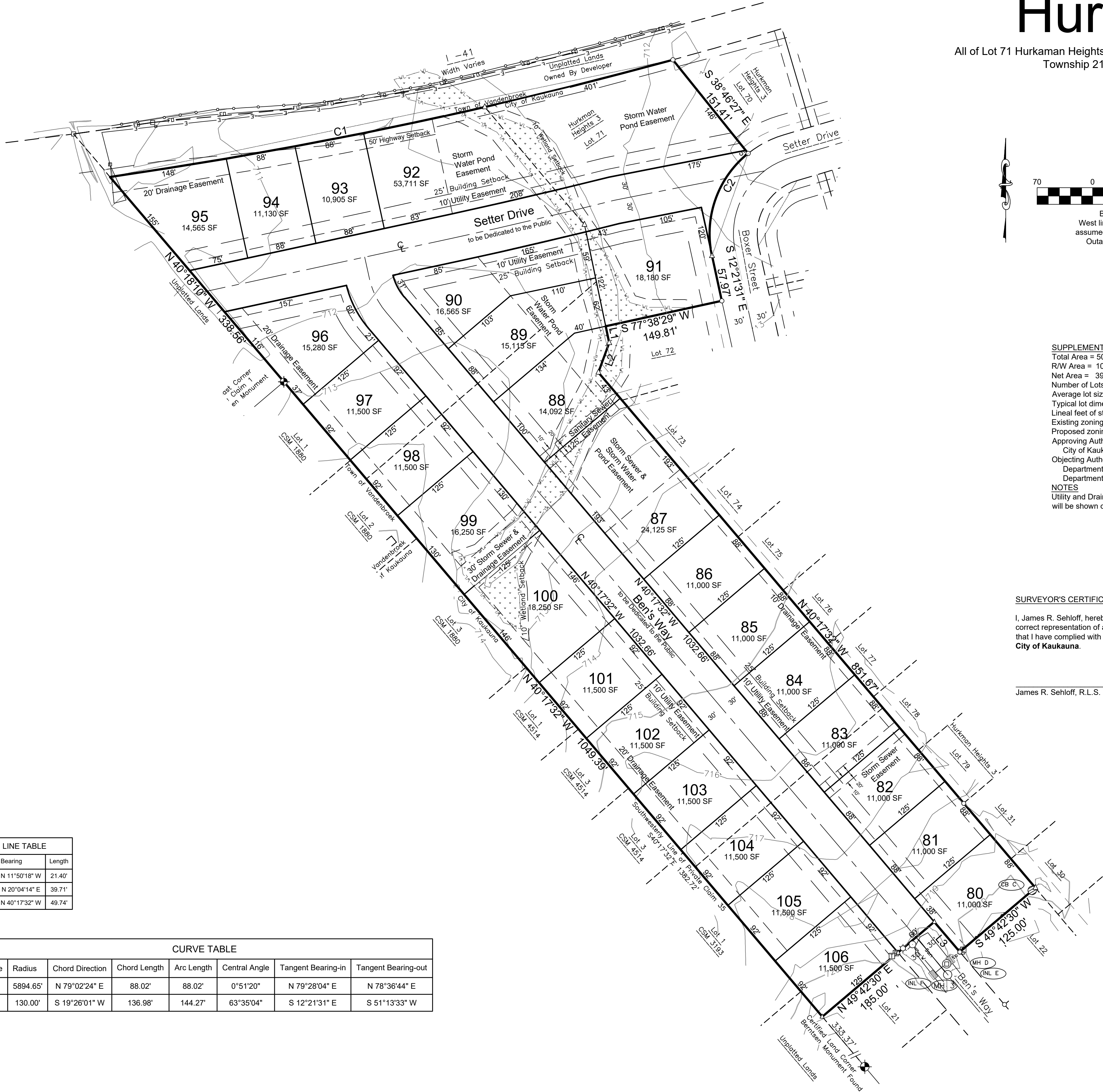


Preliminary Plat of

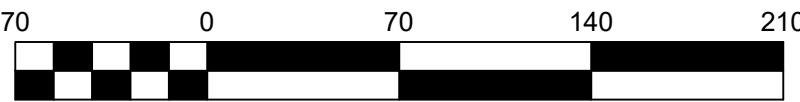
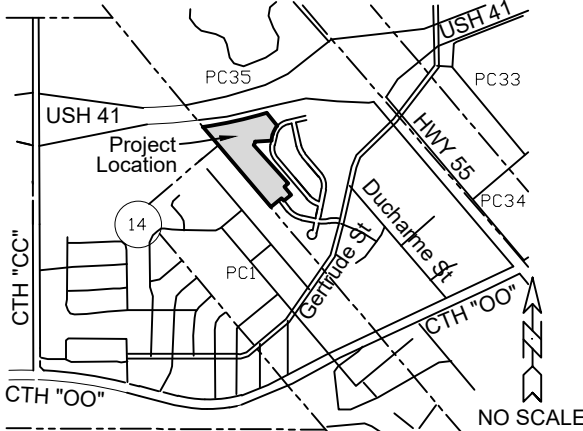
Hurkman Heights 4

All of Lot 71 Hurkman Heights 3 and part of Lots 12 & 18 and all of Lot 16, In the Subdivision of Private Claim 35 in 1858, Township 21 North, Range 18 East, City of Kaukauna, Outagamie County, Wisconsin



LOCATION MAP

PART OF PC35, T 21 N, R 18 E,
CITY OF KAUKAUNA
OUTAGAMIE COUNTY, WI



Bearings are referenced to the West line of Private Claim 35, T21N, R18E assumed to bear N40°17'32\"W based on the Outagamie County coordinate system.

SUPPLEMENTARY DATA

Total Area = 502,523 SF 11.5363 acres
R/W Area = 105,354 SF 2.4186 acres
Net Area = 397,169 SF 9.1177 acres
Number of Lots = 27
Average lot size = 11,250 SF
Typical lot dimension = 90'x 125'
Lineal feet of street = 1,844 LF
Existing zoning = RSF
Proposed zoning = RSF
Approving Authorities
City of Kaukauna
Objecting Authorities
Department of Administration
Department of Transportation
NOTES
Utility and Drainage Easements will be shown on Final Plat

Storm Structures

Structure	#	Rim	Inv	Size	Material	Direction
MH	A	724.31	719.40	8"	PVC	SE
MH	B	719.97	715.32	10"	PVC	SE
CB	C	719.14	715.50	12"	PVC	SW
MH	D	718.75	714.21	12"	PVC	SE
INL	E	718.45	715.00	12"	PVC	SW
INL	F	718.44	715.00	12"	PVC	NE

Sanitary Structures

Structure	#	Rim	Inv	Size	Material	Direction
MH	1	723.73	716.10	8"	PVC	SE
MH	2	720.01	711.55	8"	PVC	SE
MH	3	719.04	708.75	8"	PVC	SE
			708.64	8"	PVC	NW

BENCHMARKS (NAVD 88 Datum)

BM 0	NGS Benchmark PID PN0153 Elev	712.26
BM 1	Fire Hydrant, Tag Bolt Lots 17/18 S R/W Ben's Way Elev	722.56
BM 2	Fire Hydrant, Tag Bolt West End of Ben's Way (NW Corner Lot 21) Elev	720.53
BM 3	Fire Hydrant, Tag Bolt North End of Rusty Street (NE Corner Lot 26) Elev	723.06
BM 4	Fire Hydrant, Tag Bolt Boxer Street (Lot 74/ Lot 75) Elev	718.84
BM 5	Fire Hydrant, Tag Bolt Boxer Street, ±65 South of Lot 71 Elev	717.92
BM 6	Fire Hydrant, Tag Bolt Setter Drive(NW Corner Lot 52) Elev	718.39

SURVEYOR'S CERTIFICATE

I, James R. Sehloff, hereby certify that this Preliminary Plat is a correct representation of all existing land divisions and features, and that I have complied with the preliminary plat requirements for the City of Kaukauna.

James R. Sehloff, R.L.S. No. S-2692 Date

LEGEND

—CATV—	CATV	Underground Cable TV	Sanitary MH / Tank / Base	□	CATV Pedestal
—FD—	FD	Underground Fiber Optic	Clean Out / Curb Stop / Pull Box	□	Gas Regulator
—San—	San	Sanitary Sewer	Storm Manhole	Δ	1 1/2" Rebar Found
—Sto—	Sto	Storm Sewer	Inlet	□	3/4" Rebar Found
—E—	E	Underground Electric	Catch Basin / Yard Drain	□	1" Iron Pipe Found
—G—	G	Underground Gas Line	Water MH / Well	□	Government Corner
—T—	T	Underground Telephone	Hydrant	□	Benchmark
—W—	W	Water Main		□	
—800—		Index Contour		□	
—799—		Intermediate Contour		□	

File: 4562Plat Ph4.dwg
Date: 03/08/2023
Drafted By: Jim
Sheet: 1 of 1



DAVEL ENGINEERING & ENVIRONMENTAL, INC.
CIVIL ENGINEERING CONSULTANTS

1811 Racine Street, Menasha, WI 54952
Ph: 920-991-1866 Fax: 920-830-9595
www.davel.pro