



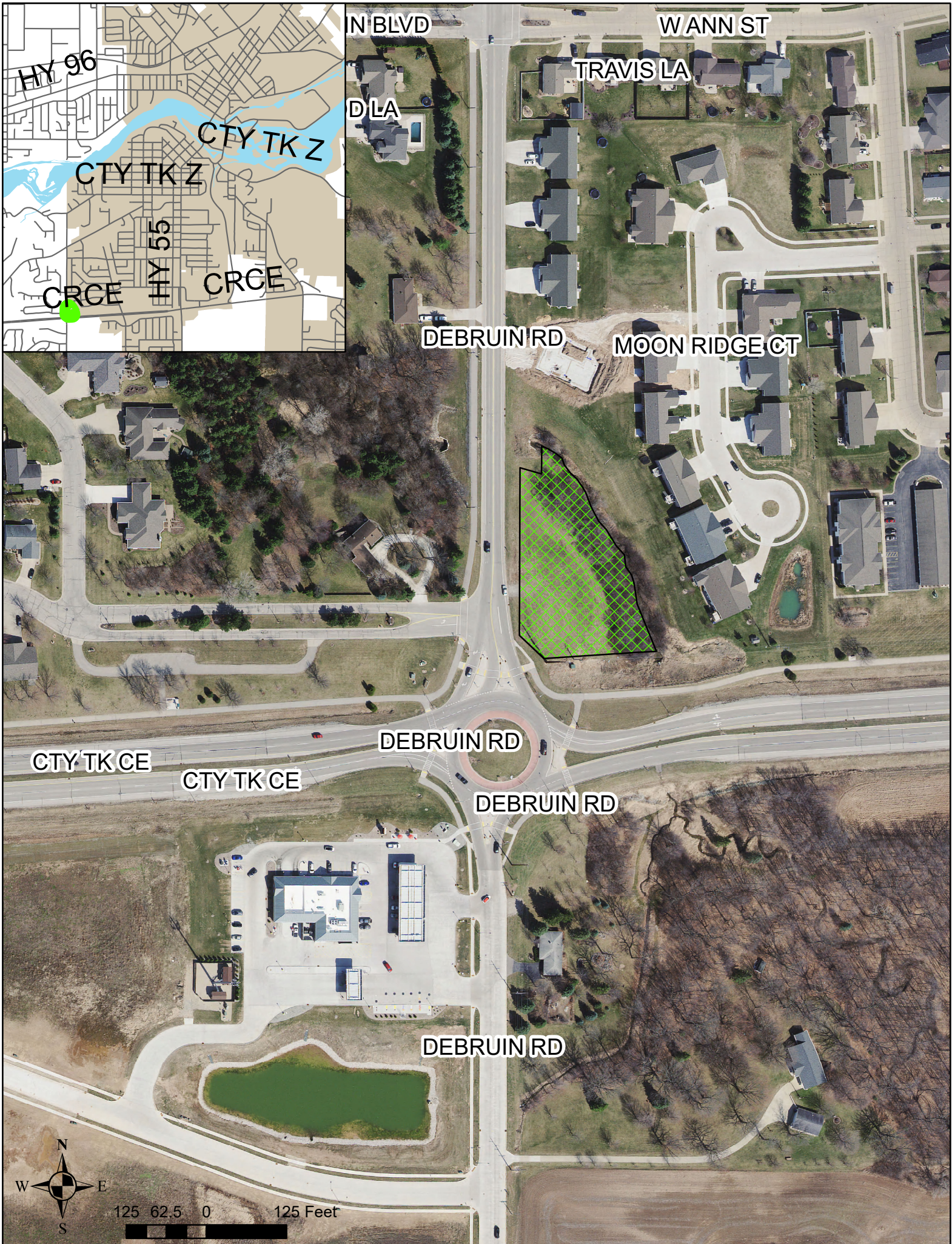
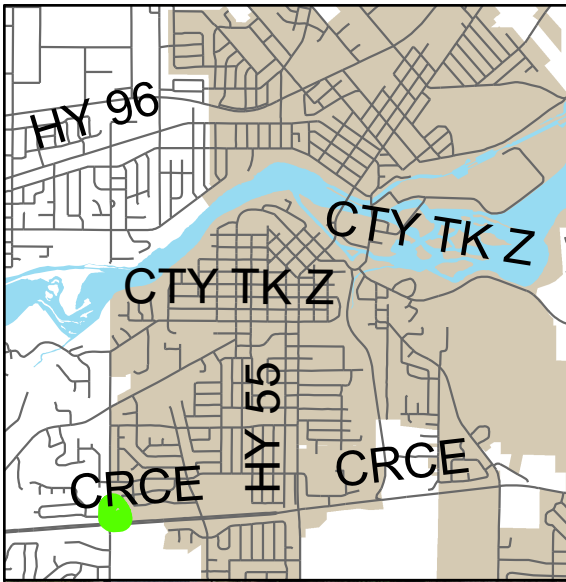
MEMO

PLANNING AND COMMUNITY DEVELOPMENT

To: Plan Commission
From: Lily Paul, Associate Planner
Date: February 16, 2023
Re: Discussion – Best use for Parcel 030067904; Corner of CTH CE & HH

Parcel 030067904, which is located on the North East corner of intersection CTH CE and CTH HH, has been presented to plan commission to possibly be annexed into the City of Kaukauna. Unfortunately, the use that was proposed for this property is not a great fit for the location due to extensive work to bring water and sewer to the area. To avoid bringing utilities to the parcel, it would be wise to find an alternative use for this property. With Garner's Creek infringing on the property, converting it to a natural area and making it public use seems to make the most sense. It could be converted to a parklet with great access off of the CE Trail and include pedestrian oriented amenities. Or it could be strategically planted to become a beautiful natural area and feature a Welcome to Kaukauna sign.





125 62.5 0 125 Feet

A scale bar indicating distances in feet, with markings for 125, 62.5, and 0 feet.