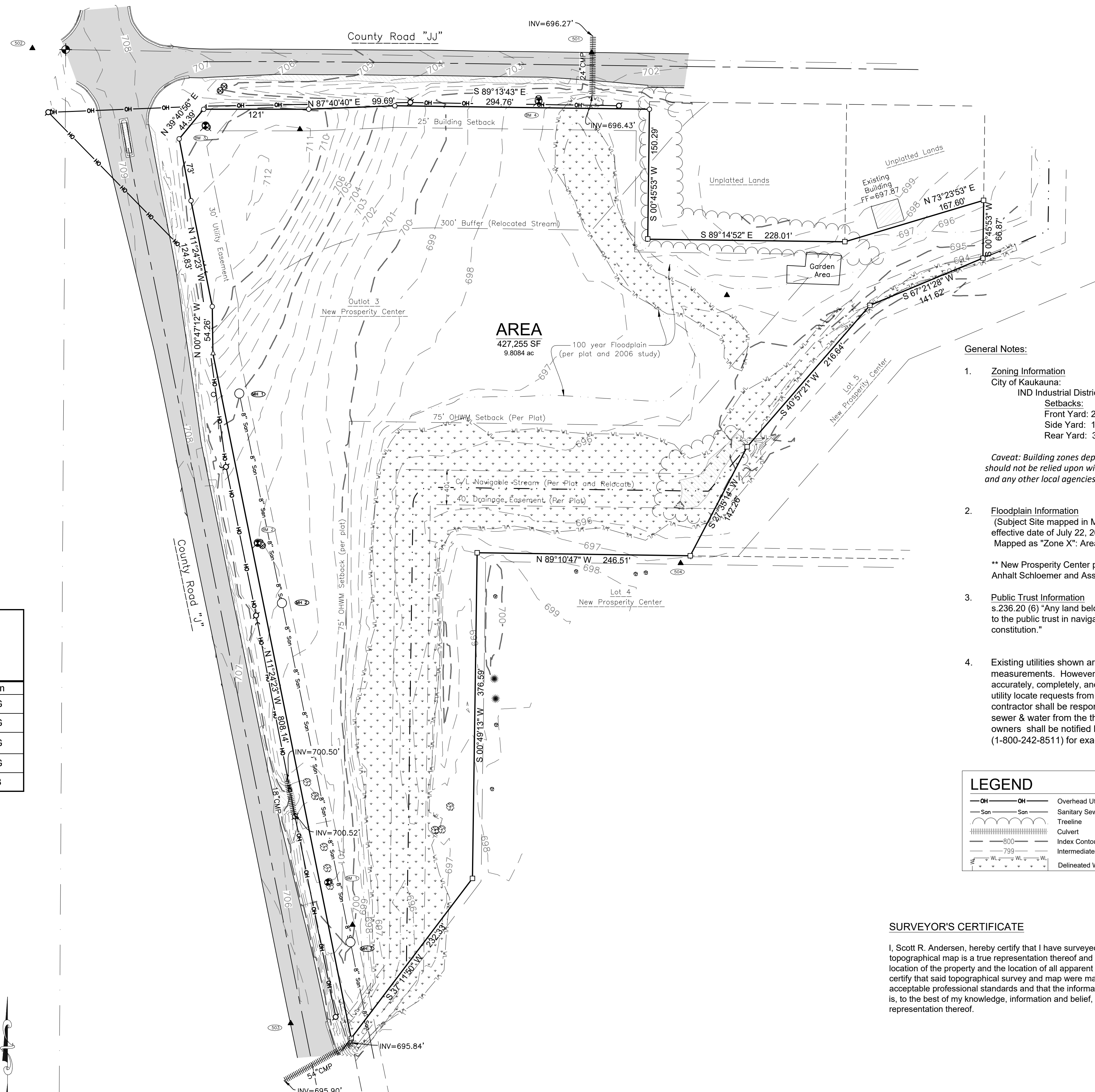


Sanitary Structures						
Structure #	Rim	Inv	Size	Material	Direction	
MH 1	705.05	686.86	8"	PVC	SE	
MH 2	702.75	685.80	8"	PVC	NW	
		685.80	8"	PVC	SE	
MH 3	700.29	684.11	8"	PVC	NW	
		684.11	8"	PVC	SE	

BENCHMARKS (Datum NAVD88)

BM 0	NGS Benchmark PID - PN0644, Designation - TT 13 MF Elev 695.39'
BM 1	Fire Hydrant, Tag Bolt ±55' NE of CTH "J" Centerline Elev 703.03'
BM 2	Fire Hydrant, Tag Bolt ±55' NE of CTH "J" Centerline, ±400' NW of BM 1 Elev 705.77'
BM 3	Fire Hydrant, Tag Bolt ±130' SE of CTH "J" & CTH "JJ" Intersection Elev 710.86'
BM 4	Fire Hydrant, Tag Bolt ±55' S of CTH "JJ" Centerline, ±400' E of BM 3 Elev 699.95'

Horizontal Control			
PN8385 - (City of Kaukauna)			
2024-06-17			
Davel Engineering and Environmental			
Horizontal Control (per Outagamie County Coordinate System)			
Point Number	Northing	Easting	Description
500	581905.93	868911.41	CPT MAG
501	581912.87	868408.71	CPT MAG
502	581918.07	867761.70	CPT MAG
503	580790.26	868060.49	CPT MAG
504	581322.40	868511.60	CPT HUB



General Notes:

- Zoning Information**
City of Kaukauna:
IND Industrial District
Setbacks:
Front Yard: 25 Feet
Side Yard: 15 Feet
Rear Yard: 30 Feet

Caveat: Building zones depicted are based on building setbacks in effect at the time of the survey and should not be relied upon without first obtaining written verification thereof from the City of Kaukauna and any other local agencies.
- Floodplain Information**
(Subject Site mapped in Multiple Zones per FIRM Map No. 55087C0334 & 55087C0353D with an effective date of July 22, 2010
Mapped as "Zone X": Area determined to be outside the 0.2% annual chance floodplain.

** New Prosperity Center plat has a 100 year Floodplain line mapped per Study done by Graef Anhalt Schloemer and Associates Inc in 2006.
- Public Trust Information**
s.236.20 (6) "Any land below the ordinary high water mark of a lake or a navigable stream is subject to the public trust in navigable waters that is established under article IX, section 1, of the state constitution."
- Existing utilities shown are indicated in accordance with available records and field measurements. However, lacking excavation, the exact location of underground features cannot be accurately, completely, and reliably depicted. In addition, in some jurisdictions, 811 or other similar utility locate requests from surveyors may be ignored or result in an incomplete response. The contractor shall be responsible for obtaining exact locations & elevations of all utilities, including sewer & water from the the property owners of the respective utilities. All utility the property owners shall be notified by the contractor 72 hours prior to excavation. Contact Digger's Hotline (1-800-242-8511) for exact utility locations.

LEGEND			
	Overhead Utility Lines		Sanitary MH / Tank / Base
	Sanitary Sewer (Pipe Size)		Hydrant
	Treeline		Utility Valve
	Culvert		Utility Pole
	Index Contour - Existing		Guy Wire
	Intermediate Contour - Existing		Post / Guard Post
	Delineated Wetlands - Davel 2024		Deciduous Tree
			Coniferous Tree
			Benchmark
			Asphalt Pavement
			Concrete Pavement
			Gravel

SURVEYOR'S CERTIFICATE

I, Scott R. Andersen, hereby certify that I have surveyed this property and this topographical map is a true representation thereof and shows the size and location of the property and the location of all apparent roadways. I hereby certify that said topographical survey and map were made in accordance with acceptable professional standards and that the information contained thereon is, to the best of my knowledge, information and belief, a true and accurate representation thereof.

Scott R. Andersen, Wisconsin Professional Land Surveyor No. S-3169 Date _____

Jul 02, 2024 - 08:09 PM J:\Projects\8385\8385Surface.dwg Civil 3D\8385Surface.dwg Printed by: scott

DAVEL ENGINEERING & ENVIRONMENTAL, INC.
Civil Engineers and Land Surveyors
1184 Province Terrace, Menasha, WI, 54952
Ph: 920-991-1866 Fax: 920-441-0804
www.davel.pro

TOPOGRAPHIC SURVEY

101 E County Road JJ
City of Kaukauna, Outagamie County, WI
For: Fox Valley Storage

Date:	07/2/2024
Filename:	8385Surface.dwg
Author:	SRA
Last Saved by:	scott
Page	C1.1